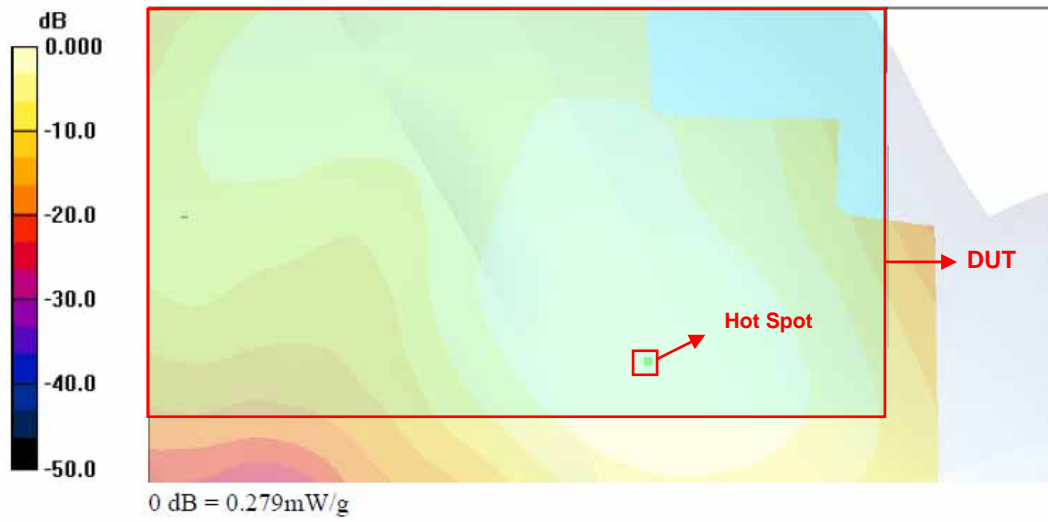


Peak Locations Spacing for Head

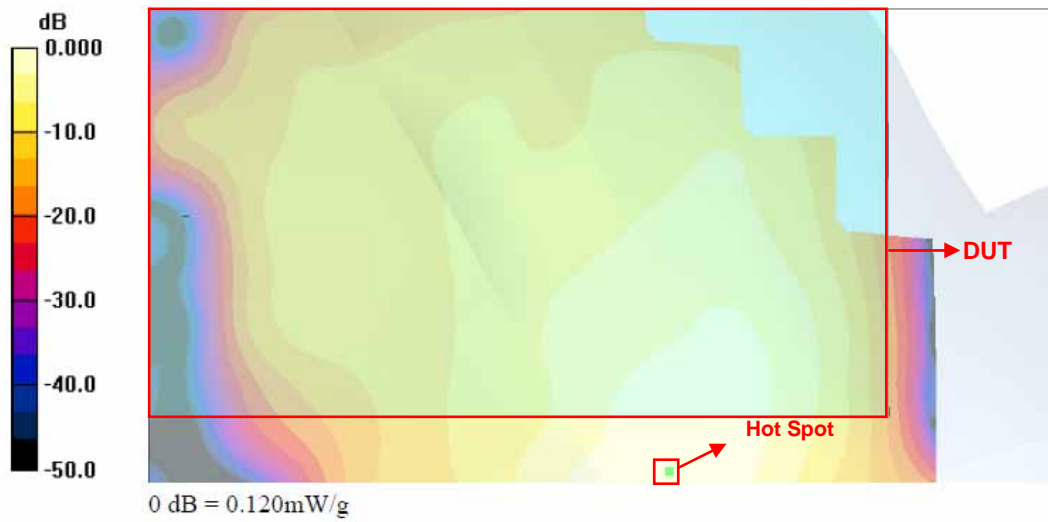
<Plot 1>

Left Cheek_GSM1900 Ch512_Battery1

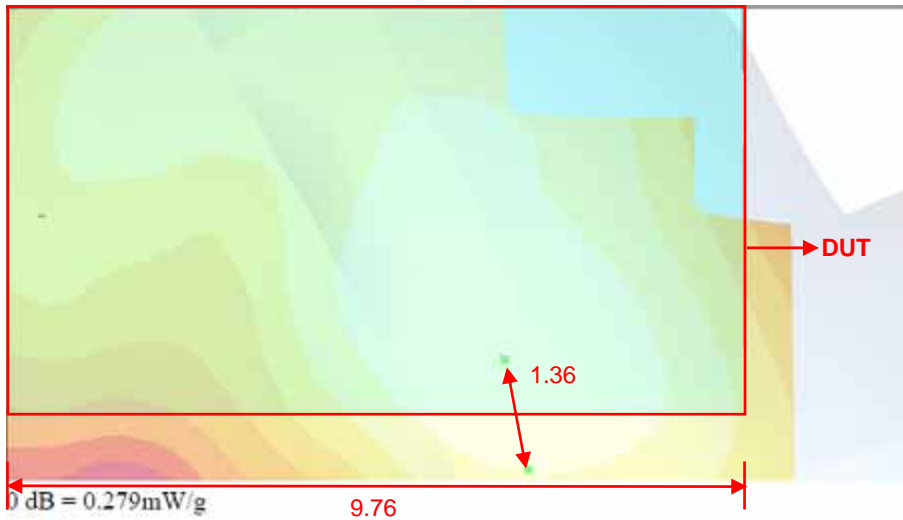


<Plot 2>

Left Cheek_802.11b Ch1_Battery1



<Plot 1 + Plot 2>



The actual length of DUT is 11.36 cm.

Set X is separation distance between these two hot spots

$$X / 11.36 = 1.36 / 9.76$$

$$X = 1.36 / 9.76 * 11.36 = \mathbf{1.58 \text{ cm}}$$