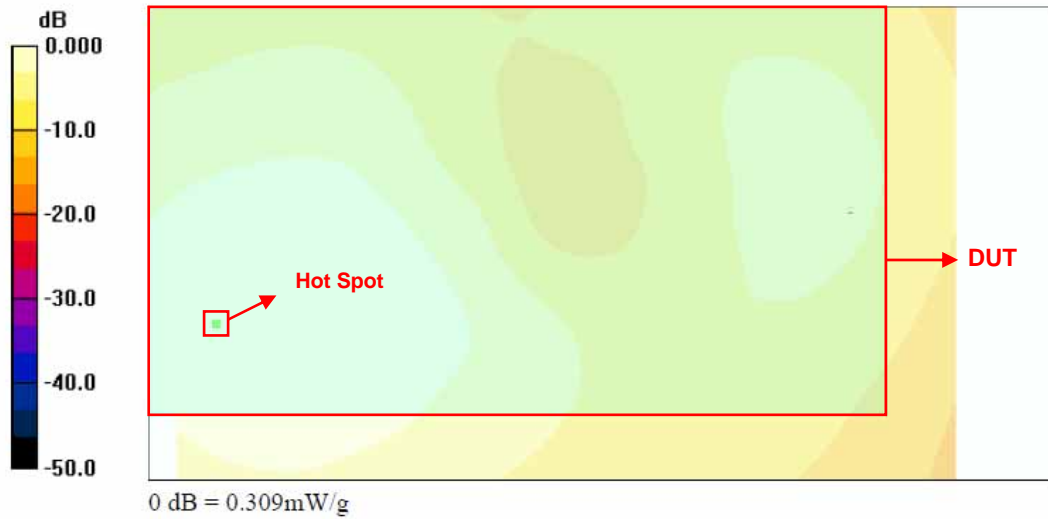


Peak Locations Spacing for Body

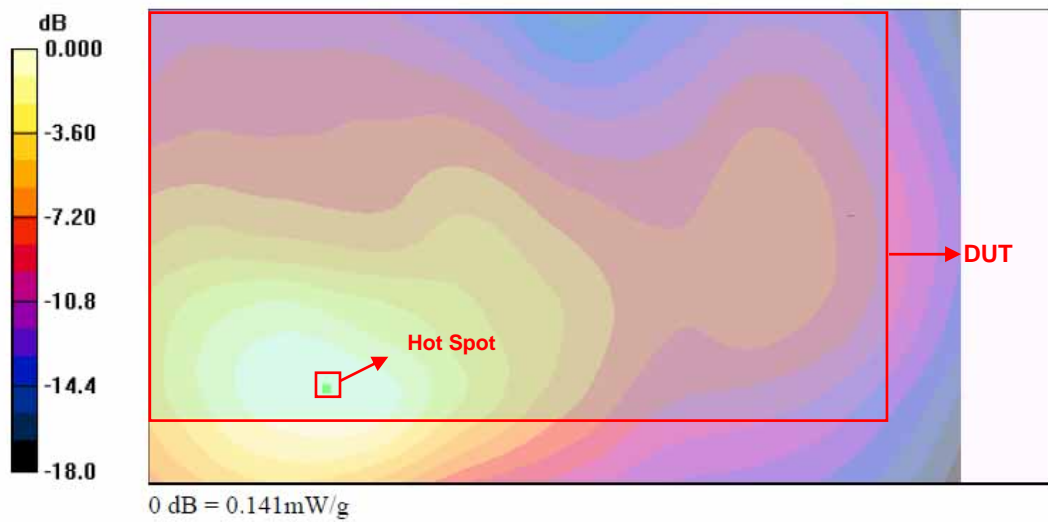
<Plot 1>

Body_GSM1900 Ch661_Bottom with 1.5cm Gap_GPRS10

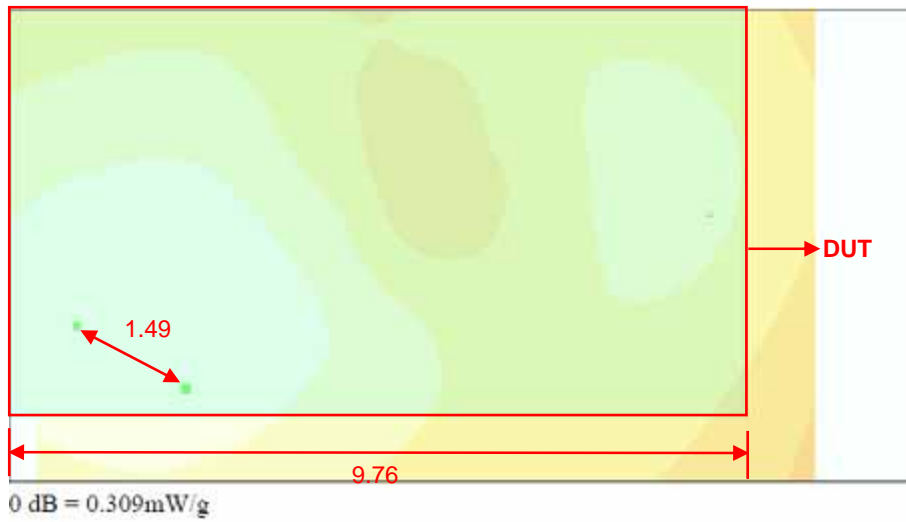


<Plot 2>

Body_802.11b Ch1_Bottom with 1.5cm Gap



<Plot 1 + Plot 2>



The actual length of DUT is 11.36 cm.

Set X is separation distance between these two hot spots

$$X / 11.36 = 1.49 / 9.76$$

$$X = 1.49 / 9.76 * 11.36 = \mathbf{1.73 \text{ cm}}$$