

SAR Test Setup Photographs

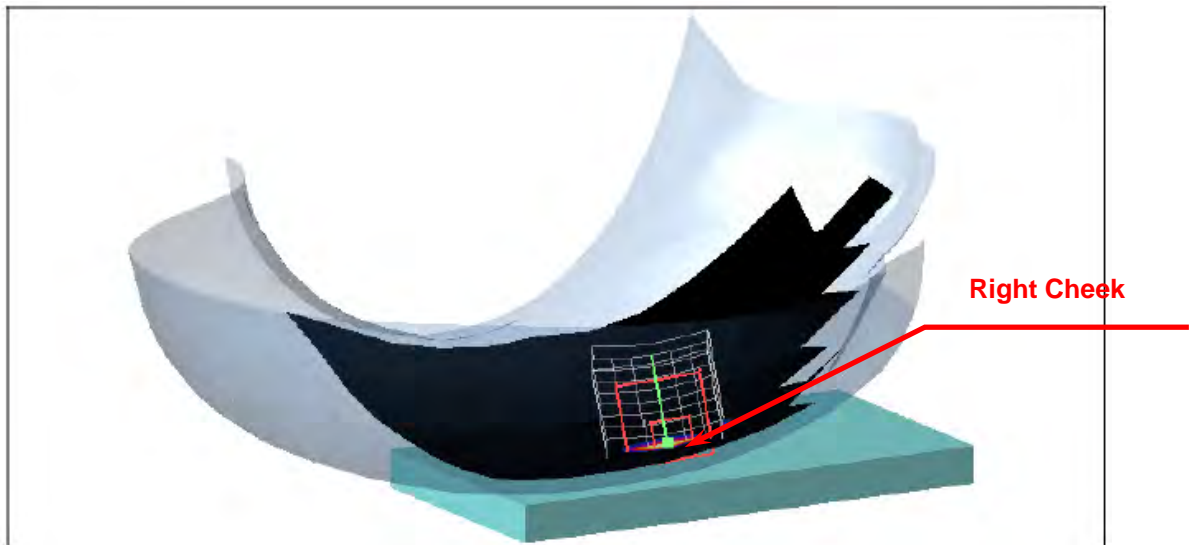
Right Head Setup



Figure 1. Right Head SAR Test Setup (Cheek)



Figure 2. Right Head SAR Test Setup (Tilted)



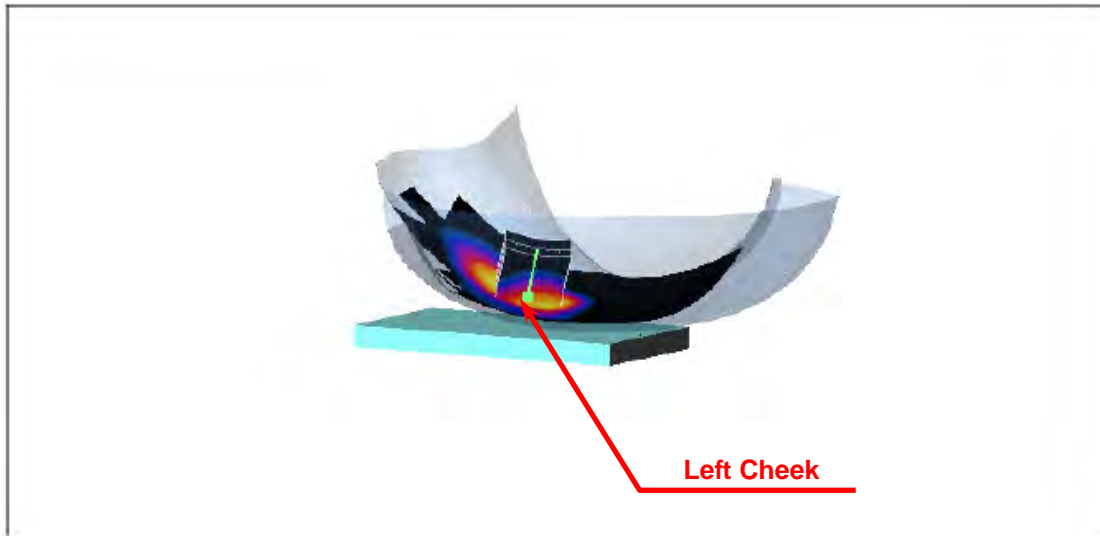
Left Head Setup



Figure 3. Left Head SAR Test Setup (Cheek)



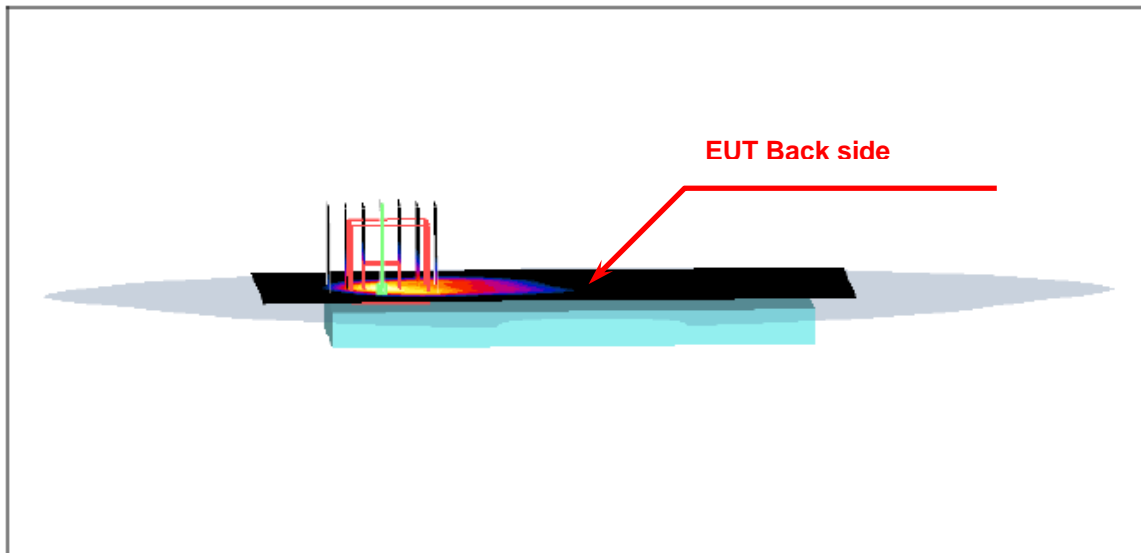
Figure 4. Left Head SAR Test Setup (Tilted)



Body Setup (Back Surface _ 10 mm separations to phantom)



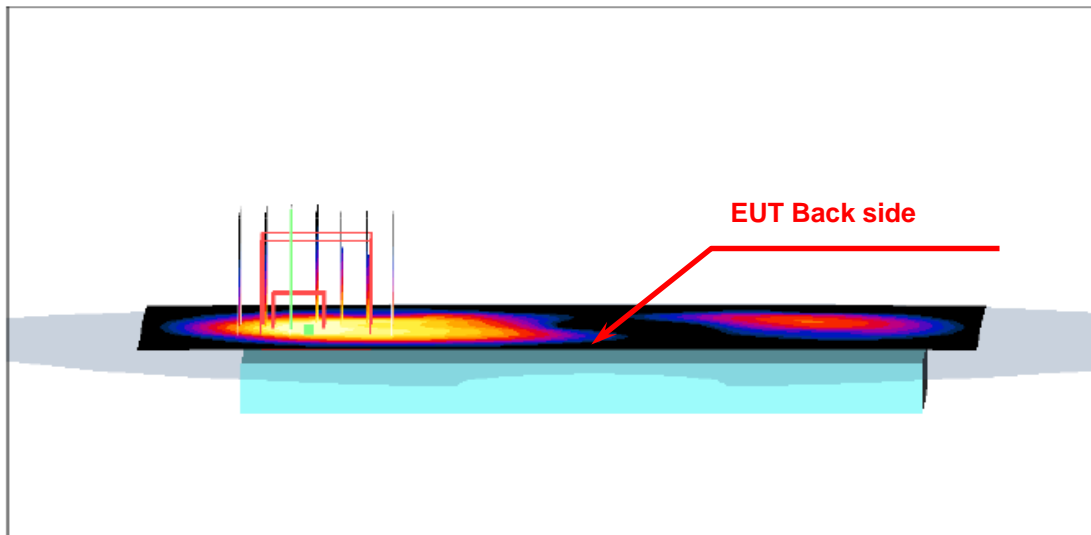
Figure 5. Body SAR Test Setup (Flat Section)



Body Setup (Back Surface with Headset _ 10 mm separations to phantom)



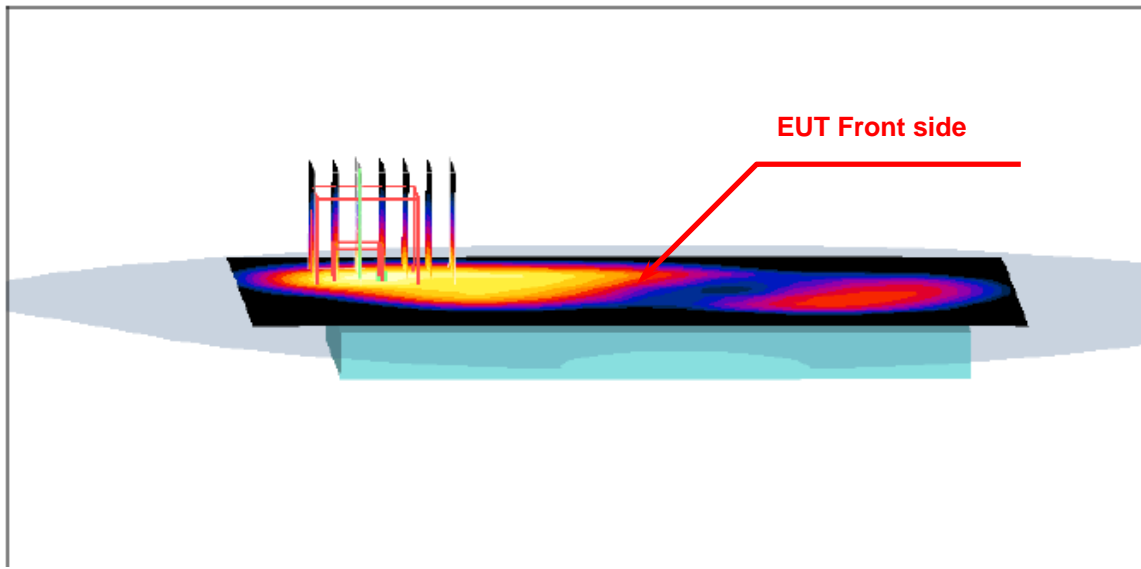
Figure 6. Body SAR Test Setup (Flat Section)



Body Setup (Front Surface _ 10 mm separations to phantom)



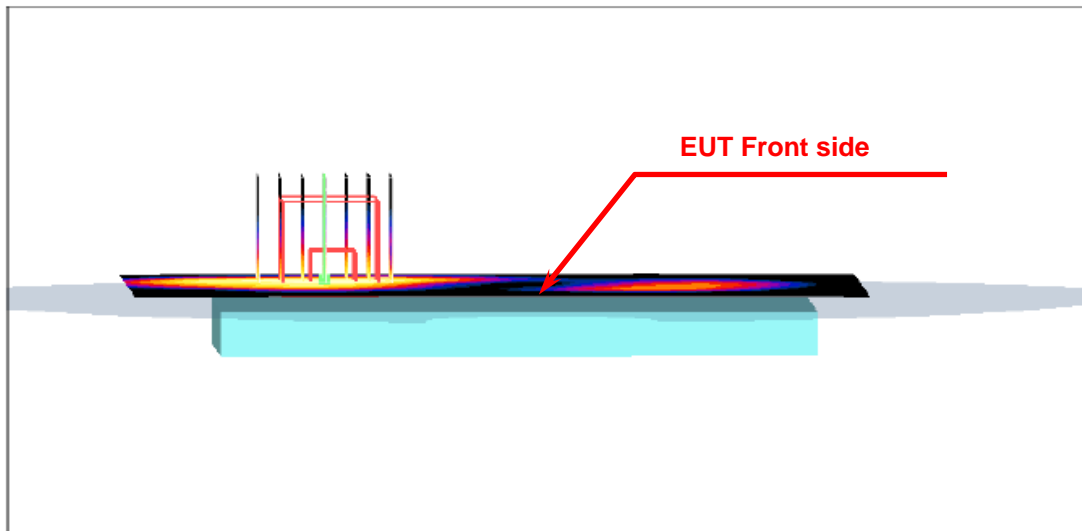
Figure 7. Body SAR Test Setup (Flat Section)



Body Setup (Front Surface with Headset _ 10 mm separations to phantom)



Figure 8. Body SAR Test Setup (Flat Section)



Body Setup (Edge Bottom _ 10 mm separations to phantom)

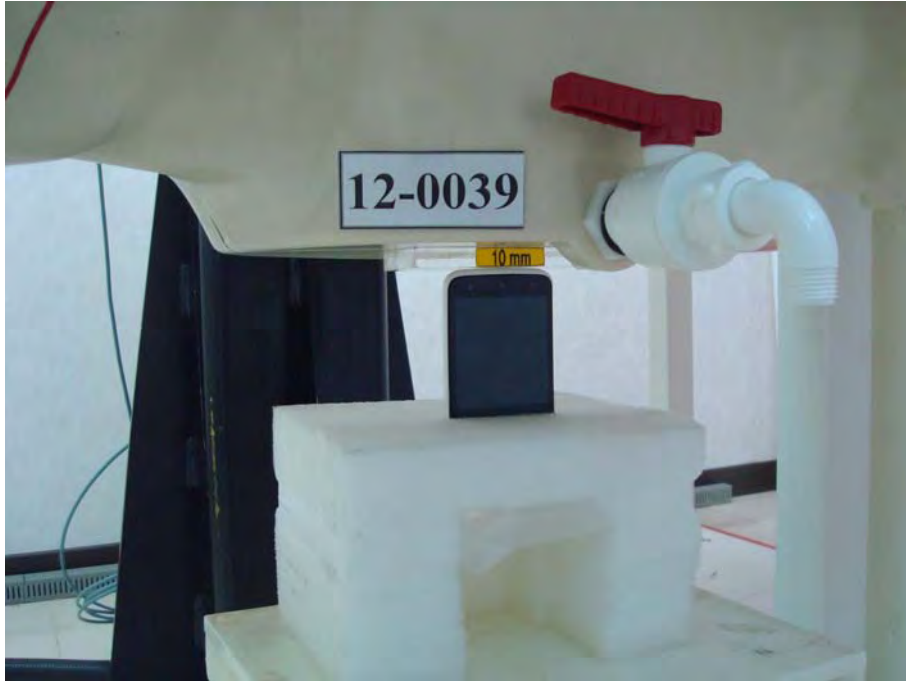
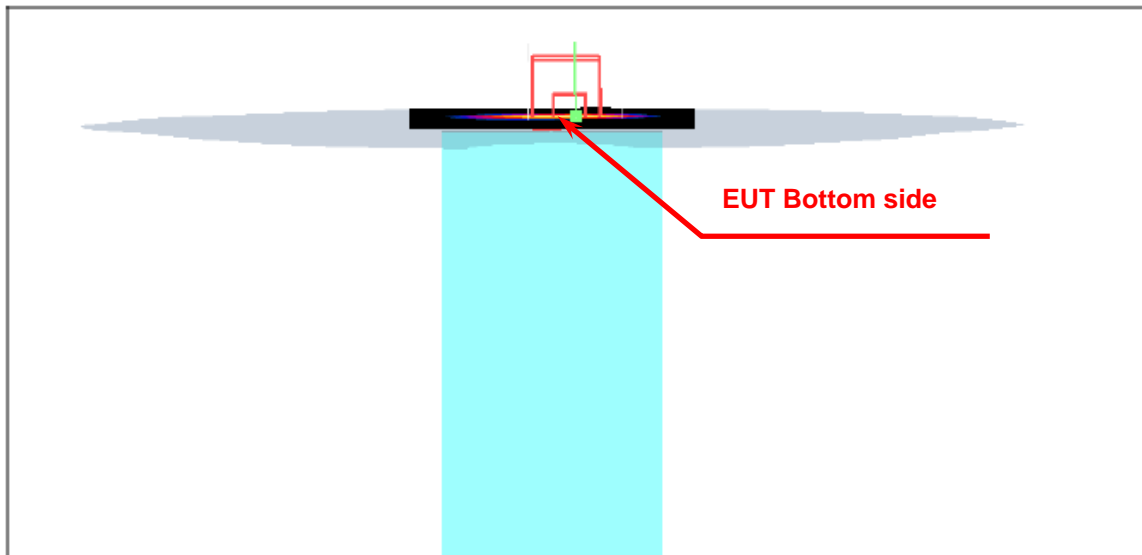


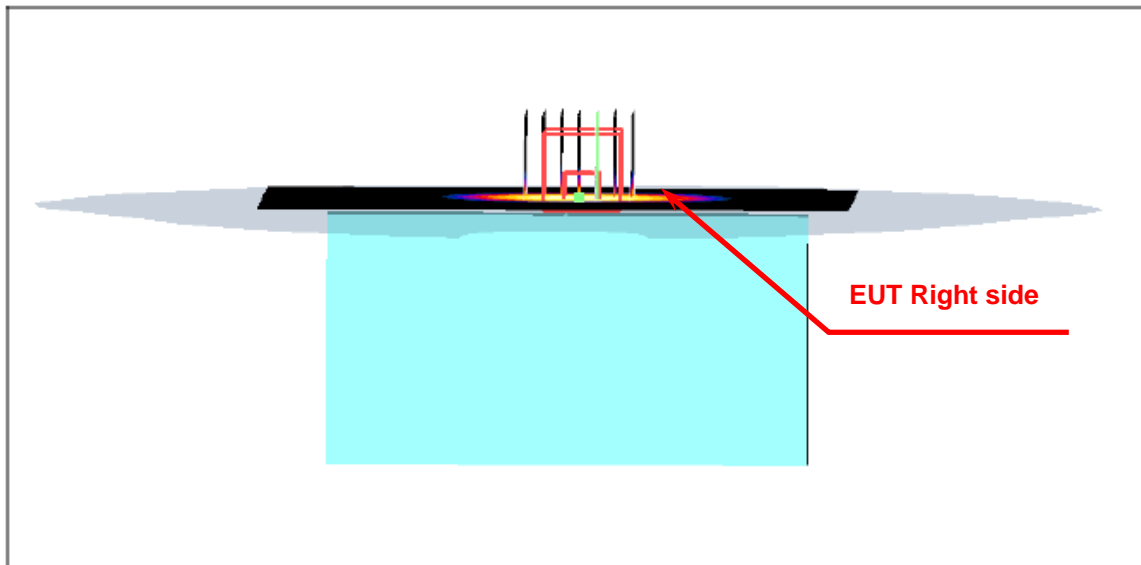
Figure 9. Body SAR Test Setup (Flat Section)



Body Setup (Edge Right _ 10 mm separations to phantom)



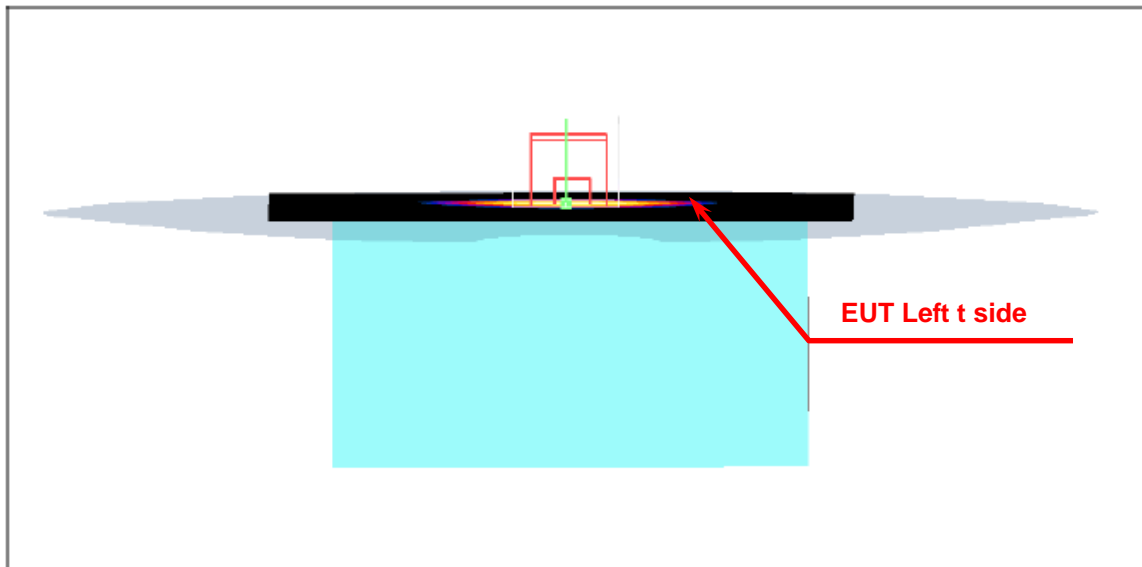
Figure 10. Body SAR Test Setup (Flat Section)



Body Setup (Edge Left _ 10 mm separations to phantom)



Figure 11. Body SAR Test Setup (Flat Section)



Body Setup (Edge Top _ 10 mm separations to phantom)



Figure 12. Body SAR Test Setup (Flat Section)

