

## SAR Test Setup Photographs

### Right Head Setup

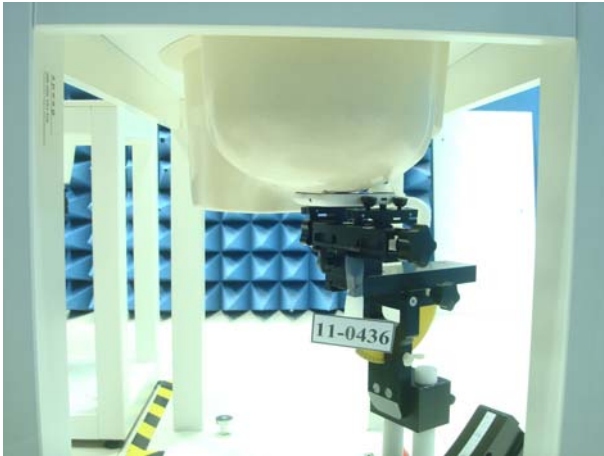


Figure 1. Right Head SAR Test Setup (Cheek)

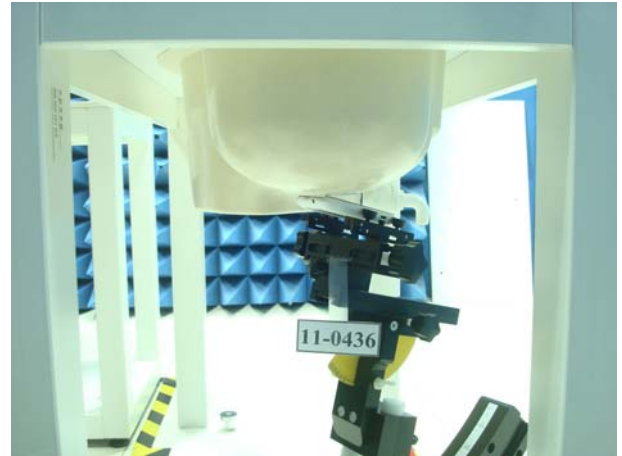
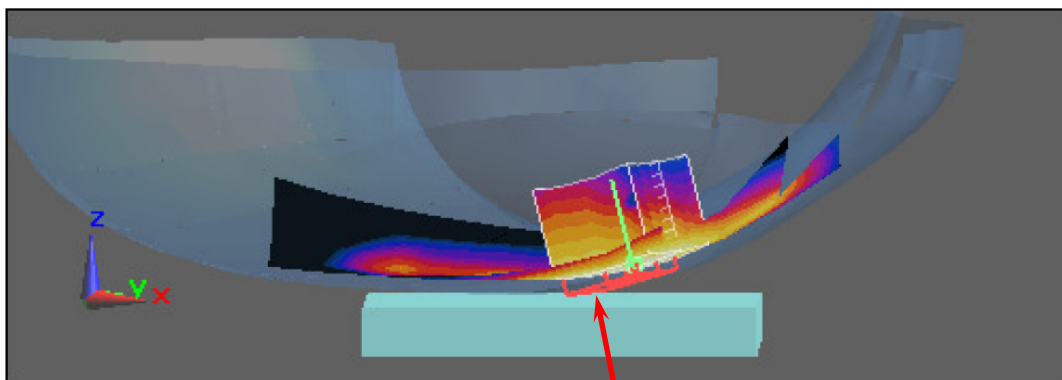
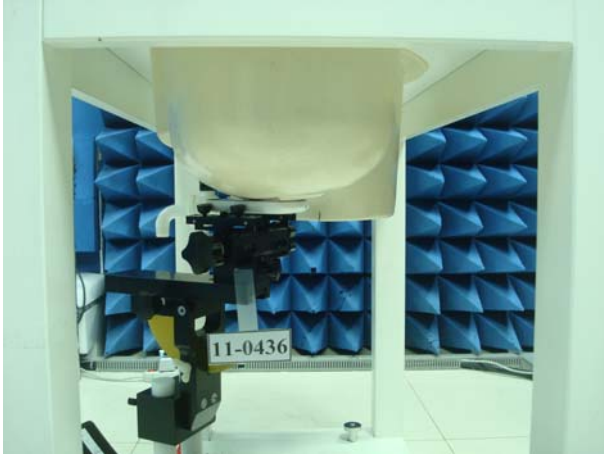


Figure 2. Right Head SAR Test Setup (Tilted)

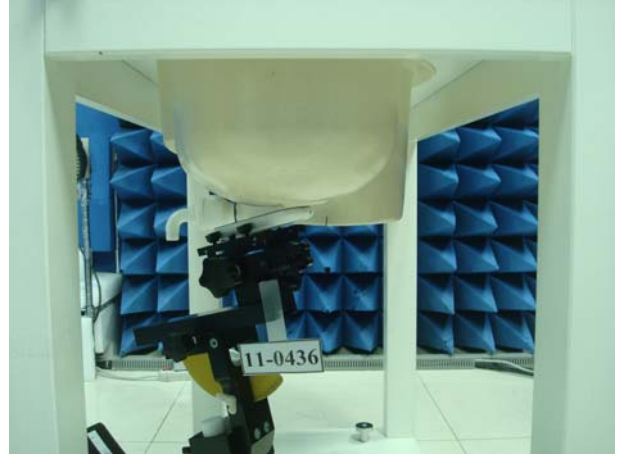


Right Cheek

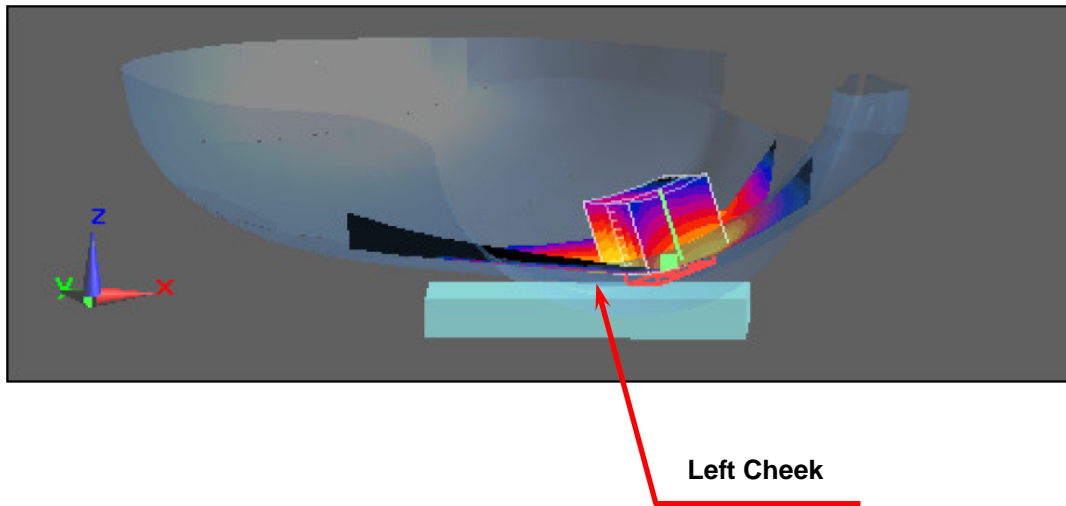
**Left Head Setup**



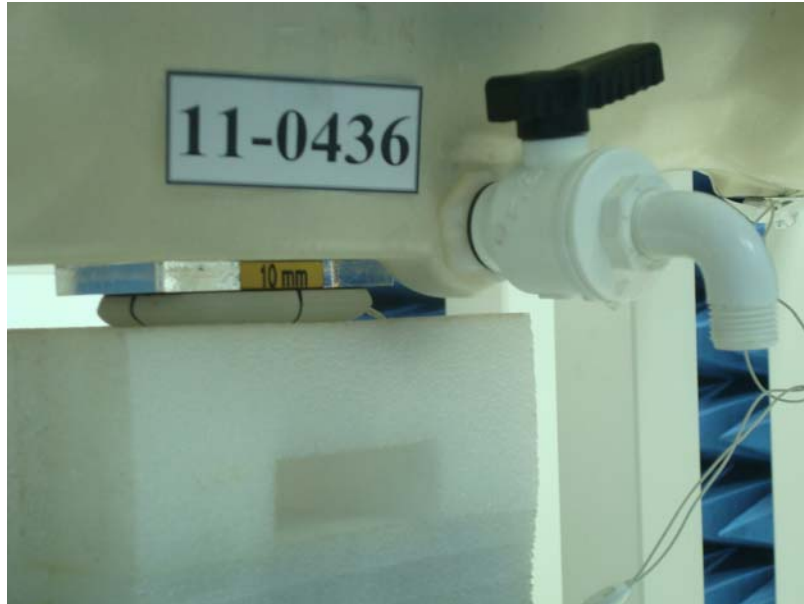
**Figure 3. Left Head SAR Test Setup (Cheek)**



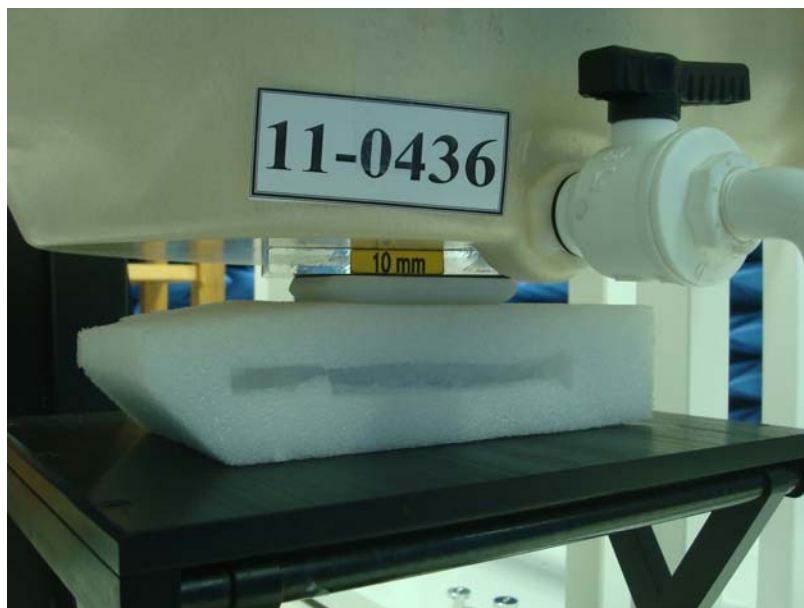
**Figure 4. Left Head SAR Test Setup (Tilted)**



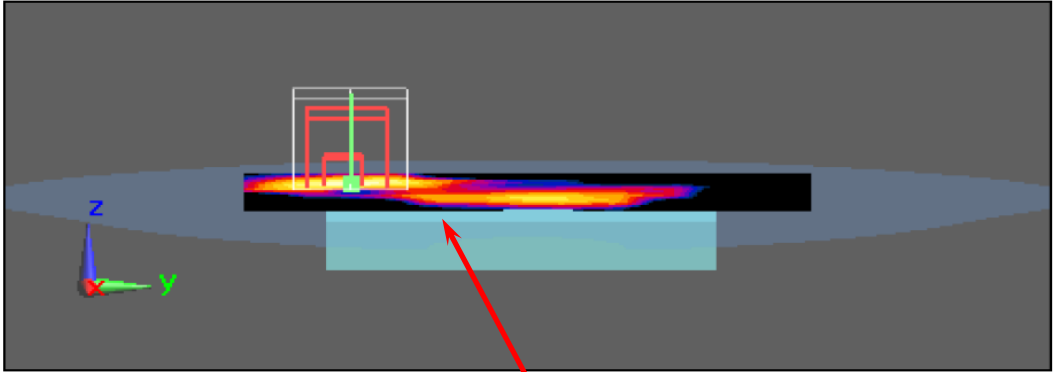
**Body Setup \_ Front Surface to Phantom 10mm (EUT with Headset)**



**Body Setup \_ Front Surface to Phantom 10mm**

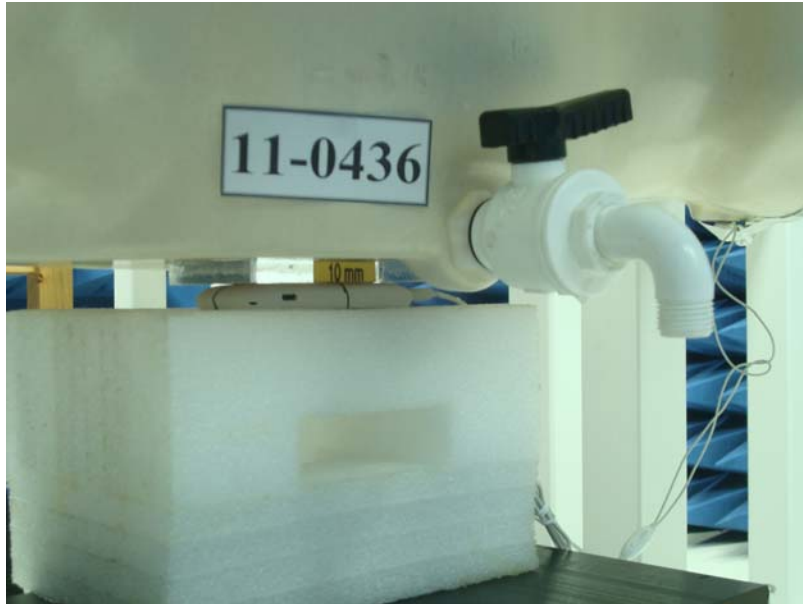


**Figure 5. Body SAR Test Setup (Flat Section)**

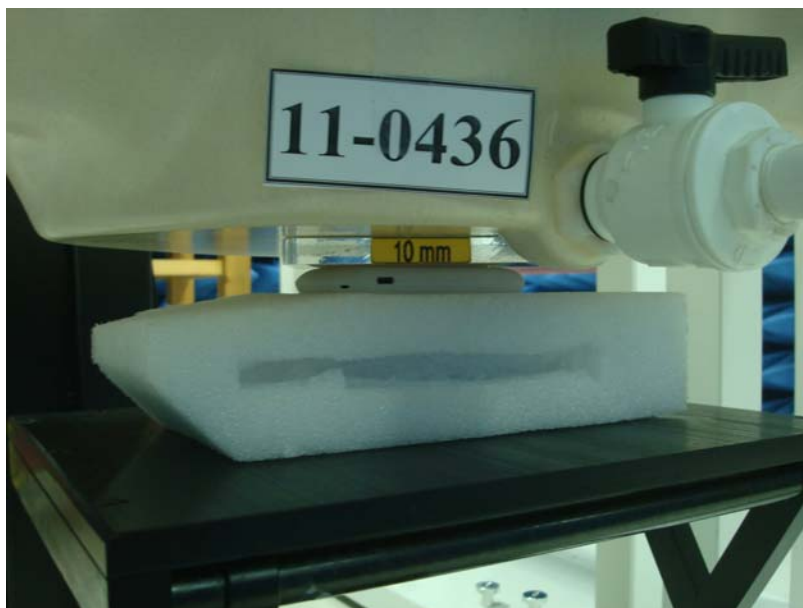


EUT Front side

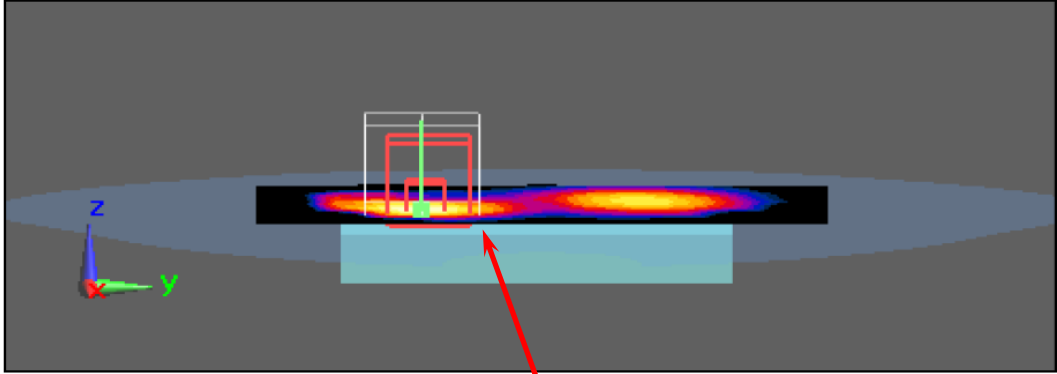
**Body Setup \_Back Surface to Phantom 10mm (EUT with Headset)**



**Body Setup \_Back Surface to Phantom 10mm**



**Figure 6. Body SAR Test Setup (Flat Section)**



**EUT Back side**

Body Setup \_ Edge Left to Phantom 10mm (EUT with Headset)

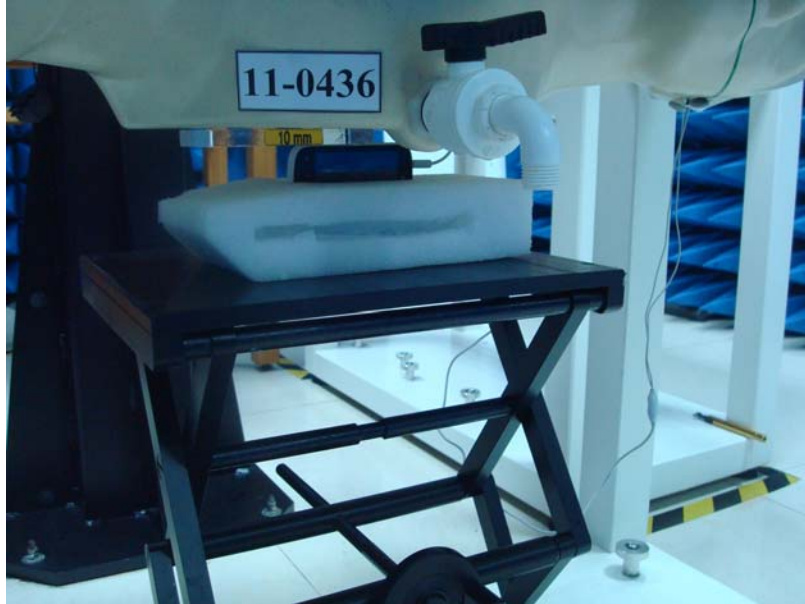
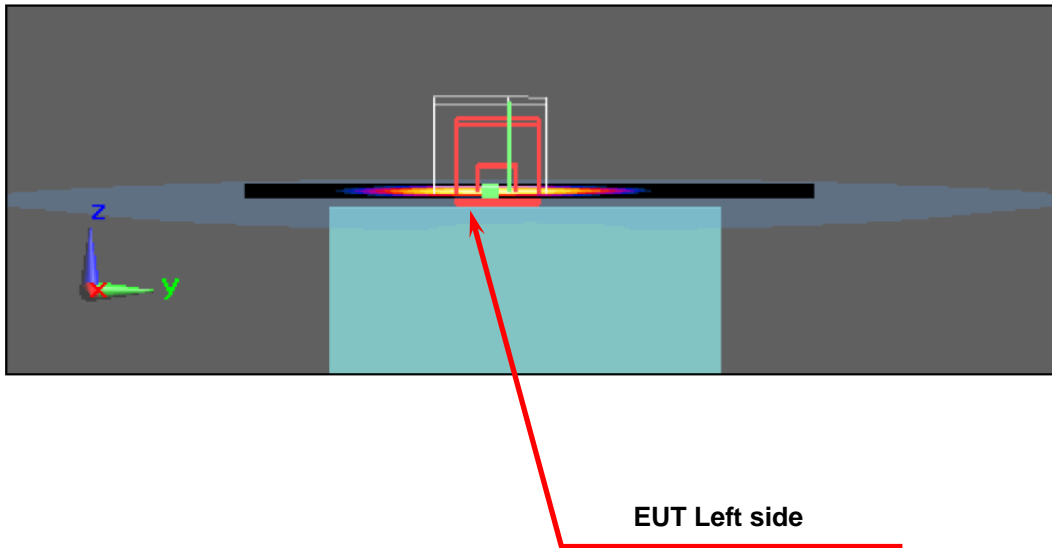


Figure 7. Body SAR Test Setup (Flat Section)



Body Setup \_ Edge Right to Phantom 10mm (EUT with Headset)

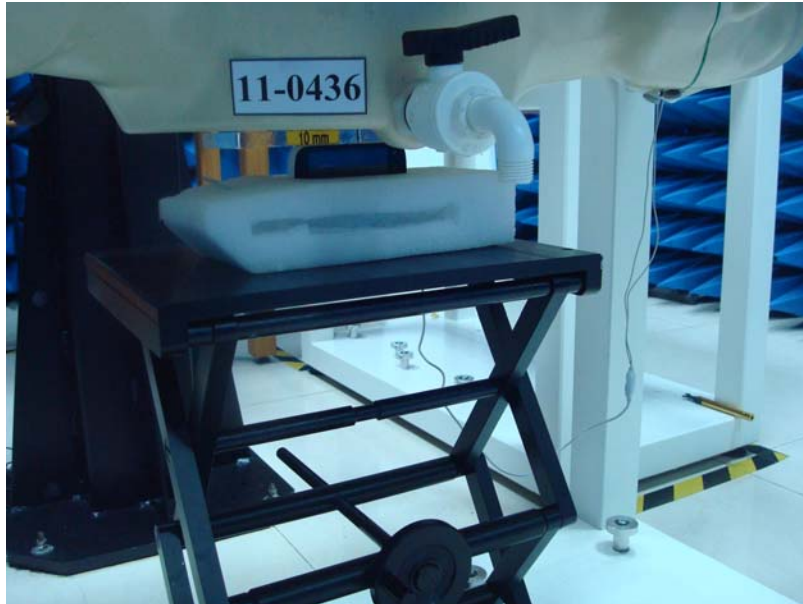
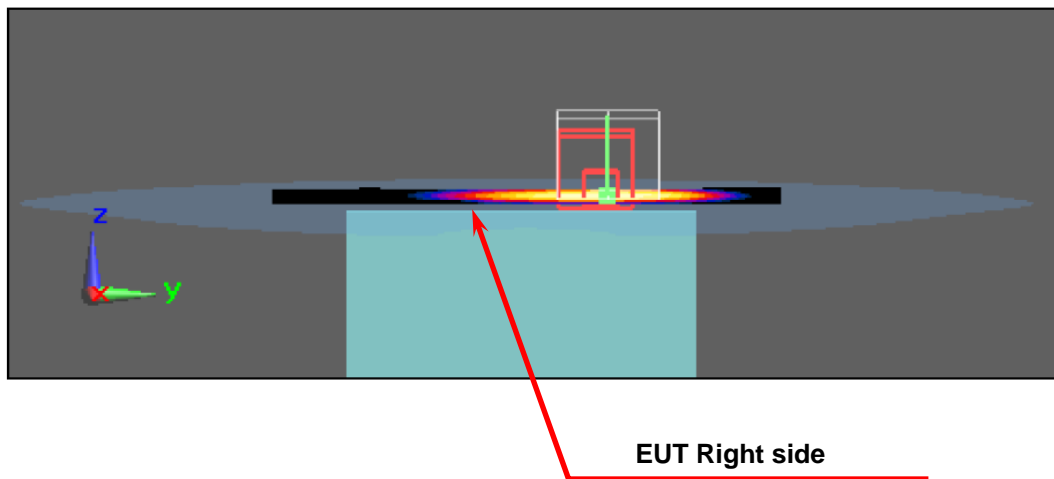


Figure 8. Body SAR Test Setup (Flat Section)

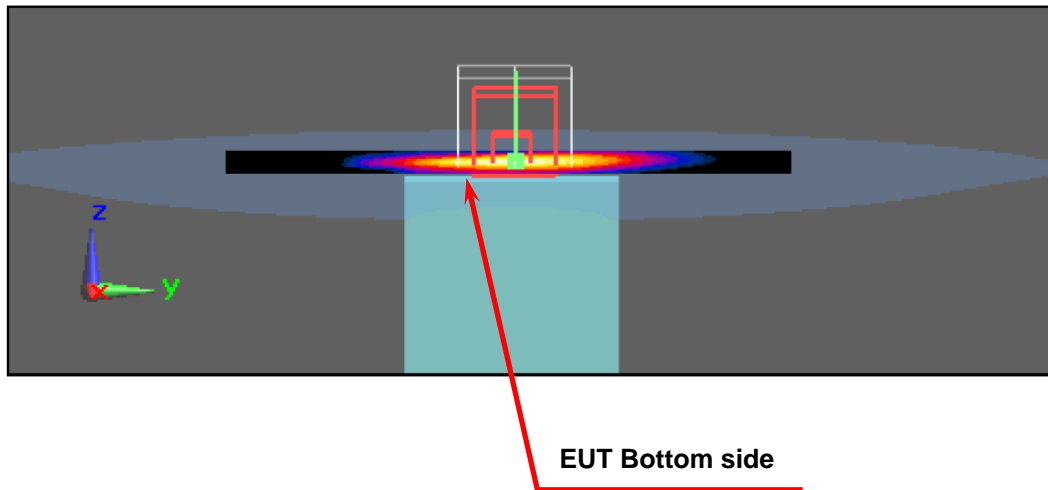




Body Setup \_ Edge Bottom to Phantom 10mm (EUT with Headset)



Figure 9. Body SAR Test Setup (Flat Section)



Body Setup \_ Edge Top to Phantom 10mm

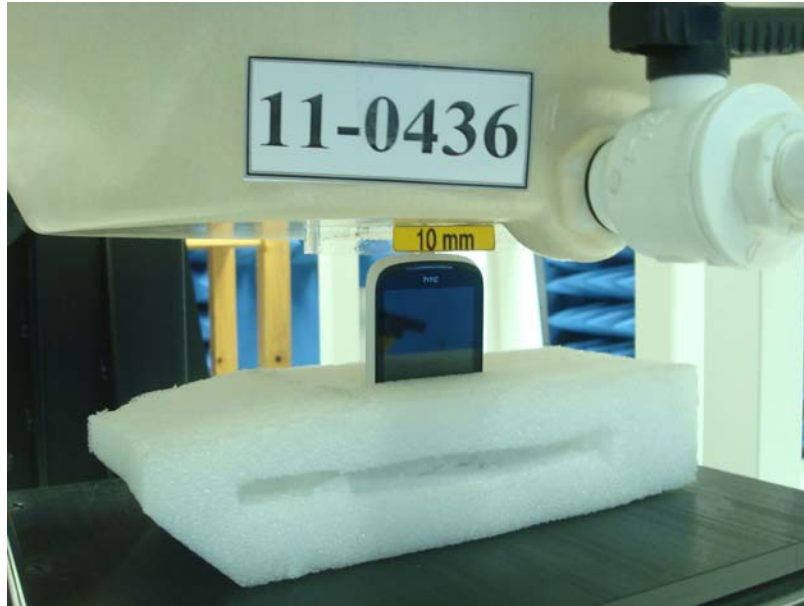


Figure 10. Body SAR Test Setup (Flat Section)

