

SAR Test Setup Photographs

Right Head Setup

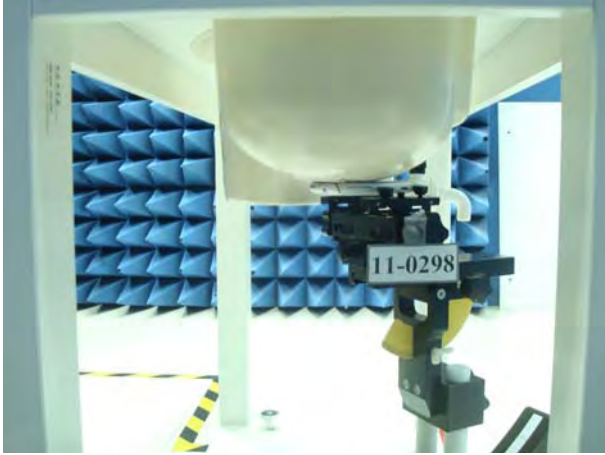


Figure 1. Right Head SAR Test Setup (Cheek)

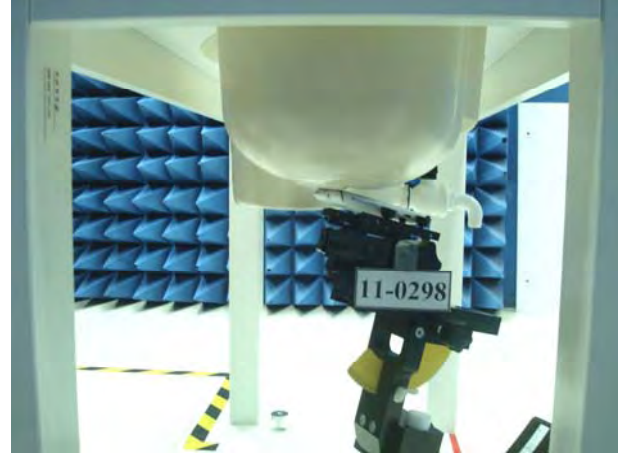
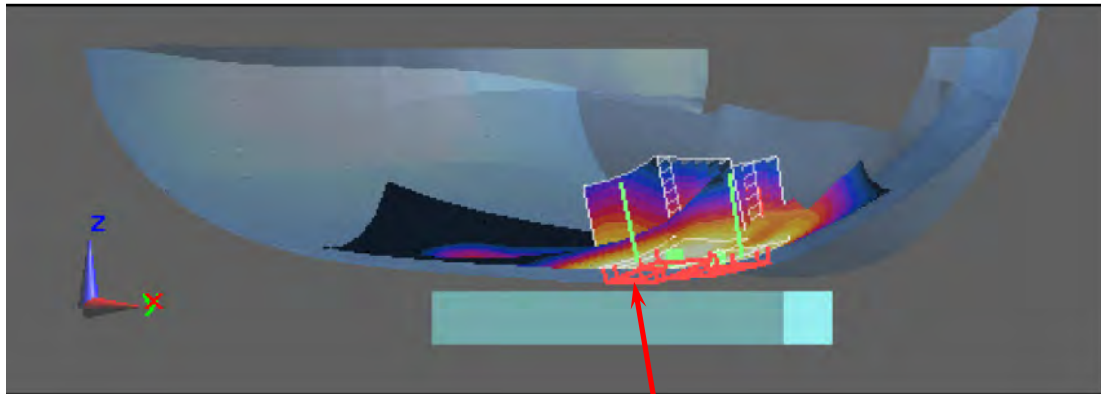


Figure 2. Right Head SAR Test Setup (Tilted)



Right Cheek

Left Head Setup

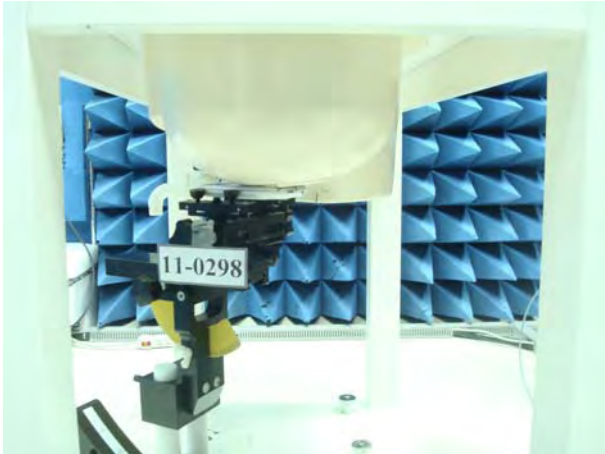
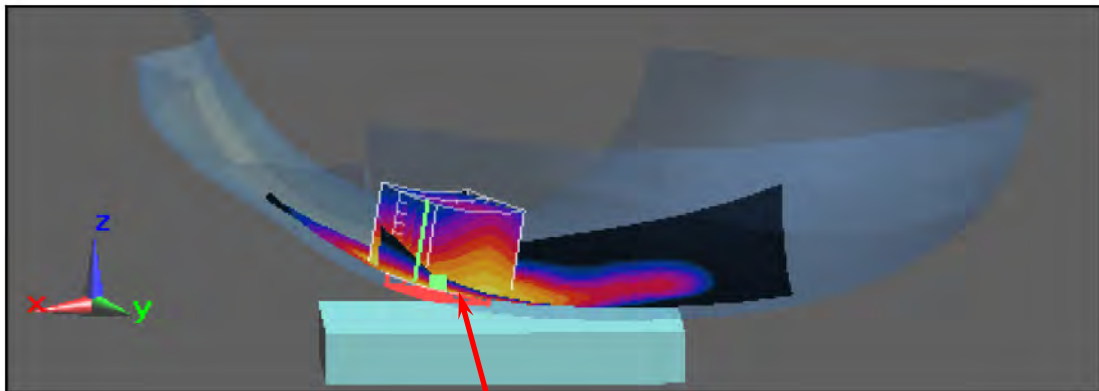


Figure 3. Left Head SAR Test Setup (Cheek)



Figure 4. Left Head SAR Test Setup (Tilted)



Left Cheek

Body Setup _ Front Surface to Phantom 15mm (EUT with Headset)

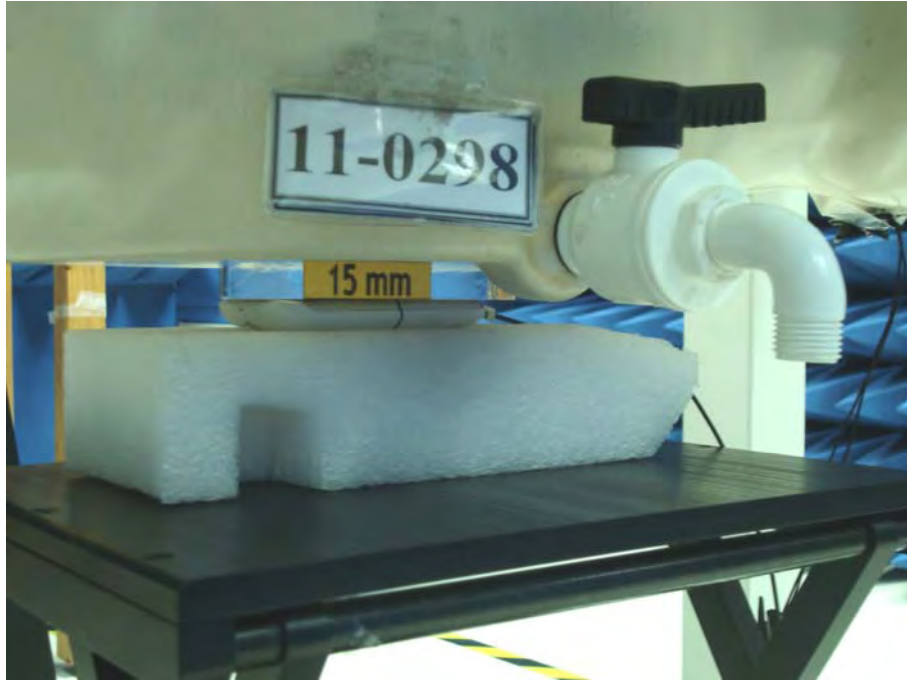
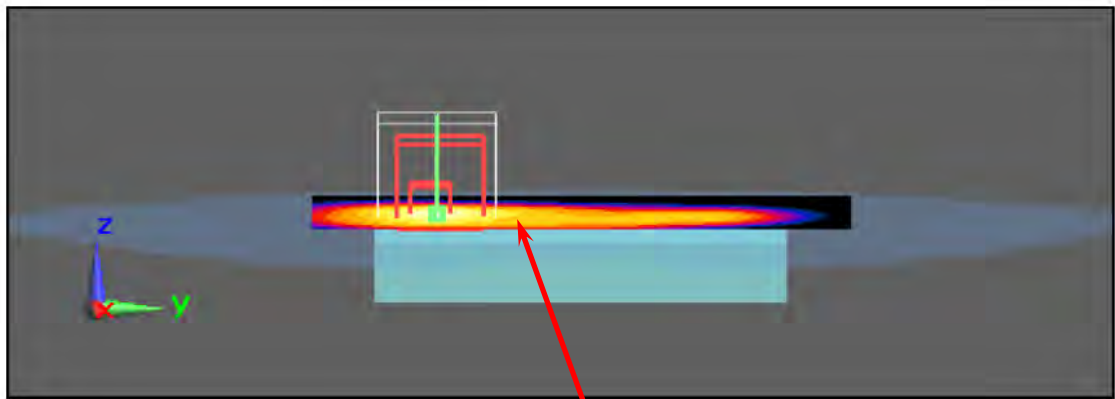


Figure 5. Body SAR Test Setup (Flat Section)



EUT Front side

Body Setup _ Front Surface to Phantom 10mm

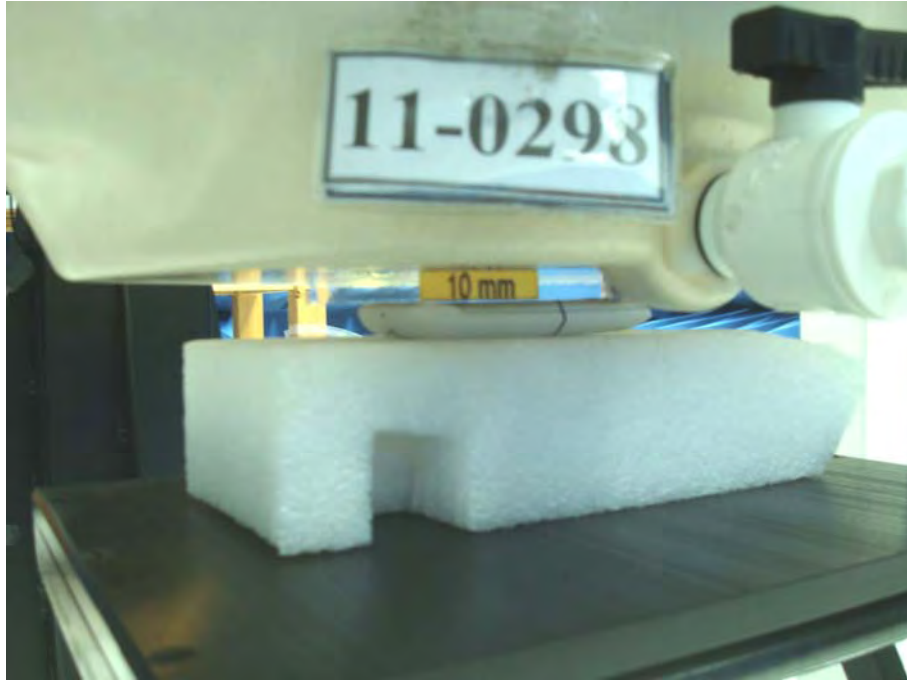
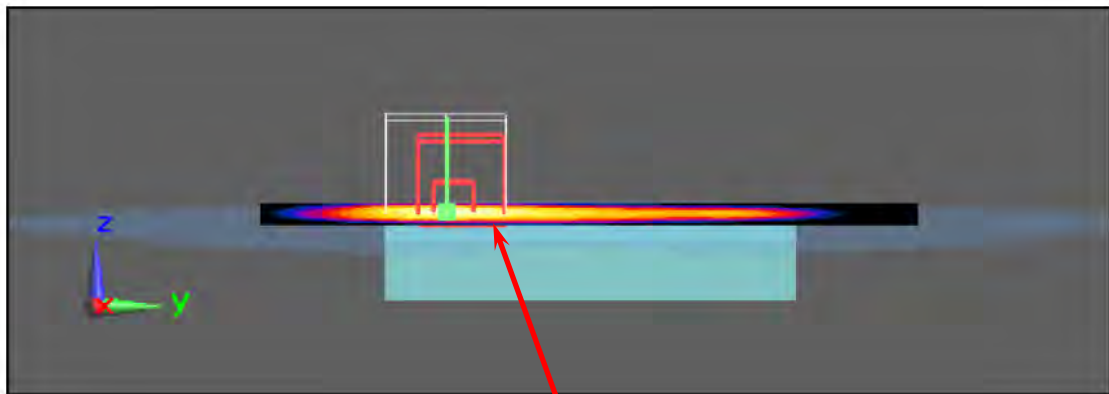


Figure 6. Body SAR Test Setup (Flat Section)



EUT Front side

Body Setup _Back Surface to Phantom 15mm (EUT with Headset)

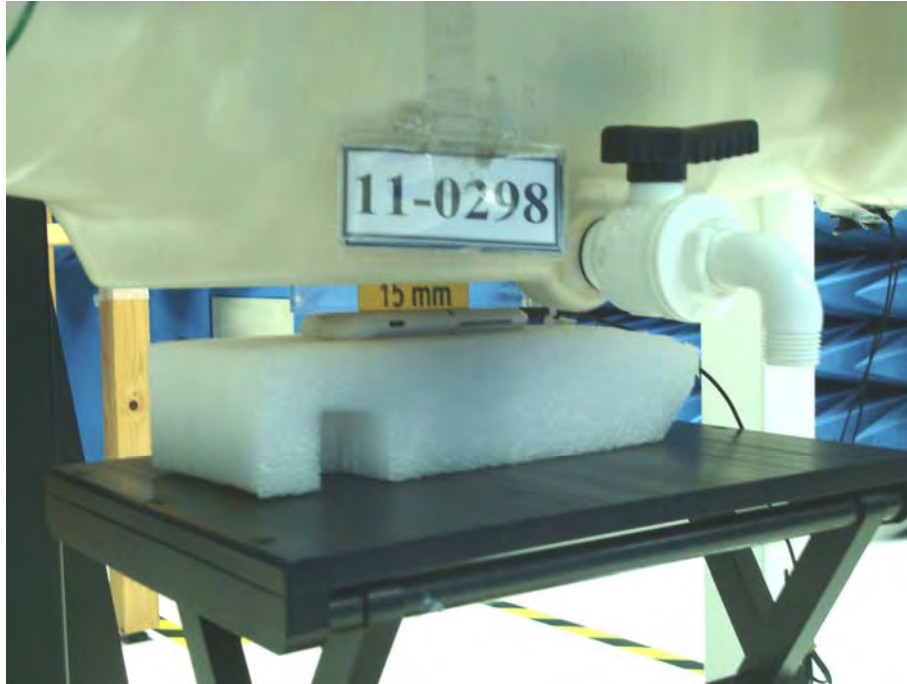
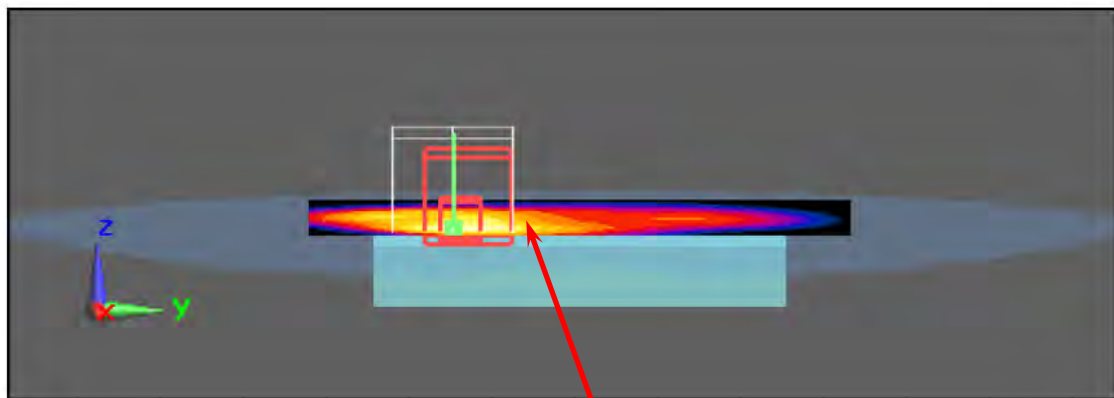


Figure 7. Body SAR Test Setup (Flat Section)

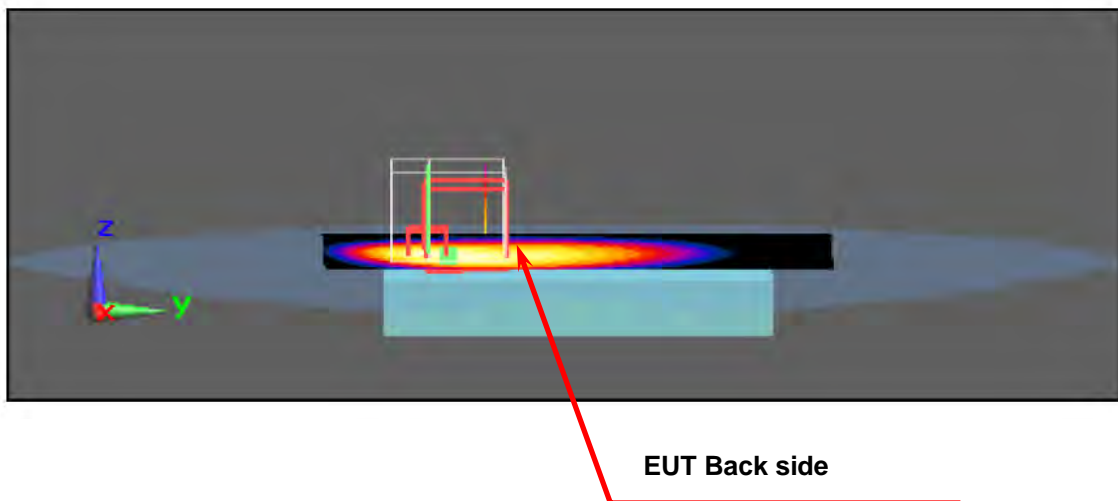


EUT Back side

Body Setup _Back Surface to Phantom 10mm



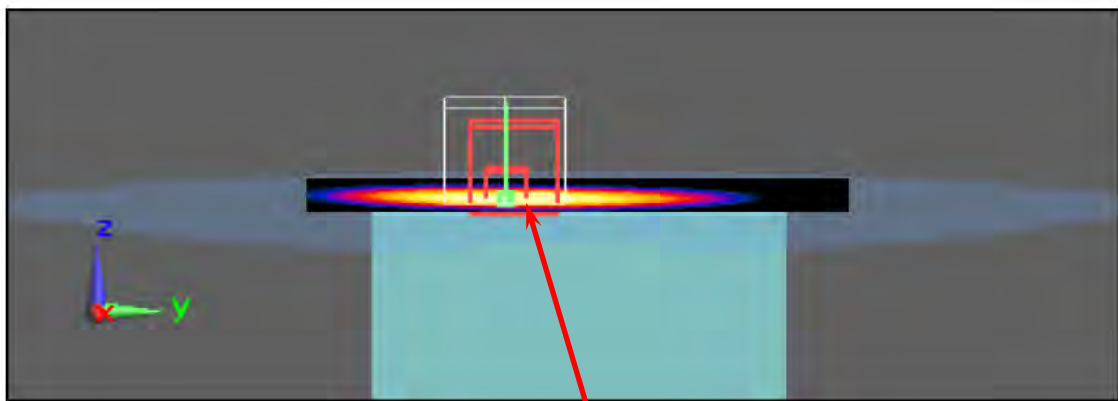
Figure 8. Body SAR Test Setup (Flat Section)



Body Setup _ Edge Left to Phantom 10mm



Figure 9. Body SAR Test Setup (Flat Section)

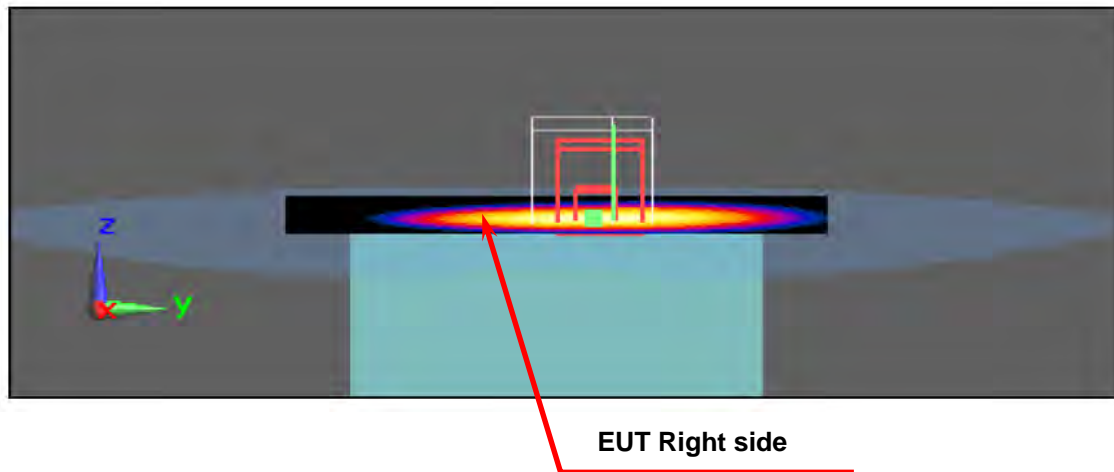


EUT Left side

Body Setup _ Edge Right to Phantom 10mm



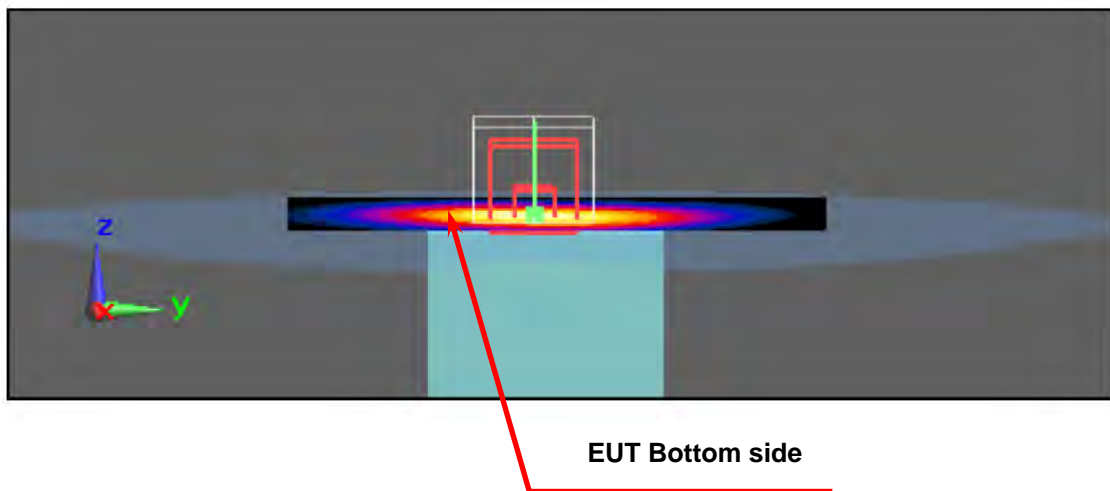
Figure 10. Body SAR Test Setup (Flat Section)



Body Setup _ Edge Bottom to Phantom 10mm



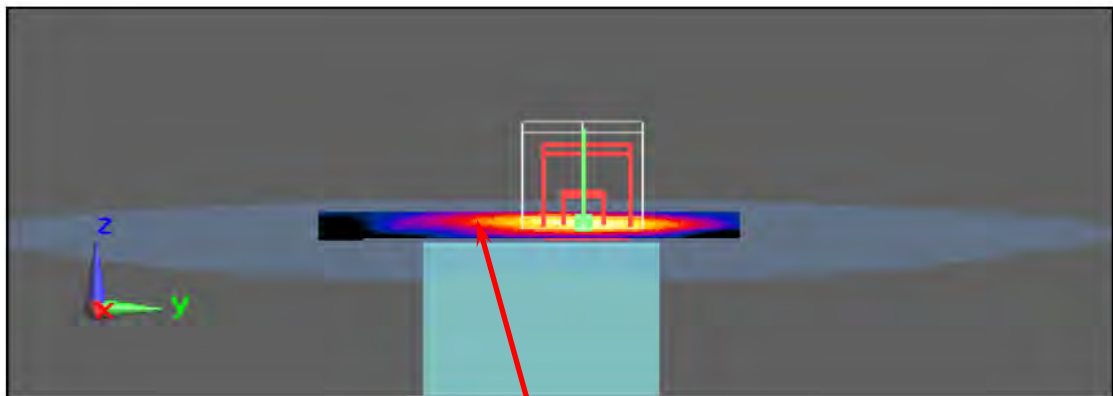
Figure 11. Body SAR Test Setup (Flat Section)



Body Setup _ Edge Top to Phantom 10mm



Figure 12. Body SAR Test Setup (Flat Section)



EUT Top side