

**#01 T-Coil\_CDMA2000 BC0\_RC1+SO3\_Ch384\_Battery 1\_Axial (Z)**

**DUT: 001550**

Communication System: CDMA ; Frequency: 836.52 MHz;Duty Cycle: 1:1

Medium: Air Medium parameters used:  $\sigma = 0$  mho/m,  $\epsilon_r = 1$ ;  $\rho = 1$  kg/m<sup>3</sup>

Ambient Temperature : 22.4 °C

DASY4 Configuration:

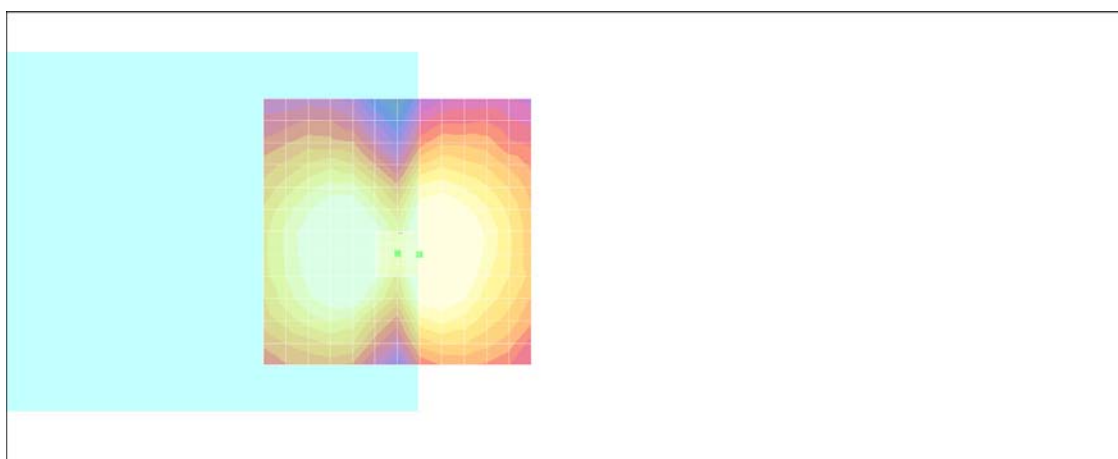
- Probe: AM1DV2 - 1038; ; Calibrated: 2010/1/21
- Sensor-Surface: 0mm (Fix Surface)
- Electronics: DAE4 Sn778; Calibrated: 2010/10/22
- Phantom: HAC Test Arch with AMCC; Type: SD HAC P01 BA;
- Measurement SW: DASY4, V4.7 Build 80; Postprocessing SW: SEMCAD, V1.8 Build 186

**Scans/z (axial) fine 2mm 8 x 8/ABM SNR(x,y,z) (5x5x1):**

ABM1/ABM2 = 46.7 dB

ABM1 comp = 12.1 dB A/m

Location: 0, 4.2, 3.7 mm



0 dB = 1.00A/m

# Scans/z (axial) wideband at best S/N/ABM Freq Resp(x,y,z,f)

Loc: 0, 4.2, 3.7 mm Diff: 0.87dB



**#01 T-Coil\_CDMA2000 BC0\_RC1+SO3\_Ch384\_Battery 1\_Radial 1 (X)**

**DUT: 0O1550**

Communication System: CDMA ; Frequency: 836.52 MHz;Duty Cycle: 1:1

Medium: Air Medium parameters used:  $\sigma = 0$  mho/m,  $\epsilon_r = 1$ ;  $\rho = 1$  kg/m<sup>3</sup>

Ambient Temperature : 22.4 °C

DASY4 Configuration:

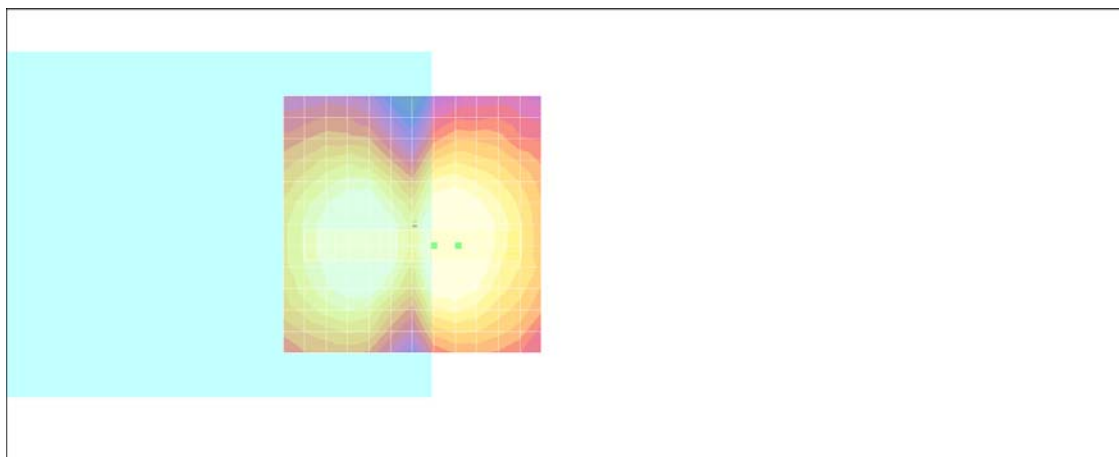
- Probe: AM1DV2 - 1038; ; Calibrated: 2010/1/21
- Sensor-Surface: 0mm (Fix Surface)
- Electronics: DAE4 Sn778; Calibrated: 2010/10/22
- Phantom: HAC Test Arch with AMCC; Type: SD HAC P01 BA;
- Measurement SW: DASY4, V4.7 Build 80; Postprocessing SW: SEMCAD, V1.8 Build 186

**Scans/x (longitudinal) fine 3mm 42 x 6/ABM SNR(x,y,z) (15x3x1):**

ABM1/ABM2 = 32.1 dB

ABM1 comp = 3.70 dB A/m

Location: -9, 4.2, 3.7 mm



0 dB = 1.00A/m

**#01 T-Coil\_CDMA2000 BC0\_RC1+SO3\_Ch384\_Battery 1\_Radial 2 (Y)**

**DUT: 001550**

Communication System: CDMA ; Frequency: 836.52 MHz;Duty Cycle: 1:1

Medium: Air Medium parameters used:  $\sigma = 0$  mho/m,  $\epsilon_r = 1$ ;  $\rho = 1$  kg/m<sup>3</sup>

Ambient Temperature : 22.4 °C

DASY4 Configuration:

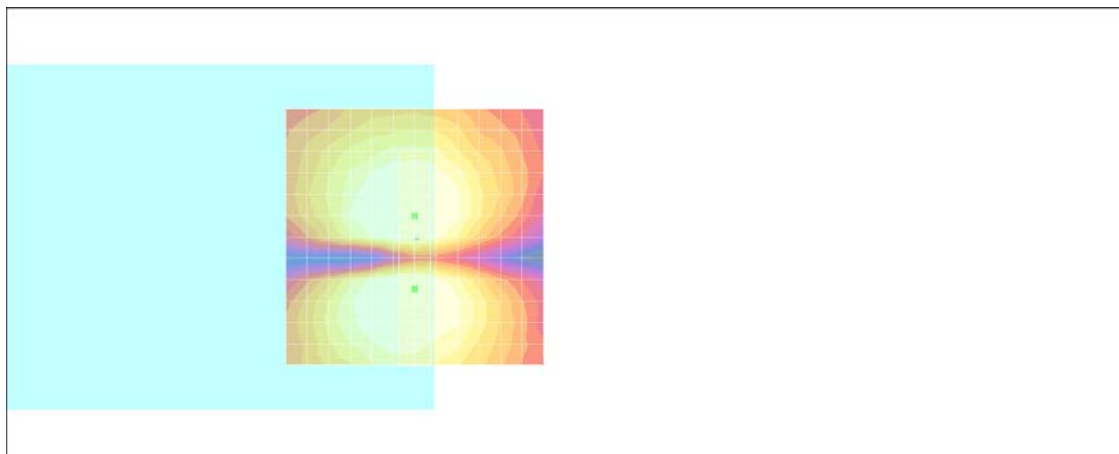
- Probe: AM1DV2 - 1038; ; Calibrated: 2010/1/21
- Sensor-Surface: 0mm (Fix Surface)
- Electronics: DAE4 Sn778; Calibrated: 2010/10/22
- Phantom: HAC Test Arch with AMCC; Type: SD HAC P01 BA;
- Measurement SW: DASY4, V4.7 Build 80; Postprocessing SW: SEMCAD, V1.8 Build 186

**Scans/y (transversal) fine 3mm 6 x 42/ABM SNR(x,y,z) (3x15x1):**

ABM1/ABM2 = 45.8 dB

ABM1 comp = 3.64 dB A/m

Location: 0, 10.2, 3.7 mm



0 dB = 1.00A/m

## #02 T-Coil\_CDMA2000 BC0\_RC1+SO3\_Ch1013\_Battery 1\_Axial (Z)

**DUT: 001550**

Communication System: CDMA ; Frequency: 824.7 MHz;Duty Cycle: 1:1

Medium: Air Medium parameters used:  $\sigma = 0$  mho/m,  $\epsilon_r = 1$ ;  $\rho = 1$  kg/m<sup>3</sup>

Ambient Temperature : 22.4 °C

DASY4 Configuration:

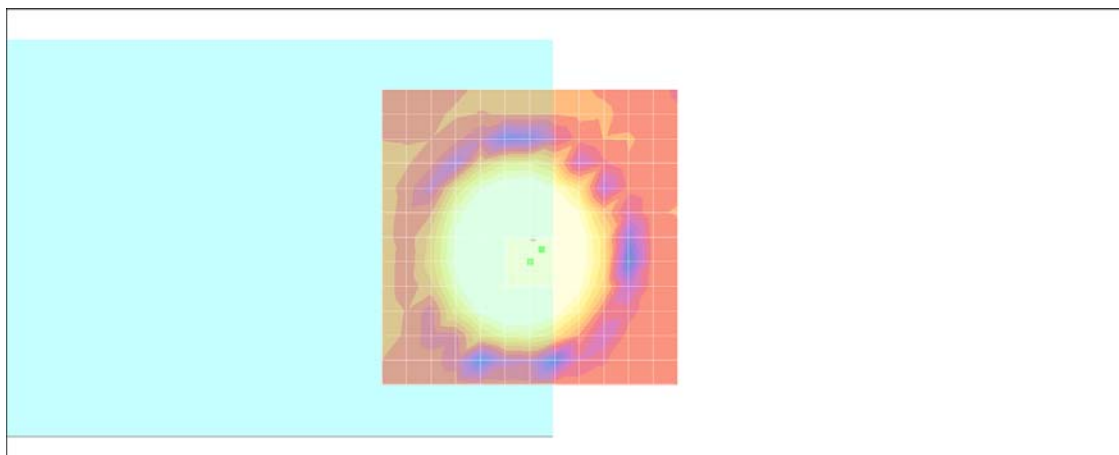
- Probe: AM1DV2 - 1038; ; Calibrated: 2010/1/21
- Sensor-Surface: 0mm (Fix Surface)
- Electronics: DAE4 Sn778; Calibrated: 2010/10/22
- Phantom: HAC Test Arch with AMCC; Type: SD HAC P01 BA;
- Measurement SW: DASY4, V4.7 Build 80; Postprocessing SW: SEMCAD, V1.8 Build 186

**Scans/z (axial) fine 2mm 8 x 8/ABM SNR(x,y,z) (5x5x1):**

ABM1/ABM2 = 47.2 dB

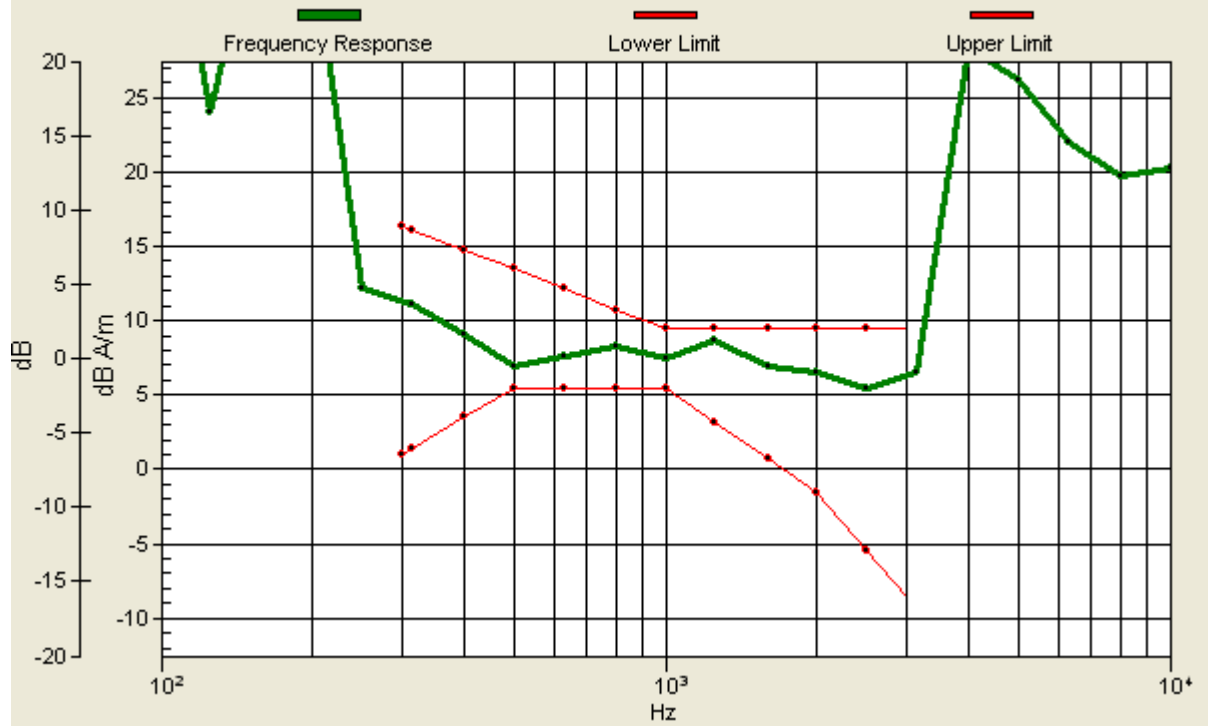
ABM1 comp = 11.9 dB A/m

Location: -2, 2.2, 3.7 mm



# Scans/z (axial) wideband at best S/N/ABM Freq Resp(x,y,z,f)

Loc: -2, 2.2, 3.7 mm Diff: 0.84dB



## #02 T-Coil\_CDMA2000 BC0\_RC1+SO3\_Ch1013\_Battery 1\_Radial 1 (X)

**DUT: 001550**

Communication System: CDMA ; Frequency: 824.7 MHz;Duty Cycle: 1:1

Medium: Air Medium parameters used:  $\sigma = 0$  mho/m,  $\epsilon_r = 1$ ;  $\rho = 1$  kg/m<sup>3</sup>

Ambient Temperature : 22.4 °C

DASY4 Configuration:

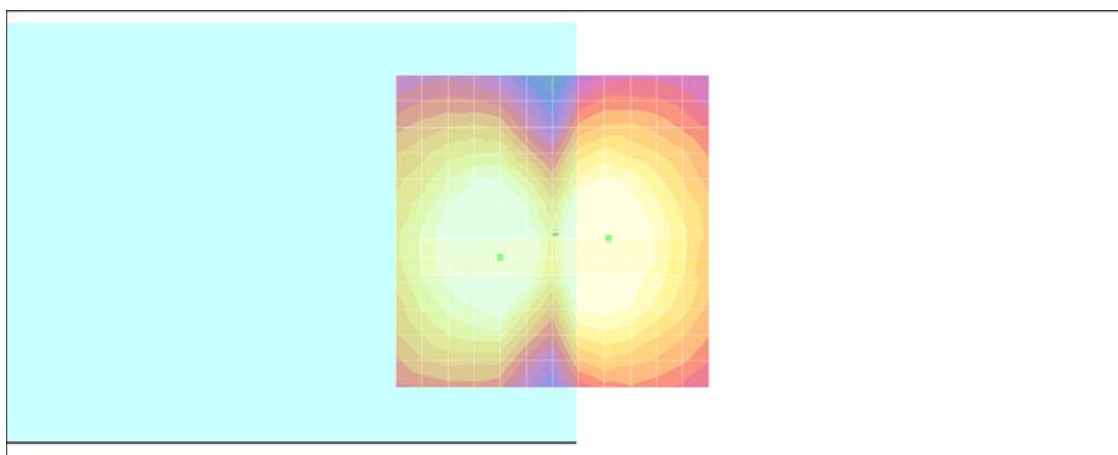
- Probe: AM1DV2 - 1038; ; Calibrated: 2010/1/21
- Sensor-Surface: 0mm (Fix Surface)
- Electronics: DAE4 Sn778; Calibrated: 2010/10/22
- Phantom: HAC Test Arch with AMCC; Type: SD HAC P01 BA;
- Measurement SW: DASY4, V4.7 Build 80; Postprocessing SW: SEMCAD, V1.8 Build 186

**Scans/x (longitudinal) fine 3mm 42 x 6/ABM SNR(x,y,z) (15x3x1):**

ABM1/ABM2 = 31.9 dB

ABM1 comp = 3.17 dB A/m

Location: -9, 1.2, 3.7 mm



0 dB = 1.00A/m

## #02 T-Coil\_CDMA2000 BC0\_RC1+SO3\_Ch1013\_Battery 1\_Radial 2 (Y)

**DUT: 001550**

Communication System: CDMA ; Frequency: 824.7 MHz;Duty Cycle: 1:1

Medium: Air Medium parameters used:  $\sigma = 0$  mho/m,  $\epsilon_r = 1$ ;  $\rho = 1$  kg/m<sup>3</sup>

Ambient Temperature : 22.4 °C

DASY4 Configuration:

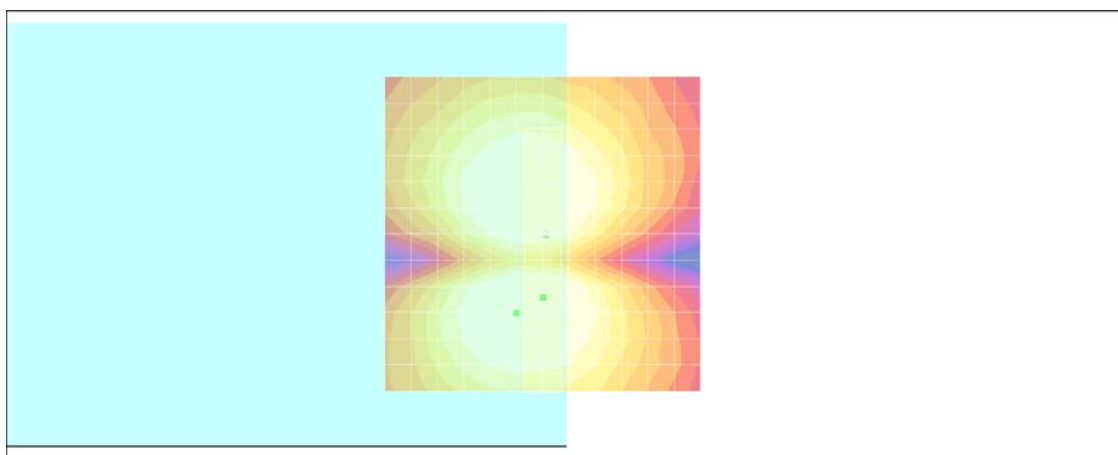
- Probe: AM1DV2 - 1038; ; Calibrated: 2010/1/21
- Sensor-Surface: 0mm (Fix Surface)
- Electronics: DAE4 Sn778; Calibrated: 2010/10/22
- Phantom: HAC Test Arch with AMCC; Type: SD HAC P01 BA;
- Measurement SW: DASY4, V4.7 Build 80; Postprocessing SW: SEMCAD, V1.8 Build 186

**Scans/y (transversal) fine 3mm 6 x 42/ABM SNR(x,y,z) (3x15x1):**

ABM1/ABM2 = 48.7 dB

ABM1 comp = 5.22 dB A/m

Location: 0, 10.2, 3.7 mm



0 dB = 1.00A/m



### #03 T-Coil\_CDMA2000 BC0\_RC1+SO3\_Ch777\_Battery 1\_Axial (Z)

**DUT: 001550**

Communication System: CDMA ; Frequency: 848.31 MHz;Duty Cycle: 1:1

Medium: Air Medium parameters used:  $\sigma = 0$  mho/m,  $\epsilon_r = 1$ ;  $\rho = 1$  kg/m<sup>3</sup>

Ambient Temperature : 22.4 °C

DASY4 Configuration:

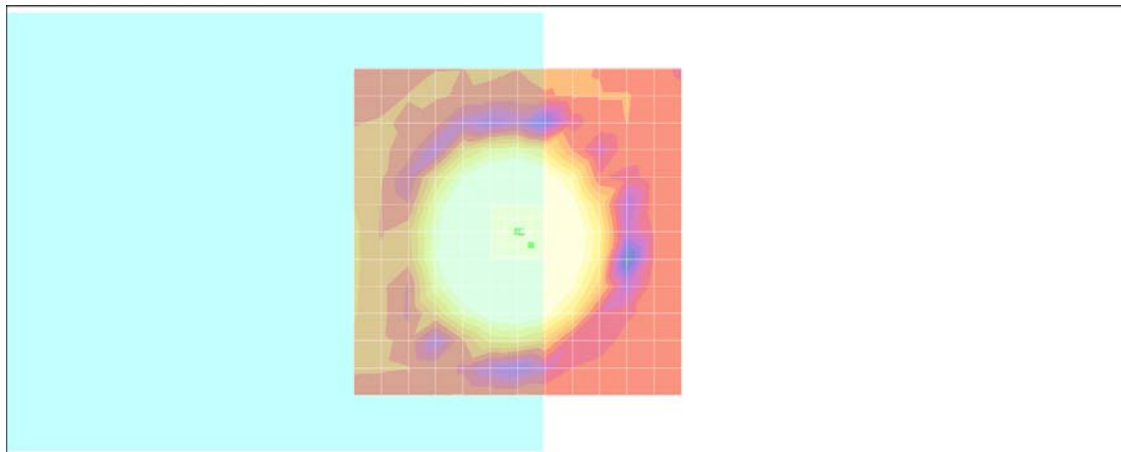
- Probe: AM1DV2 - 1038; ; Calibrated: 2010/1/21
- Sensor-Surface: 0mm (Fix Surface)
- Electronics: DAE4 Sn778; Calibrated: 2010/10/22
- Phantom: HAC Test Arch with AMCC; Type: SD HAC P01 BA;
- Measurement SW: DASY4, V4.7 Build 80; Postprocessing SW: SEMCAD, V1.8 Build 186

**Scans/z (axial) fine 2mm 8 x 8/ABM SNR(x,y,z) (5x5x1):**

ABM1/ABM2 = 46.6 dB

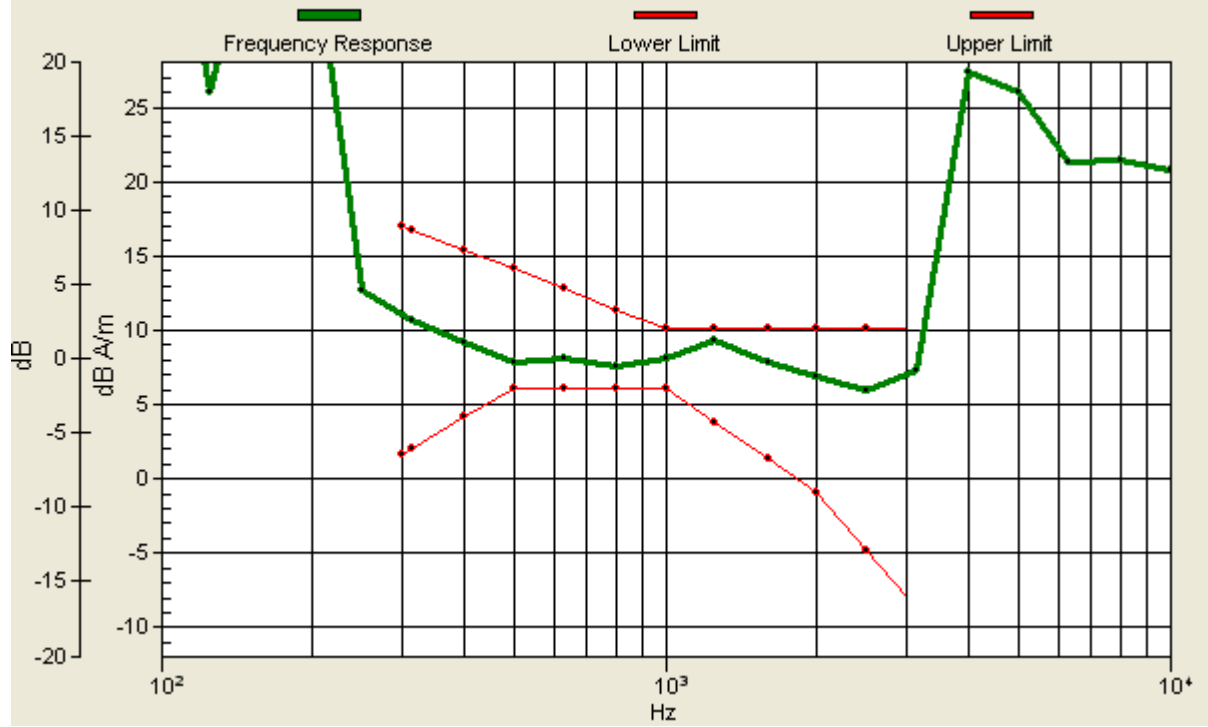
ABM1 comp = 12.5 dB A/m

Location: -2, 2, 3.7 mm



# Scans/z (axial) wideband at best S/N/ABM Freq Resp(x,y,z,f)

Loc: -2, 2, 3.7 mm Diff: 0.76dB



### #03 T-Coil\_CDMA2000 BC0\_RC1+SO3\_Ch777\_Battery \_Radial 1 (X)

**DUT: 001550**

Communication System: CDMA ; Frequency: 848.31 MHz;Duty Cycle: 1:1

Medium: Air Medium parameters used:  $\sigma = 0$  mho/m,  $\epsilon_r = 1$ ;  $\rho = 1$  kg/m<sup>3</sup>

Ambient Temperature : 22.4 °C

DASY4 Configuration:

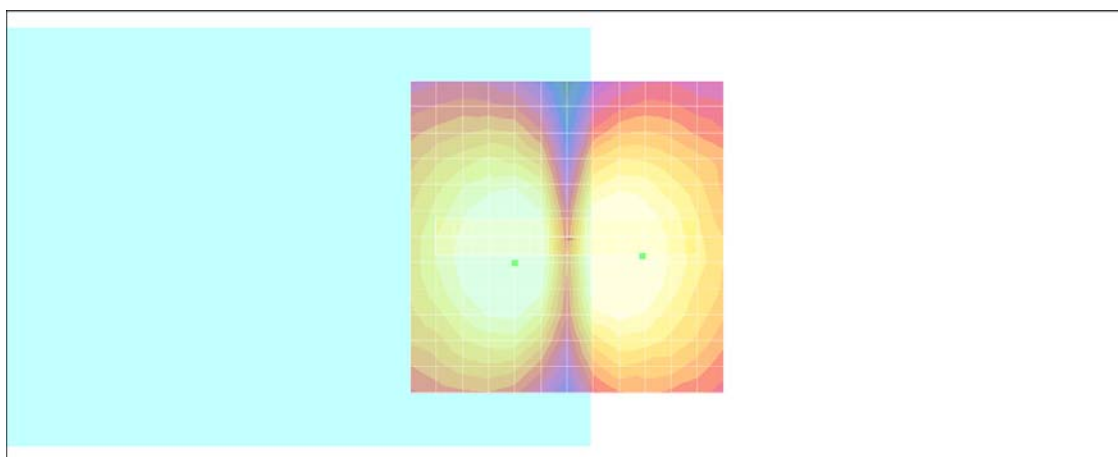
- Probe: AM1DV2 - 1038; ; Calibrated: 2010/1/21
- Sensor-Surface: 0mm (Fix Surface)
- Electronics: DAE4 Sn778; Calibrated: 2010/10/22
- Phantom: HAC Test Arch with AMCC; Type: SD HAC P01 BA;
- Measurement SW: DASY4, V4.7 Build 80; Postprocessing SW: SEMCAD, V1.8 Build 186

**Scans/x (longitudinal) fine 3mm 42 x 6/ABM SNR(x,y,z) (15x3x1):**

ABM1/ABM2 = 30.4 dB

ABM1 comp = 1.40 dB A/m

Location: -12, 3, 3.7 mm



0 dB = 1.00A/m

### #03 T-Coil\_CDMA2000 BC0\_RC1+SO3\_Ch777\_Battery 1\_Radial 2 (Y)

**DUT: 001550**

Communication System: CDMA ; Frequency: 848.31 MHz;Duty Cycle: 1:1

Medium: Air Medium parameters used:  $\sigma = 0$  mho/m,  $\epsilon_r = 1$ ;  $\rho = 1$  kg/m<sup>3</sup>

Ambient Temperature : 22.4 °C

DASY4 Configuration:

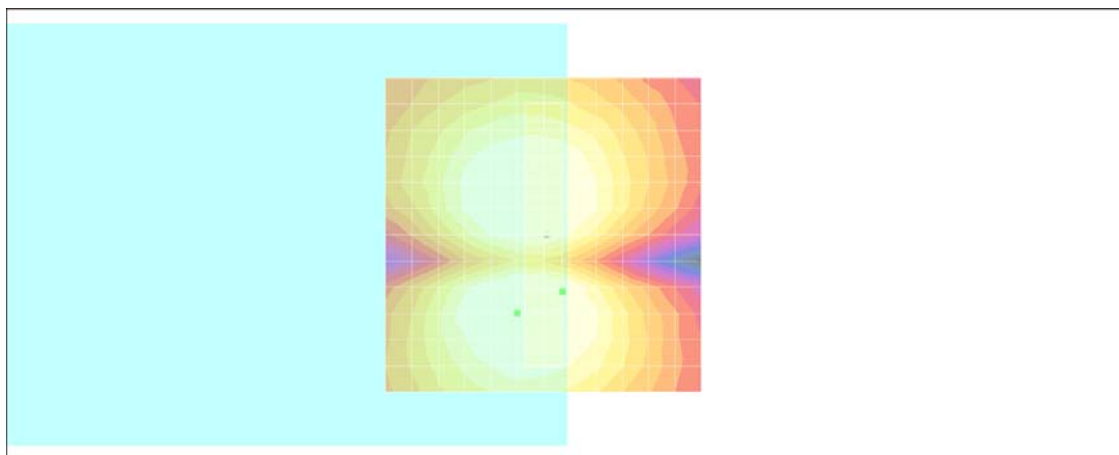
- Probe: AM1DV2 - 1038; ; Calibrated: 2010/1/21
- Sensor-Surface: 0mm (Fix Surface)
- Electronics: DAE4 Sn778; Calibrated: 2010/10/22
- Phantom: HAC Test Arch with AMCC; Type: SD HAC P01 BA;
- Measurement SW: DASY4, V4.7 Build 80; Postprocessing SW: SEMCAD, V1.8 Build 186

**Scans/y (transversal) fine 3mm 6 x 42/ABM SNR(x,y,z) (3x15x1):**

ABM1/ABM2 = 47.4 dB

ABM1 comp = 3.13 dB A/m

Location: -3, 9, 3.7 mm



0 dB = 1.00A/m

## #04 T-Coil\_CDMA2000 BC0\_RC1+SO3\_Ch777\_Battery 2\_Axial (Z)

**DUT: 001550**

Communication System: CDMA ; Frequency: 848.31 MHz;Duty Cycle: 1:1

Medium: Air Medium parameters used:  $\sigma = 0$  mho/m,  $\epsilon_r = 1$ ;  $\rho = 1$  kg/m<sup>3</sup>

Ambient Temperature : 22.4 °C

DASY4 Configuration:

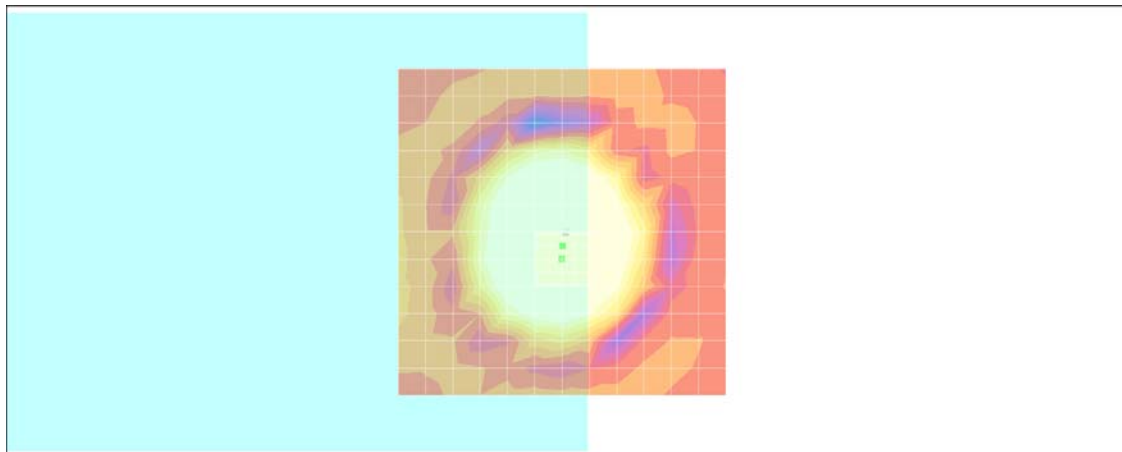
- Probe: AM1DV2 - 1038; ; Calibrated: 2010/1/21
- Sensor-Surface: 0mm (Fix Surface)
- Electronics: DAE4 Sn778; Calibrated: 2010/10/22
- Phantom: HAC Test Arch with AMCC; Type: SD HAC P01 BA;
- Measurement SW: DASY4, V4.7 Build 80; Postprocessing SW: SEMCAD, V1.8 Build 186

**Scans/z (axial) fine 2mm 8 x 8/ABM SNR(x,y,z) (5x5x1):**

ABM1/ABM2 = 46.5 dB

ABM1 comp = 13.2 dB A/m

Location: 0, 2.2, 3.7 mm



# Scans/z (axial) wideband at best S/N/ABM Freq Resp(x,y,z,f)

Loc: 0, 2.2, 3.7 mm Diff: 1.83dB



## #04 T-Coil\_CDMA2000 BC0\_RC1+SO3\_Ch777\_Battery 2\_Radial 1 (X)

**DUT: 001550**

Communication System: CDMA ; Frequency: 848.31 MHz;Duty Cycle: 1:1

Medium: Air Medium parameters used:  $\sigma = 0$  mho/m,  $\epsilon_r = 1$ ;  $\rho = 1$  kg/m<sup>3</sup>

Ambient Temperature : 22.4 °C

DASY4 Configuration:

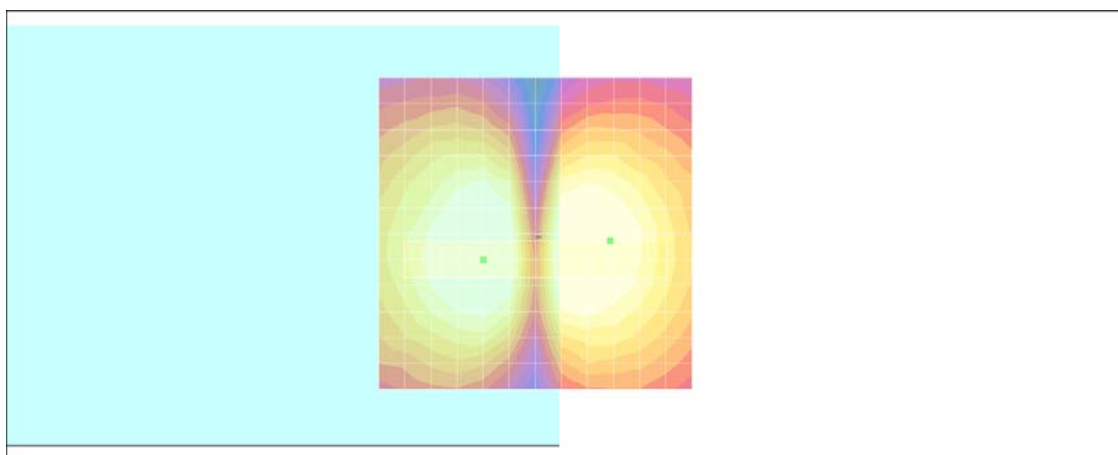
- Probe: AM1DV2 - 1038; ; Calibrated: 2010/1/21
- Sensor-Surface: 0mm (Fix Surface)
- Electronics: DAE4 Sn778; Calibrated: 2010/10/22
- Phantom: HAC Test Arch with AMCC; Type: SD HAC P01 BA;
- Measurement SW: DASY4, V4.7 Build 80; Postprocessing SW: SEMCAD, V1.8 Build 186

**Scans/x (longitudinal) fine 3mm 42 x 6/ABM SNR(x,y,z) (15x3x1):**

ABM1/ABM2 = 31.3 dB

ABM1 comp = 1.86 dB A/m

Location: -12, 1.2, 3.7 mm



0 dB = 1.00A/m

## #04 T-Coil\_CDMA2000 BC0\_RC1+SO3\_Ch777\_Battery 2\_Radial 2 (Y)

**DUT: 001550**

Communication System: CDMA ; Frequency: 848.31 MHz;Duty Cycle: 1:1

Medium: Air Medium parameters used:  $\sigma = 0$  mho/m,  $\epsilon_r = 1$ ;  $\rho = 1$  kg/m<sup>3</sup>

Ambient Temperature : 22.4 °C

DASY4 Configuration:

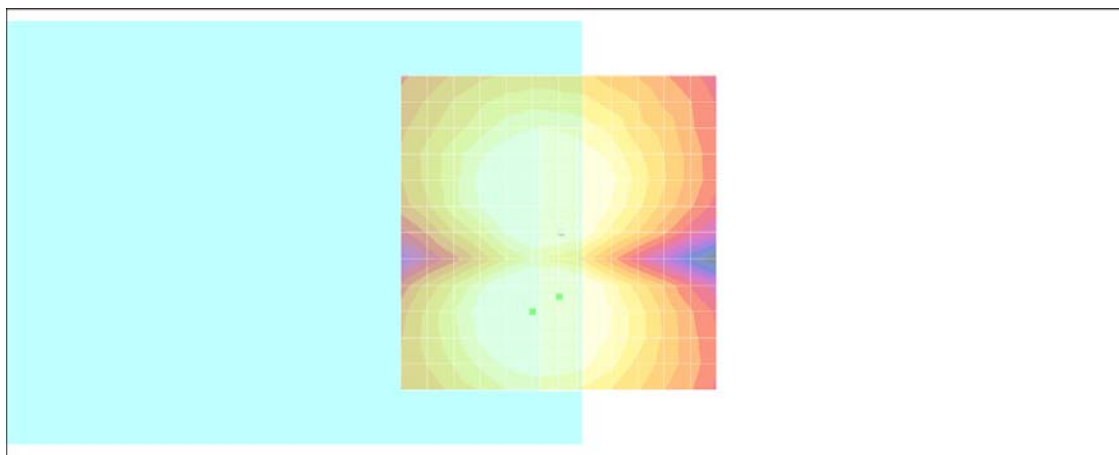
- Probe: AM1DV2 - 1038; ; Calibrated: 2010/1/21
- Sensor-Surface: 0mm (Fix Surface)
- Electronics: DAE4 Sn778; Calibrated: 2010/10/22
- Phantom: HAC Test Arch with AMCC; Type: SD HAC P01 BA;
- Measurement SW: DASY4, V4.7 Build 80; Postprocessing SW: SEMCAD, V1.8 Build 186

**Scans/y (transversal) fine 3mm 6 x 42/ABM SNR(x,y,z) (3x15x1):**

ABM1/ABM2 = 49.8 dB

ABM1 comp = 6.08 dB A/m

Location: 0, 10.2, 3.7 mm



0 dB = 1.00A/m



## #05 T-Coil\_CDMA2000 BC1\_RC1+SO3\_Ch600\_Battery 1\_Axial (Z)

**DUT: 001550**

Communication System: CDMA ; Frequency: 1880 MHz;Duty Cycle: 1:1

Medium: Air Medium parameters used:  $\sigma = 0$  mho/m,  $\epsilon_r = 1$ ;  $\rho = 1$  kg/m<sup>3</sup>

Ambient Temperature : 22.4 °C

DASY4 Configuration:

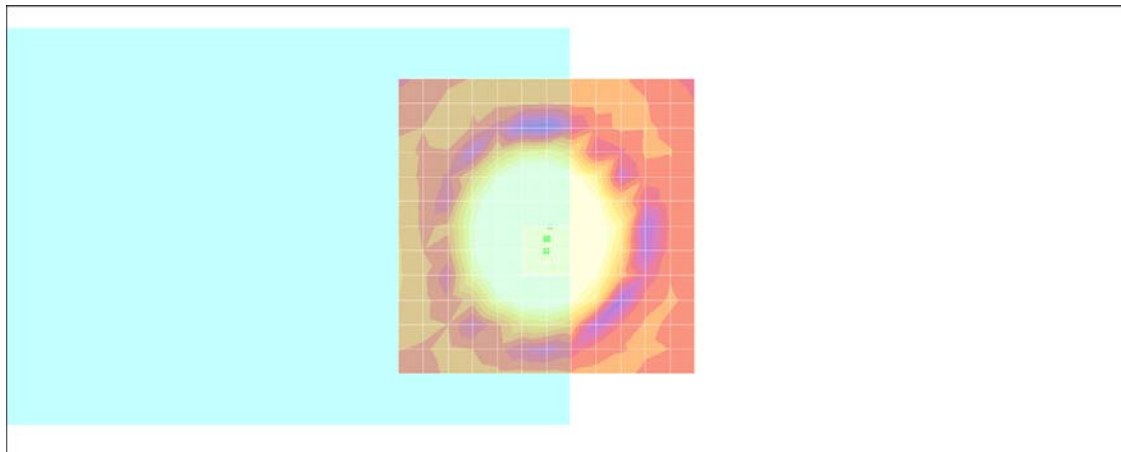
- Probe: AM1DV2 - 1038; ; Calibrated: 2010/1/21
- Sensor-Surface: 0mm (Fix Surface)
- Electronics: DAE4 Sn778; Calibrated: 2010/10/22
- Phantom: HAC Test Arch with AMCC; Type: SD HAC P01 BA;
- Measurement SW: DASY4, V4.7 Build 80; Postprocessing SW: SEMCAD, V1.8 Build 186

**Scans/z (axial) fine 2mm 8 x 8/ABM SNR(x,y,z) (5x5x1):**

ABM1/ABM2 = 46.4 dB

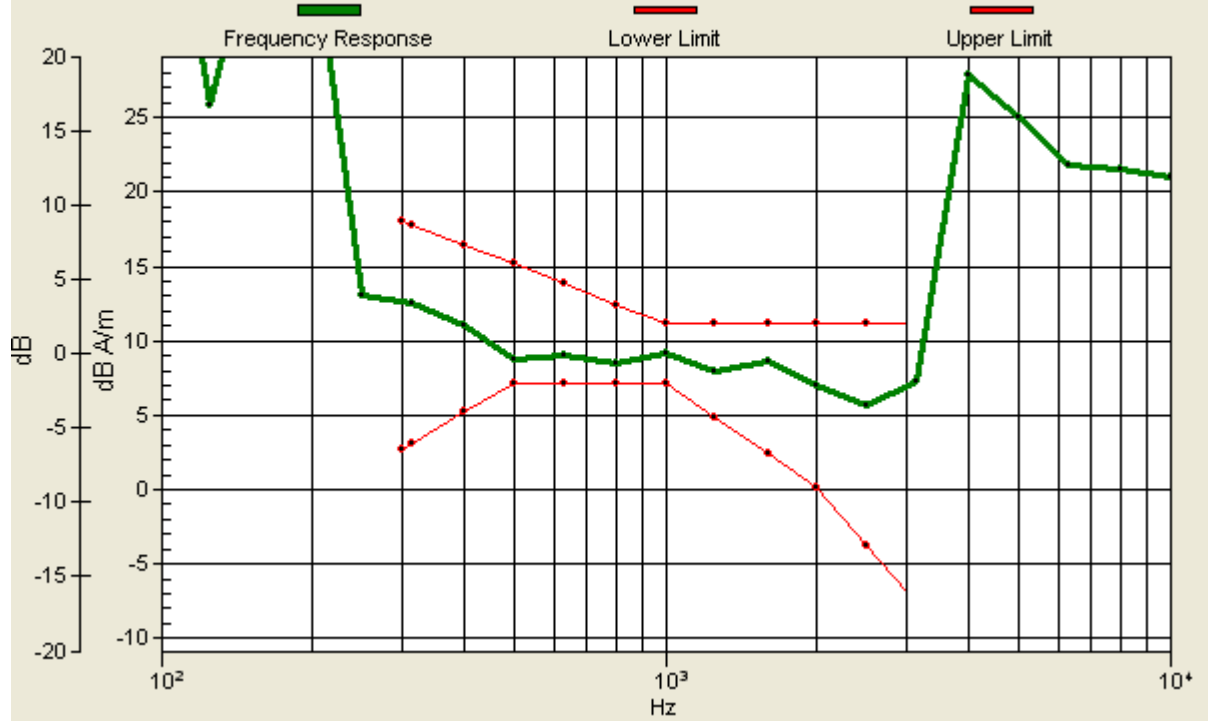
ABM1 comp = 13.0 dB A/m

Location: 0, 2.2, 3.7 mm



# Scans/z (axial) wideband at best S/N/ABM Freq Resp(x,y,z,f)

Loc: 0, 2.2, 3.7 mm Diff: 1.29dB



## #05 T-Coil\_CDMA2000 BC1\_RC1+SO3\_Ch600\_Battery 1\_Radial 1 (X)

**DUT: 001550**

Communication System: CDMA ; Frequency: 1880 MHz;Duty Cycle: 1:1

Medium: Air Medium parameters used:  $\sigma = 0$  mho/m,  $\epsilon_r = 1$ ;  $\rho = 1$  kg/m<sup>3</sup>

Ambient Temperature : 22.4 °C

DASY4 Configuration:

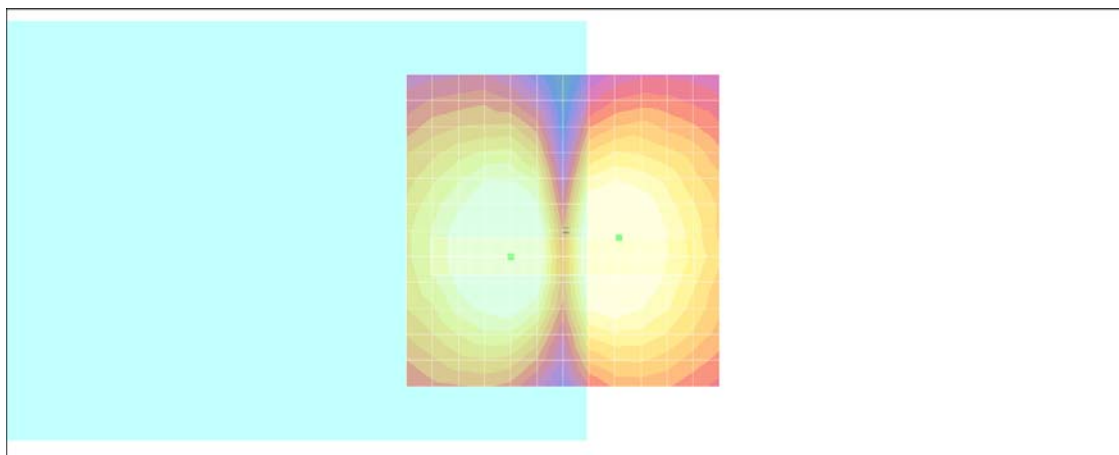
- Probe: AM1DV2 - 1038; ; Calibrated: 2010/1/21
- Sensor-Surface: 0mm (Fix Surface)
- Electronics: DAE4 Sn778; Calibrated: 2010/10/22
- Phantom: HAC Test Arch with AMCC; Type: SD HAC P01 BA;
- Measurement SW: DASY4, V4.7 Build 80; Postprocessing SW: SEMCAD, V1.8 Build 186

**Scans/x (longitudinal) fine 3mm 42 x 6/ABM SNR(x,y,z) (15x3x1):**

ABM1/ABM2 = 31.7 dB

ABM1 comp = 3.77 dB A/m

Location: -9, 1.2, 3.7 mm



0 dB = 1.00A/m

## #05 T-Coil\_CDMA2000 BC1\_RC1+SO3\_Ch600\_Battery 1\_Radial 2 (Y)

**DUT: 001550**

Communication System: CDMA ; Frequency: 1880 MHz;Duty Cycle: 1:1

Medium: Air Medium parameters used:  $\sigma = 0$  mho/m,  $\epsilon_r = 1$ ;  $\rho = 1$  kg/m<sup>3</sup>

Ambient Temperature : 22.4 °C

DASY4 Configuration:

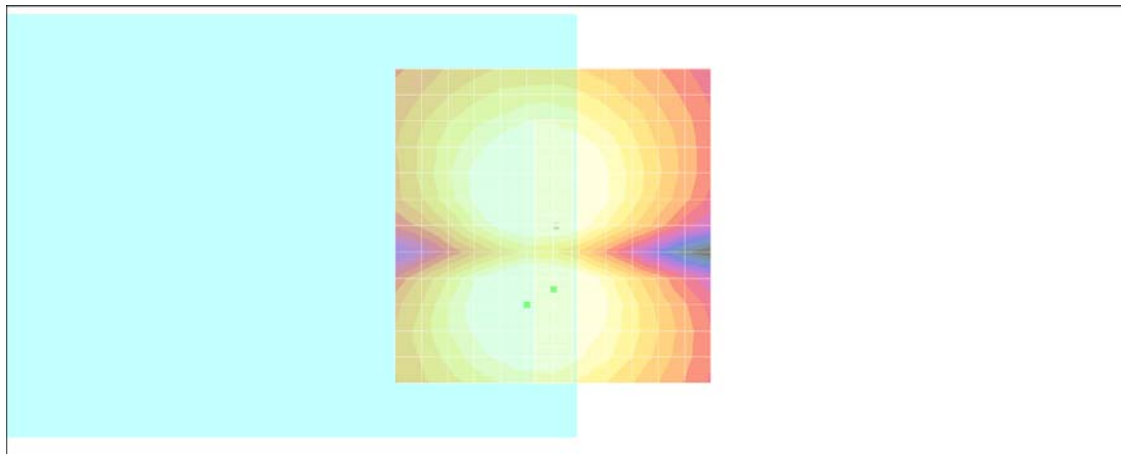
- Probe: AM1DV2 - 1038; ; Calibrated: 2010/1/21
- Sensor-Surface: 0mm (Fix Surface)
- Electronics: DAE4 Sn778; Calibrated: 2010/10/22
- Phantom: HAC Test Arch with AMCC; Type: SD HAC P01 BA;
- Measurement SW: DASY4, V4.7 Build 80; Postprocessing SW: SEMCAD, V1.8 Build 186

**Scans/y (transversal) fine 3mm 6 x 42/ABM SNR(x,y,z) (3x15x1):**

ABM1/ABM2 = 49.2 dB

ABM1 comp = 5.45 dB A/m

Location: 0, 10.2, 3.7 mm



0 dB = 1.00A/m

## #06 T-Coil\_CDMA2000 BC1\_RC1+SO3\_Ch25\_Battery 1\_Axial (Z)

**DUT: 001550**

Communication System: CDMA ; Frequency: 1851.25 MHz;Duty Cycle: 1:1

Medium: Air Medium parameters used:  $\sigma = 0$  mho/m,  $\epsilon_r = 1$ ;  $\rho = 1$  kg/m<sup>3</sup>

Ambient Temperature : 22.4 °C

DASY4 Configuration:

- Probe: AM1DV2 - 1038; ; Calibrated: 2010/1/21
- Sensor-Surface: 0mm (Fix Surface)
- Electronics: DAE4 Sn778; Calibrated: 2010/10/22
- Phantom: HAC Test Arch with AMCC; Type: SD HAC P01 BA;
- Measurement SW: DASY4, V4.7 Build 80; Postprocessing SW: SEMCAD, V1.8 Build 186

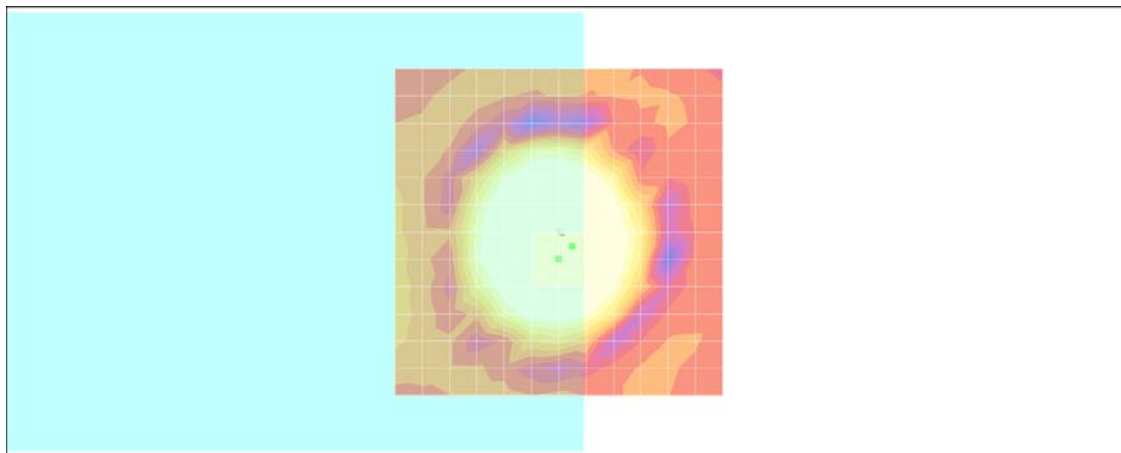
**Scans/z (axial) fine 2mm 8 x 8/ABM SNR(x,y,z) (5x5x1):**

**Cursor:**

ABM1/ABM2 = 44.6 dB

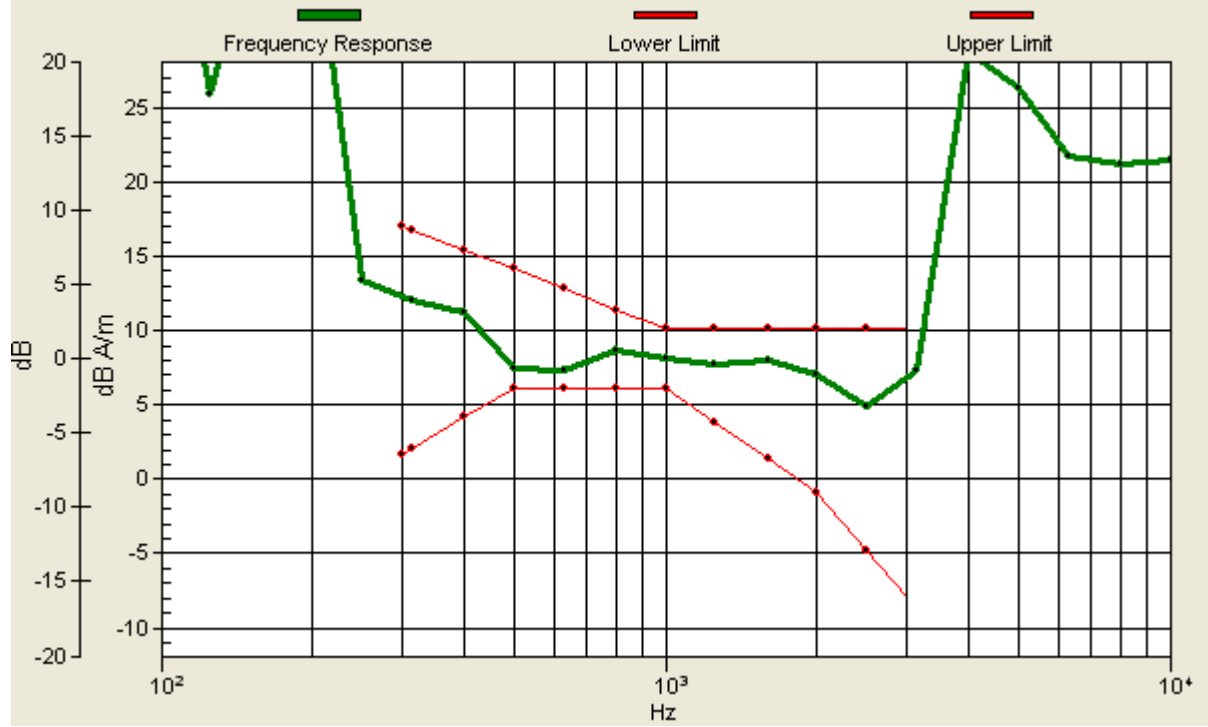
ABM1 comp = 12.9 dB A/m

Location: -2, 2.2, 3.7 mm



# Scans/z (axial) wideband at best S/N/ABM Freq Resp(x,y,z,f)

Loc: -2, 2.2, 3.7 mm Diff: 1.21dB



## #06 T-Coil\_CDMA2000 BC1\_RC1+SO3\_Ch25\_Battery 1\_Radial 1 (X)

**DUT: 001550**

Communication System: CDMA ; Frequency: 1851.25 MHz;Duty Cycle: 1:1

Medium: Air Medium parameters used:  $\sigma = 0$  mho/m,  $\epsilon_r = 1$ ;  $\rho = 1$  kg/m<sup>3</sup>

Ambient Temperature : 22.4 °C

DASY4 Configuration:

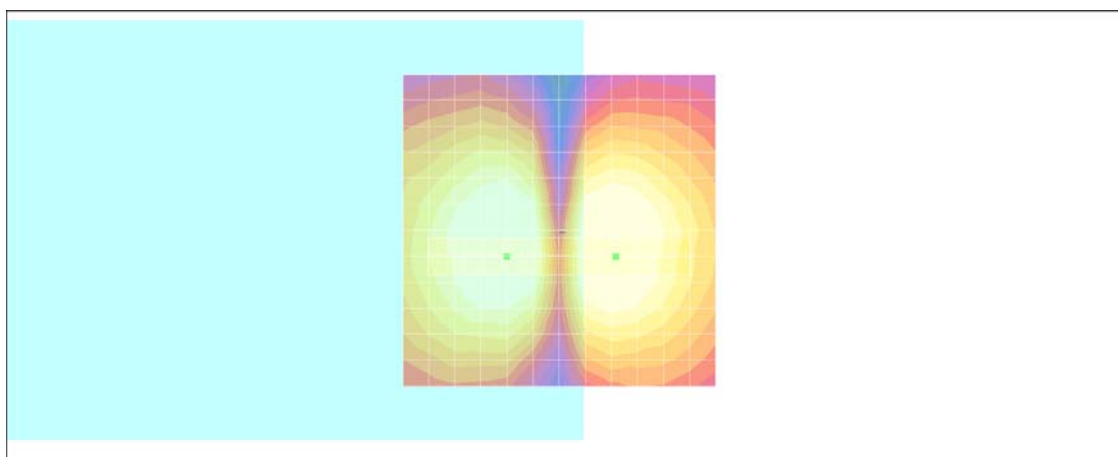
- Probe: AM1DV2 - 1038; ; Calibrated: 2010/1/21
- Sensor-Surface: 0mm (Fix Surface)
- Electronics: DAE4 Sn778; Calibrated: 2010/10/22
- Phantom: HAC Test Arch with AMCC; Type: SD HAC P01 BA;
- Measurement SW: DASY4, V4.7 Build 80; Postprocessing SW: SEMCAD, V1.8 Build 186

**Scans/x (longitudinal) fine 3mm 42 x 6/ABM SNR(x,y,z) (15x3x1):**

ABM1/ABM2 = 29.1 dB

ABM1 comp = 3.28 dB A/m

Location: -9, 4.2, 3.7 mm



0 dB = 1.00A/m

## #06 T-Coil\_CDMA2000 BC1\_RC1+SO3\_Ch25\_Battery 1\_Radial 2 (Y)

**DUT: 001550**

Communication System: CDMA ; Frequency: 1851.25 MHz;Duty Cycle: 1:1

Medium: Air Medium parameters used:  $\sigma = 0$  mho/m,  $\epsilon_r = 1$ ;  $\rho = 1$  kg/m<sup>3</sup>

Ambient Temperature : 22.4 °C

DASY4 Configuration:

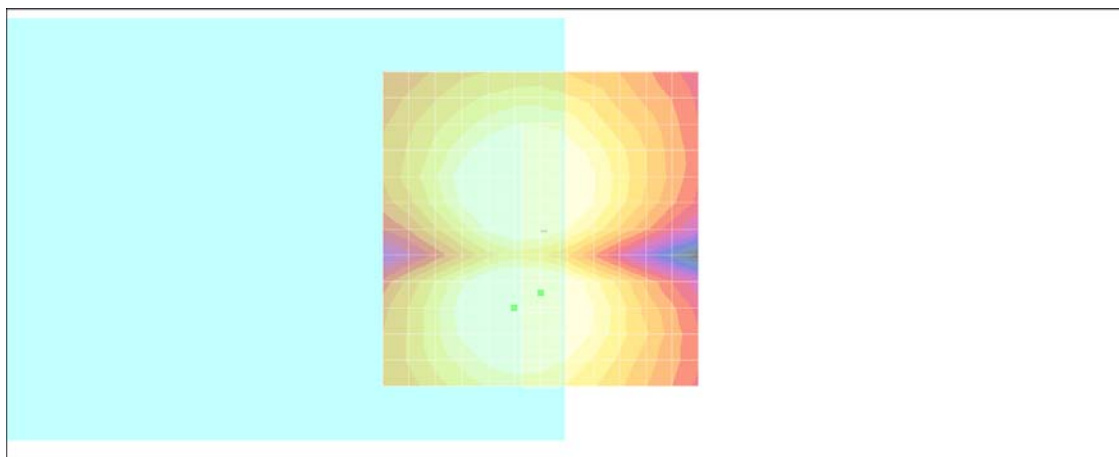
- Probe: AM1DV2 - 1038; ; Calibrated: 2010/1/21
- Sensor-Surface: 0mm (Fix Surface)
- Electronics: DAE4 Sn778; Calibrated: 2010/10/22
- Phantom: HAC Test Arch with AMCC; Type: SD HAC P01 BA;
- Measurement SW: DASY4, V4.7 Build 80; Postprocessing SW: SEMCAD, V1.8 Build 186

**Scans/y (transversal) fine 3mm 6 x 42/ABM SNR(x,y,z) (3x15x1):**

ABM1/ABM2 = 48.7 dB

ABM1 comp = 5.37 dB A/m

Location: 0, 10.2, 3.7 mm



0 dB = 1.00A/m



## #07 T-Coil\_CDMA2000 BC1\_RC1+SO3\_Ch1175\_Battery 1\_Axial (Z)

**DUT: 001550**

Communication System: CDMA ; Frequency: 1908.75 MHz;Duty Cycle: 1:1

Medium: Air Medium parameters used:  $\sigma = 0$  mho/m,  $\epsilon_r = 1$ ;  $\rho = 1$  kg/m<sup>3</sup>

Ambient Temperature : 22.4 °C

DASY4 Configuration:

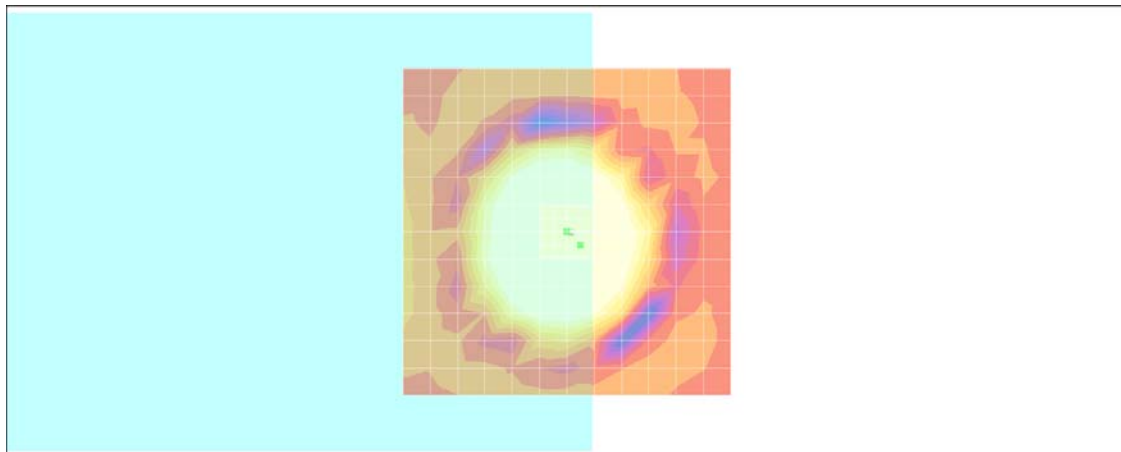
- Probe: AM1DV2 - 1038; ; Calibrated: 2010/1/21
- Sensor-Surface: 0mm (Fix Surface)
- Electronics: DAE4 Sn778; Calibrated: 2010/10/22
- Phantom: HAC Test Arch with AMCC; Type: SD HAC P01 BA;
- Measurement SW: DASY4, V4.7 Build 80; Postprocessing SW: SEMCAD, V1.8 Build 186

**Scans/z (axial) fine 2mm 8 x 8/ABM SNR(x,y,z) (5x5x1):**

ABM1/ABM2 = 46.2 dB

ABM1 comp = 12.9 dB A/m

Location: -2, 2, 3.7 mm



# Scans/z (axial) wideband at best S/N/ABM Freq Resp(x,y,z,f)

Loc: -2, 2, 3.7 mm Diff: 1.53dB



### #07 T-Coil\_CDMA2000 BC1\_RC1+SO3\_Ch1175\_Battery 1\_Radial 1 (X)

**DUT: 001550**

Communication System: CDMA ; Frequency: 1908.75 MHz;Duty Cycle: 1:1

Medium: Air Medium parameters used:  $\sigma = 0$  mho/m,  $\epsilon_r = 1$ ;  $\rho = 1$  kg/m<sup>3</sup>

Ambient Temperature : 22.4 °C

DASY4 Configuration:

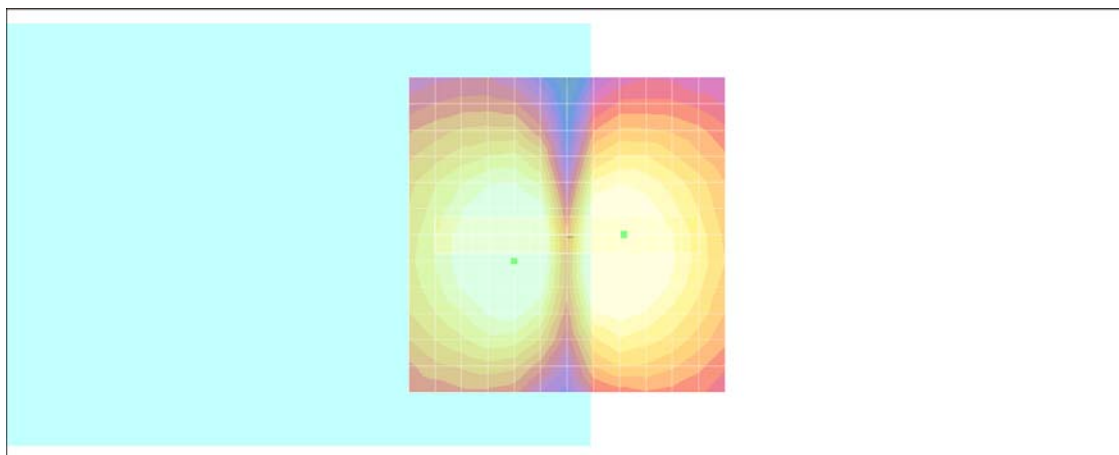
- Probe: AM1DV2 - 1038; ; Calibrated: 2010/1/21
- Sensor-Surface: 0mm (Fix Surface)
- Electronics: DAE4 Sn778; Calibrated: 2010/10/22
- Phantom: HAC Test Arch with AMCC; Type: SD HAC P01 BA;
- Measurement SW: DASY4, V4.7 Build 80; Postprocessing SW: SEMCAD, V1.8 Build 186

#### Scans/x (longitudinal) fine 3mm 42 x 6/ABM SNR(x,y,z) (15x3x1):

ABM1/ABM2 = 30.4 dB

ABM1 comp = 3.23 dB A/m

Location: -9, 0, 3.7 mm



0 dB = 1.00A/m

## #07 T-Coil\_CDMA2000 BC1\_RC1+SO3\_Ch1175\_Battery 1\_Radial 2 (Y)

**DUT: 001550**

Communication System: CDMA ; Frequency: 1908.75 MHz;Duty Cycle: 1:1

Medium: Air Medium parameters used:  $\sigma = 0$  mho/m,  $\epsilon_r = 1$ ;  $\rho = 1$  kg/m<sup>3</sup>

Ambient Temperature : 22.4 °C

DASY4 Configuration:

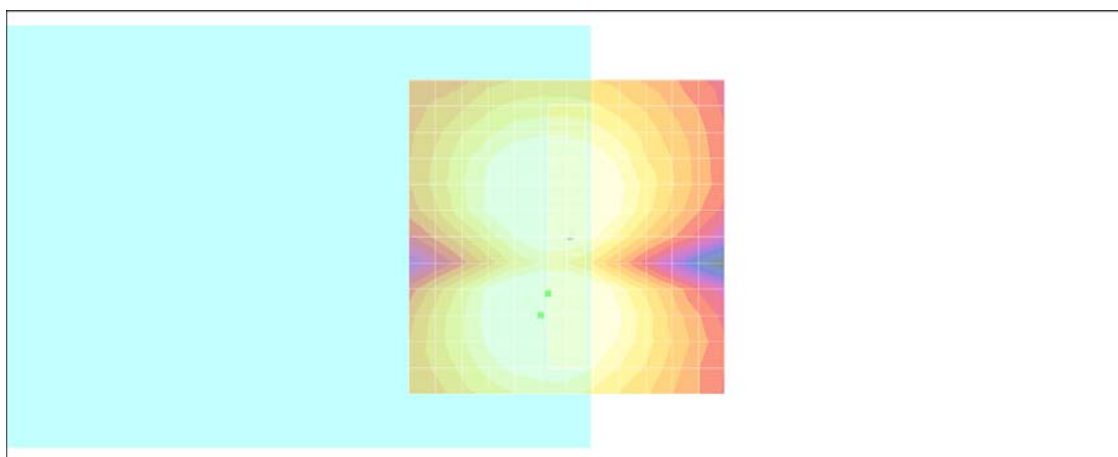
- Probe: AM1DV2 - 1038; ; Calibrated: 2010/1/21
- Sensor-Surface: 0mm (Fix Surface)
- Electronics: DAE4 Sn778; Calibrated: 2010/10/22
- Phantom: HAC Test Arch with AMCC; Type: SD HAC P01 BA;
- Measurement SW: DASY4, V4.7 Build 80; Postprocessing SW: SEMCAD, V1.8 Build 186

**Scans/y (transversal) fine 3mm 6 x 42/ABM SNR(x,y,z) (3x15x1):**

ABM1/ABM2 = 48.9 dB

ABM1 comp = 6.07 dB A/m

Location: 3, 9, 3.7 mm



0 dB = 1.00A/m

## #08 T-Coil\_CDMA2000 BC1\_RC1+SO3\_Ch1175\_Battery 2\_Axial (Z)

**DUT: 001550**

Communication System: CDMA ; Frequency: 1908.75 MHz;Duty Cycle: 1:1

Medium: Air Medium parameters used:  $\sigma = 0$  mho/m,  $\epsilon_r = 1$ ;  $\rho = 1$  kg/m<sup>3</sup>

Ambient Temperature : 22.4 °C

DASY4 Configuration:

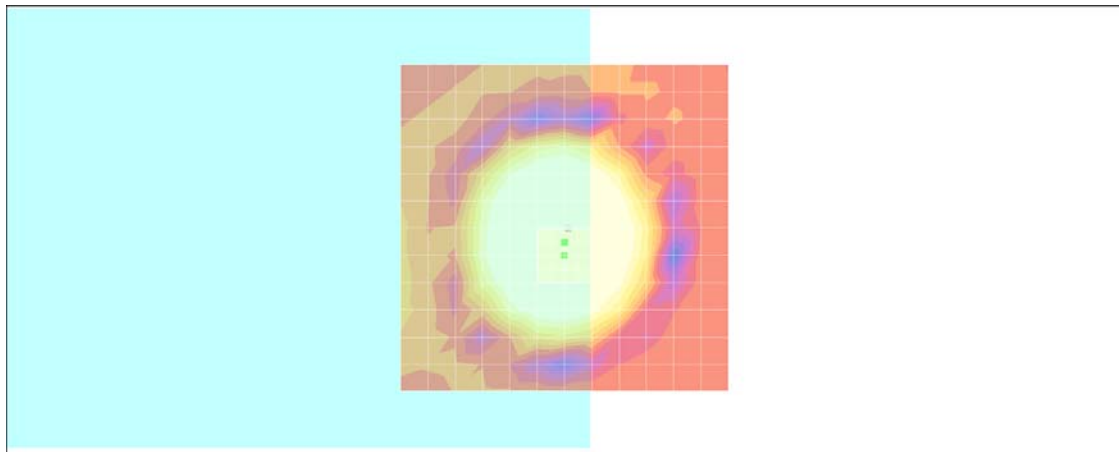
- Probe: AM1DV2 - 1038; ; Calibrated: 2010/1/21
- Sensor-Surface: 0mm (Fix Surface)
- Electronics: DAE4 Sn778; Calibrated: 2010/10/22
- Phantom: HAC Test Arch with AMCC; Type: SD HAC P01 BA;
- Measurement SW: DASY4, V4.7 Build 80; Postprocessing SW: SEMCAD, V1.8 Build 186

**Scans/z (axial) fine 2mm 8 x 8/ABM SNR(x,y,z) (5x5x1):**

ABM1/ABM2 = 45.8 dB

ABM1 comp = 13.1 dB A/m

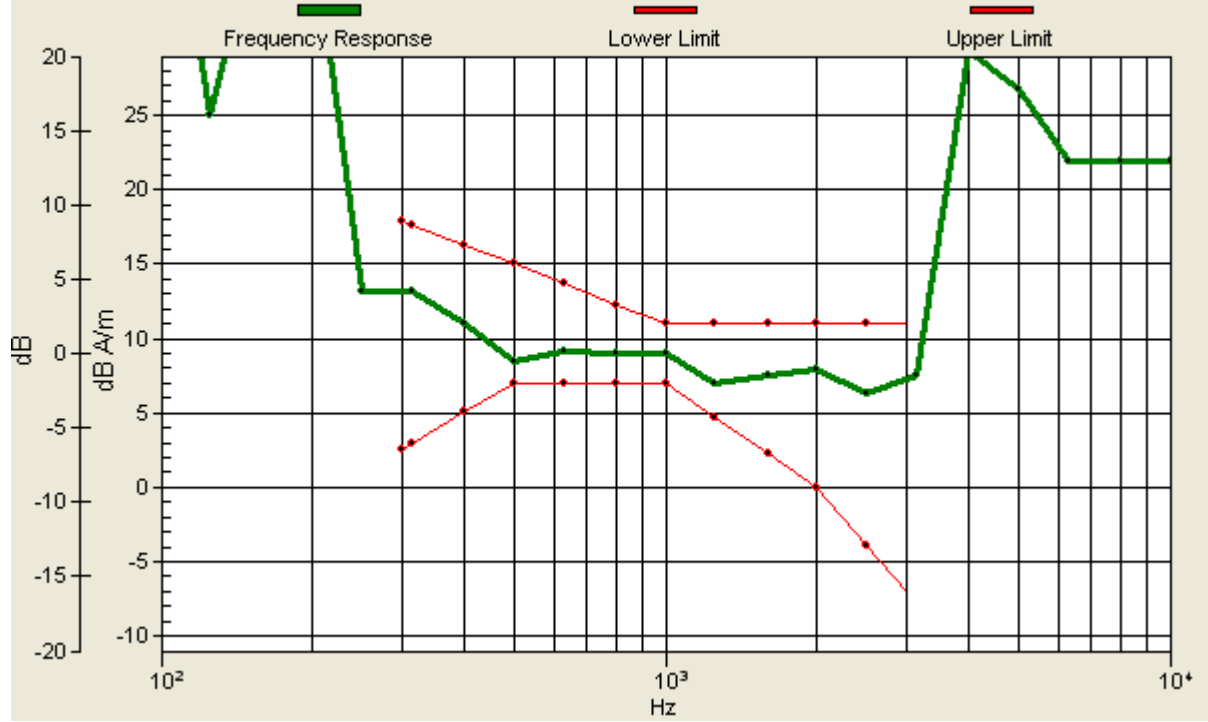
Location: 0, 2.2, 3.7 mm



0 dB = 1.00A/m

# Scans/z (axial) wideband at best S/N/ABM Freq Resp(x,y,z,f)

Loc: 0, 2.2, 3.7 mm Diff: 1.52dB



## #08 T-Coil\_CDMA2000 BC1\_RC1+SO3\_Ch1175\_Battery 2\_Radial 1 (X)

**DUT: 001550**

Communication System: CDMA ; Frequency: 1908.75 MHz;Duty Cycle: 1:1

Medium: Air Medium parameters used:  $\sigma = 0$  mho/m,  $\epsilon_r = 1$ ;  $\rho = 1$  kg/m<sup>3</sup>

Ambient Temperature : 22.4 °C

DASY4 Configuration:

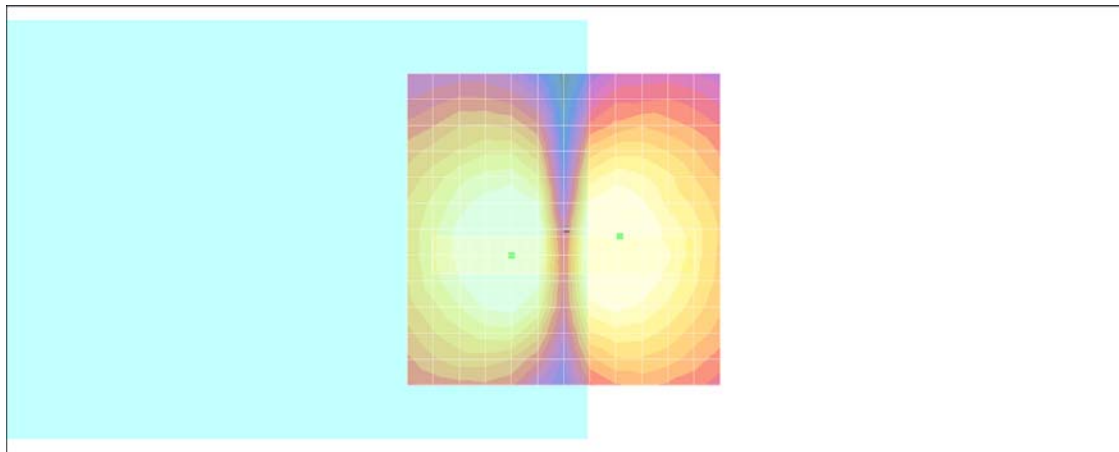
- Probe: AM1DV2 - 1038; ; Calibrated: 2010/1/21
- Sensor-Surface: 0mm (Fix Surface)
- Electronics: DAE4 Sn778; Calibrated: 2010/10/22
- Phantom: HAC Test Arch with AMCC; Type: SD HAC P01 BA;
- Measurement SW: DASY4, V4.7 Build 80; Postprocessing SW: SEMCAD, V1.8 Build 186

**Scans/x (longitudinal) fine 3mm 42 x 6/ABM SNR(x,y,z) (15x3x1):**

ABM1/ABM2 = 30.4 dB

ABM1 comp = 2.93 dB A/m

Location: -9, 1.2, 3.7 mm



0 dB = 1.00A/m

## #08 T-Coil\_CDMA2000 BC1\_RC1+SO3\_Ch1175\_Battery 2\_Radial 2 (Y)

**DUT: 001550**

Communication System: CDMA ; Frequency: 1908.75 MHz;Duty Cycle: 1:1

Medium: Air Medium parameters used:  $\sigma = 0$  mho/m,  $\epsilon_r = 1$ ;  $\rho = 1$  kg/m<sup>3</sup>

Ambient Temperature : 22.4 °C

DASY4 Configuration:

- Probe: AM1DV2 - 1038; ; Calibrated: 2010/1/21
- Sensor-Surface: 0mm (Fix Surface)
- Electronics: DAE4 Sn778; Calibrated: 2010/10/22
- Phantom: HAC Test Arch with AMCC; Type: SD HAC P01 BA;
- Measurement SW: DASY4, V4.7 Build 80; Postprocessing SW: SEMCAD, V1.8 Build 186

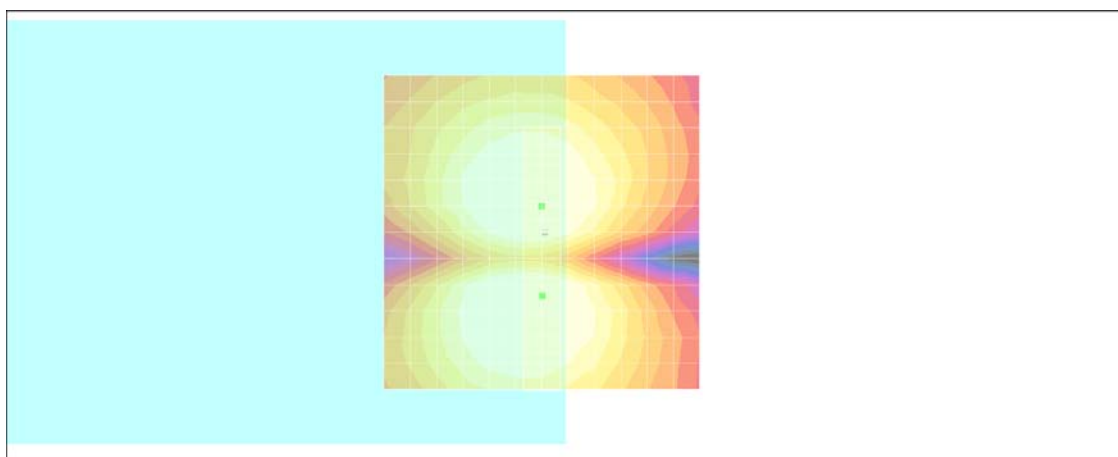
**Scans/y (transversal) fine 3mm 6 x 42/ABM SNR(x,y,z) (3x15x1):**

ABM1/ABM2 = 48.3 dB

ABM1 comp = 4.21 dB A/m

BWC Factor = 0.176005 dB

Location: 0, 10.2, 3.7 mm



0 dB = 1.00A/m