

#01 T-Coil_CDMA2000 BC0_RC1+SO3_Ch384_Battery 1_Axial (Z)

DUT: 091629

Communication System: CDMA ; Frequency: 836.52 MHz;Duty Cycle: 1:1

Medium: Air Medium parameters used: $\sigma = 0$ mho/m, $\epsilon_r = 1$; $\rho = 1$ kg/m³

Ambient Temperature : 22.6 °C

DASY4 Configuration:

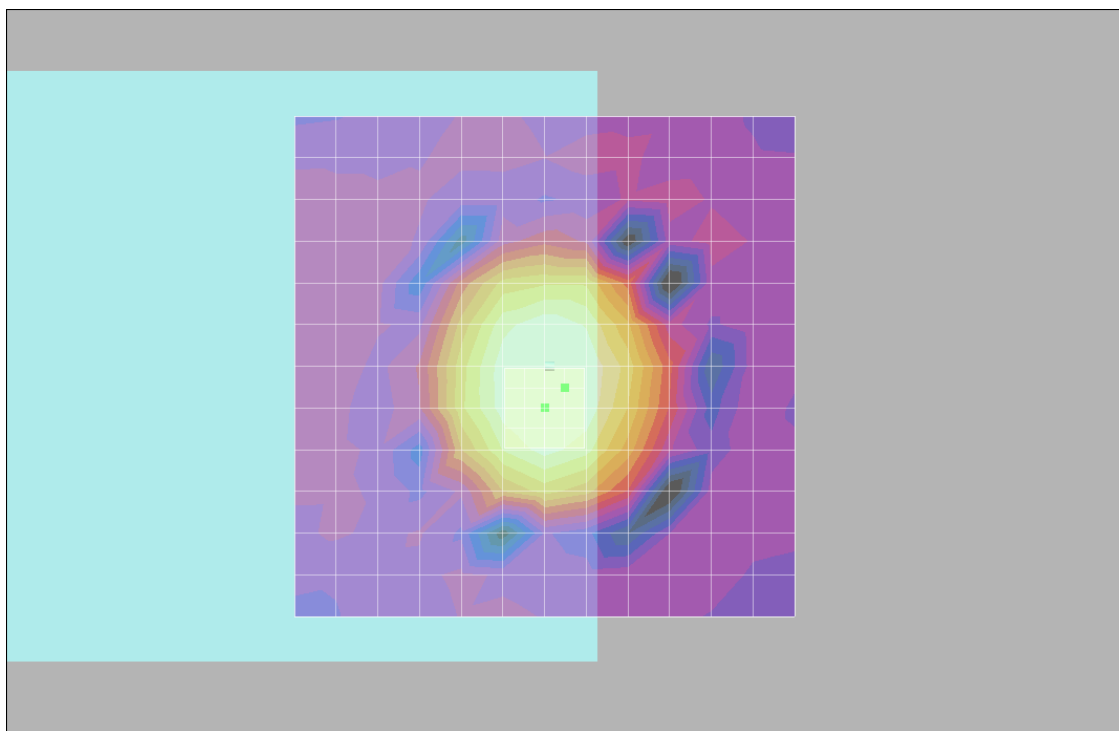
- Probe: AM1DV2 - 1038; ; Calibrated: 2010/1/21
- Sensor-Surface: 0mm (Fix Surface)
- Electronics: DAE4 Sn910; Calibrated: 2009/9/18
- Phantom: HAC Test Arch with AMCC; Type: SD HAC P01 BA;
- Measurement SW: DASY4, V4.7 Build 80; Postprocessing SW: SEMCAD, V1.8 Build 186

Scans/z (axial) fine 2mm 8 x 8/ABM SNR(x,y,z) (5x5x1):

ABM1/ABM2 = 46.9 dB

ABM1 comp = 2.88 dB A/m

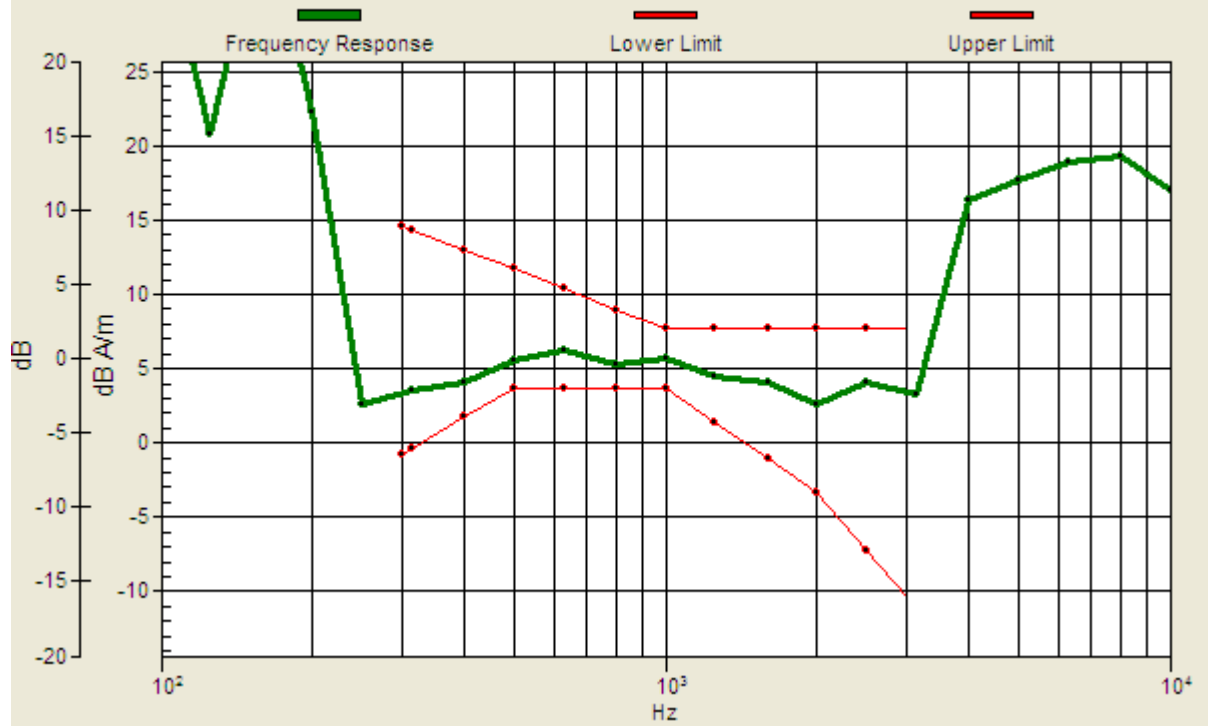
Location: -2, 2.2, 3.7 mm



0 dB = 1.00A/m

Scans/z (axial) wideband at best S/N/ABM Freq Resp(x,y,z,f)

Loc: -2, 2.2, 3.7 mm Diff: 1.53dB



#01 T-Coil_CDMA2000 BC0_RC1+SO3_Ch384_Battery 1_Radial 1 (X)

DUT: 091629

Communication System: CDMA ; Frequency: 836.52 MHz;Duty Cycle: 1:1

Medium: Air Medium parameters used: $\sigma = 0$ mho/m, $\epsilon_r = 1$; $\rho = 1$ kg/m³

Ambient Temperature : 22.6 °C

DASY4 Configuration:

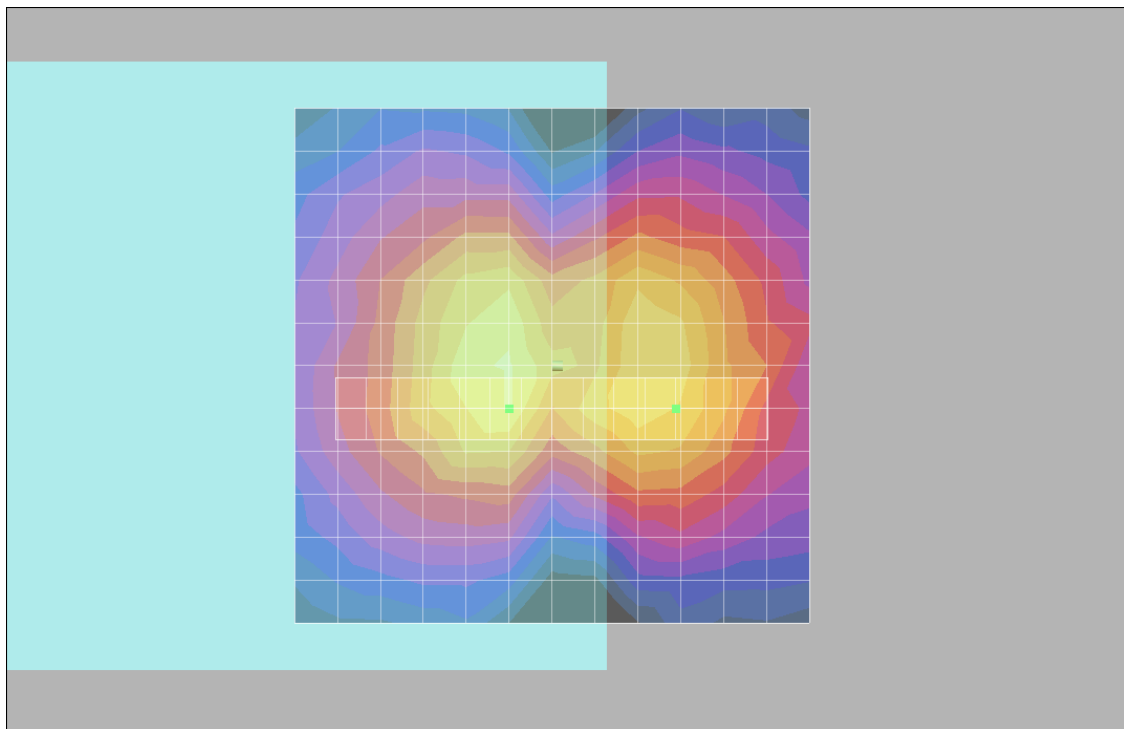
- Probe: AM1DV2 - 1038; ; Calibrated: 2010/1/21
- Sensor-Surface: 0mm (Fix Surface)
- Electronics: DAE4 Sn910; Calibrated: 2009/9/18
- Phantom: HAC Test Arch with AMCC; Type: SD HAC P01 BA;
- Measurement SW: DASY4, V4.7 Build 80; Postprocessing SW: SEMCAD, V1.8 Build 186

Scans/x (longitudinal) fine 3mm 42 x 6/ABM SNR(x,y,z) (15x3x1):

ABM1/ABM2 = 34.7 dB

ABM1 comp = -7.00 dB A/m

Location: -12, 4.2, 3.7 mm



0 dB = 1.00A/m

#01 T-Coil_CDMA2000 BC0_RC1+SO3_Ch384_Battery 1_Radial 2 (Y)

DUT: 091629

Communication System: CDMA ; Frequency: 836.52 MHz;Duty Cycle: 1:1

Medium: Air Medium parameters used: $\sigma = 0$ mho/m, $\epsilon_r = 1$; $\rho = 1$ kg/m³

Ambient Temperature : 22.6 °C

DASY4 Configuration:

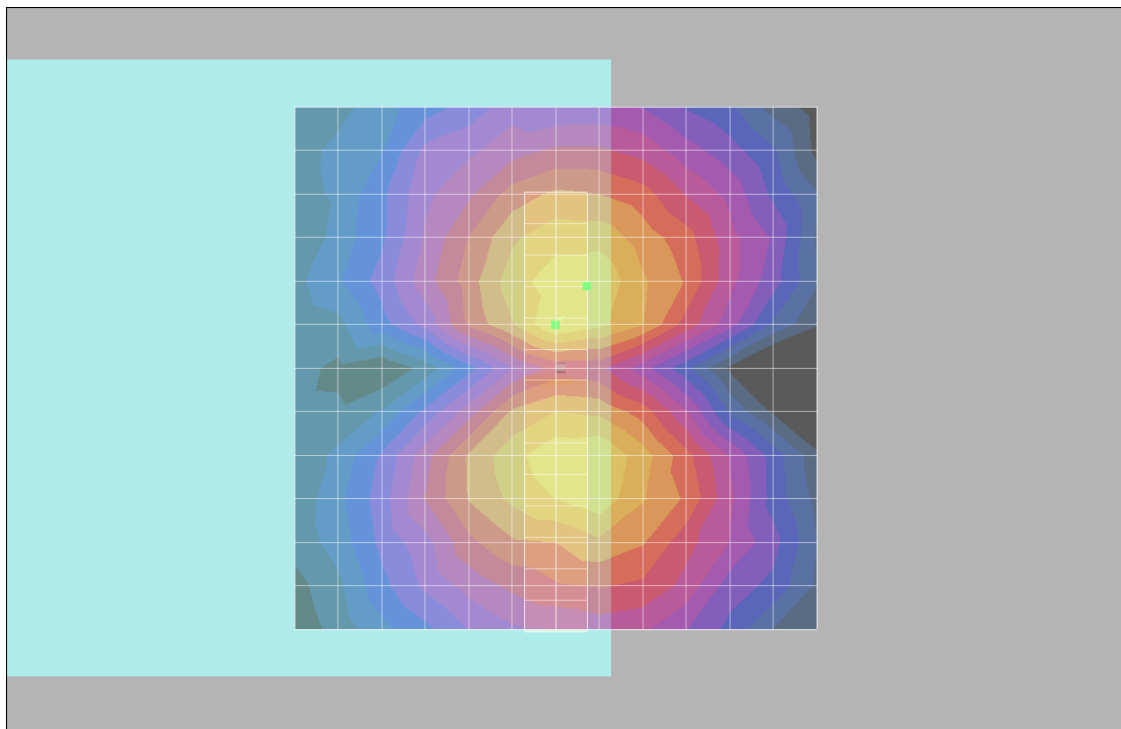
- Probe: AM1DV2 - 1038; ; Calibrated: 2010/1/21
- Sensor-Surface: 0mm (Fix Surface)
- Electronics: DAE4 Sn910; Calibrated: 2009/9/18
- Phantom: HAC Test Arch with AMCC; Type: SD HAC P01 BA;
- Measurement SW: DASY4, V4.7 Build 80; Postprocessing SW: SEMCAD, V1.8 Build 186

Scans/y (transversal) fine 3mm 6 x 42/ABM SNR(x,y,z) (3x15x1):

ABM1/ABM2 = 34.7 dB

ABM1 comp = -7.36 dB A/m

Location: -3, -7.8, 3.7 mm



0 dB = 1.00A/m

#02 T-Coil_CDMA2000 BC0_RC1+SO3_Ch1013_Battery 1_Axial (Z)

DUT: 091629

Communication System: CDMA ; Frequency: 824.7 MHz;Duty Cycle: 1:1

Medium: Air Medium parameters used: $\sigma = 0$ mho/m, $\epsilon_r = 1$; $\rho = 1$ kg/m³

Ambient Temperature : 22.6 °C

DASY4 Configuration:

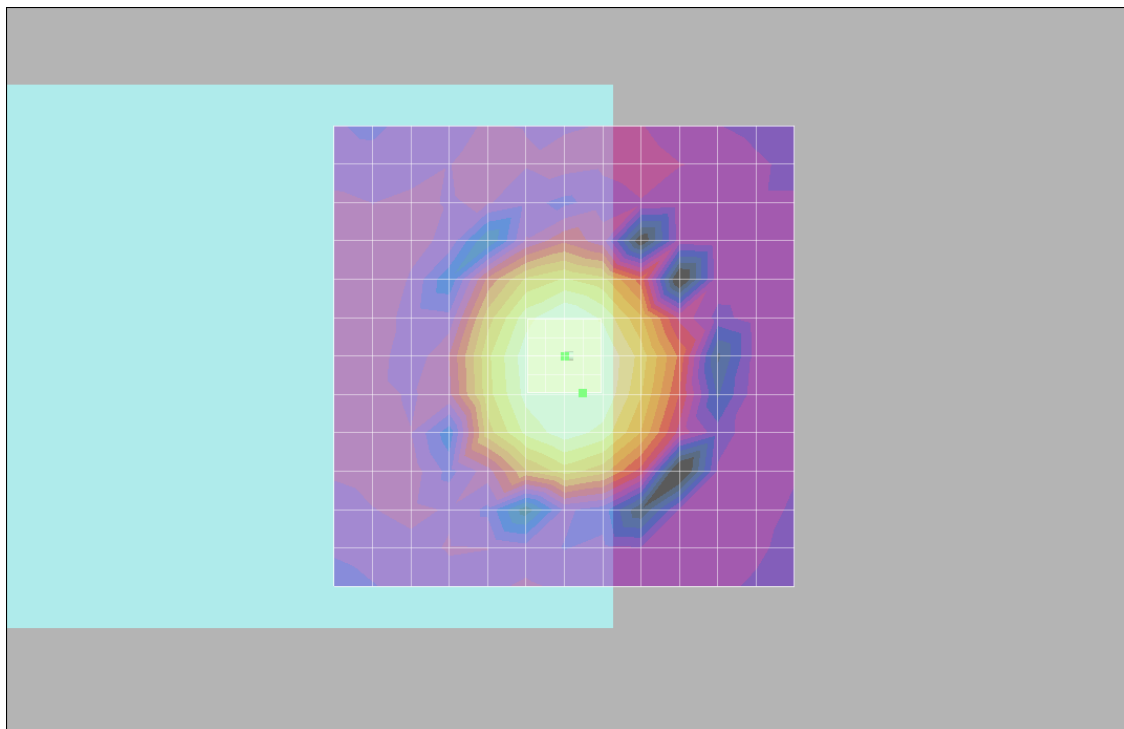
- Probe: AM1DV2 - 1038; ; Calibrated: 2010/1/21
- Sensor-Surface: 0mm (Fix Surface)
- Electronics: DAE4 Sn910; Calibrated: 2009/9/18
- Phantom: HAC Test Arch with AMCC; Type: SD HAC P01 BA;
- Measurement SW: DASY4, V4.7 Build 80; Postprocessing SW: SEMCAD, V1.8 Build 186

Scans/z (axial) fine 2mm 8 x 8/ABM SNR(x,y,z) (5x5x1):

ABM1/ABM2 = 47.1 dB

ABM1 comp = 3.10 dB A/m

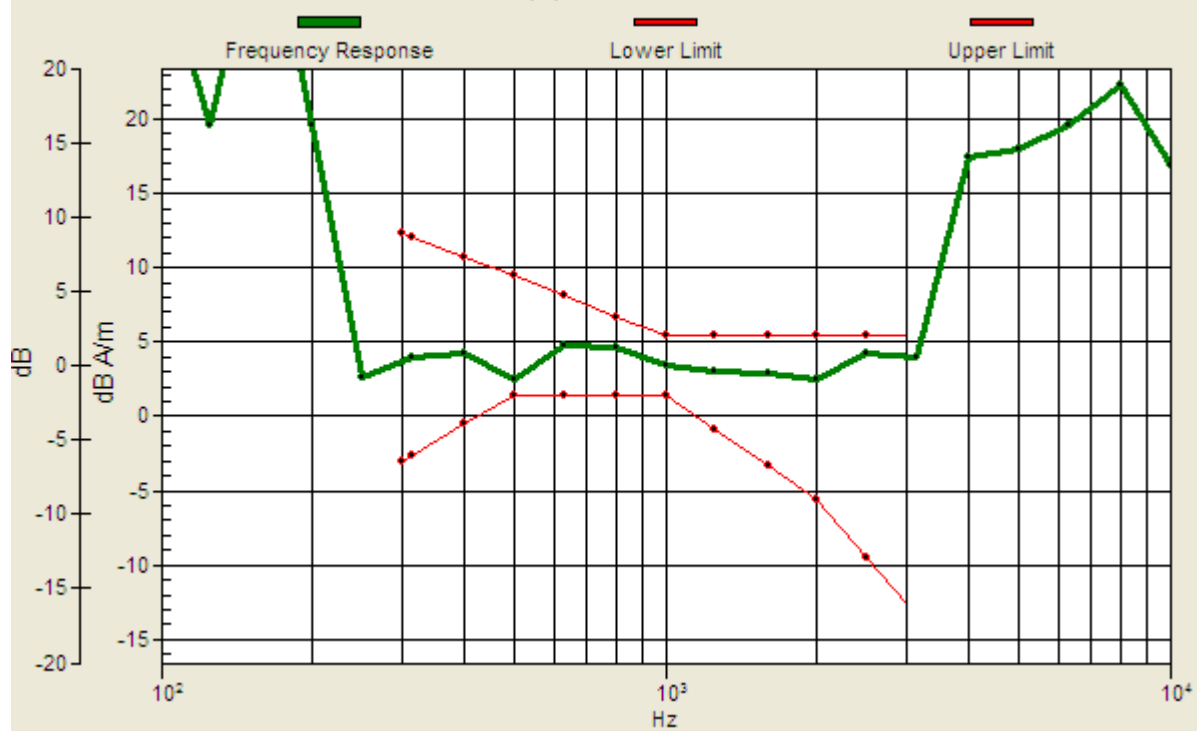
Location: -2, 4, 3.7 mm



0 dB = 1.00A/m

Scans/z (axial) wideband at best S/N/ABM Freq Resp(x,y,z,f)

Loc: -2, 4, 3.7 mm Diff: 1.01dB



#02 T-Coil_CDMA2000 BC0_RC1+SO3_Ch1013_Battery 1_Radial 1 (X)

DUT: 091629

Communication System: CDMA ; Frequency: 824.7 MHz;Duty Cycle: 1:1

Medium: Air Medium parameters used: $\sigma = 0$ mho/m, $\epsilon_r = 1$; $\rho = 1$ kg/m³

Ambient Temperature : 22.6 °C

DASY4 Configuration:

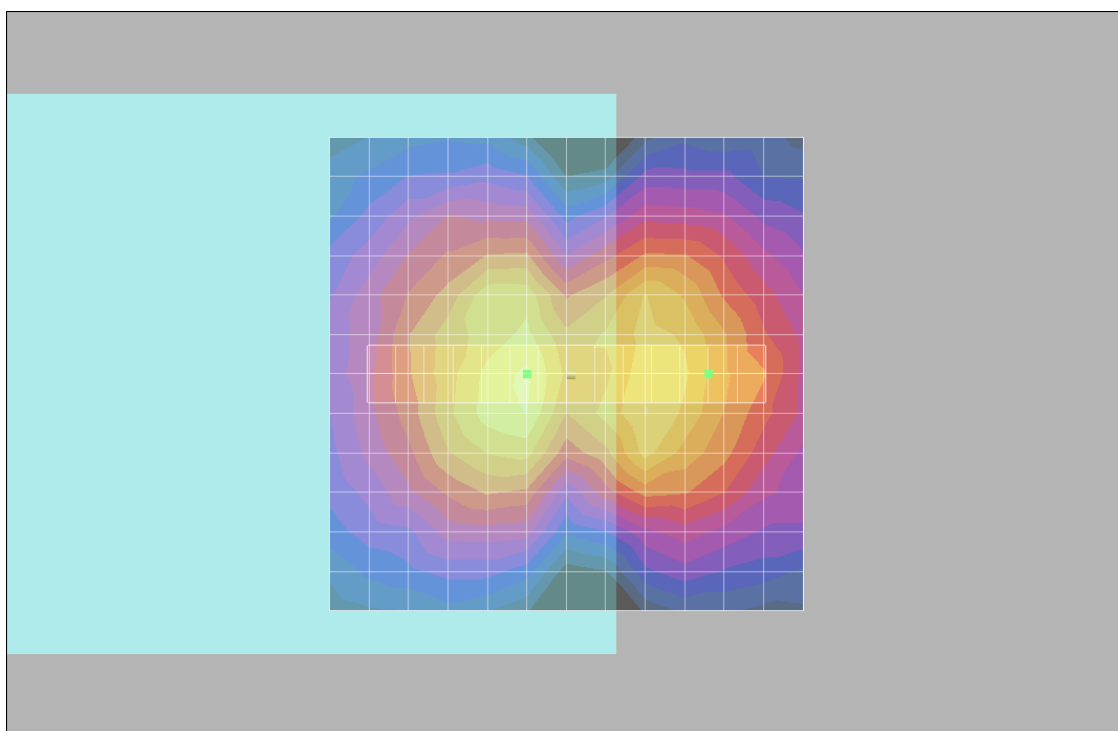
- Probe: AM1DV2 - 1038; ; Calibrated: 2010/1/21
- Sensor-Surface: 0mm (Fix Surface)
- Electronics: DAE4 Sn910; Calibrated: 2009/9/18
- Phantom: HAC Test Arch with AMCC; Type: SD HAC P01 BA;
- Measurement SW: DASY4, V4.7 Build 80; Postprocessing SW: SEMCAD, V1.8 Build 186

Scans/x (longitudinal) fine 3mm 42 x 6/ABM SNR(x,y,z) (15x3x1):

ABM1/ABM2 = 33.9 dB

ABM1 comp = -9.02 dB A/m

Location: -15, 0, 3.7 mm



0 dB = 1.00A/m

#02 T-Coil_CDMA2000 BC0_RC1+SO3_Ch1013_Battery 1_Radial 2 (Y)

DUT: 091629

Communication System: CDMA ; Frequency: 824.7 MHz;Duty Cycle: 1:1

Medium: Air Medium parameters used: $\sigma = 0$ mho/m, $\epsilon_r = 1$; $\rho = 1$ kg/m³

Ambient Temperature : 22.6 °C

DASY4 Configuration:

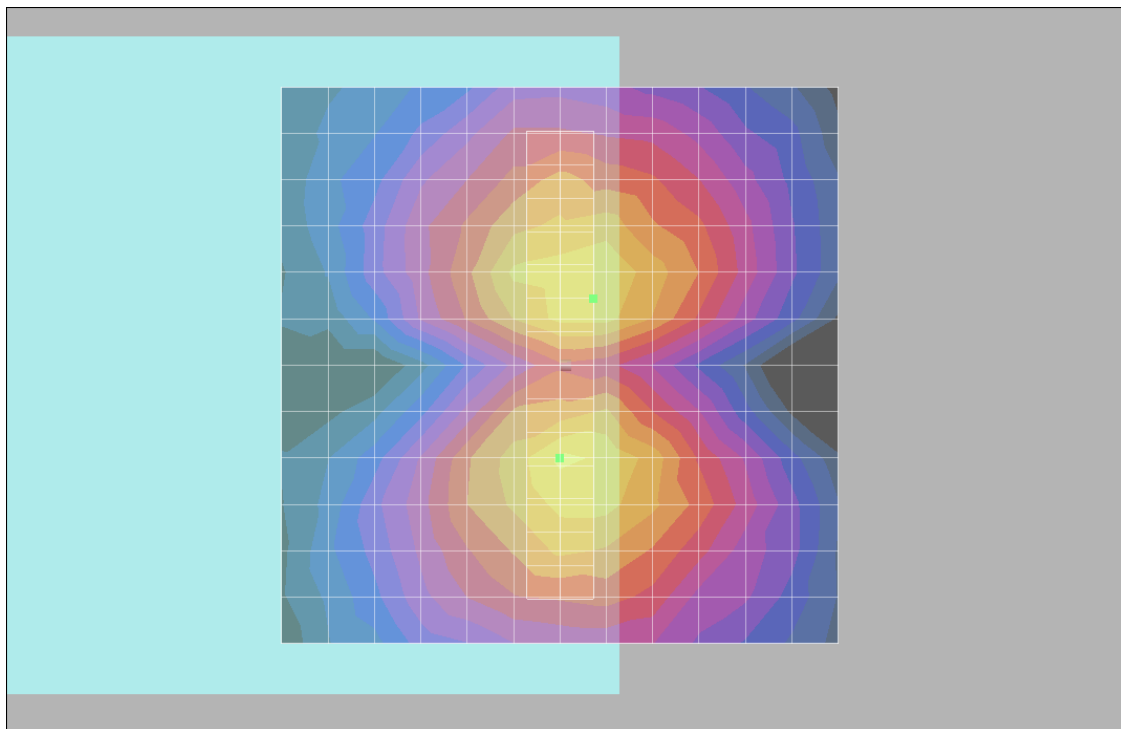
- Probe: AM1DV2 - 1038; ; Calibrated: 2010/1/21
- Sensor-Surface: 0mm (Fix Surface)
- Electronics: DAE4 Sn910; Calibrated: 2009/9/18
- Phantom: HAC Test Arch with AMCC; Type: SD HAC P01 BA;
- Measurement SW: DASY4, V4.7 Build 80; Postprocessing SW: SEMCAD, V1.8 Build 186

Scans/y (transversal) fine 3mm 6 x 42/ABM SNR(x,y,z) (3x15x1):

ABM1/ABM2 = 33.7 dB

ABM1 comp = -7.95 dB A/m

Location: -3, -6, 3.7 mm



0 dB = 1.00A/m

#03 T-Coil_CDMA2000 BC0_RC1+SO3_Ch777_Battery 1_Axial (Z)

DUT: 091629

Communication System: CDMA ; Frequency: 848.31 MHz;Duty Cycle: 1:1

Medium: Air Medium parameters used: $\sigma = 0$ mho/m, $\epsilon_r = 1$; $\rho = 1$ kg/m³

Ambient Temperature : 22.6 °C

DASY4 Configuration:

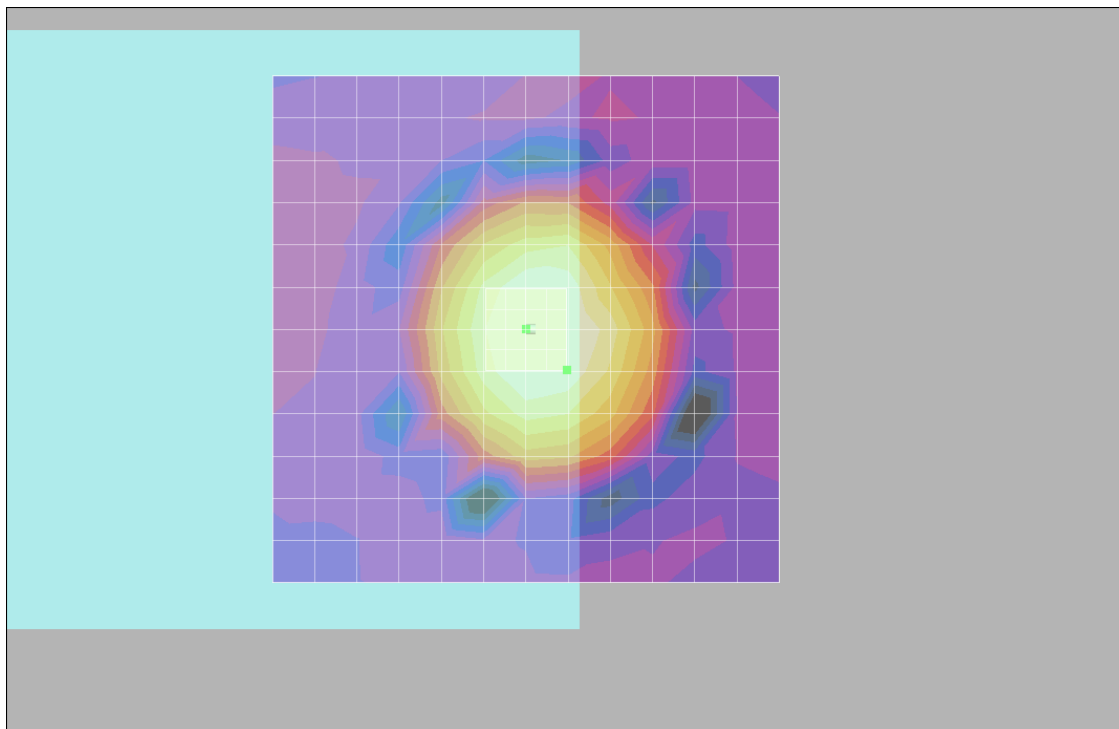
- Probe: AM1DV2 - 1038; ; Calibrated: 2010/1/21
- Sensor-Surface: 0mm (Fix Surface)
- Electronics: DAE3 Sn577; Calibrated: 2010/8/18
- Phantom: HAC Test Arch with AMCC; Type: SD HAC P01 BA;
- Measurement SW: DASY4, V4.7 Build 80; Postprocessing SW: SEMCAD, V1.8 Build 186

Scans/z (axial) fine 2mm 8 x 8/ABM SNR(x,y,z) (5x5x1):

ABM1/ABM2 = 42.7 dB

ABM1 comp = -0.442 dB A/m

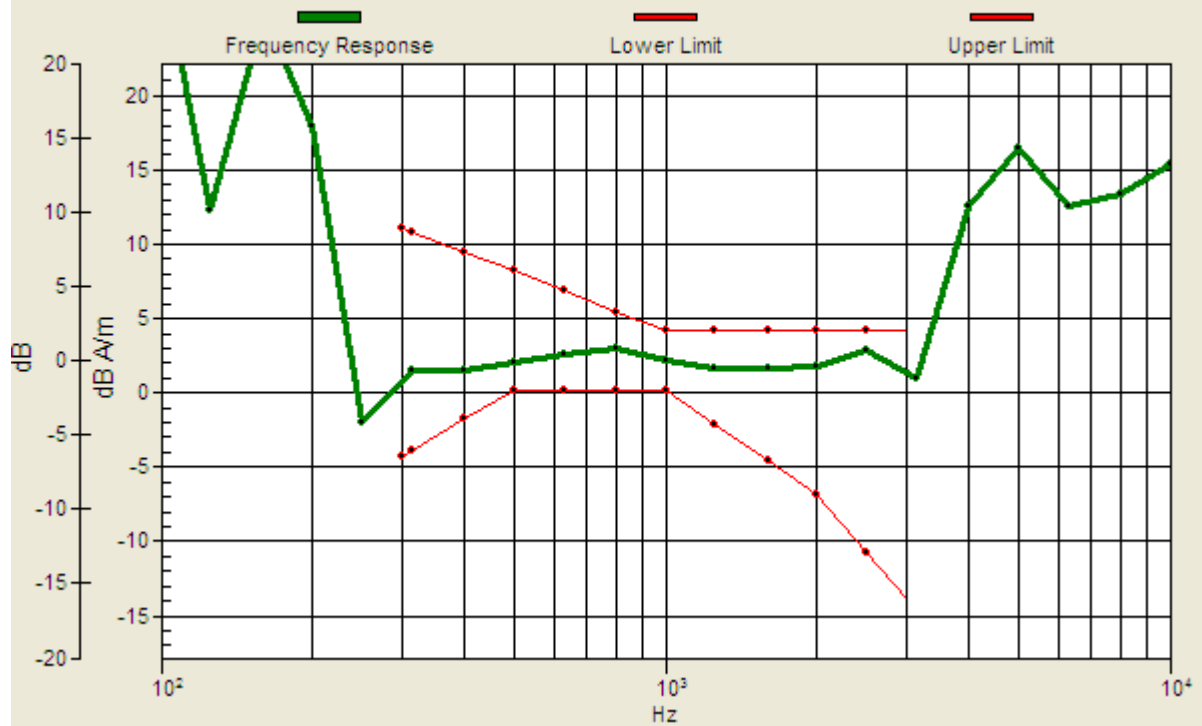
Location: -4, 4, 3.7 mm



0 dB = 1.00A/m

Scans/z (axial) wideband at best S/N/ABM Freq Resp(x,y,z,f)

Loc: -4, 4, 3.7 mm Diff: 1.33dB



#03 T-Coil_CDMA2000 BC0_RC1+SO3_Ch777_Battery 1_Radial 1 (X)

DUT: 091629

Communication System: CDMA ; Frequency: 848.31 MHz;Duty Cycle: 1:1

Medium: Air Medium parameters used: $\sigma = 0$ mho/m, $\epsilon_r = 1$; $\rho = 1$ kg/m³

Ambient Temperature : 22.5 °C

DASY4 Configuration:

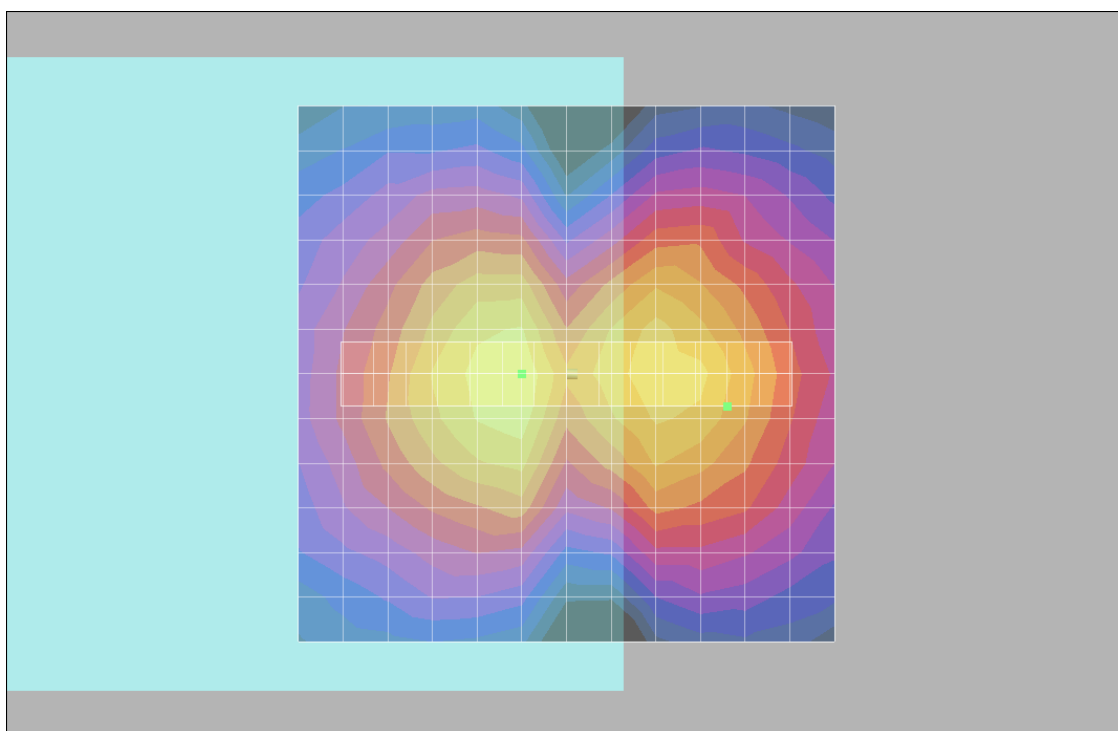
- Probe: AM1DV2 - 1038; ; Calibrated: 2010/1/21
- Sensor-Surface: 0mm (Fix Surface)
- Electronics: DAE3 Sn577; Calibrated: 2010/8/18
- Phantom: HAC Test Arch with AMCC; Type: SD HAC P01 BA;
- Measurement SW: DASY4, V4.7 Build 80; Postprocessing SW: SEMCAD, V1.8 Build 186

Scans/x (longitudinal) fine 3mm 42 x 6/ABM SNR(x,y,z) (15x3x1):

ABM1/ABM2 = 34.0 dB

ABM1 comp = -9.67 dB A/m

Location: -15, 3, 3.7 mm



0 dB = 1.00A/m

#03 T-Coil_CDMA2000 BC0_RC1+SO3_Ch777_Battery 1_Radial 2 (Y)

DUT: 091629

Communication System: CDMA ; Frequency: 848.31 MHz;Duty Cycle: 1:1

Medium: Air Medium parameters used: $\sigma = 0$ mho/m, $\epsilon_r = 1$; $\rho = 1$ kg/m³

Ambient Temperature : 22.6 °C

DASY4 Configuration:

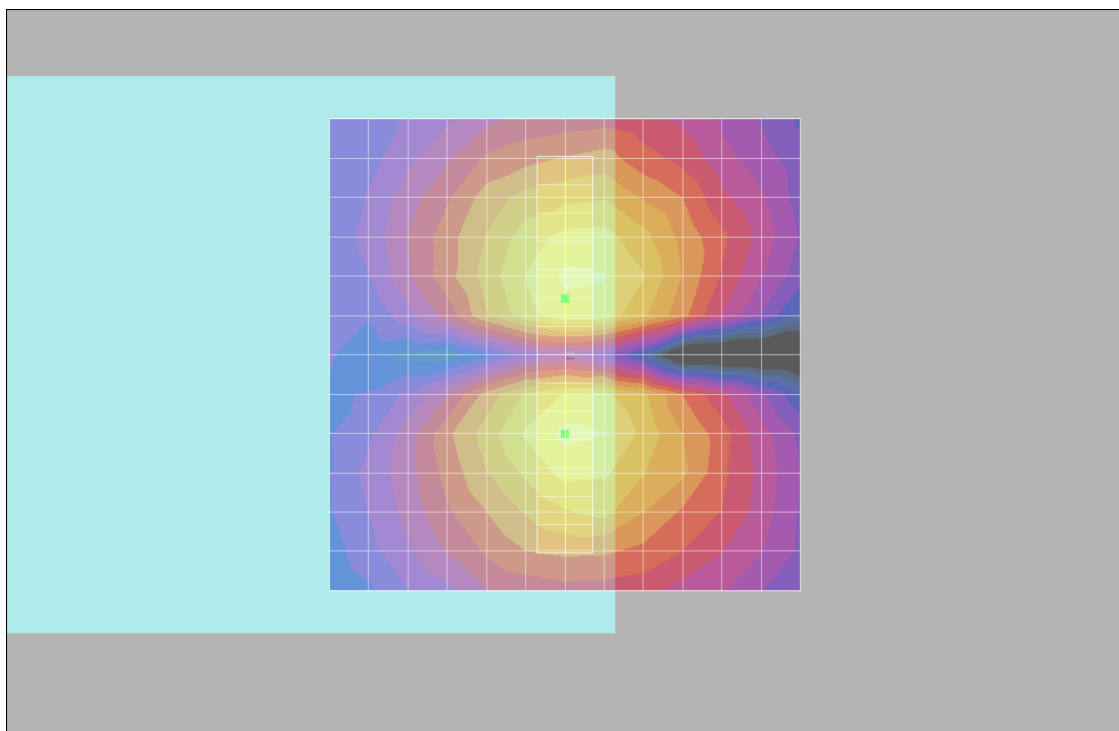
- Probe: AM1DV2 - 1038; ; Calibrated: 2010/1/21
- Sensor-Surface: 0mm (Fix Surface)
- Electronics: DAE3 Sn577; Calibrated: 2010/8/18
- Phantom: HAC Test Arch with AMCC; Type: SD HAC P01 BA;
- Measurement SW: DASY4, V4.7 Build 80; Postprocessing SW: SEMCAD, V1.8 Build 186

Scans/y (transversal) fine 3mm 6 x 42/ABM SNR(x,y,z) (3x15x1):

ABM1/ABM2 = 36.1 dB

ABM1 comp = -4.70 dB A/m

Location: 0, -6, 3.7 mm



0 dB = 1.00A/m

#04 T-Coil_CDMA2000 BC0_RC1+SO3_Ch1013_Battery 2_Axial (Z)

DUT: 091629

Communication System: CDMA ; Frequency: 824.7 MHz;Duty Cycle: 1:1

Medium: Air Medium parameters used: $\sigma = 0$ mho/m, $\epsilon_r = 1$; $\rho = 1$ kg/m³

Ambient Temperature : 22.6 °C

DASY4 Configuration:

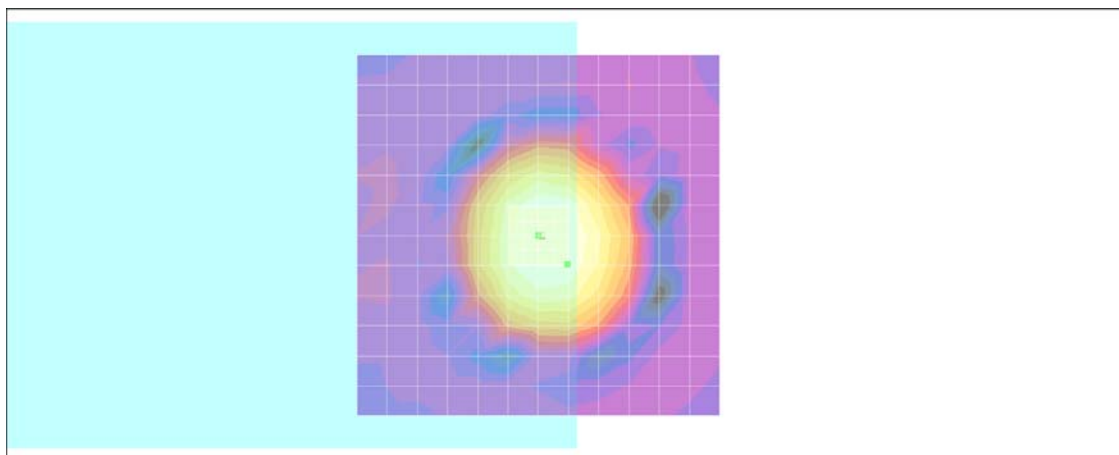
- Probe: AM1DV2 - 1038; ; Calibrated: 2010/1/21
- Sensor-Surface: 0mm (Fix Surface)
- Electronics: DAE3 Sn577; Calibrated: 2010/8/18
- Phantom: HAC Test Arch with AMCC; Type: SD HAC P01 BA;
- Measurement SW: DASY4, V4.7 Build 80; Postprocessing SW: SEMCAD, V1.8 Build 186

Scans/z (axial) fine 2mm 8 x 8/ABM SNR(x,y,z) (5x5x1):

ABM1/ABM2 = 43.8 dB

ABM1 comp = -0.073 dB A/m

Location: -4, 4, 3.7 mm



0 dB = 1.00A/m

Scans/z (axial) wideband at best S/N/ABM Freq Resp(x,y,z,f)

Loc: -4, 4, 3.7 mm Diff: 0.89dB



#04 T-Coil_CDMA2000 BC0_RC1+SO3_Ch1013_Battery 2_Radial 1 (X)

DUT: 091629

Communication System: CDMA ; Frequency: 824.7 MHz;Duty Cycle: 1:1

Medium: Air Medium parameters used: $\sigma = 0$ mho/m, $\epsilon_r = 1$; $\rho = 1$ kg/m³

Ambient Temperature : 22.6 °C

DASY4 Configuration:

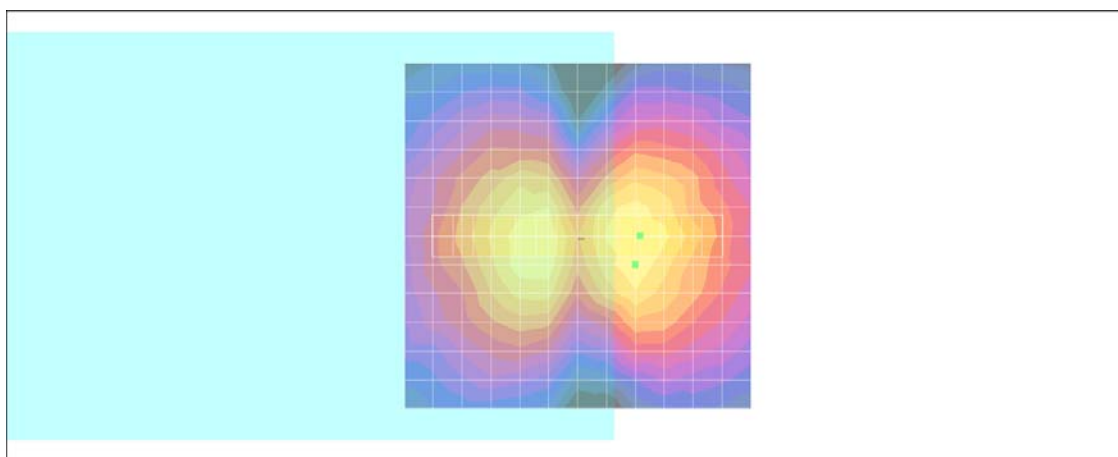
- Probe: AM1DV2 - 1038; ; Calibrated: 2010/1/21
- Sensor-Surface: 0mm (Fix Surface)
- Electronics: DAE3 Sn577; Calibrated: 2010/8/18
- Phantom: HAC Test Arch with AMCC; Type: SD HAC P01 BA;
- Measurement SW: DASY4, V4.7 Build 80; Postprocessing SW: SEMCAD, V1.8 Build 186

Scans/x (longitudinal) fine 3mm 42 x 6/ABM SNR(x,y,z) (15x3x1):

ABM1/ABM2 = 34.8 dB

ABM1 comp = -4.27 dB A/m

Location: -9, 0, 3.7 mm



0 dB = 1.00A/m

#04 T-Coil_CDMA2000 BC0_RC1+SO3_Ch1013_Battery 2_Radial 2 (Y)

DUT: 091629

Communication System: CDMA ; Frequency: 824.7 MHz;Duty Cycle: 1:1

Medium: Air Medium parameters used: $\sigma = 0$ mho/m, $\epsilon_r = 1$; $\rho = 1$ kg/m³

Ambient Temperature : 22.6 °C

DASY4 Configuration:

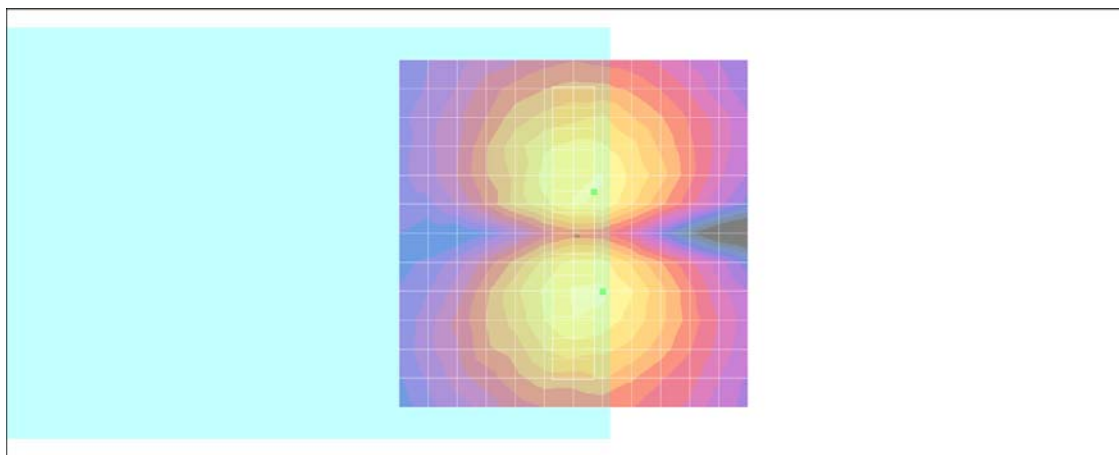
- Probe: AM1DV2 - 1038; ; Calibrated: 2010/1/21
- Sensor-Surface: 0mm (Fix Surface)
- Electronics: DAE3 Sn577; Calibrated: 2010/8/18
- Phantom: HAC Test Arch with AMCC; Type: SD HAC P01 BA;
- Measurement SW: DASY4, V4.7 Build 80; Postprocessing SW: SEMCAD, V1.8 Build 186

Scans/y (transversal) fine 3mm 6 x 42/ABM SNR(x,y,z) (3x15x1):

ABM1/ABM2 = 37.7 dB

ABM1 comp = -5.09 dB A/m

Location: -3, -6, 3.7 mm



0 dB = 1.00A/m

#10 T-Coil_CDMA2000 BC0_RC1+SO3_Ch1013_Battery1_Slide Right_Axial (Z)

DUT: 091629

Communication System: CDMA ; Frequency: 824.7 MHz;Duty Cycle: 1:1

Medium: Air Medium parameters used: $\sigma = 0$ mho/m, $\epsilon_r = 1$; $\rho = 1$ kg/m³

Ambient Temperature : 22.4 °C

DASY4 Configuration:

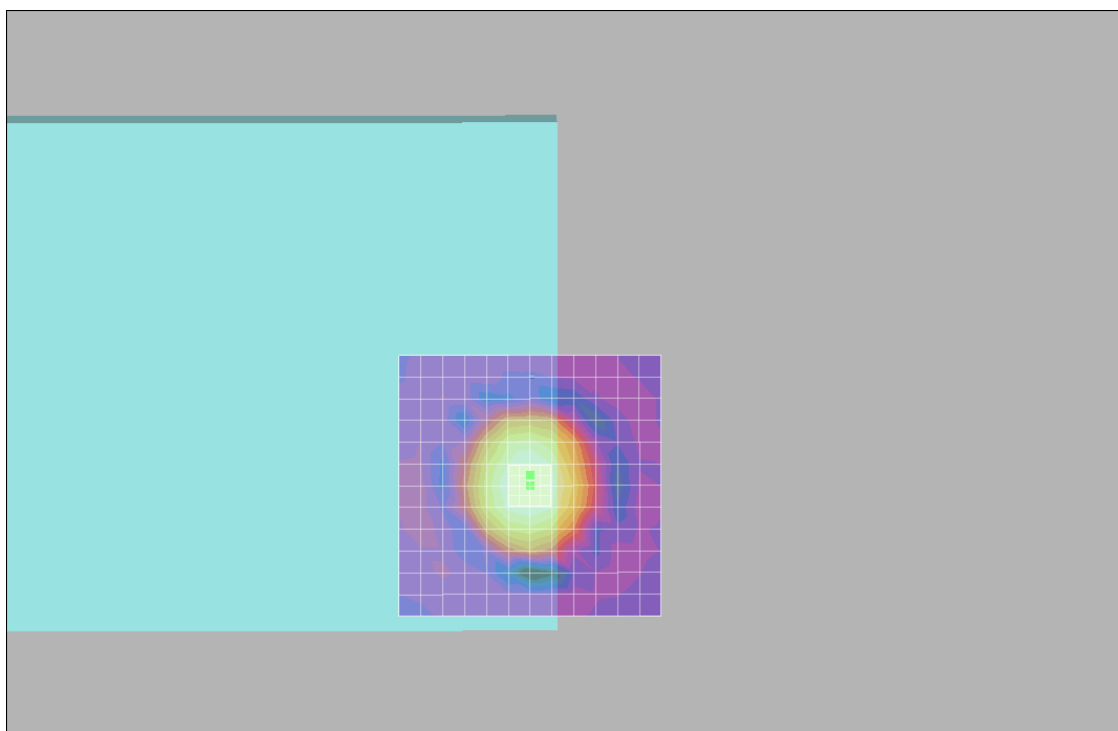
- Probe: AM1DV2 - 1038; ; Calibrated: 2010/1/21
- Sensor-Surface: 0mm (Fix Surface)
- Electronics: DAE3 Sn577; Calibrated: 2010/8/18
- Phantom: HAC Test Arch with AMCC; Type: SD HAC P01 BA;
- Measurement SW: DASY4, V4.7 Build 80; Postprocessing SW: SEMCAD, V1.8 Build 186

Scans/z (axial) fine 2mm 8 x 8/ABM SNR(x,y,z) (5x5x1):

ABM1/ABM2 = 40.6 dB

ABM1 comp = 2.39 dB A/m

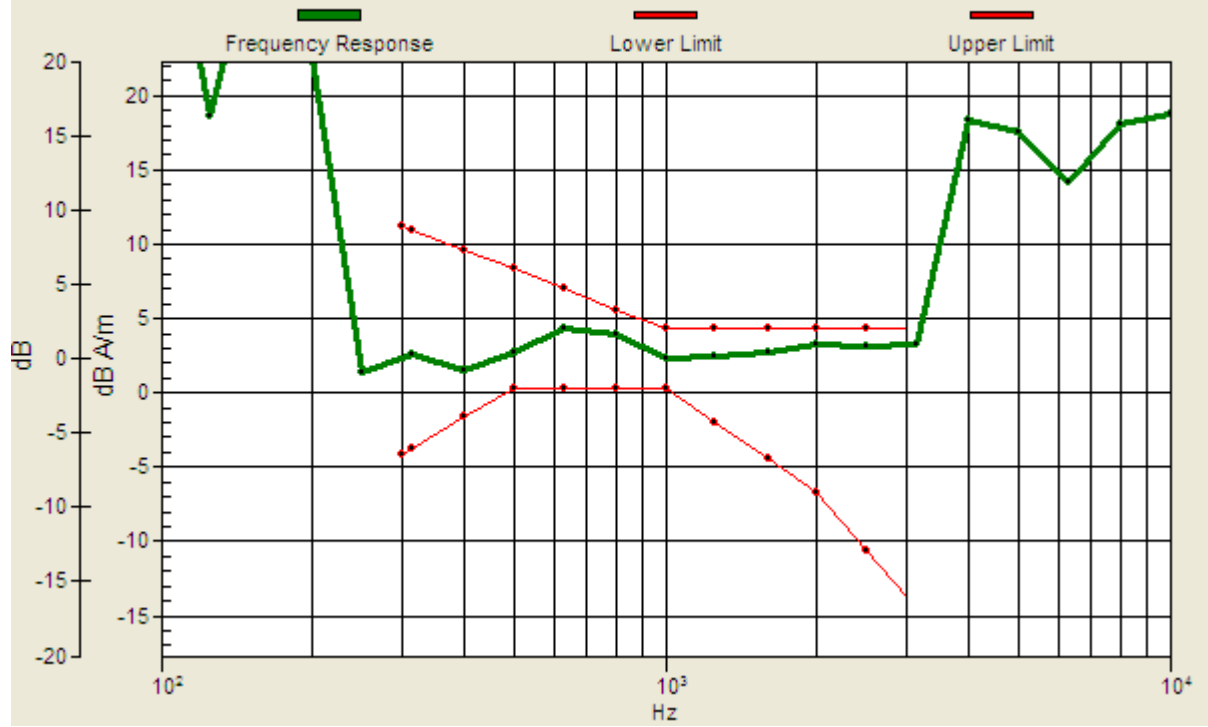
Location: -2, 0, 3.7 mm



0 dB = 1.00A/m

Scans/z (axial) wideband at best S/N/ABM Freq Resp(x,y,z,f)

Loc: -2, 0, 3.7 mm Diff: 1.04dB



#10 T-Coil_CDMA2000 BC0_RC1+SO3_Ch1013_Battery1_Slide Right_Radial 1 (X)

DUT: 091629

Communication System: CDMA ; Frequency: 824.7 MHz;Duty Cycle: 1:1

Medium: Air Medium parameters used: $\sigma = 0$ mho/m, $\epsilon_r = 1$; $\rho = 1$ kg/m³

Ambient Temperature : 22.4 °C

DASY4 Configuration:

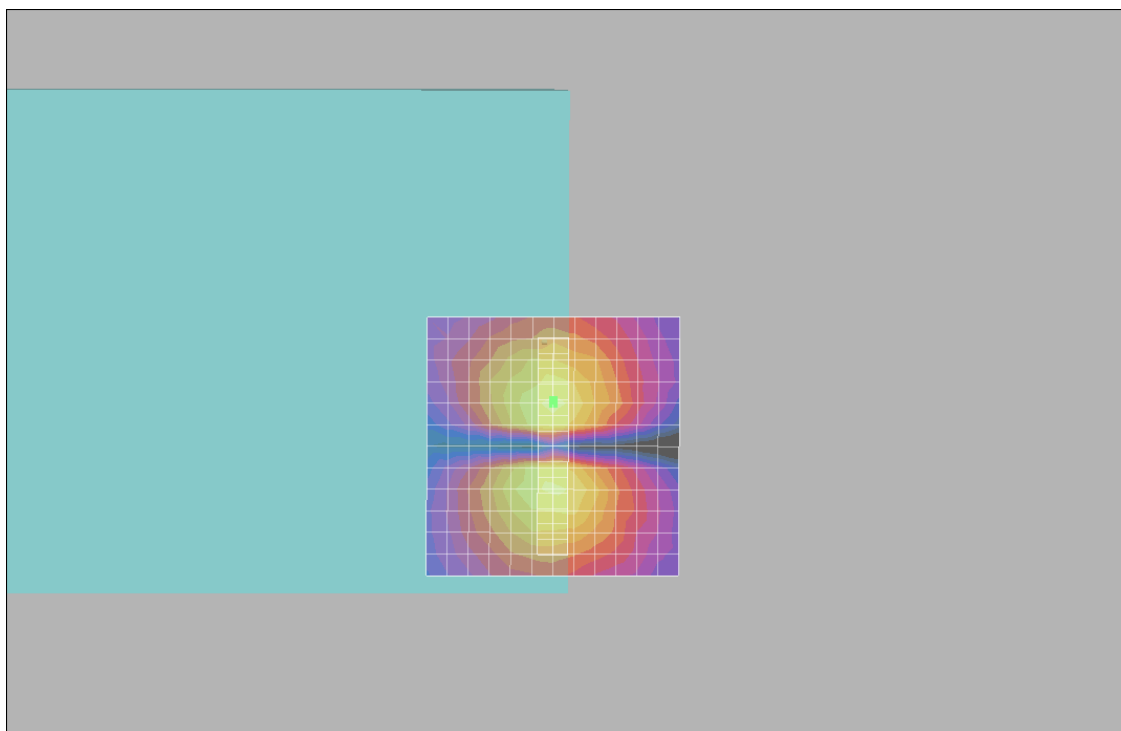
- Probe: AM1DV2 - 1038; ; Calibrated: 2010/1/21
- Sensor-Surface: 0mm (Fix Surface)
- Electronics: DAE3 Sn577; Calibrated: 2010/8/18
- Phantom: HAC Test Arch with AMCC; Type: SD HAC P01 BA;
- Measurement SW: DASY4, V4.7 Build 80; Postprocessing SW: SEMCAD, V1.8 Build 186

Scans/x (longitudinal) fine 3mm 42 x 6/ABM SNR(x,y,z) (15x3x1):

ABM1/ABM2 = 42.4 dB

ABM1 comp = -4.89 dB A/m

Location: -9, 0, 3.7 mm



0 dB = 1.00A/m

#10 T-Coil_CDMA2000 BC0_RC1+SO3_Ch1013_Battery1_Slide Right_Radial 2 (Y)

DUT: 091629

Communication System: CDMA ; Frequency: 824.7 MHz;Duty Cycle: 1:1

Medium: Air Medium parameters used: $\sigma = 0$ mho/m, $\epsilon_r = 1$; $\rho = 1$ kg/m³

Ambient Temperature : 22.4 °C

DASY4 Configuration:

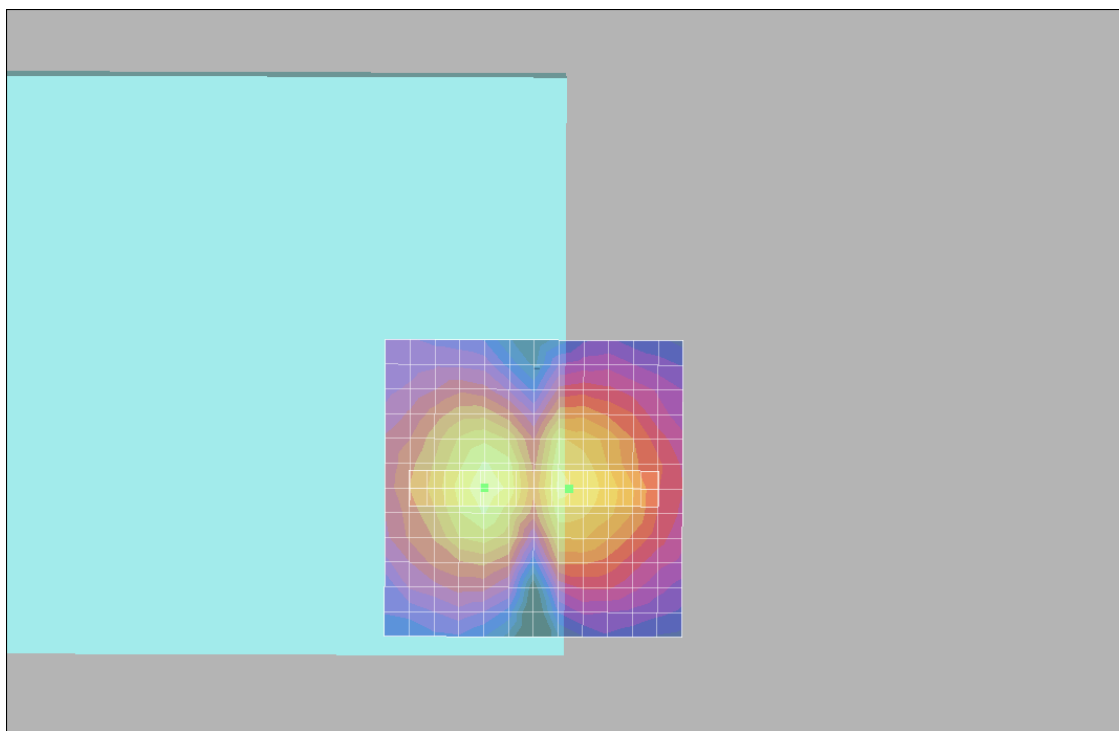
- Probe: AM1DV2 - 1038; ; Calibrated: 2010/1/21
- Sensor-Surface: 0mm (Fix Surface)
- Electronics: DAE3 Sn577; Calibrated: 2010/8/18
- Phantom: HAC Test Arch with AMCC; Type: SD HAC P01 BA;
- Measurement SW: DASY4, V4.7 Build 80; Postprocessing SW: SEMCAD, V1.8 Build 186

Scans/y (transversal) fine 3mm 6 x 42/ABM SNR(x,y,z) (3x15x1):

ABM1/ABM2 = 33.8 dB

ABM1 comp = -4.14 dB A/m

Location: 0, 6, 3.7 mm



0 dB = 1.00A/m

#05 T-Coil_CDMA2000 BC1_RC1+SO3_Ch600_Battery 1_Axial (Z)

DUT: 091629

Communication System: CDMA ; Frequency: 1880 MHz;Duty Cycle: 1:1

Medium: Air Medium parameters used: $\sigma = 0$ mho/m, $\epsilon_r = 1$; $\rho = 1$ kg/m³

Ambient Temperature : 22.6 °C

DASY4 Configuration:

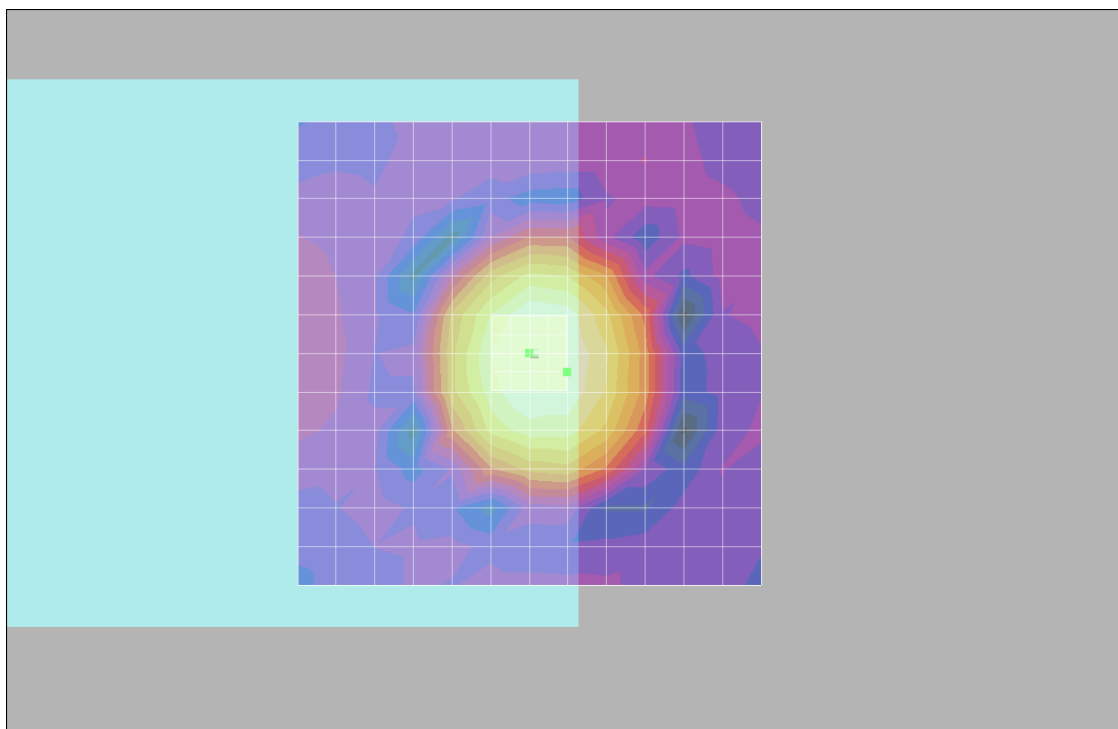
- Probe: AM1DV2 - 1038; ; Calibrated: 2010/1/21
- Sensor-Surface: 0mm (Fix Surface)
- Electronics: DAE3 Sn577; Calibrated: 2010/8/18
- Phantom: HAC Test Arch with AMCC; Type: SD HAC P01 BA;
- Measurement SW: DASY4, V4.7 Build 80; Postprocessing SW: SEMCAD, V1.8 Build 186

Scans/z (axial) fine 2mm 8 x 8/ABM SNR(x,y,z) (5x5x1):

ABM1/ABM2 = 35.2 dB

ABM1 comp = 1.04 dB A/m

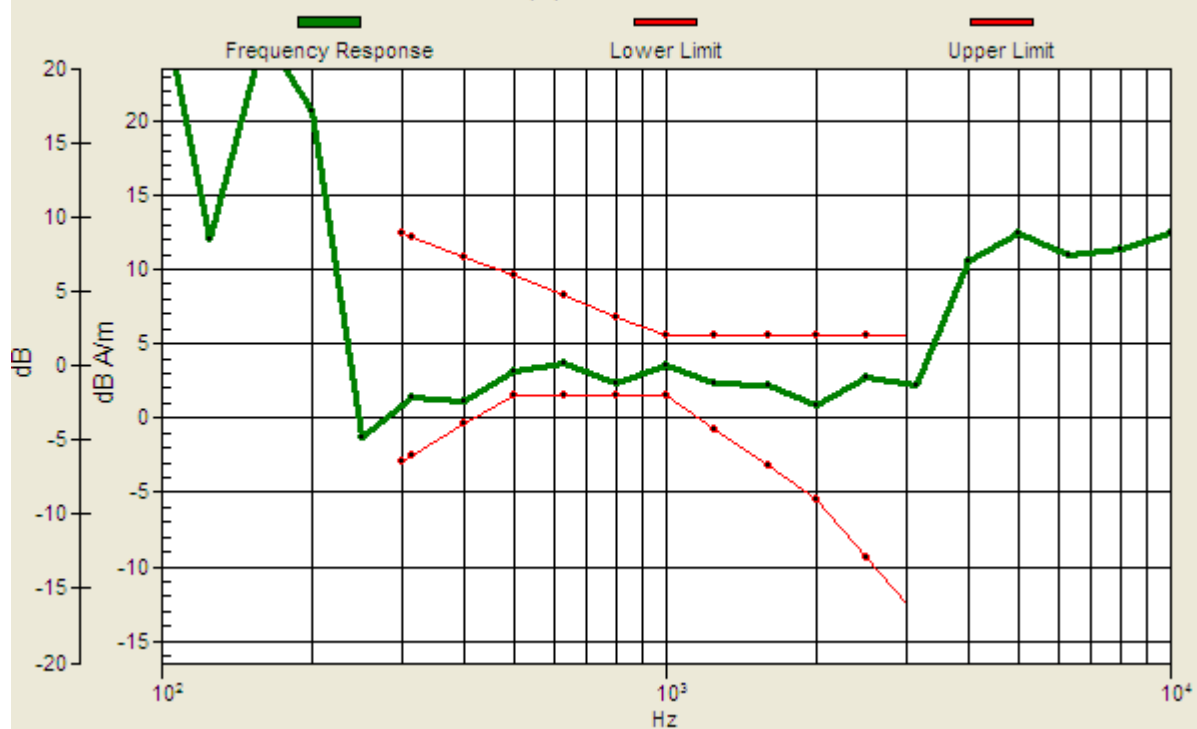
Location: -4, 2, 3.7 mm



0 dB = 1.00A/m

Scans/z (axial) wideband at best S/N/ABM Freq Resp(x,y,z,f)

Loc: -4, 2, 3.7 mm Diff: 0.76dB



#05 T-Coil_CDMA2000 BC1_RC1+SO3_Ch600_Battery 1_Radial 1 (X)

DUT: 091629

Communication System: CDMA ; Frequency: 1880 MHz;Duty Cycle: 1:1

Medium: Air Medium parameters used: $\sigma = 0$ mho/m, $\epsilon_r = 1$; $\rho = 1$ kg/m³

Ambient Temperature : 22.6 °C

DASY4 Configuration:

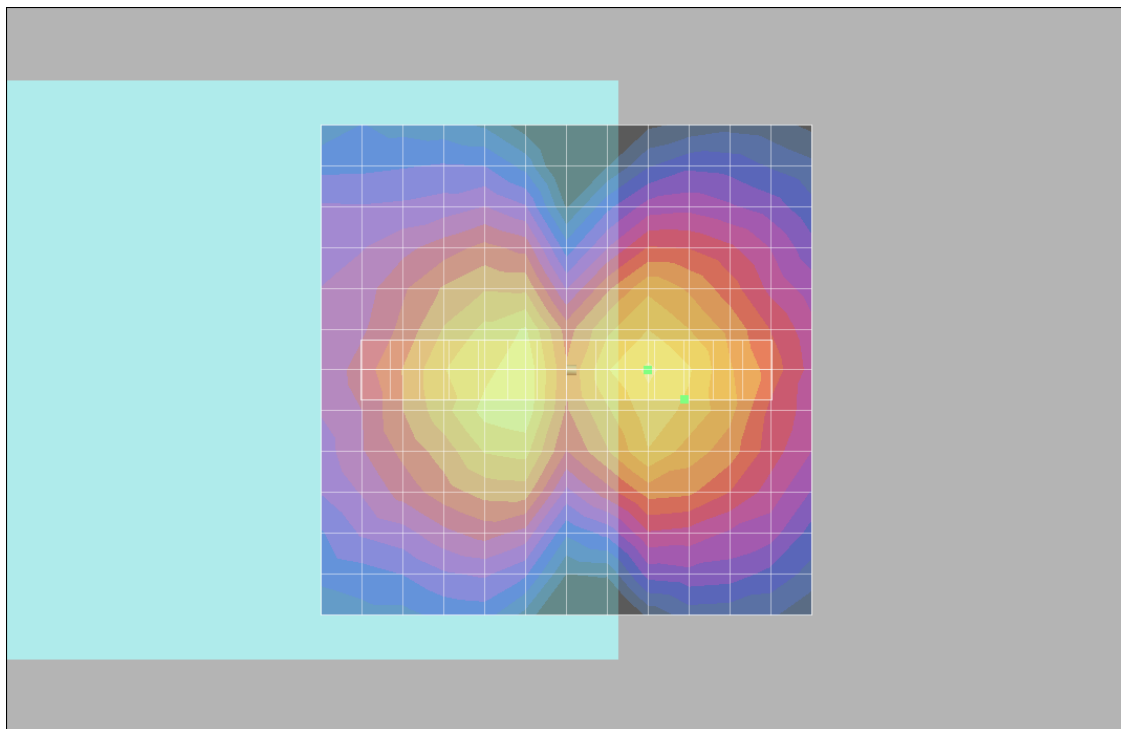
- Probe: AM1DV2 - 1038; ; Calibrated: 2010/1/21
- Sensor-Surface: 0mm (Fix Surface)
- Electronics: DAE3 Sn577; Calibrated: 2010/8/18
- Phantom: HAC Test Arch with AMCC; Type: SD HAC P01 BA;
- Measurement SW: DASY4, V4.7 Build 80; Postprocessing SW: SEMCAD, V1.8 Build 186

Scans/x (longitudinal) fine 3mm 42 x 6/ABM SNR(x,y,z) (15x3x1):

ABM1/ABM2 = 30.3 dB

ABM1 comp = -7.64 dB A/m

Location: -12, 3, 3.7 mm



0 dB = 1.00A/m

#05 T-Coil_CDMA2000 BC1_RC1+SO3_Ch600_Battery 1_Radial 2 (Y)

DUT: 091629

Communication System: CDMA ; Frequency: 1880 MHz;Duty Cycle: 1:1

Medium: Air Medium parameters used: $\sigma = 0$ mho/m, $\epsilon_r = 1$; $\rho = 1$ kg/m³

Ambient Temperature : 22.5 °C

DASY4 Configuration:

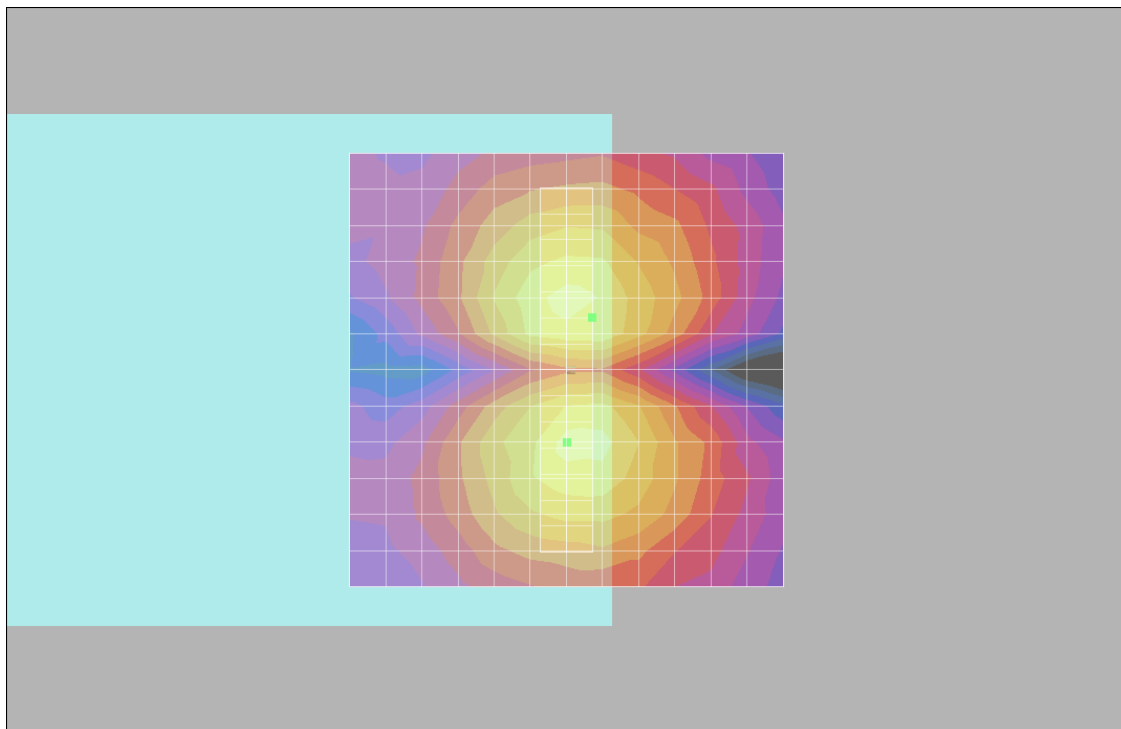
- Probe: AM1DV2 - 1038; ; Calibrated: 2010/1/21
- Sensor-Surface: 0mm (Fix Surface)
- Electronics: DAE3 Sn577; Calibrated: 2010/8/18
- Phantom: HAC Test Arch with AMCC; Type: SD HAC P01 BA;
- Measurement SW: DASY4, V4.7 Build 80; Postprocessing SW: SEMCAD, V1.8 Build 186

Scans/y (transversal) fine 3mm 6 x 42/ABM SNR(x,y,z) (3x15x1):

ABM1/ABM2 = 36.2 dB

ABM1 comp = -5.71 dB A/m

Location: -3, -6, 3.7 mm



0 dB = 1.00A/m

#06 T-Coil_CDMA2000 BC1_RC1+SO3_Ch25_Battery 1_Axial (Z)

DUT: 091629

Communication System: CDMA ; Frequency: 1851.25 MHz;Duty Cycle: 1:1

Medium: Air Medium parameters used: $\sigma = 0$ mho/m, $\epsilon_r = 1$; $\rho = 1$ kg/m³

Ambient Temperature : 22.4 °C

DASY4 Configuration:

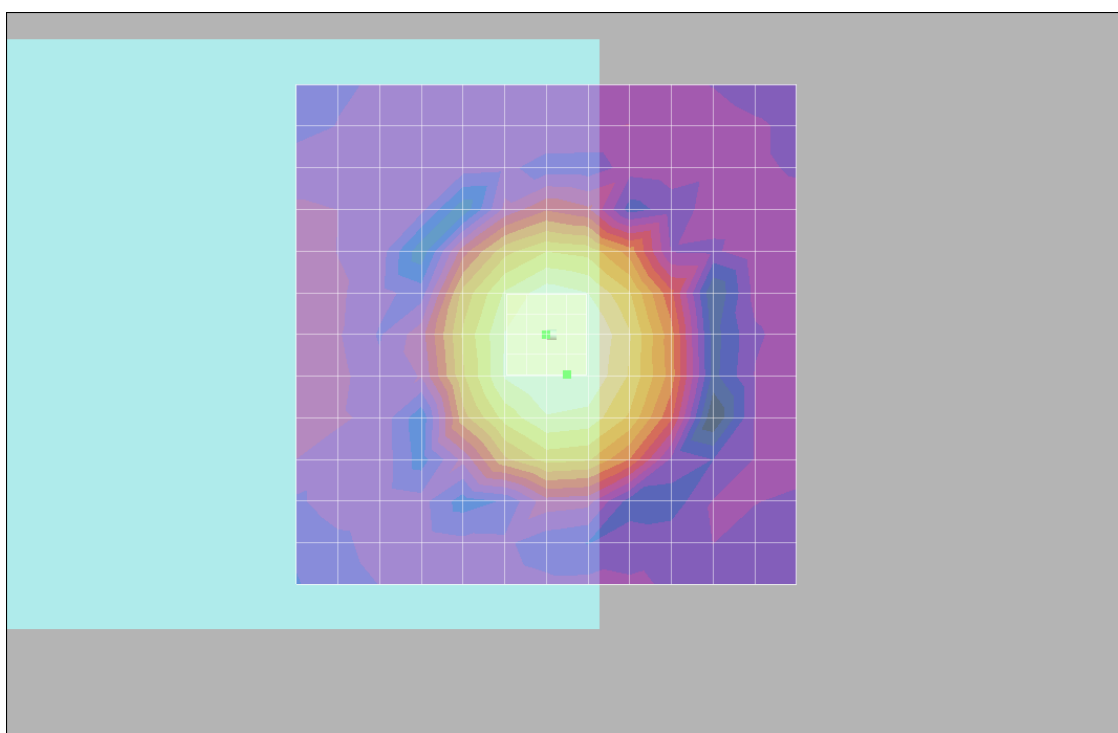
- Probe: AM1DV2 - 1038; ; Calibrated: 2010/1/21
- Sensor-Surface: 0mm (Fix Surface)
- Electronics: DAE3 Sn577; Calibrated: 2010/8/18
- Phantom: HAC Test Arch with AMCC; Type: SD HAC P01 BA;
- Measurement SW: DASY4, V4.7 Build 80; Postprocessing SW: SEMCAD, V1.8 Build 186

Scans/z (axial) fine 2mm 8 x 8/ABM SNR(x,y,z) (5x5x1):

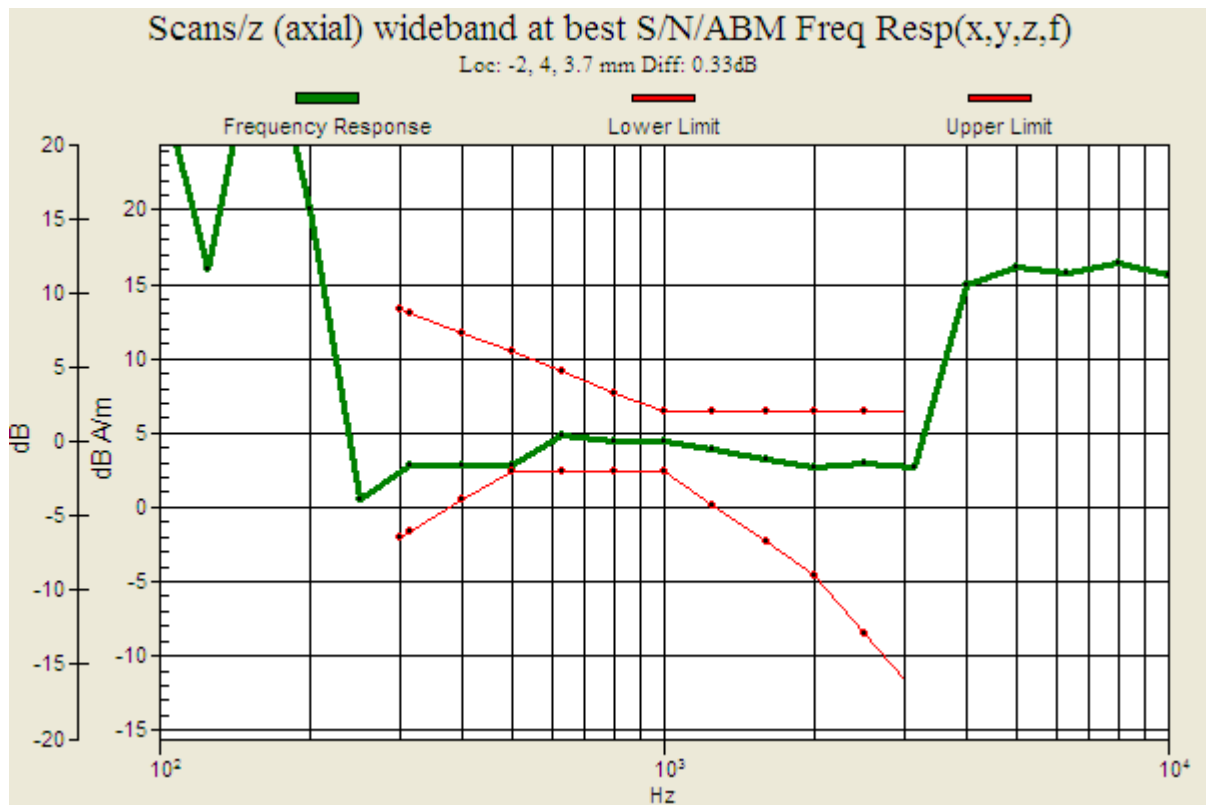
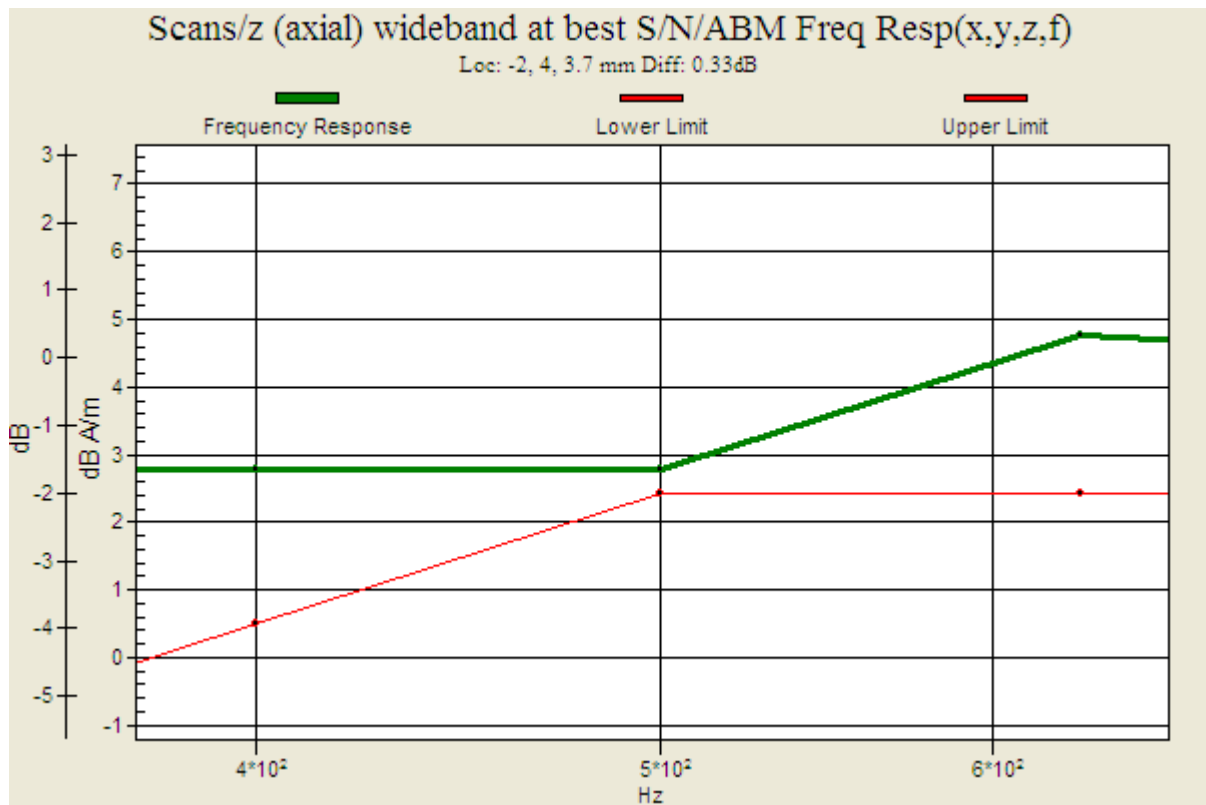
ABM1/ABM2 = 36.0 dB

ABM1 comp = 1.85 dB A/m

Location: -2, 4, 3.7 mm



0 dB = 1.00A/m



#06 T-Coil_CDMA2000 BC1_RC1+SO3_Ch25_Battery 1_Radial 1 (X)

DUT: 091629

Communication System: CDMA ; Frequency: 1851.25 MHz;Duty Cycle: 1:1

Medium: Air Medium parameters used: $\sigma = 0$ mho/m, $\epsilon_r = 1$; $\rho = 1$ kg/m³

Ambient Temperature : 22.5 °C

DASY4 Configuration:

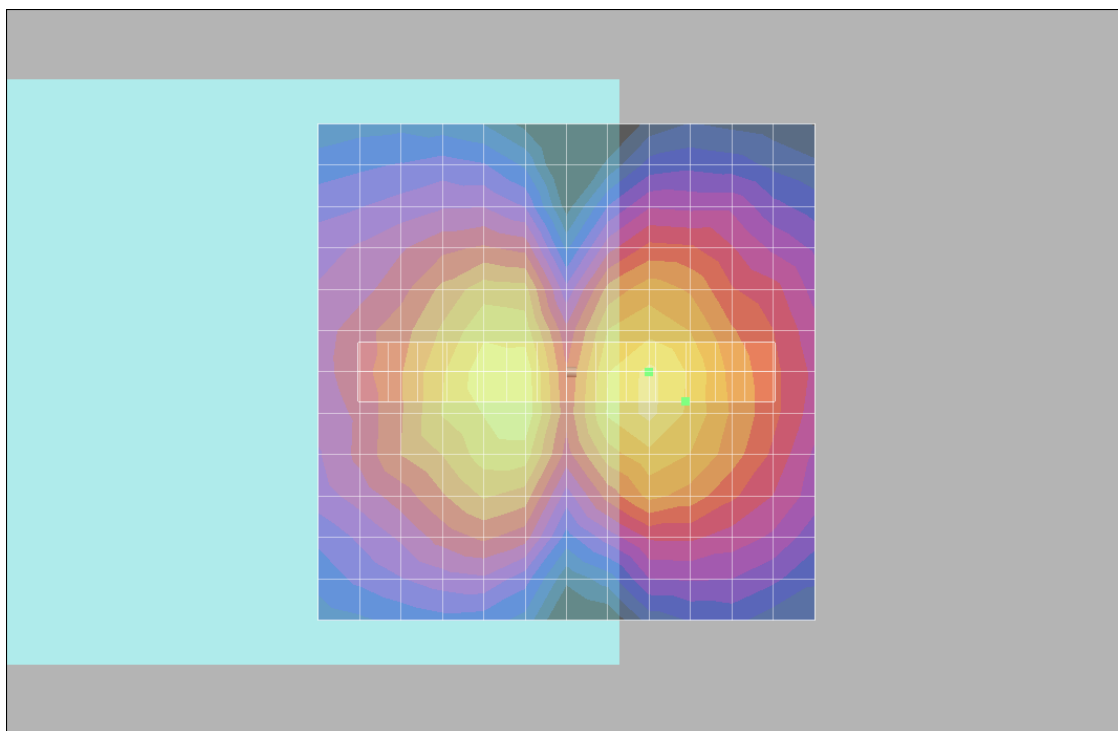
- Probe: AM1DV2 - 1038; ; Calibrated: 2010/1/21
- Sensor-Surface: 0mm (Fix Surface)
- Electronics: DAE3 Sn577; Calibrated: 2010/8/18
- Phantom: HAC Test Arch with AMCC; Type: SD HAC P01 BA;
- Measurement SW: DASY4, V4.7 Build 80; Postprocessing SW: SEMCAD, V1.8 Build 186

Scans/x (longitudinal) fine 3mm 42 x 6/ABM SNR(x,y,z) (15x3x1):

ABM1/ABM2 = 31.2 dB

ABM1 comp = -7.37 dB A/m

Location: -12, 3, 3.7 mm



0 dB = 1.00A/m

#06 T-Coil_CDMA2000 BC1_RC1+SO3_Ch25_Battery 1_Radial 2 (Y)

DUT: 091629

Communication System: CDMA ; Frequency: 1851.25 MHz;Duty Cycle: 1:1

Medium: Air Medium parameters used: $\sigma = 0$ mho/m, $\epsilon_r = 1$; $\rho = 1$ kg/m³

Ambient Temperature : 22.5 °C

DASY4 Configuration:

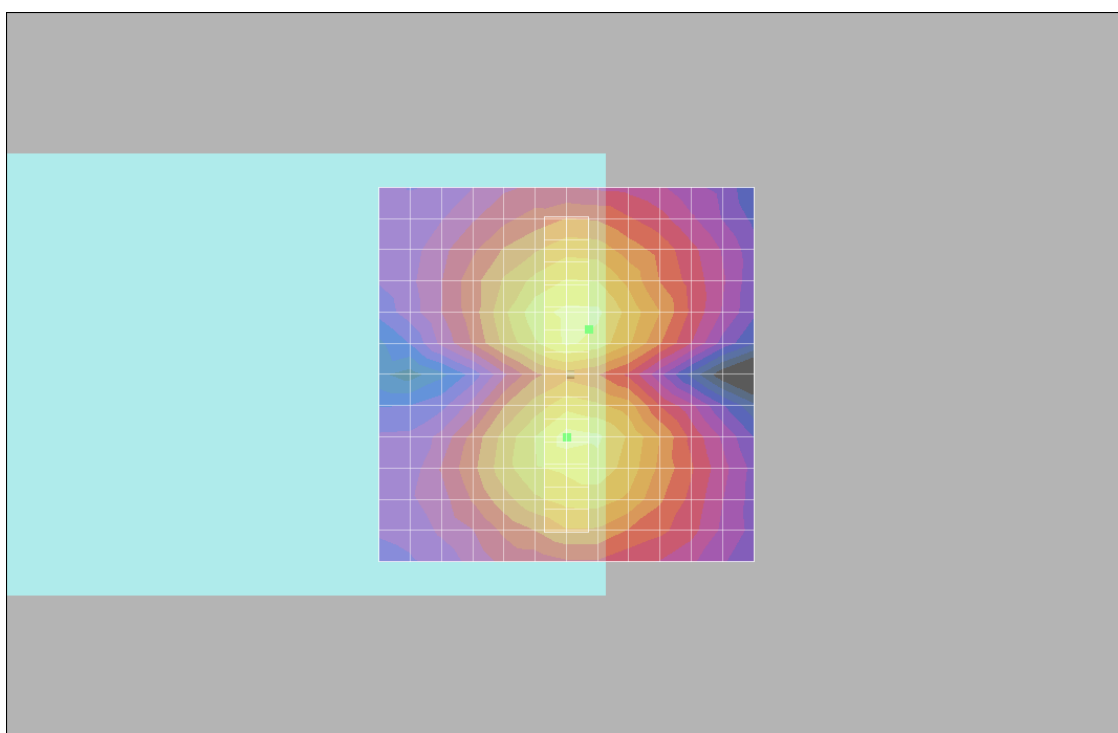
- Probe: AM1DV2 - 1038; ; Calibrated: 2010/1/21
- Sensor-Surface: 0mm (Fix Surface)
- Electronics: DAE3 Sn577; Calibrated: 2010/8/18
- Phantom: HAC Test Arch with AMCC; Type: SD HAC P01 BA;
- Measurement SW: DASY4, V4.7 Build 80; Postprocessing SW: SEMCAD, V1.8 Build 186

Scans/y (transversal) fine 3mm 6 x 42/ABM SNR(x,y,z) (3x15x1):

ABM1/ABM2 = 37.0 dB

ABM1 comp = -5.28 dB A/m

Location: -3, -6, 3.7 mm



0 dB = 1.00A/m

#07 T-Coil_CDMA2000 BC1_RC1+SO3_Ch1175_Battery 1_Axial (Z)

DUT: 091629

Communication System: CDMA ; Frequency: 1908.75 MHz;Duty Cycle: 1:1

Medium: Air Medium parameters used: $\sigma = 0$ mho/m, $\epsilon_r = 1$; $\rho = 1$ kg/m³

Ambient Temperature : 22.5 °C

DASY4 Configuration:

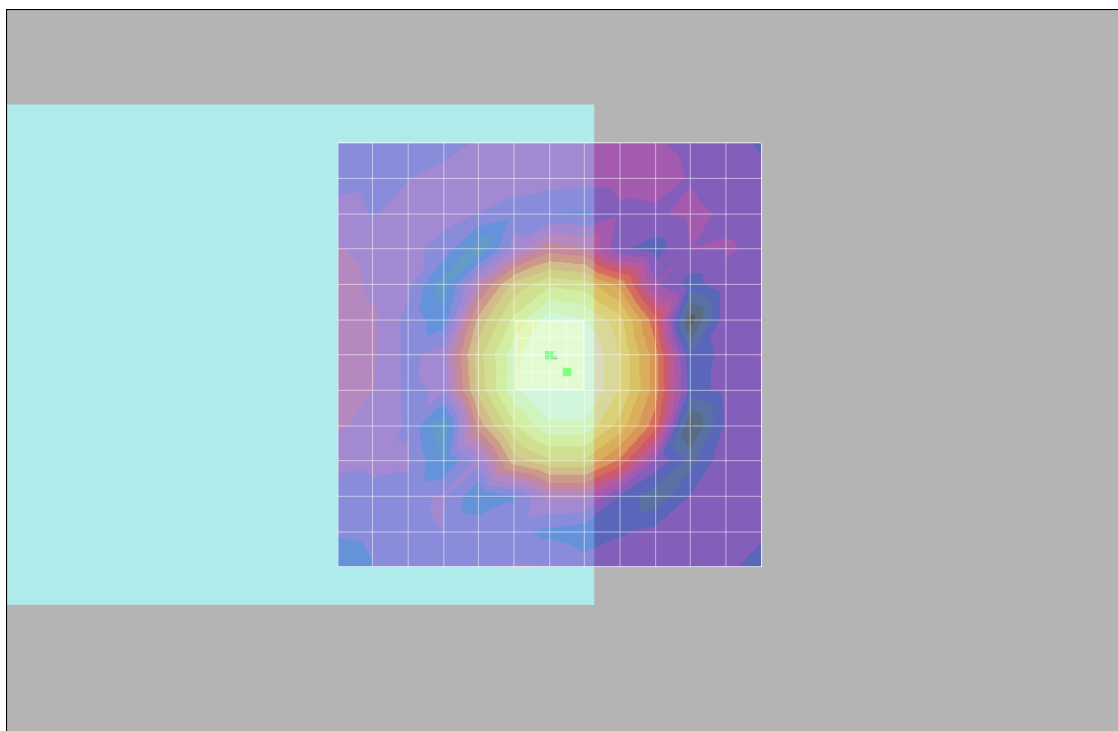
- Probe: AM1DV2 - 1038; ; Calibrated: 2010/1/21
- Sensor-Surface: 0mm (Fix Surface)
- Electronics: DAE3 Sn577; Calibrated: 2010/8/18
- Phantom: HAC Test Arch with AMCC; Type: SD HAC P01 BA;
- Measurement SW: DASY4, V4.7 Build 80; Postprocessing SW: SEMCAD, V1.8 Build 186

Scans/z (axial) fine 2mm 8 x 8/ABM SNR(x,y,z) (5x5x1):

ABM1/ABM2 = 35.4 dB

ABM1 comp = 3.35 dB A/m

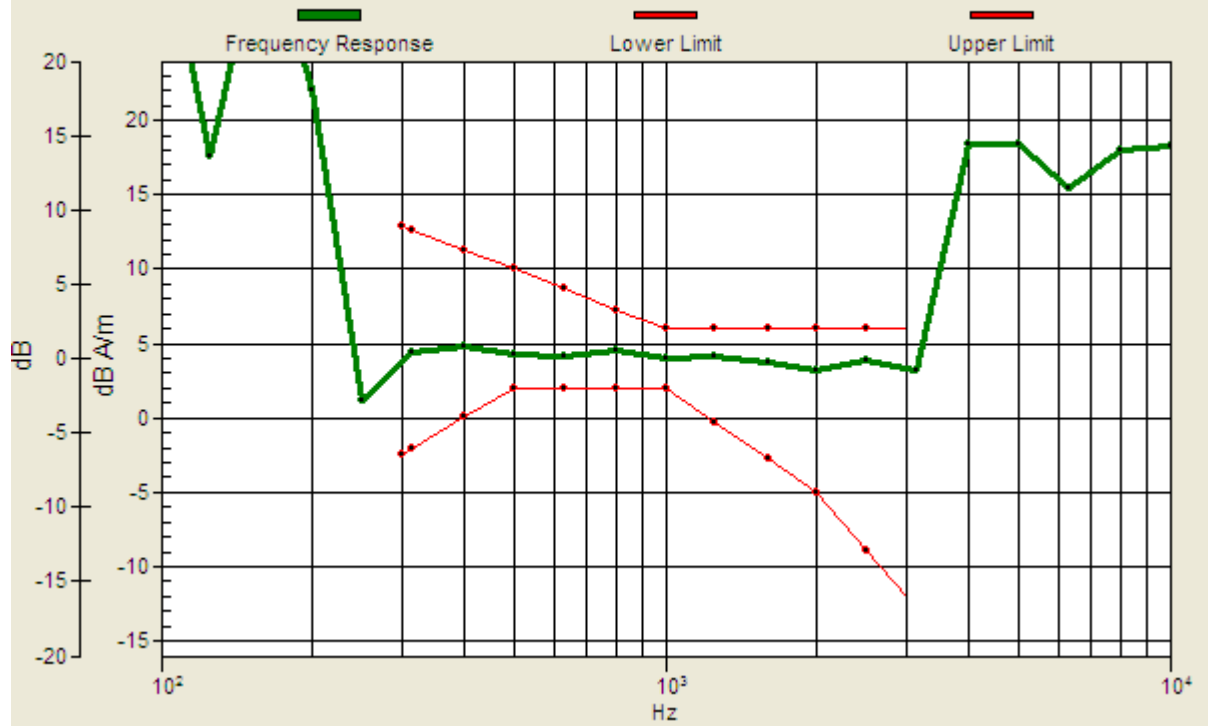
Location: -2, 2, 3.7 mm



0 dB = 1.00A/m

Scans/z (axial) wideband at best S/N/ABM Freq Resp(x,y,z,f)

Loc: -2, 2, 3.7 mm Diff: 1.92dB



#07 T-Coil_CDMA2000 BC1_RC1+SO3_Ch1175_Battery 1_Radial 1 (X)

DUT: 091629

Communication System: CDMA ; Frequency: 1908.75 MHz;Duty Cycle: 1:1

Medium: Air Medium parameters used: $\sigma = 0$ mho/m, $\epsilon_r = 1$; $\rho = 1$ kg/m³

Ambient Temperature : 22.5 °C

DASY4 Configuration:

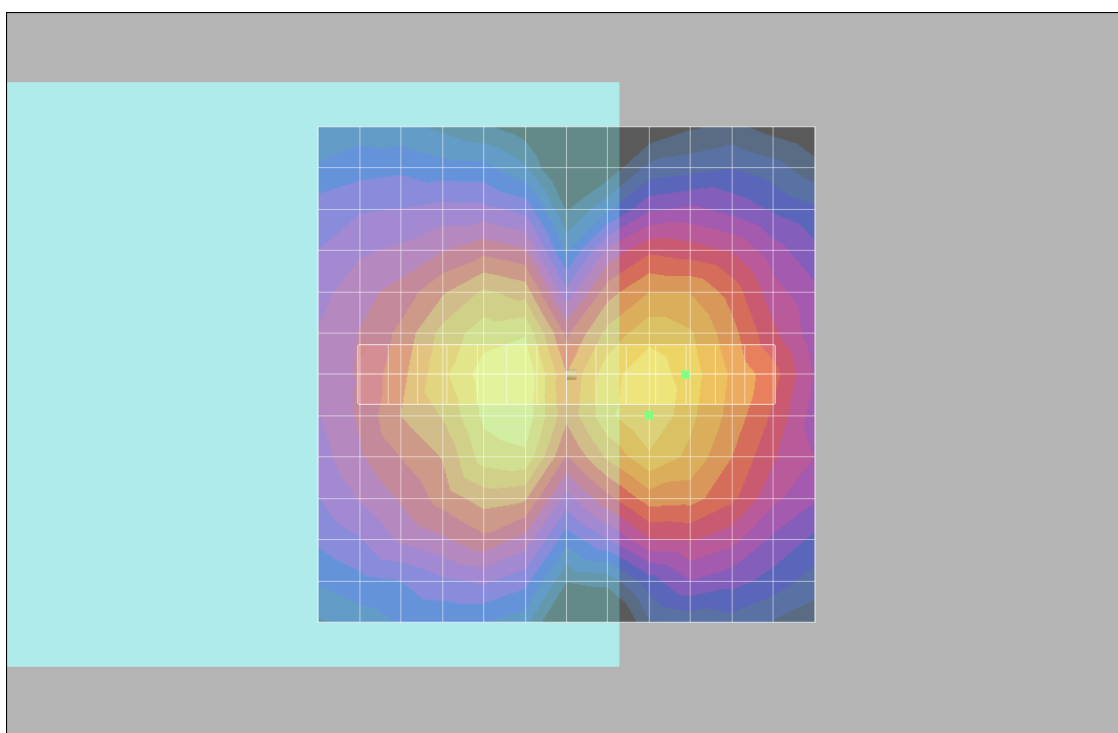
- Probe: AM1DV2 - 1038; ; Calibrated: 2010/1/21
- Sensor-Surface: 0mm (Fix Surface)
- Electronics: DAE3 Sn577; Calibrated: 2010/8/18
- Phantom: HAC Test Arch with AMCC; Type: SD HAC P01 BA;
- Measurement SW: DASY4, V4.7 Build 80; Postprocessing SW: SEMCAD, V1.8 Build 186

Scans/x (longitudinal) fine 3mm 42 x 6/ABM SNR(x,y,z) (15x3x1):

ABM1/ABM2 = 30.6 dB

ABM1 comp = -7.78 dB A/m

Location: -12, 0, 3.7 mm



0 dB = 1.00A/m

#07 T-Coil_CDMA2000 BC1_RC1+SO3_Ch1175_Battery 1_Radial 2 (Y)

DUT: 091629

Communication System: CDMA ; Frequency: 1908.75 MHz;Duty Cycle: 1:1

Medium: Air Medium parameters used: $\sigma = 0$ mho/m, $\epsilon_r = 1$; $\rho = 1$ kg/m³

Ambient Temperature : 22.4 °C

DASY4 Configuration:

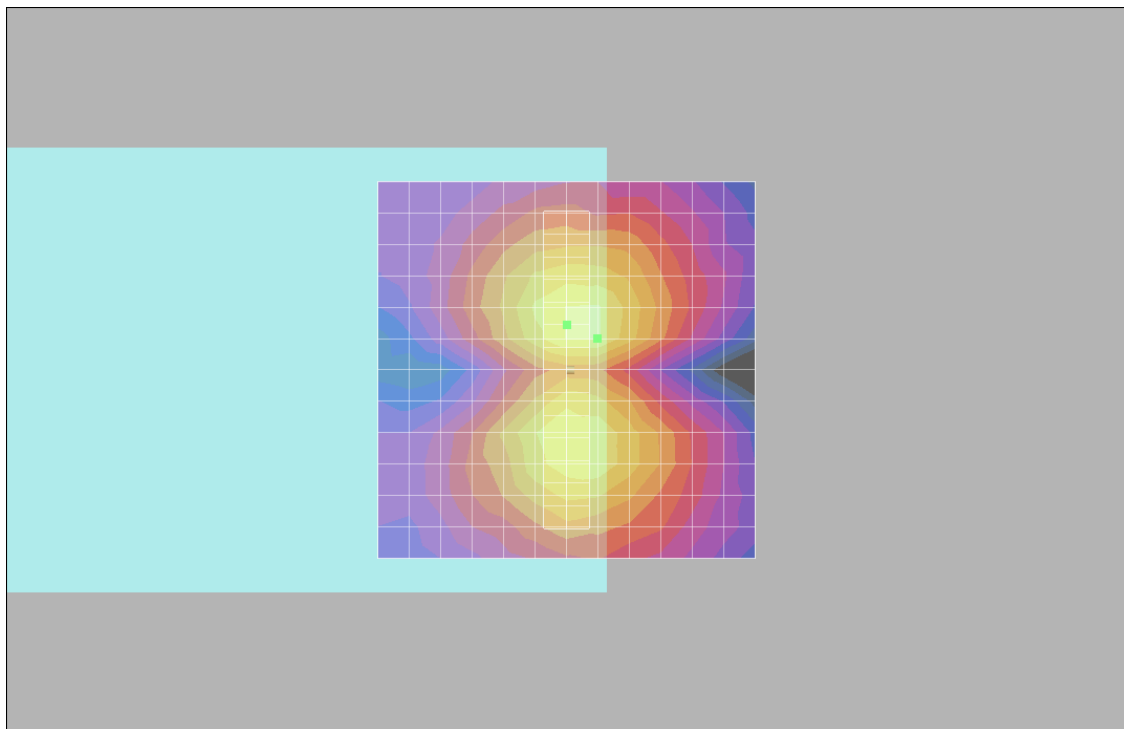
- Probe: AM1DV2 - 1038; ; Calibrated: 2010/1/21
- Sensor-Surface: 0mm (Fix Surface)
- Electronics: DAE3 Sn577; Calibrated: 2010/8/18
- Phantom: HAC Test Arch with AMCC; Type: SD HAC P01 BA;
- Measurement SW: DASY4, V4.7 Build 80; Postprocessing SW: SEMCAD, V1.8 Build 186

Scans/y (transversal) fine 3mm 6 x 42/ABM SNR(x,y,z) (3x15x1):

ABM1/ABM2 = 36.4 dB

ABM1 comp = -4.38 dB A/m

Location: 0, -6, 3.7 mm



0 dB = 1.00A/m

#08 T-Coil_CDMA2000 BC1_RC1+SO3_Ch600_Battery 2_Axial (Z)

DUT: 091629

Communication System: CDMA ; Frequency: 1880 MHz;Duty Cycle: 1:1

Medium: Air Medium parameters used: $\sigma = 0$ mho/m, $\epsilon_r = 1$; $\rho = 1$ kg/m³

Ambient Temperature : 22.4 °C

DASY4 Configuration:

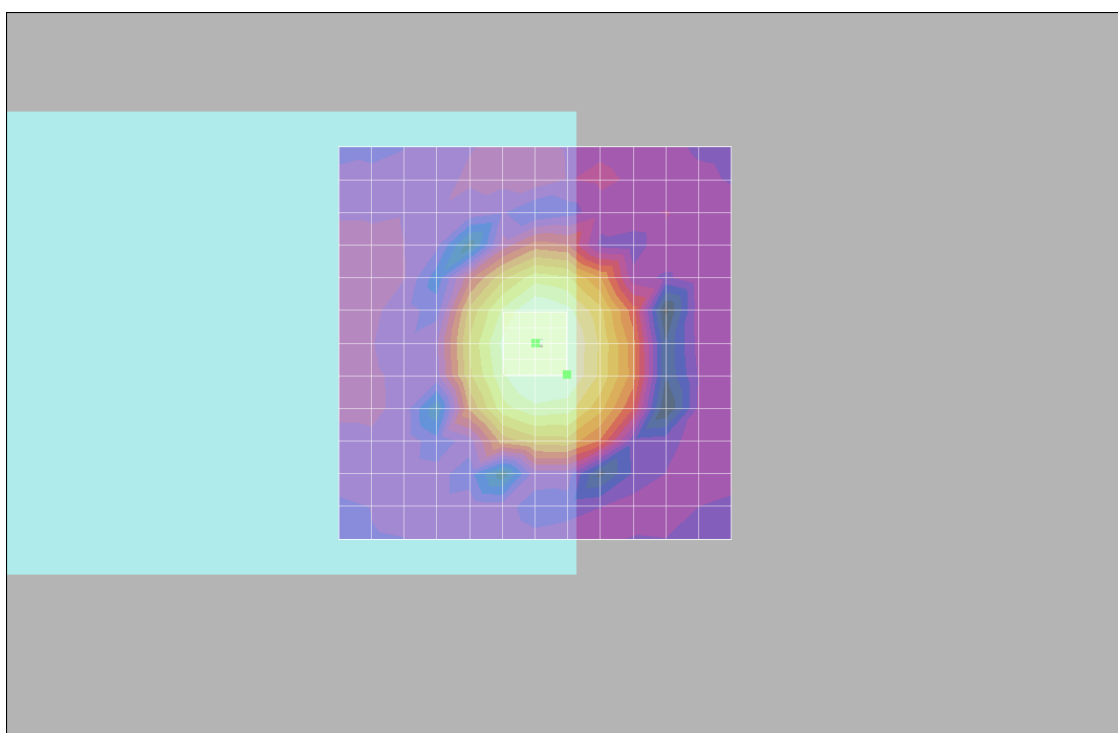
- Probe: AM1DV2 - 1038; ; Calibrated: 2010/1/21
- Sensor-Surface: 0mm (Fix Surface)
- Electronics: DAE3 Sn577; Calibrated: 2010/8/18
- Phantom: HAC Test Arch with AMCC; Type: SD HAC P01 BA;
- Measurement SW: DASY4, V4.7 Build 80; Postprocessing SW: SEMCAD, V1.8 Build 186

Scans/z (axial) fine 2mm 8 x 8/ABM SNR(x,y,z) (5x5x1):

ABM1/ABM2 = 44.5 dB

ABM1 comp = 0.752 dB A/m

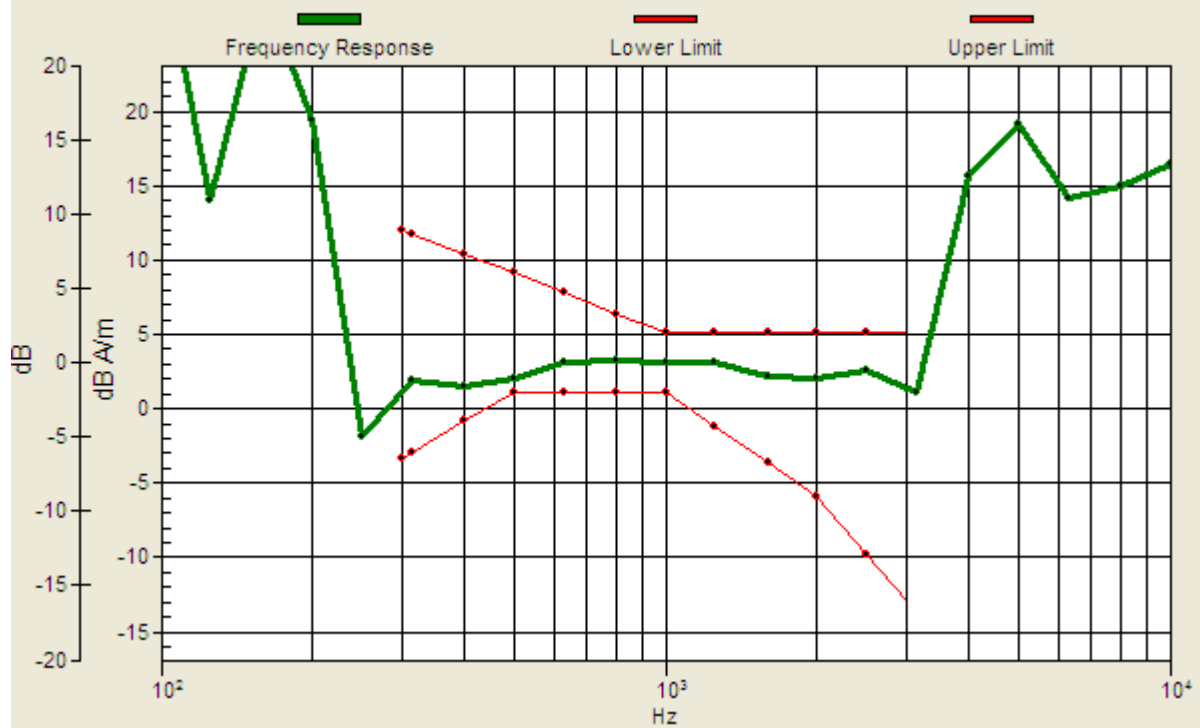
Location: -4, 4, 3.7 mm



0 dB = 1.00A/m

Scans/z (axial) wideband at best S/N/ABM Freq Resp(x,y,z,f)

Loc: -4, 4, 3.7 mm Diff: 0.88dB



#08 T-Coil_CDMA2000 BC1_RC1+SO3_Ch600_Battery 2_Radial 1 (X)

DUT: 091629

Communication System: CDMA ; Frequency: 1880 MHz;Duty Cycle: 1:1

Medium: Air Medium parameters used: $\sigma = 0$ mho/m, $\epsilon_r = 1$; $\rho = 1$ kg/m³

Ambient Temperature : 22.4 °C

DASY4 Configuration:

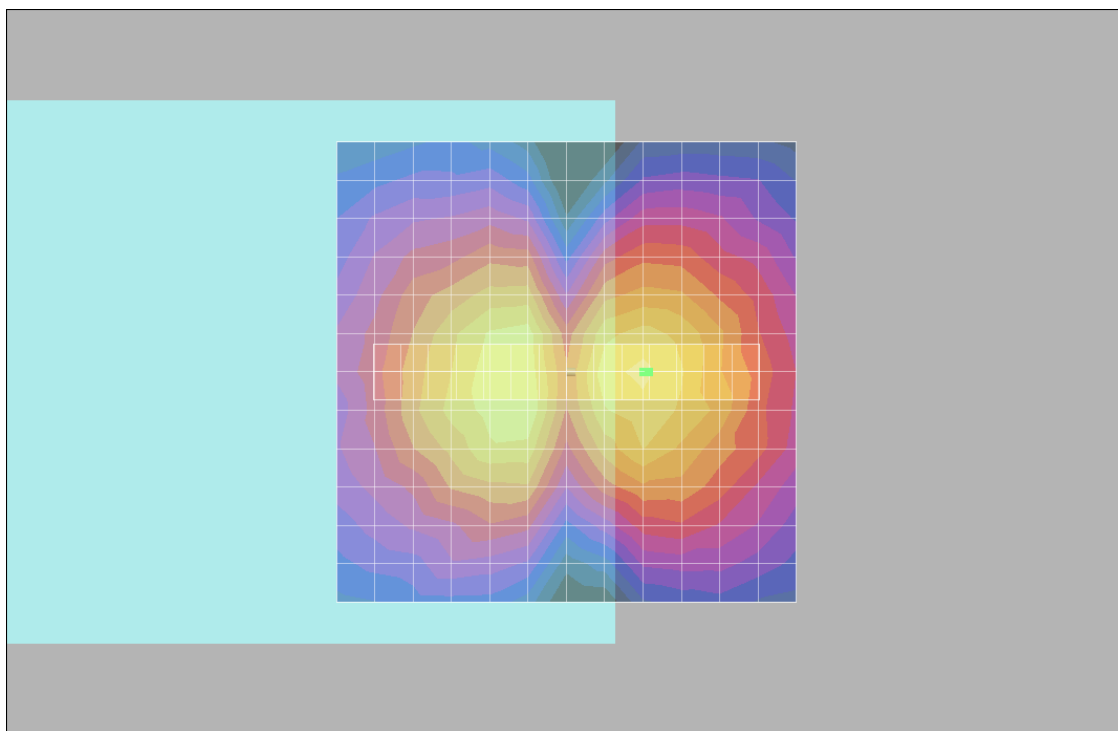
- Probe: AM1DV2 - 1038; ; Calibrated: 2010/1/21
- Sensor-Surface: 0mm (Fix Surface)
- Electronics: DAE3 Sn577; Calibrated: 2010/8/18
- Phantom: HAC Test Arch with AMCC; Type: SD HAC P01 BA;
- Measurement SW: DASY4, V4.7 Build 80; Postprocessing SW: SEMCAD, V1.8 Build 186

Scans/x (longitudinal) fine 3mm 42 x 6/ABM SNR(x,y,z) (15x3x1):

ABM1/ABM2 = 34.0 dB

ABM1 comp = -4.98 dB A/m

Location: -9, 0, 3.7 mm



0 dB = 1.00A/m

#08 T-Coil_CDMA2000 BC1_RC1+SO3_Ch600_Battery 2_Radial 2 (Y)

DUT: 091629

Communication System: CDMA ; Frequency: 1880 MHz;Duty Cycle: 1:1

Medium: Air Medium parameters used: $\sigma = 0$ mho/m, $\epsilon_r = 1$; $\rho = 1$ kg/m³

Ambient Temperature : 22.4 °C

DASY4 Configuration:

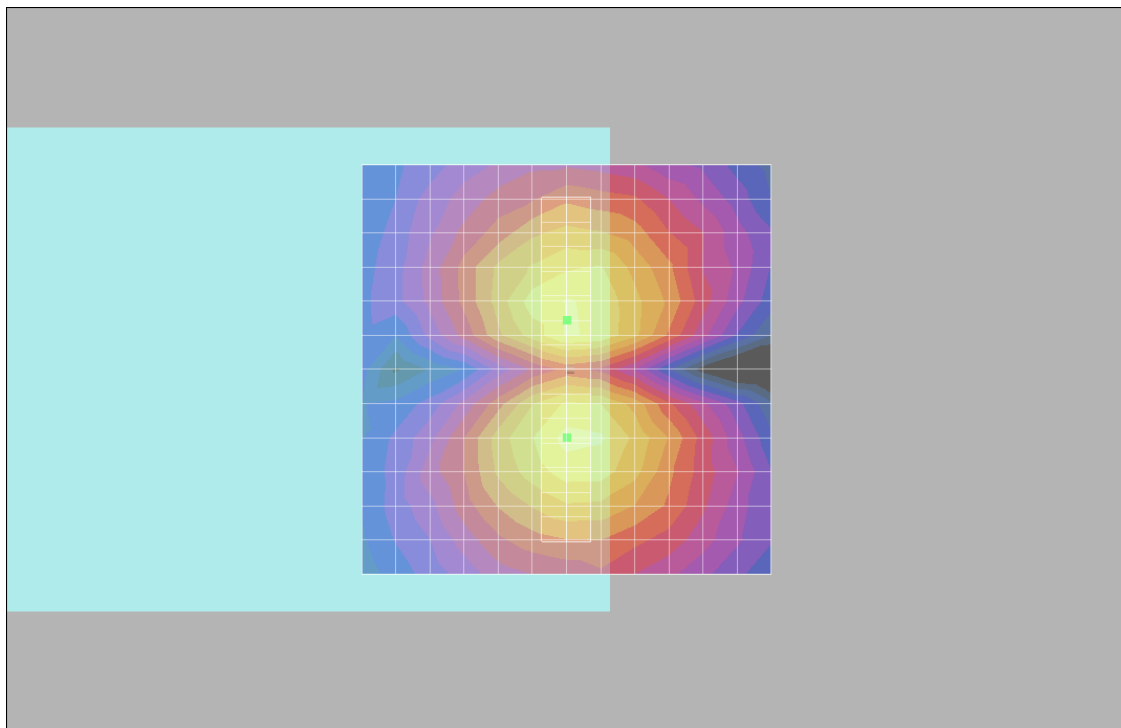
- Probe: AM1DV2 - 1038; ; Calibrated: 2010/1/21
- Sensor-Surface: 0mm (Fix Surface)
- Electronics: DAE3 Sn577; Calibrated: 2010/8/18
- Phantom: HAC Test Arch with AMCC; Type: SD HAC P01 BA;
- Measurement SW: DASY4, V4.7 Build 80; Postprocessing SW: SEMCAD, V1.8 Build 186

Scans/y (transversal) fine 3mm 6 x 42/ABM SNR(x,y,z) (3x15x1):

ABM1/ABM2 = 36.6 dB

ABM1 comp = -4.67 dB A/m

Location: 0, -6, 3.7 mm



0 dB = 1.00A/m

#09 T-Coil_CDMA2000 BC1_RC1+SO3_Ch600_Battery 1_Slide Right_Axial (Z)

DUT: 091629

Communication System: CDMA ; Frequency: 1880 MHz;Duty Cycle: 1:1

Medium: Air Medium parameters used: $\sigma = 0$ mho/m, $\epsilon_r = 1$; $\rho = 1$ kg/m³

Ambient Temperature : 22.4 °C

DASY4 Configuration:

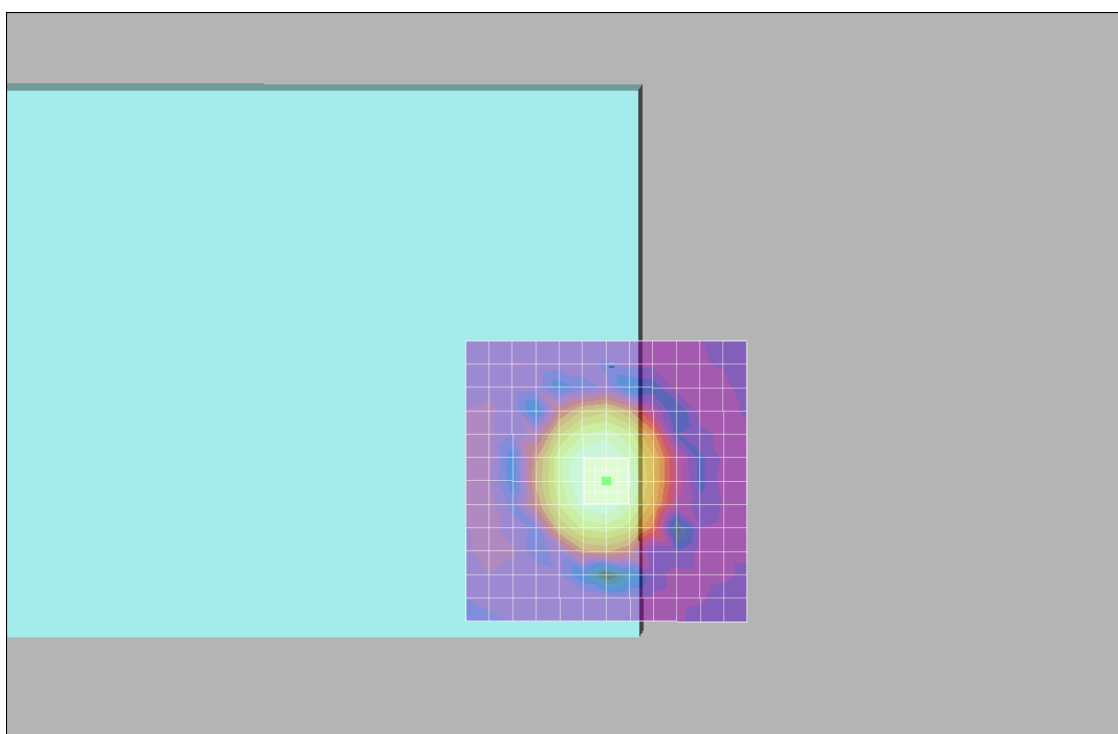
- Probe: AM1DV2 - 1038; ; Calibrated: 2010/1/21
- Sensor-Surface: 0mm (Fix Surface)
- Electronics: DAE3 Sn577; Calibrated: 2010/8/18
- Phantom: HAC Test Arch with AMCC; Type: SD HAC P01 BA;
- Measurement SW: DASY4, V4.7 Build 80; Postprocessing SW: SEMCAD, V1.8 Build 186

Scans/z (axial) fine 2mm 8 x 8/ABM SNR(x,y,z) (5x5x1):

ABM1/ABM2 = 40.4 dB

ABM1 comp = 2.94 dB A/m

Location: 0, 0, 3.7 mm



0 dB = 1.00A/m

Scans/z (axial) wideband at best S/N/ABM Freq Resp(x,y,z,f)

Loc: 0, 0, 3.7 mm Diff: 2dB



#09 T-Coil_CDMA2000 BC1_RC1+SO3_Ch600_Battery 1_Slide Right_Radial 1 (X)

DUT: 091629

Communication System: CDMA ; Frequency: 1880 MHz;Duty Cycle: 1:1

Medium: Air Medium parameters used: $\sigma = 0$ mho/m, $\epsilon_r = 1$; $\rho = 1$ kg/m³

Ambient Temperature : 22.4 °C

DASY4 Configuration:

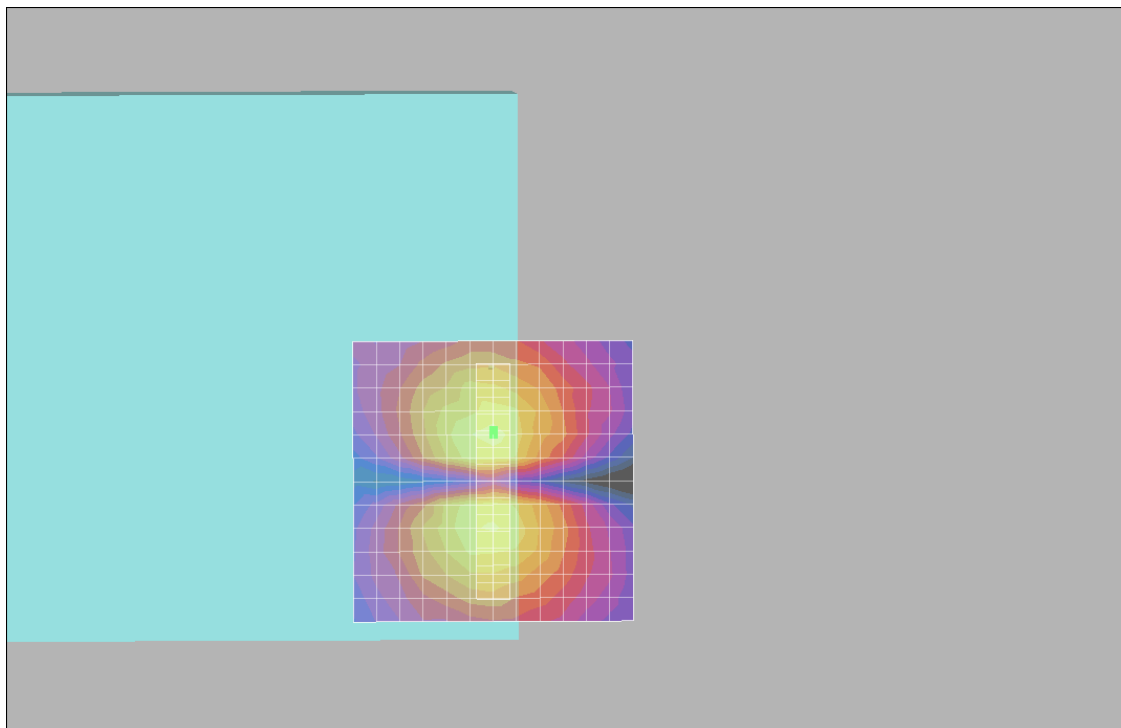
- Probe: AM1DV2 - 1038; ; Calibrated: 2010/1/21
- Sensor-Surface: 0mm (Fix Surface)
- Electronics: DAE3 Sn577; Calibrated: 2010/8/18
- Phantom: HAC Test Arch with AMCC; Type: SD HAC P01 BA;
- Measurement SW: DASY4, V4.7 Build 80; Postprocessing SW: SEMCAD, V1.8 Build 186

Scans/x (longitudinal) fine 3mm 42 x 6/ABM SNR(x,y,z) (15x3x1):

ABM1/ABM2 = 43.1 dB

ABM1 comp = -4.90 dB A/m

Location: -9, 0, 3.7 mm



0 dB = 1.00A/m

#09 T-Coil_CDMA2000 BC1_RC1+SO3_Ch600_Battery 1_Slide Right_Radial 2 (Y)

DUT: 091629

Communication System: CDMA ; Frequency: 1880 MHz;Duty Cycle: 1:1

Medium: Air Medium parameters used: $\sigma = 0$ mho/m, $\epsilon_r = 1$; $\rho = 1$ kg/m³

Ambient Temperature : 22.4 °C

DASY4 Configuration:

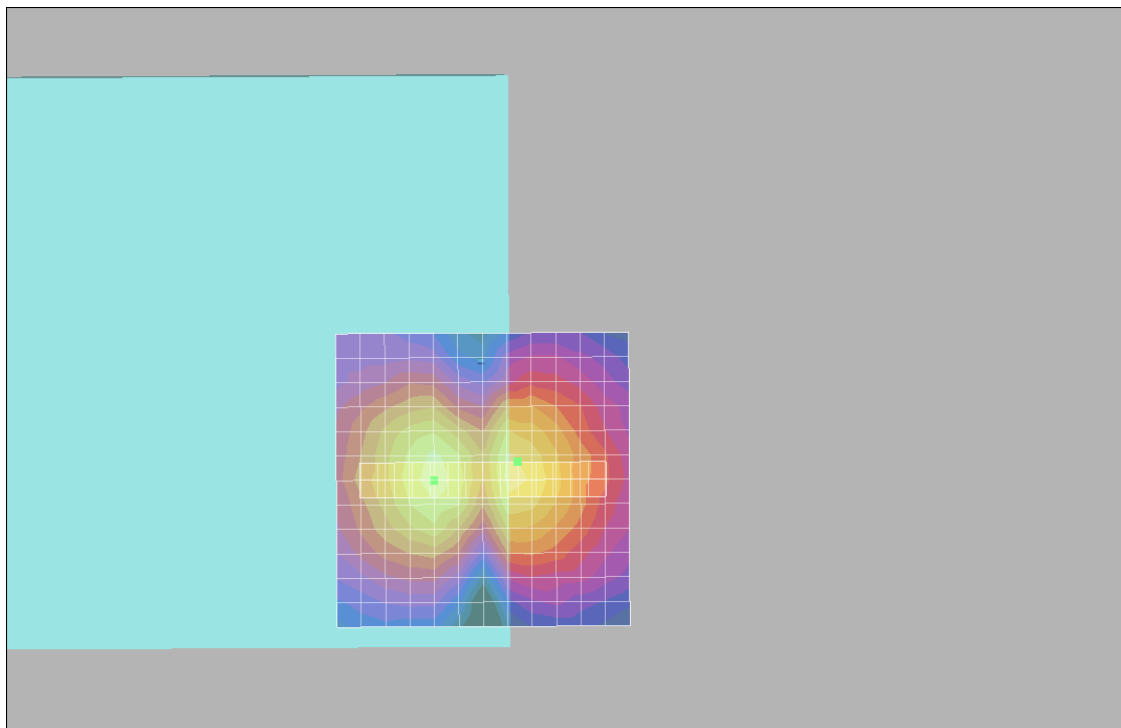
- Probe: AM1DV2 - 1038; ; Calibrated: 2010/1/21
- Sensor-Surface: 0mm (Fix Surface)
- Electronics: DAE3 Sn577; Calibrated: 2010/8/18
- Phantom: HAC Test Arch with AMCC; Type: SD HAC P01 BA;
- Measurement SW: DASY4, V4.7 Build 80; Postprocessing SW: SEMCAD, V1.8 Build 186

Scans/y (transversal) fine 3mm 6 x 42/ABM SNR(x,y,z) (3x15x1):

ABM1/ABM2 = 34.2 dB

ABM1 comp = -3.45 dB A/m

Location: -3, 6, 3.7 mm



0 dB = 1.00A/m