

SAR Test Setup Photographs

Right Head Setup

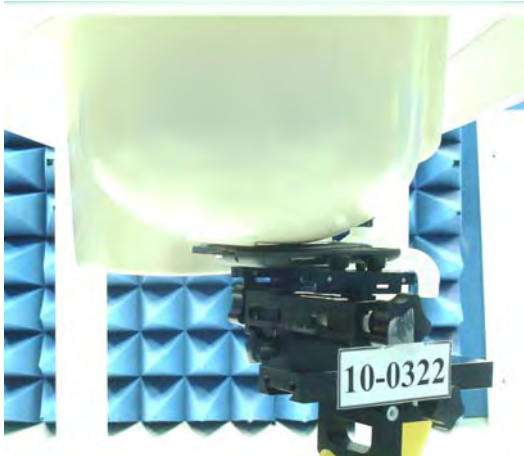


Figure 1. Right Head SAR Test Setup (Cheek)_Open

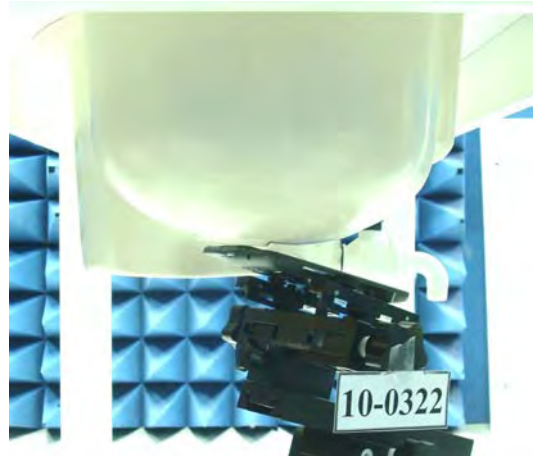


Figure 2. Right Head SAR Test Setup (Tilted)_Open

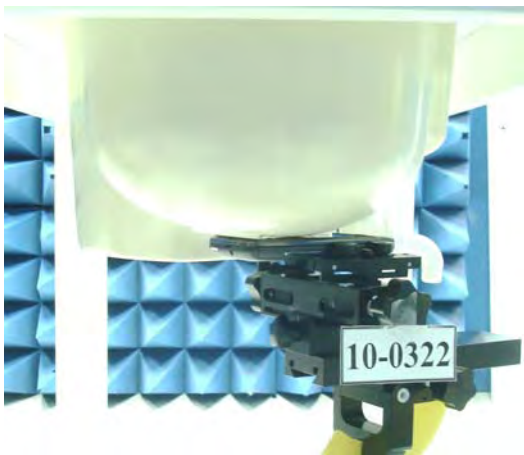


Figure 3. Right Head SAR Test Setup (Cheek)_Close

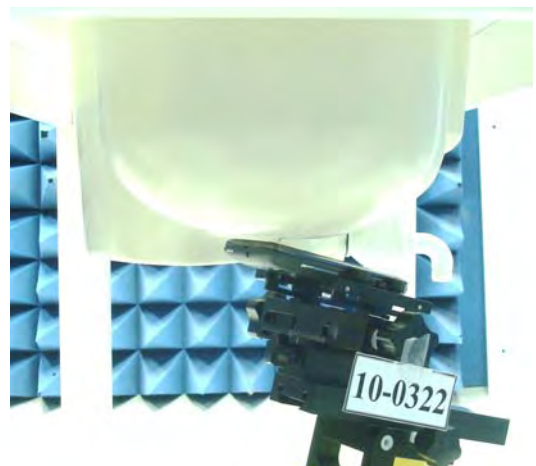
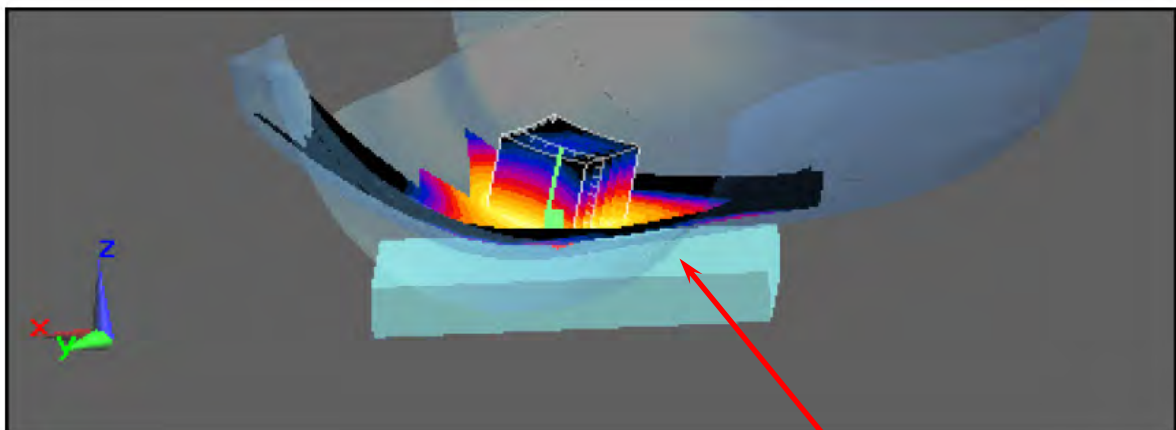
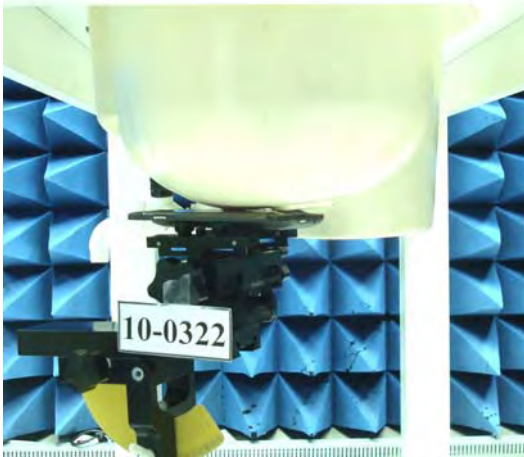


Figure 4. Right Head SAR Test Setup (Tilted)_Close



Right Cheek

Left Head Setup



**Figure 5. Left Head SAR Test Setup (Cheek)
_Open**

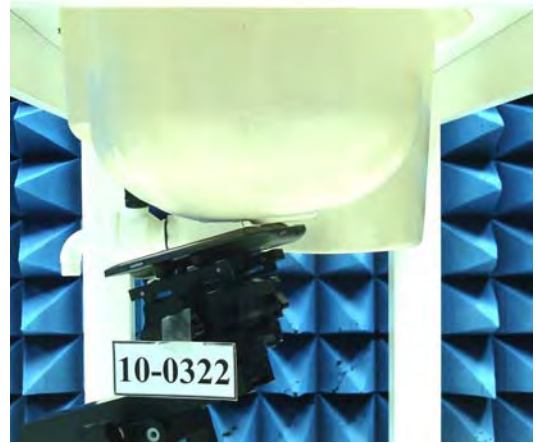
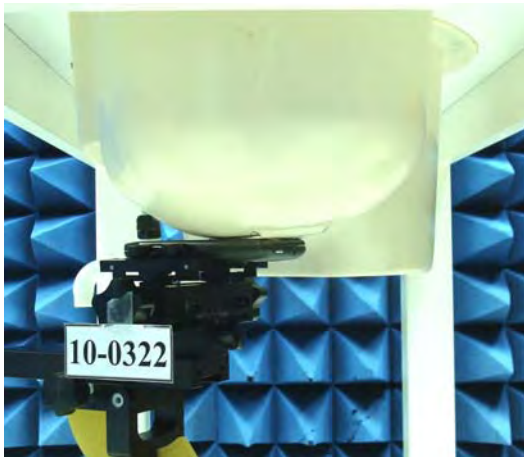


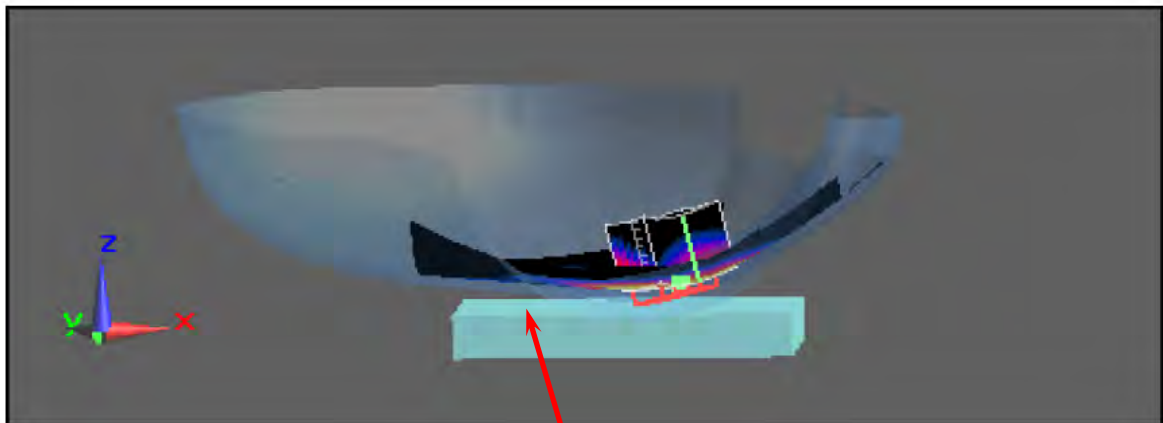
Figure 6. Left Head SAR Test Setup (Tilted) _Open



**Figure 7. Left Head SAR Test Setup (Cheek)
_Close**



**Figure 8. Left Head SAR Test Setup (Tilted)
_Close**



Left Cheek

Body Setup (15 mm separation to phantom)

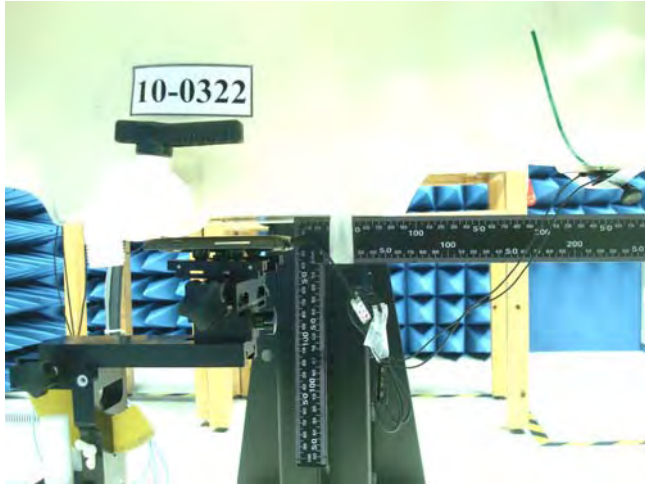


Figure 9. Body SAR Test Setup (Flat Section)_Open

Figure 10. Body SAR Test Setup (Flat Section)_Close

