

## SAR Test Setup Photographs

### Right Head Setup

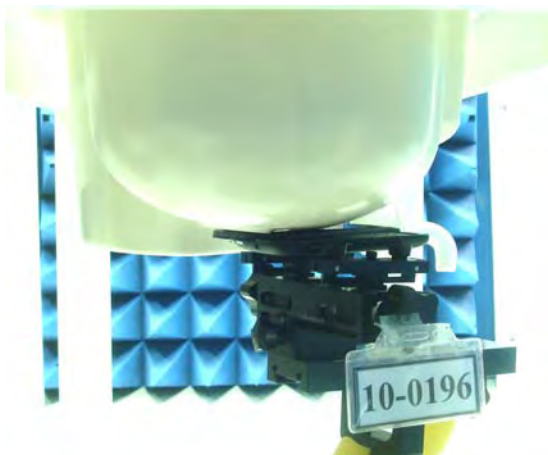


Figure 1. Right Head SAR Test Setup (Cheek)\_Open

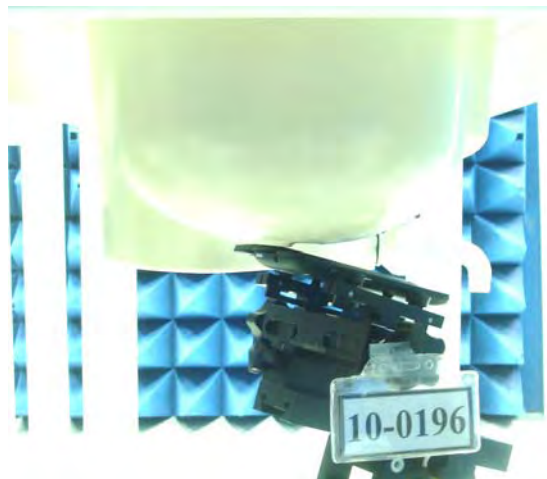


Figure 2. Right Head SAR Test Setup (Tilted)\_Open

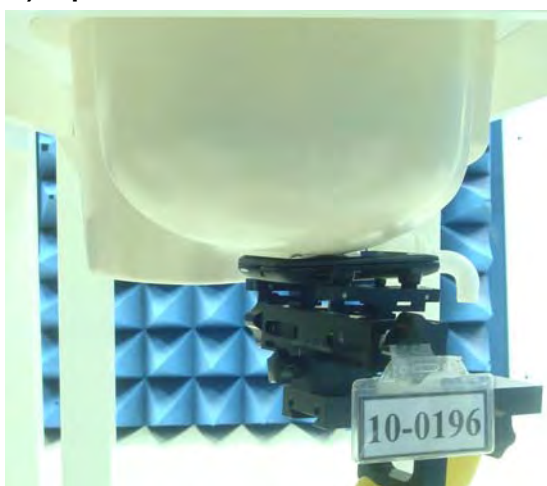
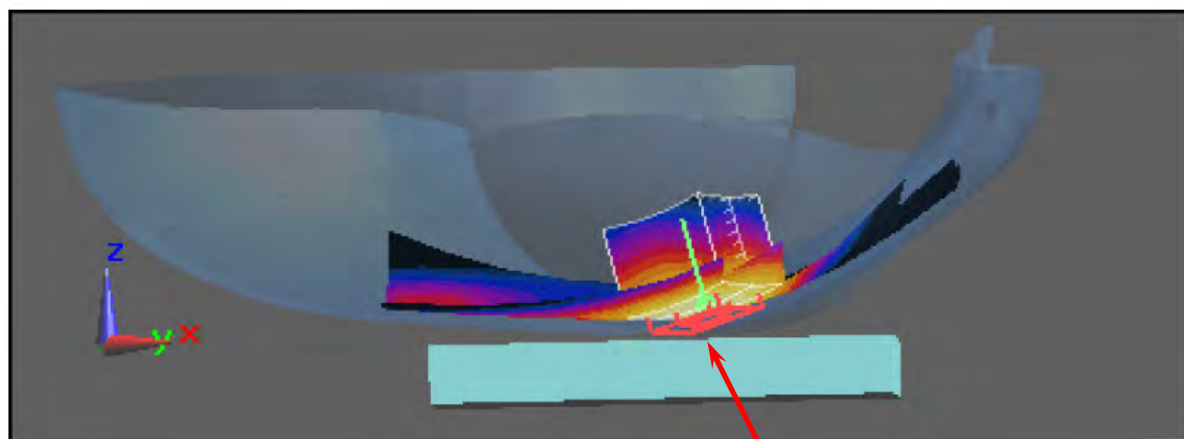


Figure 3. Right Head SAR Test Setup (Cheek)\_Close



Right Cheek

## Left Head Setup

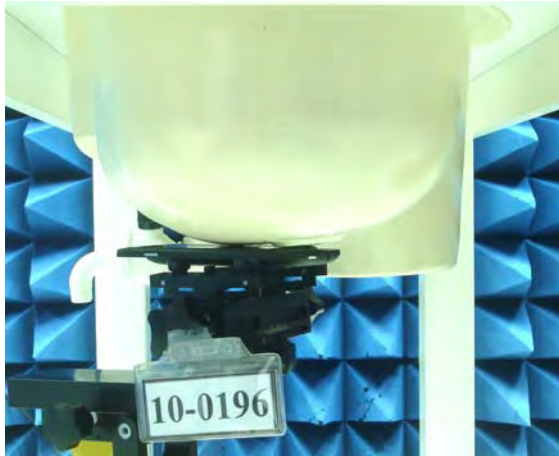


Figure 4. Left Head SAR Test Setup (Cheek)\_Open



Figure 5. Left Head SAR Test Setup (Tilted) \_Open

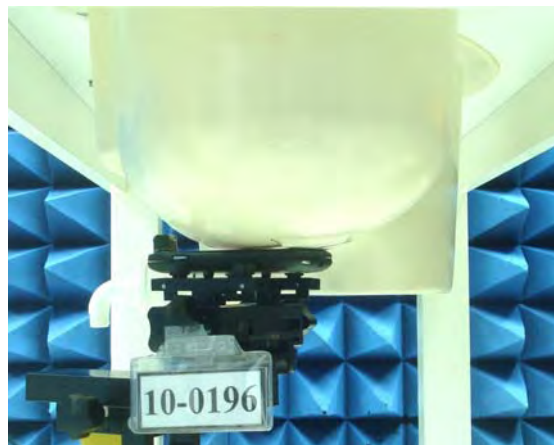
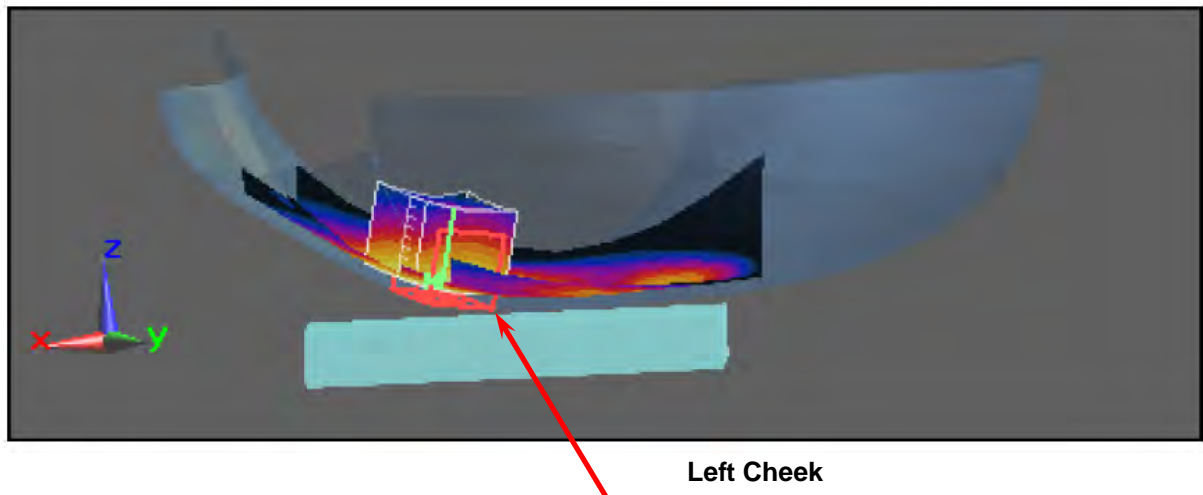
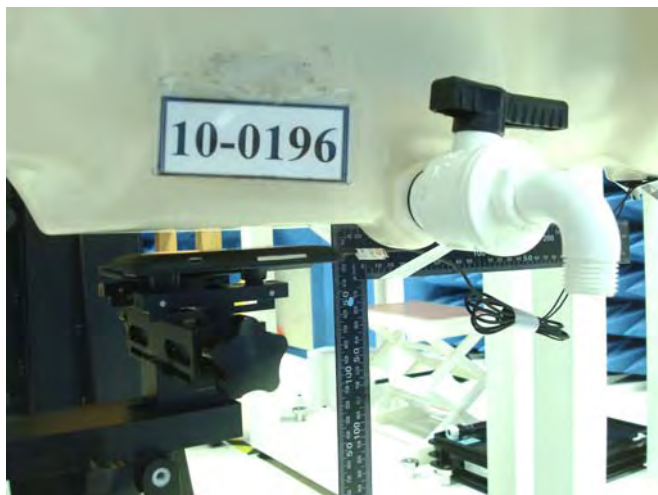


Figure 6. Left Head SAR Test Setup (Cheek)\_Close



**Body Setup (15 mm separation to phantom)**



**Figure 7. Body SAR Test Setup (Flat Section)\_Open**



**Figure 8. Body SAR Test Setup (Flat Section)\_Close**

