

SAR Test Setup Photographs

Right Head Setup

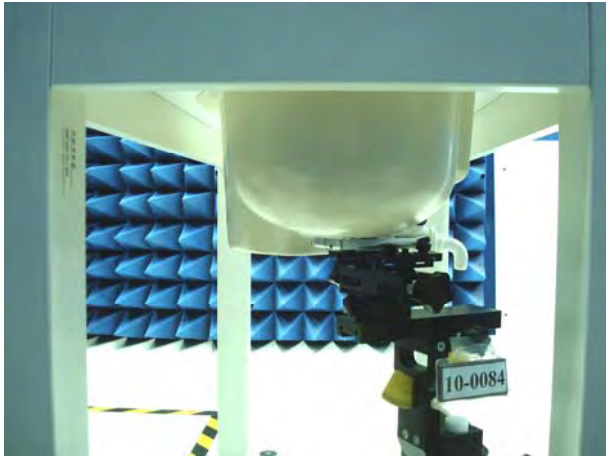


Figure 1. Right Head SAR Test Setup (Cheek)

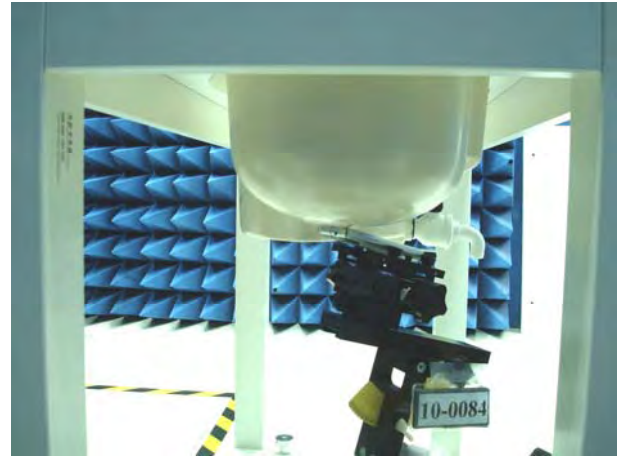
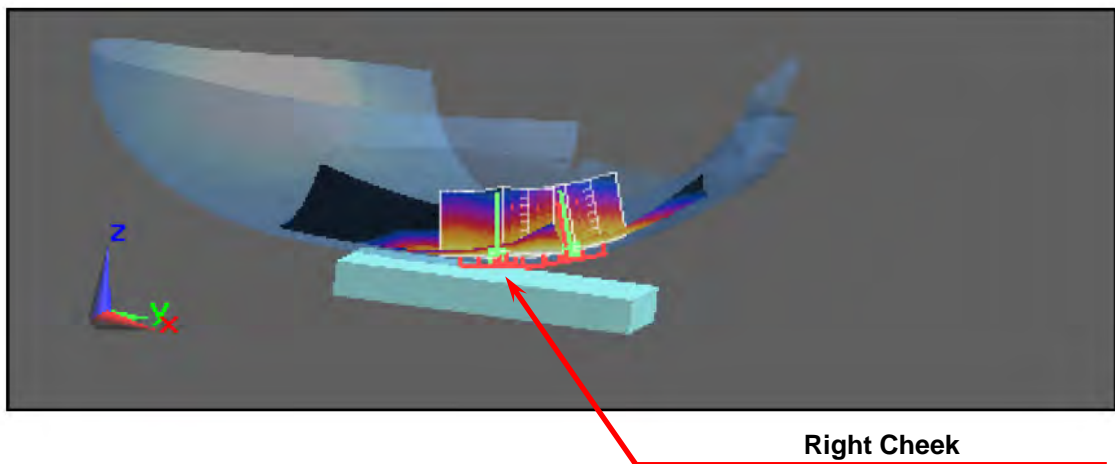


Figure 2. Right Head SAR Test Setup (Tilted)



Right Cheek

Left Head Setup

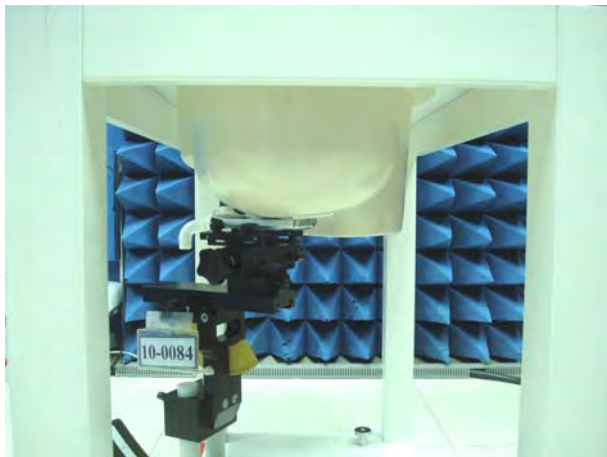


Figure 3. Left Head SAR Test Setup (Cheek)

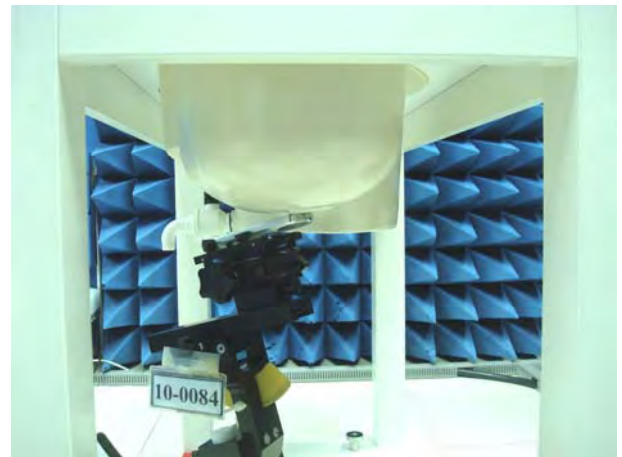
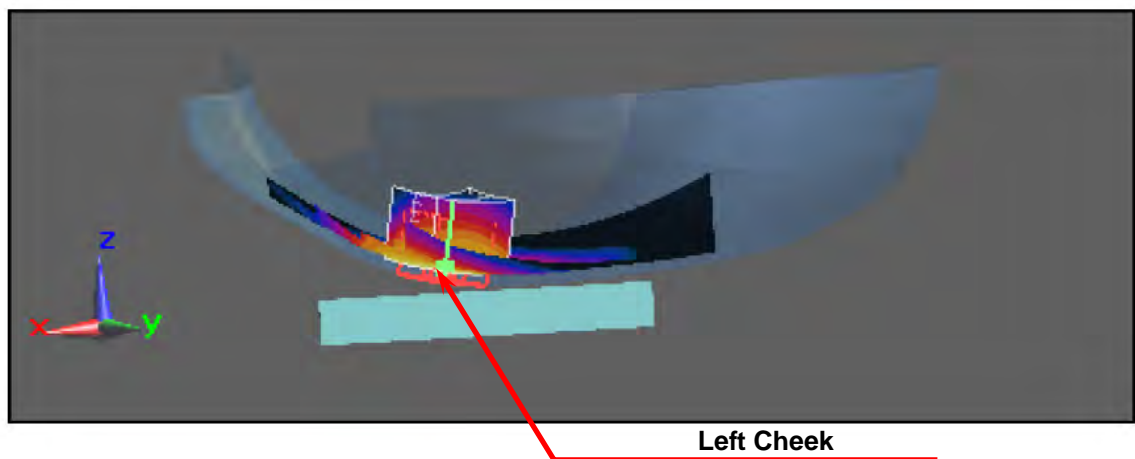


Figure 4. Left Head SAR Test Setup (Tilted)



Left Cheek

Body Setup (15 mm separation to phantom)

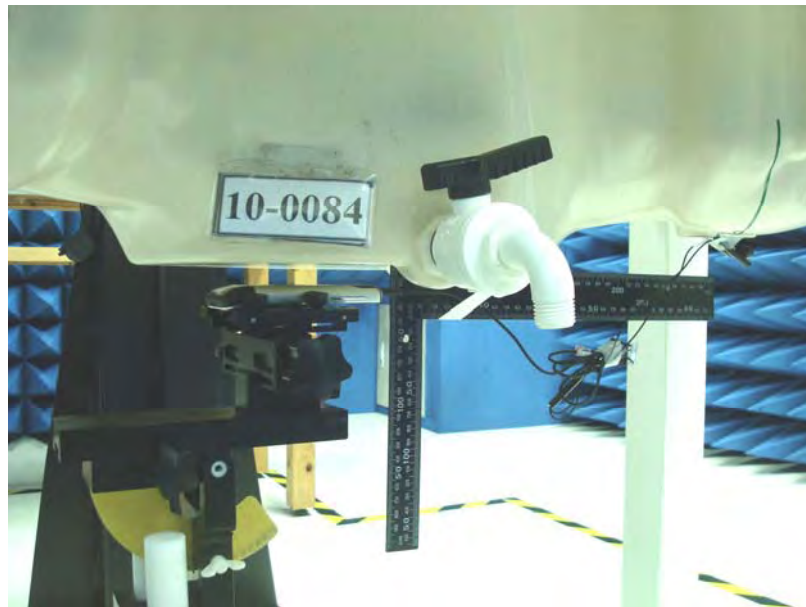
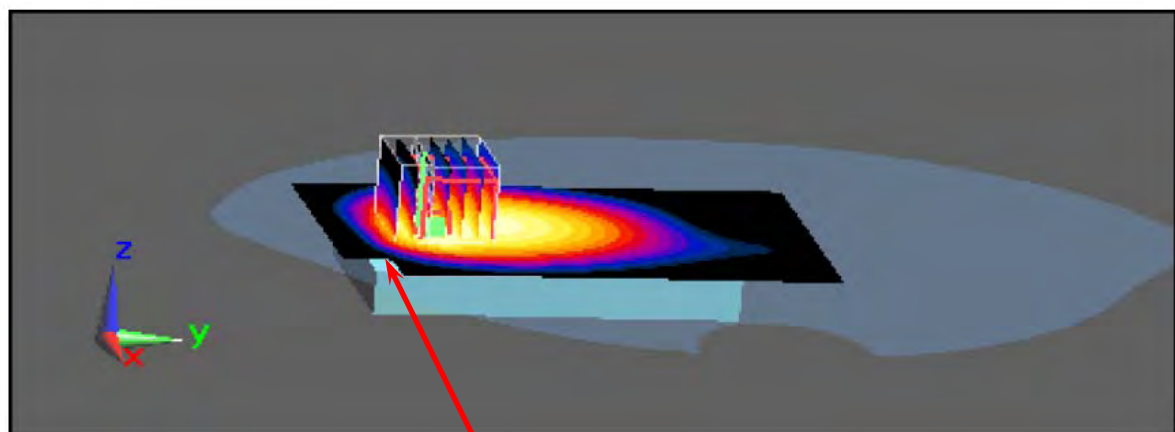


Figure 5. Body SAR Test Setup (Flat Section)



EUT Front side