

Test Laboratory: Sporton

Date: 2009/12/31

#01 T-Coil_CDMA2000 BC0_RC1+SO3_Ch384_Battery 1_Axial (Z)

DUT: 9D1711

Communication System: CDMA ; Frequency: 836.52 MHz; Duty Cycle: 1:1

Medium: Air Medium parameters used: $\sigma = 0$ mho/m, $\epsilon_r = 1$; $\rho = 1$ kg/m³

Ambient Temperature : 22.6 °C

DASY5 Configuration:

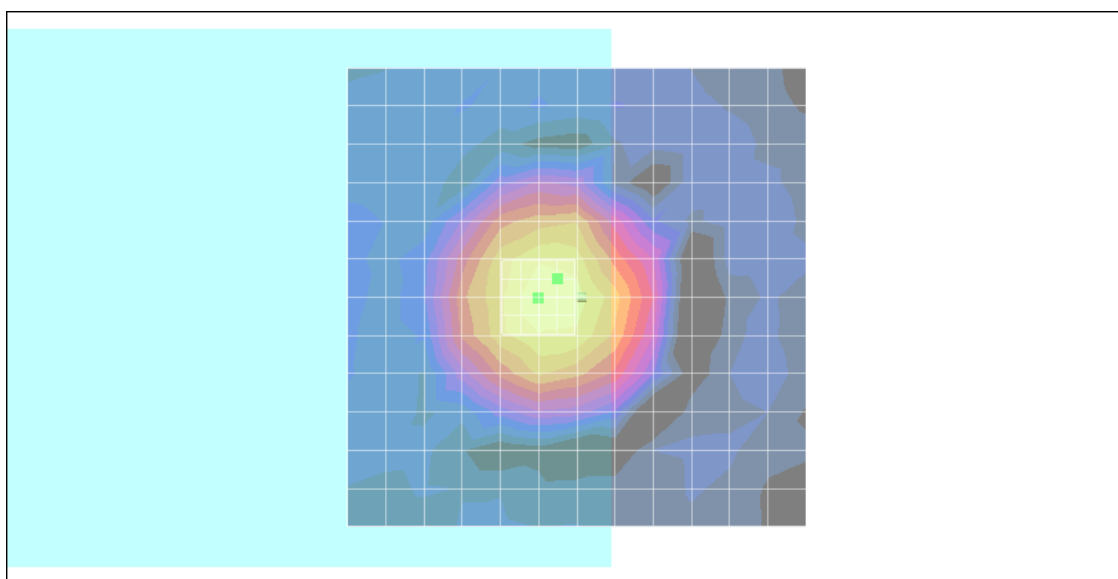
- Probe: AM1DV2 - 1038; ; Calibrated: 2009/1/12
- Sensor-Surface: 0mm (Fix Surface)
- Electronics: DAE4 Sn778; Calibrated: 2009/9/18
- Phantom: HAC Test Arch with AMCC; Type: SD HAC P01 BA;
- Measurement SW: DASY5, V5.0 Build 125; Postprocessing SW: SEMCAD, V1.8 Build 186

Scans/z (axial) fine 2mm 8 x 8/ABM SNR(x,y,z) (5x5x1):

ABM1/ABM2 = 33.3 dB

ABM1 comp = -6.87 dB A/m

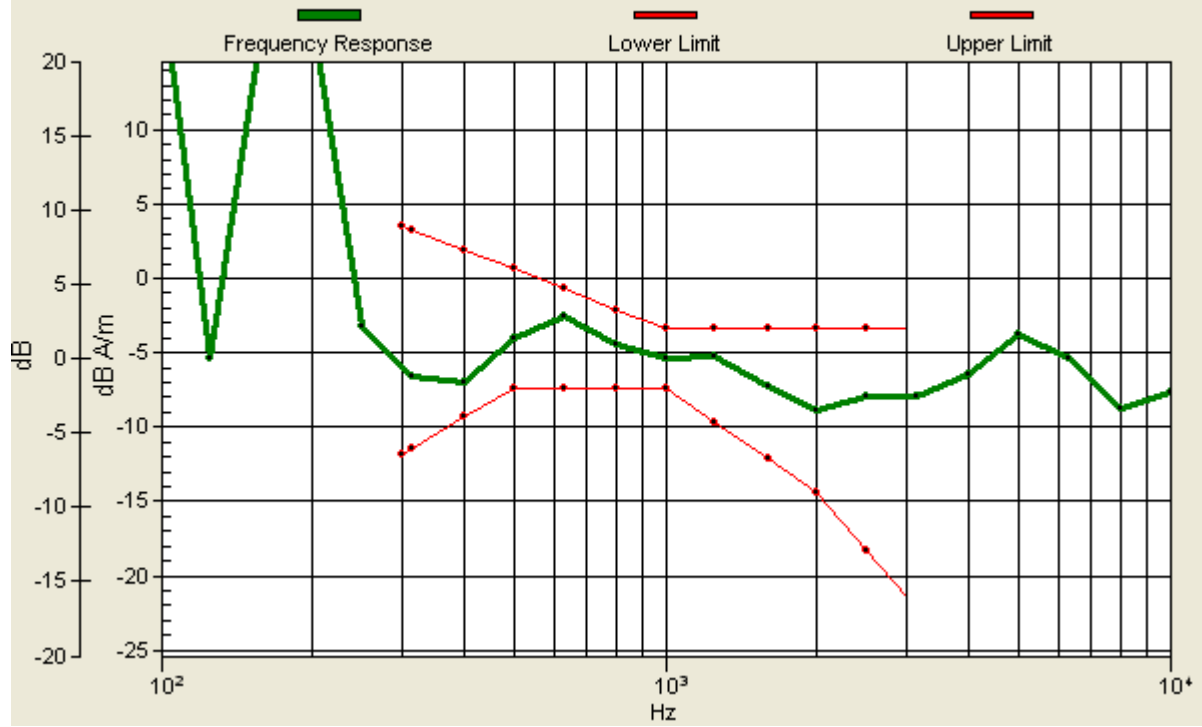
Location: 2.2, -2, 3.7 mm



0 dB = 1.00A/m

Scans/z (axial) wideband at best S/N/ABM Freq Resp(x,y,z,f)

Loc: 2.2, -2, 3.7 mm Diff: 1.81dB



Test Laboratory: Sporton

Date: 2009/12/31

#01 T-Coil_CDMA2000 BC0_RC1+SO3_Ch384_Battery 1_Radial 1 (X)

DUT: 9D1711

Communication System: CDMA ; Frequency: 836.52 MHz;Duty Cycle: 1:1

Medium: Air Medium parameters used: $\sigma = 0$ mho/m, $\epsilon_r = 1$; $\rho = 1$ kg/m³

Ambient Temperature : 22.6 °C

DASY5 Configuration:

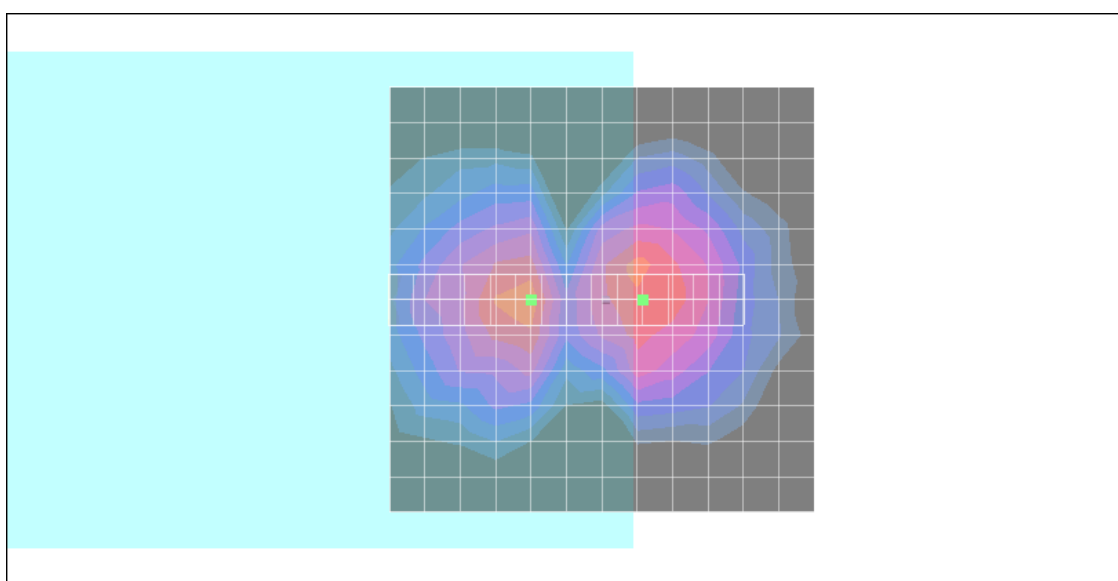
- Probe: AM1DV2 - 1038; ; Calibrated: 2009/1/12
- Sensor-Surface: 0mm (Fix Surface)
- Electronics: DAE4 Sn778; Calibrated: 2009/9/18
- Phantom: HAC Test Arch with AMCC; Type: SD HAC P01 BA;
- Measurement SW: DASY5, V5.0 Build 125; Postprocessing SW: SEMCAD, V1.8 Build 186

Scans/x (longitudinal) fine 3mm 42 x 6/ABM SNR(x,y,z) (15x3x1):

ABM1/ABM2 = 24.9 dB

ABM1 comp = -15.3 dB A/m

Location: -4.8, 0, 3.7 mm



0 dB = 1.00A/m

Test Laboratory: Sporton

Date: 2009/12/31

#01 T-Coil_CDMA2000 BC0_RC1+SO3_Ch384_Battery 1_Radial 2 (Y)

DUT: 9D1711

Communication System: CDMA ; Frequency: 836.52 MHz;Duty Cycle: 1:1

Medium: Air Medium parameters used: $\sigma = 0$ mho/m, $\epsilon_r = 1$; $\rho = 1$ kg/m³

Ambient Temperature : 22.6 °C

DASY5 Configuration:

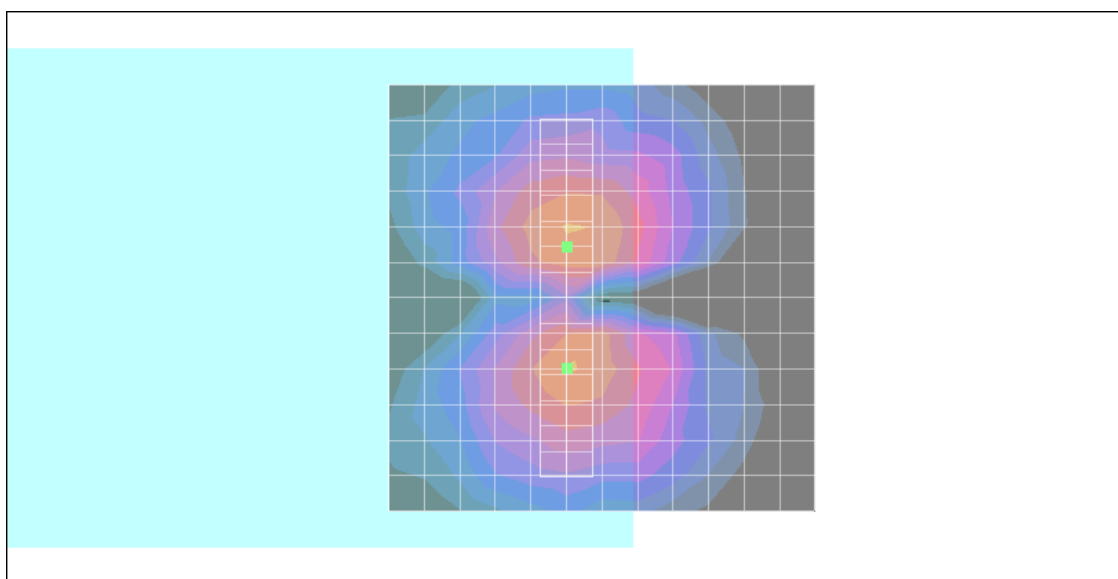
- Probe: AM1DV2 - 1038; ; Calibrated: 2009/1/12
- Sensor-Surface: 0mm (Fix Surface)
- Electronics: DAE4 Sn778; Calibrated: 2009/9/18
- Phantom: HAC Test Arch with AMCC; Type: SD HAC P01 BA;
- Measurement SW: DASY5, V5.0 Build 125; Postprocessing SW: SEMCAD, V1.8 Build 186

Scans/y (transversal) fine 3mm 6 x 42/ABM SNR(x,y,z) (3x15x1):

ABM1/ABM2 = 28.2 dB

ABM1 comp = -14.1 dB A/m

Location: 4.2, -6, 3.7 mm



0 dB = 1.00A/m

Test Laboratory: Sporton

Date: 2009/12/31

#02 T-Coil_CDMA2000 BC0_RC1+SO3_Ch1013_Battery 1_Axial (Z)

DUT: 9D1711

Communication System: CDMA ; Frequency: 824.7 MHz; Duty Cycle: 1:1

Medium: Air Medium parameters used: $\sigma = 0$ mho/m, $\epsilon_r = 1$; $\rho = 1$ kg/m³

Ambient Temperature : 22.6 °C

DASY5 Configuration:

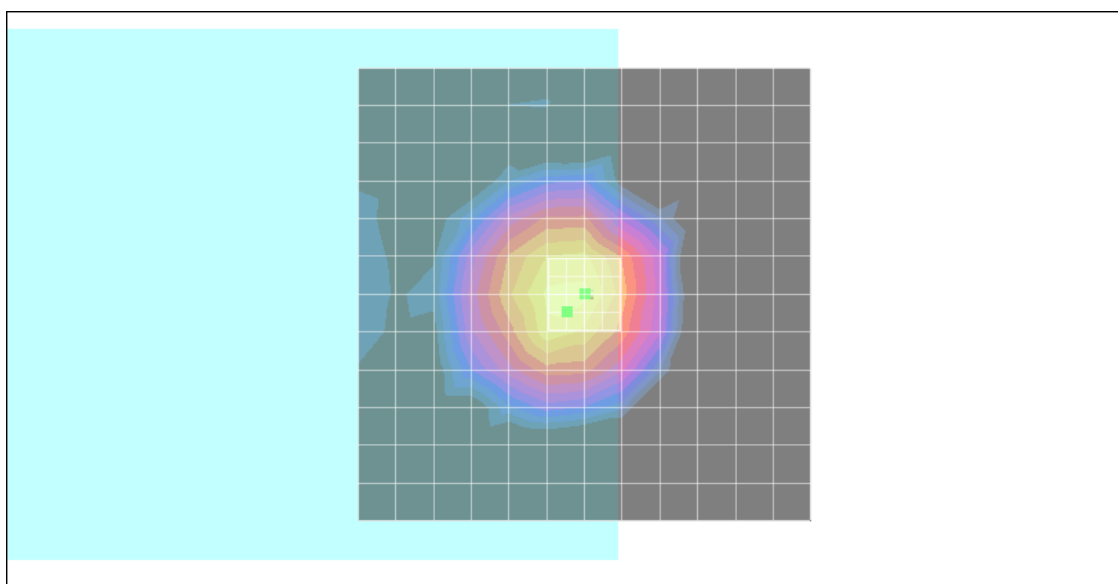
- Probe: AM1DV2 - 1038; ; Calibrated: 2009/1/12
- Sensor-Surface: 0mm (Fix Surface)
- Electronics: DAE4 Sn778; Calibrated: 2009/9/18
- Phantom: HAC Test Arch with AMCC; Type: SD HAC P01 BA;
- Measurement SW: DASY5, V5.0 Build 125; Postprocessing SW: SEMCAD, V1.8 Build 186

Scans/z (axial) fine 2mm 8 x 8/ABM SNR(x,y,z) (5x5x1):

ABM1/ABM2 = 30.9 dB

ABM1 comp = -7.26 dB A/m

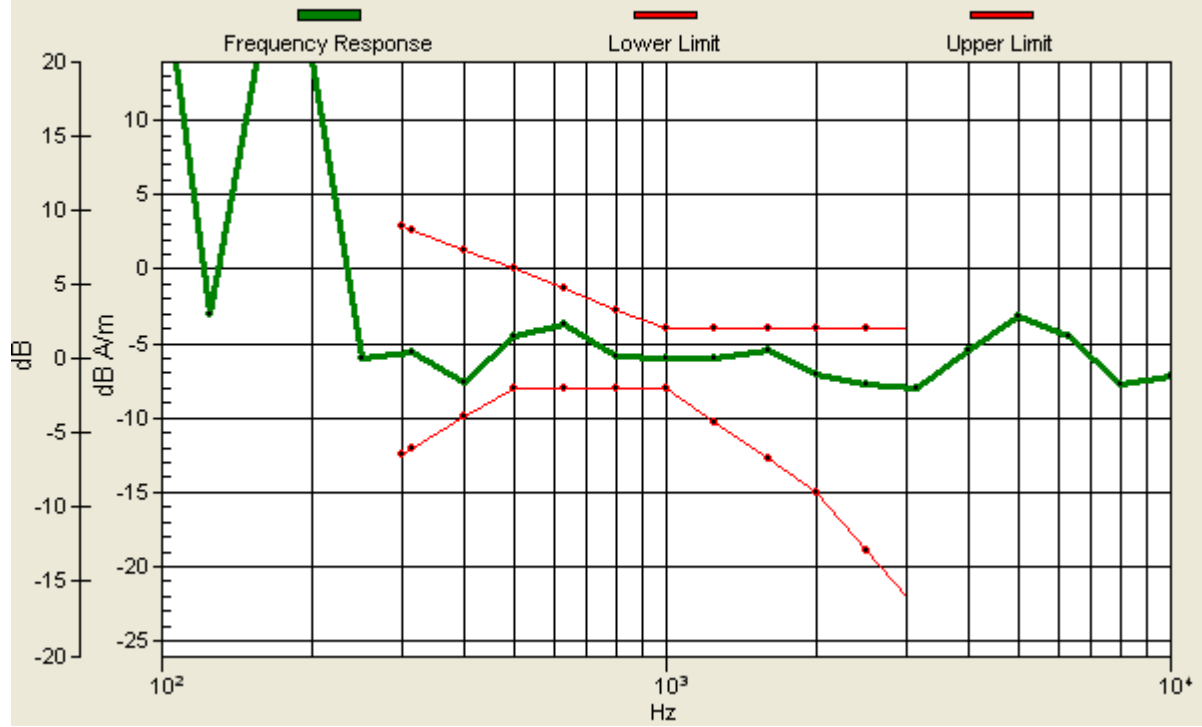
Location: 2, 2, 3.7 mm



0 dB = 1.00A/m

Scans/z (axial) wideband at best S/N/ABM Freq Resp(x,y,z,f)

Loc: 2, 2, 3.7 mm Diff: 1.45dB



Test Laboratory: Sporton

Date: 2009/12/31

#02 T-Coil_CDMA2000 BC0_RC1+SO3_Ch1013_Battery 1_Radial 1 (X)

DUT: 9D1711

Communication System: CDMA ; Frequency: 824.7 MHz; Duty Cycle: 1:1

Medium: Air Medium parameters used: $\sigma = 0$ mho/m, $\epsilon_r = 1$; $\rho = 1$ kg/m³

Ambient Temperature : 22.6 °C

DASY5 Configuration:

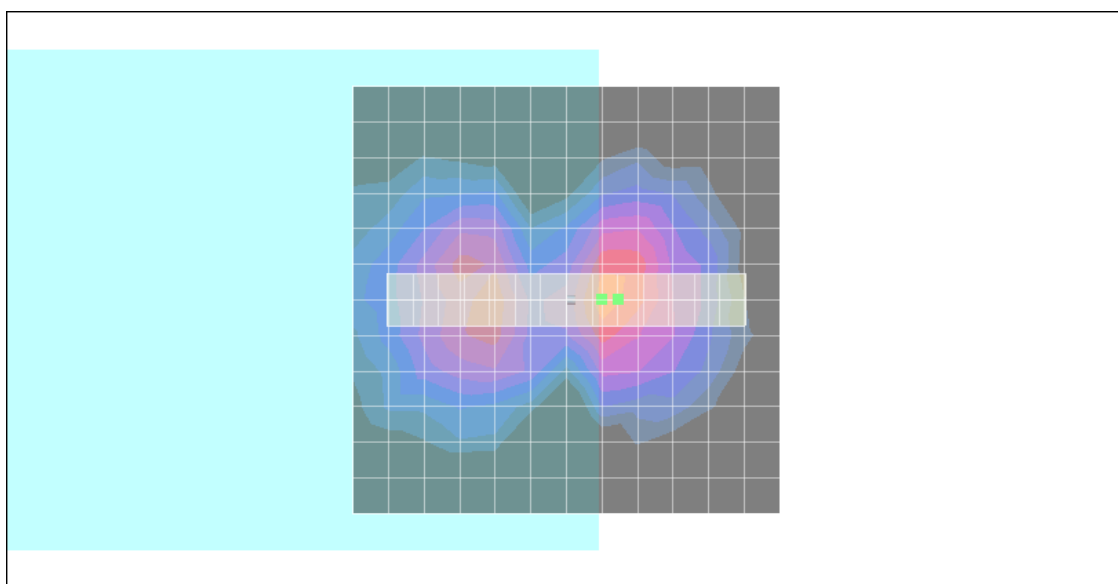
- Probe: AM1DV2 - 1038; ; Calibrated: 2009/1/12
- Sensor-Surface: 0mm (Fix Surface)
- Electronics: DAE4 Sn778; Calibrated: 2009/9/18
- Phantom: HAC Test Arch with AMCC; Type: SD HAC P01 BA;
- Measurement SW: DASY5, V5.0 Build 125; Postprocessing SW: SEMCAD, V1.8 Build 186

Scans/x (longitudinal) fine 3mm 42 x 6/ABM SNR(x,y,z) (15x3x1):

ABM1/ABM2 = 24.0 dB

ABM1 comp = -16.3 dB A/m

Location: -6, 0, 3.7 mm



0 dB = 1.00A/m

Test Laboratory: Sporton

Date: 2009/12/31

#02 T-Coil_CDMA2000 BC0_RC1+SO3_Ch1013_Battery 1_Radial 2 (Y)

DUT: 9D1711

Communication System: CDMA ; Frequency: 824.7 MHz; Duty Cycle: 1:1

Medium: Air Medium parameters used: $\sigma = 0$ mho/m, $\epsilon_r = 1$; $\rho = 1$ kg/m³

Ambient Temperature : 22.6 °C

DASY5 Configuration:

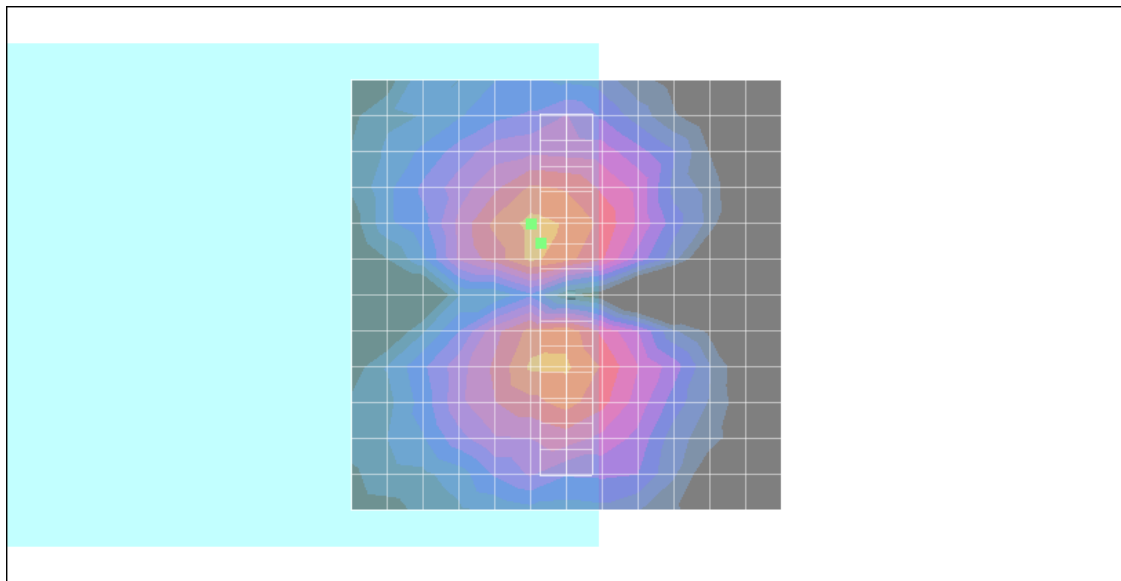
- Probe: AM1DV2 - 1038; ; Calibrated: 2009/1/12
- Sensor-Surface: 0mm (Fix Surface)
- Electronics: DAE4 Sn778; Calibrated: 2009/9/18
- Phantom: HAC Test Arch with AMCC; Type: SD HAC P01 BA;
- Measurement SW: DASY5, V5.0 Build 125; Postprocessing SW: SEMCAD, V1.8 Build 186

Scans/y (transversal) fine 3mm 6 x 42/ABM SNR(x,y,z) (3x15x1):

ABM1/ABM2 = 27.2 dB

ABM1 comp = -16.1 dB A/m

Location: 3, -6, 3.7 mm



0 dB = 1.00A/m

Test Laboratory: Sporton

Date: 2009/12/31

#03 T-Coil_CDMA2000 BC0_RC1+SO3_Ch777_Battery 1_Axial (Z)

DUT: 9D1711

Communication System: CDMA ; Frequency: 848.31 MHz; Duty Cycle: 1:1

Medium: Air Medium parameters used: $\sigma = 0$ mho/m, $\epsilon_r = 1$; $\rho = 1$ kg/m³

Ambient Temperature : 22.6 °C

DASY5 Configuration:

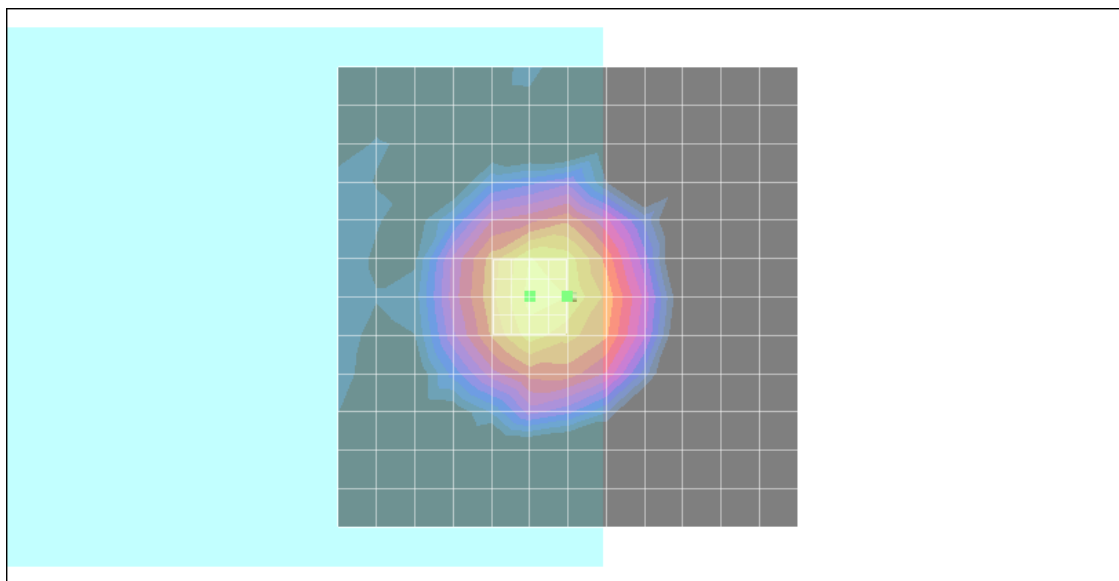
- Probe: AM1DV2 - 1038; ; Calibrated: 2009/1/12
- Sensor-Surface: 0mm (Fix Surface)
- Electronics: DAE4 Sn778; Calibrated: 2009/9/18
- Phantom: HAC Test Arch with AMCC; Type: SD HAC P01 BA;
- Measurement SW: DASY5, V5.0 Build 125; Postprocessing SW: SEMCAD, V1.8 Build 186

Scans/z (axial) fine 2mm 8 x 8/ABM SNR(x,y,z) (5x5x1):

ABM1/ABM2 = 32.3 dB

ABM1 comp = -6.39 dB A/m

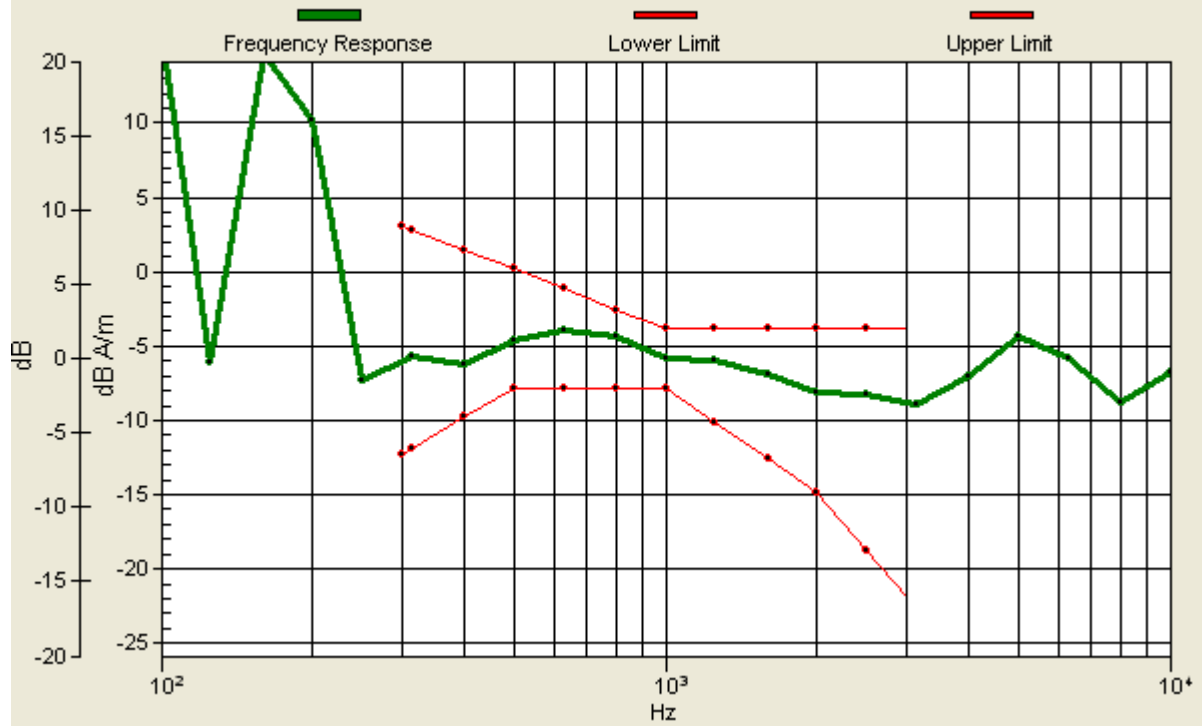
Location: 0.2, 0, 3.7 mm



0 dB = 1.00A/m

Scans/z (axial) wideband at best S/N/ABM Freq Resp(x,y,z,f)

Loc: 0.2, 0, 3.7 mm Diff: 1.74dB



Test Laboratory: Sporton

Date: 2009/12/31

#03 T-Coil_CDMA2000 BC0_RC1+SO3_Ch777_Battery 1_Radial 1 (X)

DUT: 9D1711

Communication System: CDMA ; Frequency: 848.31 MHz;Duty Cycle: 1:1

Medium: Air Medium parameters used: $\sigma = 0$ mho/m, $\epsilon_r = 1$; $\rho = 1$ kg/m³

Ambient Temperature : 22.6 °C

DASY5 Configuration:

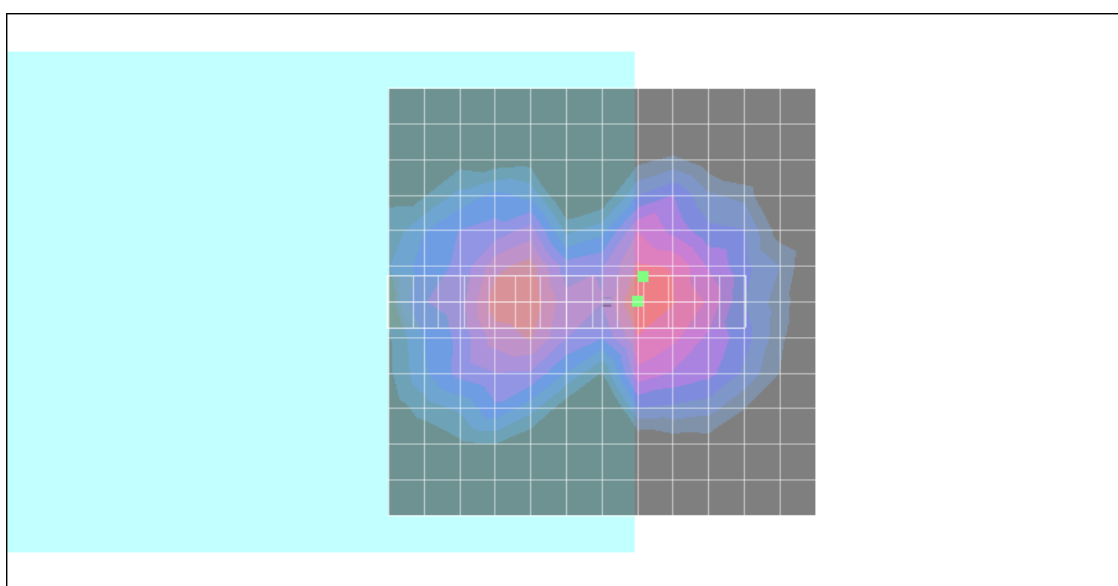
- Probe: AM1DV2 - 1038; ; Calibrated: 2009/1/12
- Sensor-Surface: 0mm (Fix Surface)
- Electronics: DAE4 Sn778; Calibrated: 2009/9/18
- Phantom: HAC Test Arch with AMCC; Type: SD HAC P01 BA;
- Measurement SW: DASY5, V5.0 Build 125; Postprocessing SW: SEMCAD, V1.8 Build 186

Scans/x (longitudinal) fine 3mm 42 x 6/ABM SNR(x,y,z) (15x3x1):

ABM1/ABM2 = 24.1 dB

ABM1 comp = -15.7 dB A/m

Location: -4.8, -3, 3.7 mm



0 dB = 1.00A/m

Test Laboratory: Sporton

Date: 2009/12/31

#03 T-Coil_CDMA2000 BC0_RC1+SO3_Ch777_Battery 1_Radial 2 (Y)

DUT: 9D1711

Communication System: CDMA ; Frequency: 848.31 MHz;Duty Cycle: 1:1

Medium: Air Medium parameters used: $\sigma = 0$ mho/m, $\epsilon_r = 1$; $\rho = 1$ kg/m³

Ambient Temperature : 22.6 °C

DASY5 Configuration:

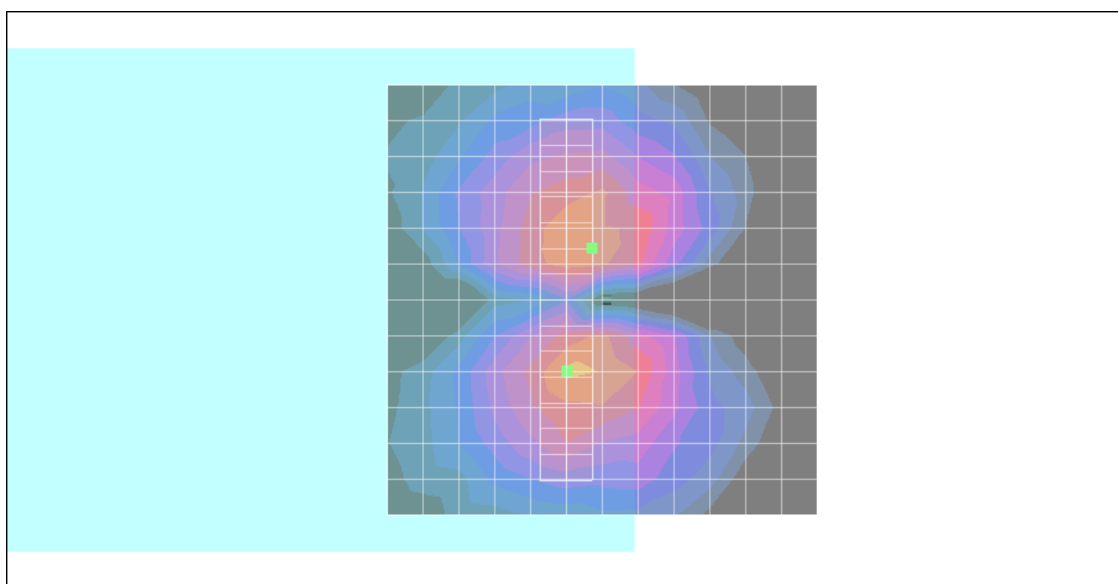
- Probe: AM1DV2 - 1038; ; Calibrated: 2009/1/12
- Sensor-Surface: 0mm (Fix Surface)
- Electronics: DAE4 Sn778; Calibrated: 2009/9/18
- Phantom: HAC Test Arch with AMCC; Type: SD HAC P01 BA;
- Measurement SW: DASY5, V5.0 Build 125; Postprocessing SW: SEMCAD, V1.8 Build 186

Scans/y (transversal) fine 3mm 6 x 42/ABM SNR(x,y,z) (3x15x1):

ABM1/ABM2 = 28.2 dB

ABM1 comp = -15.5 dB A/m

Location: 1.2, -6, 3.7 mm



0 dB = 1.00A/m

Test Laboratory: Sporton

Date: 2009/12/31

#04 T-Coil_CDMA2000 BC0_RC1+SO3_Ch1013_Battery 2_Axial (Z)

DUT: 9D1711

Communication System: CDMA ; Frequency: 824.7 MHz;Duty Cycle: 1:1

Medium: Air Medium parameters used: $\sigma = 0$ mho/m, $\epsilon_r = 1$; $\rho = 1$ kg/m³

Ambient Temperature : 22.6 °C

DASY5 Configuration:

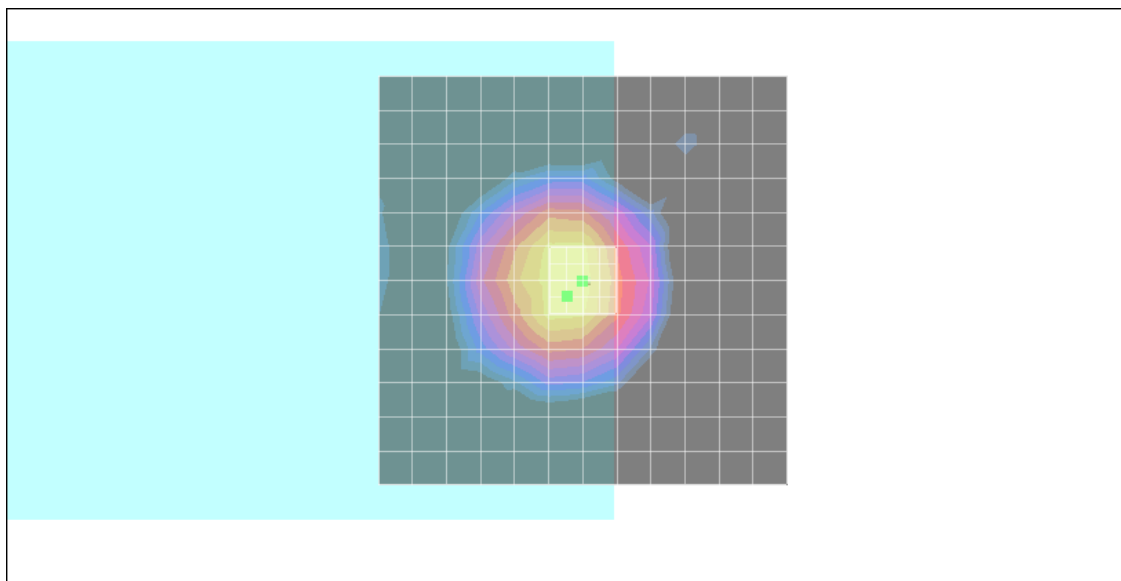
- Probe: AM1DV2 - 1038; ; Calibrated: 2009/1/12
- Sensor-Surface: 0mm (Fix Surface)
- Electronics: DAE4 Sn778; Calibrated: 2009/9/18
- Phantom: HAC Test Arch with AMCC; Type: SD HAC P01 BA;
- Measurement SW: DASY5, V5.0 Build 125; Postprocessing SW: SEMCAD, V1.8 Build 186

Scans/z (axial) fine 2mm 8 x 8/ABM SNR(x,y,z) (5x5x1):

ABM1/ABM2 = 31.3 dB

ABM1 comp = -6.49 dB A/m

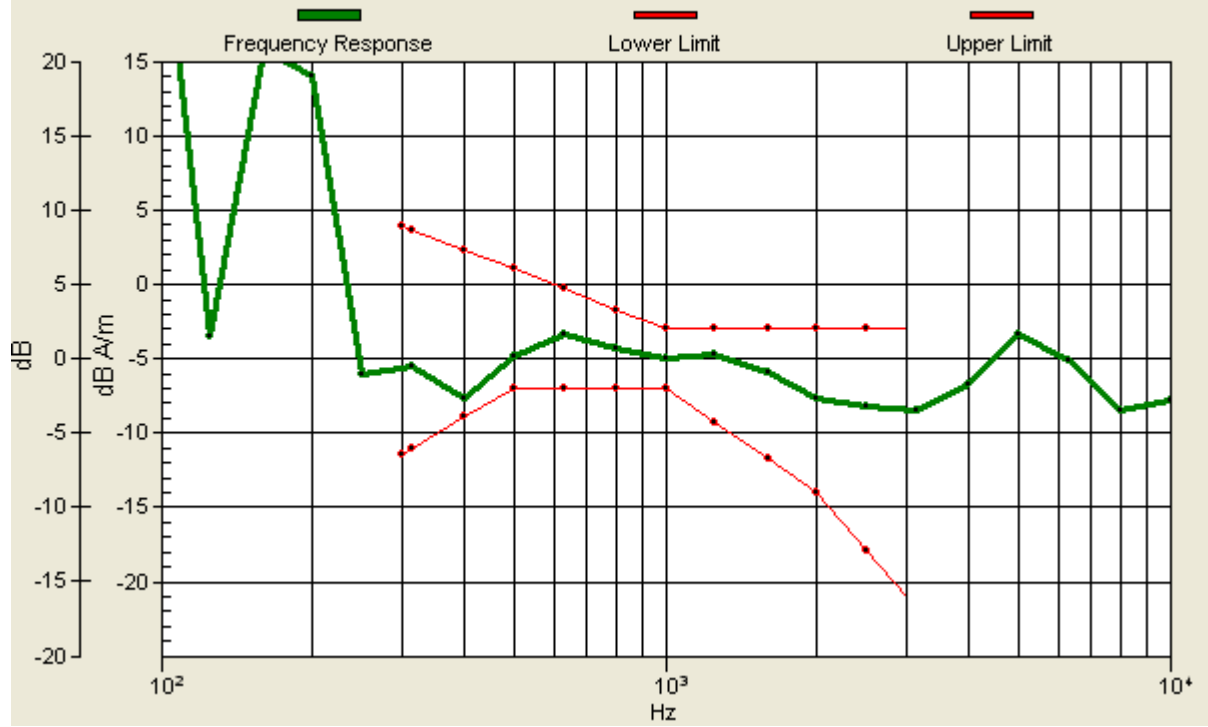
Location: 2, 2, 3.7 mm



0 dB = 1.00A/m

Scans/z (axial) wideband at best S/N/ABM Freq Resp(x,y,z,f)

Loc: 2, 2, 3.7 mm Diff: 1.22dB



Test Laboratory: Sporton

Date: 2009/12/31

#04 T-Coil_CDMA2000 BC0_RC1+SO3_Ch1013_Battery 2_Radial 1 (X)

DUT: 9D1711

Communication System: CDMA ; Frequency: 824.7 MHz;Duty Cycle: 1:1

Medium: Air Medium parameters used: $\sigma = 0$ mho/m, $\epsilon_r = 1$; $\rho = 1$ kg/m³

Ambient Temperature : 22.6 °C

DASY5 Configuration:

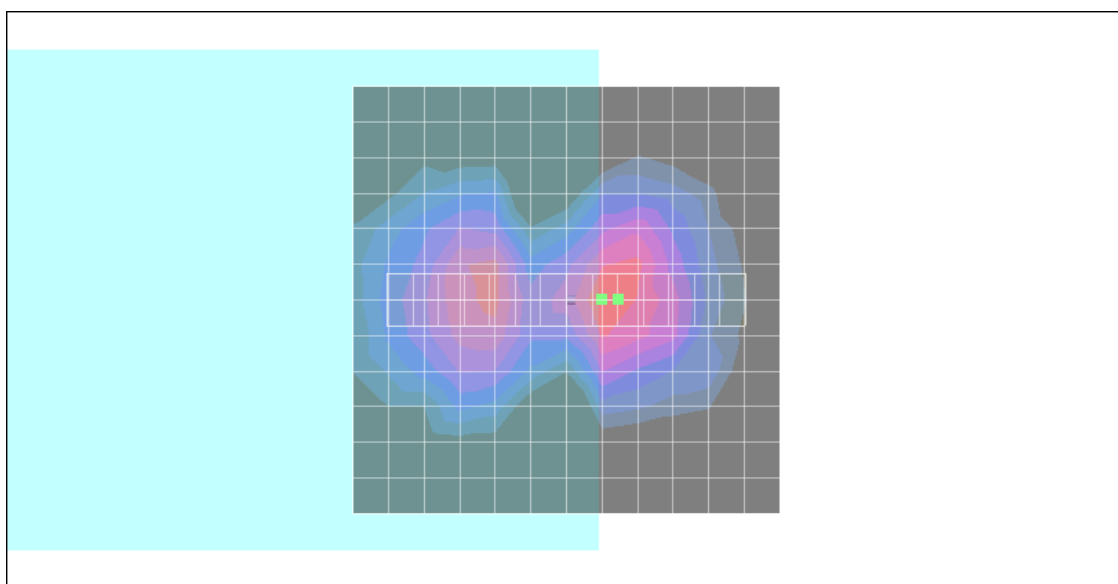
- Probe: AM1DV2 - 1038; ; Calibrated: 2009/1/12
- Sensor-Surface: 0mm (Fix Surface)
- Electronics: DAE4 Sn778; Calibrated: 2009/9/18
- Phantom: HAC Test Arch with AMCC; Type: SD HAC P01 BA;
- Measurement SW: DASY5, V5.0 Build 125; Postprocessing SW: SEMCAD, V1.8 Build 186

Scans/x (longitudinal) fine 3mm 42 x 6/ABM SNR(x,y,z) (15x3x1):

ABM1/ABM2 = 24.0 dB

ABM1 comp = -15.9 dB A/m

Location: -6, 0, 3.7 mm



0 dB = 1.00A/m

Test Laboratory: Sporton

Date: 2009/12/31

#04 T-Coil_CDMA2000 BC0_RC1+SO3_Ch1013_Battery 2_Radial 2 (Y)

DUT: 9D1711

Communication System: CDMA ; Frequency: 824.7 MHz;Duty Cycle: 1:1

Medium: Air Medium parameters used: $\sigma = 0$ mho/m, $\epsilon_r = 1$; $\rho = 1$ kg/m³

Ambient Temperature : 22.6 °C

DASY5 Configuration:

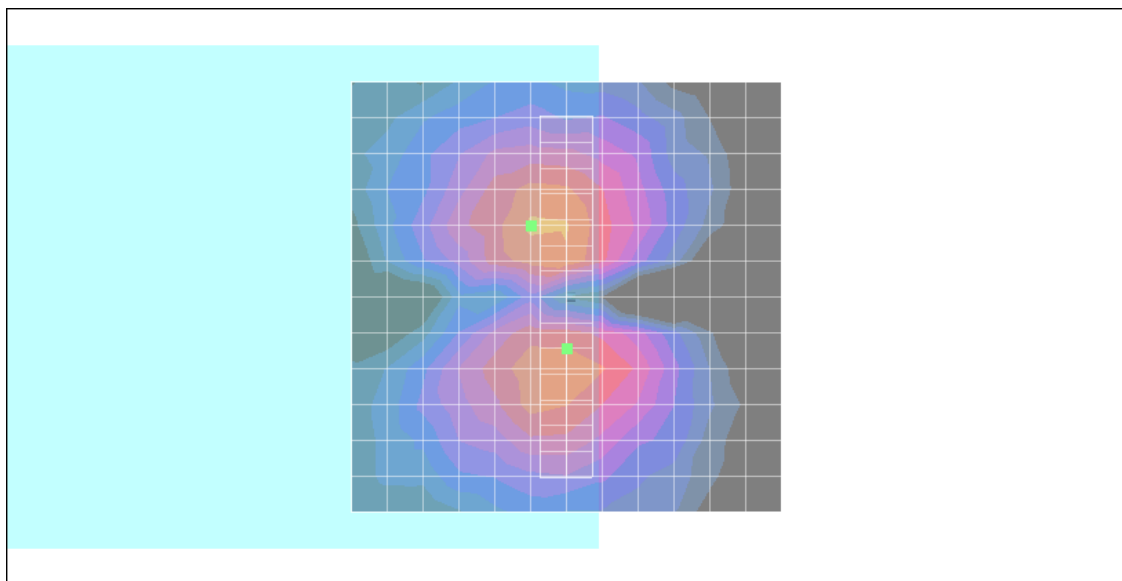
- Probe: AM1DV2 - 1038; ; Calibrated: 2009/1/12
- Sensor-Surface: 0mm (Fix Surface)
- Electronics: DAE4 Sn778; Calibrated: 2009/9/18
- Phantom: HAC Test Arch with AMCC; Type: SD HAC P01 BA;
- Measurement SW: DASY5, V5.0 Build 125; Postprocessing SW: SEMCAD, V1.8 Build 186

Scans/y (transversal) fine 3mm 6 x 42/ABM SNR(x,y,z) (3x15x1):

ABM1/ABM2 = 26.4 dB

ABM1 comp = -16.7 dB A/m

Location: 0, 6, 3.7 mm



0 dB = 1.00A/m

Test Laboratory: Sporton

Date: 2009/12/31

#05 T-Coil_CDMA2000 BC1_RC1+SO3_Ch25_Battery 1_Axial (Z)

DUT: 9D1711

Communication System: CDMA ; Frequency: 1851.25 MHz;Duty Cycle: 1:1

Medium: Air Medium parameters used: $\sigma = 0$ mho/m, $\epsilon_r = 1$; $\rho = 1$ kg/m³

Ambient Temperature : 22.6 °C

DASY5 Configuration:

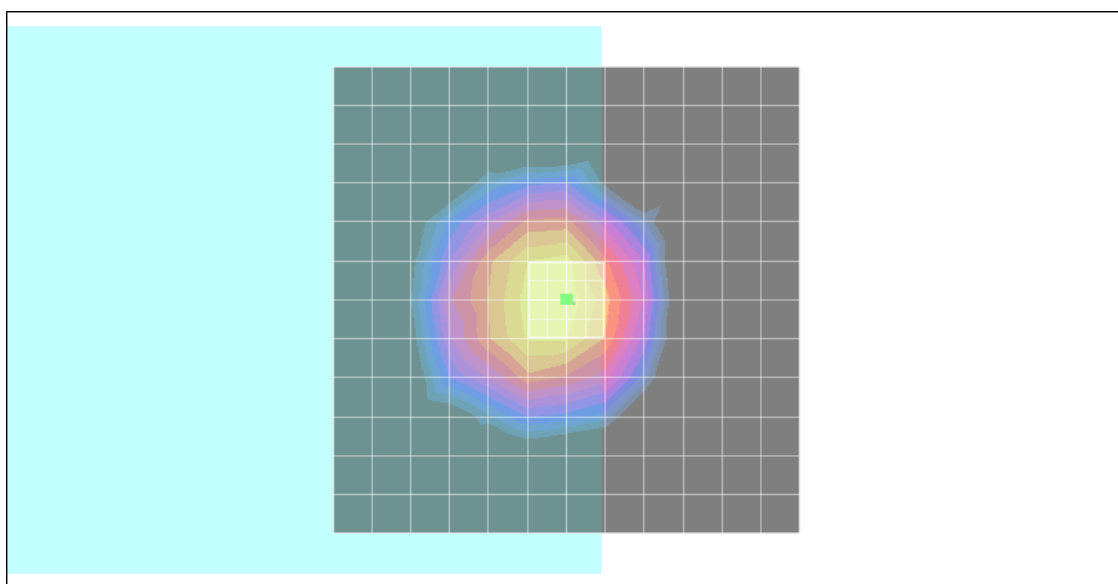
- Probe: AM1DV2 - 1038; ; Calibrated: 2009/1/12
- Sensor-Surface: 0mm (Fix Surface)
- Electronics: DAE4 Sn778; Calibrated: 2009/9/18
- Phantom: HAC Test Arch with AMCC; Type: SD HAC P01 BA;
- Measurement SW: DASY5, V5.0 Build 125; Postprocessing SW: SEMCAD, V1.8 Build 186

Scans/z (axial) fine 2mm 8 x 8/ABM SNR(x,y,z) (5x5x1):

ABM1/ABM2 = 29.7 dB

ABM1 comp = -8.50 dB A/m

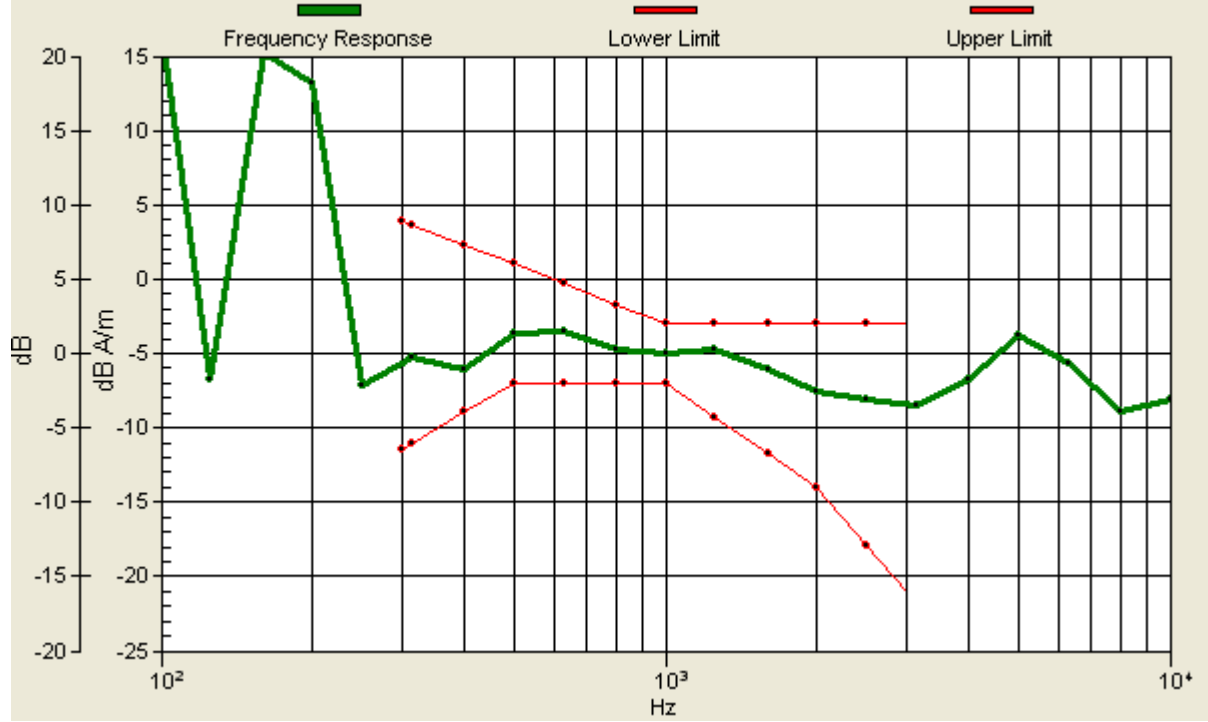
Location: 0, 0, 3.7 mm



0 dB = 1.00A/m

Scans/z (axial) wideband at best S/N/ABM Freq Resp(x,y,z,f)

Loc: 0, 0, 3.7 mm Diff: 1.76dB



Test Laboratory: Sporton

Date: 2009/12/31

#05 T-Coil_CDMA2000 BC1_RC1+SO3_Ch25_Battery 1_Radial 1 (X)

DUT: 9D1711

Communication System: CDMA ; Frequency: 1851.25 MHz; Duty Cycle: 1:1

Medium: Air Medium parameters used: $\sigma = 0$ mho/m, $\epsilon_r = 1$; $\rho = 1$ kg/m³

Ambient Temperature : 22.6 °C

DASY5 Configuration:

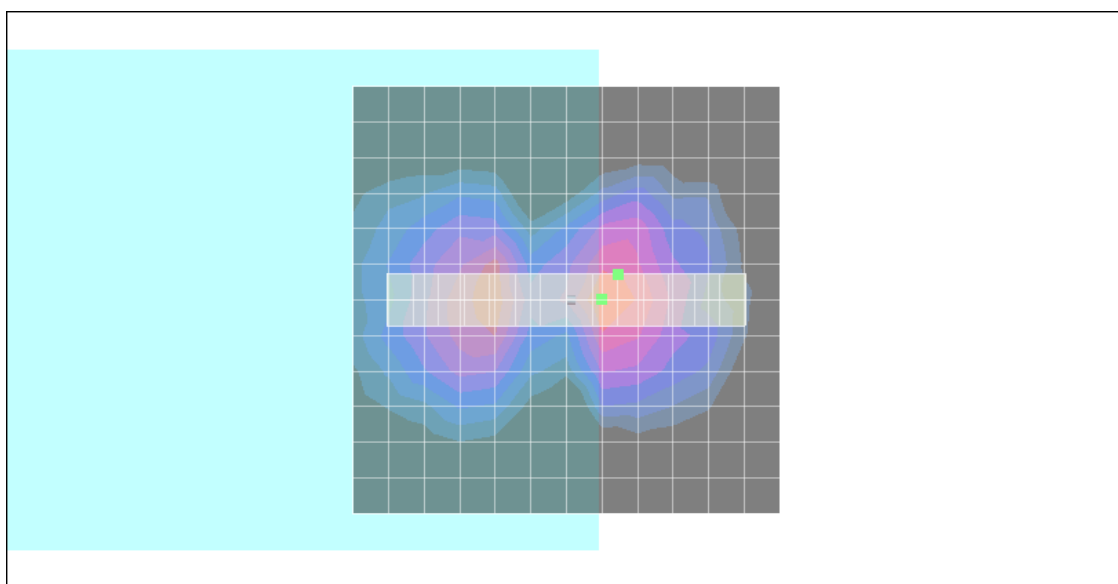
- Probe: AM1DV2 - 1038; ; Calibrated: 2009/1/12
- Sensor-Surface: 0mm (Fix Surface)
- Electronics: DAE4 Sn778; Calibrated: 2009/9/18
- Phantom: HAC Test Arch with AMCC; Type: SD HAC P01 BA;
- Measurement SW: DASY5, V5.0 Build 125; Postprocessing SW: SEMCAD, V1.8 Build 186

Scans/x (longitudinal) fine 3mm 42 x 6/ABM SNR(x,y,z) (15x3x1):

ABM1/ABM2 = 23.5 dB

ABM1 comp = -16.3 dB A/m

Location: -6, -3, 3.7 mm



0 dB = 1.00A/m

Test Laboratory: Sporton

Date: 2009/12/31

#05 T-Coil_CDMA2000 BC1_RC1+SO3_Ch25_Battery 1_Radial 2 (Y)

DUT: 9D1711

Communication System: CDMA ; Frequency: 1851.25 MHz;Duty Cycle: 1:1

Medium: Air Medium parameters used: $\sigma = 0$ mho/m, $\epsilon_r = 1$; $\rho = 1$ kg/m³

Ambient Temperature : 22.6 °C

DASY5 Configuration:

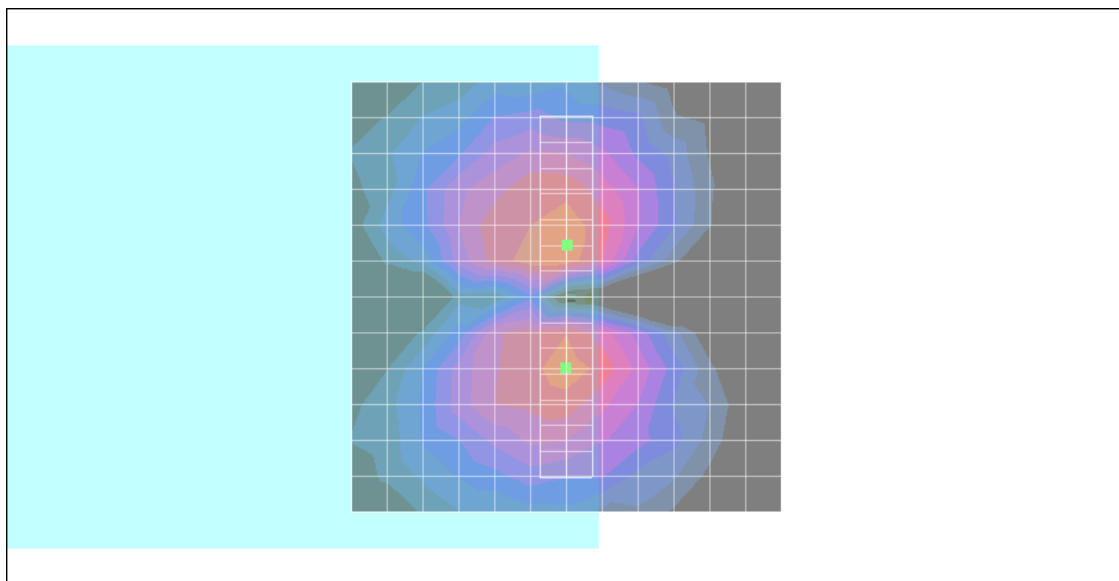
- Probe: AM1DV2 - 1038; ; Calibrated: 2009/1/12
- Sensor-Surface: 0mm (Fix Surface)
- Electronics: DAE4 Sn778; Calibrated: 2009/9/18
- Phantom: HAC Test Arch with AMCC; Type: SD HAC P01 BA;
- Measurement SW: DASY5, V5.0 Build 125; Postprocessing SW: SEMCAD, V1.8 Build 186

Scans/y (transversal) fine 3mm 6 x 42/ABM SNR(x,y,z) (3x15x1):

ABM1/ABM2 = 27.0 dB

ABM1 comp = -17.0 dB A/m

Location: 0, -6, 3.7 mm



0 dB = 1.00A/m

Test Laboratory: Sporton

Date: 2009/12/31

#06 T-Coil_CDMA2000 BC1_RC1+SO3_Ch600_Battery 1_Axial (Z)

DUT: 9D1711

Communication System: CDMA ; Frequency: 1880 MHz;Duty Cycle: 1:1

Medium: Air Medium parameters used: $\sigma = 0$ mho/m, $\epsilon_r = 1$; $\rho = 1$ kg/m³

Ambient Temperature : 22.6 °C

DASY5 Configuration:

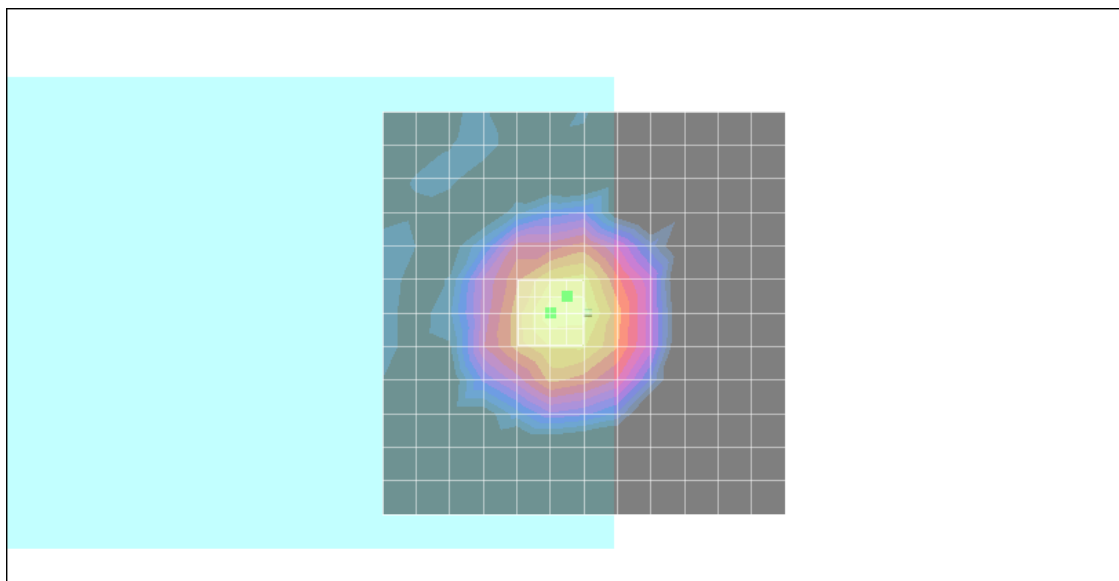
- Probe: AM1DV2 - 1038; ; Calibrated: 2009/1/12
- Sensor-Surface: 0mm (Fix Surface)
- Electronics: DAE4 Sn778; Calibrated: 2009/9/18
- Phantom: HAC Test Arch with AMCC; Type: SD HAC P01 BA;
- Measurement SW: DASY5, V5.0 Build 125; Postprocessing SW: SEMCAD, V1.8 Build 186

Scans/z (axial) fine 2mm 8 x 8/ABM SNR(x,y,z) (5x5x1):

ABM1/ABM2 = 30.7 dB

ABM1 comp = -7.01 dB A/m

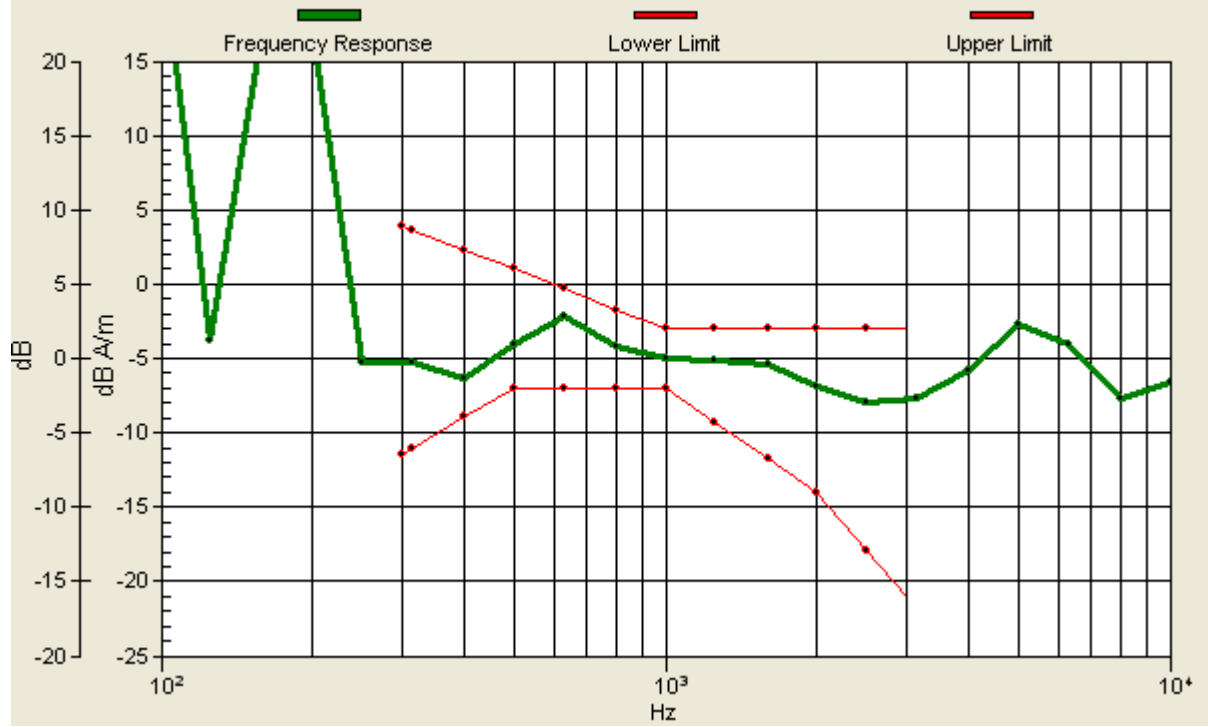
Location: 2.2, -2, 3.7 mm



0 dB = 1.00A/m

Scans/z (axial) wideband at best S/N/ABM Freq Resp(x,y,z,f)

Loc: 2.2, -2, 3.7 mm Diff: 1.87dB



Test Laboratory: Sporton

Date: 2009/12/31

#06 T-Coil_CDMA2000 BC1_RC1+SO3_Ch600_Battery 1_Radial 1 (X)

DUT: 9D1711

Communication System: CDMA ; Frequency: 1880 MHz;Duty Cycle: 1:1

Medium: Air Medium parameters used: $\sigma = 0$ mho/m, $\epsilon_r = 1$; $\rho = 1$ kg/m³

Ambient Temperature : 22.6 °C

DASY5 Configuration:

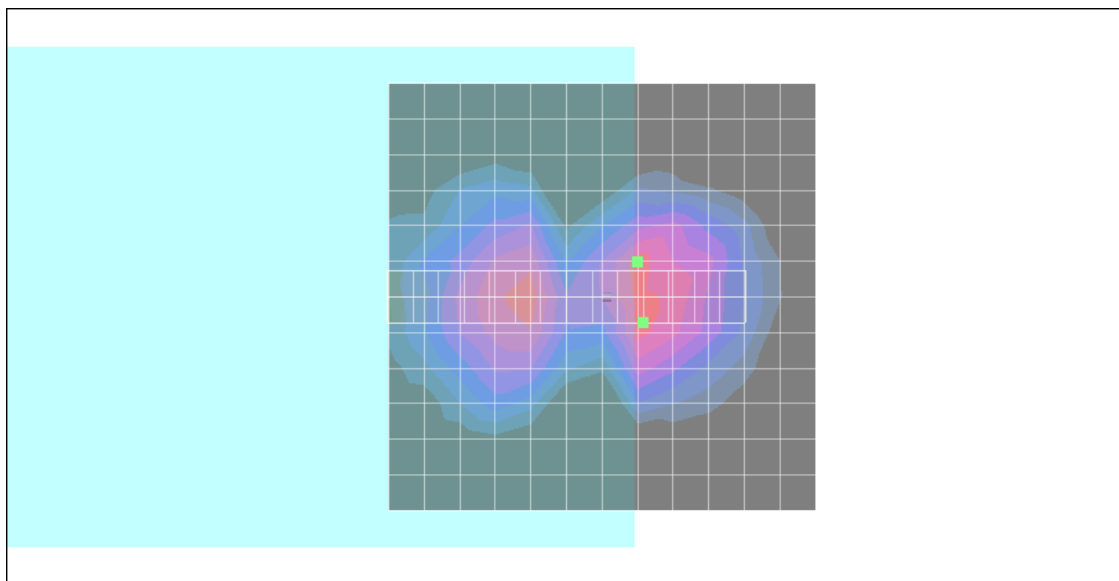
- Probe: AM1DV2 - 1038; ; Calibrated: 2009/1/12
- Sensor-Surface: 0mm (Fix Surface)
- Electronics: DAE4 Sn778; Calibrated: 2009/9/18
- Phantom: HAC Test Arch with AMCC; Type: SD HAC P01 BA;
- Measurement SW: DASY5, V5.0 Build 125; Postprocessing SW: SEMCAD, V1.8 Build 186

Scans/x (longitudinal) fine 3mm 42 x 6/ABM SNR(x,y,z) (15x3x1):

ABM1/ABM2 = 23.7 dB

ABM1 comp = -16.5 dB A/m

Location: -4.8, 3, 3.7 mm



0 dB = 1.00A/m

Test Laboratory: Sporton

Date: 2009/12/31

#06 T-Coil_CDMA2000 BC1_RC1+SO3_Ch600_Battery 1_Radial 2 (Y)

DUT: 9D1711

Communication System: CDMA ; Frequency: 1880 MHz; Duty Cycle: 1:1

Medium: Air Medium parameters used: $\sigma = 0$ mho/m, $\epsilon_r = 1$; $\rho = 1$ kg/m³

Ambient Temperature : 22.6 °C

DASY5 Configuration:

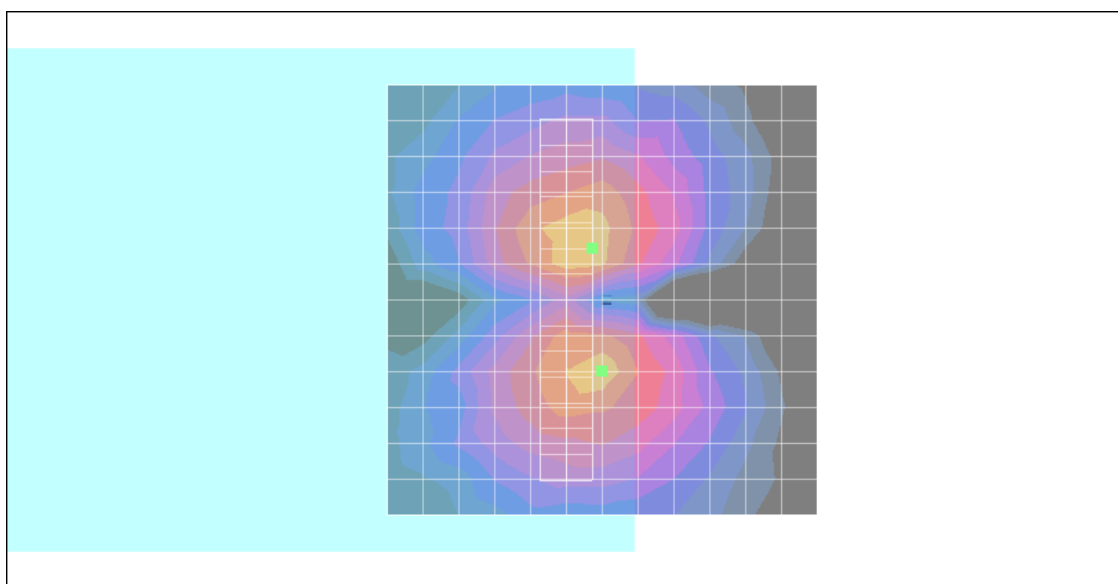
- Probe: AM1DV2 - 1038; ; Calibrated: 2009/1/12
- Sensor-Surface: 0mm (Fix Surface)
- Electronics: DAE4 Sn778; Calibrated: 2009/9/18
- Phantom: HAC Test Arch with AMCC; Type: SD HAC P01 BA;
- Measurement SW: DASY5, V5.0 Build 125; Postprocessing SW: SEMCAD, V1.8 Build 186

Scans/y (transversal) fine 3mm 6 x 42/ABM SNR(x,y,z) (3x15x1):

ABM1/ABM2 = 28.2 dB

ABM1 comp = -15.4 dB A/m

Location: 1.2, -6, 3.7 mm



0 dB = 1.00A/m

Test Laboratory: Sporton

Date: 2009/12/31

#07 T-Coil_CDMA2000 BC1_RC1+SO3_Ch1175_Battery 1_Axial (Z)

DUT: 9D1711

Communication System: CDMA ; Frequency: 1908.75 MHz; Duty Cycle: 1:1

Medium: Air Medium parameters used: $\sigma = 0$ mho/m, $\epsilon_r = 1$; $\rho = 1$ kg/m³

Ambient Temperature : 22.6 °C

DASY5 Configuration:

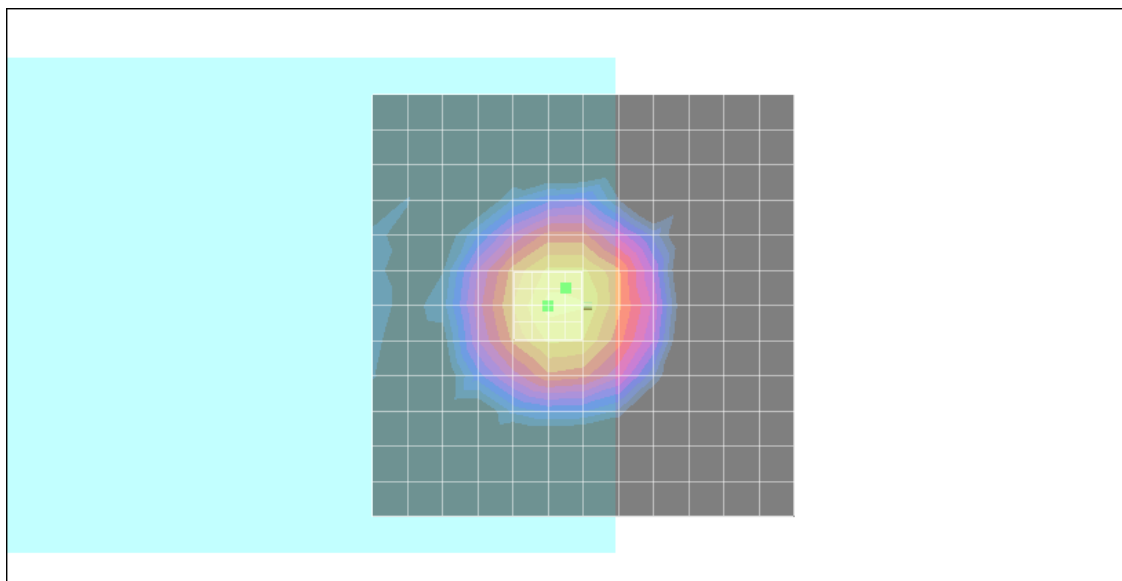
- Probe: AM1DV2 - 1038; ; Calibrated: 2009/1/12
- Sensor-Surface: 0mm (Fix Surface)
- Electronics: DAE4 Sn778; Calibrated: 2009/9/18
- Phantom: HAC Test Arch with AMCC; Type: SD HAC P01 BA;
- Measurement SW: DASY5, V5.0 Build 125; Postprocessing SW: SEMCAD, V1.8 Build 186

Scans/z (axial) fine 2mm 8 x 8/ABM SNR(x,y,z) (5x5x1):

ABM1/ABM2 = 30.6 dB

ABM1 comp = -6.72 dB A/m

Location: 2.2, -2, 3.7 mm



0 dB = 1.00A/m

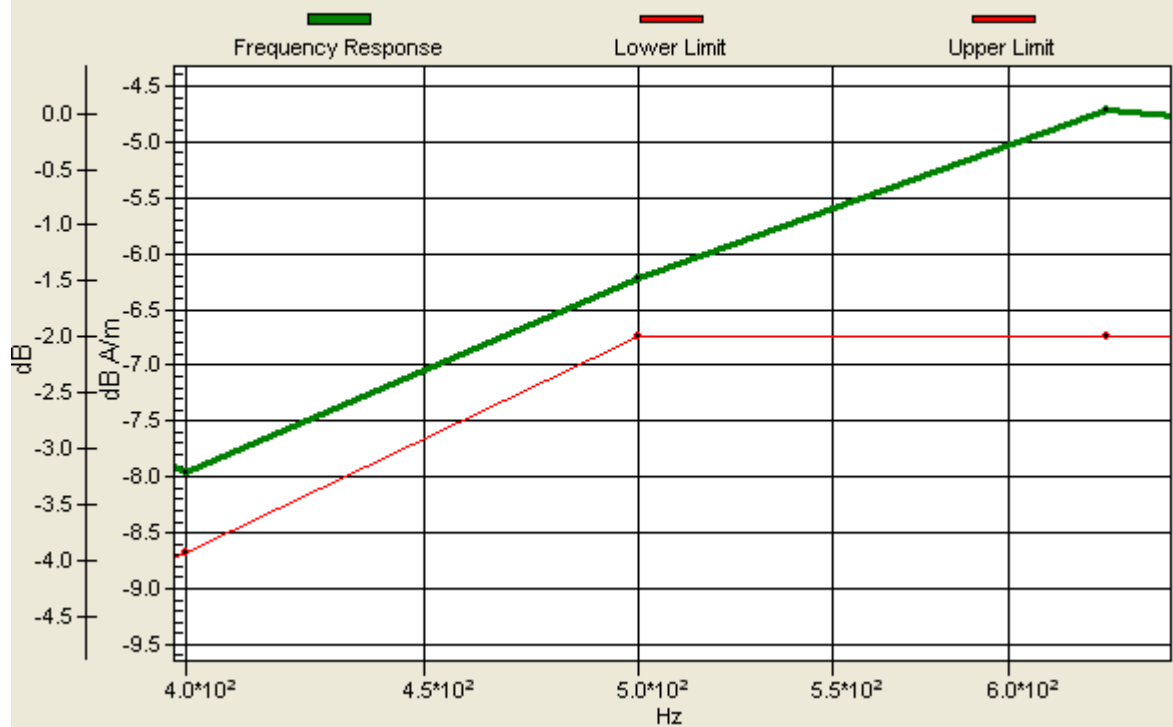
Scans/z (axial) wideband at best S/N/ABM Freq Resp(x,y,z,f)

Loc: 2.2, -2, 3.7 mm Diff: 0.52dB



Scans/z (axial) wideband at best S/N/ABM Freq Resp(x,y,z,f)

Loc: 2.2, -2, 3.7 mm Diff: 0.52dB



Test Laboratory: Sporton

Date: 2009/12/31

#07 T-Coil_CDMA2000 BC1_RC1+SO3_Ch1175_Battery 1_Radial 1 (X)

DUT: 9D1711

Communication System: CDMA ; Frequency: 1908.75 MHz;Duty Cycle: 1:1

Medium: Air Medium parameters used: $\sigma = 0$ mho/m, $\epsilon_r = 1$; $\rho = 1$ kg/m³

Ambient Temperature : 22.6 °C

DASY5 Configuration:

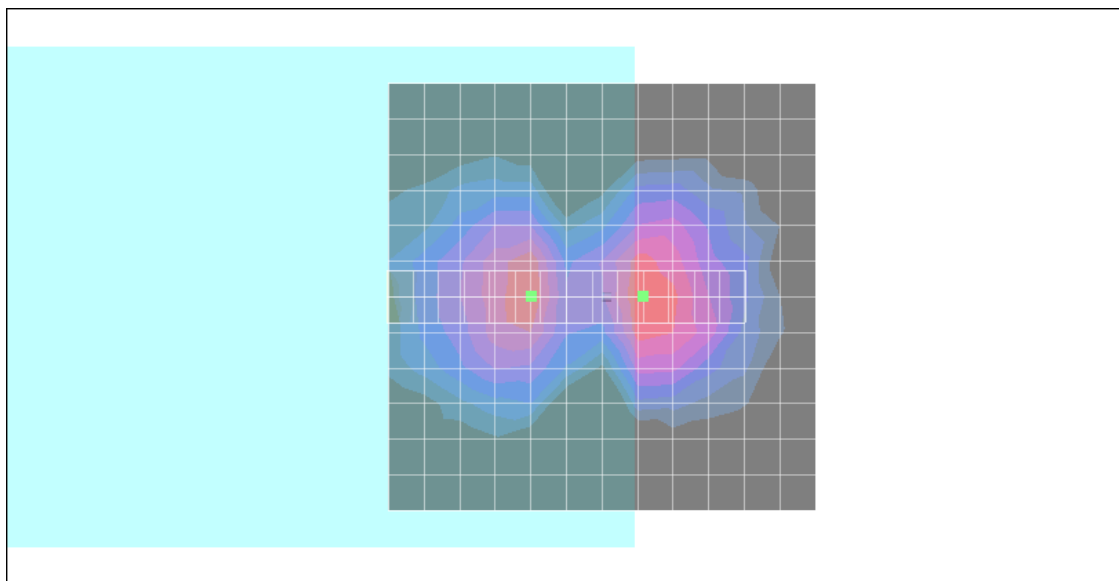
- Probe: AM1DV2 - 1038; ; Calibrated: 2009/1/12
- Sensor-Surface: 0mm (Fix Surface)
- Electronics: DAE4 Sn778; Calibrated: 2009/9/18
- Phantom: HAC Test Arch with AMCC; Type: SD HAC P01 BA;
- Measurement SW: DASY5, V5.0 Build 125; Postprocessing SW: SEMCAD, V1.8 Build 186

Scans/x (longitudinal) fine 3mm 42 x 6/ABM SNR(x,y,z) (15x3x1):

ABM1/ABM2 = 23.1 dB

ABM1 comp = -15.2 dB A/m

Location: -4.8, 0, 3.7 mm



0 dB = 1.00A/m

Test Laboratory: Sporton

Date: 2009/12/31

#07 T-Coil_CDMA2000 BC1_RC1+SO3_Ch1175_Battery 1_Radial 2 (Y)

DUT: 9D1711

Communication System: CDMA ; Frequency: 1908.75 MHz; Duty Cycle: 1:1

Medium: Air Medium parameters used: $\sigma = 0$ mho/m, $\epsilon_r = 1$; $\rho = 1$ kg/m³

Ambient Temperature : 22.6 °C

DASY5 Configuration:

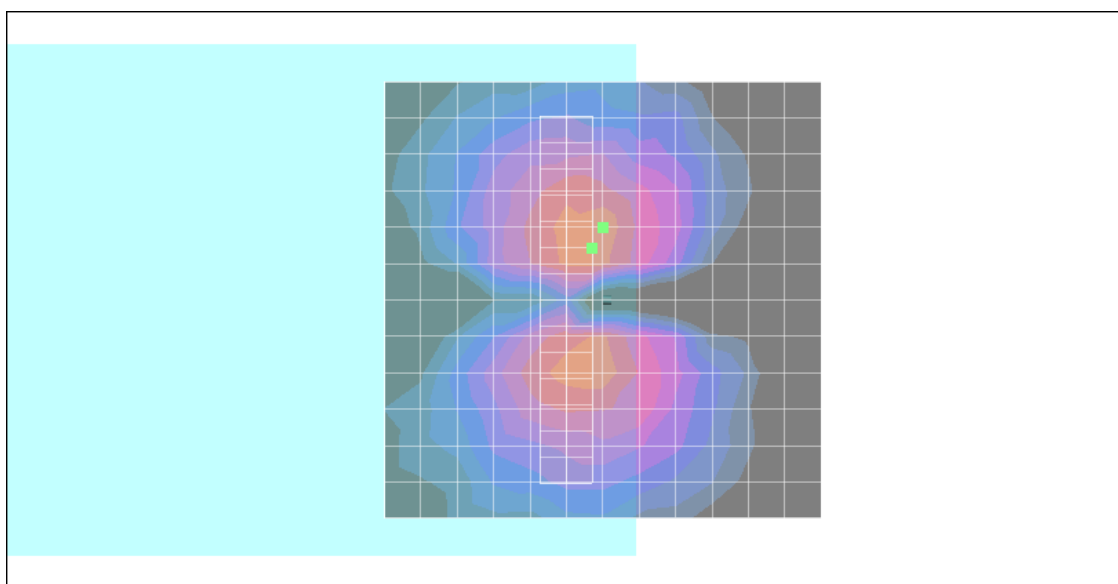
- Probe: AM1DV2 - 1038; ; Calibrated: 2009/1/12
- Sensor-Surface: 0mm (Fix Surface)
- Electronics: DAE4 Sn778; Calibrated: 2009/9/18
- Phantom: HAC Test Arch with AMCC; Type: SD HAC P01 BA;
- Measurement SW: DASY5, V5.0 Build 125; Postprocessing SW: SEMCAD, V1.8 Build 186

Scans/y (transversal) fine 3mm 6 x 42/ABM SNR(x,y,z) (3x15x1):

ABM1/ABM2 = 28.2 dB

ABM1 comp = -15.2 dB A/m

Location: 1.2, -6, 3.7 mm



0 dB = 1.00A/m

Test Laboratory: Sporton

Date: 2009/12/31

#08 T-Coil_CDMA2000 BC1_RC1+SO3_Ch1175_Battery 2_Axial (Z)

DUT: 9D1711

Communication System: CDMA ; Frequency: 1908.75 MHz; Duty Cycle: 1:1

Medium: Air Medium parameters used: $\sigma = 0$ mho/m, $\epsilon_r = 1$; $\rho = 1$ kg/m³

Ambient Temperature : 22.6 °C

DASY5 Configuration:

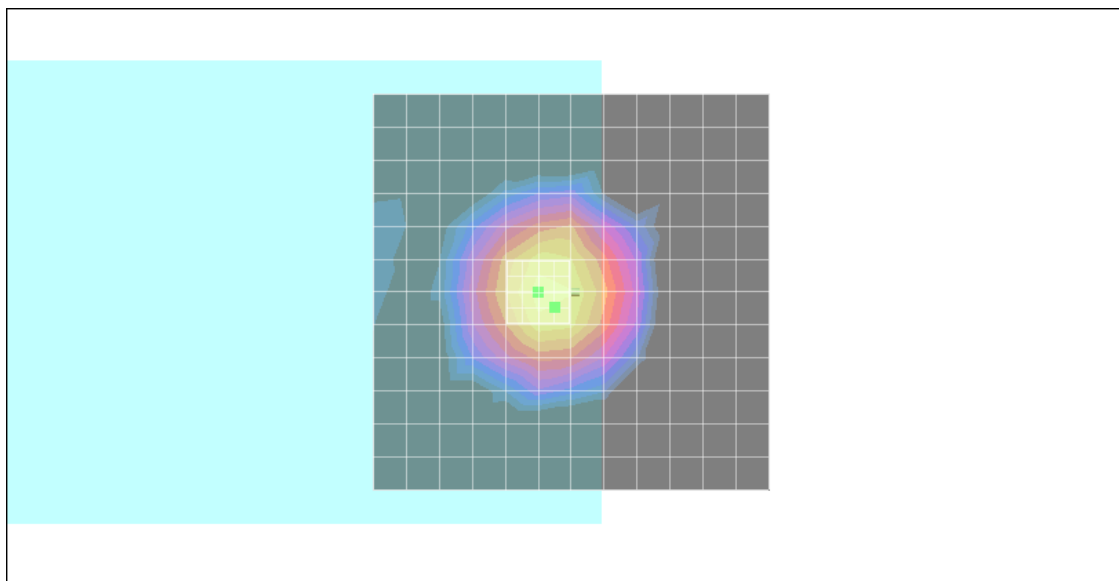
- Probe: AM1DV2 - 1038; ; Calibrated: 2009/1/12
- Sensor-Surface: 0mm (Fix Surface)
- Electronics: DAE4 Sn778; Calibrated: 2009/9/18
- Phantom: HAC Test Arch with AMCC; Type: SD HAC P01 BA;
- Measurement SW: DASY5, V5.0 Build 125; Postprocessing SW: SEMCAD, V1.8 Build 186

Scans/z (axial) fine 2mm 8 x 8/ABM SNR(x,y,z) (5x5x1):

ABM1/ABM2 = 31.9 dB

ABM1 comp = -7.06 dB A/m

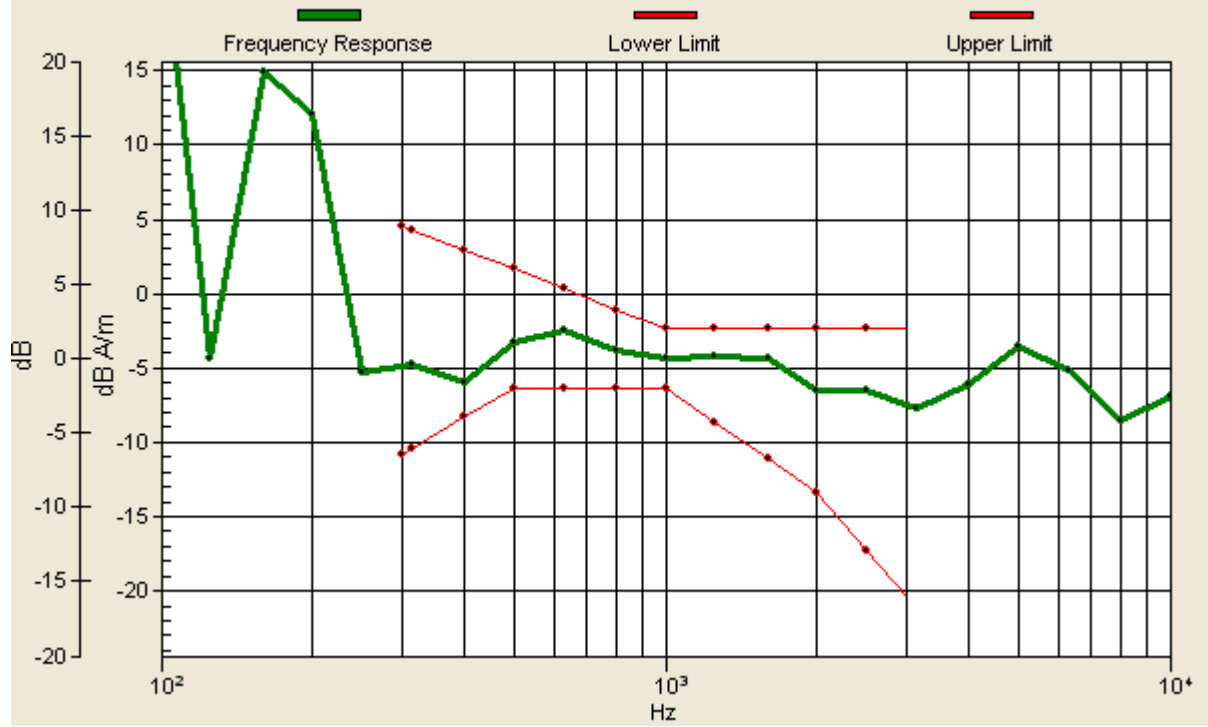
Location: 2.2, 2, 3.7 mm



0 dB = 1.00A/m

Scans/z (axial) wideband at best S/N/ABM Freq Resp(x,y,z,f)

Loc: 2.2, 2, 3.7 mm Diff: 1.89dB



Test Laboratory: Sporton

Date: 2009/12/31

#08 T-Coil_CDMA2000 BC1_RC1+SO3_Ch1175_Battery 2_Radial 1 (X)

DUT: 9D1711

Communication System: CDMA ; Frequency: 1908.75 MHz;Duty Cycle: 1:1

Medium: Air Medium parameters used: $\sigma = 0$ mho/m, $\epsilon_r = 1$; $\rho = 1$ kg/m³

Ambient Temperature : 22.6 °C

DASY5 Configuration:

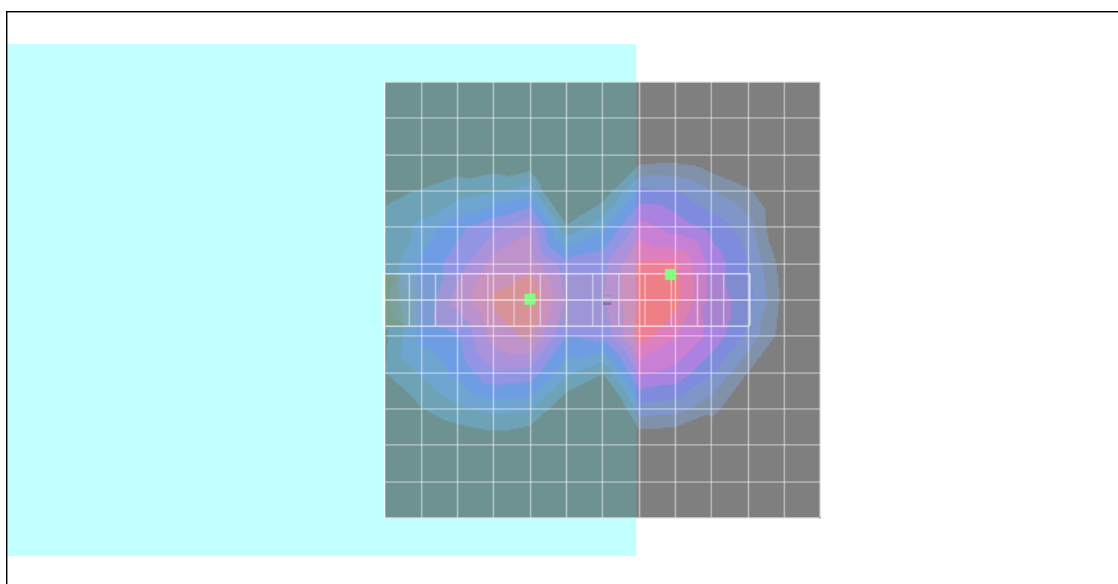
- Probe: AM1DV2 - 1038; ; Calibrated: 2009/1/12
- Sensor-Surface: 0mm (Fix Surface)
- Electronics: DAE4 Sn778; Calibrated: 2009/9/18
- Phantom: HAC Test Arch with AMCC; Type: SD HAC P01 BA;
- Measurement SW: DASY5, V5.0 Build 125; Postprocessing SW: SEMCAD, V1.8 Build 186

Scans/x (longitudinal) fine 3mm 42 x 6/ABM SNR(x,y,z) (15x3x1):

ABM1/ABM2 = 23.7 dB

ABM1 comp = -16.9 dB A/m

Location: -7.8, -3, 3.7 mm



0 dB = 1.00A/m

Test Laboratory: Sporton

Date: 2009/12/31

#08 T-Coil_CDMA2000 BC1_RC1+SO3_Ch1175_Battery 2_Radial 2 (Y)

DUT: 9D1711

Communication System: CDMA ; Frequency: 1908.75 MHz;Duty Cycle: 1:1

Medium: Air Medium parameters used: $\sigma = 0$ mho/m, $\epsilon_r = 1$; $\rho = 1$ kg/m³

Ambient Temperature : 22.6 °C

DASY5 Configuration:

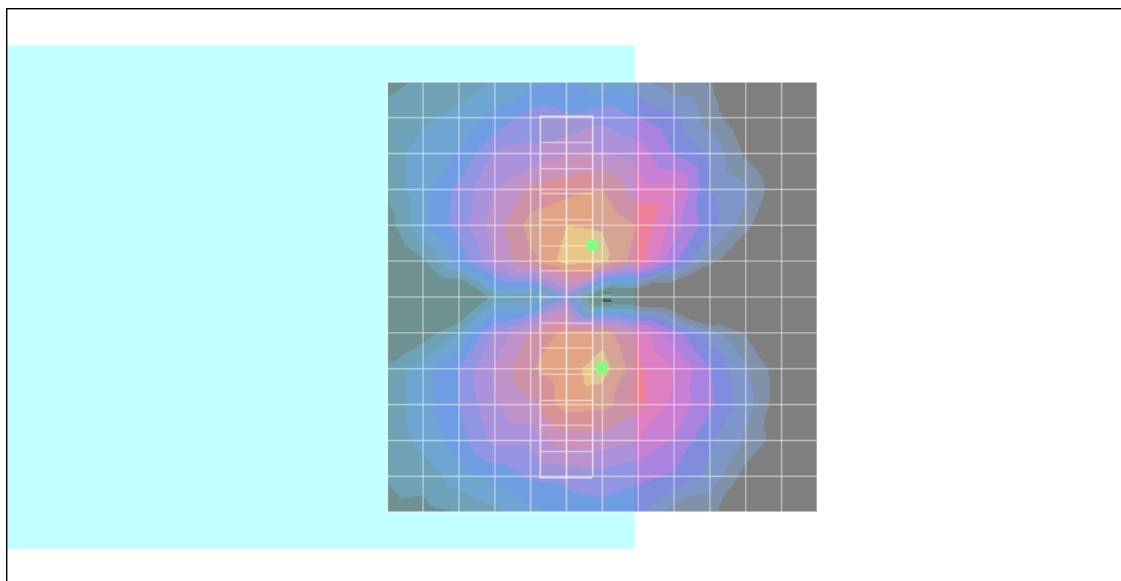
- Probe: AM1DV2 - 1038; ; Calibrated: 2009/1/12
- Sensor-Surface: 0mm (Fix Surface)
- Electronics: DAE4 Sn778; Calibrated: 2009/9/18
- Phantom: HAC Test Arch with AMCC; Type: SD HAC P01 BA;
- Measurement SW: DASY5, V5.0 Build 125; Postprocessing SW: SEMCAD, V1.8 Build 186

Scans/y (transversal) fine 3mm 6 x 42/ABM SNR(x,y,z) (3x15x1):

ABM1/ABM2 = 25.7 dB

ABM1 comp = -16.1 dB A/m

Location: 1.2, -6, 3.7 mm



0 dB = 1.00A/m