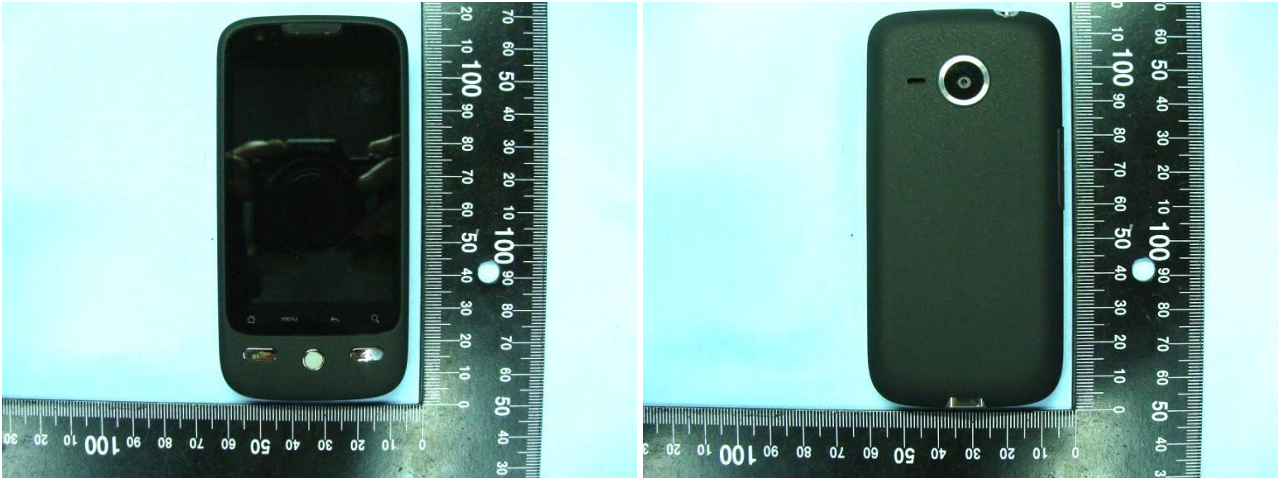


Appendix D. Product Photos

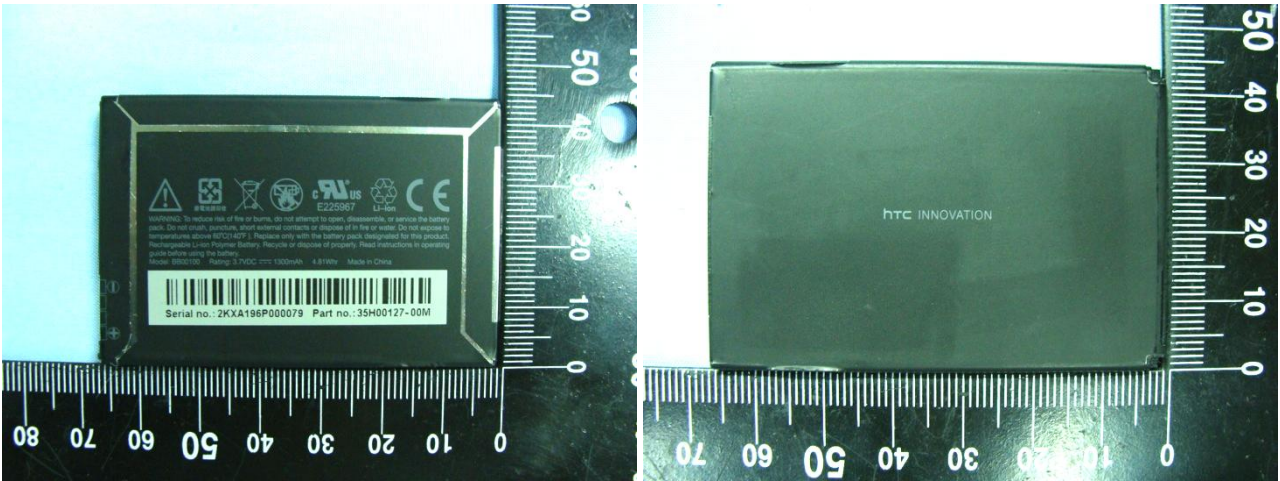
List of Accessory:

Specification of Accessory		
Adapter 1	Manufacturer	Foxlink
	Brand Name	hTC
	Model Name	TC P300
	Part Number	79H00082-00M
	Power Rating	I/P:100-240Vac, 50-60Hz, 0.2A; O/P: 5Vdc, 1A
Adapter 2	Manufacturer	Delta
	Brand Name	hTC
	Model Name	TC P300
	Part Number	79H00078-19M
	Power Rating	I/P:100-240Vac, 50-60Hz, 0.2A; O/P: 5Vdc, 1A
Battery 1	Manufacturer	HT Energy
	Brand Name	hTC
	Model Name	BB00100
	Power Rating	3.7Vdc, 1300mAh, 4.81Whr
	Type	Li-ion
Battery 2	Manufacturer	Formosa
	Brand Name	hTC
	Model Name	BB00100
	Power Rating	3.7Vdc, 1300mAh, 4.81Whr
	Type	Li-ion
Earphone (Support unit)	Brand Name	hTC
	Model Name	HS S300
	Signal Line Type	1.71 meter non-shielded cable without ferrite core
USB Cable 1	Brand Name	MEC
	Model Name	DC U200
	Signal Line Type	1.25 meter shielded cable without ferrite core
USB Cable 2	Brand Name	Foxlink
	Model Name	DC U200
	Signal Line Type	1.25 meter shielded cable without ferrite core
LCM-Main	Brand Name	EID
	Model Name	60H00189-00M
LCM-2nd	Brand Name	TPO
	Model Name	60H00248-00M

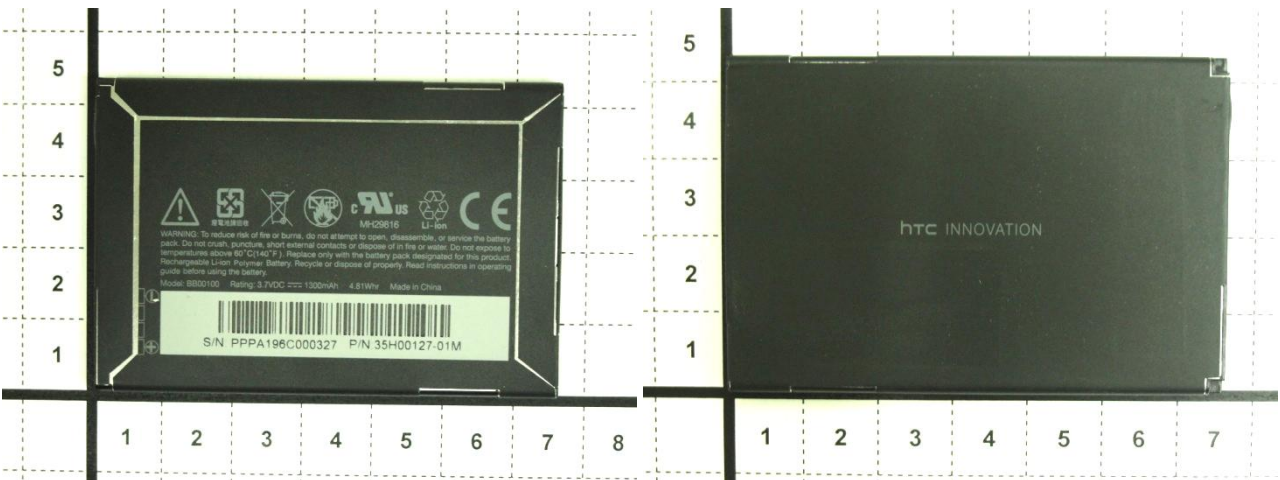
Remark: The above EUT's information was declared by manufacturer. Please refer to the specifications or user's manual for more detailed description.



Battery 1



Battery 2

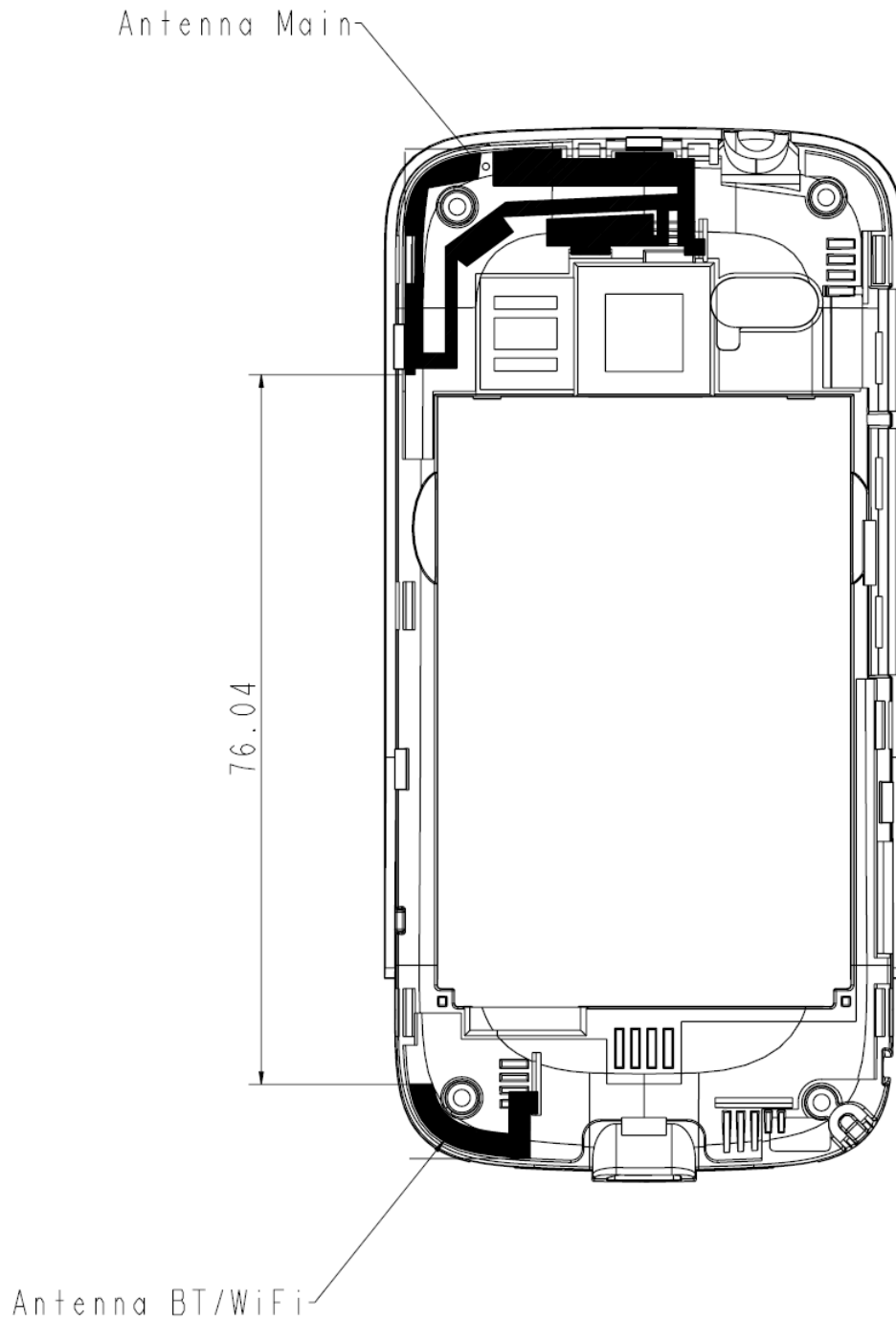




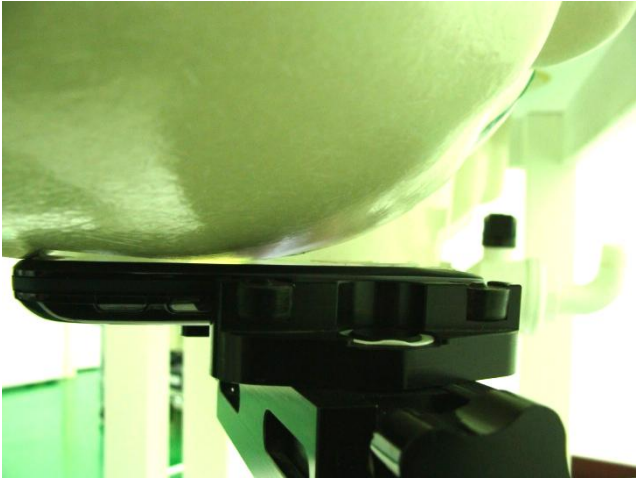
Earphone



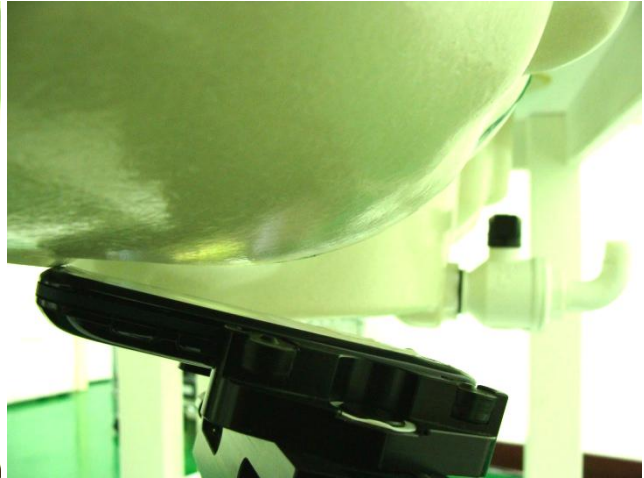
Antenna Location :



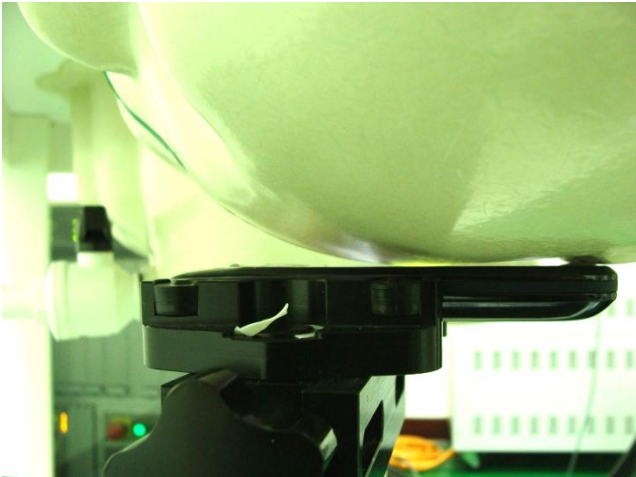
Appendix E. Test Setup Photos



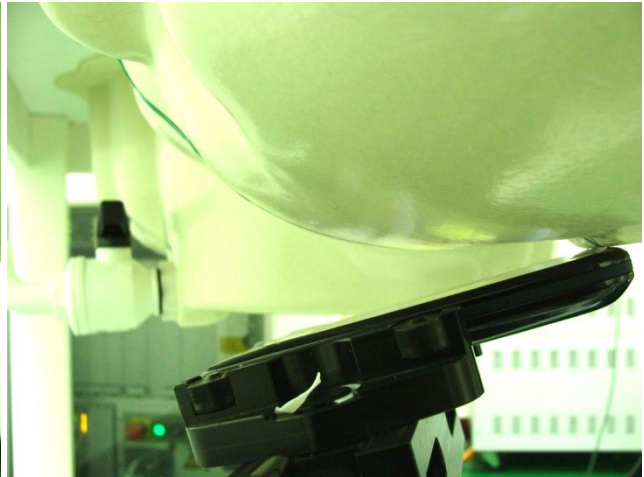
Right Cheek



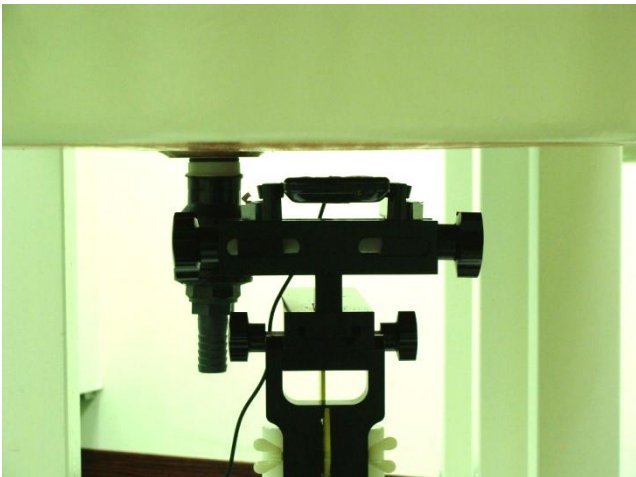
Right Tilted



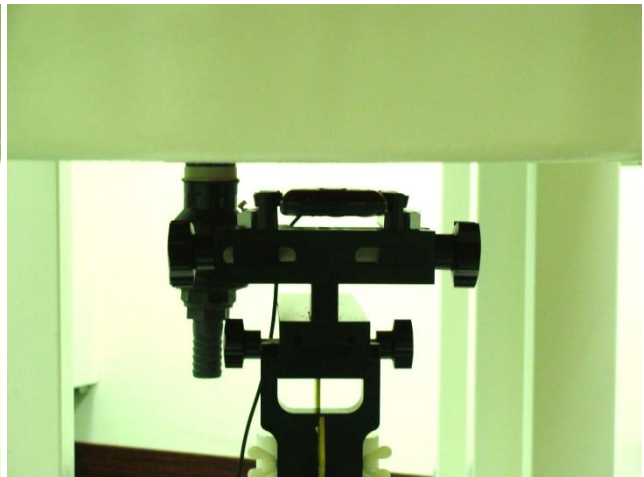
Left Cheek



Left Tilted



Face of the DUT with Phantom 1.5 cm Gap



Bottom of the DUT with Phantom 1.5 cm Gap