

1. When you receive a new MMS message, open and view the message.
  2. To avoid receiving MMS messages from this sender next time, tap **Menu > Show > Message Detail**.
  3. On the MMS Detail screen, tap **Menu > Show Contact Details**.
  4. Tap **Menu > Save to Blacklist**.
  5. Tap **Done**.
- Tips**
- To view the Blacklist tab, on the SMS \ MMS screen, tap **Menu > MMS Options > Blacklist** tab.
  - To unblock a phone number and allow the sender to send you MMS messages, remove the number from the Blacklist. Tap and hold the phone number in the Blacklist then tap **Delete**.

## 7.4 Types of E-mail Accounts

You can set up the following types of e-mail accounts on your device:

- Outlook e-mail that you sync with your PC or the Exchange Server.
- E-mail account that you have from an Internet Service Provider (ISP).
- Web-based e-mail accounts such as Yahoo!® Mail, AOL®, etc.
- Work account that you access using a VPN connection.

## 7.5 E-mail Setup Wizard

**Windows Mobile's E-mail Setup Wizard** lets you easily set up your personal and work e-mail accounts. You can add an e-mail account from an Internet Service Provider (ISP) or other e-mail provider as well as web-based accounts such as Gmail®, Yahoo!® Mail Plus, AOL®, etc.

**Note** For more information about setting up your company Outlook e-mail account, see Chapter 8.

### Set up your device to synchronize Outlook e-mail with the computer

If you have installed the synchronization software on your PC and created a partnership with your device, then your device is ready to send and receive Outlook e-mail.

If you have not yet installed the synchronization software nor created a partnership, please do so by following the procedures in Chapter 5.

**Tip** To set up your company e-mail account so that you can access Outlook e-mail messages wirelessly, you must set up your device to synchronize via a wireless LAN or over-the-air connection with your company's Exchange Server. For more information about synchronizing with your company e-mail server, see Chapter 8.

### Set up a POP3 or IMAP4 e-mail account

Set up a POP3 or IMAP4 e-mail account on your device if you have an e-mail account from an Internet service provider (ISP) or other e-mail provider, or a web-based account such as Gmail, Yahoo! Mail Plus, etc. You can also add a work account that you access using a VPN server connection as a POP3/IMAP4 account.

1. Tap **Start > Messaging > New E-mail Account**.
2. Enter your e-mail address, and select the **Try to get e-mail settings automatically from the Internet** check box. By selecting the option, the device attempts to download e-mail server settings so that you do not need to enter them manually. Tap **Next**.
3. After Auto Setup finishes, tap **Next**.

**Note** If Auto Setup is unsuccessful, select **Internet e-mail** from the **Your e-mail provider** list on the next screen. You will also be asked to enter e-mail server settings during the setup process. See “To specify e-mail server settings” for details.

4. Enter your name. You can also edit the **Account display name** field to specify the name of your ISP or e-mail provider. Tap **Next**.
5. Enter your login name if it does not show automatically in the **User name** field. Also enter your password, and select the **Save password** check box. Tap **Next**.
6. At this point, e-mail setup is complete. In the **Automatic Send/Receive** list, choose how frequent you want e-mail messages to be automatically sent and downloaded on your device.  
**Note** Tap **Review all download settings** to select download options, set the e-mail format as HTML or plain text, and more. For more information, see “To customize download and format settings.”
7. Tap **Finish**.

### To specify e-mail server settings

If Auto Setup is unsuccessful, contact your ISP or e-mail provider for the **Incoming mail server** and **outgoing mail server settings** so you can enter them on your device.

Other options that you can select include the following:

- Select the **Outgoing server requires authentication** check box, if required by your provider.
- If the outgoing e-mail server requires a different user name and password for sending e-mail, clear the **Use the same user name and password for sending e-mail** check box. You will be prompted to enter this information.
- Tap **Advanced Server Settings**, then select the **Require SSL** check boxes if your e-mail provider uses an SSL connection for more secured e-mail. From the **Network connection** list, select the data connection that you use for connecting to the Internet.

### To customize download and format settings

Before you tap **Finish** when setting up your POP3 or IMAP4 e-mail account, you can tap **Review all download settings** to choose download options, message format, and other settings.

Options	Description
<b>Automatic Send/Receive</b>	You can select a time interval for connecting to the Internet automatically to send and receive messages.
<b>Download messages</b>	Set the number of days of messages that you want to be downloaded to your device.
<b>Send/receive when I click Send</b>	By default, messages are immediately delivered when you tap <b>Send</b> . If you prefer to save outgoing messages to the Outbox folder first, clear the check box. (In this case, you will need to manually send messages by tapping <b>Menu &gt; Send/Receive</b> ).
<b>Use automatic send/receive schedule when roaming</b>	This allows your device to data roam when there is a set time interval for connecting to the Internet automatically. Since this may result in higher connection costs, you may want to leave the check box cleared.
<b>When deleting messages</b>	Choose whether to delete messages from the mail server when you delete them on your device.
<b>Message format</b>	Select HTML or Plain Text.
<b>Message download limit</b>	Select the e-mail download size. If you have large volumes of e-mail, use a lower size or select to download headers only.

---

## 7.6 Using E-mail

After setting up e-mail accounts on your device, you can start sending and receiving e-mail messages.

### Create and send messages

#### To compose and send a message

1. Tap **Start > Contacts**.
2. Slide your finger upward on the touch screen to scroll down the contact list. See “Finger scrolling and finger panning” in Chapter 1 for more details on finger scrolling.
3. Touch the contact’s name to open his or her contact card.
4. On the contact card, touch the item that shows **Send e-mail**.
5. If you have several e-mail accounts, the Account Picker screen will appear. Select an e-mail account that you want to use.
6. A new e-mail message is then created.

To add more recipients, enter their e-mail addresses, separating them with a semicolon. You can also tap **To** if you want to add e-mail addresses stored in Contacts.

7. Enter a subject and compose your message. To quickly add common messages, tap **Menu > My Text** and tap a desired message.
8. To check the spelling, tap **Menu > Spell Check**.
9. Tap **Send**.

- Tips**
- To enter symbols, tap **Shift** using the onscreen keyboard then tap a symbol. For more information about entering text and symbols, see Chapter 2.
  - To set the priority, tap **Menu > Message Options**.
  - If you are working offline, e-mail messages are moved to the Outbox folder and will be sent the next time you connect.

#### To add an attachment to a message

1. In the message that you are composing, tap **Menu > Insert** and tap the item you want to attach: **Picture**, **Voice Note**, or **File**.
2. Select the file you want to attach, or record a voice note.

### To automatically add a signature in outgoing messages

You can automatically add your name and other information as your signature in outgoing SMS, MMS and e-mail messages by following these steps:

**Tip** You need to specify your signature for each type of messaging accounts.

1. Tap **Start > Messaging**, then tap **Menu > Options**.
2. Tap **Signatures**.
3. Select a type of messaging account in which to add a signature.
4. Select the **Use signature with this account** check box.  
**Note** If you want the signature to be added whenever you reply or forward messages, select the **Use when replying and forwarding** check box.
5. In the provided text box, enter the information that will be displayed as your signature.
6. Repeat steps 3 to 5 to add a signature to the other types of messaging accounts.

### Filter the Inbox message list

When the Inbox on your device is full of messages, it may be hard to browse and locate a desired message. You can filter your Inbox to only display the messages that contain a particular sender or subject you are searching for.

#### To filter your Inbox

- Enter the sender name or e-mail subject you want to look for using the onscreen keyboard. As you tap keys, the message list narrows down to the conditions you have set.



For example, tapping “S”, then “A” narrows the list to only the e-mails that contain sender names and e-mail subjects that start with “SA.”

## View and reply to messages

### To read an incoming message

By default, only the first few kilobytes of a message are shown when you open an incoming message. To read the whole message:

- Finger-scroll to the end of the message and tap **Get the rest of this message**; or
- Tap **Menu > Download Message**.

The message will be downloaded the next time you tap **Menu > Send/Receive** to send and receive e-mail.

**Note** If your company is running Microsoft Exchange Server 2007, the message downloads immediately, without waiting until the next time you synchronize. For more information about working with company e-mails, see Chapter 8.

### To download an attachment

An attachment appears below the subject of the message. Tapping the attachment opens the attachment if it has been fully downloaded or marks it for download the next time you send and receive e-mail.

- Notes**
- If there are multiple attachments in the message, all attachments are downloaded.
  - For information about setting your device to automatically download file attachments, see “Customize e-mail settings”.

- If your company is running Microsoft Exchange Server 2007, the attachment downloads immediately, without waiting until the next time you synchronize. For more information about working with company e-mails, see Chapter 8.

### To reply to or forward a message

1. Open the message and tap **Menu > Reply**, **Menu > Reply All**, or **Menu > Forward**.
2. Enter your response then tap **Send**.

**Tip** Whenever you reply to all the recipients of an Outlook e-mail, your own e-mail address will also be added to the recipient list. You can customize ActiveSync so that your e-mail address will be excluded. To do so, tap **Menu > Options** in ActiveSync, select the **E-mail** item, tap **Settings**, then tap **Advanced**. In the **My e-mail addresses** text box, enter your e-mail address.

### To view and reply to HTML e-mails

You can receive, view and reply to HTML e-mails from any type of e-mail account. The HTML format is retained, without layout shifting or resizing.

**Note** HTML e-mail support in Outlook Mobile is available only if your company is using Microsoft Exchange Server 2007.

1. Set the message format to HTML. To find out how to set the message format, see “Customize e-mail settings”.
2. Tap **Start > Messaging**, select your e-mail account, and open an HTML e-mail that you received.
3. Tap the **Tap to scroll right** option to be able to scroll sideways and get a complete horizontal view of the message.
4. Tap **Get the rest of this message** that’s shown at the bottom of the message to download and view the whole message.
5. If the e-mail does not download immediately, tap **Menu > Send/Receive**.
6. If images do not immediately appear on the message, tap **Internet pictures blocked** then tap **Download Internet pictures**.
7. Tap **Menu** and choose whether to reply or forward the message.
8. Enter your response then tap **Send**.

**Tip** E-mail can contain hyperlinks to web pages.



## Download messages

The manner in which you download messages depends on the type of e-mail account you have.

### To send and receive e-mail for an Outlook account

1. Tap **Start > Programs > ActiveSync**.
2. Connect your device to your PC using the USB cable or Bluetooth.  
Otherwise, connect wirelessly if you are synchronizing Outlook e-mail with the Exchange Server. For more information, see Chapter 8.
3. Synchronization automatically begins, and your device sends and receives Outlook e-mail.

**Tip** You can also manually synchronize anytime by tapping **Sync** in ActiveSync or **Menu > Send/Receive** in Outlook Mobile.

### To send and receive e-mail for a POP3/IMAP4 account

If you have an e-mail account with an ISP or a work account that you access using a VPN server connection, you send and receive messages through a remote e-mail server. Before sending and downloading messages, you need to connect to the Internet or your corporate network.

1. Tap **Start > Messaging** and tap your POP3 or IMAP4 e-mail account.
2. Tap **Menu > Send/Receive**. Messages on your device and e-mail server are synchronized: new messages are downloaded to the device Inbox folder, messages in the Outbox folder are sent, and messages deleted from the server are removed from the device Inbox.

## Customize e-mail settings

### To change the download size and format for Outlook e-mail

1. Disconnect your device from the computer.
2. Tap **Start > Programs > ActiveSync**.
3. Tap **Menu > Options**, select **E-mail**, then tap **Settings**.
4. On the E-mail Sync Options screen:
  - Under **Download size limit**, select the desired email size.
  - Under **Message format**, select HTML or Plain text.
5. Close ActiveSync and reconnect your device to the computer.

### To change the download size and format for POP3/IMAP4 e-mail

1. Tap **Menu > Options** on the Account Picker screen, or tap **Menu > Tools > Options** while you're in a message list.
2. Tap your e-mail account.
3. Keep tapping **Next** until you see **Message format** and **Message download limit** on the screen.
4. Under **Message format**, select HTML or Plain text.
5. Under **Download size limit**, select the desired email size.
6. Tap **Finish**.

### To automatically receive attachments on Outlook e-mails

1. Tap **Start > ActiveSync**.
2. Tap **Menu > Options**.
3. Tap **E-mail > Settings**, then select **Include file attachments**.

### To automatically receive attachments on IMAP4 e-mails

1. Tap **Start > Messaging**.
2. Tap **Menu > Options**.
3. Tap the name of your IMAP4 account.
4. Keep tapping **Next** until you see the **Download attachments** item on the screen.
5. Select a download size from the **Download attachments** list box.
6. Tap **Finish**.

### To store attachments on a storage card

1. Tap **Start > Messaging**.
2. Tap **Menu > Options > Storage** tab.
3. Select the **When available, use the storage card to store attachments** check box.

# Chapter 8

## Working With Company E-mails and Meeting Appointments

**8.1 Synchronizing Your Device with the  
Exchange Server**

**8.2 Working With Company E-mails**

**8.3 Managing Meeting Requests**

**8.4 Finding Contacts in the Company Directory**



## 8.1 Synchronizing Your Device with the Exchange Server

To keep up-to-date with your company e-mails and meeting schedules while you're out of the office, you can connect your device to the Internet wirelessly and synchronize with your company's Exchange Server.

### Set up an Exchange Server connection

Before you can synchronize or access information on the Exchange Server, you need to set up an Exchange Server connection on your device. You need to get the following information from your network administrator and enter them on your device:

- Exchange Server name (must be the Outlook Web Access server name)
- Domain name
- User name and password that you use at work

If you have not synchronized your device with your PC, follow these steps to set up an Exchange Server connection.

1. Tap **Start > Messaging > New E-mail Account**.
2. Enter your e-mail address. Clear the **Try to get e-mail settings automatically from the Internet** check box, then tap **Next**.
3. Select **Exchange server** in the **Your e-mail provider** list, then tap **Next**.
4. Tap **Next** again.
5. In **Server address**, enter the Exchange Server name, and tap **Next**.
6. Enter your user name, password, and domain, and tap **Next**.  
**Tip** To change the rules for resolving synchronization conflicts, tap **Advanced**.
7. Select the items that you want to sync with the Exchange Server.
8. To change synchronization settings of an information type, for example, E-mail, select the type of information, and tap **Settings**.
9. Tap **Finish**.

**Note** If you synchronized e-mails with your PC before, open ActiveSync on your device and tap **Menu > Add Server Source** to set up an Exchange Server connection. When you're prompted to select information types for synchronization, you need to clear the **E-mail** check box under the Windows PC item first before you can select **E-mail** under Exchange Server.

**Tip** To change Exchange Server settings, open ActiveSync then tap **Menu > Configure Server**.

## Start synchronization

Before you start synchronizing with the Exchange Server, make sure your device has been set up with a data connection to the Internet so that you can synchronize wirelessly. For more information about connections, see Chapter 10.

After you finish setting up an Exchange Server connection, your device automatically starts synchronization.

You can manually start synchronization anytime by tapping **Sync** in ActiveSync.

**Note** If you connect your device to your office computer via a USB or Bluetooth connection, you can use this connection to the PC to “pass through” to the network and download Outlook e-mails and other information to your device.

## 8.2 Working With Company E-mails

Your device gives you instant access to your company e-mails and lets you manage your messages easier. Direct Push, Fetch Mail, Remote e-mail search, and e-mail flags are just some of the tools you can use to manage your e-mails.

**Note** Some messaging features depend on the Microsoft Exchange Server version used in your company. Please check with your network administrator for the availability of these features.

### Automatic synchronization through Direct Push

**Direct Push** technology (push e-mail feature) enables you to receive new e-mails on your device as soon as they arrive in your Inbox on the Exchange Server. With this feature, items such as contacts, calendar and tasks are



also immediately updated onto your device when these items have been changed or new entries have been added on the Exchange Server. To make Direct Push work, you need to have a GPRS connection on your device.


You need to perform a full synchronization between your device and the Exchange Server first before Direct Push can be enabled.

**Requirement** The Direct Push feature works for your device only if your company is using **Microsoft Exchange Server 2003 Service Pack 2 (SP2) with Exchange ActiveSync or higher version.**

### To enable Direct Push via Comm Manager

1. Tap **Start > Settings > Connections** tab > **Comm Manager**.
2. On the Comm Manager screen, tap the **DirectPush** button.

The button  will turn to , which indicates that you will receive e-mails as they arrive.

When the button is in the  state, you need to manually retrieve your e-mails.

### To enable Direct Push via ActiveSync

1. In ActiveSync on your device, tap **Menu > Schedule**.
2. Select **As items arrive** in the **Peak times** and **Off-peak times** boxes.

## Scheduled synchronization

If you do not want to use Direct Push, you can set a regular schedule for synchronizing Outlook e-mail and information.

1. In ActiveSync on your device, tap **Menu > Schedule**.
2. Select a shorter time interval in the **Peak times** box for you to be able to receive e-mails more frequently. (Peak times which usually refer to your working hours when e-mail volume is high).
3. Select a longer interval in the **Off-peak times** box.

**Tip** To set the days and hours that make up your peak and off-peak times, tap **Adjust peak times to fit your schedule**.

## Instant download through Fetch Mail

The **Fetch Mail** feature downloads an entire e-mail immediately without the need for you to perform a full Send/Receive action. This limits the download to just the e-mail message that you want and helps save data cost.

**Requirement** Fetch Mail works for your device only if your company is using **Microsoft Exchange Server 2007 or higher**.

1. Tap **Start > Messaging > Outlook E-mail**.
2. Tap an e-mail message to open it.
3. By default, only the first few kilobytes of the message is shown. To download the whole e-mail, finger-scroll to the end of the message then tap **Get the rest of this message**.
4. A “Downloading message” status appears. Wait for the remainder of the message body to be downloaded.

**Tip** For information about changing e-mail sync options such as the initial download size limit for e-mail, see “Customize e-mail settings” in Chapter 7.

**Note** When you receive an e-mail that contains a link to a document such as a PDF or Microsoft Office document located on SharePoint or an internal file server, you can tap the link to view the document on your device. You can view the document only if you have a Microsoft Outlook account that synchronizes with Microsoft Exchange Server 2007 or later. Exchange Server must also be set up to allow access to SharePoint document libraries or internal file servers.

## Search for e-mails on the Exchange Server

You can access messages that are not available on your device by searching your Microsoft Exchange Server mailbox. The search results will be downloaded and displayed in a Search Results folder.

**Requirement** Your company must be using **Microsoft Exchange Server 2007 or higher**.

1. Tap **Start > Messaging > Outlook E-mail**.
2. Tap **Menu > Tools > Search Server**.
3. In the **Look for** text box, enter the search keyword.
4. Choose the date range of messages to search from.

- From the **Look in** list, choose whether to search from your inbox or outbox only or to search all folders.
- Tap **Search**.

## Flag your messages

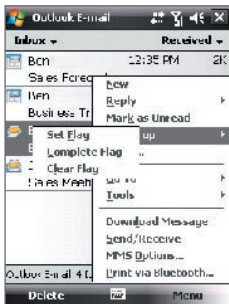
Flags serve as a reminder for you to follow-up on important issues or requests contained in the e-mail messages. Flagging messages, which has been a useful feature on desktop Outlook E-mail, can also be done in Outlook Mobile on your device. You can flag received e-mail messages on your device.

**Requirement** Flags are enabled only if e-mails are synchronized with **Microsoft Exchange Server 2007 or higher**. Flags are disabled or hidden if e-mails are synchronized with earlier versions of Microsoft Exchange Server.

### To flag or unflag a message

- Tap **Start > Messaging > Outlook E-mail**.
- Select a message or open a message.
- Tap **Menu > Follow Up** and select one of the following options:
  - Set Flag** Mark the message with a red flag to indicate that it needs follow up.
  - Complete Flag** Mark the message with a check mark to indicate that the issue or request in the e-mail is already completed.
  - Clear Flag** Remove the flag to unmark the message.

**Note** E-mail message reminders are displayed on your device if the messages are flagged with reminders and synchronized from the Exchange Server.

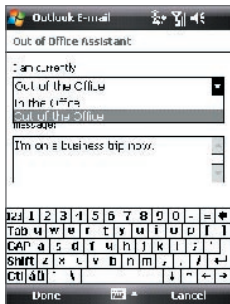




## Out-of-office auto-reply

Outlook Mobile allows you to retrieve and change your out-of-office status. Just like desktop Outlook E-mail, Outlook Mobile automatically sends an auto-reply message when you're not available.

**Requirement** Out-of-office auto-reply works for your device only if your company is using **Microsoft Exchange Server 2007 or higher**.



### To send out-of-office auto-reply messages

1. Tap **Start > Messaging > Outlook E-mail**.
2. Tap **Menu > Tools > Out of Office**.
3. From the **I am currently** list, select **Out of the Office**.
4. Enter your auto-reply message then tap **Done**.

## 8.3 Managing Meeting Requests

When you schedule and send meeting requests from your device, you can invite attendees to your meeting and check their status to know about their availability.

When you receive a meeting request, you can reply by accepting or declining the request. The meeting request also clearly indicates whether or not there are conflicting or adjacent meetings.

**Requirement** Your company must be using **Microsoft Exchange Server 2007 or higher**.

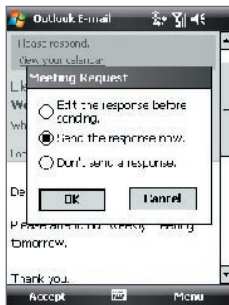
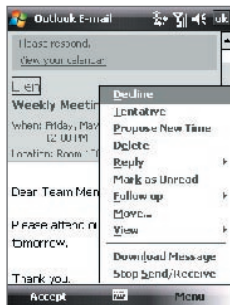
### To reply to a meeting request

1. When you receive a meeting request e-mail, a notification will be displayed on the Today screen. Open the e-mail.

2. Tap **Accept** to reply and accept the meeting request, or tap **Menu > Decline** if you cannot attend the meeting.

- Tips**
- Before responding, you can check your availability during the time of the requested meeting by tapping **View your calendar**.
  - If the time of the meeting conflicts with your other appointments, a “Scheduling Conflict” status appears on top of the e-mail.

3. Choose whether or not to edit your response e-mail before sending then tap **OK**:



4. If you accepted the meeting request, it will automatically be added as an appointment in Calendar on your device.

### To view the list of meeting participants

1. Tap **Start > Calendar**.
2. Tap a meeting request that you previously sent, then tap **Attendees**. The list of required and optional attendees will be listed.

- Notes**
- For information about creating a meeting request, see “To send a meeting request” in Chapter 6.
  - If you select a meeting that you have organized, the list shows who has accepted or declined the meeting.
  - To view an attendee’s contact information, tap the attendee’s name. If the attendee is included in your contacts list, you will see the contact information immediately. If the attendee is not in your contacts list, tap **Company Directory** to view the contact information.

## 8.4 Finding Contacts in the Company Directory

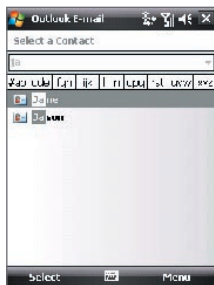
In addition to having contacts on your device, you can access contact information from your organization's Company Directory. By having over-the-air access to the Company Directory, you can easily send e-mail messages and meeting requests to anyone in your company.

**Requirement** Access to the Company Directory is available only if your organization is running Microsoft Exchange Server 2003 SP2 or higher, and you have completed your first synchronization with the Exchange Server.

1. Synchronize with Exchange Server if you have never done so.
2. Do any of the following:
  - In Contacts, tap **Menu > Company Directory**.
  - In a new e-mail message, tap the **To** box (or tap **Menu > Add Recipient**) then tap **Company Directory**.



- In a new meeting request using Calendar, tap **Attendees** and then tap **Company Directory** at the top of the list.
3. Enter the part or full contact name and tap **Search**. In the search results list, tap a contact to select it.



- Notes**
- You can save a contact from the Company Directory to your device by selecting the contact then tapping **Menu > Save to Contacts**.
  - You can search on the following information as long as that information is included in the Company Directory: First name, Last name, E-mail name, Display name, E-mail address, or Office location.

# Chapter 9

## Working With Documents and Files

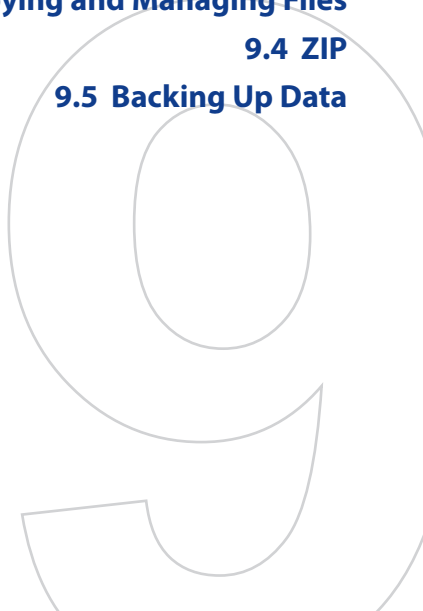
**9.1 Microsoft® Office Mobile**

**9.2 Adobe® Reader® LE**

**9.3 Copying and Managing Files**

**9.4 ZIP**

**9.5 Backing Up Data**



## 9.1 Microsoft® Office Mobile

**Microsoft® Office Mobile** consists of the following applications:

- **Microsoft® Office Word Mobile** lets you create and edit documents and templates in Word Mobile and save them as **\*.doc**, **\*.rtf**, **\*.txt**, and **\*.dot** files.
- **Microsoft® Office Excel® Mobile** lets you create and edit Excel workbooks and templates on your device.
- **Microsoft® Office PowerPoint® Mobile** allows you to view (not create) slide show presentations in **\*.ppt** and **\*.pps** formats.

### To use Microsoft Office Mobile

1. Tap **Start > Office Mobile**.
2. Tap the Office Mobile application that you want to use.

- Notes**
- Word Mobile does not fully support some features of Microsoft® Office Word such as revision marks and password protection. Some data and formatting may be lost when you save on your device a Word document that was created in Office Word on the PC. To see a complete list of features that are not supported in Word Mobile, see Help on your device.
  - Excel Mobile does not fully support some features such as formulas and cell comments. Some data and formatting may be lost when you save on your device an Excel workbook that was created in Office Excel on the PC. To see a complete list of features that are not supported in Excel Mobile, see Help on your device.
  - Currently, Microsoft Office Mobile does not support viewing of Microsoft Office 2007 files. Visit the Windows Mobile® Web site for details.

## 9.2 Adobe® Reader® LE

**Adobe® Reader® LE** is an application for viewing PDF (Portable Document Format) documents on your device. It supports a subset of the features found in the PC versions of Adobe Reader.

### To open Adobe Reader LE





- Tap **Start > Programs > Adobe Reader LE**.

### To open a PDF file on your device


- Open a PDF file in Adobe Reader LE; or
- Open File Explorer and find the desired PDF file, then tap the file to open it.

### To navigate through a PDF document

When you are viewing a PDF document, you can do any of the following:

- Use the vertical and horizontal scroll bars (including the Up, Down, Right and Left arrow keys on the bars) to move to the desired direction of the page.
- Press NAVIGATION up/down/right/left to move to the desired direction of the page.
- Tap  to move to the previous page; tap  to move to the next page. Tap  to jump to the first page; tap  to jump to the last page.
- Tap **Tools > Go To** to select the desired page to view.

### To search for text in the document

1. Tap **Tools > Find > Text** or tap  on the toolbar.
2. Type in the text to be searched, then tap **Find**.
3. The matched text in the document will be highlighted.
4. To search for the next occurrence of the text, tap **Tools > Find > Next**.

- Tips**
- Adobe Reader LE displays a bookmark pane for the PDF files that contain bookmarks. Tap the bookmarks to go to a specific section/page within the file.
  - Adobe Reader LE supports password-protected PDF files with up to 128-bit encryption. When you open a password-protected PDF file, you will be prompted to enter the password before the file can be opened.

## 9.3 Copying and Managing Files

You can copy files between your device and PC, or copy files to a storage card that is inserted on your device. You can also efficiently manage your files and folders using File Explorer.

### To copy files using Windows Mobile Device Center or ActiveSync

1. Connect your device to the PC.
2. Click **File Management > Browse the contents of your device** in Windows Mobile Device Center or click **Explore** in ActiveSync on your PC. This opens Windows Explorer on your PC and displays the contents of your device.
3. To copy a file from your device to your PC:
  - a. Browse the contents of your device, right-click the file you want to copy, then click **Copy**.
  - b. Right-click a folder in your PC, then click **Paste**.
4. To copy a file from your PC to your device:
  - a. Browse the folders on your PC, right-click the file you want to copy, then click **Copy**.
  - b. Right-click a folder on your device, then click **Paste**.

### To manage files on your device using File Explorer

**File Explorer** lets you browse and manage the contents of your device. The root folder on the device is named My Device, and contains the following folders: My Documents, Program Files, Windows, and more.

1. Tap **Start > Programs > File Explorer**.
2. Tap a folder or file to open it.
3. To return to an upper level folder, tap the Down arrow (▼) and select the folder.
4. To delete, rename, or copy a file quickly, tap and hold the file then choose the desired operation from the shortcut menu. To select multiple files, tap and drag over the desired files.



**To copy files to a storage card**

1. Make sure the storage card is properly inserted into your device.
2. Tap **Start > Programs > File Explorer** and navigate to the appropriate folder.
3. Tap and hold the file you want to copy, and tap **Copy**.
4. Tap the Down arrow (▼) then tap **Storage Card** from the list.
5. Tap **Menu > Edit > Paste**.

**Tip** You can configure programs such as Word Mobile and Excel Mobile to directly save edited files on your storage card. In the program's file list, tap **Menu > Options** then select the storage card in the **Save to** box.

## 9.4 ZIP

The **ZIP** program increases the storage capacity of your device by allowing you to compress files in the conventional ZIP format. It also allows you to extract files from a zip file.

**To start ZIP on your device**

- Tap **Start > Programs > ZIP**.

Each time you start ZIP, it searches for files that have the .zip file extension, and displays these files on the Archive List screen.

**To open a ZIP file and extract files**

1. Open a zip file by doing one of the following:
  - Select a file and tap **File > Open Archive**.
  - Tap and hold a file and tap **Open Archive**.
  - Double-tap a file.

**Note** You cannot select multiple ZIP files.

2. From the zip file, select files by doing one of the following:
  - Tap to select a file.
  - To select several files, tap **Menu > Action** and make sure **Multi-Select Mode** is selected. Select files by tapping each file. (Tap a selected file to deselect it).
  - To select all files, tap **Menu > Action > Select All**.

3. Tap **Menu > Action > Extract**.
4. Choose a folder in which files will be extracted to, then tap **Extract**.

#### To create a zip archive

1. Tap **File > New Archive**.
2. On the Save As screen, enter a zip file name and choose a folder in which to save the zip file. You can also choose whether the zip file will be saved on the device's main memory or a storage card.
3. Tap **Save**.
4. Tap **Menu > Action > Add**.
5. Double-tap the folder that contains the files you want to archive.
6. Select files by doing one of the following:
  - Tap to select a file.
  - To select several files, tap and hold on the screen, then select **Multi-Select Mode**. Select files by tapping each file. (Tap a selected file to deselect it).
  - To select all files, tap and hold on the screen, then tap **Select All**.
7. Tap **Add**.
8. Tap **Menu > File > Close Archive**.

## 9.5 Backing Up Data

Use **Sprite Backup** to back up data, which includes settings, files, contacts, and all other information, to a storage card or to a designated folder on your device.

#### To install Sprite Backup

1. Make sure your device is connected to your computer via a USB cable.
2. Insert the Application Disc on your computer's CD or DVD drive and install Sprite Backup to your device. Follow the onscreen instructions on your computer to complete the installation.
3. After the installation is completed, the Setup Wizard on your computer will set up Sprite Backup on your device. Follow the onscreen instructions to complete the setup.

## To open Sprite Backup

- On your device, tap **Start > Programs > Sprite Backup**.

Sprite Backup can operate in two different modes: **Basic mode** and **Advanced mode**.



Basic mode



Advanced mode

## To back up data in Basic mode

Basic mode is the default mode, and allows you to easily back up your entire device with the tap of a button.

**Note** To change backup options or location, you will need to do it in Advanced mode.

- On the Basic mode screen, tap **Backup Now**.
- Specify a password (between 6 to 15 characters in length) for the backup file. Enter this password twice, then tap **OK**.
- Follow the onscreen instructions to complete the backup.

## To restore data in Basic mode


- On the Basic mode screen, tap **Restore Now**.
- Enter the password for the backup file, then tap **OK**.
- Follow the onscreen instructions to complete the restoration process.

### To back up data in Advanced mode

Advanced mode is designed for users with more advanced backup requirements.

1. Tap **Options > Switch to Advanced Mode**.
2. In the **Backup** tab, you will see a tree view of the data and files on your device. Tap the '+' symbol at the left of an item to view its sub-items. Use the check boxes to select or exclude items for backup.
3. Tap the **Backup** button and follow the onscreen instructions to complete the backup.

### To restore data in Advanced mode


1. On the Advanced mode screen, tap the **Restore** tab.
2. If there is a most recent backup file, this file will be displayed with its contents. Otherwise, if you want to use an older backup file, tap  then select the desired file.

If the backup file is password protected, the password must be entered before the backup file can be displayed in the tree view.

3. In the tree view, select the items you want to be restored.
4. Tap **Restore** and follow the onscreen instructions to restore.

**Note** In both the Basic and Advanced modes, Sprite Backup soft resets your device first before it begins the backup or restoration process. It soft resets again after the operation is completed.

### To change the backup location and file name

1. On the Advanced mode screen, tap the **Backup** tab.
2. Tap  then enter the backup file name and choose whether to save the file to the **Storage Card** or the **My Documents** folder on your device.
3. Tap **OK**.

### To enable remote backup to a computer

1. On the Advanced mode screen, tap **Options > Networking**.
2. Select the **Enable Remote Backup** check box and choose whether to do the remote backup to your PC via ActiveSync or network.

For more information about using Sprite Backup, see Help on your device.

# Chapter 10

## Getting Connected

**10.1 Comm Manager**

**10.2 Connection Setup**

**10.3 Ways of Connecting to the Internet**

**10.4 GPRS/3G**

**10.5 Dial-up**

**10.6 Starting a Data Connection**

**10.7 Internet Explorer® Mobile**

**10.8 Windows Live™**

**10.9 Using Your Device as a Modem  
(Internet Sharing)**

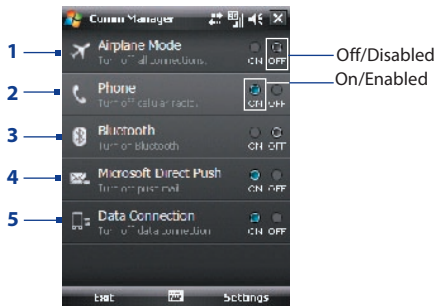
**10.10 Bluetooth**

## 10.1 Comm Manager

**Comm Manager** acts like a central switch that lets you enable or disable phone features as well as manage your data connections easily.

### To open Comm Manager

- Tap **Start > Programs > Comm Manager**.



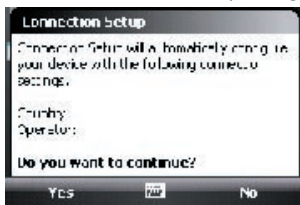
- 1 Tap to switch Airplane mode on or off. Turning on Airplane mode turns off the phone, Bluetooth and WLAN functions. For more information, see "Airplane Mode" in Chapter 3.
- 2 Tap to switch the phone on or off. Tap **Settings > Phone** to set the ring tone and other phone settings. See Chapter 4 for details.
- 3 Tap to switch Bluetooth on or off. Tap **Settings > Bluetooth** to configure Bluetooth on your device. See "Bluetooth" in this chapter for details.
- 4 Tap to switch between automatically receiving (as items arrive) or manually retrieving Outlook e-mails. See Chapter 8 for details.
- 5 Tap to disconnect active data connections (e.g. 3G). You cannot reconnect a data connection in Comm Manager.

## 10.2 Connection Setup

**Connection Setup** configures your device's data connections, such as GPRS, WAP, and MMS, for you so that you do not need to enter the settings manually onto your device. All you need to do is to select your network operator, then Connection Setup does all the configuration for you.

### To automatically detect the network operator

The first time you power on your device, or when you insert a new SIM card and then power on your device, Connection Setup will display a notification message to inform you that it will automatically configure your device.



1. Tap **Yes** on the notification message.

**Note** If your SIM card supports multiple network operator profiles, the next message that appears will display network profile choices. Select the profile you want to use and tap **OK**.

2. Next, you will be asked if you want to automatically configure your device to the proper network settings. Tap **Yes**.

Connection Setup then starts to configure your device's data connection settings.

3. After the Connection Setup completes the configuration, tap **Restart**.

### To manually select the network operator

You can also manually select your network operator from Connection Setup's settings screen. Connection Setup will then reconfigure your device's data connections settings based on the operator that you selected.

1. Tap **Start > Settings > Connections tab > Connection Setup**.
2. Select the network **Country** and **Operator** you want to use.

**Note** If you choose a **Country** and/or **Operator** that is different from the installed SIM card network operator, you may not be able to access network services.

3. Tap **OK**.
4. The next message that appears prompts you to confirm whether you want to configure the data connection settings based on the selected network. Tap **Yes**.  
Connection Setup then starts to configure the data connection settings.
5. After the Connection Setup completes the configuration, tap **Restart**.

## 10.3 Ways of Connecting to the Internet

Your device's networking capabilities allow you to access the Internet or your corporate network at work through wireless and conventional connections. You can connect to the Internet through one of the following connections:

- GPRS, EDGE or 3G
- Dial-up

**Note** You can also add and set up the following connections:

- **VPN:** A VPN connection is used to access your corporate network by using an existing Internet connection.
- **Proxy:** A Proxy connection is used to access the Internet using an existing connection to your corporate or WAP network.

## 10.4 GPRS/3G

Use **GPRS/3G** (or **EDGE**, if available) to connect to the Internet and to send and receive picture messages on your device. You will need a data plan to use your wireless service provider's GPRS/3G network. Check with your wireless service provider to find out about GPRS/3G rates.

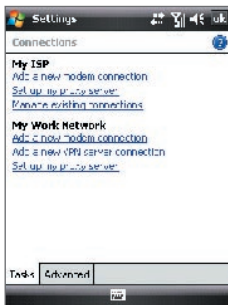
GPRS/3G settings are already preconfigured on your device, and your device is ready to use your wireless service provider's GPRS/3G services. Please do not change the settings as this may cause services to stop working.



## To add a new GPRS/3G connection

In times when you need to add another GPRS/3G connection on your device, obtain the **Access point name** from your wireless service provider. Also, check if a user name and password are required.

1. Tap **Start > Settings > Connections** tab > **Connections**.
2. Under **My ISP**, tap **Add a new modem connection**.
3. On the Make New Connection screen, enter a name for the connection.
4. In the **Select a modem** list, select **Cellular Line (GPRS, 3G)**, then tap **Next**.



5. Enter the Access point name, then tap **Next**.
6. Enter the user name and password, only if required.
7. Tap **Finish**.

- Notes**
- To view help information for any screen, tap the help icon ( ? ).
  - To modify your connection settings, tap **Manage existing connections** on the Connections screen, and complete the connection wizard.

## 10.5 Dial-up

To set up a dial-up connection to your Internet Service Provider (ISP) on your device, you need the same settings that you normally use when you dial up from your computer. This includes the ISP server phone number, your user name and password.

1. Tap **Start > Settings > Connections** tab > **Connections**.
2. Under **My ISP**, tap **Add a new modem connection**.
3. On the Make New Connection screen, enter a name for the connection.
4. In the **Select a modem** list, select **Cellular Line**, then tap **Next**.
5. Enter the ISP server phone number, then tap **Next**.
6. Enter your user name, password, and any other information required by your ISP.
7. Tap **Finish**.

## 10.6 Starting a Data Connection


After setting up a data connection such as GPRS or ISP dial-up on your device, you can now connect your device to the Internet. The connection is started automatically when you begin using a program that accesses the Internet such as Internet Explorer® Mobile.

### To manually start a data connection

If you have set up multiple types of data connections on your device, you can manually start a connection.

1. Tap **Start > Settings > Connections** tab > **Connections**.
2. Tap **Manage existing connections**.
3. Tap and hold the name of the desired connection, then tap **Connect**.

### To disconnect active data connections

1. Tap **Start > Settings > Connections** tab > **Comm Manager**.
2. Tap the **Data Connection** button (  ).


## 10.7 Internet Explorer® Mobile

**Internet Explorer® Mobile** is a full-featured Internet browser, optimized for use on your device.

### To open Internet Explorer® Mobile

- Tap **Start > Internet Explorer**.

### To go to a Web site

- Enter the Web site address in the Address Bar, then tap .

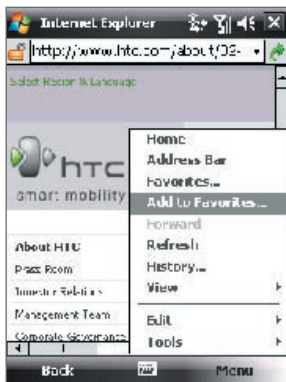
### To view a Web page using finger scrolling and panning

- Slide your finger upward to scroll down the Web page, or slide your finger downward to scroll up the Web page.
- To pan downward, touch and hold on the touch screen then drag your finger upward. To pan upward, touch and hold on the touch screen then drag your finger downward.
- To pan towards the right, touch and hold on the touch screen then drag your finger to the left. To pan towards the left, touch and hold on the touch screen then drag your finger to the right.
- To pan freely around a Web page, touch and hold on the touch screen then drag your finger in the desired direction.

For more information about finger scrolling and panning, see Chapter 1.

### Internet Explorer® menu

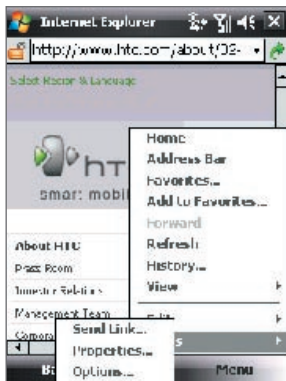
While browsing the Web, tap **Menu** to choose from a list of options, such as saving Favorites, changing the viewing size, and more. You can also tap and hold on a Web page to choose options from the shortcut menu.



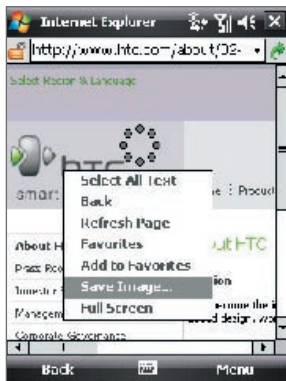
Tap **Menu > Add to Favorites** to save the current Web page in your Favorites folder.



Tap **Menu > View** to select the text size and type of view.



Tap **Menu > Tools** and choose to send the current Web page link, view the page's properties, or set preferences.



To save an image from a Web page to your device, tap and hold the image then tap **Save Image**.

For more information about using Internet Explorer® Mobile, please go to: <http://www.microsoft.com/windowsmobile/help/pocketpc/browseinternet.msp>

## 10.8 Windows Live™

**Windows Live™** gives you full Internet experience on your device. It helps you to find information, pursue your interests, and get in touch with friends and family on the Internet easier.

Windows Live™ offers the following key features:

- **Live Search Bar**, which lets you search for information on the Web.
- **Live Messenger**, the next generation of MSN Messenger Mobile.
- **Live Mail**, the next generation of Hotmail.
- **Live Contacts**, your address book for storing Live Mail, Live Messenger and Hotmail contacts.

### Set up Windows Live™

The first time you use Windows Live™, sign in by using your Windows Live ID, which is your Windows Live Mail or Hotmail address, and password.

#### To set up Windows Live for the first time

1. Tap **Start > Programs > Windows Live**.
2. Tap **Sign in to Windows Live**.
3. On the next screen, tap the links to read the Windows Live™ Term of Use and the Microsoft Privacy Statement. After reviewing them, tap **Accept**.
4. Enter your Windows Live™ Mail or Hotmail address and password, select the **Save password** checkbox, then tap **Next**.
5. Choose whether or not to show Windows Live™'s search bar and applications on the Today screen then tap **Next**.

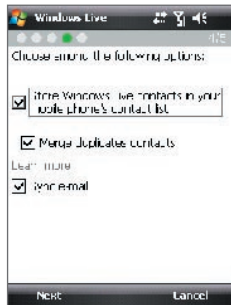


6. Choose what information you want to sync online with your device.

If you select **Store Windows Live contacts in your mobile phone's contact list**, your Windows Live contacts will be added to the contact list and to Live Messenger on your device.

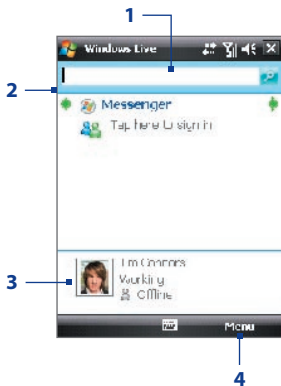
If you select **Sync e-mail**, your Windows Live Mail or Hotmail inbox messages will be downloaded to your device.

7. Tap **Next**.
8. After synchronization is complete, tap **Done**.



## The Windows Live™ interface

On the main interface of Windows Live™, you will see a search bar, navigation bar, and an area where you can customize to show your picture.



- 1 This is the Live Search Bar.
- 2 Tap the Left or Right arrow to switch between Windows Live Messenger, Live Mail, and Sync status.
- 3 Tap to access Windows Live Messenger settings.
- 4 Tap **Menu** to access and change settings.

**Tip** If you chose to display the search bar and Windows Live™ applications on the Today screen when you were setting up Windows Live, you'll also see them on the Today screen: To show or hide them from the Today screen, open Windows Live and tap **Menu > Options > Today screen options**.

## Windows Live Messenger

With this mobile version of **Windows Live Messenger**, you enjoy many of the same cool features that you get from the desktop version, which include the following:

- Instant messaging via text and voice
- Multiple conversations
- Add emoticons
- Contact list with presence
- Send and receive files including photos
- Change status/display name
- View contacts by online status, groups, and more
- Send messages even when a contact is offline



**Note** Before you can use Windows Live Messenger, your device must be connected to the Internet. For information about setting up an Internet connection, see “Ways of Connecting to the Internet” in this chapter.

## Launch the messenger and sign in

### To open Windows Live Messenger

- Tap **Start > Programs > Messenger**; or
- On Windows Live™ or the Today screen, tap the Left or Right arrow until you see **Messenger**, then tap it.

### To sign in and out

1. Tap **Sign in** on the messenger screen.
2. If this is your first time to sign in, a message appears to inform you that your messenger contacts will be added to the contact list on your device. Tap **OK** to add them.  
Signing in may take several minutes, depending on your connection speed.
3. To sign out, tap **Menu > Sign Out**.

### To start and end conversations

1. In the contact list, select a contact then tap **Send IM** to open a message screen.
2. Enter your text message in the text entry area of the message screen.
3. To add an emoticon, tap **Menu > Add emoticon** then tap an icon from the list of emoticons.
4. Tap **Send**.
5. To end a conversation with the current contact, tap **Menu > End conversation**.

- Tips**
- To send a file, tap **Menu > Send**. You can choose to send a picture, voice clip or any file.
  - To invite one or more contacts to the conversation, tap **Menu > Options > Add participant**.
  - To send a voice message, tap **Voice Clip** on a message screen then start talking. After you have spoken a message, tap **Send**.

## Add Windows Live contacts

You can add new Windows Live contacts in Live Messenger or in Contacts.

### To add a Windows Live contact in Live Messenger

1. Tap **Menu > Add new contact**.
2. Enter the e-mail address of the contact, then tap **OK**.

### To add a Windows Live contact in Contacts

1. Tap **Start > Contacts**.
2. Tap **New** then tap **Windows Live**.



3. In the **IM** box, enter the e-mail address of the contact, which can be a Windows Live ID or any other e-mail address.

**Tip** You can fill in other information about the contact, if desired. This is not absolutely necessary if you will communicate with the contact only through Windows Live Messenger or Live Mail.

4. Tap **OK**.
5. Follow the remaining instructions to add the new contact to your Windows Live contact list.

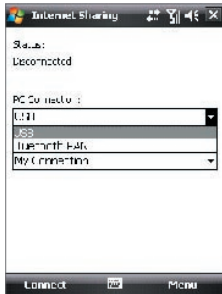
## 10.9 Using Your Device as a Modem (Internet Sharing)

**Internet Sharing** connects your PC or notebook computer to the Internet by using your device's data connection (GPRS or EDGE, for instance). You can choose to connect via USB or Bluetooth.

- Notes**
- Make sure your device has a SIM card installed, and your device has a GPRS or phone dial-up modem connection. If your device has not been set up with a data connection yet, tap **Menu > Connection Settings** on the Internet Sharing screen. For more information about setting up these connections, see "GPRS/3G" and "Dial-up" in this chapter.
  - If you want to use a USB cable connection, you must first install Windows Mobile Device Center or Microsoft ActiveSync version 4.5 or later on the computer.
  - If want to use a Bluetooth connection, make sure your computer has built-in Bluetooth capability. If your computer does not have Bluetooth, you can connect and use a Bluetooth adapter or dongle on your computer.
  - Before using Internet Sharing, disconnect from Windows Mobile Device Center or ActiveSync on your computer.
  - On your computer, run **3gnetopt.exe** from the Application Disc to optimize the connection speed between your device and computer.

### To set up your device as a USB modem

1. On your device, tap **Start > Programs > Internet Sharing**.
2. In the **PC Connection** list, select **USB**.
3. In the **Network Connection** list, select the name of the connection that your device uses to connect to the Internet.
4. Plug in the USB cable between your device and the computer.
5. Tap **Connect**.



### To use your device as a Bluetooth modem

For the computer to use the Internet connection of your device, activate Internet Sharing on your device, then set up a Bluetooth Personal Area Network (PAN) between the computer and your device.

1. On your device, turn on Bluetooth and set it to visible mode by following the steps in "To turn Bluetooth on and make your device visible".
2. Initiate a Bluetooth partnership from your device by following the steps in "To create a Bluetooth partnership."
3. Tap **Start > Programs > Internet Sharing**.
4. Select **Bluetooth PAN** as the **PC Connection**.
5. From the **Network Connection** list, select the name of the connection that your device uses to connect to the Internet.
6. Tap **Connect**.
7. On your computer, set up a Bluetooth Personal Area Network (PAN) with your device:

#### For Windows Vista:

- a. Click **Start > Control Panel > Network and Internet > Network and Sharing Center**.
- b. Click **Manage network connections** and then under **Personal Area Network**, double-click **Bluetooth Network Connection**.

- c. In the Bluetooth Personal Area Network Devices dialog box, select your phone, then click **Connect**.

**For Windows XP:**

- a. Tap **Start > Control Panel > Network Connections**.
- b. Under **Personal Area Network**, click the **Bluetooth Network Connection** icon.
- c. Under **Network Tasks**, click **View Bluetooth network devices**.
- d. In the Bluetooth Personal Area Network Devices dialog box, select your device, then click **Connect**.

**Note** If the Bluetooth adapter or dongle on your computer was installed using a third-party provided driver, open the Bluetooth software that came with the Bluetooth adapter/dongle and enable the adapter/dongle to be discovered by other devices. Refer to the Bluetooth adapter's documentation for more information.

8. On the Internet Sharing screen on your device, check if a connected status is displayed, which indicates that your computer has been successfully connected to the Internet using your device as a Bluetooth modem.

**To end the Internet connection**

- On the Internet Sharing screen, tap **Disconnect**.

## 10.10 Bluetooth

Bluetooth is a short-range wireless communications technology. Devices with Bluetooth capabilities can exchange information over a distance of about eight meters without requiring a physical connection.

### Bluetooth modes

Bluetooth on your device operates in three different modes:

- **On.** Bluetooth is turned on. Your device can detect other Bluetooth-enabled devices, but not vice versa.
- **Off.** Bluetooth is turned off. In this mode, you can neither send nor receive information using Bluetooth. Turn off Bluetooth when not in use to conserve battery power, or in places where using a wireless

device is prohibited, such as on board an aircraft and in hospitals.

- **Visible.** Bluetooth is turned on, and all other Bluetooth-enabled devices can detect your device.

**Note** By default, Bluetooth is turned off. If you turn it on, then turn off your device, Bluetooth also turns off. When you turn on your device again, Bluetooth automatically turns on.

### To turn Bluetooth on and make your device visible

1. On your device, tap **Start > Settings > Connections** tab > **Bluetooth > Mode** tab.
2. Select the **Turn on Bluetooth** and **Make this device visible to other devices** check boxes.
3. Tap **OK**.

## Bluetooth partnerships

A Bluetooth partnership is a relationship that you create between your device and another Bluetooth-enabled device in order to exchange information in a secure manner.

### To create a Bluetooth partnership

1. On your device, tap **Start > Settings > Connections** tab > **Bluetooth**.
2. On the **Devices** tab, tap **Add new device**. Your device searches for other Bluetooth devices and displays them in the box.
3. Tap the desired device name in the box, then tap **Next**.
4. Specify a passcode to establish a secure connection. The passcode can be 1 up to 16 characters.
5. Tap **Next**.
6. Wait for the paired device to accept the partnership. The receiving party needs to enter the same passcode that you specified.
7. The name of the paired device is then displayed. You may edit and enter a new name for that device.
8. Select the check boxes of services that you want to use from the paired device.
9. Tap **Finish**.

**Note** Creating a Bluetooth partnership between two devices is a one-time process. Once a partnership is created, the devices can recognize the partnership and exchange information without entering a passcode again.

### To accept a Bluetooth partnership

1. Ensure that Bluetooth is turned on and in visible mode.
2. Tap **Yes** when prompted to establish a partnership with the other device.
3. Enter a passcode (the same passcode that is entered on the device requesting the partnership) to establish a secure connection. The passcode must be between 1 and 16 characters.
4. Tap **Next**.
5. Tap **Finish**. You can now exchange information with the paired device.

- Tips**
- To rename a Bluetooth partnership, tap and hold the partnership's name on the **Devices** tab of the Bluetooth Settings screen, then tap **Edit**.
  - To delete a Bluetooth partnership, tap and hold the partnership's name on the **Devices** tab, then tap **Delete**.


### Connect a Bluetooth hands-free or stereo headset

For hands-free phone conversations, you can use a Bluetooth hands-free headset such as a car kit with your device. Your device also supports A2DP (Advanced Audio Distribution Profile) which allows you to use a Bluetooth stereo headset for hands-free phone conversations and for listening to stereo music.

#### To connect a Bluetooth hands-free or stereo headset

1. Make sure that both your device and the Bluetooth headset are turned on and within close range, and that the headset is visible. Refer to the manufacturer's documentation to find out how to set the headset in visible mode.
2. Tap **Start > Settings > Connections** tab.
3. Tap **Bluetooth > Devices** tab > **Add new device**. Your device searches for other Bluetooth-enabled devices and displays them.

4. Tap the name of the Bluetooth headset, then tap **Next**.
5. Enter the passcode of the Bluetooth headset, then tap **Next**.
6. Make sure the **Hands Free** check box is selected. If you have a Bluetooth stereo headset, also make sure **Wireless Stereo** is selected.
7. Tap **Finish**.

While the Bluetooth stereo headset is connected, the **Headset** icon () will appear on the title bar.

**Note** If the Bluetooth stereo headset becomes disconnected, turn the headset on and repeat steps 1 to 3 above. Tap and hold the name of the Bluetooth stereo headset and tap **Set as Wireless Stereo**.



## Beam information using Bluetooth

You can beam information, such as contacts, calendar items, and tasks, as well as files from your device to your computer or to another Bluetooth-enabled device.

**Note** If your computer does not have built-in Bluetooth capability, you need to connect and use a Bluetooth adapter or dongle on your computer.

### To beam information from your device to a computer

1. Turn on Bluetooth on your device, and make your device visible. For information about this, see “To turn Bluetooth on and make your device visible”.
2. Next, set Bluetooth on your computer to visible mode, create a Bluetooth partnership, then enable your computer to receive Bluetooth beams.

**Note** If the Bluetooth adapter or dongle on your computer was installed using a third-party provided driver, open the Bluetooth software that came with the Bluetooth adapter/dongle and enable the adapter/dongle to be discovered by other devices. Refer to the Bluetooth adapter’s documentation for more information.

If your computer has **Windows Vista** or **Windows XP SP2** and your computer's Bluetooth adapter is supported by your Windows version, do the following steps:

- a. On your computer, open **Bluetooth Devices** from the Control Panel then click the **Options** tab.
- b. For **Windows Vista**, select **Allow Bluetooth devices to find this computer**.  
For **Windows XP**, select **Turn discovery on** and **Allow Bluetooth devices to connect to this computer**.
- c. Create a Bluetooth partnership between your device and computer. For information about creating a partnership, see "Bluetooth partnerships".
- d. In the **Options** tab of **Bluetooth Devices**, select **Show the Bluetooth icon in the notification area**.
- e. To enable your computer to receive Bluetooth beams, right-click the Bluetooth icon at the bottom-right of your computer screen and select **Receive a File**.
3. Now you are ready to beam. On your device, select an item to beam. The item can be an appointment in your calendar, a task, a contact card, or a file.
4. To beam a contact, tap **Menu > Send Contact > Beam**.  
To beam other types of information, tap **Menu > Beam [type of item]**.
5. Tap the device name to which you want to send the beam.
6. If you beamed a calendar, task, or contact item to your computer and it is not automatically added to Outlook, select **File > Import and Export** in Outlook to import it.

To beam information to a Bluetooth-enabled device such as another Windows Mobile powered device, follow steps 1 to 5 in the above procedure.

- Tips**
- The default folder on your computer where beamed items are stored may be C:\Documents and Settings\your\_username\My Documents in Windows XP or C:\Users\your\_username\My Documents in Windows Vista.

- For your device to receive Bluetooth beams, tap **Start > Settings > Connections** tab > **Beam** and make sure the **Receive all incoming beams** check box is selected.

## Bluetooth Explorer and Bluetooth file sharing

**Bluetooth Explorer** searches for other Bluetooth devices that have file sharing enabled and lets you access their Bluetooth shared folder. You can copy files from and to their shared folder, and create subfolders in it. When you enable **Bluetooth file sharing** on your device, other Bluetooth-enabled devices will also be able to access your Bluetooth shared folder.

### To enable Bluetooth Explorer and Bluetooth file sharing on your device

1. Tap **Start > Settings > Connections** tab > **Bluetooth > FTP** tab.
2. Select the **Enable Bluetooth Explorer** check box. This makes the **\Bluetooth** device folder visible in the File Explorer.
3. Select the **Enable File Sharing** check box.

You can use the default Bluetooth shared folder, or tap **Browse** to use another folder as your shared folder.

### To use Bluetooth Explorer

1. Bluetooth Explorer is integrated with the File Explorer program. You can open it by tapping **Start > Programs > Bluetooth Explorer** or by tapping Down arrow (▼) on the upper left of File Explorer then tapping **Bluetooth**.
2. Bluetooth Explorer then scans for other Bluetooth devices that have file sharing enabled. From the list, tap to select a Bluetooth device you want to connect to. You may need to enter a passcode in order for you to connect to the selected device.





3. If there are files contained in the Bluetooth shared folder on the other device, you will be able to see them on the Bluetooth Explorer screen. Select one or more files, then tap **Menu > Edit** and choose to cut or copy the files.
4. Tap **Up** twice.
5. Navigate to the folder where you want to paste the files on your device, then tap **Menu > Edit > Paste**.

## Print files via Bluetooth

Connect your device to a Bluetooth printer to print contact information, appointment details, messages, and other file types.

**Note** You can print files in the **.txt**, **.jpg**, **.xhtml**, **.vcf**, **.vcs** file formats.

Before you start printing, make sure to turn on the Bluetooth printer and to turn on Bluetooth on your device. To turn on Bluetooth, tap **Start > Programs > Comm Manager** and then tap the **Bluetooth** button.

### To print contact information

1. Tap **Start > Contacts** and then select the contact whose information you want to print.
2. Tap **Menu > Print via Bluetooth**.
3. Tap **Menu > Search Device**. Your device starts to search for Bluetooth devices.
4. Select the Bluetooth printer and tap **Menu > Send File**.
5. Set the printing options you want and then tap **Print**.

### To print a calendar appointment

1. Tap **Start > Calendar** and then select the appointment whose details you want to print.
2. Follow steps 2 to 5 in the "To print contact information" procedure.

### To print a message

1. Tap **Start > Messaging** and then select the messaging account where the message you want to print is located.
2. Select the message you want to print.
3. Follow steps 2 to 5 in the “To print contact information” procedure.

### To print a JPEG file

1. Do one of the following:
  - In Pictures & Videos, select the JPEG file and then tap **Menu > Print via Bluetooth**.
  - In File Explorer, tap and hold the JPEG file and then on the menu, tap **Print via Bluetooth**.
2. Follow steps 3 to 5 in the “To print contact information” procedure:

# Chapter 11

## Experiencing Multimedia

**11.1 Camera**

**11.2 Camera Album**

**11.3 Pictures & Videos**

**11.4 Windows Media® Player Mobile**

**11.5 Streaming Media**

**11.6 Flash Lite Player**

**11.7 Audio Manager**

**11.8 Audio Booster**

## 11.1 Camera

Taking photos and recording video clips along with audio are easy with your device's built-in camera.

### To open the Camera screen

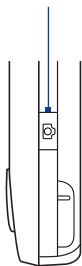
- Press the CAMERA button on your device; or
- Tap **Start > Programs > Camera**.

The screen orientation automatically switches to landscape mode when you open Camera.

### To exit the Camera

- Tap the **Exit** icon (  ) on the Camera screen.

CAMERA button



## Capture modes

The camera on your device allows you to capture pictures and video clips by using various built-in modes with flexibility. The Camera mode is set to the **Photo** capture mode by default. The upper left corner of the screen displays the active capture mode.









### To change the capture mode

Tap to change the capture mode.



You can also press NAVIGATION right or left to change the capture mode.

The available capture modes of the camera are as follows:

Icon	Capture Mode
	<b>Photo:</b> Captures standard still images.
	<b>Video:</b> Captures video clips, with or without accompanying audio.
	<b>MMS Video:</b> Captures video clips suitable for sending with MMS messages.
	<b>Contacts Picture:</b> Captures a still image and gives you the option to immediately assign it as a Photo ID for a contact.
	<b>Panorama:</b> Captures a sequence of still images continuously in one direction, and allows stitching of all the images to create a panoramic view of a scenery.
	<b>Picture Theme:</b> Captures still images and places them within frames.
	<b>Sports:</b> Captures consecutive photo shots (3, 5, 7, or 10).
	<b>Burst:</b> Captures a sequence of still images (maximum 30) as long as the CAMERA button on the device or the ENTER button on the NAVIGATION CONTROL is kept pressed.

**Note** When using the 2nd camera to capture, you can only use Photo, Video, MMS Video, Contacts Picture, and Picture Theme modes.

### File formats supported

Using the available capture modes, the camera in your device captures files in the following formats:

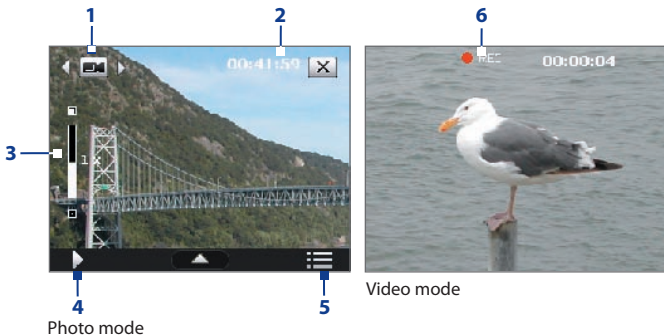
Capture type	Format
<b>Still image / Contacts Picture / Panorama / Sports / Burst</b>	JPEG
<b>Video / MMS Video</b>	H.263 (.3gp) ; MPEG-4 (.mp4)

## Camera controls

- Press CAMERA or ENTER to take a photo or contacts picture.
- Press CAMERA or ENTER to start recording video; press it again to stop recording.
- Press CAMERA or ENTER each time when taking photos for a picture theme or panorama.
- To take consecutive shots in Sports mode, press CAMERA or ENTER shortly, then move your device to follow the movement of your subject.
- Press and hold the CAMERA button or the ENTER button when taking consecutive shots in Burst mode.

## Onscreen controls and indicators

The onscreen controls and indicators disappear after about 3 seconds. To make the controls and indicators reappear, touch or tap the screen.



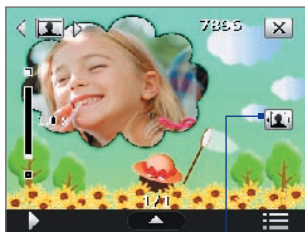
- 1 Mode Switching control.** Tapping the left/right arrow (◀/▶) on the screen allows you to switch the capture mode.
- 2 Remaining information indicator.** In Photo, Contacts Picture, Picture Theme, Sports, and Burst modes, this shows the remaining, available shots of pictures based on current settings. In Video and MMS Video

modes, this shows the remaining duration that can be recorded. While recording video, this shows the recorded duration.

- 3 Zoom control.** Tapping  /  on the screen allows you to zoom in or zoom out.

**Note** This control only appears when zooming is supported by the **Resolution** you have selected.


- 4 Album.** Tap to open Camera Album. See “Camera Album” for details.  
**5 Menu.** Tap to open the Camera Settings screen.  
**6 Recording indicator.** This shows a red, flashing indicator while video recording is in progress.



Picture Theme mode



Sports mode

- 7 Template Selector icon.** In Picture Theme mode, tap to toggle among the different templates.
- 8 Progress indicator.** In Picture Theme, Sports and Burst modes, this shows the number of consecutive shots.
- 9 Exit.** Tap  to exit the Camera program.

## Zooming

Before capturing a still image or a video clip, you can zoom in to make the object in focus move closer or zoom out to make the object move farther away.

**Note** The zoom control only appears onscreen when zooming is supported by the **Resolution** you have selected.

### To zoom in

- Press NAVIGATION up or tap 

### To zoom out

- Press NAVIGATION down or tap 

The camera zoom range for a picture or a video clip depends on the capture mode and capture size. The following table is a summary.

Capture mode	Capture size setting	Zoom range
<b>Photo</b>	2M (1600 x 1200)	No zooming available
	1M (1280 x 960)	1.0x to 2.0x
	Large (640 x 480)	1.0x to 2.0x
	Medium (320 x 240)	1.0x to 4.0x
	Small (160 x 120)	1.0x to 8.0x
<b>Video</b>	CIF (352 x 288)	1x and 2x
	Large (320 x 240)	1x and 2x
	Medium (176 x 144)	1x and 2x
	Small (128 x 96)	1x and 2x
<b>MMS Video</b>	Medium (176 x 144)	1x and 2x
	Small (128 x 96)	1x and 2x
<b>Contacts Picture</b>	Large (640 x 480)	1.0x to 2.0x
	Medium (320 x 240)	1.0x to 4.0x
<b>Picture Theme</b>	Determined by the current template	Depends on the size of the template currently loaded



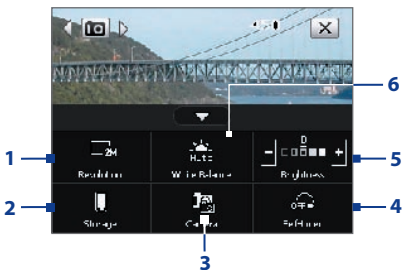
Capture mode	Capture size setting	Zoom range
<b>Panorama</b>	Large (640 x 480)	1x and 2x
	Medium (320 x 240)	1x, 2x and 4x
<b>Sports</b>	Large (640 x 480)	1x and 2x
	Medium (320 x 240)	1x, 2x and 4x
<b>Burst</b>	Large (640 x 480)	1x and 2x
	Medium (320 x 240)	1x, 2x and 4x

For capture size settings and zoom ranges when using the 2nd camera, please refer to the online help.











## Quick Settings Panel

The Quick Settings Panel provides a quick way of adjusting the most common camera settings. Tap on the screen to open the Quick Settings Panel. Keep tapping a button on the panel, for instance, Resolution, to cycle through the available settings.

**Note** The available settings on the menu depend on the Capture mode selected.



- Resolution.** Available resolutions include: . See the table in the previous page for the detailed capture sizes.
- Storage.** Tap to toggle between saving captured photos or video clips on the device memory ( ) or on the storage card ( ).

- 3 **Camera.** The camera icon ( /  / ) indicates the current camera being used. Tap to cycle through the different cameras.
- 4 **Self-timer.** Tap to set the Self-timer to **2 seconds**, **10 seconds**, or **Off** when in the Photo or Contacts Picture mode. When you press the CAMERA or ENTER button to capture a still image, it starts to count down, and then captures a still image after the assigned time.
- 5 **Brightness.** Tapping the minus/plus icon ( / ) decreases or increases the brightness level.
- 6 **White Balance.** White balance settings include: Auto () , Daylight () , Night () , Incandescent () , and Fluorescent () .





## The Review screen





Review screen


After taking a still image or recording a video clip, you can view the image or video clip on the **Review screen**.

You can also tap the following icons at the bottom of the Review screen:

Icon	Function
 <b>Back</b>	Go back to the live Camera screen.
 <b>Delete</b>	Remove the captured image or video.
 <b>Send</b>	Send via e-mail or MMS.
 <b>View</b>	View the image in the Camera Album program, or play the captured video in Windows Media® Player.

Icon	Function
 <b>Assign to Contacts</b>	Associate the photo to a selected contact.
 <b>Browse</b>	After capturing in Sports or Burst mode, the total number of consecutive shots is shown in the top right corner of the Review screen. Tap the up/down arrow to browse through the sequence of photos.

## Camera settings

Tap the Menu icon () to open the Camera Settings screen. The Camera Settings screen allows you to configure capture and camera settings.

The Camera settings consist of two tabs: **Capture Settings** and **Advanced**. Use the Capture Settings tab to adjust options for your selected capture mode; Use the Advanced tab to set the Camera program preferences.

You can either tap onscreen or press the Navigation Control buttons to navigate the Camera Settings screen.

### Capture Settings tab

The available options in this tab depend on the capture mode selected.

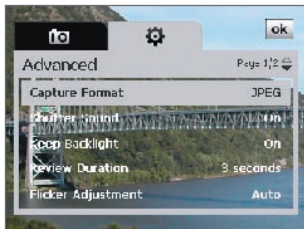


- **Effect.** Choose a special effect such as Grayscale, Sepia, etc., to apply to your photos or video clips.
- **Time Stamp** (Photo, Sports and Burst modes). Choose whether or not to include the shooting date and time on captured photos.
- **Template** (Picture Theme mode). Select a template.

- **Capture Speed** (Burst and Sports modes). This determines the interval between shots. **Fast** captures consecutive shots at the shortest interval.
- **Snapshots** (Sports mode). Select the number of consecutive shots to capture.
- **Direction** (Panorama mode). Choose in what direction images will be stitched in a panorama.
- **Stitch Count** (Panorama mode). Select the number of snapshots to be taken and stitched into a panorama.
- **Quality**. Select the JPEG image quality level for all captured still images. Choose from **Basic**, **Normal**, **Fine**, and **Super Fine**.
- **Metering Mode**. Select a metering mode to allow the camera to measure the amount of light and calculate the best-fit exposure value before capturing. Choose either **Center Area** to measure light using the center area of the image or **Average** to measure light using the area all around the image.
- **Storage**. Select where you want to save your files. You can either save the files to the main memory or to a storage card.

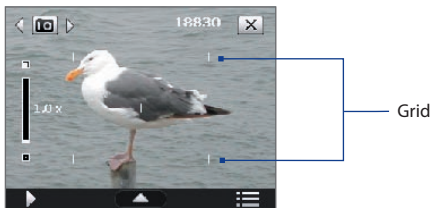
### Advanced tab

The available options in this tab depend on the capture mode selected.



- **Capture Format**. Select the desired file format.
- **Shutter Sound**. Choose whether or not you want the camera to make a shutter sound when you press the ENTER or CAMERA button.

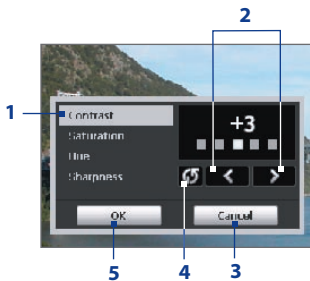
- **Grid** (Photo mode only). Choose whether or not to show a grid on the Camera screen. Showing a grid helps you frame and center your subject more easily and accurately.



- **Keep Backlight.** Turn the backlight on or off. This overrides your device backlight settings while you are using the camera.
- **Review Duration.** Set a time length for displaying the captured image/video on the Review screen. Select **No Limit** if you do not want to impose a time limit. Select **No Review** to immediately return to the live Camera screen after capturing and saving.
- **Flicker Adjustment.** When taking indoor shots, flicker on the camera screen may be caused by inconsistencies between the vertical scan rate of the camera display and the flicker frequency of fluorescent lighting. To reduce flicker, you can change the flicker adjustment setting to **Auto** or to the proper frequency (**50Hz** or **60Hz**) of the country where your device is being used.
- **Record with Audio.** Select **On** to record audio with the captured video clips, or select **Off** to capture video without audio.
- **Prefix.** When **Default** is selected as the prefix, the file name of each new captured file is set to "IMAGE" or "VIDEO" followed by a sequential number, for example: IMAGE\_001.jpg. You may also choose to name files using either the current **Date** or **Date & Time** as the prefix.
 

**Note** If you set the Camera to save captured photos to a storage card, the prefix cannot be selected. Captured photos will be named using the convention IMAGnnnn.jpg (where 'nnnn' is the counter) which is the DCIM (Digital Camera Images) naming standard, and will be saved to the \DCIM\100MEDIA folder on the storage card.
- **Counter.** To reset the file naming counter back to 1, tap **Reset**.

- **Recording Limit.** Set the duration or file size for recording video.
- **Template Folder** (Picture Theme mode). By default, templates are stored in the **\My Documents\Templates** folder on the device's **Main Memory**. If you transferred some templates to a storage card (via File Explorer), set this option to **Main + Card** to specify that templates are located in both the main memory and the storage card.
- **Image Properties.** This option allows you to adjust the camera display properties, such as **Contrast**, **Saturation**, **Hue**, and **Sharpness**.



- 1 Tap a property to adjust.
- 2 Tap the left/right arrow icon or press NAVIGATION left/right to increase/decrease the value.
- 3 Tap to close the submenu without applying and saving the changes.
- 4 Tap to reset all properties to their default.
- 5 Tap to save the settings.

- **Show Reminder** (Contacts Picture mode). Select **On** if you want the Camera to always display a message that confirms whether or not to assign the captured picture to a contact.
- **Help.** Tap to open the Camera program help file.
- **About.** Tap to view information about the Camera program.



## 11.2 Camera Album

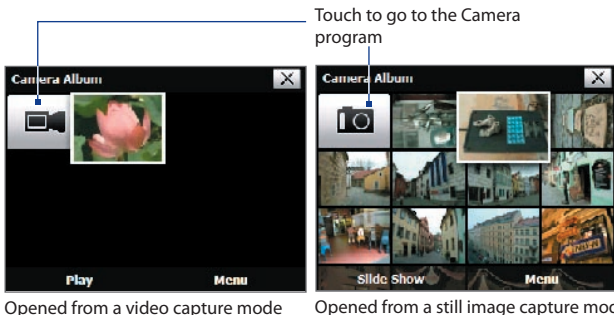
View your images and videos that you captured using the Camera program in Camera Album. Camera Album offers a host of features that let you rotate the image, view your images as a slide show, use the image as a contact picture, and more.

**Note** Only files supported by the Camera program are displayed in Camera Album. To know which file formats are supported, see “File formats supported” in the Camera section.

### To open Camera Album

Do one of the following:

- Tap **Start > Programs > Camera Album**.
- In the Touch Cube, touch **Photos** or **Videos**.
- In the Camera program, tap . Depending on the capture mode you are in, Camera Album will either show still images or video files in your device. For example, if you are in Photo mode, only still images will be shown in Camera Album. To view video files, switch first to Video or MMS Video mode before tapping .

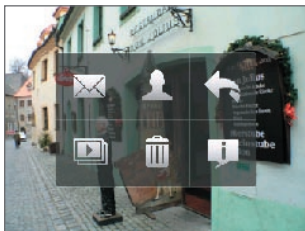








**Tip** If you have a lot of images in your device, scroll up or down by sliding your finger upward or downward the screen.

### To view an image

On the main Camera Album screen, touch the thumbnail of the image you want to view. While viewing the image, you can zoom in or rotate the image. To learn how to zoom and rotate the image, see the succeeding procedures.

While viewing an image, touch the screen to pop up the onscreen menu.

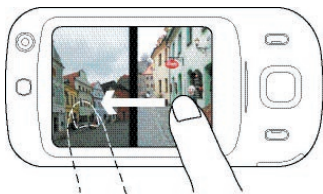


Icon	Function	Icon	Function
	Touch to send the image via one of your Messaging accounts.		Touch to start the slide show.
	Touch to assign the image as a contact picture.		Touch to delete the image.
	Touch to return to the main Camera Album screen.		Touch to show you how to use gestures when viewing photos.

### To go to the next image

Go to the next image by sliding your finger across the screen from right to left.

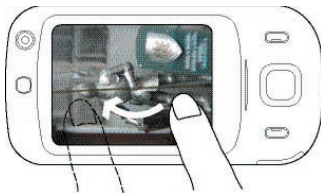
Go back to the previous image by sliding your finger from left to right.



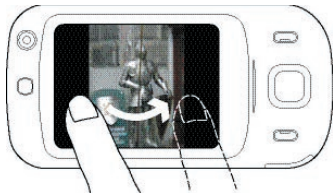


### To rotate the image

1. View the image you want to rotate.
2. With your finger, make a half-circle motion on the screen.



Slide your finger clockwise to rotate the image 90 degrees clockwise.



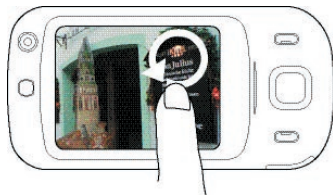
Slide your finger counter-clockwise to rotate the image 90 degrees counter-clockwise.

### To zoom in or out of an image

While viewing an image, make a full circle motion on the screen with your finger.



Slide your finger clockwise on an area to zoom in on that area.



Slide your finger counter-clockwise to zoom out.

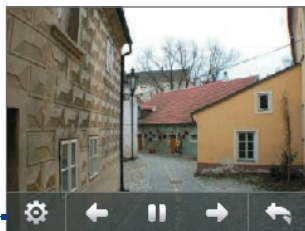
#### Tips

- When you zoom in on an image, you can double tap the screen to automatically zoom out and fit the image to the screen.
- When you zoom in on an image, touch and hold the screen so you can pan the image.

### To view the images as a slide show

On the Camera Album screen, touch **Slide Show**. While viewing the slide show, touch the screen to show playback controls.

Touch to open the slide show options where you can set the transition effect to use, time per slide, and orientation of the images.



Touch to return to the main Camera Album screen.

Touch to go back to the previous image.

Touch to play or pause slideshow playback.

Touch to go to the next image.

### To play back video files


On the main Camera Album screen, touch the thumbnail of the video file you want to play back. Windows Media Player then plays back the file.

**Tip** You can also select the video file and tap **Play** to play back the file in Windows Media Player.

### To close Camera Album and go to the Camera program

Go back to the main Camera Album screen and touch  or .

### To close Camera Album

When you open Camera Album from **Start > Programs**, you can close Camera Album by going back to the main Camera Album screen and tapping .

**Note** When you open Camera Album from the Camera program, touching  takes you back to the Camera program.

## 11.3 Pictures & Videos

**Pictures & Videos** allows you to manage the following types of media files on your device:

File Type	File Extensions
<b>Image</b>	*.bmp, *.jpg, *.gif, *.png
<b>GIF animation</b>	*.gif
<b>Video</b>	*.avi, *.wmv, *.mp4, *.3gp, *.3g2
<b>Audio</b>	*.wma

### To open Pictures & Videos

- Tap **Start > Programs > Pictures & Videos**.

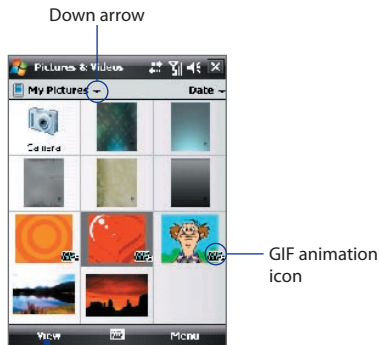
### To copy media files to your device

- Copy pictures and GIF animation files from your PC or a storage card to the My Pictures folder on your device.
- Copy video files to the My Videos folder.

For more information about copying and managing files on your device, see Chapter 9.


### To view pictures

1. The images in the My Pictures folder appear as thumbnails by default.
2. Select a picture and tap **View**. If you cannot find a picture in the default My Pictures folder, go to another folder by tapping the Down arrow (▼).




Tap to view the selected image.

### To play GIF animation files

1. Select a GIF animation file (marked with a  icon) and tap **View**.
2. The GIF Animation program then opens and plays the animation.

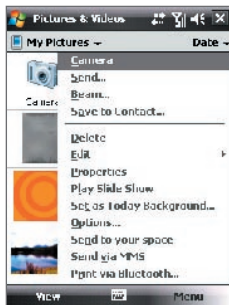
### To play videos

1. By default, the contents of the My Pictures folder will be shown.
2. To find the video clips that you captured, tap the down arrow (▼) next to the My Pictures folder and tap **My Documents > My Videos**. Video clips are displayed as thumbnails by default, which appear with a media icon ().
3. Tap to select a video and play it in Windows Media® Player Mobile.

## Pictures & Videos menu

Select a media file and then tap **Menu** to choose from a list of options that you can do with the selected media file.

You can send the selected media file via one of your messaging accounts or beam it to another device. If you selected a picture, you can associate it to a contact, set it as your Today screen background, send it to your Windows Live Space account, and more. You can also view the images in the My Pictures folder as a slide show.



**Note** The available menu options depend on the selected media file.

### To edit a picture

You can rotate, crop, and adjust the brightness and color contrast of your pictures.

1. On the Pictures & Videos screen, tap the picture you want to edit.
2. Tap **Menu > Edit**, and do any of the following:
  - To rotate a picture 90 degrees clockwise, tap **Rotate**.

- To crop a picture, tap **Menu > Crop**. Next, tap and drag to select the area to crop. Tap inside the box to crop, or tap outside the box to cancel cropping.
- To adjust the brightness and contrast levels of a picture, tap **Menu > Auto Correct**.

**Note** To undo an edit, tap **Menu > Undo**. To cancel all unsaved edits you made to the picture, tap **Revert to Saved**.

## 11.4 Windows Media® Player Mobile

You can use Windows Media® Player Mobile to play digital audio and video files that are stored on your device or on a network, such as on a Web site.

Video File Formats Supported	File Extensions
Windows Media Video	.wmv, .asf
MPEG4 Simple Profile	.mp4
H.263	.3gp, .3g2
H.264	.mp4, .3gp, .3g2, .m4v
Motion JPEG	.avi

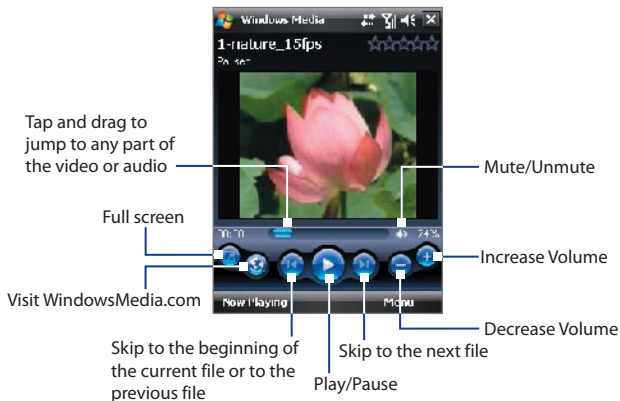
Audio File Formats Supported	File Extensions
Windows Media Audio	.wma
WAV	.wav
MP3	.mp3
MIDI	.mid, .midi, .rmi
AMR Narrow Band	.amr
AMR Wide Band	.awb
AAC, AAC+ and eAAC+	.aac, .mp4, .m4a
MPEG4 audio	.mp4, .m4a
QCELP	.qcp

### To open Windows Media® Player Mobile

- Tap **Start > Programs > Windows Media**.

## About the controls

The following are available controls on the Windows Media® Player Mobile.



## About the screens and menus

Windows Media® Player Mobile has three primary screens:

- **Playback screen.** The screen that displays the playback controls (such as Play, Pause, Next, Previous, and Volume) and the video window. You can change the appearance of this screen by choosing a different skin.
- **Now Playing screen.** The screen that displays the Now Playing playlist. This special playlist indicates the current file being played and any files that are “queued up” to play next.
- **Library screen.** The screen that lets you quickly find your audio files, video files, and playlists. It contains categories such as My Music, My Videos, My TV, and My Playlists.

At the bottom of each screen, you can open a **Menu**. The commands on this menu vary, depending upon which screen you are viewing. For more information about the commands in these menus, see Help on your device.

## Synchronize video and audio files

Use the latest version of Windows Media® Player on your PC to synchronize digital media files from your PC to your device. This ensures that protected files and album art (for skins) are copied to your device correctly.

### To synchronize content to your device automatically

1. On your PC, start Windows Media® Player and then connect your device to your PC.
2. In the Device Setup Wizard, select **Yes, search my computer now**.
3. You will then see the name of your device (or “Storage Card” if you have inserted one on your device). Click **Finish**.
4. On the left panel of Windows Media® Player, right-click the name of your device then click **Set Up Sync**.

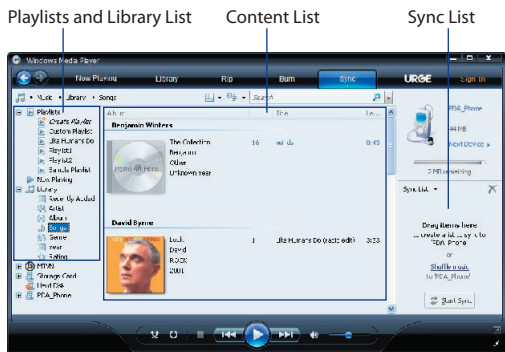
**Note** To set up media synchronization on a storage card, right-click **Storage Card** in the left panel of Windows Media® Player, then click **Set Up Sync**.

5. On the Device Setup dialog box, select **Sync this device automatically**.
6. Select the playlist(s) that you want to sync between your PC and device, then click **Add**.
7. Click **Finish**.

The files begin synchronizing to your device. The next time you connect your device to your PC while Windows Media® Player is running, synchronization will start automatically.

### To synchronize content manually to your device

1. If you have not set up media synchronization between your device and PC, follow steps 1 to 3 in “To synchronize content to your device automatically”.
2. Click the **Sync** tab on the Windows Media® Player of your PC. Select a Playlist or a Library on the left panel of the Windows Media® Player.
3. From the Content List, drag the media files that you want to sync to your device and drop them to the Sync List.



4. Click **Start Sync** to start synchronizing the selected files to your device.

- Notes**
- Use Windows Media® Player 11 or higher on your PC to synchronize media files to your device.
  - Audio files copy faster if Windows Media® Player is configured to automatically set the quality level for audio files copied to your device. For more information, see the Windows Media® Player Help.

## Play media

Use the Library to find and play songs, videos, and playlists that are stored on your device or removable storage card.

### To update the Library

1. If you are not on the Library screen, tap **Menu > Library**.
2. On the Library screen, tap the Library arrow (near the top of the screen), then tap the media storage that you want use, for example, Storage Card.
3. In most cases, Windows Media® Player Mobile automatically updates the library. However, you can manually update the library to ensure that it contains new files that you recently copied to your device or storage card. Tap **Menu > Update Library** to manually update the library list.



### To play video and audio files on your device

1. Select a category (for example, My Music or My Playlists).
2. Tap and hold the item that you want to play (such as a song, album, or artist name), then tap **Play**.

- Tips**
- To play a media file that is stored on your device but is not in a library, on the Library screen, tap **Menu > Open File**. Tap and hold the item that you want to play (such as a file or a folder), then tap **Play**.
  - To play a media file from the Internet or a network server, tap **Menu > Library** then tap **Menu > Open URL**.

### Playlists

In Windows Media® Player Mobile, you can create a new playlist by saving the current Now Playing playlist and giving it a new name.

#### To save a new playlist

1. If you are not on the Library screen, tap **Menu > Library**.
2. Tap to select a category (for example, My Music or My Playlists).
3. Select a media file that you want, then tap **Menu > Queue Up**. This adds the file to the Now Playing list.

Repeat this step until you have added all desired media files to the Now Playing list.

**Note** You cannot select multiple files simultaneously.

4. After adding the media files, tap **Menu > Now Playing**.
5. On the Now Playing screen, tap **Menu > Save Playlist**.
6. Enter the playlist name then tap **Done**.
7. To play back the playlist you created, tap My Playlists in the Library, select your playlist, then tap **Play**.

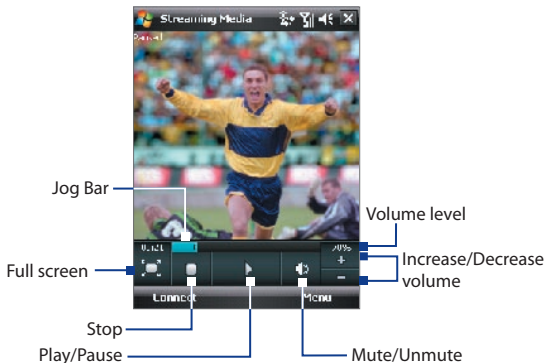
### Troubleshooting

If you encounter a problem while using the Windows Media® Player Mobile, a number of resources are available to help you troubleshoot the issue.

For more information, see the Troubleshooting Windows Media® Player Mobile page at the Microsoft Web site (<http://www.microsoft.com/windows/windowsmedia/player/windowsmobile/troubleshooting.aspx>).

## 11.5 Streaming Media

**Streaming Media** lets you stream live broadcasts or on-demand media content from the Web. The media is sent in a continuous stream to your device and is played as it arrives, along with the audio.



The Streaming Media program allows you to play **3GP** and **MPEG-4** files. It also supports playback of **SDP** (Session Description Protocol) files.

### To access streaming content via Internet Explorer

In Internet Explorer, you can open a Web page containing RTSP (Real Time Streaming Protocol) links to streaming media content then play the content in the Streaming Media program.

1. Tap **Start > Internet Explorer**.
2. In the address bar, enter the URL address of the Web page that contains the RTSP link to the desired \*.3gp, \*.mp4, or \*.sdp file.
3. On the Web page, tap the RTSP link.
4. Streaming Media then automatically opens and starts playing the file. During playback, use the button controls to play/pause, zoom in or out, adjust the sound volume, and more.

### To stream media files directly on the Streaming Media Player

Streaming Media only supports RTSP links when you stream \*.3gp and \*.mp4 files directly on the program.

**Note** Before you launch the Streaming Media program, make sure that you are connected to the Internet.

1. Tap **Start > Programs > Streaming Media**.
2. From the program, tap **Connect**.
3. Enter the URL for the Web site (rtsp://) and the file name.
4. Tap **Connect**.
5. Streaming Media then starts playing the file. During playback, use the button controls to play/pause, zoom in or out, adjust the sound volume, and more.

### To view streaming video information

You can view the properties and general information of a streaming video clip, such as video codec, audio codec, dimension, frames, and duration of the video.

Tap **Menu > Properties** from the program.

### To configure streaming video connection settings

Tap **Menu > Options** to configure the following settings:


- **Connect via.** Choose whether you want to connect to the Internet or corporate network (intranet) to locate a streaming video clip.
- **UDP port range.** Specify a range of port numbers to use for streaming.
- **Media buffer.** Specify the memory space (in terms of duration) to allot for storing video and audio data while streaming media.

## 11.6 Flash Lite Player

**Flash Lite Player** lets you play back Flash Lite™ animation files, games, and other types of Flash Lite files on your device.

**Note** Flash Lite Player only supports playback of Flash Lite (not Flash) files.

### To open a Flash Lite File

1. Tap **Start > Programs > Flash Lite Player**.
2. Tap **Open** and locate the Flash Lite file (  ) you want to open.
3. Tap the file to open it.

Depending on the type of Flash Lite file you opened, you can use the NAVIGATION CONTROL and/or the hardware keyboard to use the file.

### To open a recently played back file

On the Flash Lite Player screen, tap **Menu > Recent Files**. Select the file you want to open and tap **Open**.

### To adjust the playback resolution

On the Flash Lite Player screen, tap **Menu > Quality** and then select a quality setting.

### To view a file in full screen

Depending on the file, Flash Lite Player may expand the file to fill the whole screen or hide the Title and bottom bars.

On the Flash Lite Player screen, tap **Menu > Full Screen**.

**Note** When in full screen mode, you can revert to normal view mode by tapping and holding an area on the screen and then on the menu, tap **Full Screen**.

## 11.7 Audio Manager

**Audio Manager** is a music browser and player in one. It gives you access to all the music files on your device, and allows you to easily browse for the music that you want to play by organizing music into categories such as title, artist, album, etc. You can also create playlists of your favorite songs and use the integrated **Music Player** to play them back.

### To launch Audio Manager

- Tap **Start > Programs > Audio Manager**.

**Notes**

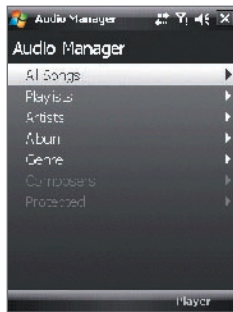
- Audio Manager searches for all music files stored on your device memory and memory card that have the following audio formats: MP3, WMA, AAC, and AAC+. It will search in the following locations:

Device:            My Music (including all subfolders)  
                       \My Documents (including all subfolders)  
 Memory card: \Storage Card (including all subfolders)

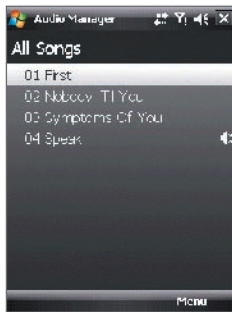
- Music files are categorized under **Artists, Album, Genre**, etc. if such metadata are found in the files.

### Library

On the Audio Manager's **Library** screen, an arrow that appears in an item indicates that there is a submenu available. Tap the item name to open the submenu.



Library: Main screen



Library: All Songs screen

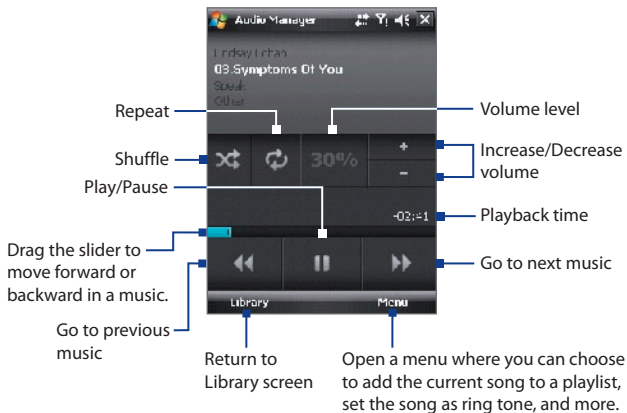
When you tap a category on the Library's Main screen, you will see more submenus which may have deeper levels of menus. For example, when you tap **Artists**, another level of submenus will be listed showing artist names. When you tap an artist name, more submenus showing album names will be displayed. Just keep opening the submenus until you reach the level where song titles can be selected for playback.

Music files that are protected by Digital Rights Management (DRM) will be listed under the **Protected** category. A lock icon shown before song titles indicates that the music files are protected. Select a file then tap **Info** if you want to view file information. A cross-marked lock icon shown before song titles indicates that the rights for the music files have expired, and you will not be able to play them. Tap **Delete** if you want to delete these files.

**Note** Audio Manager keeps track of the last submenu that you accessed. When you exit Audio Manager and open it again, it will display the last submenu that you were in. Keep tapping the submenu name at the top of the screen until you reach the Library's Main screen.

## Music Player


When you select a music in the Library, **Music Player** opens and automatically plays it. Use the available buttons to control the playback.

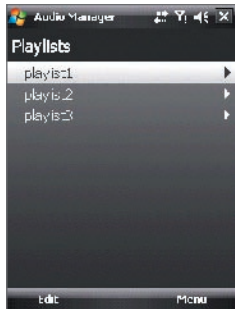


## Playlists

The Playlists screen shows the current playlists that are found on the device memory and memory card.

There are two types of playlists that will be shown on the Playlist screen:

- Windows Media® Player playlists.**  
 These are playlists that are in Windows Media® Player Mobile's Library (which is synchronized with Windows Media® Player on your computer), and they are indicated by the Windows Media® Player icon (  ). They can be played in Audio Manager's Music Player but cannot be edited.
- Custom playlists.** These are playlists that are created in Audio Manager and can be edited.



- Notes**
- Audio Manager will search for playlists in the following locations:  
 Device: \Playlists  
       \Application Data\HTC\AudioManager\playlists  
 Memory card: \Storage Card\Playlists
  - If a Windows Media® Player playlist contains a combination of music, video and image files, Audio Manager accesses the music files only and filters out the other media types.

### To create a playlist

- On the Library's Main screen, tap **Playlists**.
- On the Playlists screen, tap **Menu > New**.
- Enter a **Playlist name** then tap **OK**.
- On the Playlists screen, tap the playlist you have just created then tap **Edit**.
- Tap **Menu > Add**.
- Tap the check boxes to select the songs you want to add to the playlist, or tap **Menu > Select All** to choose all the songs.
- Tap **OK** thrice to return to the Playlists screen.

## To play back a playlist

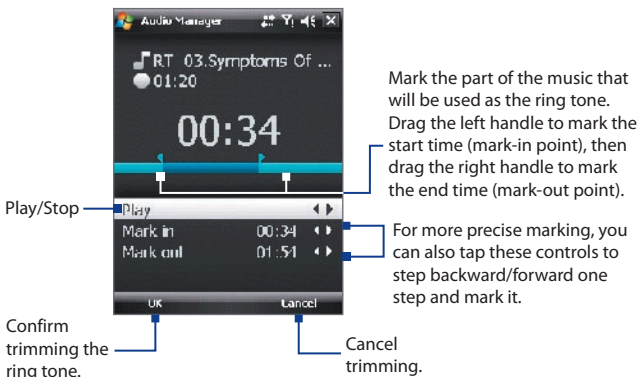
1. On the Playlists screen, tap to select a playlist.
2. Tap the first song in the selected playlist. Music Player automatically opens and starts playing the first song. After each song, the next one in the playlist will be played.

**Note** The content of playlists is not automatically updated when music files have been deleted from the device memory or memory card. Music Player will display a notification message when music files in a playlist cannot be found.

## Set music as ring tone

You can set your favorite music as a ring tone for your device.

1. Use the NAVIGATION CONTROL to select a song in the Library or tap a song to play it in Music Player, then tap **Menu > Set as Ring Tone**.
2. If the selected music is an MP3 file, tap **Trim** if you want to trim it first to make it shorter.



3. Tap **Set as Default Ring Tone**.

**Tip** If you only want to save the song to the ring tone folder for future use, tap **Save to Ring Tone Folder**. Later on, you can tap **Start > Settings > Personal tab > Phone** to set it as your ring tone.

4. A confirmation message is then displayed. Tap **OK**.



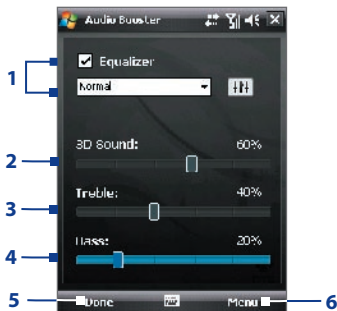
## 11.8 Audio Booster

**Audio Booster** enhances your music experience by providing you with controls for adjusting sound settings while you are listening to music. It adds 3D sound, treble and bass effects, and provides controls for adjusting them. It even has an equalizer with presets as well as a control panel for fine tuning sound.

### To access Audio Booster

Tap **Start > Programs > Audio Booster**.

**Note** You need to connect a headset to the device to open Audio Booster.



This control	Does this
1 <b>Equalizer</b>	Enables or disables the equalizer. Select the check box to enable the equalizer and to fine tune its settings, if desired. See "Equalizer" for more information.
2 <b>3D Sound</b>	Adds a three-dimensional effect to sound. Drag the slider to increase or decrease the effect. To disable the 3D effect, adjust the setting to 0%.
3 <b>Treble</b>	Adds a treble effect to increase the high tones in sound. Drag the slider to increase or decrease the effect. To disable the treble effect, adjust the setting to 0%.

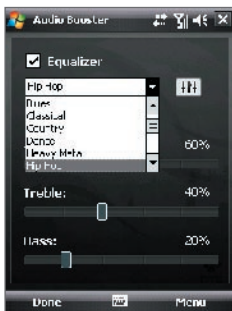
This control	Does this
<b>4 Bass</b>	Adds a bass effect to increase the low tones in sound. Drag the slider to increase or decrease the effect. To disable the bass effect, adjust the setting to 0%.
<b>5 Done</b>	Tap to apply the modified settings.
<b>6 Menu</b>	<ul style="list-style-type: none"> <li>Tap <b>Menu &gt; Cancel</b> to exit Audio Booster without applying the modified settings:</li> <li>Tap <b>Menu &gt; Reset</b> to change back to the default settings.</li> </ul>

## Equalizer


The **Equalizer** optimizes sound for a better listening experience. It provides preset moods, such as hip hop, jazz, rock, etc., and several enhancement presets that suit different types of music. It also has a 10-band graphic equalizer that lets you adjust the loudness of sound by frequency.

### To apply a preset

1. Select the **Equalizer** check box to enable the equalizer.
2. Tap the Equalizer drop-down menu, then select a desired preset.




### To create a custom equalizer preset

1. Select the **Equalizer** check box to enable the equalizer.
2. Tap .
3. Adjust the frequency bands to your desired values by dragging the equalizer controls. The selected values are indicated on top of the sliders.
4. Save your equalizer settings as a preset by tapping **Menu > Save as Preset**.
5. Enter a preset name then tap **Done**.

The preset you created will be added to the list box.



### To delete a custom equalizer preset

1. Select the **Equalizer** check box then tap .
2. Tap the Equalizer drop-down menu, then select the preset you want to delete.
3. Tap **Menu > Delete Preset**.

**Note** You can only delete custom equalizer presets. Equalizer presets that are pre-installed cannot be deleted.



# Chapter 12

## Managing Your Device

**12.1 Adding and Removing Programs**

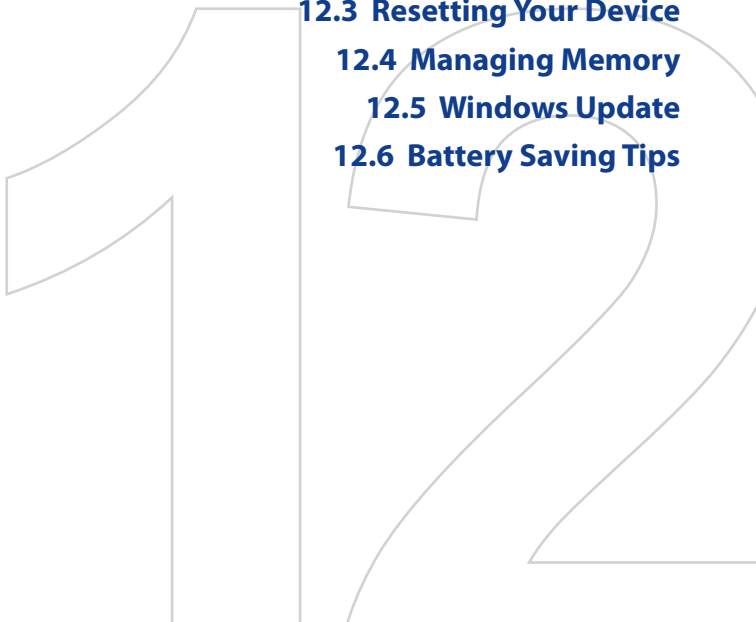
**12.2 Using Task Manager**

**12.3 Resetting Your Device**

**12.4 Managing Memory**

**12.5 Windows Update**

**12.6 Battery Saving Tips**



## 12.1 Adding and Removing Programs

Before you purchase additional programs for your device, make sure that they are compatible with your device.


### To add programs

1. Download the program to your PC (or insert the CD or disk that contains the program into your PC). You may see a single **\*.exe** file, a **\*.zip** file, a **Setup.exe** file, or several versions of files for different device types and processors. Be sure to select a program designed for your device and processor type.
2. Read any installation instructions or documentation that comes with the program. Many programs provide special installation instructions.
3. Connect your device to the PC.
4. Double-click the **\*.exe** file.


### To remove programs

1. Tap **Start > Settings > System tab > Remove Programs**.
2. In the **Programs in storage memory** list, select the program you want to remove, and tap **Remove**.

## 12.2 Using Task Manager

**Task Manager** lets you view and stop running programs, configure the  button, and enable the Quick Menu on the Today screen.

### To open Task Manager

- Tap the **Quick Menu** button on the top right corner of the Today screen to open the Quick Menu, then tap ; or
- Tap **Start > Settings > System tab > Task Manager**.

### To switch back to a running program

- Tap the program name in the Quick Menu; or
- On the Task Manager screen, tap and hold the program name in the **Running** tab, then tap **Activate**.

### To configure the Exit (X) button

You can configure the **Exit** button to shut down running programs when the button is tapped, or to just temporarily close the program screen but keep the program running.

1. On the Task Manager screen, tap the **Button** tab.
2. Select the **Enable the "X" button to end running programs** check box.  
**Note** When the **Enable the "X" button to end running programs** check box is not selected, tapping the **Exit** button will only close a program screen. The program is not ended and continues to run in the background.
3. Choose the action for shutting down programs (by tapping the X button, tapping and holding the button, or both).
4. Tap **OK**.

### To close running programs from the Task Manager

1. Tap the **Running** tab.
2. Do one of the following:
  - Select the check box of the programs that you want to close, and then tap **Stop Selected** to close them.
  - Tap **Stop All** to close all programs in the list.
  - Tap **Menu > Stop All but Selected** to close all programs except for those whose check boxes are selected.

**Tip** You can also close running programs from the Quick Menu on the Today screen. See "Quick Menu" in Chapter 1 for details.

### To add a running program to the exclusive list

If you add a running program to the **Exclusive Programs List**, it will not be closed when you tap **Stop Selected** or **Stop All** and will not be listed in the Quick Menu on the Today Screen.

1. On the Task Manager screen, tap the **Running** tab.
2. Tap and hold the program name in the list, then tap **Add Exclusive**.

**Tip** To remove a program from the exclusive list, tap the **Exclusive** tab, select the check box of that program, then tap **Remove**.

### To set the sorting preference for running programs in the Quick Menu

1. On the Task Manager screen, tap the **Advanced** tab.
2. Choose whether to sort according to **Program name** or **Memory usage**. The list will be sorted in ascending order.

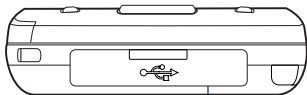
## 12.3 Resetting Your Device

### Soft reset

Occasionally, you may need to reset your device. A soft (or normal) reset of your device clears all active program memory and shuts down all active programs. This can be useful when your device is running slower than normal, or a program is not performing properly. A soft reset is also necessary after the installation of some programs. If a soft reset is performed when programs are running, unsaved work will be lost.

### To perform a soft reset

Open the rubber cover at the bottom of your device and then use the stylus to press the RESET button. Your device restarts and displays the Today screen.



RESET button

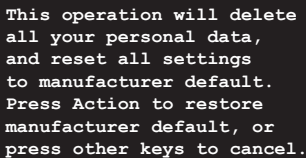


## Hard reset

You can also perform a hard reset (also known as a full reset). A hard reset should be performed only if a normal reset does not solve a system problem. After a hard reset, the device is restored to its default settings - the way it was when you first purchased it and turned it on. Any programs you installed, data you entered, and settings you customized on your device will be lost. Only Windows Mobile® software and other pre-installed programs will remain.

### To perform a hard reset

1. Press and hold the TALK and END buttons, and at the same time, use the stylus to press the RESET button at the bottom of your device.
2. Release the stylus, but continue pressing the TALK and END buttons until you see the following message on the screen:



```
This operation will delete
all your personal data,
and reset all settings
to manufacturer default.
Press Action to restore
manufacturer default, or
press other keys to cancel.
```

3. Release the TALK and END buttons, and then press ENTER on your device.

**Warning!** Your device will be set back to factory default settings. Please ensure any additional installed programs and/or user data have been backed up before a hard reset is performed.

**Important** If **Encrypt files placed on storage cards** is or was enabled before, then backup all files from the storage card **before** using Clear Storage, hard reset or updating the ROM system software. Otherwise you will no longer be able to access the encrypted files on the storage card. Use ActiveSync or Windows Mobile Device Center to transfer files between your storage card and computer. After the procedure, copy your files back to the storage card.

## Clear Storage

Another way of clearing the device storage and reset all settings back to factory default settings is to use the **Clear Storage** feature. You will lose all your data and files on the device storage when you use Clear Storage, so make sure to do a backup first.

1. Tap **Start > Settings > System tab > Clear Storage**.
2. Enter “1234” then tap **Yes**.

## 12.4 Managing Memory

To see how much memory is available for use, tap **Start > Settings > System tab > Memory**. On the **Main** tab, the amount of memory allocated to file and data storage versus program storage is displayed, as well as the amount of memory in use versus the available memory.

To see available storage card memory, tap **Start > Settings > System tab > Memory > Storage Card** tab.

If your device is running low on memory, try the following to free memory on your device:

- Close programs you are not currently using.
- Move e-mail attachments to a storage card.
- Move files to a storage card. Tap **Start > Programs > File Explorer**. Tap and hold the file, and tap **Cut**. Browse to the storage card folder and tap **Menu > Edit > Paste**.
- Delete unnecessary files. Tap **Start > Programs > File Explorer**. Tap and hold the file, and tap **Delete**.
- Delete large files. To find your largest files, tap **Start > Programs > Search**. In the **Type** list, tap **Larger than 64 KB**, and tap **Search**.
- In Internet Explorer Mobile, delete temporary Internet files and clear history information. For more information, see “Internet Explorer® Mobile” in Chapter 10.
- Remove programs you no longer use.
- Reset your device.

## 12.5 Windows Update

You can update Windows Mobile® on your device with the latest updates, security patches or fixes, if they are available.

### To set up Windows Update

The first time you run Windows Update, you need to set up how you want Windows Update to check for patches on the Microsoft Web site.

1. Tap **Start > Settings > Systems tab > Windows Update.**
2. On the Update Setup screen, tap **Next.**
3. Select how you want to check for updates, **Manual** or **Automatic**, then tap **Next.**

**Note** If you select **Automatic**, you will be asked if you want to use your current data plan to check for updates. Select or clear the **Use my data plan to check for and download updates** check box and tap **Next.**

4. Tap **Finish.**

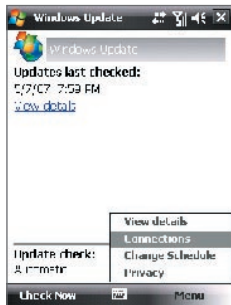
### To check for updates

1. Tap **Start > Settings > Systems tab > Windows Update.**
2. Tap **Check Now.**

**Note** Windows Mobile® updates may not be available at all times. You can check the Windows Mobile® Web site for update information.

### To change Windows Update options

1. Tap **Start > Settings > Systems tab > Windows Update.**
2. Tap **Menu** and select the option you want to change.
  - Tap **Connections** to change how the device connects to the Internet when checking for updates.
  - Tap **Change Schedule** to change how Windows Update checks for Windows Mobile® updates.



## 12.6 Battery Saving Tips

How long your battery power lasts depends on battery type and how you use your device. Try the following to help preserve battery life:

- When the device is not in use, press **POWER** to switch off the display.
- Tap **Start > Settings > System tab > Power** to open the **Power** settings screen. On the **Advanced** tab of the Power settings screen, you can specify when your device automatically turns off the display to conserve battery power. For optimum conservation, specify 3 minutes or less.
- Use the AC adapter to plug your device into external power whenever possible, especially when using a storage card or when using a modem or other peripherals.
- Adjust the backlight settings. For more information, see “To set the backlight to dim after a time delay” in Chapter 4.
- Turn Bluetooth off when you are not using it. Make your device visible to other devices only when you are trying to establish a Bluetooth partnership. For more information about Bluetooth, see Chapter 10.
- Lower the volume.
- Close battery-intensive programs, such as the Camera, when you are done using them. Make sure the programs are ended and are not continuously running in the background.

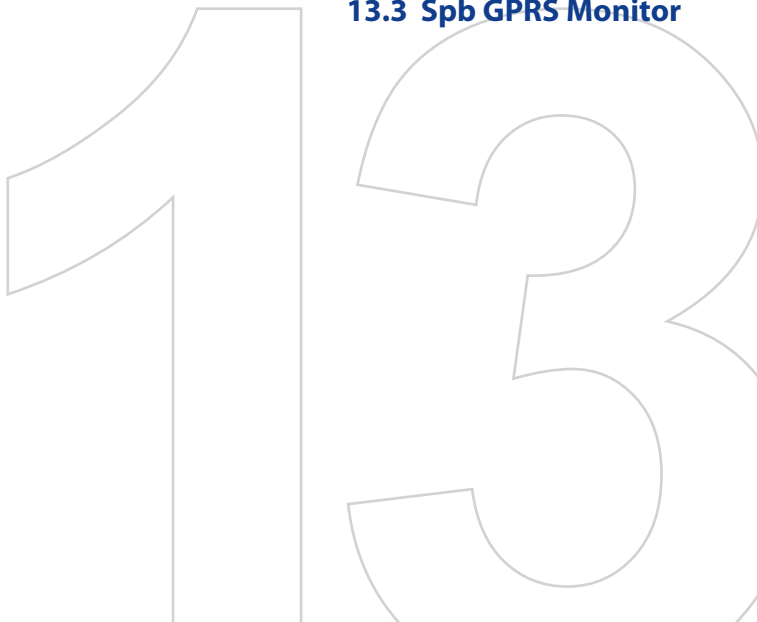
# Chapter 13

## Using Other Applications

**13.1 Voice Speed Dial**

**13.2 Java**



**13.3 Spb GPRS Monitor**

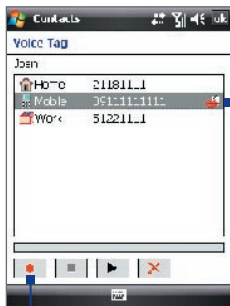


## 13.1 Voice Speed Dial

You can record voice tags so that you can dial a phone number or launch programs simply by speaking a word.


### Create a voice tag for a phone number



1. Tap **Start** > **Contacts** to open the Contacts list.
2. Do one of the following:
  - Tap and hold the desired contact, then tap **Add Voice Tag**.
  - Select the desired contact, then tap **Menu** > **Add Voice Tag**.
  - Tap the desired contact to open the contact's detailed screen, then tap **Menu** > **Add Voice Tag**.
3. Select the phone number that you want to create a voice tag, then tap the Record button (  ).
4. When completed, a **Voice Tag** icon (  ) will be displayed on the right of the item.



Select the desired phone number.

Tap the Record button to start recording.

5. When you create a voice tag for the item, you can do one of the following:
  - Tap the **Record** button (  ) to rebuild the voice tag.

- Tap the **Play** button (  ) to play the voice tag.
- Tap the **Delete** button (  ) to delete the voice tag.

**Tip** To ensure voice recognition accuracy, please record your voice in a quiet place.

## Create a voice tag for a program




1. Tap **Start > Settings > Personal tab > Voice Speed Dial**.
2. The **Application** tab displays a list of all installed programs on your device. The procedure for creating a voice tag for a program is the same as the procedure for creating a voice tag for a phone number.
3. After you have created a voice tag for a program, you can then launch the program by saying the recorded voice tag after tapping **Start > Programs > Voice Speed Dial**.

## Make a call or launch programs using a voice tag

1. Tap **Start > Programs > Voice Speed Dial**.
2. After a “beep” sound, say the recorded voice tag that you have assigned to the phone number you want to call or the program you want to launch. The system will repeat the voice tag and then dial out or launch the program automatically.

**Note** If the system cannot recognize your voice tag, please speak clearly and reduce the surrounding noise, then try again.

## To view and test the voice tags you have created

1. Tap **Start > Settings > Personal tab > Voice Speed Dial**.
2. The **Voice Tag** tab displays a list that contains all the voice tags you have created. Select an item in the list, and you can do one of the following:
  - Tap the **Record** button (  ) to rebuild the voice tag.
  - Tap the **Play** button (  ) to play the voice tag.
  - Tap the **Delete** button (  ) to delete the voice tag.

## 13.2 Java

MIDlets are Java applications such as games and tools that can run on mobile devices, while a MIDlet suite is a collection of one or more MIDlets. The **Java** program lets you download, install and manage MIDlets or MIDlet suites on your device. Your device supports Java 2 Micro Edition, J2ME.

### To open the Java program

- Tap **Start > Programs > Java**.

### Install and launch MIDlets/MIDlet suites

There are several ways to install a MIDlet/MIDlet suite.

#### To download and install via Internet Explorer Mobile

1. Tap **Menu > Install > Browser** to open Internet Explorer Mobile.
2. Locate the MIDlet/MIDlet suite while connected to the Internet.
3. Select the MIDlet/MIDlet suite to download.
4. Information about the MIDlet/MIDlet suite is then displayed. Tap **Continue**.
5. Confirm to start downloading.
6. Select **<root>** or a folder where to install the MIDlet suite to, then tap **OK**.

#### To install from your device

You can copy MIDlets/MIDlet suites from the PC to your device using the USB sync cable or Bluetooth connection. Copy them to the root folder or any subfolder on your device.

1. Tap **Menu > Install > Local Files**. The program then searches for MIDlets/MIDlet suites on your device and displays them in a list.
2. From the list, tap the MIDlet/MIDlet suite that you want to install.
3. Confirm to start the installation.
4. Select **<root>** or a folder where to install the MIDlet suite to, then tap **OK**.



### To run a MIDlet/MIDlet suite

Do one of the following:

- After installation of the MIDlet/MIDlet suite is complete, tap **Yes**.
- On the Java screen, open the folder that contains the MIDlet/MIDlet suite. Select the MIDlet/MIDlet suite then tap **Launch**.

### To stop running a MIDlet/MIDlet suite

- Tap **Exit** or **Quit** if presented on the MIDlet/MIDlet suite's screen or menu.

## Manage MIDlets/MIDlet suites

You can organize MIDlets/MIDlet suites into folders for easy identification, rename or update them, and more. If the device memory is full, uninstall some MIDlets/MIDlet suites to free up memory space.

### To create folders

1. Tap **Menu > New Folder**.
2. Enter a folder name then tap **Create**.

### To rename a MIDlet or folder

1. Tap and hold a MIDlet/MIDlet suite then tap **Rename**. Alternatively, you can tap **Menu > Actions > Rename**.
2. Enter a new name, then tap **Save**.

### To update a MIDlet/MIDlet suite

Tap and hold a MIDlet/MIDlet suite then tap **Update**. Alternatively, you can tap **Menu > Actions > Update**.

Java will search for updates for the selected MIDlet/MIDlet suite where it was installed from before.

### To uninstall MIDlets

Before you uninstall a MIDlet, make sure that it is not running.

1. Tap and hold the MIDlet, and tap **Uninstall**.
2. Tap **OK** to confirm.

**Note** To uninstall all MIDlets and folders from the current folder, tap **Menu > Uninstall All**.

## 13.3 Spb GPRS Monitor

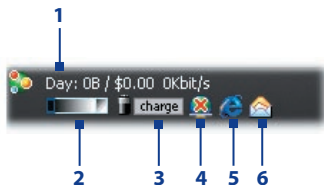
Using **Spb GPRS Monitor**, you can monitor how much data you have sent and received on your device, and check the network usage costs by taking into account your service plan details. You can also view connection cost and traffic charts, generate reports of network connection usage, and export reports to CSV files for use with Microsoft® Office Excel® and Access.

### Install GPRS Monitor

The GPRS Monitor program is included on the Application CD. To install it onto your device, run the program's installer on your PC. Follow the onscreen instructions on your PC and your device to complete the installation.

### The Today Plug-in

After you have installed GPRS Monitor on your device, you will find its program icon in **Start > Programs**. In addition, GPRS Monitor is also added to the Today screen as a plug-in which shows connection statistics, a brightness panel, battery panel, and shortcut icons.



- 1 Tap to open the GPRS Monitor screen where you can set up monitoring, view cost and traffic charts, and generate reports.
- 2 Tap inside the control bar to adjust the backlight level.
- 3 This is the battery power monitor. Tap it to access the Power Settings screen.
- 4 Tap to toggle between connecting or disconnecting your default data connection.
- 5 Tap to open Internet Explorer Mobile.
- 6 Tap to open Messaging.

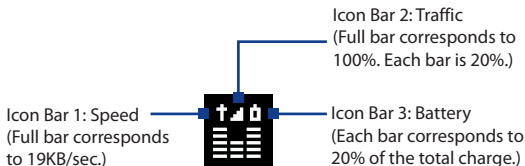
## The GPRS Monitor icon and pop-up window


Another way of displaying status information visually is by enabling the GPRS Monitor icon to be shown on the title bar. This icon shows the GPRS/dial-up connection speed, data traffic, and battery status.

### To show the GPRS Monitor icon on the title bar

1. Tap **Start > Programs > Spb GPRS Monitor**.
2. Tap **Tools > Options > Icon** tab.
3. Select the **Show taskbar icon** check box.

By default, the GPRS Monitor icon shows three bars that represent the following status information:



When you tap the GPRS Monitor icon  on the title bar, a pop-up window opens and shows you detailed statistics about data transfers, such as the data size just transferred and its cost, the data amount left that you are allowed to transfer, and more.

## Set up monitoring and notification

### To select the connection to be monitored

1. On the GPRS Monitor screen, tap **Tools > Options > Connection** tab.
2. Select the **Enable connection monitoring** check box.
3. In the **Connection** list, select the connection you want to monitor.

### To enter your service plan details

Service plan details, or tariff, determine the price that you pay for your data transfers. The tariff may either be flat rate or time-based, depending on whether you're using GPRS or a phone dial-up connection for data transfers. Contact your service provider to find out about your tariff, and enter the information in the **Tariff** tab or the **Tariff Details** tab on the Options screen.

**Note** The calculation of network usage costs is based on the information that you entered, and is an estimate only. The actual amount billed by your service provider may differ.

### To set up traffic limit notifications

You can set up traffic limit notifications if you want to be notified when a traffic limit is reached.

1. On the GPRS Monitor screen, tap **Tools > Options**.
2. Enable the notifications on the **Day Warn** and **Month Warn** tabs. You can specify up to three daily and three monthly limits.  
Once traffic reaches one of these limits, you will receive a notification.

## View charts and reports

On the GPRS Monitor, you can view network connection cost charts and traffic charts, as well as generate detailed reports of network connection usage during a given period of time. These reports can be exported to CSV files that you can open using Excel, Access, or other similar spreadsheet and database software.

### To view charts and generate reports

On the GPRS Monitor screen:

- Tap the **Chart** tab to view the network connection cost charts and traffic charts.
- Tap the **Report** tab to generate reports on network traffic and tariff.

For more information about using Spb GPRS Monitor, see Help on your device.

# Appendix

**A.1 Specifications**

**A.2 Regulatory Notices**

## A.1 Specifications

System Information	
<b>Processor</b>	Qualcomm® MSM7200™ 400 MHz
<b>Memory</b>	- ROM : 256 MB - RAM : 128 MB DDR (Figures are the total ROM and RAM memory available for use and storage. Since the memory is shared by the Operating System, applications, and data, the actual available memory is less than what is written).
<b>Operating System</b>	Windows Mobile® 6 Professional
Power	
<b>Battery</b>	Rechargeable Li-Polymer battery, 1000 mAh
<b>Charging Time</b>	3 hours
<b>Battery Life (estimates)</b>	Standby time: GSM: Up to 135+ hours UMTS: Up to 268 hours (Subject to network and phone usage)
	Talk time: GSM: Up to 4.75 hours UMTS: Up to 3.15 hours (Subject to network and phone usage)
	Video telephony Up to 1.78 hours
	Media playback time Up to 4.95 hours (WMV) Up to 6 hours (WMA)
<b>AC Adapter</b>	Voltage range/frequency: 100 - 240V AC, 50/60 Hz DC output: 5V and 1A
Display	
<b>LCD Type</b>	2.6" TFT-LCD with backlight LEDs, touch-sensitive screen
<b>Resolution</b>	240 x 320 with 65,536 colors
<b>Orientation</b>	Portrait and Landscape

**Phone**

<b>Network</b>	HSDPA/UMTS: Dual-band (800 and 2100 MHz) HSDPA: Up to 384kbps for upload and 3.6Mbps for download; UMTS: Up to 384kbps for upload and download GSM/GPRS/EDGE: Quad-band (850, 900, 1800, and 1900 Mhz) (The device will operate on frequencies available from the cellular network)
----------------	---

<b>Internal Antenna</b>	Yes
-------------------------	-----

**Physical**

<b>Dimensions</b>	107 mm (L) x 55 mm (W) x 16.5 mm (T)
-------------------	--------------------------------------

<b>Weight</b>	120 g (with battery)
---------------	----------------------

**Camera Module**

<b>Type</b>	Main Camera: 2 megapixel color CMOS camera with auto-focus Second Camera: CIF CMOS
-------------	---

<b>Resolution</b>	Photo: 1600 x 1200 (UXGA), 1280 x 960 (SXGA), 640 x 480 (VGA), 320 x 240 (QVGA), 160 x 120 (QQVGA) Video: 176x144 (QCIF), 128 x 96
-------------------	---

<b>Digital Zoom</b>	Up to 10X
---------------------	-----------

**Connections**

<b>I/O Port</b>	HTC ExtUSB™: 11-pin mini-USB and audio jack in one Hi-speed USB 2.0 HTC H2Wire support
-----------------	--

<b>Wireless Connections</b>	Bluetooth 2.1
-----------------------------	---------------

<b>Car Antenna Connector</b>	External connector for GSM/EDGE
------------------------------	---------------------------------

**FM Radio**

<b>Tuning Range</b>	76 Mhz ~ 90 Mhz
<b>FM sensitivity</b>	8uV @ (S+N)/N=26dB
<b>Auto Channel Search</b>	Yes

**Audio**

<b>Audio Controller</b>	AGC
<b>Ring tone Formats</b>	AAC, AAC+, eAAC+, MP3, WMA, WAV, QCELP, MPEG4, AMR-NB, AMR-WB 40 polyphonic and Standard MIDI format 0 and 1 (SMF) / SP MIDI
<b>Playback Formats</b>	Audio Manager supported formats: MP3, WMA, AAC, AAC+

**Controls and Lights**

<b>Device Control</b>	<ul style="list-style-type: none"> <li>• HTC TouchFLO™</li> <li>• 5-Way NAVIGATION CONTROL / ENTER button</li> <li>• Two phone functions : TALK and END</li> <li>• Volume Buttons</li> <li>• CAMERA button</li> <li>• POWER button</li> <li>• RESET button</li> </ul>
<b>Hardware Keyboard</b>	12-key keypad Start button Messaging button Internet Explorer button
<b>LEDs</b>	<p>The right LED shows Green and Amber lights for GSM/GPRS/EDGE standby, message, and network status as well as for notification and battery charging status.</p> <p>The left LED shows a flashing Blue light when the Bluetooth system is powered up and ready to transmit Bluetooth radio signal.</p>

**Expansion Slots**

<b>Card Slot</b>	microSD™ (SD 2.0 compatible)
------------------	------------------------------



## A.2 Regulatory Notices

### Regulatory Agency Identifications

For regulatory identification purposes, your product is assigned a model number of **NEON100 (HT1100)**.

To ensure continued reliable and safe operation of your device, use only the accessories listed below with your **NEON100 (HT1100)**.

The Battery Pack has been assigned a model number of **NEON160**.

This product is intended for use with a certified Class 2 Limited Power Source, rated 5 Volts DC, maximum 1 Amp power supply unit.

### European Union Notice

Products with CE marking comply with the R&TTE Directive (99/5/EC), the EMC Directive (89/336/EEC), and the Low Voltage Directive (73/23/EEC) issued by the Commission of the European Community.

Compliance with these directives implies conformity to the following European Norms (in parentheses are the equivalent international standards).

- **EN 60950-1 (IEC 60950-1)**  
Safety of Information Technology Equipment.
- **ETSI EN 300 328**  
Electromagnetic compatibility and Radio spectrum Matters (ERM); Wideband Transmission systems; data transmission equipment operating in the 2.4 GHz ISM band and using spread spectrum modulation techniques.
- **ETSI EN 301 511**  
Global system for mobile communications (GSM); Harmonized EN for mobile stations in the GSM 900 and GSM 1800 bands, covering essential requirements of article 3.2 of the R&TTE directive (1995/5/EC).
- **ETSI EN 301 489-1**  
Electromagnetic compatibility and Radio spectrum Matters (ERM); Electromagnetic Compatibility (EMC) standard for radio equipment and services; Part 1: Common technical requirements.
- **ETSI EN 301 489-7**  
Electromagnetic compatibility and Radio spectrum Matters (ERM); Electromagnetic Compatibility (EMC) standard for radio equipment and services; Part 7: Specific conditions for mobile and portable radio and ancillary equipment of digital cellular radio telecommunications systems (GSM and DCS).

- **ETSI EN 301 489-17**  
Electromagnetic compatibility and Radio spectrum Matters (ERM);  
Electromagnetic Compatibility (EMC) standard for radio equipment and services;  
Part 17: Specific conditions for 2.4 GHz wideband transmission systems.
- **ETSI EN 301 489-24**  
Electromagnetic compatibility and Radio spectrum Matters (ERM);  
Electromagnetic Compatibility (EMC) standard for radio equipment and services;  
Part 24: Specific conditions for IMT-2000 CDMA direct spread (UTRA) for mobile  
and portable (UE) radio and ancillary equipment.
- **ETSI EN 301 908-1 & -2**  
Electromagnetic compatibility and Radio spectrum Matters (ERM); Base Stations  
(BS), Repeaters and User Equipment (UE) for IMT-2000 Third Generation cellular  
networks; Part 1: Harmonized EN for IMT-2000, introduction and common  
requirements, covering essential requirements of article 3.2 of the R&TTE  
Directive.
- **EN 50360:2001**  
Product standard to demonstrate the compliance of mobile phones with the basic  
restrictions related to human exposure to electromagnetic fields  
(300 MHz ~ 3 GHz).
- **55013:2001**  
Sound and television broadcast receivers and associated equipment — Radio  
disturbance characteristics — Limits and methods of measurement
- **55020:2002**  
Sound and television broadcast receivers and associated equipment — Immunity  
characteristics — Limits and methods of measurement


 The image shows the CE mark, which consists of a stylized 'C' and 'E' inside a circle, followed by the number '0682'.

This equipment may be operated in:							
AT	BE	BG	CH	CY	CZ	DE	DK
EE	ES	FI	FR	GB	GR	HU	IE
IT	IS	LI	LT	LU	LV	MT	NL
NO	PL	PT	RO	SE	SI	SK	TR

## Federal Communications Commission Notice

This device complies with part 15 of the FCC Rules. Operation is subject to the following two conditions: (1) This device may not cause harmful interference, and (2) this device must accept any interference received, including interference that may cause undesired operation.

This equipment has been tested and found to comply with the limits for a Class B digital device, pursuant to Part 15 of the FCC Rules. These limits are designed to provide reasonable protection against harmful interference in a residential installation. This equipment generates, uses, and can radiate radio frequency energy and, if not installed and used in accordance with the instructions, may cause harmful interference to radio communications. However, there is no guarantee that interference will not occur in a particular installation. If this equipment does cause harmful interference to radio or TV reception, which can be determined by turning the equipment on and off, the user is encouraged to try to correct the interference by one or more of the following measures:

- Reorient or relocate the receiving antenna.
- Increase the separation between the equipment and receiver.
- Connect the equipment into an outlet on a circuit different from that to which the receiver is connected.
- Consult the dealer or an experienced radio or television technician for help.

## Modifications

The FCC requires the user to be notified that any changes or modifications made to the device that are not expressly approved by High Tech Computer Corp. may void the user's authority to operate the equipment.

## Safety Precautions for RF Exposure

- Use only original manufacturer-approved accessories, or accessories that do not contain any metal.
- Use of non-original manufacturer-approved accessories may violate your local RF exposure guidelines and should be avoided.

## Exposure to Radio Frequency (RF) Signals

Your device contains a radio transmitter and receiver. The radiated output power is far below the international radio frequency exposure limits. These limits are part of comprehensive guidelines and establish permitted levels of RF energy for the general population. The guidelines are based on the safety standards previously set by international standards bodies:

- American National Standards Institute (ANSI) IEEE. C95.1-1992
- National Council on Radiation Protection and Measurement (NCRP). Report 86. 1986

- International Commission on Non-Ionizing Radiation Protection (ICNIRP) 1996
- Ministry of Health (Canada), Safety Code 6. The standards include a substantial safety margin designed to assure the safety of all persons, regardless of age and health.

The exposure standard for wireless mobile phones employs a unit of measurement known as the Specific Absorption Rate, or SAR. The standard incorporates a substantial margin of safety to give additional protection for the public and to account for any variations in usage.

As with other mobile radio transmitting equipment, users are advised that for satisfactory operation of the equipment and for the safety of personnel, it is recommended that no part of the human body be allowed to come too close to the antenna during operation of the equipment.

Your device has an internal antenna. Use only the supplied integral antenna. Use of unauthorized or modified antennas may impair call quality and damage the phone, causing loss of performance and SAR levels exceeding the recommended limits as well as result in non-compliance with local regulatory requirement in you country.

To assure optimal phone performance and ensure human exposure to RF energy is within the guidelines set forth in the relevant standards; always use your device only in its normal-use position. Do not touch or hold the antenna area unnecessarily when placing or receiving a phone call. Contact with the antenna area may impair call quality and cause your device to operate at a higher power level than needed. Avoiding contact with the antenna area when the phone is IN USE optimizes the antenna performance and the battery life.

Tests for SAR are conducted using standard operating positions specified by the FCC with the phone transmitting at its highest certified power level in all tested frequency bands. Although the SAR is determined at the highest certified power level, the actual SAR level of the phone while operation can be well below the maximum value. This is because the phone is designed to operate at multiple power levels so as to use only the power required to reach the network. In general, the closer you are to a wireless base station antenna, the lower the power output. Before a phone model is available for sale to the public, it must be tested and certified to the FCC that it does not exceed the limit established by the government-adopted requirement for safe exposure. The tests are performed in positions and locations (for example, at the ear and worn on the body) as required by the FCC for each model. Body-worn measurements were tested for typical body-worn operations with the back of the device kept 1.5 cm from the body.

### **SAR Information**

- 1.11 W/kg @ 10g (CE)
- 1.39 W/kg @ 1g (FCC)

## **Telecommunications & Internet Association (TIA) safety information**

### **Pacemakers**

The Health Industry Manufacturers Association recommends that a minimum separation of six inches be maintained between a handheld wireless phone and a pacemaker to avoid potential interference with the pacemaker. These recommendations are consistent with the independent research by and recommendations of Wireless Technology Research. Persons with pacemakers:

- Should ALWAYS keep the phone more than six inches from their pacemaker when the phone is turned ON.
- Should not carry the phone in a breast pocket.
- Should use the ear opposite the pacemaker to minimize the potential for interference. If you have any reason to suspect that interference is taking place, turn the phone OFF immediately.

### **Hearing Aids**

Some digital wireless phones may interfere with some hearing aids. In the event of such interference, you may want to consult your service provider, or call the customer service line to discuss alternatives.

### **Other Medical Devices**

If you use any other personal medical device, consult the manufacturer of your device to determine if they are adequately shielded from external RF energy. Your physician may be able to assist you in obtaining this information.

Turn the phone OFF in health care facilities when any regulations posted in these areas instruct you to do so. Hospitals or health care facilities may be using equipment that could be sensitive to external RF energy.

### **WEEE Notice**

The Directive on Waste Electrical and Electronic Equipment (WEEE), which entered into force as European law on 13th February 2003, resulted in a major change in the treatment of electrical equipment at end-of-life.

The purpose of this Directive is, as a first priority, the prevention of WEEE, and in addition, to promote the reuse, recycling and other forms of recovery of such wastes so as to reduce disposal.



The WEEE logo (shown at the left) on the product or on its box indicates that this product must not be disposed of or dumped with your other household waste. You are liable to dispose of all your electronic or electrical waste equipment by relocating over to the specified collection point for recycling of such hazardous waste. Isolated collection and proper recovery of your electronic and electrical waste equipment at the time of disposal will allow us to help conserving natural resources. Moreover, proper recycling of the electronic and electrical waste equipment will ensure safety of human health and environment. For more information about electronic and electrical waste equipment disposal, recovery, and collection points, please contact your local city center, household waste disposal service, shop from where you purchased the equipment, or manufacturer of the equipment.

### **RoHS Compliance**

This product is in compliance with Directive 2002/95/EC of the European Parliament and of the Council of 27 January 2003, on the restriction of the use of certain hazardous substances in electrical and electronic equipment (RoHS) and its amendments.

# Index

## Symbols

3D sound 201

3G 152

## A

A2DP 165

ActiveSync

- Comm Manager 150

- overview 44

- set up 93

- synchronize 94, 133

Add and remove programs 206

Adobe Reader LE 44, 143

Alarm 84

Answer/end a call 69

Appointment search 62

Attachment

- add to e-mail 125

- download 127

Audio Booster 45, 201

Audio Manager 45, 197

## B

Backlight 82, 83

Back up data 146

Basic settings 82

Bass effects 201, 202

Battery

- battery information 20

- charge battery 24

- save battery power 212

Beam

- via Bluetooth 166

Block Recognizer 60

Bluetooth

- Bluetooth Explorer 45, 168

- Bluetooth file sharing 168

- Bluetooth shared folder 168

- hands-free headset 165

- modem 162

- modes 163

- overview 163

- partnership (pairing) 164

- SIM Access Profile (SAP) 78

- stereo headset 165

- synchronize 95

- turn on and off 150

- visible 163, 164

Burst capture mode 173

## C

Calculator 45

Calendar 44, 104

Calendar search 62

Calibration 25

Camera

- capture modes 172, 173

- controls 174

- file formats 173

- icons 174

- overview 45

- Quick Settings Panel 177

- settings 177

- specifications 223

Camera Album 45, 183

Car kit phones 78

Clear Storage 210

Clock & Alarms 48, 82

Comm Manager 45, 50, 150

Company Directory 139

Conference call 71

Configure data connection settings 23

Connection Setup 23, 42, 151

Connect device to Internet

- Dial-up 154

- GPRS 153

- start a connection 154



- ways of connection 152
- Contacts 44, 98
- Contacts Picture capture mode 173
- Contacts search 62
- Copy
  - contacts to SIM card 102
  - copy and manage files 144
  - media files from PC to device 191
  - SIM contacts to device 102
- Customize
  - Start menu 87
  - Today screen 85

## D

- Device ID 83
- Device name 83
- Dial-up 154
- Dimensions and weight 223
- Direct Push 133, 150
- Disconnect data connection 150
- Download e-mail 129
- Draw 109

## E

- E-mail
  - IMAP4 122
  - mail server settings 123
  - POP3 122
  - search 62
  - send 125
  - settings (POP3/IMAP4) 124
  - setup wizard 122
  - types of e-mail accounts 121
- EDGE 152
- Edit picture 188
- Emergency call 278
- Emoticon 119
- Equalizer 201, 202

- Excel Mobile 44, 142
- Exchange Server 132

## F

- Favorite contacts 35
- File Explorer 45, 144
- Find contact
  - Company Directory 139
  - on device 100
- Finger panning 38
- Finger scrolling 38
- Flash Lite Player 45, 196
- Forward e-mail 128

## G

- Games 44
- GIF animation 188
- GPRS/3G 152
- GPRS Monitor 45, 218

## H

- Hard reset 209
- Help 44
- Help search 62
- Home 30
- HSDPA 50
- HTC Home 29

## I

- IMAP4 122
- Input methods
  - Block Recognizer 60
  - Keyboard 56
  - Letter Recognizer 60
  - Symbol Pad 59
  - Transcriber 61
- Input Panel 52
- International call 78

- Internet 152
- Internet Explorer Mobile 44, 155
- Internet Sharing 45, 161

**J****Java**

- create folders 217
- install MIDlets/MIDlet suites from device 216
- install MIDlets/MIDlet suites from Internet 216
- manage MIDlets/MIDlet suites 217
- overview 45
- rename MIDlet or folder 217
- uninstall MIDlets 217
- update a MIDlet/MIDlet suite 217

**K****Keyboard**

- onscreen 56

**L**

- Landscape 25
- Launcher 32, 37
- Letter Recognizer 60
- Library screen (Windows Media Player Mobile) 190
- Live Messenger 159

**M**

Mail search 62

**Make call**

- from Call History 68
- from Contacts 66
- from Phone program 66
- from SIM Manager 69
- from Speed Dial 68
- from TouchFLO 67

Memory 210, 222

**Messaging**

- about 44, 114
- e-mail 121, 122, 125
- multimedia (MMS) 117
- text (SMS) 115

Messenger 45, 159

microSD card 22

Microsoft Office Mobile 44, 142

MIDlet/MIDlet suite 216

MMS 117

- add audio clip 119
- add photo/video 118
- add text 119
- blacklist 120
- create MMS message 118
- MMS settings 117
- reply message 120
- view message 120

MMS Video capture mode 173

**Modem**

- Bluetooth 162
- USB 162

Multimedia 37, 117, 189

Multipress mode 55

**Music playback**

- Audio Manager 197
- TouchFLO 37
- Windows Media Player Mobile 192

Music Player (Audio Manager) 198

Mute 71

**N**

Notes 45, 109

Notes search 62

Now Playing screen (Windows Media Player Mobile) 190

Numeric mode 56

**O**

- Office Mobile 44, 142
- Open PDF file 143
- Owner information 86

**P**

- Panning
  - finger panning 38
- Panorama capture mode 173
- Password 88
- Phone 44, 64, 66
- Phone services 85
- Photo capture mode 173
- Pictures & Videos
  - edit picture 188
  - file formats 187
  - overview 45
  - play GIF animation 188
  - play videos 188
  - view pictures 187
- Picture Theme capture mode 173
- PIN 64, 87
- Playback screen (Windows Media Player Mobile) 190
- Playlists
  - Audio Manager 199
  - Windows Media Player Mobile 193
- Play GIF animation 188
- Play media 192
- Play music
  - Audio Manager 197
  - Touch Cube (TouchFLO) 37
  - Windows Media Player Mobile 192
- Play videos 188
- Plug-in
  - GPRS Monitor 218
  - HTC Home 29
- POP3 122

- Portrait 25
- PowerPoint Mobile 44, 142
- Programs 44
  - Audio Booster 45, 201
- Put call on hold 70

**Q**

- QuickTasks 28
- Quick menu 28
- QWERTY keyboard 52, 54

**R**

- Receive call 69
- Record
  - voice note 110
  - voice recording 111
- Regional settings 82
- Regulatory notices 225
- Reply
  - e-mail 128
  - MMS 120
- Reset
  - clear storage 210
  - hard reset 208
  - soft reset 208
- Review screen (Camera) 178
- Ringer 150
- Ring tone 83, 200
- Ring type 83

**S**

- SAPSettings 46, 78
- Screen text size 83
- Scrolling
  - finger scrolling 38
- Search 46, 62
- Send
  - e-mail 125

- MMS message 118
- text message (SMS) 115
- Settings 47, 82
  - camera 177
- Settings (Connections tab)
  - Beam 50
  - Bluetooth 50, 163
  - Comm Manager 50, 150
  - Connections 50, 152, 154
  - Connection Setup 50
  - CSD Line Type 50
  - GPRS Setting 50
  - HSDPA 50
  - Network Cards 50
  - Network Wizard 151
  - SMS Service 50
  - USB to PC 50, 95
- Settings (Personal tab)
  - Buttons 47
  - Input 47
  - Large Start Menu 47
  - Lock 47, 88
  - Menus 47, 87
  - Owner Information 47, 86
  - Phone 47, 83, 85
  - Sounds & Notifications 47, 84
  - Today 47, 85
  - Voice Speed Dial 47
- Settings (System tab)
  - About 48, 83
  - Backlight 48, 82, 83
  - Certificates 48
  - Clear Storage 48, 210
  - Clock & Alarms 48, 82, 84
  - Customer Feedback 48
  - Device Information 48
  - Device Lock 48
  - Encryption 48, 88
  - Error Reporting 48
  - External GPS 48
  - Keypad QuickTasks 49
  - Key Lock 48
  - Long Press End Key 49
  - Memory 49, 210
  - Microphone AGC 49
  - Power 25, 49, 212
  - Regional Settings 49, 82
  - Remove Programs 49, 206
  - Screen 25, 49, 83
  - Task Manager 49, 206
  - TouchFLO 41, 49
- Set music as ring tone 200
- Shortcuts 32, 37
- SIM Access Profile (SAP) 78
- SIM card 20
- SIM Manager 102
  - copy contacts to SIM card 102
  - copy SIM contacts to device 102
  - create SIM contact 102
  - make call 69
  - overview 46
- Smart Dial 76
- SMS 115, 125
- Soft reset 208
- Sounds & Notifications 84
- Spb GPRS Monitor 45
- Speakerphone 71
- Specifications 222
- Speed Dial 68
- Sports capture mode 173
- Sprite Backup 46, 146
- Start menu 27, 87
- Status icons 42
- STK (SIM Tool Kit) Service 46
- Storage card 20
  - check available space 210
  - copy files 145
  - encrypt 88

Streaming Media 46, 194  
 Swap/switch calls 71  
 Synchronize
 

- ActiveSync 94
- change information types 94
- via Bluetooth 95
- Windows Media Player 96, 191
- with computer 94
- with Exchange Server 132

 System information 222

## T

Tasks 46, 107  
 Tasks search 62  
 Task Manager 206  
 Text messages
 

- copy from and to SIM card 116
- send 115

 Text size (screen) 83  
 Today screen 26, 85  
 TouchFLO 34, 49, 67  
 Touch Cube (TouchFLO) 34  
 Touch Keyboard 57  
 Touch Keypad 58  
 Transcriber 61  
 Treble effects 201  
 Troubleshoot
 

- sync connection 95
- Windows Media Player Mobile 193

 Turn device on and off 23  
 Turn phone function on and off 64, 150

## U

USB modem 162  
 USB to PC 95

## V

Vibrate 65, 150  
 Vibration 83  
 Video call 72  
 Video capture mode 173  
 View
 

- MMS 120
- pictures 187

 View Web page 155  
 Voicemail 68  
 Voice call 66  
 Voice Recorder 46, 110, 111  
 Voice Speed Dial
 

- create
  - voice tag for phone number 214
  - voice tag for program 215
- make call or launch program 215
- overview 46, 214

 Voice tag
 

- create
  - for phone number 214
  - for program 215
- make call or launch program 215

 Volume 65

## W

Weather 30  
 Windows Live 46, 157  
 Windows Live Messenger 45, 159  
 Windows Media Player Mobile
 

- file formats 189
- menus 190
- overview 46
- playlists 193
- troubleshoot 193

 Windows Mobile Device Center 91  
 Windows Update 49, 211  
 Word Mobile 44, 142

## **X**

xT9 mode 55

## **Z**

ZIP

- create archive 146
- open zip file and extract files 145
- overview 46, 145

Zoom (Camera) 176