

# EXHIBIT C - EUT INTERNAL PHOTOGRAPHS

---

Chassis – Cover off View



Chassis – Battery off View



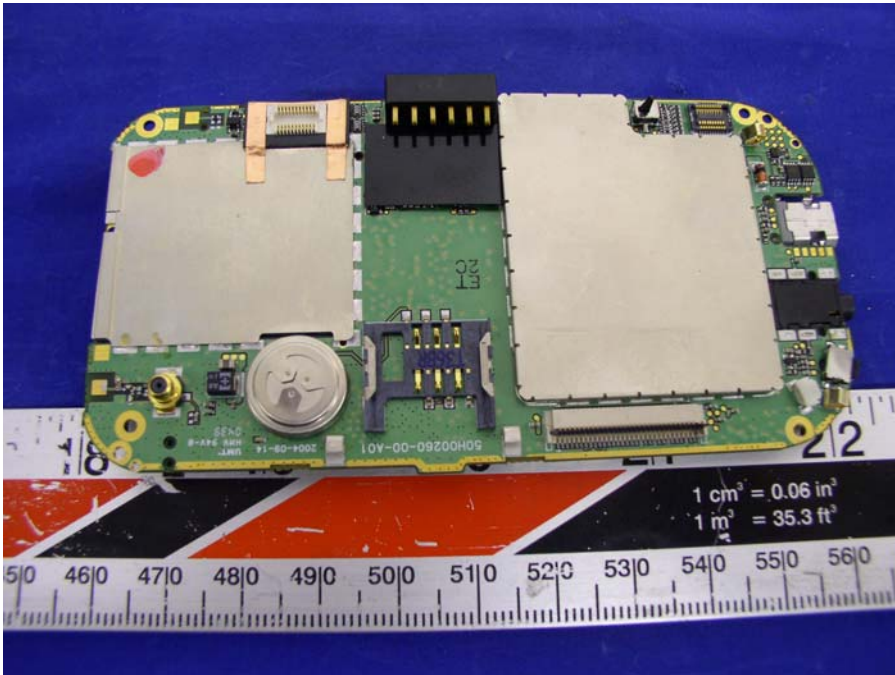
## Chassis – Battery View



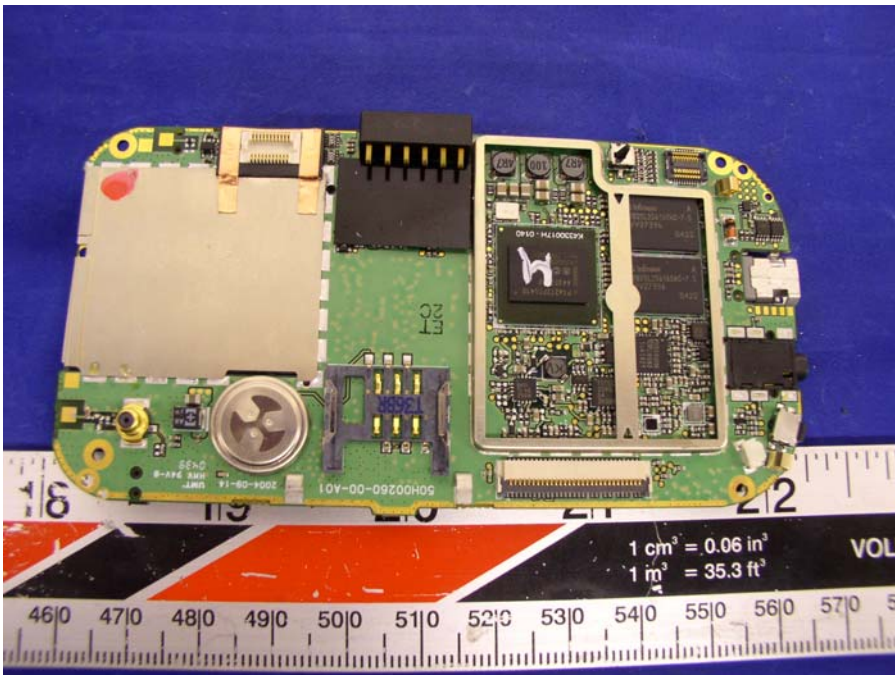
## Chassis – Open View



Main Board – Component with Shielding View

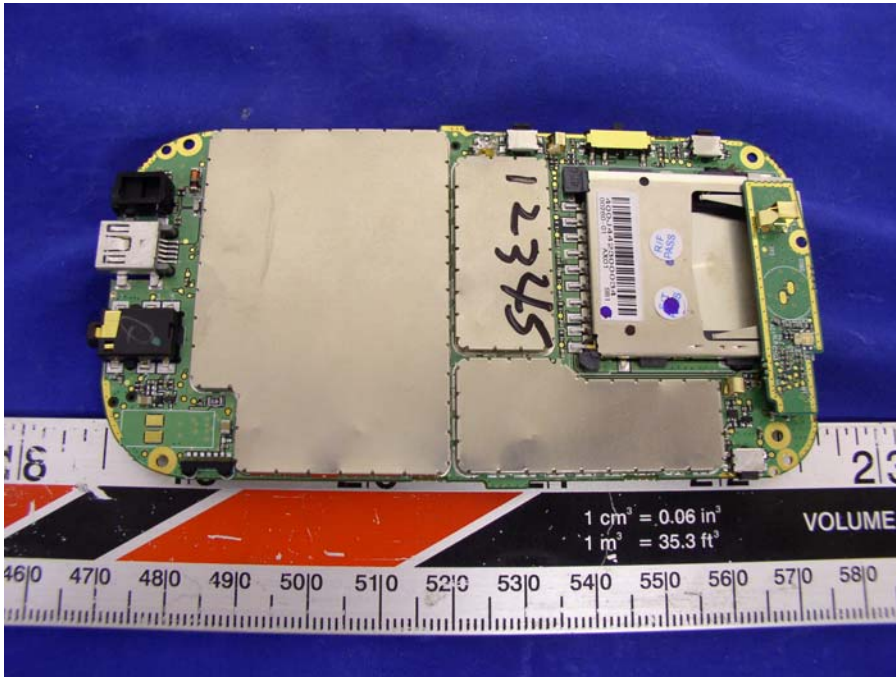


Main Board – Component without Shielding View

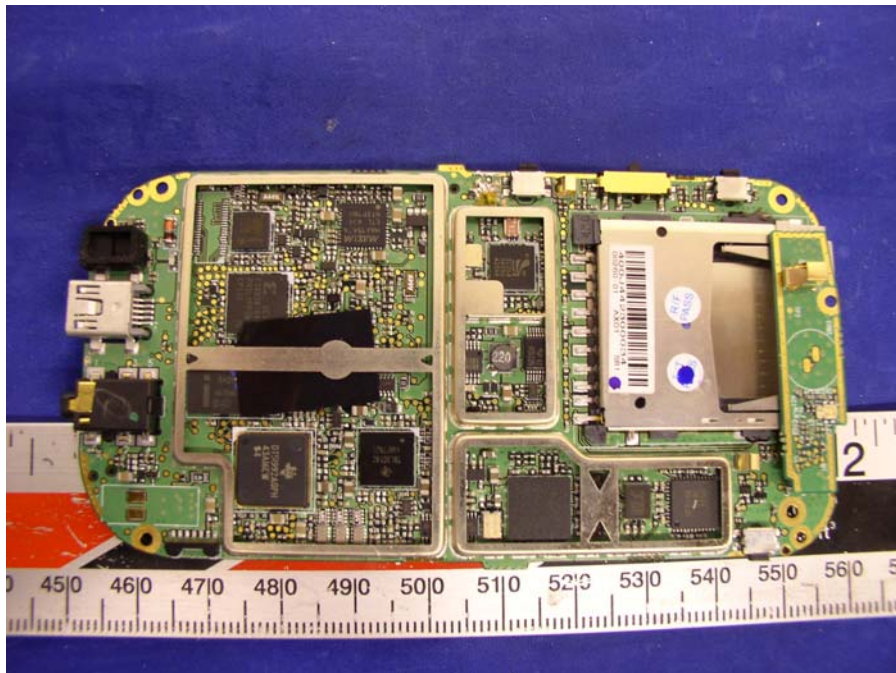




**Main Board – Solder with Shielding View**



**Main Board – Solder without Shielding View**



LCD Display View 1



LCD Display View 2



**Antenna View**

