

1900MHz Head Validation(1800MHz Dipole Antenna)

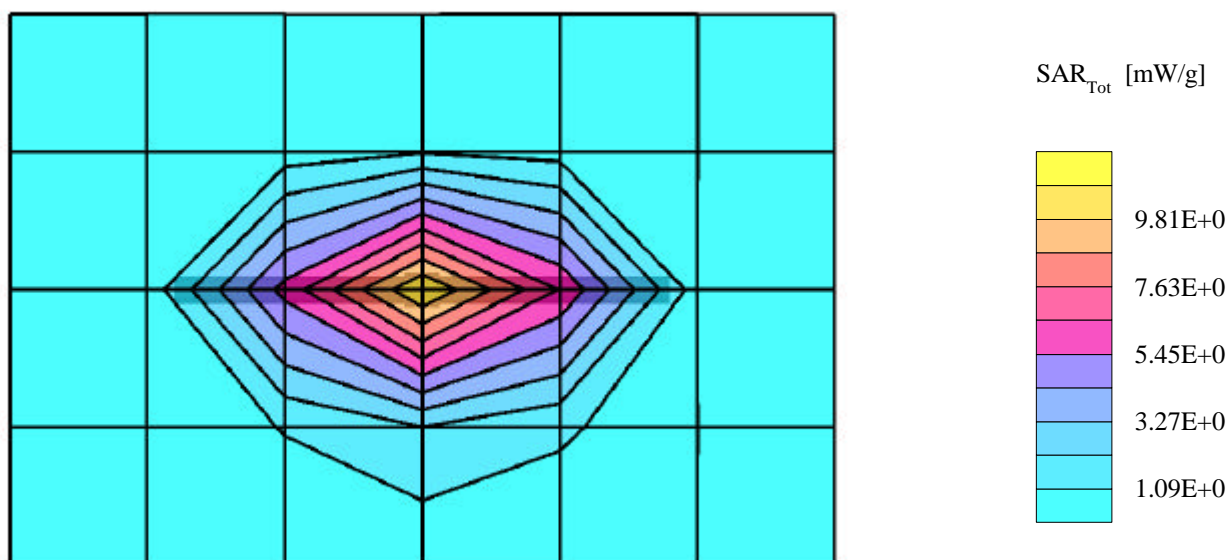
SAM(1900M) Phantom; Flat Section; Probe: ET3DV6 - SN1702; ConvF(5.50,5.50,5.50);

Med. parameter 1900 MHz Brain: $\sigma = 1.39$ mho/m $\epsilon_r = 40.2$ $\rho = 1.00$ g/cm³; Antenna Position -- In; Crest factor: 1.0;
SAR (1g): 9.98 mW/g, SAR (10g): 5.03 mW/g

Dipole validation:

for $f < 1$ GHz, distance to the liquid $d = 15$ mm

for $f > 1$ GHz, distance to the liquid $d = 10$ mm



1900MHz Head Validation(1900MHz Dipole Antenna)

SAM(1900M) Phantom; Flat Section; Probe: ET3DV6 - SN1702; ConvF(5.50,5.50,5.50);

Med. parameter 1900 MHz Brain: $\sigma = 1.39$ mho/m $\epsilon_r = 40.2$ $\rho = 1.00$ g/cm³; Antenna Position -- In; Crest factor: 1.0;

SAR (1g): 10.3 mW/g, SAR (10g): 5.25 mW/g

Dipole validation:

for $f < 1$ GHz, distance to the liquid $d = 15$ mm

for $f > 1$ GHz, distance to the liquid $d=10$ mm

