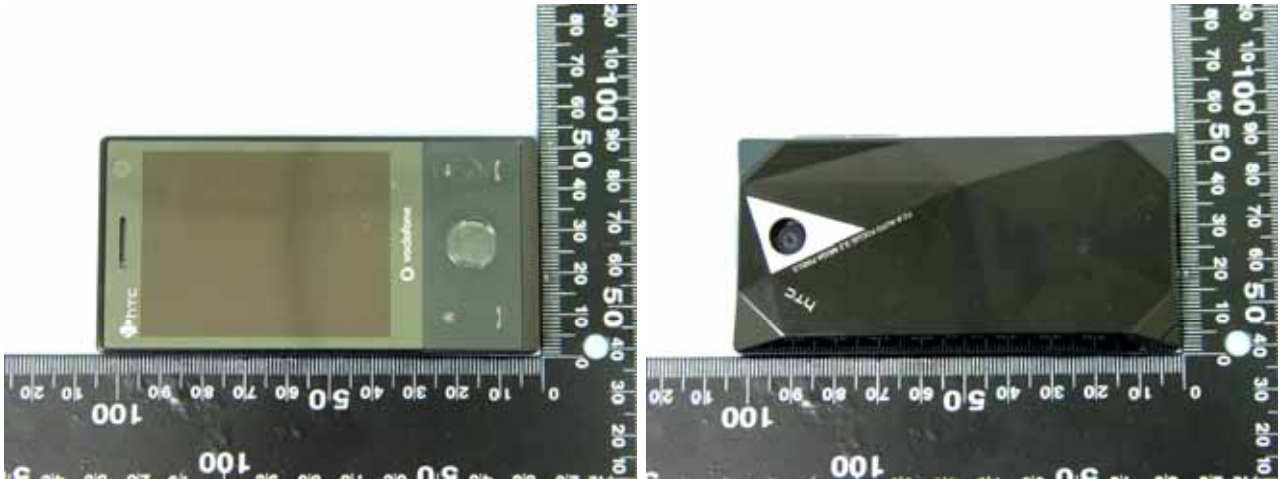
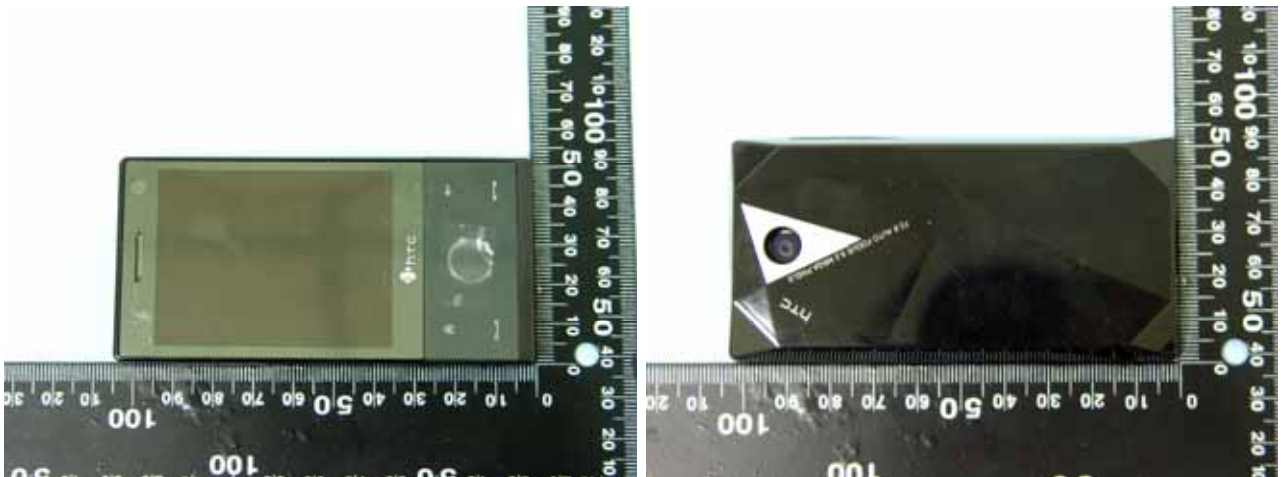


### Appendix D - Product Photos

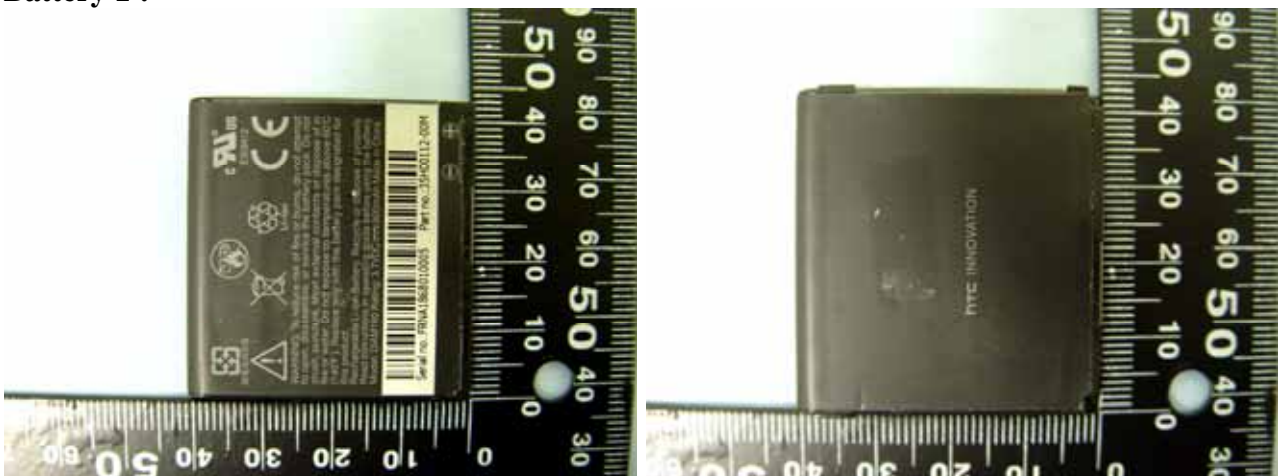
PDA Phone 1 :



PDA Phone 2 :



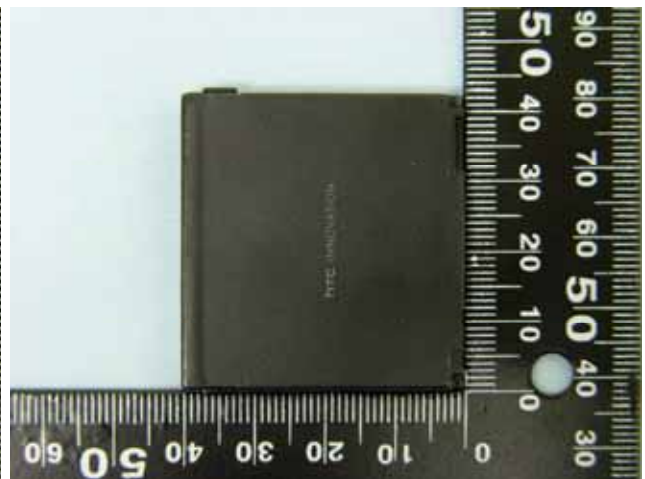
Battery 1 :



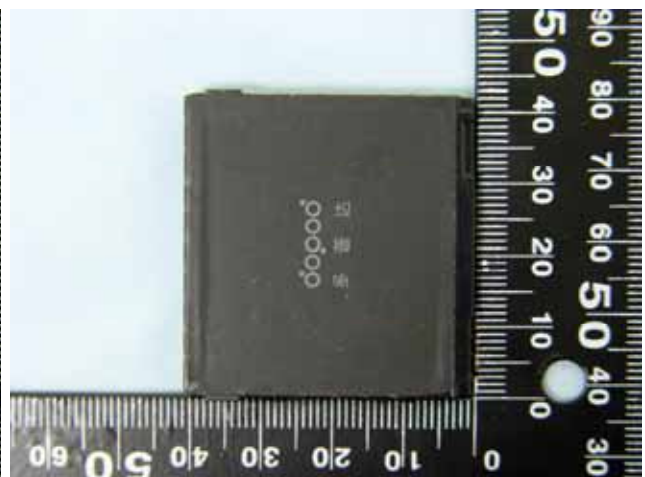
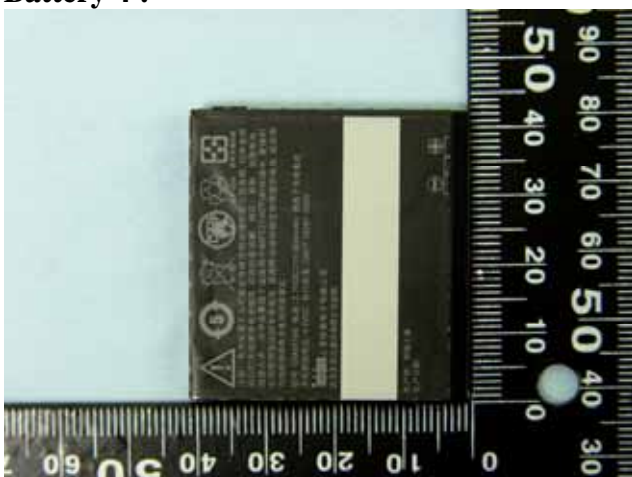
**Battery 2 :**



**Battery 3 :**



**Battery 4 :**





**Earphone 2 :**



**Earphone 3 :**



**Earphone 4 :**



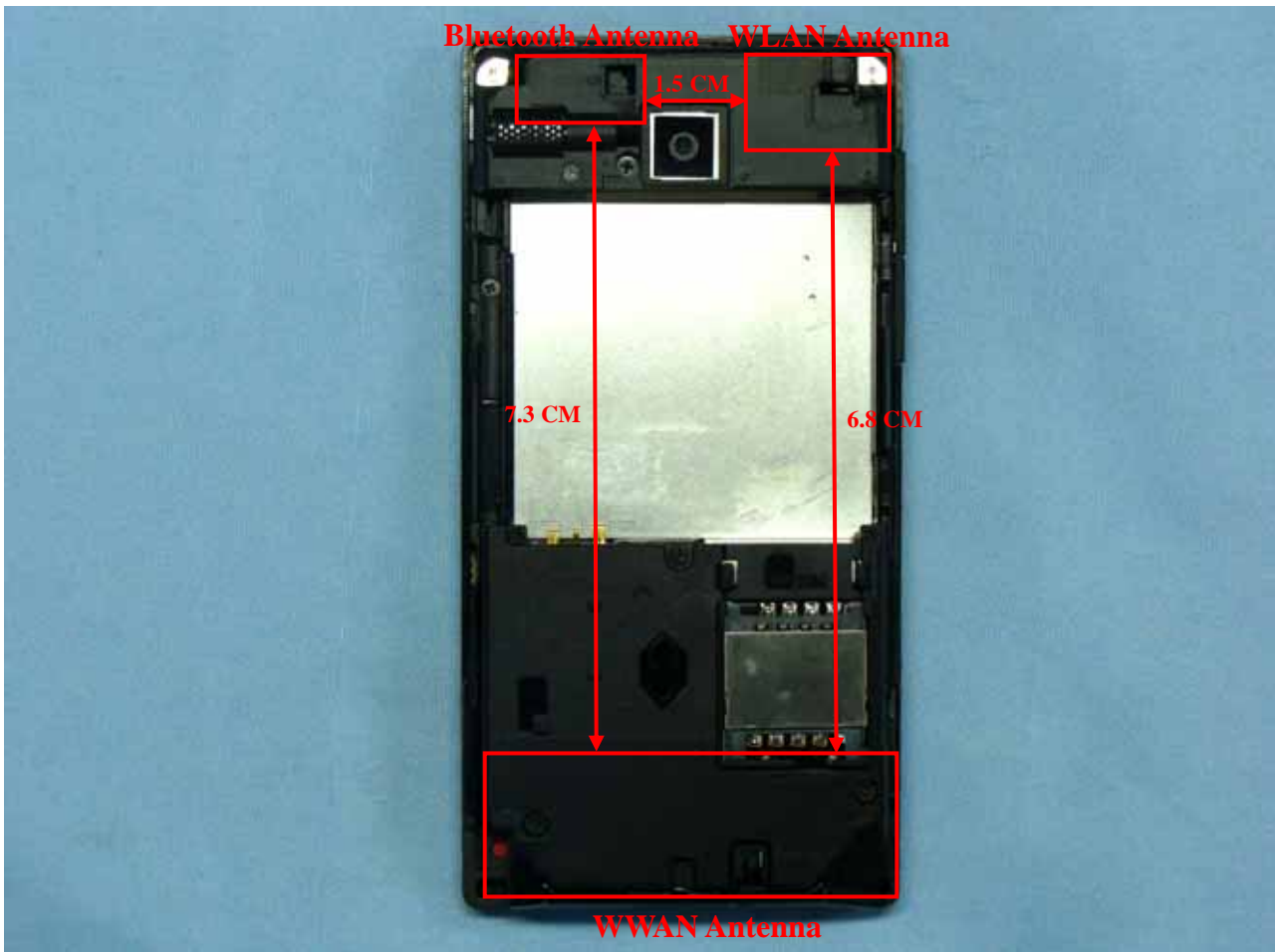
**Earphone 5 :**



**Earphone 6 :**



Antenna Distance :





2<sup>nd</sup> component Source List

Component Model		
AC Adapter 1	Brand Name	DELTA
	Model Name	ADP-5FH X (X=A, B, C, D, or E)
	Power Rating	I/P: 100-240Vac, 50-60Hz, 0.2A; O/P: 5Vdc, 1A
	AC Power Cord Type	1.8 meter shielded cable without ferrite core
AC Adapter 2	Brand Name	PHIHONG
	Model Name	PSAA05X-050 (X=A, C, E, K, or S)
	Power Rating	I/P: 100-240Vac, 50-60Hz, 200mA; O/P: 5Vdc, 1A
	AC Power Cord Type	1.8 meter shielded cable without ferrite core
AC Adapter 3	Manufacturer	DELTA
	Brand Name	hTC
	Model Name	TC P300
	Power Rating	I/P: 100-240Vac, 50-60Hz, 0.2A; O/P: 5Vdc, 1A
AC Adapter 4	Manufacturer	Foxlink
	Brand Name	hTC
	Model Name	TC P300
	Power Rating	I/P: 100-240Vac, 50-60Hz, 0.2A; O/P: 5Vdc, 1A
Car Charger	Brand Name	Phihong
	Model Name	CLA05D-050A
	P/N	CC L120
	Power Rating	I/P: 10-30V, 0.65A; O/P: 5Vdc, 1A
	Power Cord Type	1.8 meter shielded cable without ferrite core
Battery 1	Manufacturer	Total Wireless Solutions (Macao Commercial Offshore) Limited (TWS)
	Brand Name	hTC
	Model Name	DIAM160
	Power Rating	3.7Vdc, 900mA
	Type	Li-ion
Battery 2	Manufacturer	DESAY CORPORATION (Desay)
	Brand Name	hTC
	Model Name	DIAM160
	Power Rating	3.7Vdc, 900mA
	Type	Li-ion
Battery 3	Manufacturer	SAMSUNG SDI CO., LTD.
	Brand Name	hTC
	Model Name	DIAM160
	Power Rating	3.7Vdc, 900mA
	Type	Li-ion
Battery 4	Manufacturer	SIMPLO TECHNOLOGY CO., LTD.
	Brand Name	hTC
	Model Name	DIAM171
	Power Rating	3.7Vdc, 1340mA
	Type	Li-ion



Battery 5	<b>Manufacturer</b>	Total Wireless Solutions (Macao Commercial Offshore) Limited (TWS)
	<b>Brand Name</b>	hTC
	<b>Model Name</b>	DIAM171
	<b>Power Rating</b>	3.7Vdc, 1340mA
Battery 6	<b>Type</b>	Li-ion
	<b>Manufacturer</b>	WellDone Company
	<b>Brand Name</b>	hTC
	<b>Model Name</b>	DIAM160
Earphone 1	<b>Power Rating</b>	3.7Vdc, 900mA
	<b>Type</b>	Li-ion
	<b>Signal Line Type</b>	1.7 meter shielded cable without ferrite core
Earphone 2	<b>Brand Name</b>	COTRON
	<b>Model Name</b>	RC E100
	<b>Signal Line Type</b>	1.7 meter shielded cable without ferrite core
Earphone 3	<b>Brand Name</b>	COTRON
	<b>Model Name</b>	HS S200
	<b>Signal Line Type</b>	1.6 meter shielded cable without ferrite core
Earphone 4	<b>Brand Name</b>	COTRON
	<b>Model Name</b>	HS S300
	<b>Signal Line Type</b>	1.6 meter shielded cable without ferrite core
Earphone 5	<b>Manufacturer</b>	MEC
	<b>Model Name</b>	HS S300
	<b>Signal Line Type</b>	1.7 meter non-shielded cable without ferrite core
Earphone 6	<b>Manufacturer</b>	Kingstate
	<b>Model Name</b>	HS S300
	<b>Signal Line Type</b>	1.7 meter non-shielded cable without ferrite core
USB Cable 1	<b>Manufacturer</b>	Merry
	<b>Model Name</b>	HS S300
	<b>Signal Line Type</b>	1.7 meter non-shielded cable without ferrite core
USB Cable 2	<b>Brand Name</b>	MEC
	<b>Model Name</b>	DC U300
	<b>Signal Line Type</b>	1.4 meter shielded cable with ferrite core
USB Cable 3	<b>Brand Name</b>	MEC
	<b>Model Name</b>	DC U100
	<b>Signal Line Type</b>	1.2 meter shielded cable with ferrite core
LCD Panel 1	<b>Manufacturer</b>	ACON
	<b>Model Name</b>	DC U300
	<b>Signal Line Type</b>	1.25 meter shielded cable without ferrite core
LCD Panel 2	<b>Brand Name</b>	Hitachi
	<b>Model Name</b>	DX07D05VM0AAA
LCD Panel 2	<b>Brand Name</b>	Sharp
	<b>Model Name</b>	LS028V7DX01





<b>Photo Camera 1</b>	<b>Brand Name</b>	Foxconn
	<b>Model Name</b>	CMHT-3A403D
<b>Photo Camera 2</b>	<b>Brand Name</b>	LiteOn
	<b>Model Name</b>	07PM12
<b>Video Camera 1</b>	<b>Brand Name</b>	Foxconn
	<b>Model Name</b>	CMHT-00M00D
<b>Video Camera 2</b>	<b>Brand Name</b>	LiteOn
	<b>Model Name</b>	07PC05
<b>Pouch</b>	<b>Brand Name</b>	XIGMA
	<b>Model Name</b>	PO S400

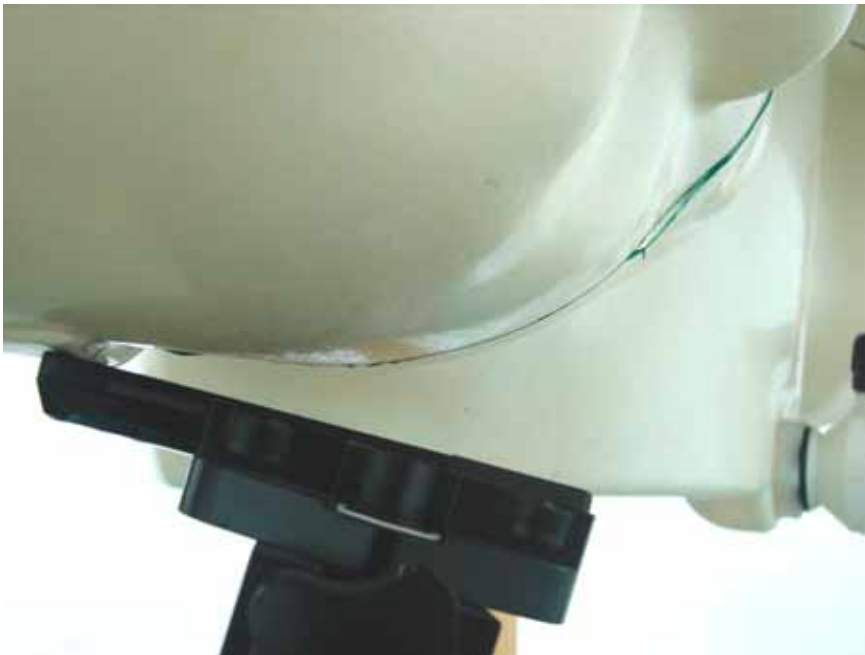
**Remark:**

1. ADP-5FH X (X=A, B, C, D or E) have the same circuit design. The difference between these models is plug, only ADP-5FH B was used for the test.
2. PSAA05X-050 (X=A, C, E, K or S) have the same circuit design. The difference between these models is plug, only PSAA05A-05 was used for the test.
3. TC P300 has some different plug such as US, EU, UK, AS and CN, only US used for testing.
4. The pouch is dust cover and its function is to protect the mobile phone. The pouch is without any clasps, so it can not be carried.
5. Above EUT's information was declared by manufacturer. Please refer to the specifications of manufacturer or User's Manual for more detailed features description.

### *Appendix E - Test Setup Photos*



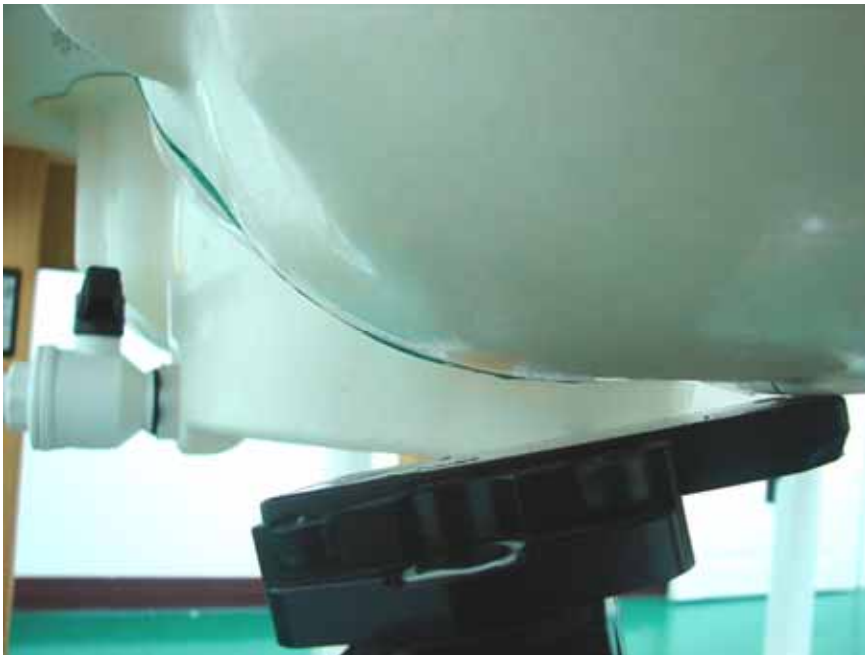
**Right Cheek**



**Right Tilted**



**Left Cheek**



**Left Tilted**



**Face with 1.5cm Gap**



**Bottom with 1.5cm Gap**