

SAR EVALUATION REPORT

For

High Tech Computer, Corp.

23, Hsin Hua Rd.
Taoyuan, Taiwan, R.O.C

FCC ID: NM8DEXTROUS

2003-09-02

This Report Concerns: <input checked="" type="checkbox"/> Original Report	Equipment Type: Pocket PC with WLAN Card and Bluetooth
Test Engineer: Eric Hong	
Report No.: R0308114S	
Test Date: 2003-08-22	
Reviewed By: Ling Zhang	
Prepared By: Bay Area Compliance Laboratory Corporation 230 Commercial Street Sunnyvale, CA 94085 Tel: (408) 732-9162 Fax: (408) 732 9164	

Note: This test report is specially limited to the above client company and the product model only. It may not be duplicated without prior written consent of Bay Area Compliance Laboratory Corporation. This report **must not** be used by the client to claim product endorsement by NVLAP or any agency of the U.S. Government.

TABLE OF CONTENTS

SUMMARY..... 3

1 - REFERENCE..... 4

2 - TESTING EQUIPMENT..... 5

 2.1 EQUIPMENTS LIST & CALIBRATION INFO.....5

 2.2 EQUIPMENT CALIBRATION CERTIFICATE.....5

3 - EUT DESCRIPTION..... 12

4 - SYSTEM TEST CONFIGURATION..... 13

 4.1 JUSTIFICATION13

 4.2 EUT EXERCISE SOFTWARE AND PROCEDURE.....13

 4.3 SPECIAL ACCESSORIES.....13

 4.4 EQUIPMENT MODIFICATIONS.....13

5 - CONDUCTED OUTPUT POWER MEASUREMENT..... 14

 5.1 MEASUREMENT PROCEDURE14

 5.2 TEST RESULTS.....14

 5.3 MEASUREMENT PLOTS.....14

6 - DOSIMETRIC ASSESSMENT SETUP..... 16

 6.1 MEASUREMENT SYSTEM DIAGRAM.....17

 6.2 SYSTEM COMPONENTS.....18

 6.3 MEASUREMENT UNCERTAINTY22

7 - SYSTEM EVALUATION..... 23

 7.1 SIMULATED TISSUE LIQUID PARAMETER CONFIRMATION.....23

 7.2 EVALUATION PROCEDURES.....23

 7.3 SYSTEM ACCURACY VERIFICATION24

 7.4 SAR EVALUATION PROCEDURE.....27

 7.5 EXPOSURE LIMITS.....28

8 - TEST RESULTS 29

 8.1 SAR BODY-WORN TEST DATA.....29

 8.2 PLOTS OF TEST RESULT29

EXHIBIT A - SAR SETUP PHOTOGRAPHS 33

 BACK SIDE TOUCHING FLAT PHANTOM33

 FACE TOUCHING FLAT PHANTOM33

 PERPENDICULAR TO FLAT PHANTOM34

EXHIBIT B - EUT PHOTOGRAPHS 35

 EUT – TOP VIEW35

 EUT – BOTTOM VIEW.....35

 EUT – PORT VIEW36

 AC ADAPTER VIEW36

 ADAPTER VIEW37

 BATTERY VIEW37

 BATTERY CHARGER.....38

 EUT – BOARD AND HOUSING.....38

 EUT – TRANSCEIVER BOARD TOP39

 EUT – TRANSCEIVER BOARD BOTTOM.....39

EXHIBIT C – Z-AXIS 40

SUMMARY

The US Federal Communications Commission has released the report and order "Guidelines for Evaluating the Environmental Effects of RF Radiation", ET Docket No. 93-62 in August 1996 [1].

The order requires routine SAR evaluation prior to equipment authorization of portable transmitter devices, including portable telephones. For consumer products, the applicable limit is 1.6 mW/g as recommended by the ANSI/IEEE standard C95.1-1992 [6] for an uncontrolled environment (Paragraph 65). According to the Supplement C of OET Bulletin 65 "Evaluating Compliance with FCC Guide-lines for Human Exposure to Radio frequency Electromagnetic Fields", released on Jun 29, 2001 by the FCC, the device should be evaluated at maximum output power (radiated from the antenna) under "worst-case" conditions for normal or intended use, incorporating normal antenna operating positions, device peak performance frequencies and positions for maximum RF energy coupling.

This report describes the methodology and results of experiments performed on wireless data terminal. The objective was to determine if there is RF radiation and if radiation is found, what is the extent of radiation with respect to safety limits. SAR (Specific Absorption Rate) is the measure of RF exposure determined by the amount of RF energy absorbed by human body (or its parts) – to determine how the RF energy couples to the body or head which is a primary health concern for body worn devices. The limit below which the exposure to RF is considered safe by regulatory bodies in North America is 1.6 mW/g average over 1 gram of tissue mass.

The test configurations were laid out on a specially designed test fixture to ensure the reproducibility of measurements. Each configuration was scanned for SAR. Analysis of each scan was carried out to characterize the above effects in the device.

The investigation was limited to the worst-case scenario from the device usage point of view. For the clarity of data analysis, and clarity of presentation, only one tissue simulation was used for the head and body simulation. This means that if SAR was found at the headset position, the magnitude of SAR would be overestimated comparing to SAR to a headset placed in the ear region.

There was no SAR of any concern measured on the device for any of the investigated configurations, please see following table for testing result summary:

Ambient Temperature (°C): 23.0
Relative Humidity (%): 49.3

Worst case SAR reading

EUT Position	Ch (MHz)	Conducted Power (dBm)	Worst case SAR, averaged over 1g [mW/g]			
			Setup condition (applicable checked)		Measured	Limit
			Antenna	Phantom		
Back side touching	2437	15.63	Built-in	Flat	0.102	1.6
Face touching	2437	15.63			0.692	1.6
Perpendicular	2437	15.63			0.681	1.6

1 - REFERENCE

- [1] Federal Communications Commission, \Report and order: Guidelines for evaluating the environmental effects of radiofrequency radiation", Tech. Rep. FCC 96-326, FCC, Washington, D.C. 20554, 1996.
- [2] David L. Means Kwok Chan, Robert F. Cleveland, \Evaluating compliance with FCC guidelines for human exposure to radiofrequency electromagnetic fields", Tech. Rep., Federal Communication Commission, Office of Engineering & Technology, Washington, DC, 1997.
- [3] Thomas Schmid, Oliver Egger, and Niels Kuster, \Automated E-field scanning system for dosimetric assessments", IEEE Transactions on Microwave Theory and Techniques, vol. 44, pp. 105-113, Jan. 1996.
- [4] Niels Kuster, Ralph Kastle, and Thomas Schmid, \Dosimetric evaluation of mobile communications equipment with known precision", IEEE Transactions on Communications, vol. E80-B, no. 5, pp. 645-652, May 1997.
- [5] CENELEC, \Considerations for evaluating of human exposure to electromagnetic fields (EMFs) from mobile telecommunication equipment (MTE) in the frequency range 30MHz - 6GHz", Tech. Rep., CENELEC, European Committee for Electrotechnical Standardization, Brussels, 1997.
- [6] ANSI, ANSI/IEEE C95.1-1992: IEEE Standard for Safety Levels with Respect to Human Exposure to Radio Frequency Electromagnetic Fields, 3 kHz to 300 GHz, The Institute of Electrical and Electronics Engineers, Inc., New York, NY 10017, 1992.
- [7] Katja Pokovic, Thomas Schmid, and Niels Kuster, \Robust setup for precise calibration of E-field probes in tissue simulating liquids at mobile communications frequencies", in ICECOM '97, Dubrovnik, October 15-17, 1997, pp. 120-24.
- [8] Katja Pokovic, Thomas Schmid, and Niels Kuster, \E-field probe with improved isotropy in brain simulating liquids", in Proceedings of the ELMAR, Zadar, Croatia, 23-25 June, 1996, pp. 172-175.
- [9] Volker Hombach, Klaus Meier, Michael Burkhardt, Eberhard Kuhn, and Niels Kuster, \The dependence of EM energy absorption upon human head modeling at 900 MHz", IEEE Transactions on Microwave Theory and Techniques, vol. 44, no. 10, pp. 1865-1873, Oct. 1996.
- [10] Klaus Meier, Ralf Kastle, Volker Hombach, Roger Tay, and Niels Kuster, \The dependence of EM energy absorption upon human head modeling at 1800 MHz", IEEE Transactions on Microwave Theory and Techniques, Oct. 1997, in press.
- [11] W. Gander, Computermathematik, Birkhaeuser, Basel, 1992.
- [12] W. H. Press, S. A. Teukolsky, W. T. Vetterling, and B. P. Flannery, Numerical Recipes in C, The Art of Scientific Computing, Second Edition, Cambridge University Press, 1992. Dosimetric Evaluation of Sample device, month 1998 9
- [13] NIS81 NAMAS, \The treatment of uncertainty in EMC measurement", Tech. Rep., NAMAS Executive, National Physical Laboratory, Teddington, Middlesex, England, 1994.
- [14] Barry N. Taylor and Christ E. Kuyatt, \Guidelines for evaluating and expressing the uncertainty of NIST measurement results", Tech. Rep., National Institute of Standards and Technology, 1994. Dosimetric Evaluation of Sample device, month 1998 10

2 - TESTING EQUIPMENT

2.1 Equipments List & Calibration Info

Type / Model	Cal. Date	S/N:
DASY3 Professional Dosimetric System	N/A	N/A
Robot RX60L	N/A	F00/5H31A1/A/01
Robot Controller	N/A	F01/5J72A1/A/01
Dell Computer Optiplex GX110	N/A	N/A
Pentium III, Windows NT	N/A	N/A
SPEAG EDC3	N/A	N/A
SPEAG DAE3	6/02	456
SPEAG E-Field Probe ET3DV6	9/7/02	1604
SPEAG Dummy Probe	N/A	N/A
SPEAG Generic Twin Phantom	N/A	N/A
SPEAG Light Alignment Sensor	N/A	278
Apprel Validation Dipole D-1800-S-2	11/6/01	BCL-049
SPEAG Validation Dipole D900V2	9/3/02	122
Brain Equivalent Matter (800MHz)	Daily	N/A
Brain Equivalent Matter (1900MHz)	Daily	N/A
Brain Equivalent Matter (2450MHz)	Daily	N/A
Muscle Equivalent Matter (800MHz)	Daily	N/A
Muscle Equivalent Matter (1900MHz)	Daily	N/A
Muscle Equivalent Matter (2450MHz)	Daily	N/A
Robot Table	N/A	N/A
Phone Holder	N/A	N/A
Phantom Cover	N/A	N/A
HP Spectrum Analyzer HP8593GM	6/20/02	3009A00791
Microwave Amp. 8349B	N/A	2644A02662
Power Meter HP436A	4/2/02	2709A29209
Power Sensor HP8482A	4/2/02	2349A08568
Signal Generator RS SMIQ O3	2/10/02	1084800403
Network Analyzer HP-8753ES	7/30/02	820079
Dielectric Probe Kit HP85070A	N/A	N/A
Apprel Validation Dipole D-2450-S-1	10/1/02	BCL-141

2.2 Equipment Calibration Certificate


Please see the attached file.

Engineering**Zeughausstrasse 43, 8004 Zurich, Switzerland, Phone +41 1 245 97 00, Fax +41 1 245 97 79****Additional Conversion Factors
for Dosimetric E-Field Probe**

Type	ET3DV6
Serial Number:	1604
Place of Assessment	Zurich
Date of Assessment:	October 4, 2002
Probe Calibration Date:	August 26, 2002

Schmid & Partner Engineering AG hereby certifies that conversion factor(s) of this probe have been evaluated on the date indicated above. The assessment was performed using the FDTD numerical code SEMCAD of Schmid & Partner Engineering AG. Since the evaluation is coupled with measured conversion factors, it has to be recalculated yearly, i.e., following the re-calibration schedule of the probe. The uncertainty of the numerical assessment is based on the extrapolation from measured value at 900 MHz or at 1800 MHz.

Assessed by:



Conversion Factor (\pm standard deviation)**150 MHz ConvF $9.2 \pm 8\%$**

$\epsilon_r = 52.3$
 $\sigma = 0.76 \text{ mho/m}$
 (head tissue)

300 MHz ConvF $8.0 \pm 8\%$

$\epsilon_r = 45.3$
 $\sigma = 0.87 \text{ mho/m}$
 (head tissue)

450 MHz ConvF $7.3 \pm 8\%$

$\epsilon_r = 43.5$
 $\sigma = 0.87 \text{ mho/m}$
 (head tissue)

2450 MHz ConvF $4.7 \pm 8\%$

$\epsilon_r = 39.2$
 $\sigma = 1.80 \text{ mho/m}$
 (head tissue)

150 MHz ConvF $8.8 \pm 8\%$

$\epsilon_r = 61.9$
 $\sigma = 0.80 \text{ mho/m}$
 (body tissue)

450 MHz ConvF $7.7 \pm 8\%$

$\epsilon_r = 56.7$
 $\sigma = 0.94 \text{ mho/m}$
 (body tissue)

2450 MHz ConvF $4.3 \pm 8\%$

$\epsilon_r = 52.7$
 $\sigma = 1.95 \text{ mho/m}$
 (body tissue)

Schmid & Partner Engineering AG

Zeughausstrasse 43, 8004 Zurich, Switzerland, Phone +41 1 245 97 00, Fax +41 1 245 97 79

Calibration Certificate

Dosimetric E-Field Probe

Type:

ET3DV6

Serial Number:

1604

Place of Calibration:

Zurich

Date of Calibration:

August 26, 2002

Calibration Interval:

12 months

Schmid & Partner Engineering AG hereby certifies, that this device has been calibrated on the date indicated above. The calibration was performed in accordance with specifications and procedures of Schmid & Partner Engineering AG.

Wherever applicable, the standards used in the calibration process are traceable to international standards. In all other cases the standards of the Laboratory for EMF and Microwave Electronics at the Swiss Federal Institute of Technology (ETH) in Zurich, Switzerland have been applied.

Calibrated by:

D. Vetter

Approved by:

Dennis Klatka

DASY3 - Parameters of Probe: ET3DV6 SN:1604

Sensitivity in Free Space

NormX	1.73 $\mu\text{V}/(\text{V}/\text{m})^2$
NormY	1.68 $\mu\text{V}/(\text{V}/\text{m})^2$
NormZ	1.72 $\mu\text{V}/(\text{V}/\text{m})^2$

Diode Compression

DCP X	93	mV
DCP Y	93	mV
DCP Z	93	mV

Sensitivity in Tissue Simulating Liquid

Head	900 MHz	$\epsilon_r = 41.5 \pm 5\%$	$\sigma = 0.97 \pm 5\%$ mho/m
Head	835 MHz	$\epsilon_r = 41.5 \pm 5\%$	$\sigma = 0.90 \pm 5\%$ mho/m
ConvF X	6.5 $\pm 9.5\%$ (k=2)		Boundary effect:
ConvF Y	6.5 $\pm 9.5\%$ (k=2)		Alpha 0.36
ConvF Z	6.5 $\pm 9.5\%$ (k=2)		Depth 2.82
Head	1800 MHz	$\epsilon_r = 40.0 \pm 5\%$	$\sigma = 1.40 \pm 5\%$ mho/m
Head	1900 MHz	$\epsilon_r = 40.0 \pm 5\%$	$\sigma = 1.40 \pm 5\%$ mho/m
ConvF X	5.5 $\pm 9.5\%$ (k=2)		Boundary effect:
ConvF Y	5.5 $\pm 9.5\%$ (k=2)		Alpha 0.50
ConvF Z	5.5 $\pm 9.5\%$ (k=2)		Depth 2.46

Boundary Effect

Head	900 MHz	Typical SAR gradient: 5 % per mm	
	Probe Tip to Boundary	1 mm	2 mm
	SAR _{be} [%] Without Correction Algorithm	11.1	6.6
	SAR _{be} [%] With Correction Algorithm	0.4	0.6
Head	1800 MHz	Typical SAR gradient: 10 % per mm	
	Probe Tip to Boundary	1 mm	2 mm
	SAR _{be} [%] Without Correction Algorithm	12.3	8.1
	SAR _{be} [%] With Correction Algorithm	0.1	0.1

Sensor Offset

Probe Tip to Sensor Center	2.7	mm
Optical Surface Detection	1.3 \pm 0.2	mm

Body 2450 Mhz Liquid Measurement, 2003/08/22

frequency	e'	e''	
2425000000.0000	51.2021	13.2603	
2426000000.0000	51.2493	13.2777	
2427000000.0000	51.2581	13.3100	
2428000000.0000	51.2710	13.3076	
2429000000.0000	51.2985	13.3389	
2430000000.0000	51.3543	13.3578	
2431000000.0000	51.3717	13.3711	
2432000000.0000	51.4172	13.3875	
2433000000.0000	51.4214	13.4154	
2434000000.0000	51.4101	13.4112	
2435000000.0000	51.4282	13.4541	
2436000000.0000	51.3871	13.4710	
2437000000.0000	51.3958	13.4731	
2438000000.0000	51.3387	13.4852	
2439000000.0000	51.3496	13.4928	
2440000000.0000	51.3561	13.4896	
2441000000.0000	51.3630	13.4911	
2442000000.0000	51.3771	13.4344	
2443000000.0000	51.3641	13.4453	
2444000000.0000	51.3227	13.4687	
2445000000.0000	51.2985	13.5405	
2446000000.0000	51.3227	13.5381	
2447000000.0000	51.2856	13.5726	
2448000000.0000	51.2203	13.5672	
2449000000.0000	51.1190	13.6025	
2450000000.0000	51.1018	13.6266	
2451000000.0000	51.0566	13.6487	
2452000000.0000	51.0381	13.7275	
2453000000.0000	51.0555	13.7360	
2454000000.0000	51.0403	13.7413	
2455000000.0000	51.0448	13.7895	
2456000000.0000	51.0342	13.7740	
2457000000.0000	50.9971	13.8288	
2458000000.0000	50.9971	13.8818	
2459000000.0000	51.0134	13.8623	
2460000000.0000	51.0255	13.8272	
2461000000.0000	50.9936	13.8295	
2462000000.0000	51.0052	13.8260	
2463000000.0000	51.0129	13.8984	
2464000000.0000	51.0104	13.9779	
2465000000.0000	51.0117	13.9973	
2466000000.0000	51.0422	13.9976	
2467000000.0000	51.0262	14.0002	
2468000000.0000	51.0284	14.0130	
2469000000.0000	51.0254	14.9962	
2470000000.0000	51.0478	14.0774	
2471000000.0000	51.1414	14.1215	
2472000000.0000	51.0843	14.1131	
2473000000.0000	51.0912	14.0636	
2474000000.0000	51.0664	14.0759	
2475000000.0000	51.0692	14.0980	

$s = w e_o e'' = 2 p f e_o e'' = 1.86$ (Target Value = 1.95)

where $f = 2450$

$$e_o = 8.854 \times 10^{-12}$$

$$e'' = 13.6266$$

Head 2450 Mhz Liquid Measurement, 2003/08/22

frequency	e'	e''	
2425000000.0000	40.4644	13.5380	
2426000000.0000	40.4511	13.5259	
2427000000.0000	40.4182	13.5362	
2428000000.0000	40.4096	13.5631	
2429000000.0000	40.4280	13.5637	
2430000000.0000	40.4239	13.5712	
2431000000.0000	40.4192	13.6188	
2432000000.0000	40.4597	13.6658	
2433000000.0000	40.4619	13.6509	
2434000000.0000	40.4507	13.6491	
2435000000.0000	40.4629	13.6722	
2436000000.0000	40.4555	13.6910	
2437000000.0000	40.4411	13.7004	
2438000000.0000	40.4808	13.6435	
2439000000.0000	40.4511	13.6560	
2440000000.0000	40.4432	13.6921	
2441000000.0000	40.4119	13.6901	
2442000000.0000	40.4129	13.7032	
2443000000.0000	40.4407	13.7166	
2444000000.0000	40.4103	13.7332	
2445000000.0000	40.4193	13.7181	
2446000000.0000	40.4025	13.7280	
2447000000.0000	40.4122	13.6889	
2448000000.0000	40.3880	13.6670	
2449000000.0000	40.3585	13.6726	
2450000000.0000	40.3377	13.6686	
2451000000.0000	40.3139	13.6625	
2452000000.0000	40.3677	13.6801	
2453000000.0000	40.3486	13.7265	
2454000000.0000	40.3615	13.7387	
2455000000.0000	40.3745	13.7309	
2456000000.0000	40.3557	13.7505	
2457000000.0000	40.3615	13.7534	
2458000000.0000	40.3589	13.7193	
2459000000.0000	40.3704	13.7371	
2460000000.0000	40.3737	13.7471	
2461000000.0000	40.3774	13.7797	
2462000000.0000	40.3940	13.7698	
2463000000.0000	40.3606	13.7617	
2464000000.0000	40.3445	13.7674	
2465000000.0000	40.3652	13.7846	
2466000000.0000	40.3459	13.7951	
2467000000.0000	40.3494	13.7717	
2468000000.0000	40.3918	13.7701	
2469000000.0000	40.3820	13.7468	
2470000000.0000	40.3466	13.7285	
2471000000.0000	40.3592	13.7512	
2472000000.0000	40.3656	13.7566	
2473000000.0000	40.3486	13.7373	
2474000000.0000	40.3429	13.6946	
2475000000.0000	40.3484	13.7213	

$s = w e_o e'' = 2 p f e_o e'' = 1.86$ (Target Value = 1.80)

where $f = 2450$

$$e_o = 8.854 \times 10^{-12}$$

$$e'' = 13.6686$$

3 - EUT DESCRIPTION

Applicant:	High Tech Computer, Corp.
Product Description:	Pocket PC with 802.11b and bluetooth transmitter
FCC ID:	NM8DEXTROUS
Serial Number:	None
Transmitter Frequency:	2412-2462 MHz
Maximum Output Power:	0.0366W
RF Exposure environment:	General Population/Uncontrolled
Applicable Standard	FCC CFR 47, Part 15 Subpart C
Application Type:	Certification

¹ Specific Absorption Rate (SAR) is a measure of the rate of energy absorption due to exposure to an RF transmitting source (wireless portable device).

² IEEE/ANSI Std. C95.1-1992 limits are used to determine compliance with FCC ET Docket 93-62.

Note: The test data was good for test sample only. It may have deviation for other test samples.

4 - SYSTEM TEST CONFIGURATION

4.1 Justification

The system was configured for testing in a typical fashion (as normally used by a typical user).

4.2 EUT Exercise Software and Procedure

The EUT exercising program used during SAR testing was designed to exercise the various system components in a manner similar to a typical use. The software, PRISM utilities, contained on the hard drive, is auto starting on power-up. Once loaded, the program sequentially exercises each system component.

The testing procedure is as follows:

1. Click PRISM test utilities on Window
2. Select wireless LAN Adapter under adapters list
3. Select low, mid and high channels under Radio Channels
4. Select Tx Rate of 11MB
5. Click on "continuous Tx" bottom

4.3 Special Accessories

All interface cables used for compliance testing are shielded as normally supplied by INMAC, Monster Cable and their respective support equipment manufacturer. The EUT is featured shielded metal connectors.

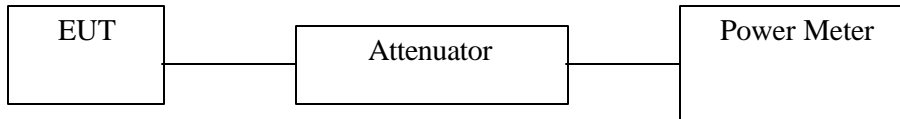
4.4 Equipment Modifications

No modification(s) were made to ensure that the EUT complies with the applicable limits.

5 - CONDUCTED OUTPUT POWER MEASUREMENT

5.1 Measurement Procedure

1. Place the EUT on a bench and set it in transmitting mode.
2. Remove the antenna from the EUT and then connect a low loss RF cable from the antenna port to a spectrum analyzer.
3. Add a correction factor to the display.



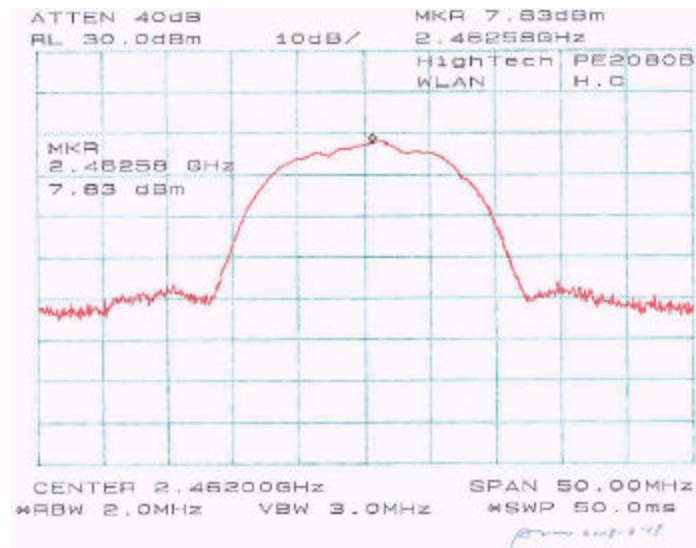
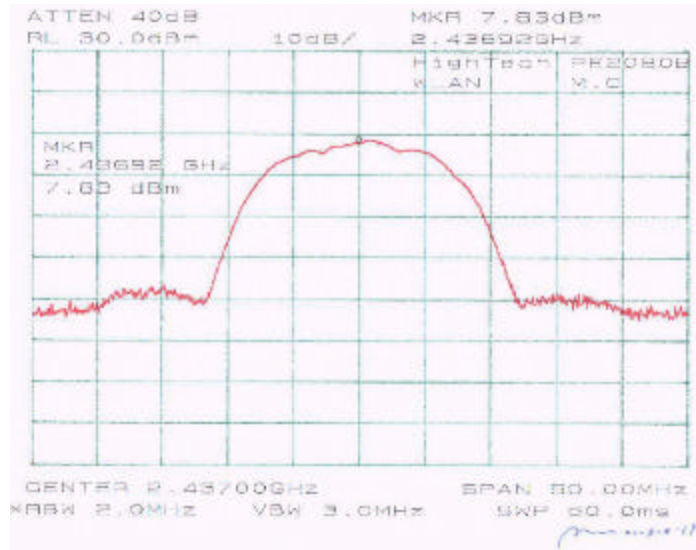
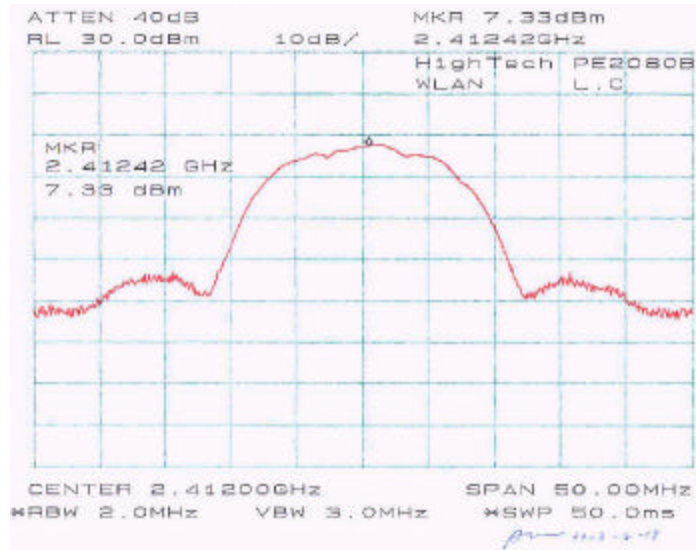
5.2 Test Results

Frequency (MHz)	Peak Output Power (dBm)	Correction Factor (dBm)	Corrected Power (dBm)	Output Power (W)	Standard (W)	Result
2412	7.33	7.8	15.13	0.0326	≤ 1 W	Compliant
2437	7.83	7.8	15.63	0.0366	≤ 1 W	Compliant
2462	7.83	7.8	15.63	0.0366	≤ 1 W	Compliant

Note: Correction Factor = $10 \log (BW6dB/RBW) = 7.8 \text{ dBm}$

5.3 Measurement Plots

Please refer to the plots hereinafter.



6 - DOSIMETRIC ASSESSMENT SETUP

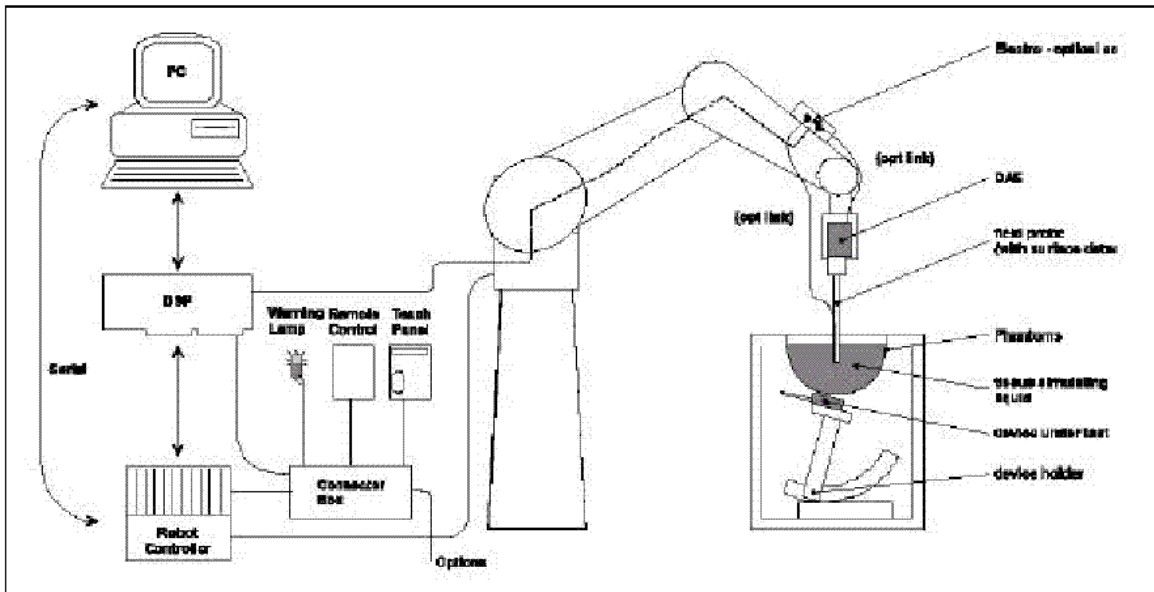
These measurements were performed with the automated near-field scanning system DASY3 from Schmid & Partner Engineering AG (SPEAG). The system is based on a high precision robot (working range greater than 0.9m) which positions the probes with a positional repeatability of better than ± 0.02 mm. Special E- and H-field probes have been developed for measurements close to material discontinuity, the sensors of which are directly loaded with a Schottky diode and connected via highly resistive lines to the data acquisition unit. The system is described in detail in [3].

The SAR measurements were conducted with the dosimetric probe ET3DV6 SN: 1604 (manufactured by SPEAG), designed in the classical triangular configuration [3] and optimized for dosimetric evaluation. The probe has been calibrated according to the procedure described in [7] with accuracy of better than $\pm 10\%$. The spherical isotropy was evaluated with the procedure described in [8] and found to be better than ± 0.25 dB.

The phantom used was the "Generic Twin Phantom" described in [4]. The ear was simulated as a spacer of 4 mm thickness between the earpiece of the phone and the tissue simulating liquid. The Tissue simulation liquid used for each test is in according with the FCC OET65 supplement C as listed below.

Ingredients (% by weight)	Frequency (MHz)									
	450		835		915		1900		2450	
Tissue Type	Head	Body	Head	Body	Head	Body	Head	Body	Head	Body
Water	38.56	51.16	41.45	52.4	41.05	56.0	54.9	40.4	62.7	73.2
Salt (Nacl)	3.95	1.49	1.45	1.4	1.35	0.76	0.18	0.5	0.5	0.04
Sugar	56.32	46.78	56.0	45.0	56.5	41.76	0.0	58.0	0.0	0.0
HEC	0.98	0.52	1.0	1.0	1.0	1.21	0.0	1.0	0.0	0.0
Bactericide	0.19	0.05	0.1	0.1	0.1	0.27	0.0	0.1	0.0	0.0
Triton x-100	0.0	0.0	0.0	0.0	0.0	0.0	0.0	0.0	36.8	0.0
DGBE	0.0	0.0	0.0	0.0	0.0	0.0	44.92	0.0	0.0	26.7
Dielectric Constant	43.42	58.0	42.54	55.2	42.0	55.9	39.9	53.3	39.8	52.7
Conductivity (s/m)	0.85	0.83	0.91	0.97	1.0	0.98	1.42	1.52	1.80	1.95

6.1 Measurement System Diagram



The DAS3 system for performing compliance tests consist of the following items:

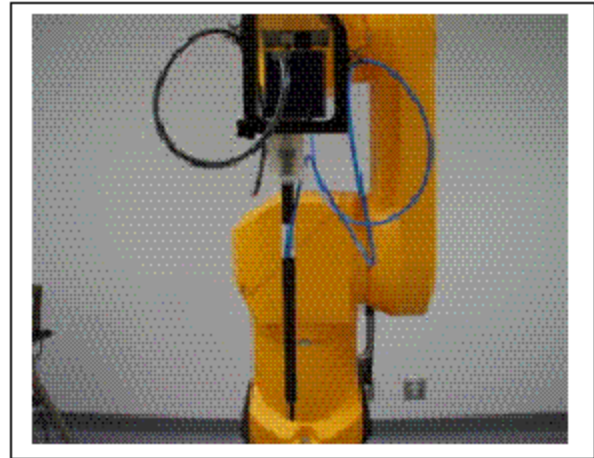
1. A standard high precision 6-axis robot (Stäubli RX family) with controller and software.
2. An arm extension for accommodating the data acquisition electronics (DAE).
3. A dosimetric probe, i.e., an isotropic E-field probe optimized and calibrated for usage in tissue simulating liquid. The probe is equipped with an optical surface detector system.
4. A data acquisition electronic (DAE), which performs the signal amplification, signal multiplexing, AD-conversion, offset measurements, mechanical surface detection, collision detection, etc. The unit is battery powered with standard or rechargeable batteries. The signal is optically transmitted to the EOC.
5. A unit to operate the optical surface detector, which is connected to the EOC. The Electro-optical coupler (EOC) performs the conversion from the optical into a digital electric signal of the DAE. The EOC is connected to the PC plug-in card. The functions of the PC plug-in card based on a DSP is to perform the time critical task such as signal filtering, surveillance of the robot operation fast movement interrupts.
6. A computer operating Windows 95 or larger
7. DAS3 software
8. Remote control with teaches pendant and additional circuitry for robot safety such as warning lamps, etc.
9. The generic twin phantom enabling testing left-hand and right-hand usage.
10. The device holder for handheld EUT.
11. Tissue simulating liquid mixed according to the given recipes (see Application Note).
12. System validation dipoles to validate the proper functioning of the system.

6.2 System Components

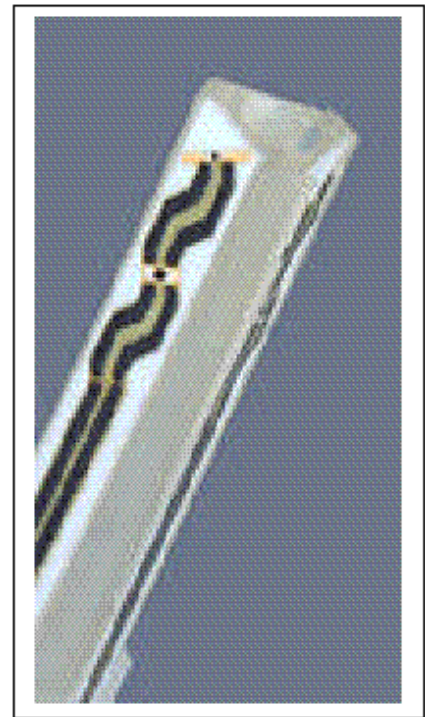
ET3DV6 Probe Specification

Construction Symmetrical design with triangular core
 Built-in optical fiber for surface detection System
 Built-in shielding against static charges
 Calibration In air from 10 MHz to 2.5 GHz
 In brain and muscle simulating tissue at
 Frequencies of 450 MHz, 900 MHz and
 1.8 GHz (accuracy $\pm 8\%$)
 Frequency 10 MHz to > 6 GHz; Linearity: ± 0.2 dB
 (30 MHz to 3 GHz)
 Directivity ± 0.2 dB in brain tissue (rotation around
 probe axis)
 ± 0.4 dB in brain tissue (rotation normal probe axis)
 Dynamic 5 mW/g to > 100 mW/g;
 Range Linearity: ± 0.2 dB
 Surface ± 0.2 mm repeatability in air and clear liquids
 Detection over diffuse reflecting surfaces.
 Dimensions Overall length: 330 mm
 Tip length: 16 mm
 Body diameter: 12 mm
 Tip diameter: 6.8 mm
 Distance from probe tip to dipole centers: 2.7 mm
 Application General dosimetric up to 3 GHz
 Compliance tests of mobile phones
 Fast automatic scanning in arbitrary phantoms

The SAR measurements were conducted with the dosimetric probe ET3DV6 designed in the classical triangular configuration and optimized for dosimetric evaluation. The probe is constructed using the thick film technique; with printed resistive lines on ceramic substrates. The probe is equipped with an optical multi-fiber line ending at the front of the probe tip. It is connected to the EOC box on the robot arm and provides an automatic detection of the phantom surface. Half of the fibers are connected to a pulsed infrared transmitter, the other half to a synchronized receiver. As the probe approaches the surface, the reflection from the surface produces a coupling from the transmitting to the receiving fibers. This reflection increases first during the approach, reaches maximum and then decreases. If the probe is flatly touching the surface, the coupling is zero. The distance of the coupling maximum to the surface is independent of the surface reflectivity and largely independent of the surface to probe angle. The DASY3 software reads the reflection during a software approach and looks for the maximum using a 2nd order fitting. The approach is stopped when reaching the maximum.



Photograph of the probe



Inside view of
ET3DV6 E-field Probe

E-Field Probe Calibration Process

Each probe is calibrated according to a dosimetric assessment procedure described in [6] with accuracy better than +/- 10%. The spherical isotropy was evaluated with the procedure described in [7] and found to be better than +/-0.25dB. The sensitivity parameters (NormX, NormY, NormZ), the diode compression parameter (DCP) and the conversion factor (ConvF) of the probe are tested.

The free space E-field from amplified probe outputs is determined in a test chamber. This is performed in a TEM cell for frequencies below 1 GHz, and in a waveguide above 1 GHz for free space. For the free space calibration, the probe is placed in the volumetric center of the cavity and at the proper orientation with the field. The probe is then rotated 360 degrees.

E-field temperature correlation calibration is performed in a flat phantom filled with the appropriate simulated brain tissue. The measured free space E-field in the medium correlates to temperature rise in dielectric medium. For temperature correlation calibration a RF transparent thermistor-based temperature probe is used in conjunction with the E-field probe.

Data Evaluation

The DASY3 software automatically executes the following procedures to calculate the field units from the microvolt readings at the probe connector. The parameters used in the evaluation are stored in the configuration modules of the software:

Probe Parameter:	-Sensitivity	Norm _i , a _{i0} , a _{i1} , a _{i2}
	-Conversion Factor	ConvFi
	-Diode compression point	Dcp _i
Device parameter:	-Frequency	f
	-Crest Factor	cf
Media parameter:	-Conductivity	σ
	-Density	ñ

These parameters must be set correctly in the software. They can either be found in the component documents or be imported into the software from the configuration files issued for the DASY3 components. In the direct measuring mode of the multi-meter option, the parameters of the actual system setup are used. In the scan visualization and export modes, the parameters stored in the corresponding document files are used.

The first step of the evaluation is a linearization of the filtered input signal to account for the compression characteristics of the detector diode. The compensation depends on the input signal, the diode type and the DC-transmission factor from the diode to the evaluation electronics. If the exciting field is pulsed, the crest factor of the signal must be known to correctly compensate for peak power. The formula for each channel can be given as:

$$V_i = U_i + (U_i)^2 \text{ cf} / \text{dcp}_i$$

With V_i = compensated signal of channel i ($i=x, y, z$)
 U_i = input signal of channel i ($i=x, y, z$)
 cf = crest factor of exciting field (DASY parameter)
 dcp_i = diode compression point (DASY parameter)

From the compensated input signals the primary field data for each channel can be evaluated:

$$\text{E-field probes: } E_i = \sqrt{\frac{V_i}{\text{Norm}_i \cdot \text{ConvF}}}$$

$$\text{H-field probes: } H_i = \sqrt{V_i} \cdot \frac{a_{i0} + a_{i1}f + a_{i2}f^2}{f}$$

With V_i = compensated signal of channel i ($i = x, y, z$)
 Norm_i = sensor sensitivity of channel i ($i = x, y, z$)
 $\text{V}/(\text{V}/\text{m})^2$ for E-field probes
 ConvF = sensitivity enhancement in solution
 a_{ij} = sensor sensitivity factors for H-field probes
 f = carrier frequency [GHz]
 E_i = electric field strength of channel i in V/m
 H_i = diode compression point (DASY parameter)

The RSS value of the field components gives the total field strength (Hermitian magnitude):

$$E_{\text{tot}} = \text{Square Root} [(E_x)^2 + (E_y)^2 + (E_z)^2]$$

The primary field data are used to calculate the derived field units.

$$\text{SAR} = (E_{\text{tot}})^2 \cdot \sigma / (\tilde{n} \cdot 1000)$$

With SAR = local specific absorption rate in mW/g
 E_{tot} = total field strength in V/m
 σ = conductivity in [mho/m] or [Siemens/m]
 \tilde{n} = equivalent tissue density in g/cm^3

Note that the density is normally set to 1 (or 1.06), to account for actual brain density rather than the density of the simulation liquid.

The power flow density is calculated assuming the excitation field as a free space field.

$$P_{\text{pwe}} = (E_{\text{tot}})^2 / 3770 \text{ or } P_{\text{pwe}} = (H_{\text{tot}})^2 \cdot 37.7$$

With P_{pwe} = equivalent power density of a plane wave in mW/cm³
 E_{tot} = total electric field strength in V/m
 H_{tot} = total magnetic field strength in V/m

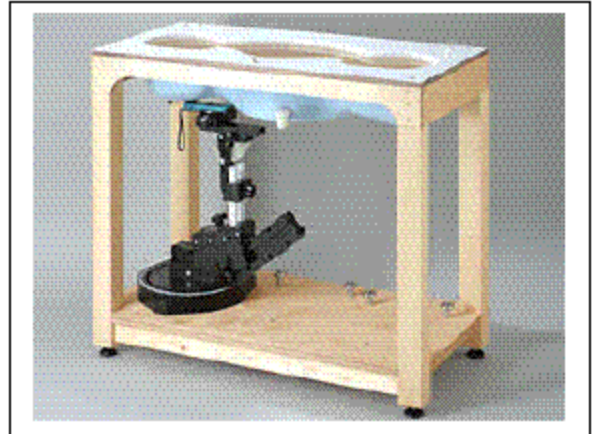
Generic Twin Phantom

The Generic Twin Phantom is constructed of a fiberglass shell integrated in a wooden table. The shape of the shell is based on data from an anatomical study designed to determine the maximum exposure in at least 90% of all users [9][10]. It enables the dosimetric evaluation of left and right hand phone usage as well as body mounted usage at the flat phantom region. A cover prevents the evaporation of the liquid. Reference markings on the Phantom allows the complete setup of all predefined phantom positions and measurement grids by manually teaching three points in the robot.

Shell Thickness 2 ± 0.1 mm

Filling Volume Approx. 20 liters

Dimensions 810 x 1000 x 500 mm (H x L x W)

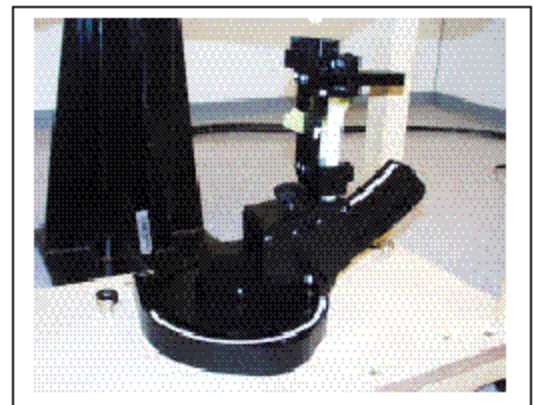


Generic Twin Phantom

Device Holder

In combination with the Generic Twin Phantom V3.0, the Mounting Device enables the rotation of the mounted transmitter in spherical coordinates whereby the rotation points is the ear opening. The devices can be easily, accurately, and repeatedly positioned according to the FCC and CENELEC specifications. The device holder can be locked at different phantom locations (left head, right head, flat phantom).

* Note: A simulating human hand is not used due to the complex anatomical and geometrical structure of the hand that may produced infinite number of configurations [10]. To produce the worst-case condition (the hand absorbs antenna output power), the hand is omitted during the tests.



Device Holder

6.3 Measurement Uncertainty

The uncertainty budget has been determined for the DASY3 measurement system according to the NIS81 [13] and the NIST1297 [14] documents and is given in the following Table.

Uncertainty Description	Error	Distrib.	Weight	Std. Dev.	Offset
Probe Uncertainty					
Axial isotropy	± 0.2 dB	U-shape	0.5	±2.4 %	/
Spherical isotropy	±0.4 dB	U-shape	0.5	±4.8 %	/
Isotropy from gradient	±0.5 dB	U-shape	0	/	/
Spatial resolution	±0.5 %	Normal	1	±0.5 %	/
Linearity error	±0.2 dB	Rectangle	1	±2.7 %	/
Calibration error	±3.3 %	Normal	1	± 3.3 %	/
SAR Evaluation Uncertainty					
Data acquisition error	±1%	Rectangle	1	±0.6 %	/
ELF and RF disturbances	±0.25 %	Normal	1	±0.25 %	/
Conductivity assessment	±10 %	Rectangle	1	± 5.8 %	/
Spatial Peak SAR Evaluation Uncertainty					
Extrapol boundary effect	±3%	Normal	1	±3%	± 5%
Probe positioning error	±0.1 mm	Normal	1	± 1%	/
Integrat. and cube orient	±3%	Normal	1	±3%	/
Cube shape inaccuracies	±2%	Rectangle	1	±1.2 %	/
Device positioning	±6%	Normal	1	± 6%	/
Combined Uncertainties	/	/	1	±11.7 %	± 5%
Extended uncertainty (K = 2)	/	/	/	± 23.5 %.	/

7 - SYSTEM EVALUATION

7.1 Simulated Tissue Liquid Parameter Confirmation

The dielectric parameters were checked prior to assessment using the HP85070A dielectric probe kit. The dielectric parameters measured are reported in each correspondent section:

7.2 Evaluation Procedures

Maximum Search

The maximum search is automatically performed after each coarse scan measurement. It is based on splines in two or three dimensions. The procedure can find the maximum for most SAR distributions even with relatively large grid spacings. After the coarse scan measurement, the probe is automatically moved to a position at the interpolated maximum. The following scan can directly use this position for reference, e.g., for a finer resolution grid or the cube evaluations.

Extrapolation

The extrapolation can be used in z-axis scans with automatic surface detection. The SAR values can be extrapolated to the inner phantom surface. The extrapolation distance is the sum of the probe sensor offset, the surface detection distance and the grid offset. The extrapolation is based on fourth order polynomial functions. The extrapolation is only available for SAR values.

Boundary Corrections

The correction of the probe boundary effect in the vicinity of the phantom surface can be done in two different ways. In the standard (worse case) evaluation, the boundary effect is reduced by different weights for the lowest measured points in the extrapolation routine. The result is a slight overestimation of the extrapolated SAR values (2% to 8%) depending on the SAR distribution and gradient. The advanced evaluation makes a full compensation of the boundary effect before doing the extrapolation. This is only possible of probes with specifications on the boundary effect.

Peak Search for 1g and 10g cube averaged SAR

The 1g and 10g peak evaluations are only available for the predefined cube 4x4x7 and cube 5x5x7 scans. The routine are verified and optimized for the grid dimensions used in these cube measurements. The measured volume of 32x32x35mm contains about 35g of tissue. The first procedure is an extrapolation (incl. Boundary correction) to get the points between the lowest measured plane and the surface. The next step uses 3D interpolation get all points within the measured volume in a 1mm grid (35000 points). In the last step, a 1g cube is place numerically into the volume and its averaged SAR is calculated. This cube is the moved around until the highest averaged SAR is found. This last procedure is repeated for a 10g cube. If the highest SAR is found at the edge of the measured volume, the system will issue a warning,; higher SAR values might be found outside of the measured volume. In that case the cube measurement can be repeated, using the new interpolated maximum as the center.

7.3 System Accuracy Verification

Prior to the assessment, the system validation kit was used to test whether the system was operating within its specifications of $\pm 10\%$. The validation results are tabulated below. And also the corresponding SAR plot is attached as well in the SAR plots files.

IEEE P1528 recommended reference value

Frequency (MHz)	1 g SAR	10 g SAR	Local SAR at surface (above feed point)	Local SAR at surface ($v=2\text{cm}$ offset from feed point)
300	3.0	2.0	4.4	2.1
450	4.9	3.3	7.2	3.2
835	9.5	6.2	14.1	4.9
900	10.8	6.9	16.4	5.4
1450	29.0	16.0	50.2	6.5
1800	38.1	19.8	69.5	6.8
1900	39.7	20.5	72.1	6.6
2000	41.1	21.1	74.6	6.5
2450	52.4	24.0	104.2	7.7
3000	63.8	25.7	140.2	9.5

Validation Dipole SAR Reference Test Result for Body (2450 MHz)

Validation Measurement	SAR @ 0.025W Input averaged over 1g	SAR @ 1W Input averaged over 1g	SAR @ 0.025W Input averaged over 10g	SAR @ 1W Input averaged over 10g
Test 1	14.2	56.80	6.33	25.32
Test 2	14.3	57.20	6.34	25.36
Test 3	14.2	56.80	6.33	25.32
Test 4	14.1	56.40	6.32	25.28
Test 5	14.3	57.20	6.33	25.32
Test 6	14.0	56.00	6.31	25.24
Test 7	14.2	56.80	6.33	25.32
Test 8	14.2	56.80	6.33	25.32
Test 9	14.4	57.60	6.34	25.36
Test 10	14.2	56.80	6.32	25.28
Average	14.21	56.84	6.32	25.31

System validation result

2003-08-22

Simulant	Freq [MHz]	Parameters	Liquid Temp [°C]	Target Value	Measured Value	Deviation [%]	Limits [%]
Body	2450	ϵ	21	52.7	51.1	-3.04	± 5
		σ	21	1.95	1.86	-4.62	± 5
		1g SAR	21	56.84	56.11	-1.28	± 10
Head	2450	ϵ	21	39.8	40.3	1.26	± 5
		σ	21	1.80	1.86	3.33	± 5
		1g SAR	21	52.4	48.62	-7.21	± 10

ϵ = relative permittivity, σ = conductivity and $\rho=1000\text{kg/m}^3$

Note: Body Forward power = 116.2 mW

Head Forward power = 101.2 mW

System Validation for 2450 MHz Body Liquid (Ambient Temp = 23 Deg C, Liquid Temp = 22 Deg C, Forward Power = 20.66 dBm, 8/22/2003)

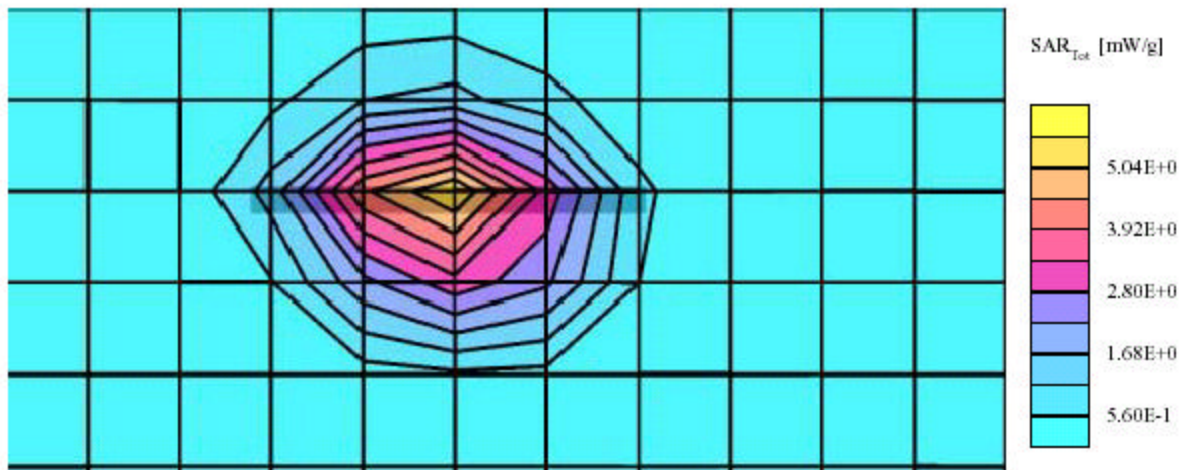
SAM Phantom; Flat Section; Position: (90°, 90°); Frequency: 2450 MHz

Probe: ET3DV6 - SN1604; ConvF(4.30,4.30,4.30); Crest factor: 1.0; 2450 MHz: $\sigma = 1.86 \text{ mho/m}$, $\epsilon_r = 51.1$, $\rho = 1.00 \text{ g/cm}^3$

Cubes (2): SAR (1g): $6.52 \text{ mW/g} \pm 1.00 \text{ dB}$, SAR (10g): $2.86 \text{ mW/g} \pm 0.87 \text{ dB}$, (Worst-case extrapolation)

Coarse: Dx = 12.0, Dy = 12.0, Dz = 10.0

Powerdrift: -0.05 dB



System Validation for 2450 MHz Head Liquid (Ambient Temp = 23 Deg C, Liquid Temp = 21 Deg C, Forward Power = 20.08 dBm, 8/22/2003)

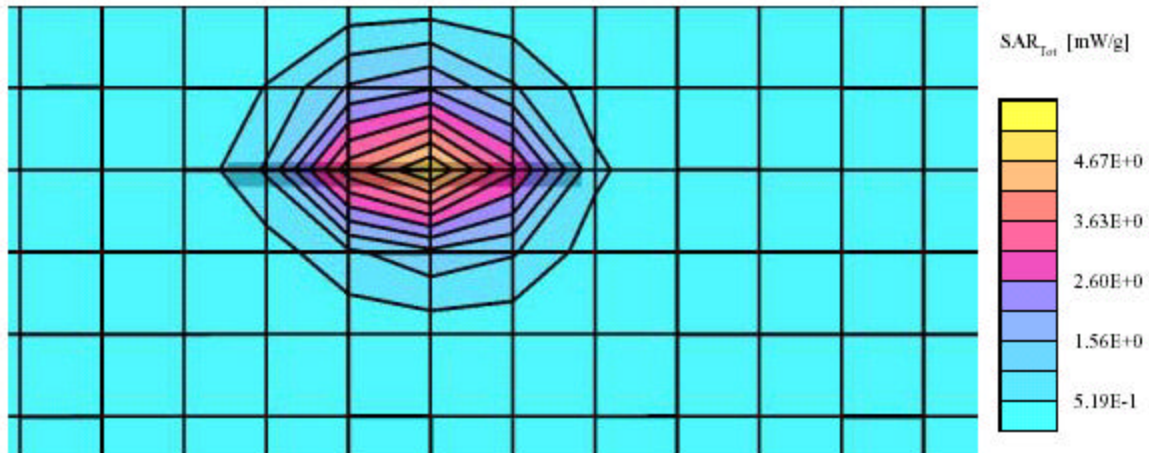
SAM Phantom; Flat Section; Position: (90°,90°); Frequency: 2450 MHz

Probe: ET3DV6 - SN1604; ConvF(4.70,4.70,4.70); Crest factor: 1.0; 2450 MHz: $\sigma = 1.86$ mho/m $\epsilon_r = 40.3$ $\rho = 1.00$ g/cm³

Cube 5x5x7: SAR (1g): 4.92 mW/g, SAR (10g): 1.96 mW/g, (Worst-case extrapolation)

Coarse: Dx = 12.0, Dy = 12.0, Dz = 10.0

Powerdrift: -0.03 dB



7.4 SAR Evaluation Procedure

- a. The evaluation was performed in the applicable area of the phantom depending on the type of device being tested. For device held to the head during normal operation, both the left and right ear positions were evaluated in accordance with FCC OET Bulletin 65, Supplement C (Edition 01-01) using the SAM phantom. For body-worn and face-held devices a planar phantom was used. The EUT in the test setup for body-worn and face-held devices was placed in three different positions (relative to the phantom): parallel, bystand (perpendicular) and 1.5cm separation.
- b. The SAR was determined by a pre-defined procedure within the DASY3 software. Upon completion of a reference and optical surface check, the exposed region of the phantom was scanned near the inner surface with a grid spacing of 20mm x 20mm.
- c. A 5x5x7 matrix was performed around the greatest SAR distribution found during the area scan of the applicable exposed region. SAR values were then calculated using a 3-D spline interpolation algorithm and averaged over spatial volumes of 1 and 10 grams.
- d. The depth of the simulating tissue in the planar used for the SAR evaluation and system validation was no less than 15.0cm.
- e. For this particular evaluation, a stack of low-density, low-loss dielectric foamed polystyrene was used in place of the device holder.
- f. Re-measurement of the SAR value at the same location as in a. If the value changed by more than 5%, the evaluation was repeated.

7.5 Exposure Limits

Table 1: Limits for Occupational/Controlled Exposure (W/kg)

Whole-Body	Partial-Body	Hands. Wrists. Feet and Ankles
0.4	8.0	20.0

Table 2: Limits for General Population/Uncontrolled Exposure (W/kg)

Whole-Body	Partial-Body	Hands. Wrists. Feet and Ankles
0.08	1.6	4.0

Note: Whole-body SAR is averaged over the entire body, partial-body SAR is averaged over any 1 gram of tissue defined as a tissue volume in the shape of a cube SAR for hands, wrists, feet and ankles is averaged over any 10 grams of tissue defined as a tissue volume in the shape of a cube.

Population/Uncontrolled Environments are defined as locations where there is the exposure of individual who have no knowledge or control of their exposure.

Occupational/Controlled Environments are defined as locations where there is exposure that may be incurred by people who are aware of the potential for exposure (i.e. as a result of employment or occupation).

Population/uncontrolled environments Partial-body limit 1.6W/kg applied to the EUT.

8 - TEST RESULTS

This page summarizes the results of the performed dosimetric evaluation. The plots with the corresponding SAR distributions, which reveal information about the location of the maximum SAR with respect to the device could be found in the following pages.

According to the data in section 6.1, the EUT complied with the FCC 2.1093 RF Exposure standards, with worst case of **1.34**.

8.1 SAR Body-Worn Test Data

Ambient Temperature (°C): 23.0

Relative Humidity (%): 49.3

Worst case SAR reading

EUT Position	Ch (MHz)	Conducted Power (dBm)	Worst case SAR, averaged over 1g [mW/g]			
			Setup condition (applicable checked)		Measured	Limit
			Antenna	Phantom		
Back side touching	2437	15.63			0.102	1.6
Face touching	2437	15.63	Built-in	Flat	0.692	1.6
Perpendicular	2437	15.63			0.681	1.6

8.2 Plots of Test Result

The plots of test result were attached as reference.

HTC, Model: PE2080B (Back touching flat phantom, Middle channel, Ambient Temp = 23 Deg C, Liquid Temp = 22 Deg C, 8/22/2003)

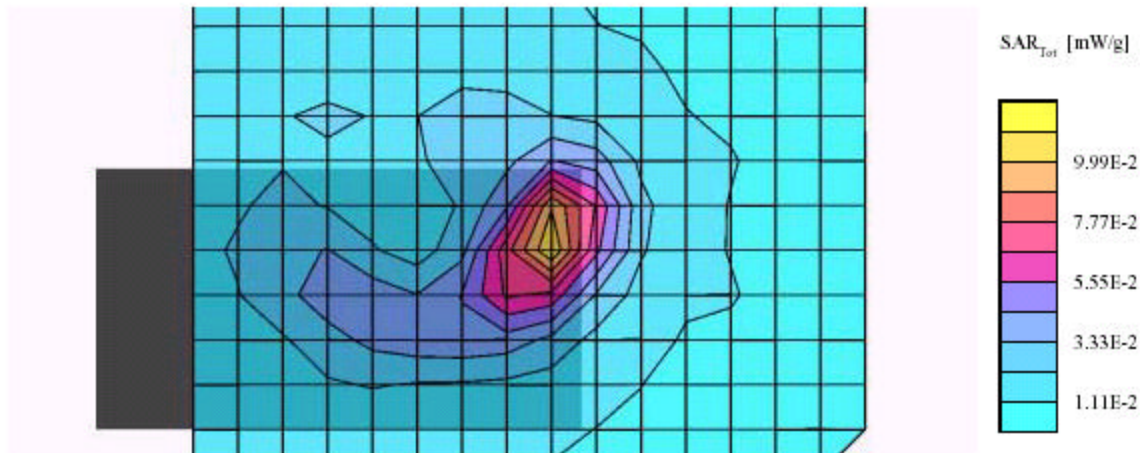
SAM Phantom; Flat Section; Position: (90°,90°); Frequency: 2437 MHz

Probe: ET3DV6 - SN1604; ConvF(4.30,4.30,4.30); Crest factor: 1.0; 2450 MHz: $\sigma = 1.86 \text{ mho/m}$, $\epsilon_r = 51.1$, $\rho = 1.00 \text{ g/cm}^3$

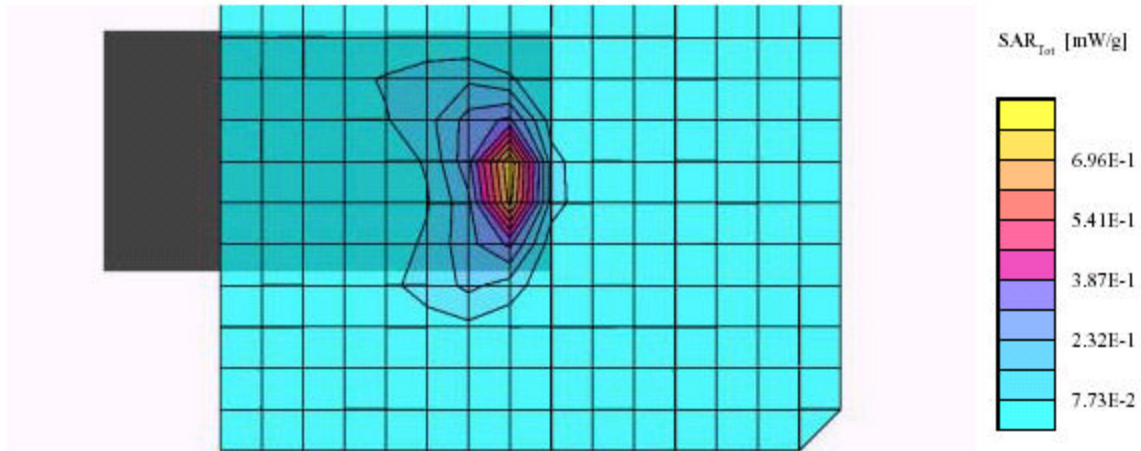
Cube 5x5x7: SAR (1g): 0.102 mW/g, SAR (10g): 0.0528 mW/g, (Worst-case extrapolation)

Coarse: Dx = 12.0, Dy = 12.0, Dz = 10.0

Powerdrift: 0.03 dB



HTC, Model: PE2080B (Face touching flat phantom, Middle channel, Ambient Temp = 23 Deg C, Liquid Temp = 22 Deg C, 8/22/2003)
SAM Phantom; Flat Section; Position: (90°,90°); Frequency: 2437 MHz
Probe: ET3DV6 - SN1604; ConvF(4.30,4.30,4.30); Crest factor: 1.0; 2450 MHz: $\sigma = 1.86$ mho/m, $\epsilon_r = 51.1$ $\rho = 1.00$ g/cm³
Cube 5x5x7: SAR (1g): 0.692 mW/g, SAR (10g): 0.270 mW/g, (Worst-case extrapolation)
Coarse: Dx = 12.0, Dy = 12.0, Dz = 10.0
Powerdrift: -0.03 dB



HTC, Model: PE2080B (Perpendicular to flat phantom, Middle channel, Ambient Temp = 23

Deg C, Liquid Temp = 22 Deg C, 8/22/2003)

SAM Phantom; Flat Section; Position: (90°,90°); Frequency: 2437 MHz

Probe: ET3DV6 - SN1604; ConvF(4.30,4.30,4.30); Crest factor: 1.0; 2450 MHz: $\sigma = 1.86 \text{ mho/m}$, $\epsilon_r = 51.1$ $\rho = 1.00 \text{ g/cm}^3$

Cube 5x5x7: SAR (1g): 0.681 mW/g, SAR (10g): 0.276 mW/g, (Worst-case extrapolation)

Coarse: Dx = 12.0, Dy = 12.0, Dz = 10.0

Powerdrift: -0.02 dB

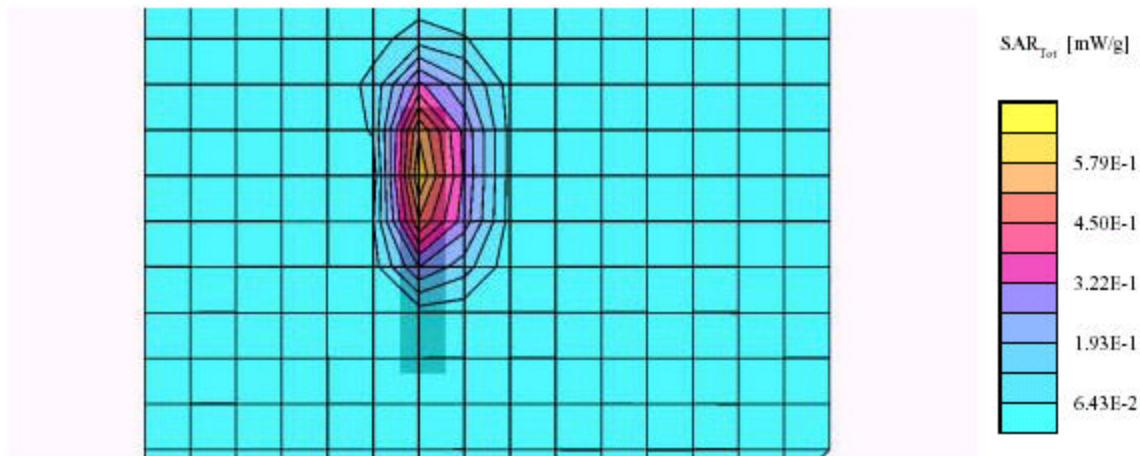
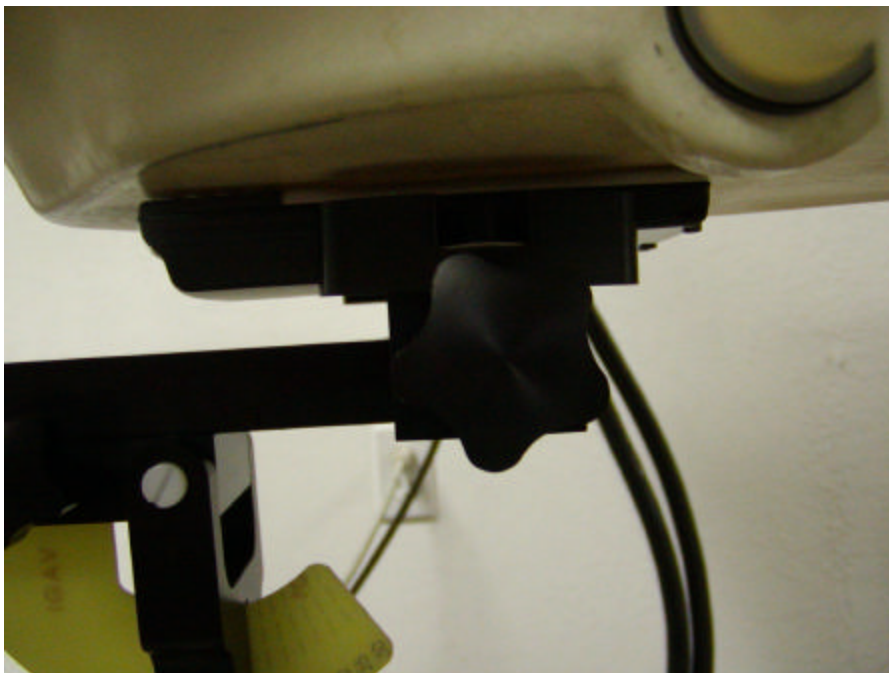


EXHIBIT A - SAR SETUP PHOTOGRAPHS

Back Side Touching Flat Phantom



Face Touching Flat Phantom



Perpendicular to Flat Phantom

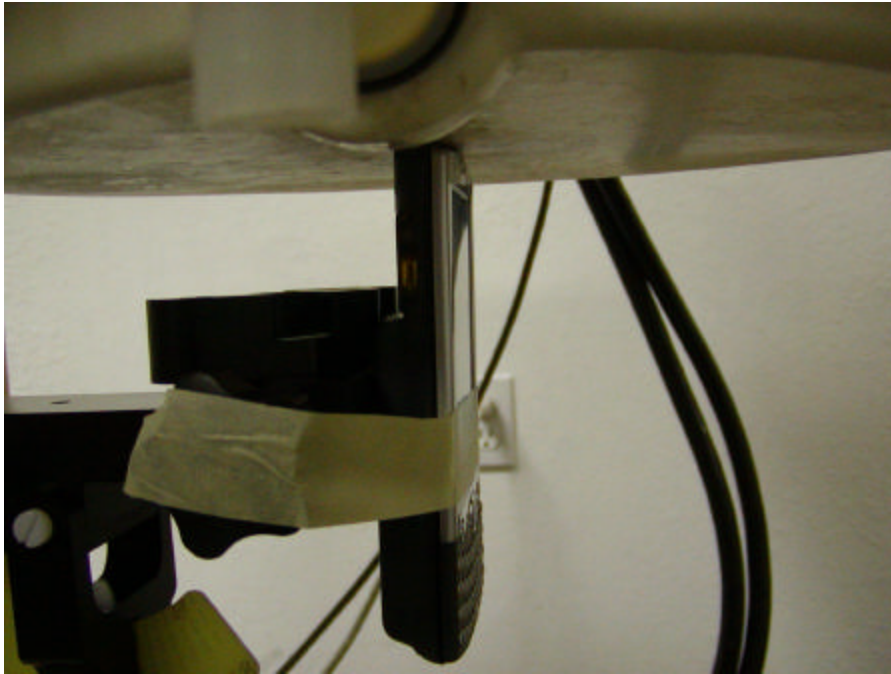


EXHIBIT B - EUT PHOTOGRAPHS

EUT – Top View



EUT – Bottom View



EUT – Port View



AC Adapter View



Adapter View



Battery View



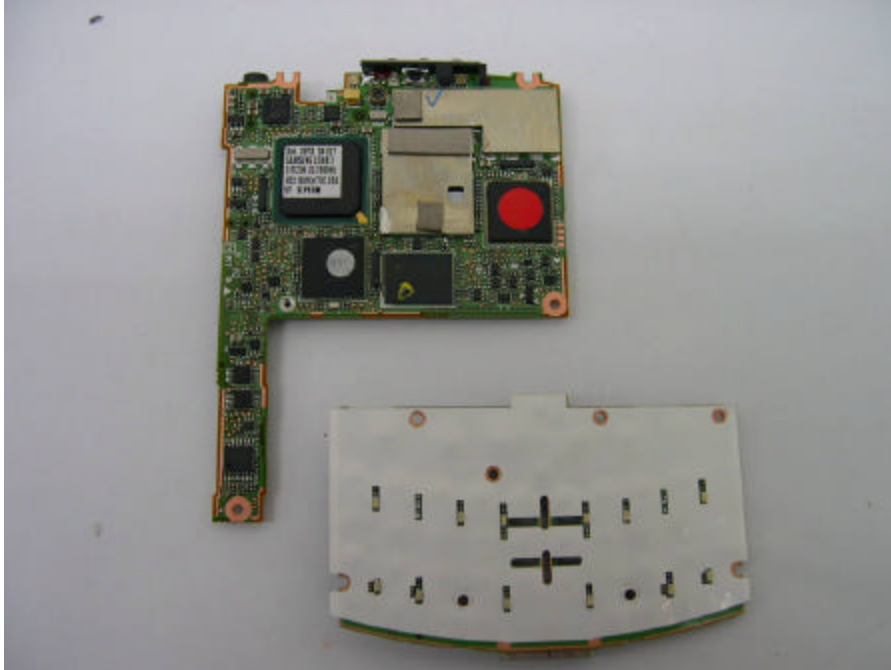
Battery Charger



EUT – Board and Housing



EUT – Transceiver Board Top



EUT – Transceiver Board Bottom



EXHIBIT C – Z-Axis

HTC, Model: PE2080B (Perpendicular to flat phantom, Middle channel, Ambient Temp = 22 Deg C, Liquid Temp = 22 Deg C, 8/22/2003)

SAM Phantom; Section: Position: ; Frequency: 2437 MHz

Probe: ET3DV6 - SN1604; ConvF(4.30,4.30,4.30); Crest factor: 1.0; 2450 MHz: $\sigma = 1.85 \text{ mho/m}$ $\epsilon_r = 51.1$ $\rho = 1.00 \text{ g/cm}^3$

$\epsilon_i = 0$

Z-Axis: Dx = 0.0, Dy = 0.0, Dz = 2.0

