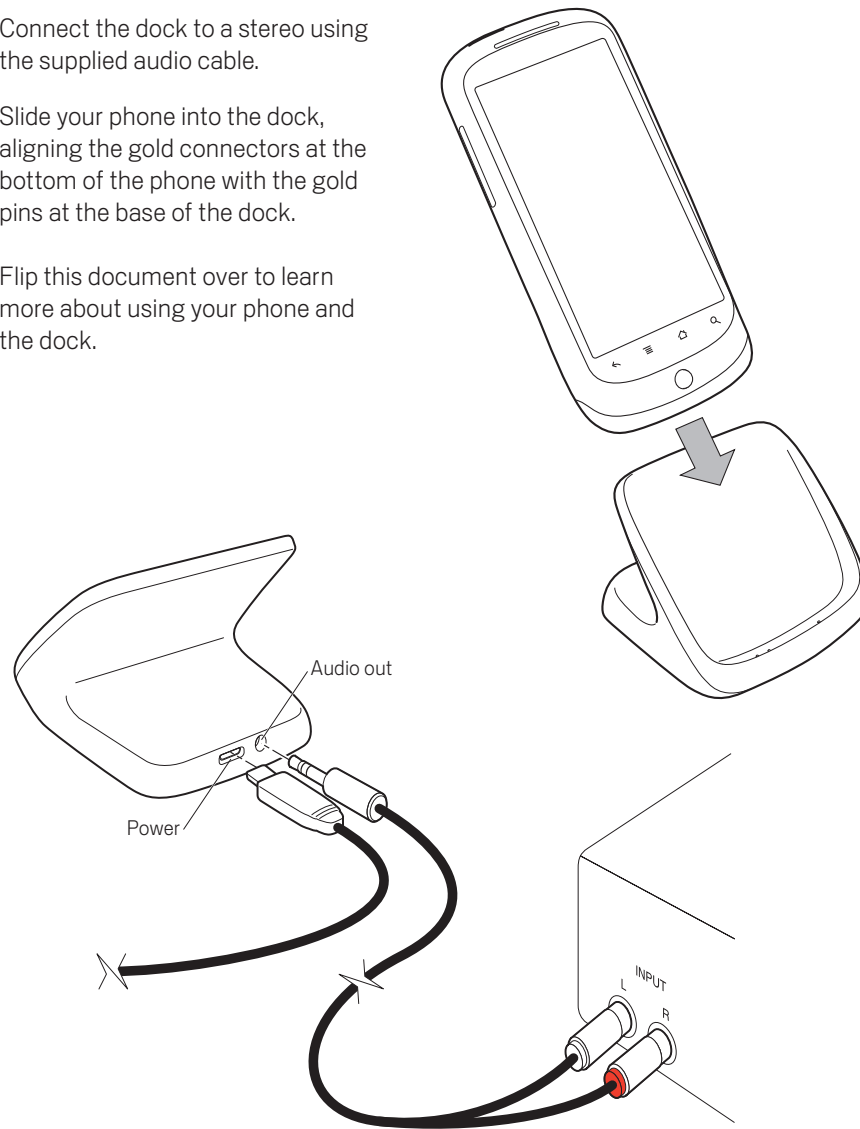


nexus one™

Desktop Dock

Assembly

- 1 Plug the charger into an AC outlet and into the dock.
- 2 Connect the dock to a stereo using the supplied audio cable.
- 3 Slide your phone into the dock, aligning the gold connectors at the bottom of the phone with the gold pins at the base of the dock.
- 4 Flip this document over to learn more about using your phone and the dock.



Google, Android, Nexus One, and the stylized Nexus One logo are trademarks of Google Inc.

All other company and product names may be trademarks of the companies with which they are associated.

Copyright © 2009 Google Inc.
NODD-2.1.0-EN-005

Nexus One desktop dock

The Nexus One™ desktop dock offers a convenient way to charge your phone and to play music from your phone through a stereo. It also features a desktop clock application.

Connecting

- 1 Plug the supplied charger into an AC outlet and then plug the other end into the dock.
- 2 Connect the 3.5mm stereo plug on the supplied audio cable into the audio jack on the dock and the left (black) and right (red) RCA connectors to a stereo's inputs.
- 3 Slide your phone into the dock, aligning the gold pins at the bottom of the dock with the connectors at the bottom of the phone.

Charging

The status light on the front of the phone turns amber while the phone is charging. It turns green when the phone is fully charged.

Pairing

The phone transmits music to the dock via a Bluetooth™ connection. The first time you insert the phone in the dock, they pair automatically and you're prompted to choose whether you want to play music and other media audio via the dock's 3.5mm stereo audio jack.

Clock

When you insert the phone in the dock, the Clock application opens.

Clock displays the current date and time on top of your Home screen wallpaper. It also displays your local weather, using settings from the News & Weather application.



Touch to dim the screen, so you can use the docked phone as a bedside clock.



Touch to set or cancel alarms, so you can use your phone as an alarm clock. The next scheduled alarm is displayed in the main Clock screen.



Touch to view a picture or slideshow of the photos on your phone.



Touch to play music you've stored on your phone's SD card: the audio signal can be transmitted out the dock's 3.5mm stereo audio jack.



Touch to open the Home screen.

If you don't use the phone for a few minutes, Clock switches to screen-saver mode: Touch the screen or any button to view Clock again.

Answering the phone

If the phone rings, any music you're playing stops temporarily:

Lift the phone out of the dock and



Drag to answer to the phone

Or leave the phone in the dock and



Drag to divert calls to voicemail

You can also use the phone when it's docked, using the wired headset that came with the phone or with a Bluetooth headset.

Listening to music

If you connect the dock to a stereo using the supplied stereo audio cable, you can use music from your phone on your stereo, using the Music application or another application that plays or streams audio.

Learn more

Read all about your phone, the Clock application, pairing Bluetooth devices, and the many Android™ applications, in the *Nexus One User's Guide*, available from:

google.com/phone/support

Warning! The dock power port does not transmit data. Use only the supplied charger. Never connect the dock to a computer.