



# Hearing Aid Compatibility (HAC) RF Emissions Test Report

for  
HTC Corporation  
on the  
Pocket PC Phone

**Report Number** : HA920507-01A  
**Model Name** : CEDA100  
**FCC ID** : NM8CEDA100  
**Date of Testing** : Feb. 18, 2009 ~ Feb. 19, 2009  
**Date of Report** : Mar. 13, 2009  
**Date of Review** : Mar. 13, 2009

- **Results Summary : M Category = M3 (ANSI C63.19-2007)**
- The test results refer exclusively to the presented test model/sample only.
- Without written approval of SPORTON INTERNATIONAL INC., the test report shall not be reproduced except in full.
- Report Version: Rev.01

## **SPORTON INTERNATIONAL INC.**

*No. 52, Hwa Ya 1<sup>st</sup> Rd., Hwa Ya Technology Park, Kwei-Shan Hsiang, Tao Yuan Hsien, Taiwan, R.O.C.*



Table of Contents

1. Statement of Compliance .....3
2. Administration Data .....4
2.1 Testing Laboratory .....4
2.2 Applicant .....4
2.3 Manufacturer .....4
2.4 Application Details .....4
3. General Information .....5
3.1 Description of Device Under Test (DUT) .....5
3.3 Applied Standards .....5
3.4 Test Conditions .....6
3.4.1 Ambient Condition .....6
3.4.2 Test Configuration .....6
4. Hearing Aid Compliance (HAC) .....7
4.1 Introduction .....7
5. HAC Measurement Setup .....8
5.1 DASY4 E-Field and H-Field Probe System .....9
5.2 System Specification .....9
5.2.1 ER3DV6 E-Field Probe Description .....9
5.2.2 H3DV6 H-Field Probe Description .....9
5.2.3 Probe Tip Description .....10
5.3 DATA Acquisition Electronics (DAE) .....12
5.4 Robot .....12
5.5 Measurement Server .....12
5.6 Phone Positioner .....13
5.6.1 Test Arch Phantom .....14
5.7 Data Storage and Evaluation .....15
5.7.1 Data Storage .....15
5.7.2 Data Evaluation .....15
5.8 Test Equipment List .....17
6. Uncertainty Assessment .....18
7. HAC Measurement Evaluation .....20
7.1 Purpose of System Performance check .....20
7.2 System Setup .....20
7.3 Validation Results .....22
8. RF Field Probe Modulation Factor .....23
9. Description for DUT Testing Position .....26
10. RF Emissions Test Procedure .....28
11. HAC Test Results .....29
11.1 Conducted Power .....29
11.2 E-Field Emission .....29
11.3 H-Field Emission .....29
12. References .....30

- Appendix A - System Performance Check Data
Appendix B - HAC Measurement Data
Appendix C - Calibration Date
Appendix D - CDMA2000 Test Modes for HAC
Appendix E - Product Photographs
Appendix F - Setup Photographs



**1. Statement of Compliance**

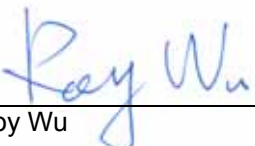
The Hearing Aid Compliance (HAC) maximum results found during testing for the **HTC Corporation Pocket PC Phone CEDA100** are as follows (with expanded uncertainty  $\pm 29.4\%$  for E-field and  $\pm 21.8\%$  for H-field):

Band	E-Field (V/m)	M Rating	H-Field (A/m)	M Rating
CDMA2000 Cellular	108.4	M4	0.262	M4
CDMA2000 PCS	92.2	M3	0.301	M3

They are in compliance with HAC limits specified in guidelines FCC 47 CFR §20.19 and ANSI Standard ANSI C63.19 for HAC Rated category M3.

**Results Summary : M Category = M3 (ANSI C63.19-2007)**

Approved by

  
\_\_\_\_\_  
Roy Wu  
Manager



## **2. Administration Data**

### **2.1 Testing Laboratory**

**Company Name :** Sporton International Inc.  
**Address :** No. 52, Hwa-Ya 1st RD., Hwa Ya Technology Park, Kwei-Shan Hsiang, TaoYuan Hsien, Taiwan, R.O.C.  
**Test Site :** SAR01-HY  
**Telephone Number :** 886-3-327-3456  
**Fax Number :** 886-3-328-4978

### **2.2 Applicant**

**Company Name :** HTC Corporation  
**Address :** No. 23, Xinghua Rd., Taoyuan City, Taiwan

### **2.3 Manufacturer**

**Company Name :** HTC Corporation  
**Address:** 1F, No. 6-3, Baoqiang Rd., Xindian City, Taipei County, Taiwan

### **2.4 Application Details**

**Date of reception of application:** Feb. 05, 2009  
**Start of test :** Feb. 18, 2009  
**End of test :** Feb. 19, 2009



3. General Information

3.1 Description of Device Under Test (DUT)

Product Feature & Specification	
DUT Type :	Pocket PC Phone
Model Name :	CEDA100
FCC ID :	NM8CEDA100
Tx Frequency :	CDMA2000 Cellular : 824 ~ 849 MHz CDMA2000 PCS : 1850 ~ 1910 MHz
Rx Frequency :	CDMA2000 Cellular : 869 ~ 894 MHz CDMA2000 PCS : 1930 ~ 1990 MHz
Maximum Output Power to Antenna :	CDMA2000 Cellular : 24.66 dBm CDMA2000 PCS : 24.73 dBm
Antenna Type :	Fixed Internal Antenna
Type of Modulation :	QPSK
DUT Stage :	Identical Prototype

Remark: This device does not support HAC and V.O.I.P. function. It means that the functions of WLAN and Bluetooth do not have voice capability in the held to ear mode.

3.2 Product Photos

Refer to Appendix D.

3.3 Applied Standards

The ANSI Standard ANSI C63.19-2007 represents performance requirements for acceptable interoperability of hearing aids with wireless communications devices. When these parameters are met, a hearing aid operates acceptably in close proximity to a wireless communications device.

The following AWF factors shall be used for the standard transmission protocols:

Standard	Technology	AWF (dB)
TIA/EIA/IS-2000	CDMA	0
TIA/EIA-136	TDMA (50 Hz)	0
J-STD-007	GSM (217)	-5
T1/T1P1/3GPP	UMTS (WCDMA)	0
iDENTM	TDMA (22 and 11 Hz)	0

Table 3.1 Articulation Weighting Factor (AWF)



Category	Telephone RF Parameters				
	Near Field	AWF	E-Field Emissions		H-Field Emissions
<b>&lt; 960 MHz</b>					
Category M1	0	631.0 – 1122.0	V/m	1.91 – 3.39	A/m
	-5	473.2 – 841.4	V/m	1.43 – 2.54	A/m
Category M2	0	354.8 – 631.0	V/m	1.07 – 1.91	A/m
	-5	266.1 – 473.2	V/m	0.80 – 1.43	A/m
Category M3	0	199.5 – 354.8	V/m	0.6 – 1.07	A/m
	-5	149.6 – 266.1	V/m	0.45 – 0.80	A/m
Category M4	0	< 199.5	V/m	< 0.60	A/m
	-5	< 149.6	V/m	< 0.45	A/m
<b>&gt; 960 MHz</b>					
Category M1	0	199.5 – 354.8	V/m	0.60 – 1.07	A/m
	-5	149.6 – 266.1	V/m	0.45 – 0.80	A/m
Category M2	0	112.2 – 199.5	V/m	0.34 – 0.60	A/m
	-5	84.1 – 149.6	V/m	0.25 – 0.45	A/m
Category M3	0	63.1 – 112.2	V/m	0.19 – 0.34	A/m
	-5	47.3 – 84.1	V/m	0.14 – 0.25	A/m
Category M4	0	< 63.1	V/m	< 0.19	A/m
	-5	< 47.3	V/m	< 0.14	A/m

Table 3.2 Telephone near-field categories in linear units

**3.4 Test Conditions**

**3.4.1 Ambient Condition**

Ambient Temperature	20-24
Humidity	<60 %

**3.4.2 Test Configuration**

The device was controlled by using a base station emulator R&S CMU200. Communication between the device and the emulator was established by air link.

Measurements were performed on the low, middle and high channels of both bands.

The DUT was set from the emulator to radiate maximum output power during all tests.

The worst configuration of CDMA2000 is RC1+SO55 shown as appendix D. The RC1+SO55 mode was used for all RF emission test.



## **4. Hearing Aid Compliance (HAC)**

### **4.1 Introduction**

The federal communication commission (FCC) adopted ANSI C63.19 as HAC test standard.

## 5. HAC Measurement Setup

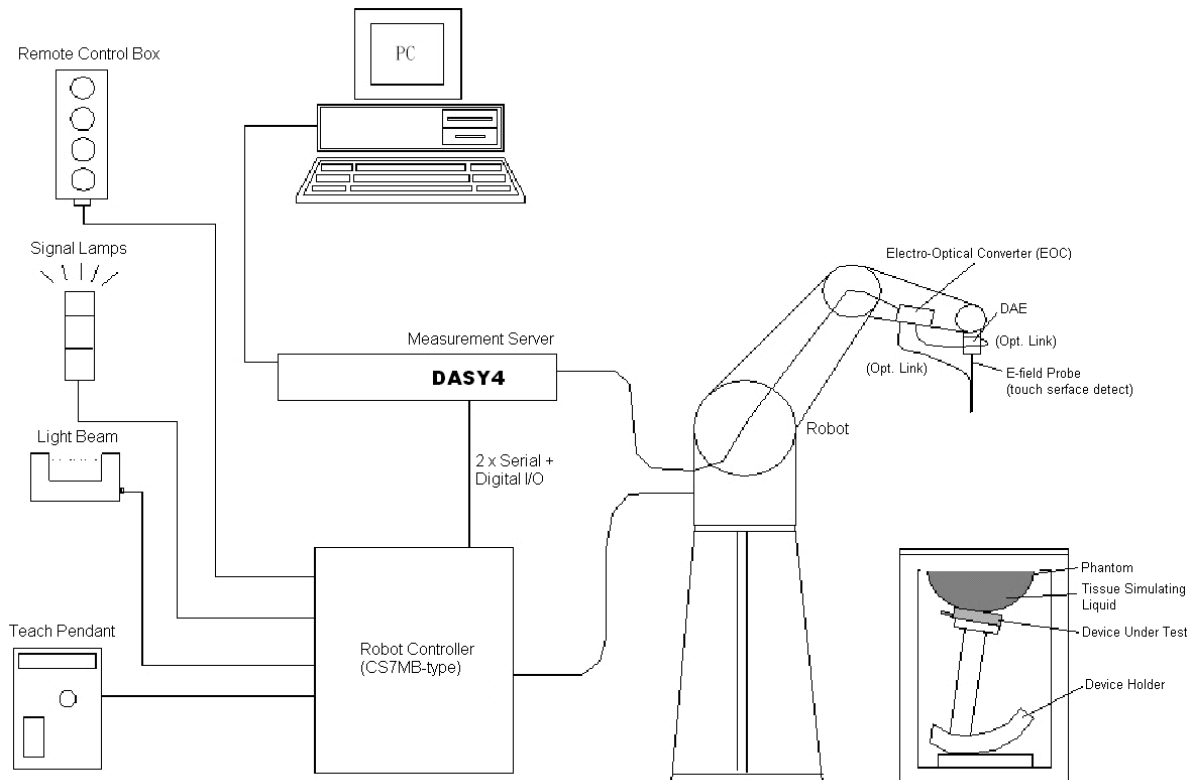


Fig. 5.1 DASY4 system

The DASY4 system for performance compliance tests is illustrated above graphically. This system consists of the following items:

- A standard high precision 6-axis robot with controller, a teach pendant and software
- A data acquisition electronic (DAE) attached to the robot arm extension
- A dosimetric probe equipped with an optical surface detector system
- The electro-optical converter (EOC) performs the conversion between optical and electrical signals
- A measurement server performs the time critical tasks such as signal filtering, control of the robot operation and fast movement interrupts.
- A probe alignment unit which improves the accuracy of the probe positioning
- A computer operating Windows XP
- DASY4 software
- Remote control with teach pendant and additional circuitry for robot safety such as warning lamps, etc.
- The SAM twin phantom
- A device holder
- Dipole for evaluating the proper functioning of the system
- Arch Phantom

Some of the components are described in details in the following sub-sections.



### 5.1 DASY4 E-Field and H-Field Probe System

The HAC measurement is conducted with the dosimetric probe ER3DV6 and H3DV6 (manufactured by SPEAG). The probe is specially designed and calibrated. This probe has a built in optical surface detection system to prevent from collision with DUT.

### 5.2 System Specification

#### 5.2.1 ER3DV6 E-Field Probe Description

<b>Construction</b>	One dipole parallel, two dipoles normal to probe axis Built-in shielding against static charges
<b>Calibration</b>	In air from 100 MHz to 3.0 GHz (absolute accuracy $\pm 6.0\%$ , $k=2$ )
<b>Frequency</b>	100 MHz to 6 GHz; Linearity: $\pm 2.0$ dB (100 MHz to 3 GHz)
<b>Directivity</b>	$\pm 0.2$ dB in air (rotation around probe axis) $\pm 0.4$ dB in air (rotation normal to probe axis)
<b>Dynamic Range</b>	2 V/m to 1000 V/m (M3 or better device readings fall well below diode compression point)
<b>Linearity</b>	$\pm 0.2$ dB
<b>Dimensions</b>	Overall length: 330 mm (Tip: 16 mm) Tip diameter: 8 mm (Body: 12 mm) Distance from probe tip to dipole centers: 2.5 mm



Fig. 5.2 E-field Free-space Probe

#### 5.2.2 H3DV6 H-Field Probe Description

<b>Construction</b>	Three concentric loop sensors with 3.8 mm loop diameters Resistively loaded detector diodes for linear response Built-in shielding against static charges
<b>Frequency</b>	200 MHz to 3 GHz (absolute accuracy $\pm 6.0\%$ , $k=2$ ); Output linearized
<b>Directivity</b>	$\pm 0.25$ dB (spherical isotropy error)
<b>Dynamic Range</b>	10 m A/m to 2 A/m at 1 GHz (M3 or better device readings fall well below diode compression point)
<b>Dimensions</b>	Overall length: 330 mm (Tip: 40 mm) Tip diameter: 6 mm (Body: 12 mm) Distance from probe tip to dipole centers: 3 mm
<b>E-Field Interference</b>	$< 10\%$ at 3 GHz (for plane wave)



Fig. 5.3 H-field Free-space Probe

### 5.2.3 Probe Tip Description

HAC field measurements take place in the close near field with high gradients. Increasing the measuring distance from the source will generally decrease the measured field values (in case of the validation dipole approx. 10% per mm).

Magnetic field sensors are measuring the integral of the H-field across their sensor area surrounded by the loop. They are calibrated in a precise, homogeneous field. When measuring a gradient field, the result will be very close to the field in the center of the loop which is equivalent to the value of a homogeneous field equivalent to the center value. But it will be different from the field at the field at the border of the loop.

Consequently, two sensors with different loop diameters – both calibrated ideally – would give different results when measuring from the edge of the probe sensor elements. The behavior for electrically small E-field sensors is equivalent. See below for distance plots from a WD which show the conservative nature of field readings at the probe element center vs. measurements at the sensor end:

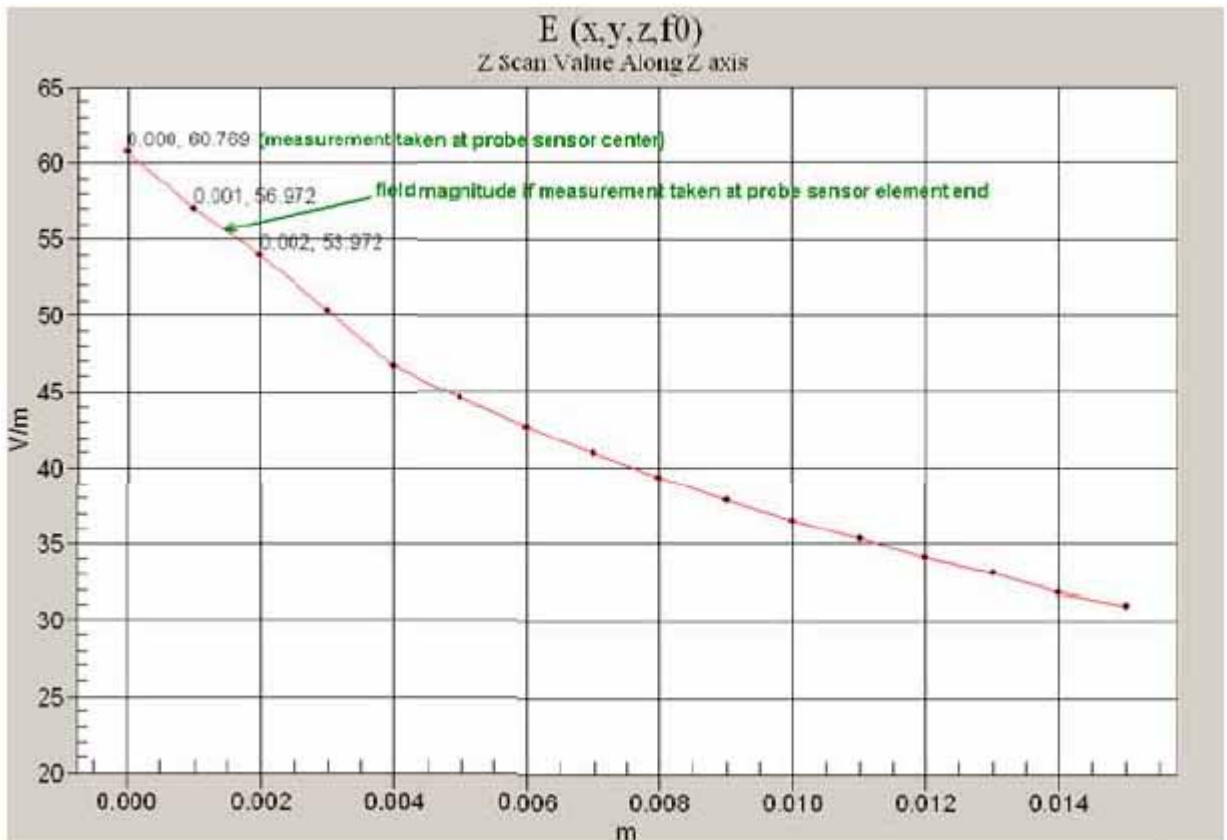


Fig. 5.4 Z-Axis Scan at maximum point above a typical wireless device for E-field

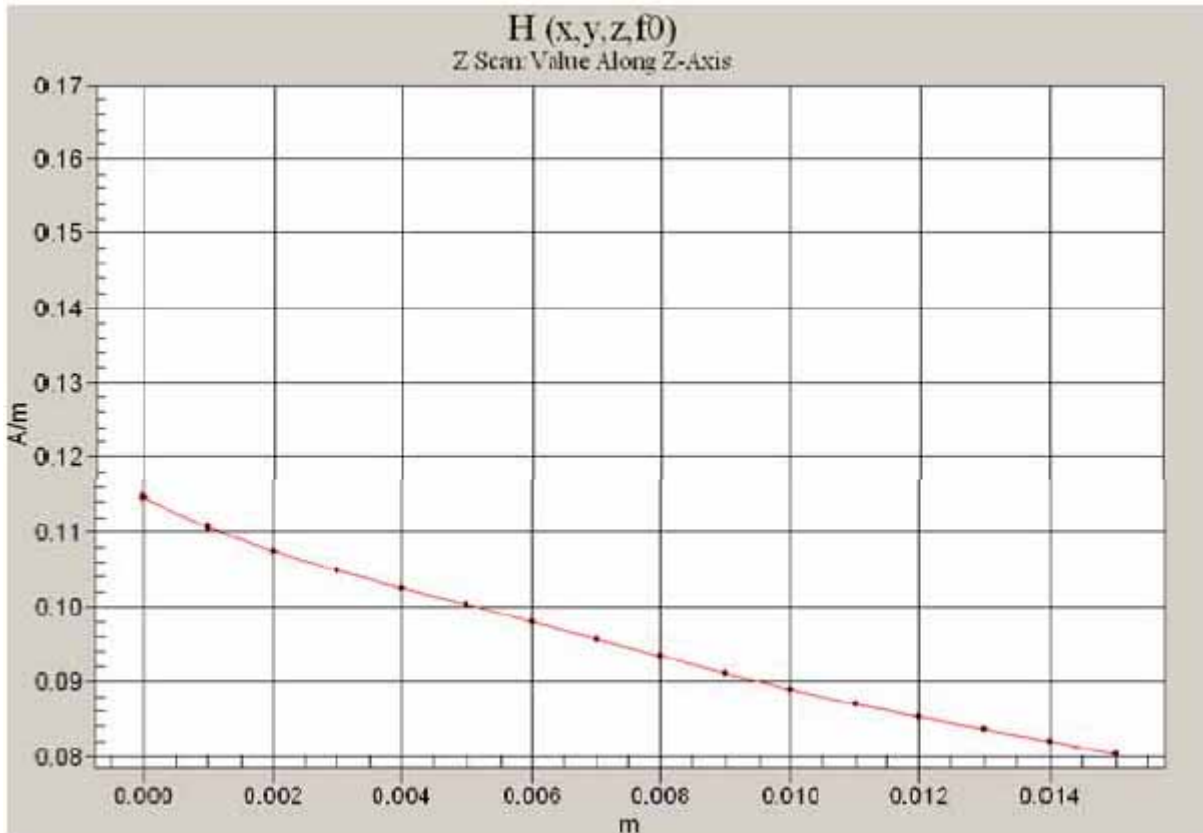


Fig. 5.5 Z-Axis Scan at maximum point above a typical wireless device for H-field

The magnetic field loops of the H3D probes are concentric, with the center 3mm from the tip for H3DV6. Their radius is 1.9 mm.

The electric field probes have a more irregular internal geometry because it is physically not possible to have the 3 orthogonal sensors situated with the same center. The effect of the different sensor centers is accounted for in the HAC uncertainty budget (“sensor displacement”). Their geometric center is at 2.5 mm from the tip, and the element ends are 1.1 mm closer to the tip.

Where:

Peak Field = Peak field (in dB V/m or dB A/m)

Raw = Raw field measurement from the measurement system (in V/m or A/m).

PMF = Probe Modulation Factor (in Linear units). See Chapter 8 of test report.



### **5.3 DATA Acquisition Electronics (DAE)**

The data acquisition electronics (DAE) consists of a highly sensitive electrometer-grade preamplifier with auto-zeroing, a channel and gain-switching multiplexer, a fast 16 bit AD-converter and a command decoder and control logic unit. Transmission to the measurement server is accomplished through an optical downlink for data and status information as well as an optical uplink for commands and the clock.

The mechanical probe mounting device includes two different sensor systems for frontal and sideways probe contacts. They are used for mechanical surface detection and probe collision detection.

The input impedance of the DAE is 200M Ohm; the inputs are symmetrical and floating. Common mode rejection is above 80dB.

### **5.4 Robot**

The DASY4 system uses the high precision robots RX90BL type out of the newer series from Stäubli SA (France). For the 6-axis controller DASY4 system, the CS7MB robot controller version from Stäubli is used. The RX robot series have many features that are important for our application:

- High precision (repeatability 0.02 mm)
- High reliability (industrial design)
- Jerk-free straight movements
- Low ELF interference (the closed metallic construction shields against motor control fields)
- 6-axis controller

### **5.5 Measurement Server**

The DASY4 measurement server is based on a PC/104 CPU board with  
166 MHz CPU  
32 MB chipset and  
64 MB RAM.

Communication with  
the DAE electronic box  
the 16-bit AD-converter system for optical detection and digital I/O interface.

The measurement server performs all the real-time data evaluation for field measurements and surface detection, controls robot movements and handles safety operations.

## 5.6 Phone Positioner

The phone positioner shown in Fig. 5.8 is used to adjust DUT to the suitable position.



**Fig. 5.6 Phone Positioner**

5.6.1 Test Arch Phantom

Construction	Enables easy and well defined positioning of the phone and validation dipoles as well as simple teaching of the robot.
Dimensions	370 x 370 x 370 mm

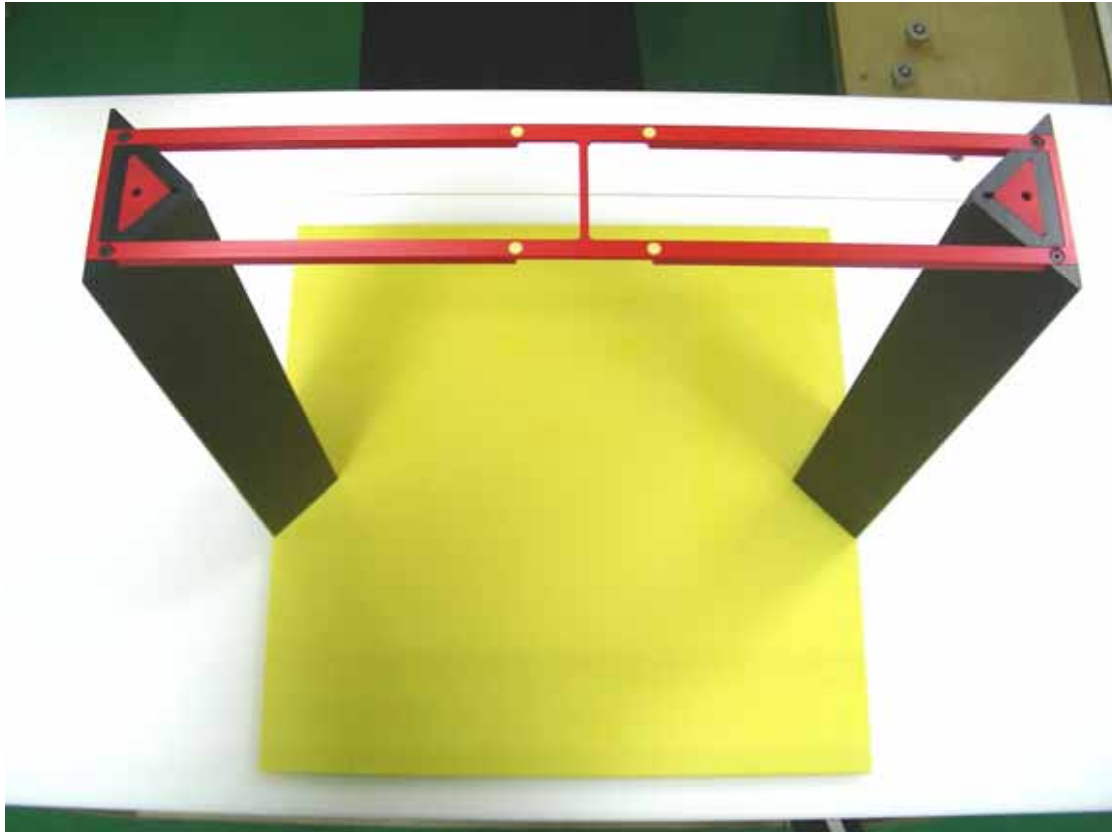


Fig. 5.7 Test Arch Phantom



5.7 Data Storage and Evaluation

5.7.1 Data Storage

The DASY4 software stores the assessed data from the data acquisition electronics as raw data (in microvolt readings from the probe sensors), together with all the necessary software parameters for the data evaluation (probe calibration data, and device frequency and modulation data) in measurement files with the extension .DA4. The post-processing software evaluates the desired unit and format for output each time the data is visualized or exported. This allows verification of the complete software setup even after the measurement and allows correction of erroneous parameter settings.

5.7.2 Data Evaluation

The DASY4 post-processing software (SEMCAD) automatically executes the following procedures to calculate the field units from the microvolt readings at the probe connector. The parameters used in the evaluation are stored in the configuration modules of the software :

- Probe parameters :**
  - Sensitivity Norm<sub>j</sub>, a<sub>ρ</sub>, a<sub>1</sub>, a<sub>2</sub>
  - Conversion factor ConvF<sub>j</sub>
  - Diode compression point dcp<sub>j</sub>
- Device parameters :**
  - Frequency f
  - Crest factor cf
- Media parameters :**
  - Conductivity σ
  - Density ρ

These parameters must be set correctly in the software. They can be found in the component documents or they can be imported into the software from the configuration files issued for the DASY components. In the direct measuring mode of the multi-meter option, the parameters of the actual system setup are used. In the scan visualization and export modes, the parameters stored in the corresponding document files are used.

The first step of the evaluation is a linearization of the filtered input signal to account for the compression characteristics of the detector diode. The compensation depends on the input signal, the diode type and the DC-transmission factor from the diode to the evaluation electronics. If the exciting field is pulsed, the crest factor of the signal must be known to correctly compensate for peak power. The formula for each channel can be given as :

$$V_i = U_i + U_i^2 \cdot \frac{cf}{dcp_i}$$

- with **V<sub>i</sub>** = compensated signal of channel i (i = x, y, z)
- U<sub>j</sub>** = input signal of channel i (i = x, y, z)
- cf** = crest factor of exciting field (DASY parameter)
- dcp<sub>j</sub>** = diode compression point (DASY parameter)



From the compensated input signals, the primary field data for each channel can be evaluated :

E-field probes : E\_i = sqrt(V\_i / (Norm\_i \* ConvF))

H-field probes : H\_i = sqrt(V\_i \* (a\_i0 + a\_i1\*f + a\_i2\*f^2) / f)

- with V\_i = compensated signal of channel i (i = x, y, z)
Norm\_i = sensor sensitivity of channel i (i = x, y, z)
ConvF = sensitivity enhancement in solution
a\_ij = sensor sensitivity factors for H-field probes
f = carrier frequency [GHz]
E\_i = electric field strength of channel i in V/m
H\_i = magnetic field strength of channel i in A/m

The RSS value of the field components gives the total field strength (Hermitian magnitude) :

E\_tot = sqrt(E\_x^2 + E\_y^2 + E\_z^2)

The primary field data are used to calculate the derived field units.

The power flow density is calculated assuming the excitation field to be a free space field.

P\_pwe = (E\_tot^2) / 3770 or P\_pwe = H\_tot^2 \* 37.7

- with P\_pwe = equivalent power density of a plane wave in mW/cm^2
E\_tot = total electric field strength in V/m
H\_tot = total magnetic field strength in A/m

The measurement/integration time per point, as specified by the system manufacturer is >500 ms.

The signal response time is evaluated as the time required by the system to reach 90% of the expected final value after an on/off switch of the power source with an integration time of 500 ms and a probe response time of <5 ms. In the current implementation, DASY4 waits longer than 100 ms after having reached the grid point before starting a measurement, i.e., the response time uncertainty is negligible.

If the device under test does not emit a CW signal, the integration time applied to measure the electric field at a specific point may introduce additional uncertainties due to the discretization. The tolerances for the different systems had the worst-case of 2.6%.





**5.8 Test Equipment List**

Manufacturer	Name of Equipment	Type/Model	Serial Number	Calibration	
				Last Cal.	Due Date
SPEAG	Isotropic E-Filed Probe	ER3DV6	2358	Jan. 14, 2009	Jan. 13, 2010
SPEAG	Isotropic H-Filed Probe	H3DV6	6184	Jan. 19, 2009	Jan. 18, 2010
SPEAG	Audio Magnetic 1D Field Probe	AM1DV2	1038	Jan. 12, 2009	Jan. 11, 2010
SPEAG	Audio Magnetic Calibration Coil	AMCC	1049	NCR	NCR
SPEAG	Audio Measuring Instrument	AMMI	1041	NCR	NCR
SPEAG	835MHz Calibration Dipole	CD835V3	1045	Sep. 25, 2007	Sep. 24, 2009
SPEAG	1880MHz Calibration Dipole	CD1880V3	1038	Sep. 27, 2007	Sep. 26, 2009
SPEAG	2450MHz Calibration Dipole	CD2450V3	1039	Sep. 27, 2007	Sep. 26, 2009
SPEAG	Data Acquisition Electronics	DAE3	577	Nov. 12, 2008	Nov. 11, 2009
SPEAG	Data Acquisition Electronics	DAE4	778	Sep. 22, 2008	Sep. 21, 2009
SPEAG	Test Arch Phantom	N/A	N/A	NCR	NCR
SPEAG	Phone Positoiner	N/A	N/A	NCR	NCR
Agilent	Wireless Communication Test Set	E5515C	MY48360820	Dec. 15, 2008	Dec. 14, 2009
R&S	Universal Radio Communication Tester	CMU200	105934	Nov. 11, 2008	Nov. 10, 2009
Agilent	Dual Directional Coupler	778D	50422	NCR	NCR
AR	Power Amplifier	5S1G4M2	0328767	NCR	NCR
R&S	Power Meter	NRVD	101394	Oct. 20, 2008	Oct. 19, 2009
R&S	Power Sensor	NRV-Z1	100130	Oct. 20, 2008	Oct. 19, 2009

**Table 5.1 Test Equipment List**



### 6. Uncertainty Assessment

The component of uncertainty may generally be categorized according to the methods used to evaluate them. The evaluation of uncertainty by the statistical analysis of a series of observations is termed a Type A evaluation of uncertainty. The evaluation of uncertainty by means other than the statistical analysis of a series of observation is termed a Type B evaluation of uncertainty. Each component of uncertainty, however evaluated, is represented by an estimated standard deviation, termed standard uncertainty, which is determined by the positive square root of the estimated variance.

A Type A evaluation of standard uncertainty may be based on any valid statistical method for treating data. This includes calculating the standard deviation of the mean of a series of independent observations; using the method of least squares to fit a curve to the data in order to estimate the parameter of the curve and their standard deviations; or carrying out an analysis of variance in order to identify and quantify random effects in certain kinds of measurement.

A type B evaluation of standard uncertainty is typically based on scientific judgment using all of the relevant information available. These may include previous measurement data, experience and knowledge of the behavior and properties of relevant materials and instruments, manufacture’s specification, data provided in calibration reports and uncertainties assigned to reference data taken from handbooks. Broadly speaking, the uncertainty is either obtained from an outdoor source or obtained from an assumed distribution, such as the normal distribution, rectangular or triangular distributions indicated in Table 7.1

Uncertainty Distributions	Normal	Rectangular	Triangular	U-shape
Multiplying factor <sup>(a)</sup>	1/k (b)	1/√3	1/√6	1/√2

- (a) standard uncertainty is determined as the product of the multiplying factor and the estimated range of variations in the measured quantity
- (b)  $\kappa$  is the coverage factor

**Table 6.1 Multiplying Factors for Various Distributions**

The combined standard uncertainty of the measurement result represents the estimated standard deviation of the result. It is obtained by combining the individual standard uncertainties of both Type A and Type B evaluation using the usual “root-sum-squares” (RSS) methods of combining standard deviations by taking the positive square root of the estimated variances.

Expanded uncertainty is a measure of uncertainty that defines an interval about the measurement result within which the measured value is confidently believed to lie. It is obtained by multiplying the combined standard uncertainty by a coverage factor. Typically, the coverage factor ranges from 2 to 3. Using a coverage factor allows the true value of a measured quantity to be specified with a defined probability within the specified uncertainty range. For purpose of this document, a coverage factor two is used, which corresponds to confidence interval of about 95 %. The DASY4 uncertainty Budget is showed in Table 6.2.



Error Description	Uncertainty Value ( $\pm$ %)	Probability Distribution	Divisor	(Ci) E	(Ci) H	Std. Unc. E	Std. Unc. H
<b>Measurement System</b>							
Probe Calibration	$\pm 5.1$	Normal	1	1	1	$\pm 5.1$	$\pm 5.1$
Axial Isotropy	$\pm 4.7$	Rectangular	$\sqrt{3}$	1	1	$\pm 2.7$	$\pm 2.7$
Sensor Displacement	$\pm 16.5$	Rectangular	$\sqrt{3}$	1	0.145	$\pm 9.5$	$\pm 1.4$
Boundary Effect	$\pm 2.4$	Rectangular	$\sqrt{3}$	1	1	$\pm 1.4$	$\pm 1.4$
Linearity	$\pm 4.7$	Rectangular	$\sqrt{3}$	1	1	$\pm 2.7$	$\pm 2.7$
Scaling to Peak Envelope Power	$\pm 2.0$	Rectangular	$\sqrt{3}$	1	1	$\pm 1.2$	$\pm 1.2$
System Detection Limit	$\pm 1.0$	Rectangular	$\sqrt{3}$	1	1	$\pm 0.6$	$\pm 0.6$
Readout Electronics	$\pm 0.3$	Normal	1	1	1	$\pm 0.3$	$\pm 0.3$
Response Time	$\pm 0.8$	Rectangular	$\sqrt{3}$	1	1	$\pm 0.5$	$\pm 0.5$
Integration Time	$\pm 2.6$	Rectangular	$\sqrt{3}$	1	1	$\pm 1.5$	$\pm 1.5$
RF Ambient Conditions	$\pm 3.0$	Rectangular	$\sqrt{3}$	1	1	$\pm 1.7$	$\pm 1.7$
RF Reflections	$\pm 12.0$	Rectangular	$\sqrt{3}$	1	1	$\pm 6.9$	$\pm 6.9$
Probe Positioner	$\pm 1.2$	Rectangular	$\sqrt{3}$	1	0.67	$\pm 0.7$	$\pm 0.5$
Probe Positioning	$\pm 4.7$	Rectangular	$\sqrt{3}$	1	0.67	$\pm 2.7$	$\pm 1.8$
Extrap. and Interpolation	$\pm 1.0$	Rectangular	$\sqrt{3}$	1	1	$\pm 0.6$	$\pm 0.6$
<b>Test Sample Related</b>							
Device Positioning Vertical	$\pm 4.7$	Rectangular	$\sqrt{3}$	1	0.67	$\pm 2.7$	$\pm 1.8$
Device Positioning Lateral	$\pm 1.0$	Rectangular	$\sqrt{3}$	1	1	$\pm 0.6$	$\pm 0.6$
Device Holder and Phantom	$\pm 2.4$	Rectangular	$\sqrt{3}$	1	1	$\pm 1.4$	$\pm 1.4$
Power Drift	$\pm 5.0$	Rectangular	$\sqrt{3}$	1	1	$\pm 2.9$	$\pm 2.9$
<b>Phantom and Setup Related</b>							
Phantom Thickness	$\pm 2.4$	Rectangular	$\sqrt{3}$	1	0.67	$\pm 1.4$	$\pm 0.9$
<b>Combined Standard Uncertainty</b>						<b><math>\pm 14.7</math></b>	<b><math>\pm 10.9</math></b>
<b>Coverage Factor for 95 %</b>		<b>K=2</b>					
<b>Expanded uncertainty (Coverage factor = 2)</b>						<b><math>\pm 29.4</math></b>	<b><math>\pm 21.8</math></b>

Table 6.2 Uncertainty Budget of DASY4

## 7. HAC Measurement Evaluation

Each DASY4 system is equipped with one or more system validation kits. These units, together with the predefined measurement procedures within the DASY4 software, enable the user to conduct the system performance check and system validation. System validation kit includes a dipole, tripod holder to fix it underneath the test Arch and a corresponding distance holder.

### 7.1 Purpose of System Performance check

The system performance check verifies that the system operates within its specifications. System and operator errors can be detected and corrected. It is recommended that the system performance check be performed prior to any usage of the system in order to guarantee reproducible results. The system performance check uses normal HAC measurements in a simplified setup with a well characterized source. This setup was selected to give a high sensitivity to all parameters that might fail or vary over time. The system check does not intend to replace the calibration of the components, but indicates situations where the system uncertainty is exceeded due to drift or failure.

### 7.2 System Setup

In the simplified setup for system evaluation, the DUT is replaced by a calibrated dipole and the power source is replaced by a continuous wave which comes from a signal generator at frequency 835 and 1880 MHz. The calibrated dipole must be placed beneath the flat phantom section of the ARC with the correct distance holder. The equipment setup is shown below:

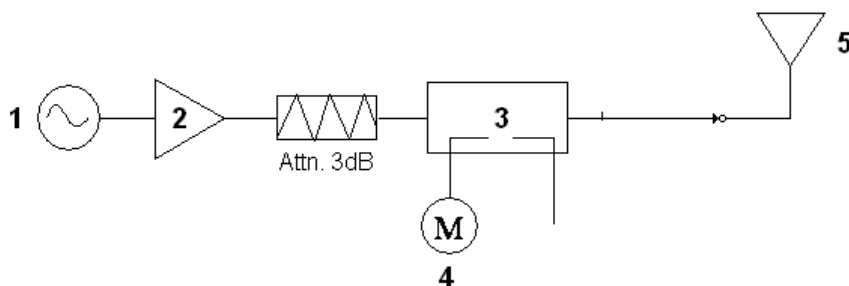
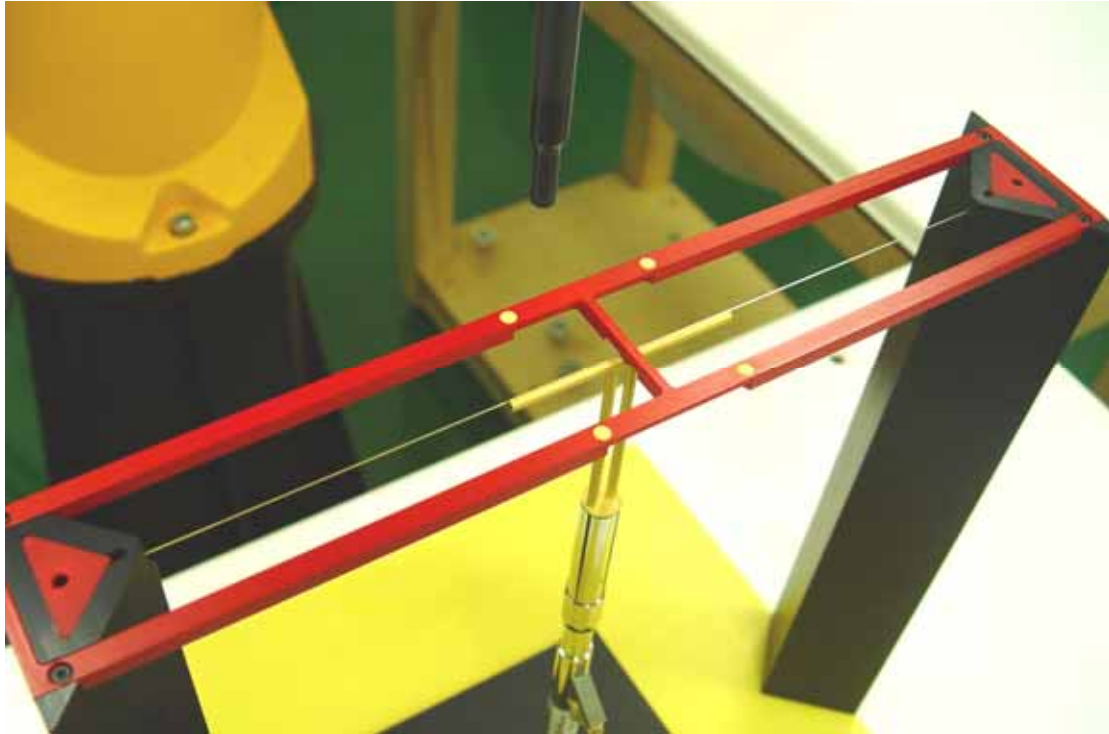


Fig. 7.1 System Setup of System Evaluation

1. Signal Generator
2. Amplifier
3. Directional Coupler
4. Power Meter
5. 835 or 1880 MHz Dipole

The output power on dipole port must be calibrated to 20dBm (100mW) before dipole is connected.



**Fig 7.2 Dipole Setup**



7.3 Validation Results

Frequency (MHz)	Input Power (dBm)	E-field Result (V/m)	Target Field (V/m)	Deviation (%)
835	20.0	175.75	167.1	5.18
1880	20.0	148.50	138.9	6.91

Table 7.1 E-field System Validation

Frequency (MHz)	Input Power (dBm)	H-field Result (A/m)	Target Field (A/m)	Deviation (%)
835	20.0	0.459	0.453	1.32
1880	20.0	0.494	0.471	4.88

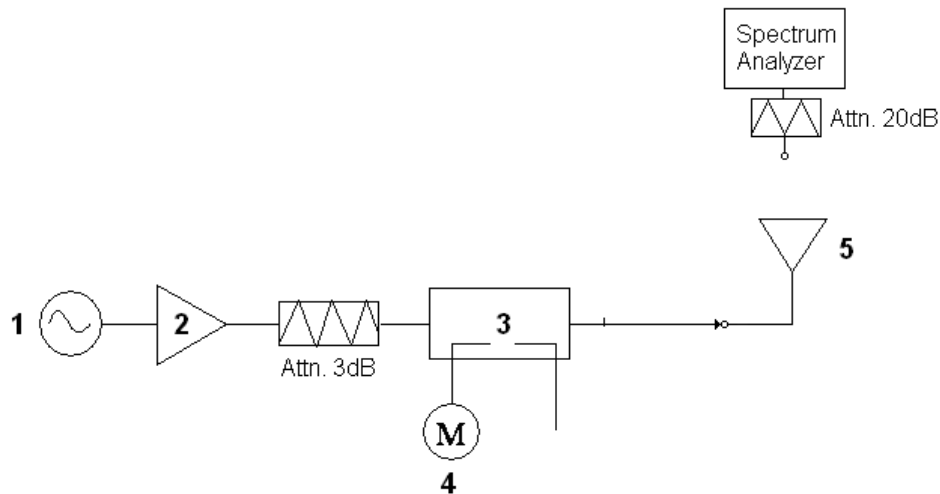
Table 7.2 H-field System Validation

Remark: Deviation = ((E or H-field Result) - (Target field)) / (Target field) \* 100%

The table above indicates the system performance check can meet the variation criterion, ±25%.

## 8. RF Field Probe Modulation Factor

A calibration shall be made of the modulation response of the probe and its instrumentation chain. This calibration shall be performed with the field probe, attached to the instrumentation that is to be used with it during the measurement. The response of the probe system to a CW field at the frequency(s) of interest is compared to its response to a modulated signal with equal peak amplitude. The field level of the test signals shall be more than 10 dB above the ambient level and the noise floor of the instrumentation being used. The ratio of the CW reading to that taken with a modulated field shall be applied to the readings taken of modulated fields of the specified type.



**Fig. 8.1 System Calibration**

This was done using the following procedure:

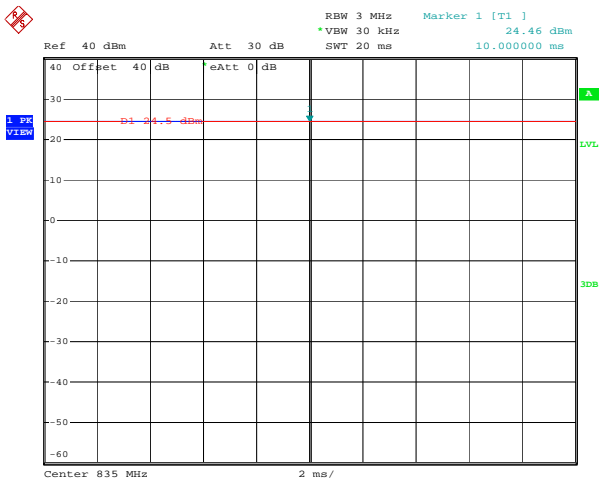
1. Fixing the probe in a set location relative to a field generating device.
2. Illuminate the probe with a CW signal at the intended measurement frequency.
3. Record the reading of the probe measurement system of the CW signal.
4. Determine the level of the CW signal being used to drive the field generating device.
5. Substitute a signal using the same modulation as that used by the intended WD for the CW signal.
6. Set the peak amplitude during transmission of the modulated signal to equal the amplitude of the CW signal.
7. Record the reading of the probe measurement system of the modulated signal.
8. The ratio of the CW to modulated signal reading is the modulation factor.
9. Repeat 2~8 steps at intended measurement frequency for both E and H field probe.



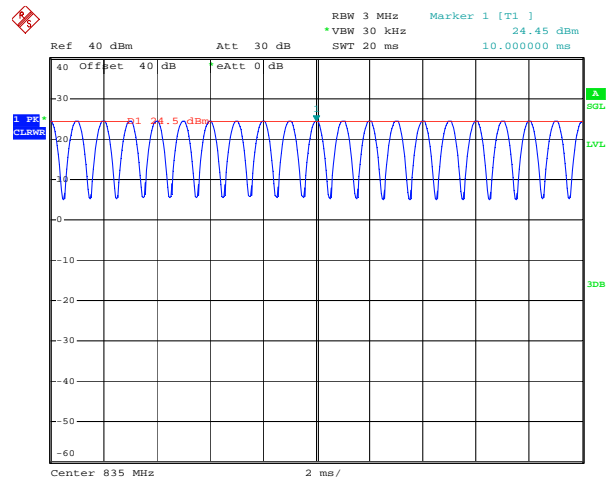
PMF Measurement Summary:

Frequency	Functions	E-field	H-field	PMF	
		V/m	A/m	E-field	H-field
835MHz	CW	277.9	0.79	-	-
835MHz	AM	170.5	0.519	1.63	1.52
835MHz	CDMA	287.2	0.854	0.968	0.925
835MHz	CMDA 1/8	94.38	0.292	2.94	2.71
1880MHz	CW	320.9	1.063	-	-
1880MHz	AM	194.1	0.802	1.65	1.33
1880MHz	CDMA	326.15	1.315	0.98	0.81
1880MHz	CMDA 1/8	100.8	0.398	3.18	2.67

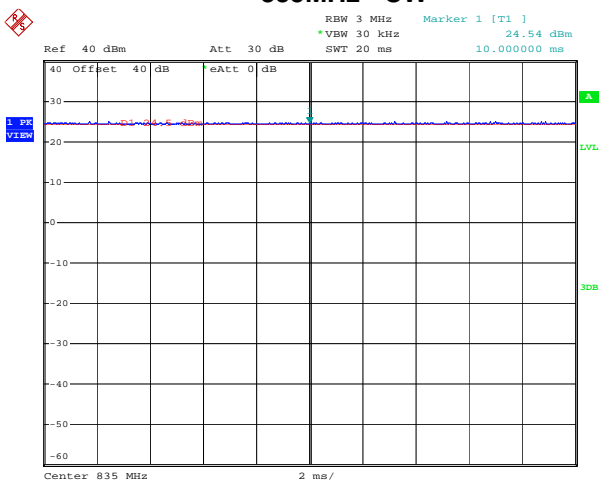
Zero span Spectrum Plots for RF Field Probe Modulation Factor



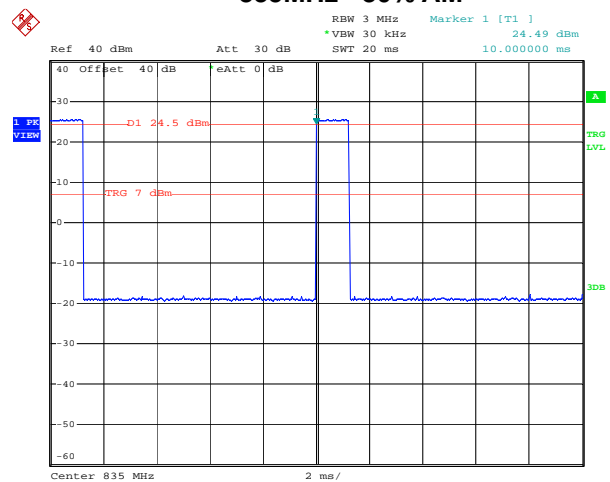
835MHz - CW



835MHz - 80% AM

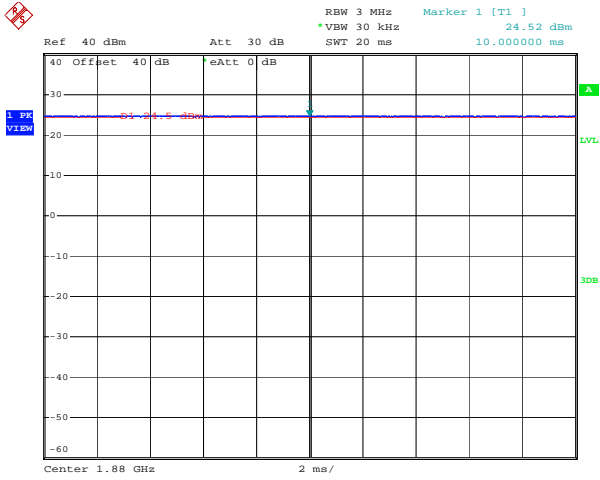


835MHz - CDMA (Full Rate)

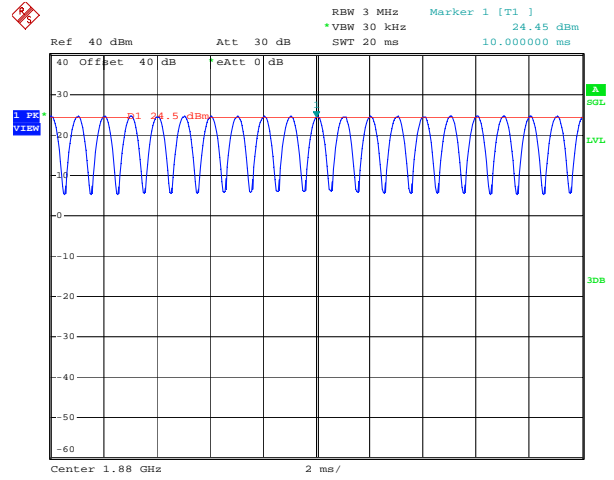


835MHz - CDMA (1/8 Rate)

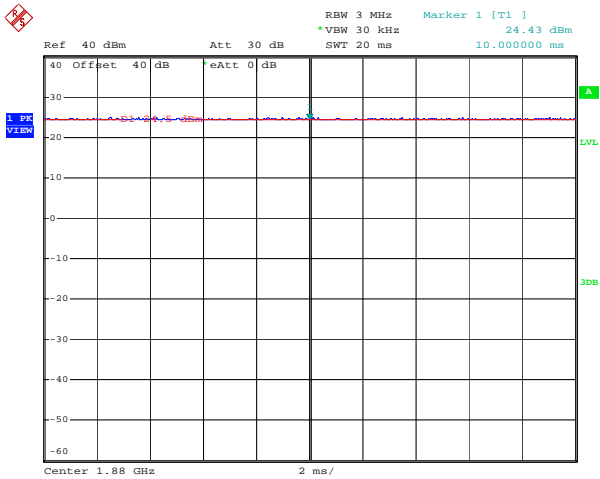




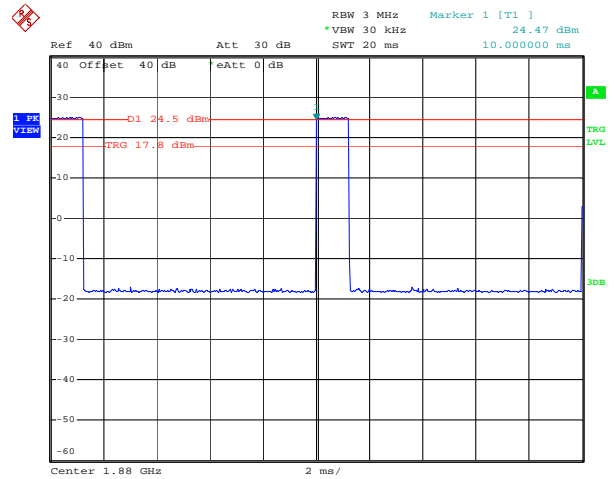
1880MHz - CW



1880MHz - 80% AM



1880MHz - CDMA (Full Rate)



1880MHz - CDMA (1/8 Rate)

### 9. Description for DUT Testing Position

The DUT was put on device holder and adjusted to the accurate and reliable position.

Figure 9.1 illustrate the references and reference plane that shall be used in a typical DUT emissions measurement. The principle of this section is applied to DUT with similar geometry.

- The grid is 5 cm by 5 cm area that is divided into 9 evenly sized blocks or sub-grids.
- The grid is centered on the audio frequency output transducer of the DUT.
- The grid is in a reference plane, which is defined as the planar area that contains the highest point in the area of the phone that normally rests against the user's ear. It is parallel to the centerline of the receiver area of the phone and is defined by the points of the receiver-end of the DUT handset, which, in normal handset use, rest against the ear.
- The measurement plane is parallel to, and 15 mm in front of, the reference plane.

Remark: Setup photographs can be referred to Appendix E.



Figure 9.1: A typical DUT reference and plane for HAC measurements

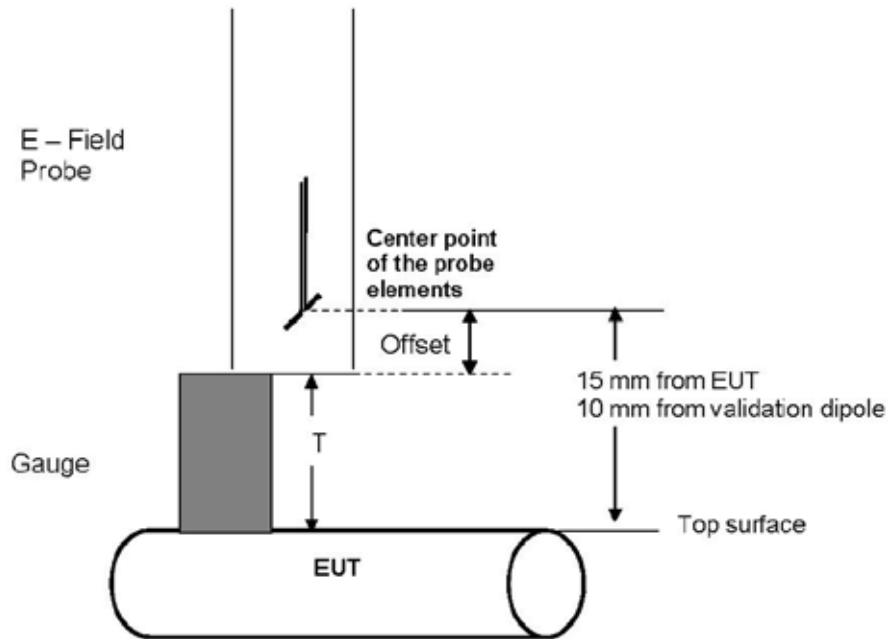


Figure 9.2: Gauge block with E-field probe

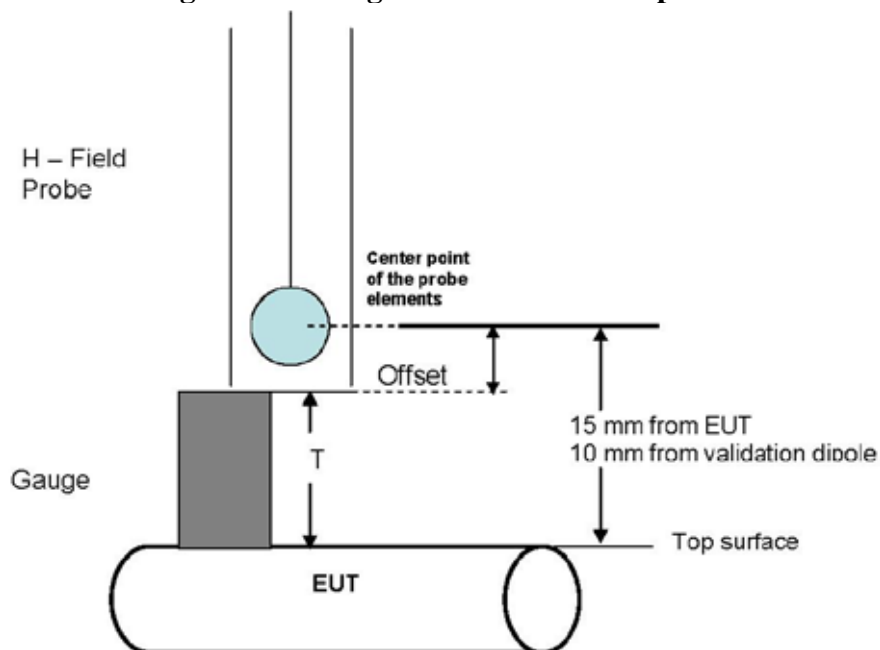


Figure 9.3: Gauge block with H-field probe



## **10. RF Emissions Test Procedure**

The following illustrate a typical RF emissions test scan over a wireless communications device:

1. Proper operation of the field probe, probe measurement system, other instrumentation, and the positioning system was confirmed.
2. DUT is positioned in its intended test position, acoustic output point of the device perpendicular to the field probe.
3. The DUT operation for maximum rated RF output power was configured and confirmed with the base station simulator, at the test channel and other normal operating parameters as intended for the test. The battery was ensured to be fully charged before each test.
4. The center sub-grid was centered over the center of the acoustic output (also audio band magnetic output, if applicable). The DUT audio output was positioned tangent (as physically possible) to the measurement plane.
5. A surface calibration was performed before each setup change to ensure repeatable spacing and proper maintenance of the measurement plane using the test Arch.
6. The measurement system measured the field strength at the reference location.
7. Measurements at 5 mm increments in the 5 x 5 cm region were performed and recorded. A 360° rotation about the azimuth axis at the maximum interpolated position was measured. For the worst-case condition, the peak reading from this rotation was used in re-evaluating the HAC category.
8. The system performed a drift evaluation by measuring the field at the reference location.
9. Steps 1-8 were done for both the E and H-Field measurements.



## 11. HAC Test Results

### 11.1 Conducted Power

Band	RC	SO	Type	Data Rate	Conducted Power (dBm)		
					Low Ch	Mid Ch	High Ch
Cellular	1	55	Loop	1/8	24.41	24.66	24.33
PCS	1	55	Loop	1/8	24.21	24.64	23.74

### 11.2 E-Field Emission

Band	Mode	Chan.	Freq. (MHz)	Modulation Type	Battery	PMF	Peak Field (V/m)	M-Rating
CDMA2000 Cellular	RC1+SO55	1013	824.70	QPSK	1	0.968	107.5	M4
	RC1+SO55	384	836.52	QPSK	1	0.968	108.2	M4
	RC1+SO55	777	848.31	QPSK	1	0.968	88.5	M4
	RC1+SO55	384	836.52	QPSK	2	0.968	108.1	M4
	<b>RC1+SO55</b>	<b>384</b>	<b>836.52</b>	<b>QPSK</b>	<b>3</b>	<b>0.968</b>	<b>108.4</b>	<b>M4</b>
CDMA2000 PCS	RC1+SO55	25	1851.25	QPSK	1	0.984	90.5	M3
	RC1+SO55	600	1880.00	QPSK	1	0.984	89.7	M3
	RC1+SO55	1175	1908.75	QPSK	1	0.984	75.7	M3
	RC1+SO55	25	1851.25	QPSK	2	0.984	92.0	M3
	<b>RC1+SO55</b>	<b>25</b>	<b>1851.25</b>	<b>QPSK</b>	<b>3</b>	<b>0.984</b>	<b>92.2</b>	<b>M3</b>

### 11.3 H-Field Emission

Band	Mode	Chan.	Freq. (MHz)	Modulation Type	Battery	PMF	Peak Field (V/m)	M-Rating
CDMA2000 Cellular	RC1+SO55	1013	824.70	QPSK	1	0.925	0.198	M4
	RC1+SO55	384	836.52	QPSK	1	0.925	0.258	M4
	RC1+SO55	777	848.31	QPSK	1	0.925	0.202	M4
	<b>RC1+SO55</b>	<b>384</b>	<b>836.52</b>	<b>QPSK</b>	<b>2</b>	<b>0.925</b>	<b>0.262</b>	<b>M4</b>
	RC1+SO55	384	836.52	QPSK	3	0.925	0.260	M4
CDMA2000 PCS	RC1+SO55	25	1851.25	QPSK	1	0.808	0.296	M3
	<b>RC1+SO55</b>	<b>600</b>	<b>1880.00</b>	<b>QPSK</b>	<b>1</b>	<b>0.808</b>	<b>0.301</b>	<b>M3</b>
	RC1+SO55	1175	1908.75	QPSK	1	0.808	0.272	M3
	RC1+SO55	600	1880.00	QPSK	2	0.808	0.294	M3
	RC1+SO55	600	1880.00	QPSK	3	0.808	0.293	M3

**Remark :**

1. This device does not support HAC and V.O.I.P. function. It means that the functions of WLAN and Bluetooth do not have voice capability in the held to ear mode.
2. The device was chosen to be tested in the worst case peak E-Field condition under RC1/SO55.
3. The output power is adjusted to maximum level during RF Emission test.
4. Test Engineer : Eric Huang



## **12. References**

- [1] ANSI C63.19-2007, "American National Standard for Methods of Measurement of Compatibility between Wireless Communications Devices and Hearing Aids"
- [2] DASY4 System Hand book.



### Appendix A - System Performance Check Data

Test Laboratory: Sporton International Inc. SAR/HAC Testing Lab

Date: 2009/2/18

HAC\_E\_Dipole\_835\_090218

DUT: HAC-Dipole 835 MHz

Communication System: CW; Frequency: 835 MHz; Duty Cycle: 1:1  
Medium: Air Medium parameters used:  $\sigma = 0$  mho/m,  $\epsilon_r = 1$ ;  $\rho = 1000$  kg/m<sup>3</sup>  
Ambient Temperature : 22.5 °C

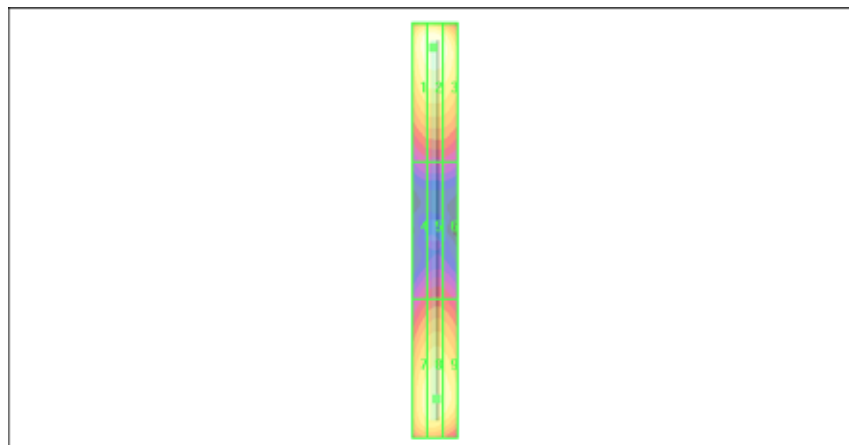
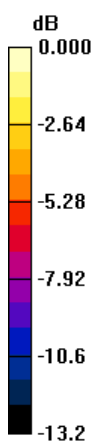
DASY4 Configuration:

- Probe: ER3DV6 - SN2358; ConvF(1, 1, 1); Calibrated: 2009/1/14
- Sensor-Surface: (Fix Surface)
- Electronics: DAE4 Sn778; Calibrated: 2008/9/22
- Phantom: HAC Test Arch 4.6; Type: SD HAC P01 BA;
- Measurement SW: DASY4, V4.7 Build 71; Postprocessing SW: SEMCAD, V1.8 Build 184

**E Scan - ER probe center 10mm above CD835 Dipole/Hearing Aid Compatibility Test (41x361x1):** Measurement grid:  
 dx=5mm, dy=5mm  
 Probe Modulation Factor = 1.00  
 Device Reference Point: 0.000, 0.000, 353.7 mm  
 Reference Value = 59.7 V/m; Power Drift = -0.010 dB  
**Average value of Total = (184.3 + 167.2) / 2 = 175.75 V/m**

Peak E-field in V/m

Grid 1 <b>180.0 M4</b>	Grid 2 <b>184.3 M4</b>	Grid 3 <b>175.7 M4</b>
Grid 4 <b>88.3 M4</b>	Grid 5 <b>94.3 M4</b>	Grid 6 <b>92.4 M4</b>
Grid 7 <b>160.8 M4</b>	Grid 8 <b>167.2 M4</b>	Grid 9 <b>163.5 M4</b>



0 dB = 184.3V/m



Test Laboratory: Sporton International Inc. SAR/HAC Testing Lab

Date: 2009/2/18

HAC\_E\_Dipole\_1880\_090218

DUT: HAC Dipole 1880 MHz

Communication System: CW; Frequency: 1880 MHz; Duty Cycle: 1:1
Medium: Air Medium parameters used: sigma = 0 mho/m, epsilon\_r = 1; rho = 1000 kg/m^3
Ambient Temperature : 22.4 °C

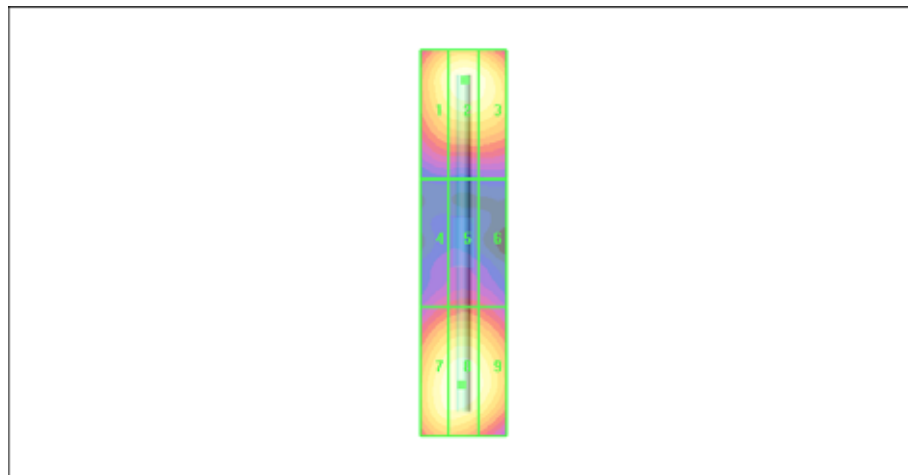
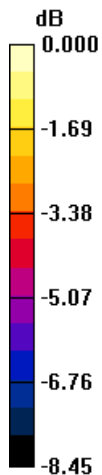
DASY4 Configuration:

- Probe: ER3DV6 - SN2358; ConvF(1, 1, 1); Calibrated: 2009/1/14
- Sensor-Surface: (Fix Surface)
- Electronics: DAE4 Sn778; Calibrated: 2008/9/22
- Phantom: HAC Test Arch 4.6; Type: SD HAC P01 BA;
- Measurement SW: DASY4, V4.7 Build 71; Postprocessing SW: SEMCAD, V1.8 Build 184

E Scan - ER probe center 10mm above CD1880 Dipole/Hearing Aid Compatibility Test (41x181x1): Measurement
grid: dx=5mm, dy=5mm
Probe Modulation Factor = 1.00
Device Reference Point: 0.000, 0.000, 353.7 mm
Reference Value = 71.7 V/m; Power Drift = 0.004 dB
Average value of Total = (148.3 + 148.7) / 2 = 148.5 V/m

Peak E-field in V/m

Table with 3 columns (Grid 1-3, Grid 4-6, Grid 7-9) and 3 rows showing peak E-field values in M2 and M3.



0 dB = 148.7V/m





Test Laboratory: Sporton International Inc. SAR/HAC Testing Lab

Date: 2009/2/19

HAC\_H\_Dipole\_835\_090219

DUT: HAC-Dipole 835 MHz

Communication System: CW; Frequency: 835 MHz; Duty Cycle: 1:1
Medium: Air Medium parameters used: sigma = 0 mho/m, epsilon\_r = 1; rho = 1 kg/m^3
Ambient Temperature : 22.5 °C

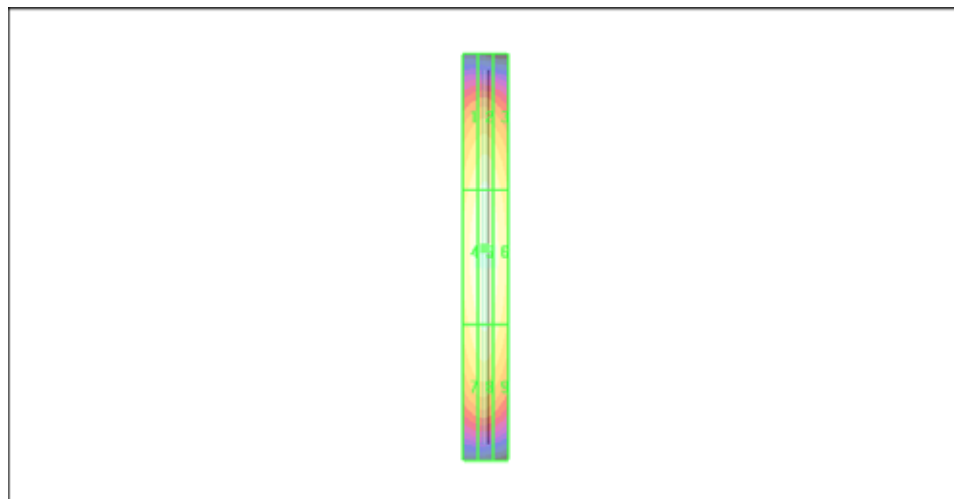
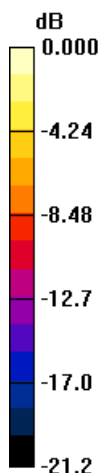
DASY4 Configuration:

- Probe: H3DV6 - SN6184; ; Calibrated: 2009/1/19
- Sensor-Surface: (Fix Surface)
- Electronics: DAE4 Sn778; Calibrated: 2008/9/22
- Phantom: HAC Test Arch 4.6; Type: SD HAC P01 BA;
- Measurement SW: DASY4, V4.7 Build 71; Postprocessing SW: SEMCAD, V1.8 Build 184

H Scan - H3DV6 probe center 10mm above CD835 Dipole/Hearing Aid Compatibility Test (41x361x1): Measurement
grid: dx=5mm, dy=5mm
Probe Modulation Factor = 1.00
Device Reference Point: 0.000, 0.000, 353.7 mm
Reference Value = 0.446 A/m; Power Drift = -0.002 dB
Maximum value of Total = 0.459 A/m

Peak H-field in A/m

Table with 3 columns (Grid 1-3, Grid 4-6, Grid 7-9) and 3 rows of peak H-field values in A/m, with Grid 5 highlighted as the maximum value of 0.459 M4.



0 dB = 0.459A/m



Test Laboratory: Sporton International Inc. SAR/HAC Testing Lab

Date: 2009/2/19

HAC\_H\_Dipole\_1880\_090219

DUT: HAC Dipole 1880 MHz

Communication System: CW; Frequency: 1880 MHz; Duty Cycle: 1:1
Medium: Air Medium parameters used: sigma = 0 mho/m, epsilon\_r = 1; rho = 1 kg/m^3
Ambient Temperature : 22.6 C

DASY4 Configuration:

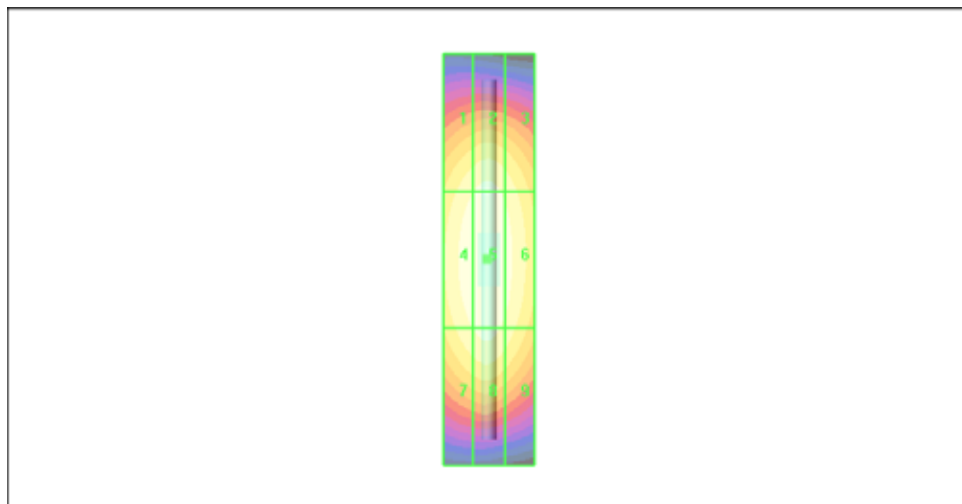
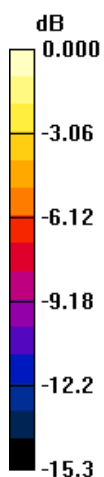
- Probe: H3DV6 - SN6184; ; Calibrated: 2009/1/19
- Sensor-Surface: (Fix Surface)
- Electronics: DAE4 Sn778; Calibrated: 2008/9/22
- Phantom: HAC Test Arch 4.6; Type: SD HAC P01 BA;
- Measurement SW: DASY4, V4.7 Build 71; Postprocessing SW: SEMCAD, V1.8 Build 184

H Scan - HSDV6 probe center 10mm above CD1880 Dipole/Hearing Aid Compatibility Test (41x181x1):

Measurement grid: dx=5mm, dy=5mm
Probe Modulation Factor = 1.00
Device Reference Point: 0.000, 0.000, 353.7 mm
Reference Value = 0.483 A/m; Power Drift = -0.018 dB
Maximum value of Total = 0.494 A/m

Peak H-field in A/m

Table with 3 columns (Grid 1-3, Grid 4-6, Grid 7-9) and 3 rows of peak H-field values in A/m, with Grid 5 highlighted as 0.494 M2.



0 dB = 0.494A/m



Appendix B - HAC Measurement Data

Test Laboratory: Sporton International Inc. SAR/HAC Testing Lab

Date: 2009/2/18

HAC\_E\_CDMA850 Ch1013\_RC1 SO55\_Loop Eighth\_Battery 1

DUT: 920507-01

Communication System: CDMA ; Frequency: 824.7 MHz;Duty Cycle: 1:1
Medium: Air Medium parameters used: sigma = 0 mho/m, epsilon\_r = 1; rho = 1000 kg/m^3
Ambient Temperature : 22.6 C

DASY4 Configuration:

- Probe: ER3DV6 - SN2358; ConvF(1, 1, 1); Calibrated: 2009/1/14
- Sensor-Surface: (Fix Surface)
- Electronics: DAE4 Sn778; Calibrated: 2008/9/22
- Phantom: HAC Test Arch 4.6; Type: SD HAC P01 BA;
- Measurement SW: DASY4, V4.7 Build 71; Postprocessing SW: SEMCAD, V1.8 Build 184

Ch1013/Hearing Aid Compatibility Test (101x101x1): Measurement grid: dx=5mm, dy=5mm

Maximum value of peak Total field = 107.5 V/m

Probe Modulation Factor = 2.94

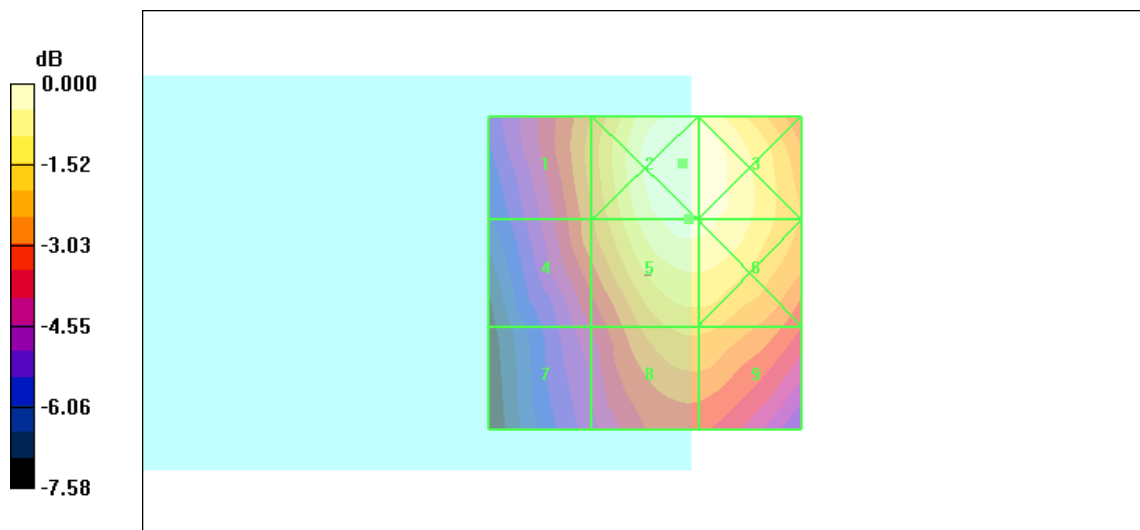
Device Reference Point: 0.000, 0.000, 353.7 mm

Reference Value = 42.4 V/m; Power Drift = 0.128 dB

Hearing Aid Near-Field Category: M4 (AWF 0 dB)

Peak E-field in V/m

Table with 3 columns (Grid 1-3, Grid 4-6, Grid 7-9) and 3 rows of peak E-field values in M4.



0 dB = 111.8V/m



Test Laboratory: Sporton International Inc. SAR/HAC Testing Lab

Date: 2009/2/18

HAC\_E\_CDMA850 Ch384\_RC1 SO55\_Loop Eighth\_Battery 1

DUT: 920507-01

Communication System: CDMA ; Frequency: 836.52 MHz;Duty Cycle: 1:1
Medium: Air Medium parameters used: sigma = 0 mho/m, epsilon\_r = 1; rho = 1000 kg/m^3
Ambient Temperature : 22.7 °C

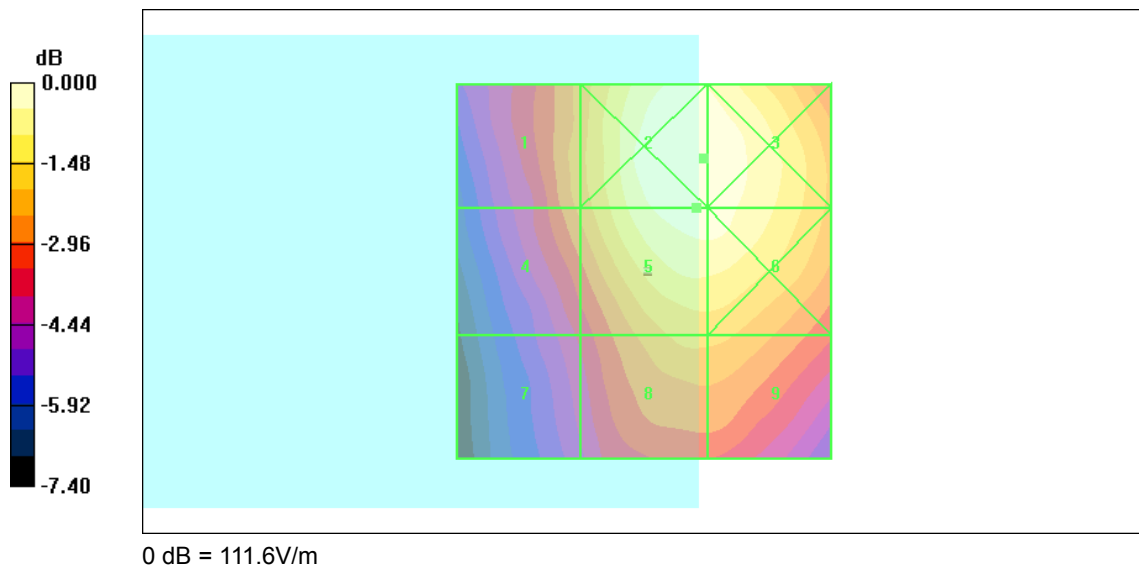
DASY4 Configuration:

- Probe: ER3DV6 - SN2358; ConvF(1, 1, 1); Calibrated: 2009/1/14
- Sensor-Surface: (Fix Surface)
- Electronics: DAE4 Sn778; Calibrated: 2008/9/22
- Phantom: HAC Test Arch 4.6; Type: SD HAC P01 BA;
- Measurement SW: DASY4, V4.7 Build 71; Postprocessing SW: SEMCAD, V1.8 Build 184

Ch384/Hearing Aid Compatibility Test (101x101x1): Measurement grid: dx=5mm, dy=5mm
Maximum value of peak Total field = 108.2 V/m
Probe Modulation Factor = 2.94
Device Reference Point: 0.000, 0.000, 353.7 mm
Reference Value = 43.2 V/m; Power Drift = -0.035 dB
Hearing Aid Near-Field Category: M4 (AWF 0 dB)

Peak E-field in V/m

Table with 3 columns (Grid 1-3, Grid 4-6, Grid 7-9) and 3 rows of peak E-field values in M4.





Test Laboratory: Sporton International Inc. SAR/HAC Testing Lab

Date: 2009/2/18

HAC\_E\_CDMA850 Ch777\_RC1 SO55\_Loop Eighth\_Battery 1

DUT: 920507-01

Communication System: CDMA ; Frequency: 848.31 MHz;Duty Cycle: 1:1
Medium: Air Medium parameters used: sigma = 0 mho/m, epsilon\_r = 1; rho = 1000 kg/m^3
Ambient Temperature : 22.6 °C

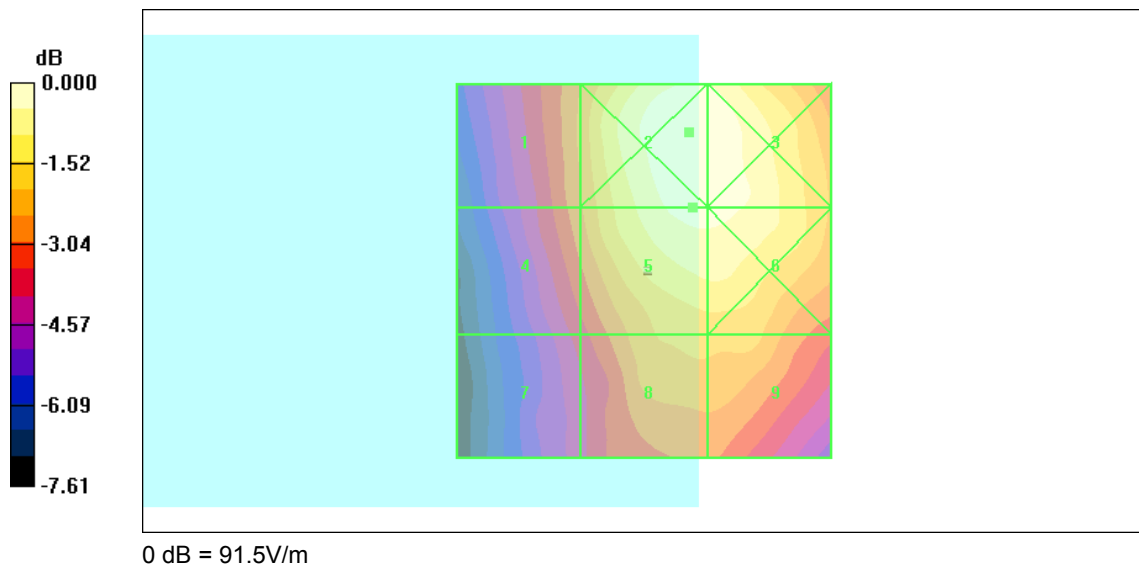
DASY4 Configuration:

- Probe: ER3DV6 - SN2358; ConvF(1, 1, 1); Calibrated: 2009/1/14
- Sensor-Surface: (Fix Surface)
- Electronics: DAE4 Sn778; Calibrated: 2008/9/22
- Phantom: HAC Test Arch 4.6; Type: SD HAC P01 BA;
- Measurement SW: DASY4, V4.7 Build 71; Postprocessing SW: SEMCAD, V1.8 Build 184

Ch777/Hearing Aid Compatibility Test (101x101x1): Measurement grid: dx=5mm, dy=5mm
Maximum value of peak Total field = 88.5 V/m
Probe Modulation Factor = 2.94
Device Reference Point: 0.000, 0.000, 353.7 mm
Reference Value = 35.4 V/m; Power Drift = -0.016 dB
Hearing Aid Near-Field Category: M4 (AWF 0 dB)

Peak E-field in V/m

Table with 3 columns (Grid 1-3, Grid 4-6, Grid 7-9) and 3 rows of peak E-field values in M4.





Test Laboratory: Sporton International Inc. SAR/HAC Testing Lab

Date: 2009/2/18

HAC\_E\_CDMA850 Ch384\_RC1 SO55\_Loop Eighth\_Battery 2

DUT: 920507-01

Communication System: CDMA ; Frequency: 836.52 MHz;Duty Cycle: 1:1
Medium: Air Medium parameters used: sigma = 0 mho/m, epsilon\_r = 1; rho = 1000 kg/m^3
Ambient Temperature : 22.7 °C

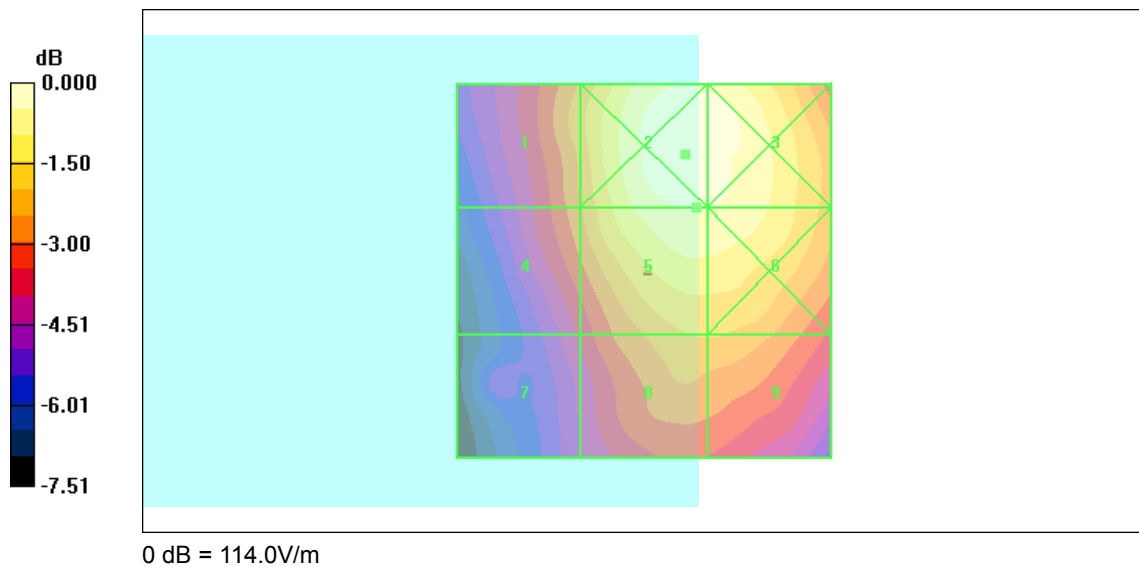
DASY4 Configuration:

- Probe: ER3DV6 - SN2358; ConvF(1, 1, 1); Calibrated: 2009/1/14
- Sensor-Surface: (Fix Surface)
- Electronics: DAE4 Sn778; Calibrated: 2008/9/22
- Phantom: HAC Test Arch 4.6; Type: SD HAC P01 BA;
- Measurement SW: DASY4, V4.7 Build 71; Postprocessing SW: SEMCAD, V1.8 Build 184

Ch384/Hearing Aid Compatibility Test (101x101x1): Measurement grid: dx=5mm, dy=5mm
Maximum value of peak Total field = 108.1 V/m
Probe Modulation Factor = 2.94
Device Reference Point: 0.000, 0.000, 353.7 mm
Reference Value = 44.2 V/m; Power Drift = 0.008 dB
Hearing Aid Near-Field Category: M4 (AWF 0 dB)

Peak E-field in V/m

Table with 3 columns (Grid 1-3, Grid 4-6, Grid 7-9) and 3 rows showing peak E-field values in V/m (e.g., 89.2 M4, 114.0 M4, 112.2 M4).





Test Laboratory: Sporton International Inc. SAR/HAC Testing Lab

Date: 2009/2/18

HAC\_E\_CDMA850 Ch384\_RC1 SO55\_Loop Eighth\_Battery 3

DUT: 920507-01

Communication System: CDMA ; Frequency: 836.52 MHz;Duty Cycle: 1:1
Medium: Air Medium parameters used: sigma = 0 mho/m, epsilon\_r = 1; rho = 1000 kg/m^3
Ambient Temperature : 22.7 °C

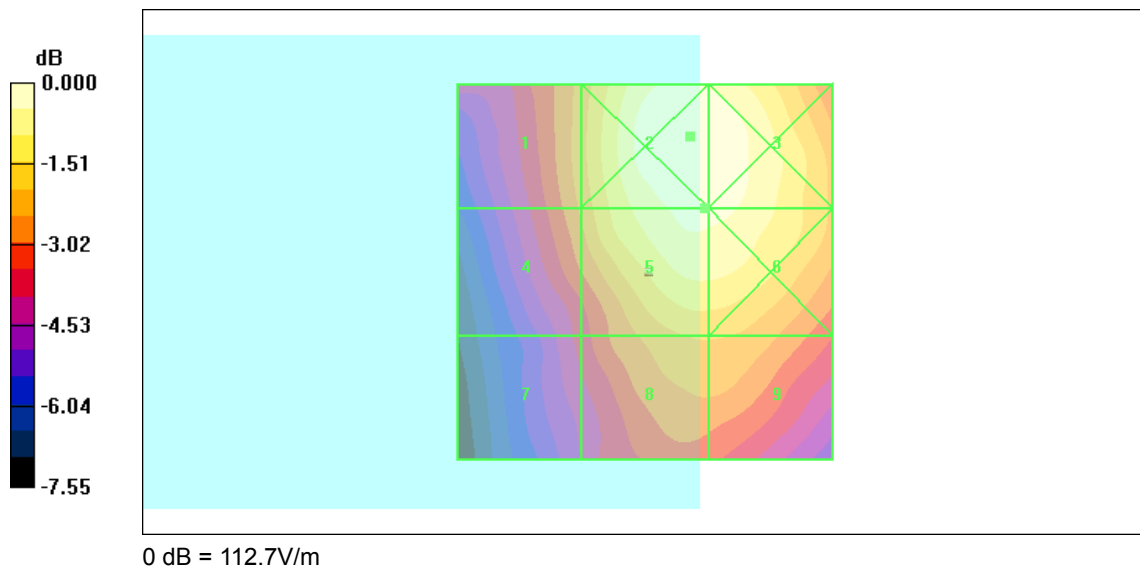
DASY4 Configuration:

- Probe: ER3DV6 - SN2358; ConvF(1, 1, 1); Calibrated: 2009/1/14
- Sensor-Surface: (Fix Surface)
- Electronics: DAE4 Sn778; Calibrated: 2008/9/22
- Phantom: HAC Test Arch 4.6; Type: SD HAC P01 BA;
- Measurement SW: DASY4, V4.7 Build 71; Postprocessing SW: SEMCAD, V1.8 Build 184

Ch384/Hearing Aid Compatibility Test (101x101x1): Measurement grid: dx=5mm, dy=5mm
Maximum value of peak Total field = 108.4 V/m
Probe Modulation Factor = 2.94
Device Reference Point: 0.000, 0.000, 353.7 mm
Reference Value = 44.3 V/m; Power Drift = -0.083 dB
Hearing Aid Near-Field Category: M4 (AWF 0 dB)

Peak E-field in V/m

Table with 3 columns (Grid 1-3, Grid 4-6, Grid 7-9) and 3 rows of peak E-field values in M4.





Test Laboratory: Sporton International Inc. SAR/HAC Testing Lab

Date: 2009/2/18

HAC\_E\_CDMA1900 Ch25\_RC1 SO55\_Loop Eighth\_Battery 1

DUT: 920507-01

Communication System: CDMA ; Frequency: 1851.25 MHz;Duty Cycle: 1:1
Medium: Air Medium parameters used: sigma = 0 mho/m, epsilon\_r = 1; rho = 1000 kg/m^3
Ambient Temperature : 22.6 °C

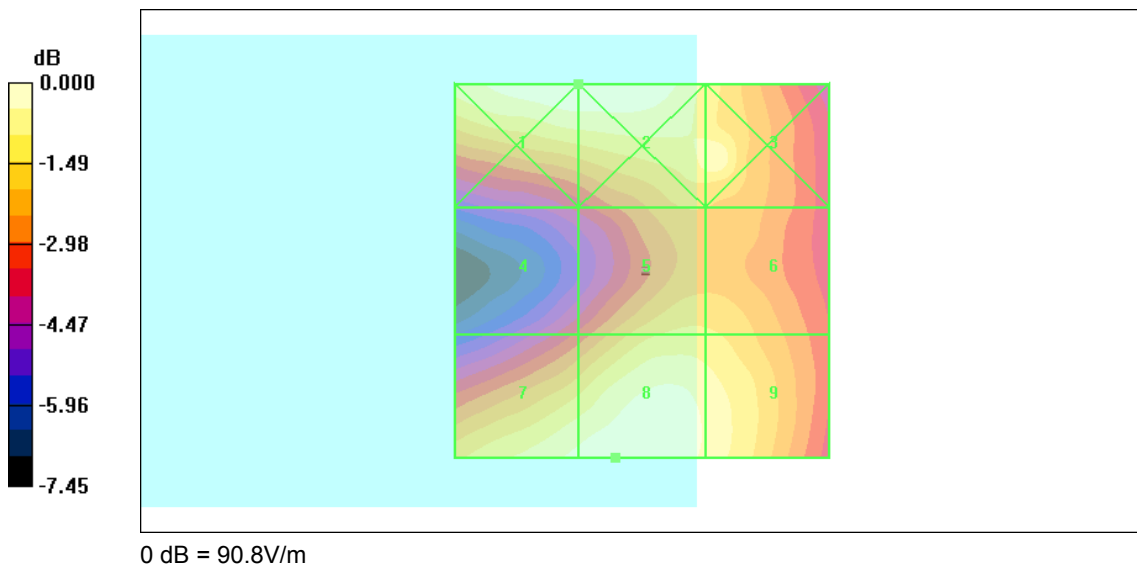
DASY4 Configuration:

- Probe: ER3DV6 - SN2358; ConvF(1, 1, 1); Calibrated: 2009/1/14
- Sensor-Surface: (Fix Surface)
- Electronics: DAE4 Sn778; Calibrated: 2008/9/22
- Phantom: HAC Test Arch 4.6; Type: SD HAC P01 BA;
- Measurement SW: DASY4, V4.7 Build 71; Postprocessing SW: SEMCAD, V1.8 Build 184

Ch25/Hearing Aid Compatibility Test (101x101x1): Measurement grid: dx=5mm, dy=5mm
Maximum value of peak Total field = 90.5 V/m
Probe Modulation Factor = 3.18
Device Reference Point: 0.000, 0.000, 353.7 mm
Reference Value = 23.8 V/m; Power Drift = 0.097 dB
Hearing Aid Near-Field Category: M3 (AWF 0 dB)

Peak E-field in V/m

Table with 3 columns (Grid 1-3, Grid 4-6, Grid 7-9) and 3 rows of peak E-field values in V/m.







Test Laboratory: Sporton International Inc. SAR/HAC Testing Lab

Date: 2009/2/18

HAC\_E\_CDMA1900 Ch600\_RC1 SO55\_Loop Eighth\_Battery 1

DUT: 920507-01

Communication System: CDMA ; Frequency: 1880 MHz;Duty Cycle: 1:1
Medium: Air Medium parameters used: sigma = 0 mho/m, epsilon\_r = 1; rho = 1000 kg/m^3
Ambient Temperature : 22.6 °C

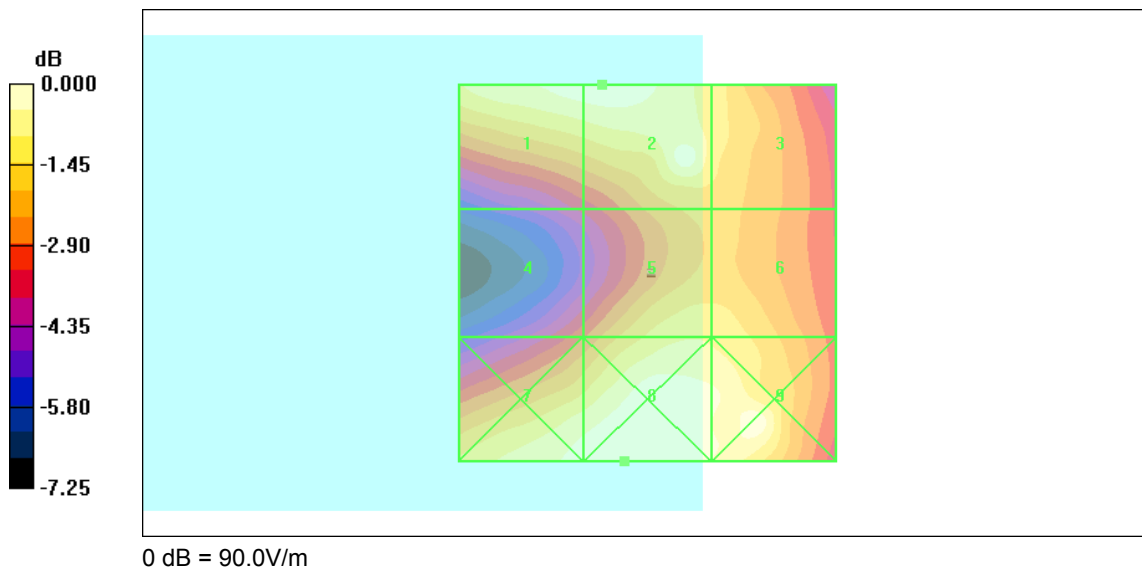
DASY4 Configuration:

- Probe: ER3DV6 - SN2358; ConvF(1, 1, 1); Calibrated: 2009/1/14
- Sensor-Surface: (Fix Surface)
- Electronics: DAE4 Sn778; Calibrated: 2008/9/22
- Phantom: HAC Test Arch 4.6; Type: SD HAC P01 BA;
- Measurement SW: DASY4, V4.7 Build 71; Postprocessing SW: SEMCAD, V1.8 Build 184

Ch600/Hearing Aid Compatibility Test (101x101x1): Measurement grid: dx=5mm, dy=5mm
Maximum value of peak Total field = 89.7 V/m
Probe Modulation Factor = 3.18
Device Reference Point: 0.000, 0.000, 353.7 mm
Reference Value = 24.6 V/m; Power Drift = -0.102 dB
Hearing Aid Near-Field Category: M3 (AWF 0 dB)

Peak E-field in V/m

Table with 3 columns (Grid 1-3, Grid 4-6, Grid 7-9) and 3 rows of peak E-field values in M3.





Test Laboratory: Sporton International Inc. SAR/HAC Testing Lab

Date: 2009/2/18

HAC\_E\_CDMA1900 Ch1175\_RC1 SO55\_Loop Eighth\_Battery 1

DUT: 920507-01

Communication System: CDMA ; Frequency: 1908.75 MHz;Duty Cycle: 1:1
Medium: Air Medium parameters used: sigma = 0 mho/m, epsilon\_r = 1; rho = 1000 kg/m^3
Ambient Temperature : 22.7 °C

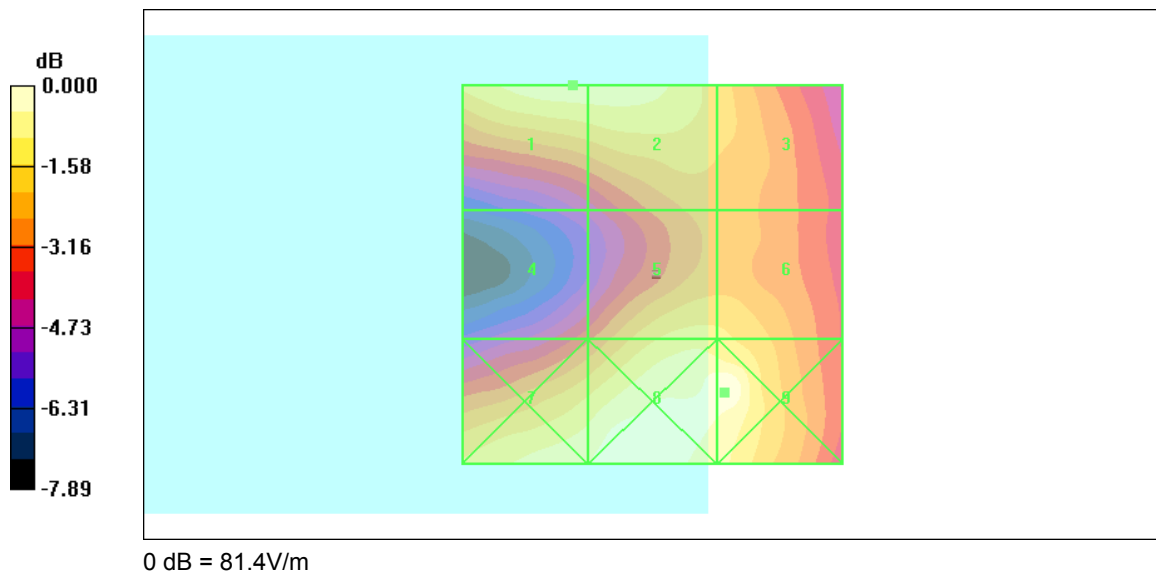
DASY4 Configuration:

- Probe: ER3DV6 - SN2358; ConvF(1, 1, 1); Calibrated: 2009/1/14
- Sensor-Surface: (Fix Surface)
- Electronics: DAE4 Sn778; Calibrated: 2008/9/22
- Phantom: HAC Test Arch 4.6; Type: SD HAC P01 BA;
- Measurement SW: DASY4, V4.7 Build 71; Postprocessing SW: SEMCAD, V1.8 Build 184

Ch1175/Hearing Aid Compatibility Test (101x101x1): Measurement grid: dx=5mm, dy=5mm
Maximum value of peak Total field = 75.7 V/m
Probe Modulation Factor = 3.18
Device Reference Point: 0.000, 0.000, 353.7 mm
Reference Value = 20.6 V/m; Power Drift = 0.066 dB
Hearing Aid Near-Field Category: M3 (AWF 0 dB)

Peak E-field in V/m

Table with 3 columns (Grid 1-3, Grid 4-6, Grid 7-9) and 3 rows of peak E-field values in V/m.





Test Laboratory: Sporton International Inc. SAR/HAC Testing Lab

Date: 2009/2/18

HAC\_E\_CDMA1900 Ch25\_RC1 SO55\_Loop Eighth\_Battery 2

DUT: 920507-01

Communication System: CDMA ; Frequency: 1851.25 MHz;Duty Cycle: 1:1
Medium: Air Medium parameters used: sigma = 0 mho/m, epsilon\_r = 1; rho = 1000 kg/m^3
Ambient Temperature : 22.6 °C

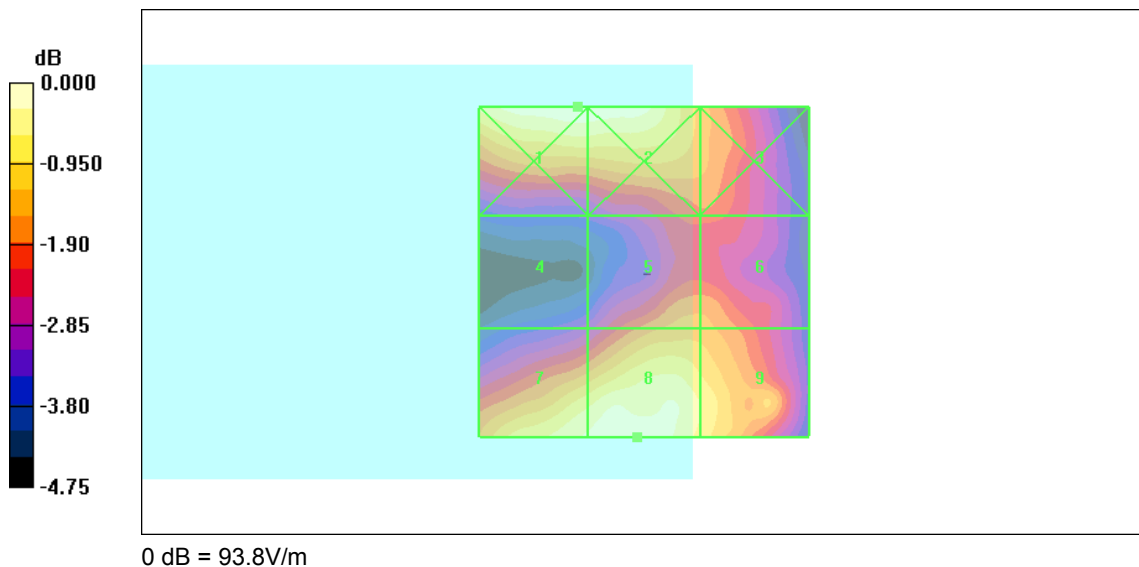
DASY4 Configuration:

- Probe: ER3DV6 - SN2358; ConvF(1, 1, 1); Calibrated: 2009/1/14
- Sensor-Surface: (Fix Surface)
- Electronics: DAE4 Sn778; Calibrated: 2008/9/22
- Phantom: HAC Test Arch 4.6; Type: SD HAC P01 BA;
- Measurement SW: DASY4, V4.7 Build 71; Postprocessing SW: SEMCAD, V1.8 Build 184

Ch25/Hearing Aid Compatibility Test (101x101x1): Measurement grid: dx=5mm, dy=5mm
Maximum value of peak Total field = 92.0 V/m
Probe Modulation Factor = 3.18
Device Reference Point: 0.000, 0.000, 353.7 mm
Reference Value = 25.2 V/m; Power Drift = -0.129 dB
Hearing Aid Near-Field Category: M3 (AWF 0 dB)

Peak E-field in V/m

Table with 3 columns (Grid 1-3, Grid 4-6, Grid 7-9) and 3 rows of peak E-field values in M3.





Test Laboratory: Sporton International Inc. SAR/HAC Testing Lab

Date: 2009/2/18

HAC\_E\_CDMA1900 Ch25\_RC1 SO55\_Loop Eighth\_Battery 3

DUT: 920507-01

Communication System: CDMA ; Frequency: 1851.25 MHz;Duty Cycle: 1:1
Medium: Air Medium parameters used: sigma = 0 mho/m, epsilon\_r = 1; rho = 1000 kg/m^3
Ambient Temperature : 22.6 C

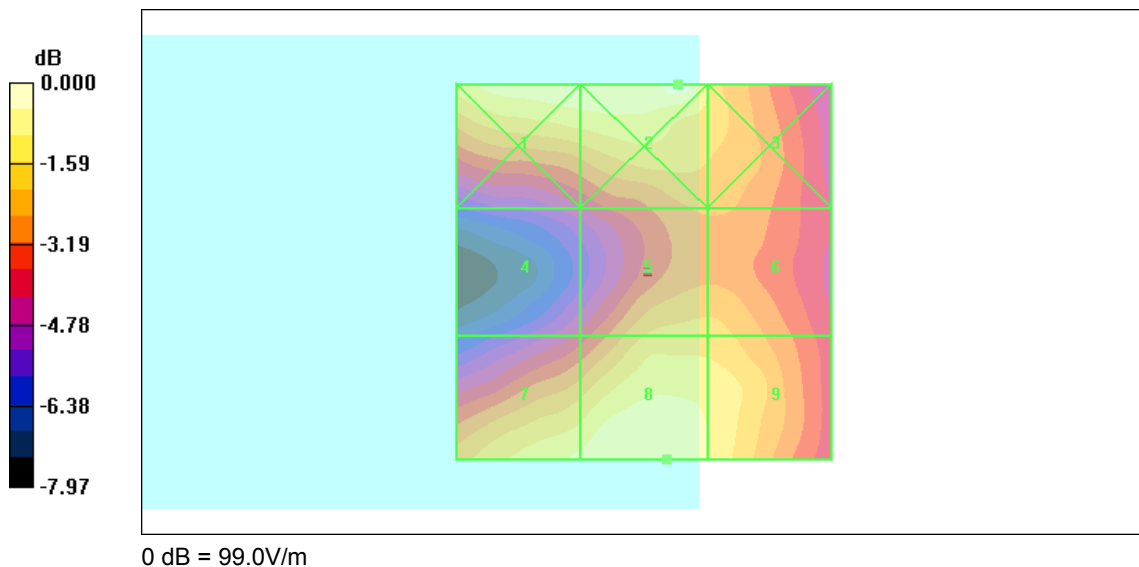
DASY4 Configuration:

- Probe: ER3DV6 - SN2358; ConvF(1, 1, 1); Calibrated: 2009/1/14
- Sensor-Surface: (Fix Surface)
- Electronics: DAE4 Sn778; Calibrated: 2008/9/22
- Phantom: HAC Test Arch 4.6; Type: SD HAC P01 BA;
- Measurement SW: DASY4, V4.7 Build 71; Postprocessing SW: SEMCAD, V1.8 Build 184

Ch25/Hearing Aid Compatibility Test (101x101x1): Measurement grid: dx=5mm, dy=5mm
Maximum value of peak Total field = 92.2 V/m
Probe Modulation Factor = 3.18
Device Reference Point: 0.000, 0.000, 353.7 mm
Reference Value = 24.5 V/m; Power Drift = -0.122 dB
Hearing Aid Near-Field Category: M3 (AWF 0 dB)

Peak E-field in V/m

Table with 3 columns (Grid 1-3, Grid 4-6, Grid 7-9) and 3 rows of peak E-field values in V/m.





Test Laboratory: Sporton International Inc. SAR/HAC Testing Lab

Date: 2009/2/19

HAC\_H\_CDMA850 Ch1013\_RC1 SO55\_Loop Eighth\_Battery 1

DUT: 920507-01

Communication System: CDMA ; Frequency: 824.7 MHz;Duty Cycle: 1:1
Medium: Air Medium parameters used: sigma = 0 mho/m, epsilon\_r = 1; rho = 1 kg/m^3
Ambient Temperature : 22.5 °C

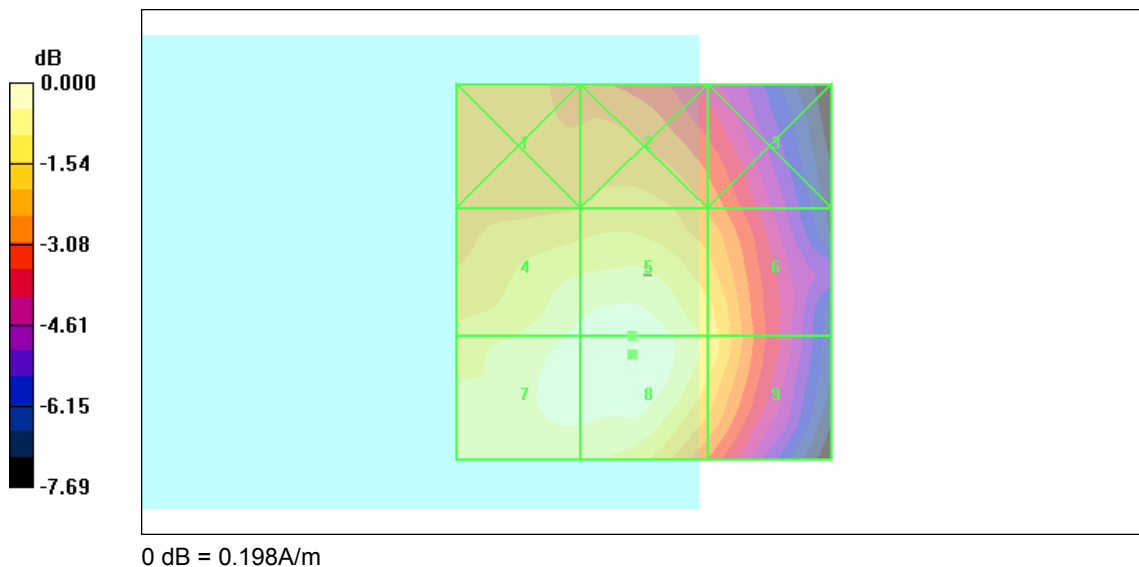
DASY4 Configuration:

- Probe: H3DV6 - SN6184; ; Calibrated: 2009/1/19
- Sensor-Surface: (Fix Surface)
- Electronics: DAE4 Sn778; Calibrated: 2008/9/22
- Phantom: HAC Test Arch 4.6; Type: SD HAC P01 BA;
- Measurement SW: DASY4, V4.7 Build 71; Postprocessing SW: SEMCAD, V1.8 Build 184

Ch1013/Hearing Aid Compatibility Test (101x101x1): Measurement grid: dx=5mm, dy=5mm
Maximum value of peak Total field = 0.198 A/m
Probe Modulation Factor = 2.71
Device Reference Point: 0.000, 0.000, 353.7 mm
Reference Value = 0.085 A/m; Power Drift = -0.155 dB
Hearing Aid Near-Field Category: M4 (AWF 0 dB)

Peak H-field in A/m

Table with 3 columns (Grid 1-3, Grid 4-6, Grid 7-9) and 3 rows of peak H-field values in A/m, such as 0.157 M4, 0.161 M4, 0.146 M4, etc.





Test Laboratory: Sporton International Inc. SAR/HAC Testing Lab

Date: 2009/2/19

HAC\_H\_CDMA850 Ch384\_RC1 SO55\_Loop Eighth\_Battery 1

DUT: 920507-01

Communication System: CDMA ; Frequency: 836.52 MHz;Duty Cycle: 1:1
Medium: Air Medium parameters used: sigma = 0 mho/m, epsilon\_r = 1; rho = 1 kg/m^3
Ambient Temperature : 22.6 °C

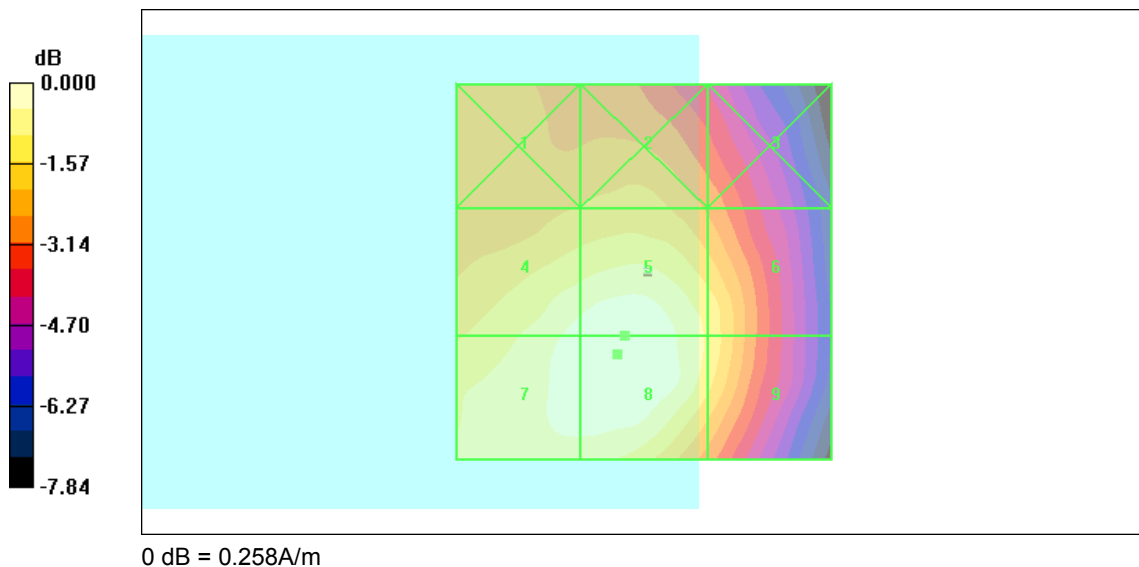
DASY4 Configuration:

- Probe: H3DV6 - SN6184; ; Calibrated: 2009/1/19
- Sensor-Surface: (Fix Surface)
- Electronics: DAE4 Sn778; Calibrated: 2008/9/22
- Phantom: HAC Test Arch 4.6; Type: SD HAC P01 BA;
- Measurement SW: DASY4, V4.7 Build 71; Postprocessing SW: SEMCAD, V1.8 Build 184

Ch384/Hearing Aid Compatibility Test (101x101x1): Measurement grid: dx=5mm, dy=5mm
Maximum value of peak Total field = 0.258 A/m
Probe Modulation Factor = 2.71
Device Reference Point: 0.000, 0.000, 353.7 mm
Reference Value = 0.111 A/m; Power Drift = -0.060 dB
Hearing Aid Near-Field Category: M4 (AWF 0 dB)

Peak H-field in A/m

Table with 3 columns (Grid 1-3, Grid 4-6, Grid 7-9) and 3 rows of peak H-field values in A/m, such as 0.204 M4, 0.209 M4, 0.189 M4, etc.





Test Laboratory: Sporton International Inc. SAR/HAC Testing Lab

Date: 2009/2/19

HAC\_H\_CDMA850 Ch777\_RC1 SO55\_Loop Eighth\_Battery 1

DUT: 920507-01

Communication System: CDMA ; Frequency: 848.31 MHz;Duty Cycle: 1:1
Medium: Air Medium parameters used: sigma = 0 mho/m, epsilon\_r = 1; rho = 1 kg/m^3
Ambient Temperature : 22.5 °C

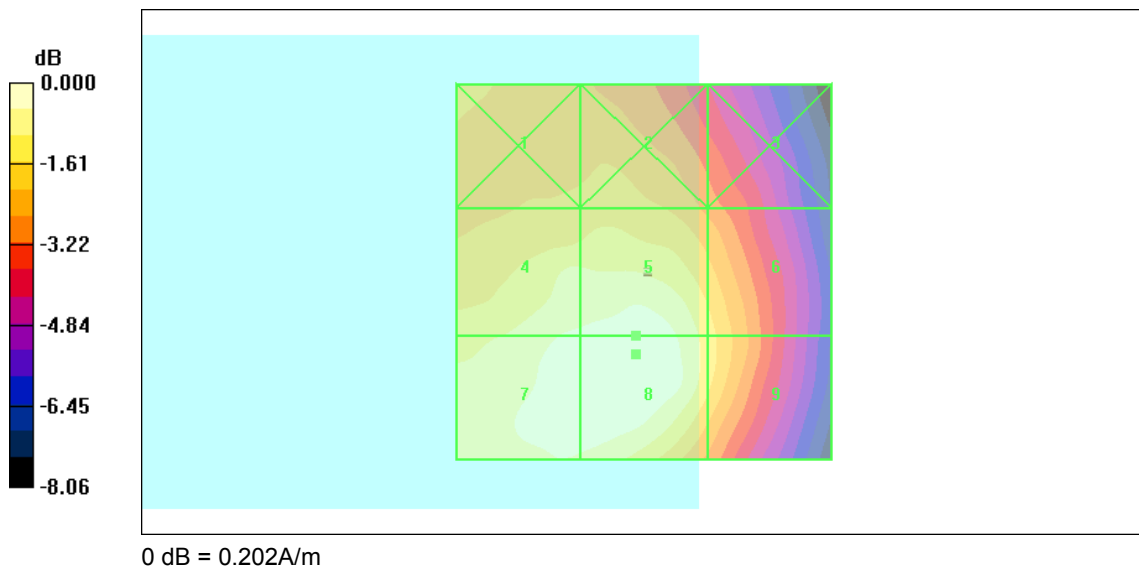
DASY4 Configuration:

- Probe: H3DV6 - SN6184; ; Calibrated: 2009/1/19
- Sensor-Surface: (Fix Surface)
- Electronics: DAE4 Sn778; Calibrated: 2008/9/22
- Phantom: HAC Test Arch 4.6; Type: SD HAC P01 BA;
- Measurement SW: DASY4, V4.7 Build 71; Postprocessing SW: SEMCAD, V1.8 Build 184

Ch777/Hearing Aid Compatibility Test (101x101x1): Measurement grid: dx=5mm, dy=5mm
Maximum value of peak Total field = 0.202 A/m
Probe Modulation Factor = 2.71
Device Reference Point: 0.000, 0.000, 353.7 mm
Reference Value = 0.085 A/m; Power Drift = 0.008 dB
Hearing Aid Near-Field Category: M4 (AWF 0 dB)

Peak H-field in A/m

Table with 3 columns (Grid 1-3, Grid 4-6, Grid 7-9) and 3 rows of peak H-field values in A/m, such as 0.162 M4, 0.165 M4, 0.146 M4, etc.





Test Laboratory: Sporton International Inc. SAR/HAC Testing Lab

Date: 2009/2/19

HAC\_H\_CDMA850 Ch384\_RC1 SO55\_Loop Eighth\_Battery 2

DUT: 920507-01

Communication System: CDMA ; Frequency: 836.52 MHz;Duty Cycle: 1:1
Medium: Air Medium parameters used: sigma = 0 mho/m, epsilon\_r = 1; rho = 1 kg/m^3
Ambient Temperature : 22.6 C

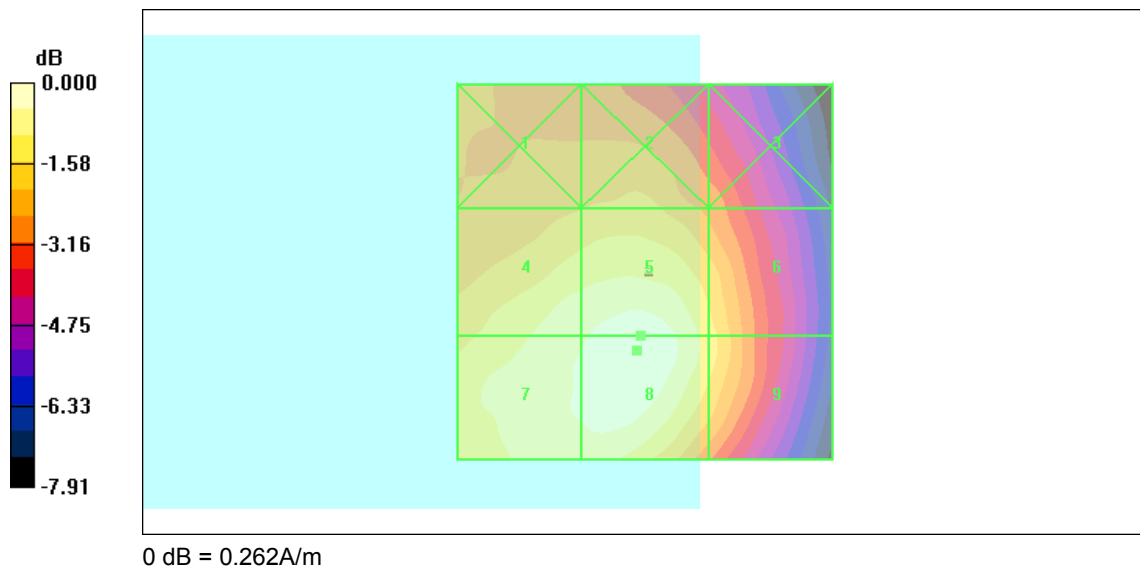
DASY4 Configuration:

- Probe: H3DV6 - SN6184; ; Calibrated: 2009/1/19
- Sensor-Surface: (Fix Surface)
- Electronics: DAE4 Sn778; Calibrated: 2008/9/22
- Phantom: HAC Test Arch 4.6; Type: SD HAC P01 BA;
- Measurement SW: DASY4, V4.7 Build 71; Postprocessing SW: SEMCAD, V1.8 Build 184

Ch384/Hearing Aid Compatibility Test (101x101x1): Measurement grid: dx=5mm, dy=5mm
Maximum value of peak Total field = 0.262 A/m
Probe Modulation Factor = 2.71
Device Reference Point: 0.000, 0.000, 353.7 mm
Reference Value = 0.110 A/m; Power Drift = 0.040 dB
Hearing Aid Near-Field Category: M4 (AWF 0 dB)

Peak H-field in A/m

Table with 3 columns (Grid 1-3, Grid 4-6, Grid 7-9) and 3 rows of peak H-field values in A/m, such as 0.205 M4, 0.210 M4, 0.191 M4, etc.







Test Laboratory: Sporton International Inc. SAR/HAC Testing Lab

Date: 2009/2/19

HAC\_H\_CDMA850 Ch384\_RC1 SO55\_Loop Eighth\_Battery 3

DUT: 920507-01

Communication System: CDMA ; Frequency: 836.52 MHz;Duty Cycle: 1:1
Medium: Air Medium parameters used: sigma = 0 mho/m, epsilon\_r = 1; rho = 1 kg/m^3
Ambient Temperature : 22.6 C

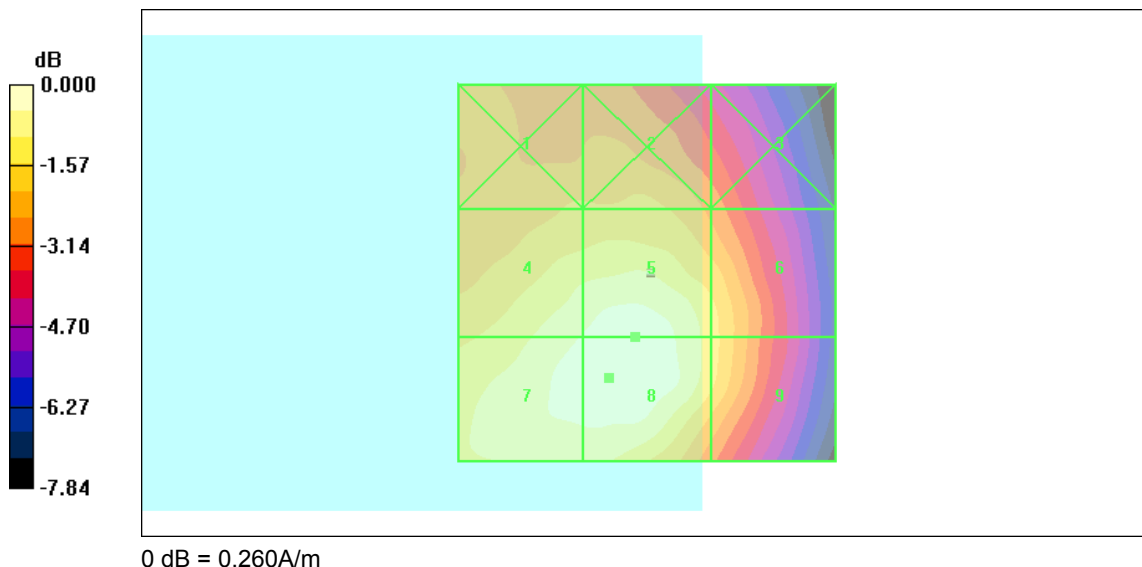
DASY4 Configuration:

- Probe: H3DV6 - SN6184; ; Calibrated: 2009/1/19
- Sensor-Surface: (Fix Surface)
- Electronics: DAE4 Sn778; Calibrated: 2008/9/22
- Phantom: HAC Test Arch 4.6; Type: SD HAC P01 BA;
- Measurement SW: DASY4, V4.7 Build 71; Postprocessing SW: SEMCAD, V1.8 Build 184

Ch384/Hearing Aid Compatibility Test (101x101x1): Measurement grid: dx=5mm, dy=5mm
Maximum value of peak Total field = 0.260 A/m
Probe Modulation Factor = 2.71
Device Reference Point: 0.000, 0.000, 353.7 mm
Reference Value = 0.110 A/m; Power Drift = 0.024 dB
Hearing Aid Near-Field Category: M4 (AWF 0 dB)

Peak H-field in A/m

Table with 3 columns (Grid 1-3, Grid 4-6, Grid 7-9) and 3 rows of peak H-field values in A/m, such as 0.206 M4, 0.208 M4, 0.189 M4, etc.



0 dB = 0.260A/m



Test Laboratory: Sporton International Inc. SAR/HAC Testing Lab

Date: 2009/2/19

HAC\_H\_CDMA1900 Ch25\_RC1 SO55\_Loop Eighth\_Battery 1

DUT: 920507-01

Communication System: CDMA ; Frequency: 1851.25 MHz;Duty Cycle: 1:1
Medium: Air Medium parameters used: sigma = 0 mho/m, epsilon\_r = 1; rho = 1 kg/m^3
Ambient Temperature : 22.6 C

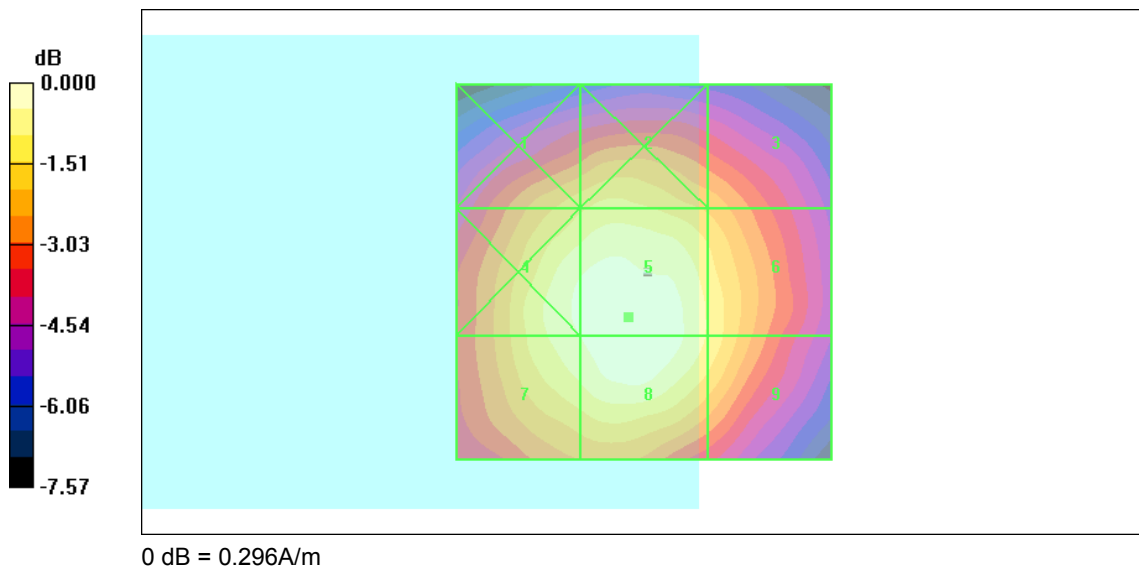
DASY4 Configuration:

- Probe: H3DV6 - SN6184; ; Calibrated: 2009/1/19
- Sensor-Surface: (Fix Surface)
- Electronics: DAE4 Sn778; Calibrated: 2008/9/22
- Phantom: HAC Test Arch 4.6; Type: SD HAC P01 BA;
- Measurement SW: DASY4, V4.7 Build 71; Postprocessing SW: SEMCAD, V1.8 Build 184

Ch25/Hearing Aid Compatibility Test (101x101x1): Measurement grid: dx=5mm, dy=5mm
Maximum value of peak Total field = 0.296 A/m
Probe Modulation Factor = 2.67
Device Reference Point: 0.000, 0.000, 353.7 mm
Reference Value = 0.135 A/m; Power Drift = 0.070 dB
Hearing Aid Near-Field Category: M3 (AWF 0 dB)

Peak H-field in A/m

Table with 3 columns (Grid 1-3, Grid 4-6, Grid 7-9) and 3 rows of peak H-field values in A/m, all categorized as M3.





Test Laboratory: Sporton International Inc. SAR/HAC Testing Lab

Date: 2009/2/19

HAC\_H\_CDMA1900 Ch600\_RC1 SO55\_Loop Eighth\_Battery 1

DUT: 920507-01

Communication System: CDMA ; Frequency: 1880 MHz;Duty Cycle: 1:1
Medium: Air Medium parameters used: sigma = 0 mho/m, epsilon\_r = 1; rho = 1 kg/m^3
Ambient Temperature : 22.5 C

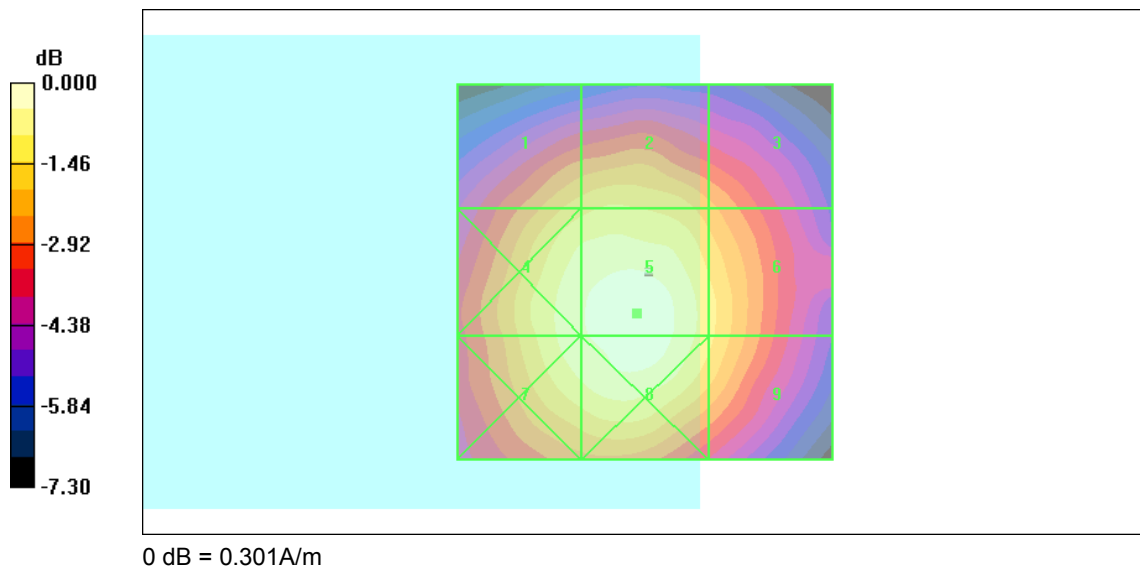
DASY4 Configuration:

- Probe: H3DV6 - SN6184; ; Calibrated: 2009/1/19
- Sensor-Surface: (Fix Surface)
- Electronics: DAE4 Sn778; Calibrated: 2008/9/22
- Phantom: HAC Test Arch 4.6; Type: SD HAC P01 BA;
- Measurement SW: DASY4, V4.7 Build 71; Postprocessing SW: SEMCAD, V1.8 Build 184

Ch600/Hearing Aid Compatibility Test (101x101x1): Measurement grid: dx=5mm, dy=5mm
Maximum value of peak Total field = 0.301 A/m
Probe Modulation Factor = 2.67
Device Reference Point: 0.000, 0.000, 353.7 mm
Reference Value = 0.138 A/m; Power Drift = -0.122 dB
Hearing Aid Near-Field Category: M3 (AWF 0 dB)

Peak H-field in A/m

Table with 3 columns (Grid 1-3, Grid 4-6, Grid 7-9) and 3 rows of peak H-field values in A/m, such as 0.249 M3, 0.257 M3, 0.232 M3, etc.





Test Laboratory: Sporton International Inc. SAR/HAC Testing Lab

Date: 2009/2/19

HAC\_H\_CDMA1900 Ch1175\_RC1 SO55\_Loop Eighth\_Battery 1

DUT: 920507-01

Communication System: CDMA ; Frequency: 1908.75 MHz;Duty Cycle: 1:1
Medium: Air Medium parameters used: sigma = 0 mho/m, epsilon\_r = 1; rho = 1 kg/m^3
Ambient Temperature : 22.4 °C

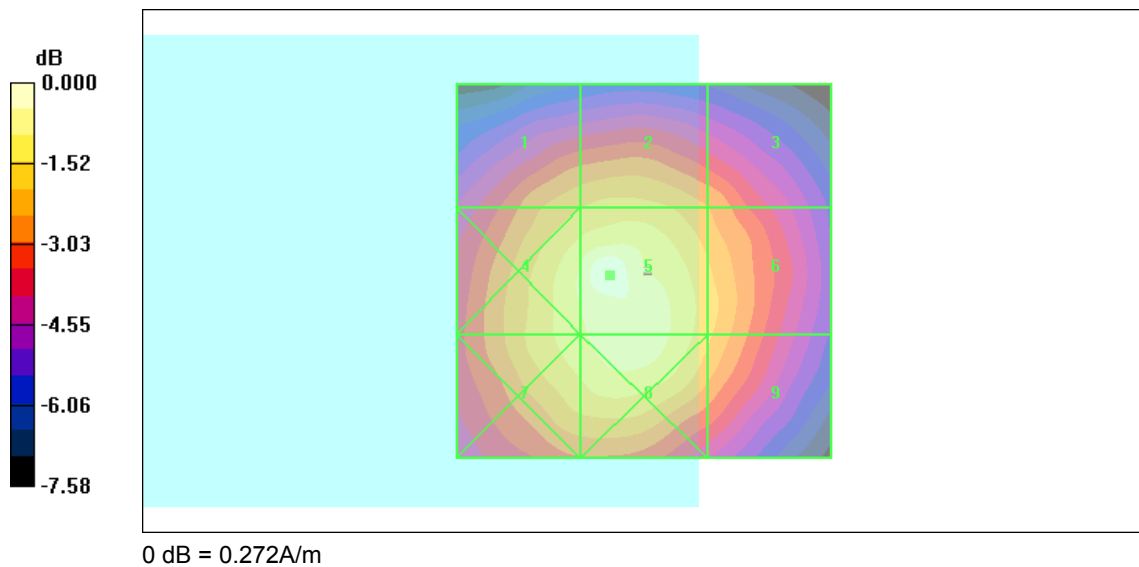
DASY4 Configuration:

- Probe: H3DV6 - SN6184; ; Calibrated: 2009/1/19
- Sensor-Surface: (Fix Surface)
- Electronics: DAE4 Sn778; Calibrated: 2008/9/22
- Phantom: HAC Test Arch 4.6; Type: SD HAC P01 BA;
- Measurement SW: DASY4, V4.7 Build 71; Postprocessing SW: SEMCAD, V1.8 Build 184

Ch1175/Hearing Aid Compatibility Test (101x101x1): Measurement grid: dx=5mm, dy=5mm
Maximum value of peak Total field = 0.272 A/m
Probe Modulation Factor = 2.67
Device Reference Point: 0.000, 0.000, 353.7 mm
Reference Value = 0.117 A/m; Power Drift = 0.053 dB
Hearing Aid Near-Field Category: M3 (AWF 0 dB)

Peak H-field in A/m

Table with 3 columns (Grid 1-3, Grid 4-6, Grid 7-9) and 3 rows of peak H-field values in A/m, such as 0.216 M3, 0.221 M3, 0.204 M3, etc.





Test Laboratory: Sporton International Inc. SAR/HAC Testing Lab

Date: 2009/2/19

HAC\_H\_CDMA1900 Ch600\_RC1 SO55\_Loop Eighth\_Battery 2

DUT: 920507-01

Communication System: CDMA ; Frequency: 1880 MHz;Duty Cycle: 1:1
Medium: Air Medium parameters used: sigma = 0 mho/m, epsilon\_r = 1; rho = 1 kg/m^3
Ambient Temperature : 22.6 °C

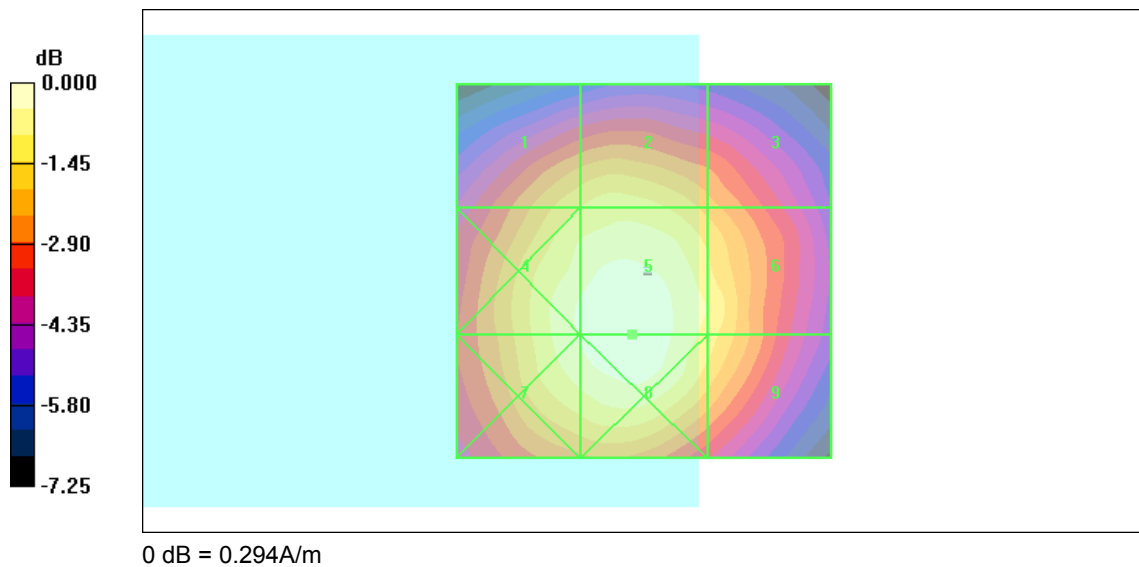
DASY4 Configuration:

- Probe: H3DV6 - SN6184; ; Calibrated: 2009/1/19
- Sensor-Surface: (Fix Surface)
- Electronics: DAE4 Sn778; Calibrated: 2008/9/22
- Phantom: HAC Test Arch 4.6; Type: SD HAC P01 BA;
- Measurement SW: DASY4, V4.7 Build 71; Postprocessing SW: SEMCAD, V1.8 Build 184

Ch600/Hearing Aid Compatibility Test (101x101x1): Measurement grid: dx=5mm, dy=5mm
Maximum value of peak Total field = 0.294 A/m
Probe Modulation Factor = 2.67
Device Reference Point: 0.000, 0.000, 353.7 mm
Reference Value = 0.136 A/m; Power Drift = -0.003 dB
Hearing Aid Near-Field Category: M3 (AWF 0 dB)

Peak H-field in A/m

Table with 3 columns (Grid 1-3, Grid 4-6, Grid 7-9) and 3 rows of peak H-field values in A/m, such as 0.249 M3, 0.258 M3, 0.230 M3, etc.





Test Laboratory: Sporton International Inc. SAR/HAC Testing Lab

Date: 2009/2/19

HAC\_H\_CDMA1900 Ch600\_RC1 SO55\_Loop Eighth\_Battery 3

DUT: 920507-01

Communication System: CDMA ; Frequency: 1880 MHz;Duty Cycle: 1:1
Medium: Air Medium parameters used: sigma = 0 mho/m, epsilon\_r = 1; rho = 1 kg/m^3
Ambient Temperature : 22.5 °C

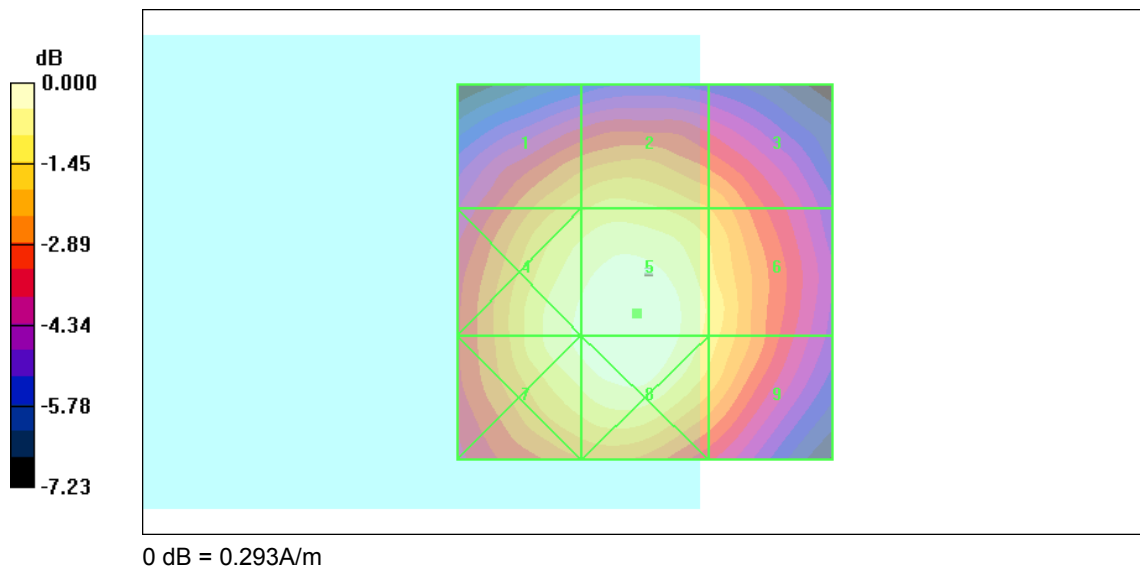
DASY4 Configuration:

- Probe: H3DV6 - SN6184; ; Calibrated: 2009/1/19
- Sensor-Surface: (Fix Surface)
- Electronics: DAE4 Sn778; Calibrated: 2008/9/22
- Phantom: HAC Test Arch 4.6; Type: SD HAC P01 BA;
- Measurement SW: DASY4, V4.7 Build 71; Postprocessing SW: SEMCAD, V1.8 Build 184

Ch600/Hearing Aid Compatibility Test (101x101x1): Measurement grid: dx=5mm, dy=5mm
Maximum value of peak Total field = 0.293 A/m
Probe Modulation Factor = 2.67
Device Reference Point: 0.000, 0.000, 353.7 mm
Reference Value = 0.137 A/m; Power Drift = -0.028 dB
Hearing Aid Near-Field Category: M3 (AWF 0 dB)

Peak H-field in A/m

Table with 3 columns (Grid 1-3, Grid 4-6, Grid 7-9) and 3 rows of peak H-field values in A/m, such as 0.245 M3, 0.255 M3, 0.235 M3, etc.



0 dB = 0.293A/m



## ***Appendix C – Calibration Data***

Please refer to the calibration certificates of DASY as below.