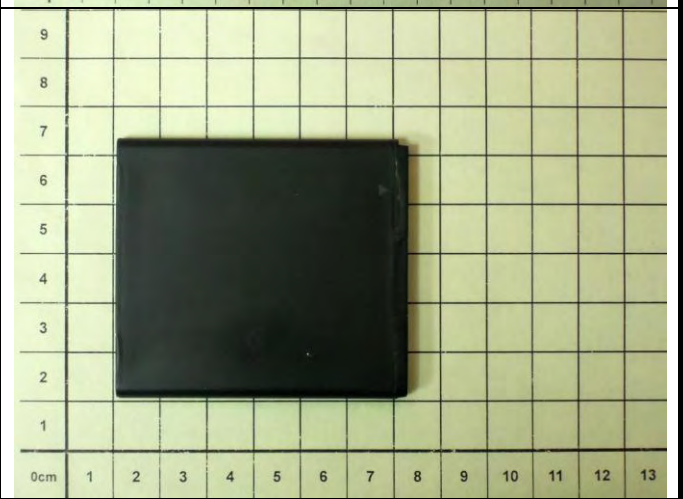




Appendix D. Photographs of EUT and Setup

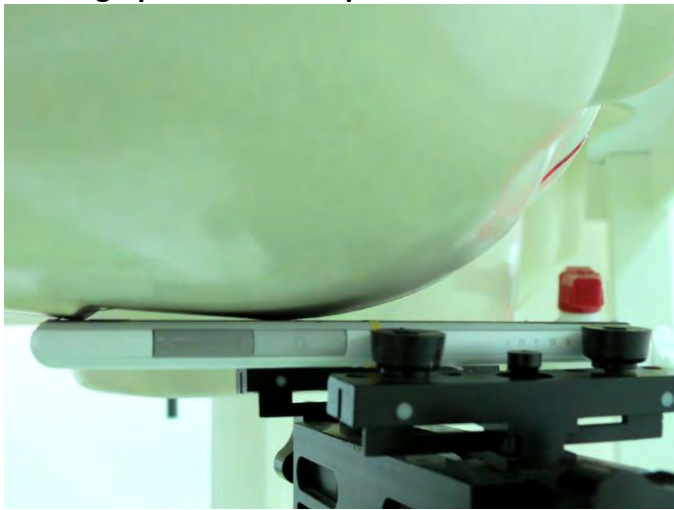
FCC SAR Test Report

<Photographs of EUT>

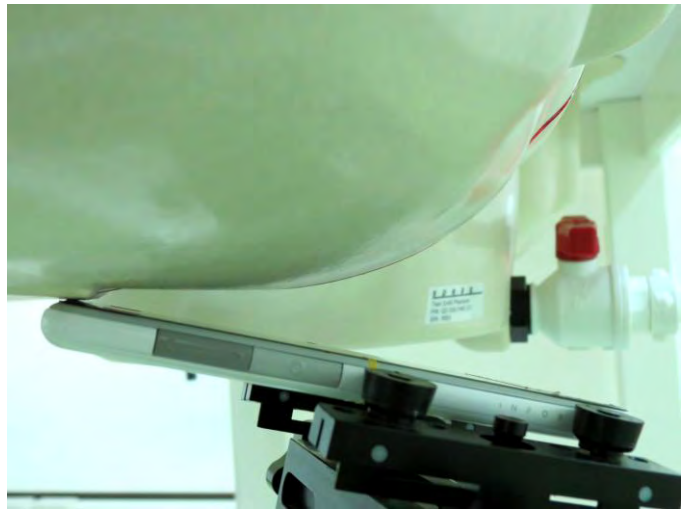


FCC SAR Test Report

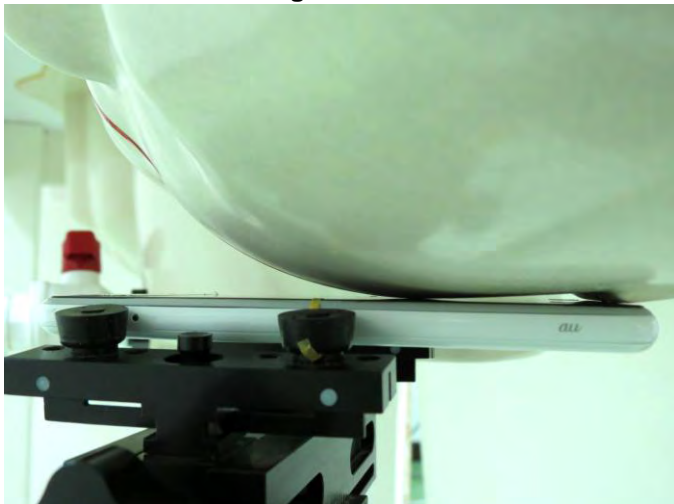
<Photographs of SAR Setup>



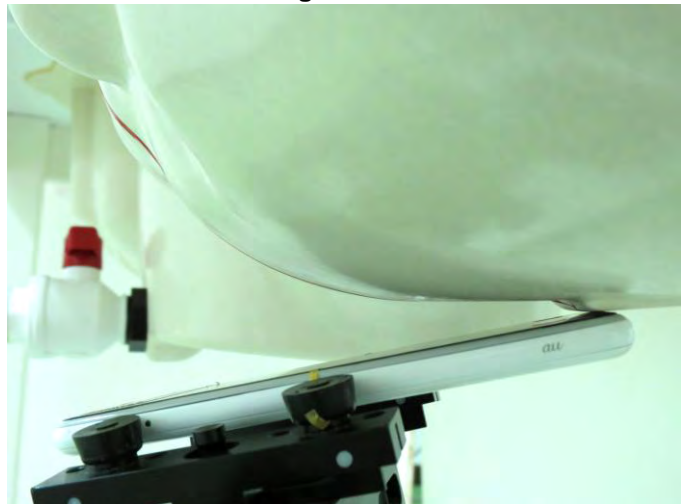
Right Cheek



Right Tilted



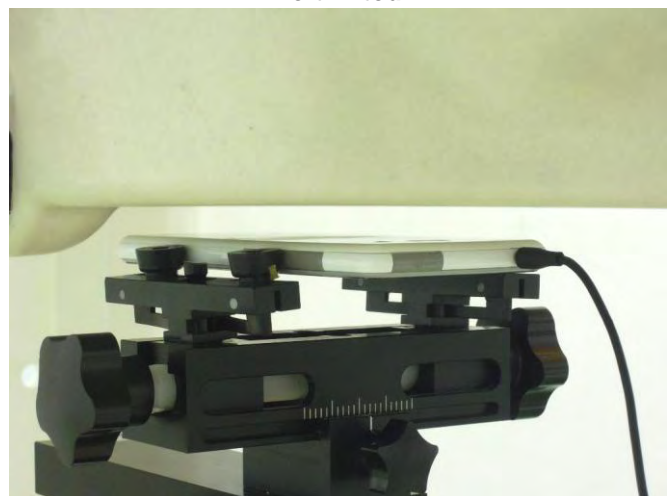
Left Cheek



Left Tilted

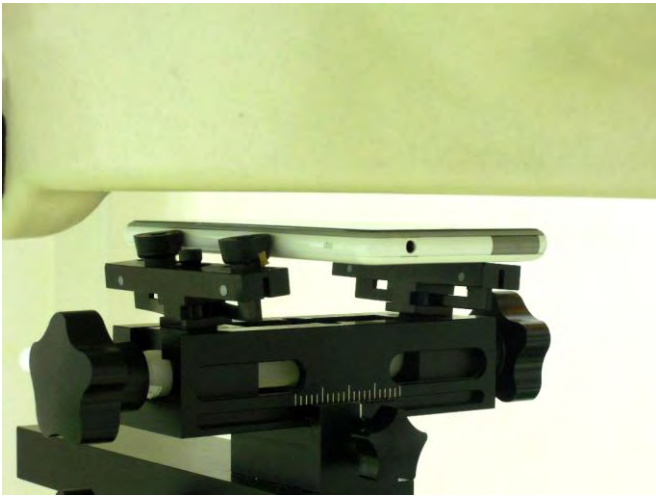


**Front Face of EUT with 1 cm Gap
(Body-worn Mode)**

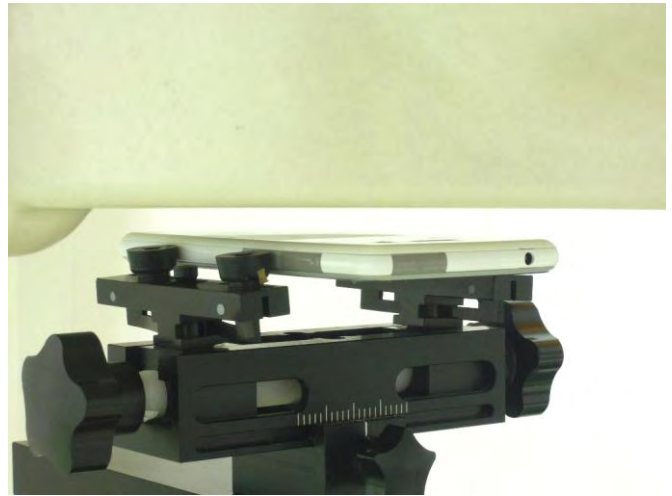


**Rear Face of EUT with 1 cm Gap
(Body-worn Mode)**

FCC SAR Test Report



**Front Face of EUT with 1 cm Gap
(Hotspot Mode)**



**Rear Face of DUT with 1 cm Gap
(Hotspot Mode)**



**Left Side with 1 cm Gap
(Hotspot Mode)**



**Right Side with 1 cm Gap
(Hotspot Mode)**



**Bottom Side with 1 cm Gap
(Hotspot Mode)**