

CAR A200 **HTC StereoClip (AUX)**

User Guide

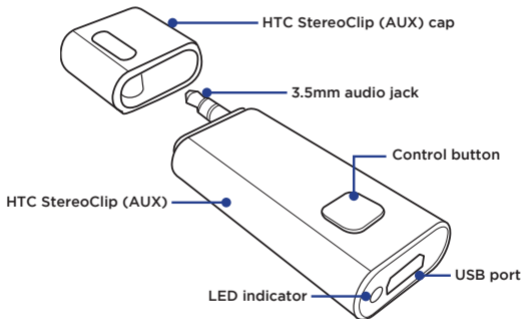
<http://www.htc.com/www/support/warranty.html>

htc
quietly brilliant

Overview

Thank you for purchasing the **HTC StereoClip (AUX)**. The **HTC StereoClip (AUX)** is an accessory that Bluetooth enables your car audio system or home stereo system. This User Guide will get you started and ready to make the most of your **HTC StereoClip (AUX)**.

About your HTC StereoClip (AUX)



The **Control** button on **HTC StereoClip (AUX)** performs different functions depending on how long you press it.

- *Press*: Less than 4 seconds
- *Press and hold*: more than 4 seconds

Features

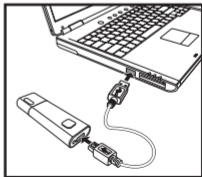
- Bluetooth 2.1 + EDR (Minimum)
- Supports Advanced Audio Distribution Profile (A2DP)
- Supports CSR aptX™ codec
- Stereo output to 3.5mm audio jack
- Bluetooth Simple Secure Pairing
- Auto-pairing with selected HTC phones or tablets
- Automatic power off to conserve battery power
- Battery capacity: 100mAh
 - Play time: up to 4 hrs
 - Standby: 120 hrs

Getting Started

Charging your HTC StereoClip (AUX)

Before using **HTC StereoClip (AUX)** for the first time, you need to charge it using the micro-USB cable. Normal charge takes approximately 2 hours.

1. Connect one end of the USB cable to the USB port of **HTC StereoClip (AUX)**.
2. Connect the other end of the USB cable to a computer or a power adaptor.



Note:

*When the battery needs charging, the **Red LED** blinks slowly. If you do not charge **HTC StereoClip (AUX)**, it turns itself off before battery depletes.*

Turning the HTC StereoClip (AUX) on and off

- To turn on **HTC StereoClip (AUX)**, press the **Control** button. The **Green LED** lights for 1 second and then goes off.
- To turn off **HTC StereoClip (AUX)**, press and hold the **Control** button. The **Red LED** lights for 1 second and then goes off.

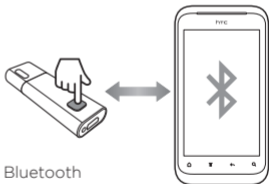
Pairing with mobile devices

HTC StereoClip (AUX) needs to be paired with your phone or tablet before it can be used. When the devices are successfully paired and active, the **Green LED** blinks 3 times in succession every 5 seconds.

Note:

HTC StereoClip (AUX) also supports "auto-pairing" with selected HTC phones which support HTC Car.

1. Turn on the Bluetooth feature on your mobile device.
2. Press and hold the **Control** button to turn **HTC StereoClip (AUX)** on. The **Green LED** blinks quickly, indicating **HTC StereoClip (AUX)** is in pairing mode.
3. Set your mobile device to search for Bluetooth devices, and select "**HTC Car A200**" from the search results.



Note:

HTC StereoClip (AUX) can store pairing information of up to eight devices.

Clearing the pairing settings

Press and hold the Control button to clear all pairing information stored in HTC StereoClip (AUX). Green and Red LED will light alternatively for 3 seconds to clearing is complete.

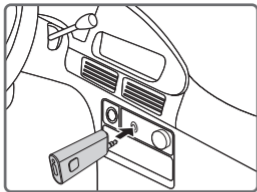
Configuring HTC Car for auto-pairing

1. Turn on your phone and launch HTC Car application.
2. On the HTC Car main panel, tap the status icons to enter the HTC Car's settings.
3. Make sure "Auto-connect" is selected and "Default audio-out accessory" is set to "HTC Car Bluetooth audio-out accessory".
4. When **HTC StereoClip (AUX)** is in pairing mode, the phone will automatically pair and connect to it.

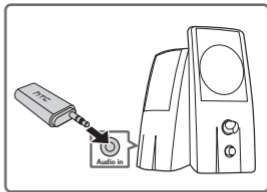
Connecting to audio system

Before you can enjoy listening to your music with an external high quality audio system, connect the audio dongle to the automobile radio or home stereo system which accepts audio input via a standard 3.5mm audio jack.

1. Remove the **HTC StereoClip (AUX)** cap and plug the **HTC StereoClip (AUX)** into the audio input (AUX) of the car audio system or home stereo system.
2. Turn on the car audio system or home stereo system.
3. Play the media files on your phone or tablet.



Automobile radio



Home stereo system

Reconnecting HTC StereoClip (AUX) to mobile devices

When **HTC StereoClip (AUX)** is turned off then on again, it will attempt to re-establish the connection to your phone or tablet automatically. Alternatively, press the **Control** button to re-establish the connection manually.

Using your audio dongle with an automobile radio stereo system

All activities related to the set-up of your audio dongle (including pairing with mobile devices and connection to your audio system) should not be undertaken whilst driving. When using your audio dongle, you must not undertake any inappropriate, unsafe or unlawful activity nor any activity that may distract you whilst driving. This may include (but is not limited to) changing the radio station or other settings via your mobile device. HTC does not accept any liability for any loss or damage that you or any third party incurs as a result of any misuse of the audio dongle. This does not limit HTC's liability for death or personal injury caused by HTC's negligence.

What the LED indicator means

Event	LED color & behavior	Status
Power off	Green for 1 second then Off	Powering On
	Solid Red for 4 seconds	Inadequate battery power to power on
	Solid Red	Battery is charging
	Solid Green	Battery is fully charged
Power on	Fast Flash Green	Pairing mode
	Flash Green 3 times in succession every 5 seconds	Devices are successfully paired and active
	Flash Red every 5 seconds	Low battery
	Red for 1 second then Off	Powering Off
	Flash Red then Green continually for 3 seconds	Clearing the pairing settings

Taking care of your HTC StereoClip (AUX)

- Always store **HTC StereoClip (AUX)** with the cap on.
- Avoid storing at extreme temperatures (above 45°C/113°F - including direct sunlight - or below -10°C/14°F). This can shorten battery life and may affect operation.
- Do not expose **HTC StereoClip (AUX)** to rain or other liquids.
- Never try to dismantle the product yourself. Contact authorised dealers or service centres for repair service.

Certification

CE

CE 2200

This product is CE marked according to the provisions of the R & TTE Directive (99/5/EC). Hereby, HTC, declares that this product is in compliance with the essential requirements and other relevant provisions of Directive 1999/5/EC.

For further information please consult <http://www.HTC.com>

Within the EU this device is intended to be used in Austria, Belgium, Bulgaria, Cyprus, Czech Republic, Denmark, Estonia, Finland, France, Germany, Greece, Hungary, Ireland, Italy, Latvia, Lithuania, Luxembourg, Malta, Poland, Portugal, Romania, Slovakia, Slovenia, Spain, Sweden, The Netherlands, United Kingdom, and within EFTA in Iceland, Norway and Switzerland.


Bluetooth

The Bluetooth® word mark and logos are owned by the Bluetooth SIG, Inc. and any use of such marks by HTC is under license. Other trademarks and trade names are those of their respective owners.

Compatibility for a Better Environment

The Directive on Waste Electrical and Electronic Equipment (WEEE), which entered into force as European law on the 13th February 2003, resulted in a major change in the treatment of electrical equipment at end-of-life.

The purpose of this directive is, as a priority, the prevention of WEEE, and in addition, to promote the reuse, recycling and other forms of recovery of such waste so as to reduce disposal.

The WEEE logo  on the product or on its box indicates that this product must not be disposed of or dumped with your other household

waste. You are liable to dispose of all your electronic or electrical waste equipment by relocating over to the specified collection point for recycling of such hazardous waste. Isolated collection and proper recovery of your electronic and electrical waste equipment at the time of disposal will allow us to help conserving natural resources. Moreover, proper recycling of the electronic and electrical waste equipment will ensure safety of human health and environment. For more information about electronic and electrical waste equipment disposal, recovery, and collection points, please contact your local city centre, household waste disposal service, shop from where you purchased the equipment, or manufacturer of the equipment.

FCC Statement

This equipment has been tested and found to comply with the limits for a Class B digital device, pursuant to Part 15 of the FCC Rules. These limits are designed to provide reasonable protection against harmful interference in a residential installation. This equipment generates, uses and can radiate radio frequency energy and, if not installed and used in accordance with the instructions, may cause harmful interference to radio communications. However, there is no guarantee that interference will not occur in a particular installation. If this equipment does cause harmful interference to radio or television reception, which can be determined by turning the equipment off and on, the user is encouraged to try to correct the interference by one of the following measures:

- Reorient or relocate the receiving antenna.
- Increase the separation between the equipment and receiver.
- Connect the equipment into an outlet on a circuit different from that to which the receiver is connected.
- Consult the dealer or an experienced radio/TV technician for help.

FCC Caution

- Any changes or modifications not expressly approved by the party responsible for compliance could void the user's authority to operate this equipment.
- This equipment complies with FCC radiation exposure limits set forth for an uncontrolled environment.
- This equipment should be installed and operated with minimum distance 20cm between the radiator & your body.
- End users must follow the specific operating instructions for satisfying RF exposure compliance.
- This device and its antenna(s) must not be co-located or operating in conjunction with any other antenna or transmitter.

FCC Notice

This device complies with Part 15 of the FCC Rules. Operation is subject to the following two conditions:

- (1) This device may not cause harmful interference, and
- (2) this device must accept any interference received, including interference that may cause undesired operation.

Industry Canada (IC) Statement

This device complies with Industry Canada licence-exempt RSS standard(s).

Operation is subject to the following two conditions: (1) this device may not cause interference, and (2) this device must accept any interference, including interference that may cause undesired operation of the device.

This equipment should be installed and operated with minimum distance 20cm between the radiator & your body.

IC French Statement

Le présent appareil est conforme aux CNR d'Industrie Canada applicables aux appareils radio exempts de licence. L'exploitation est autorisée aux deux conditions suivantes:

- (1) l'appareil ne doit pas produire de brouillage, et
- (2) l'utilisateur de l'appareil doit accepter tout brouillage radioélectrique subi, même si le brouillage est susceptible d'en compromettre le fonctionnement.

© 2012 HTC. All rights reserved. All other trademarks included herein are the property of their respective owners. The Bluetooth® word mark and logos are owned by the Bluetooth SIG, Inc. and any use of such marks by HTC is under license.

(Design and specifications subject to change without notice).