

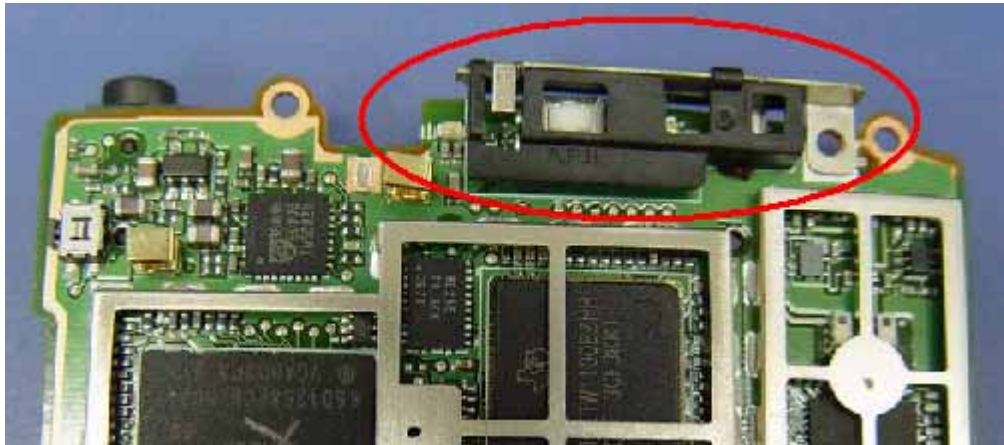
WLAN Antenna Performance

1. Overview:

This document includes Ibadge embedded antenna gain and pattern measurement results.

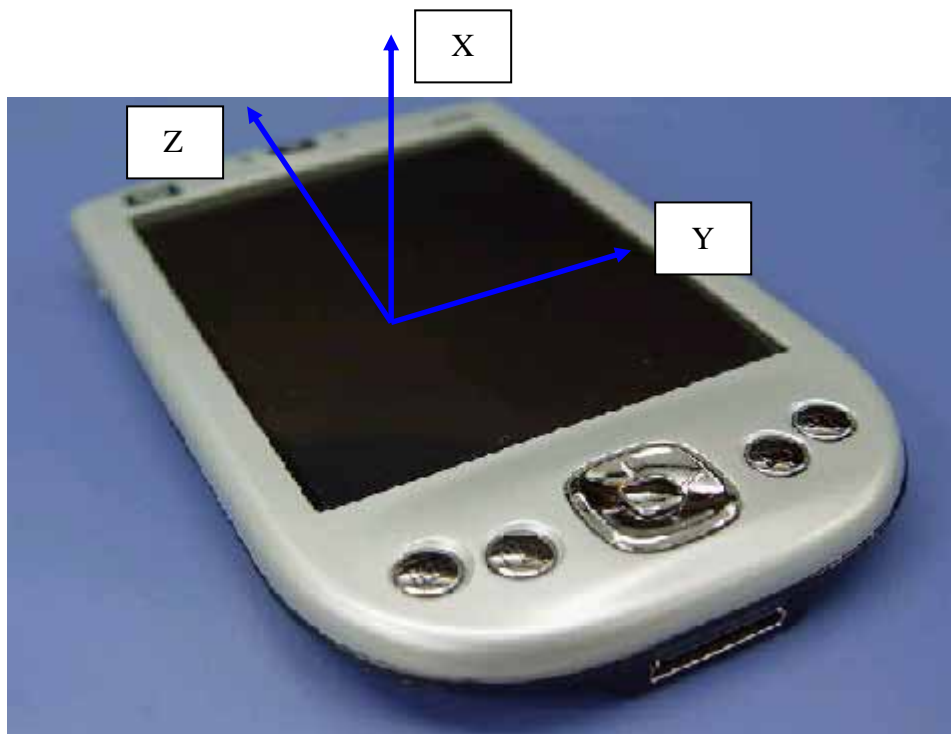
2. Antenna type:

WLAN: Inverted-F antenna

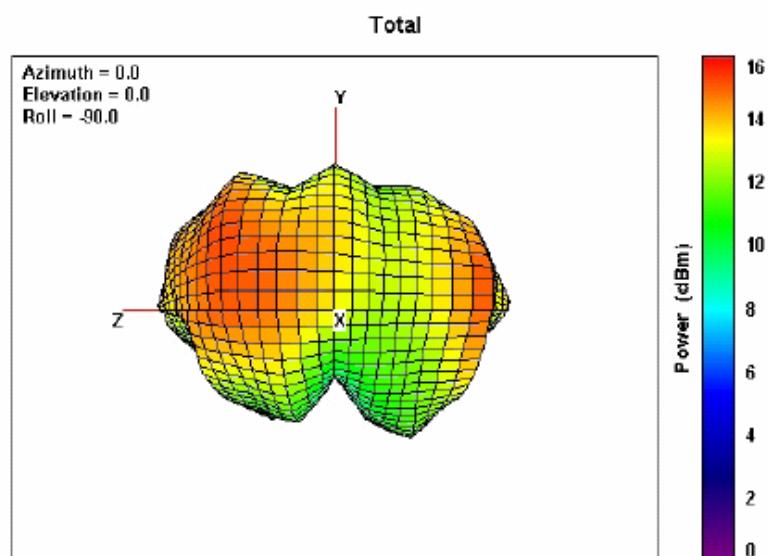
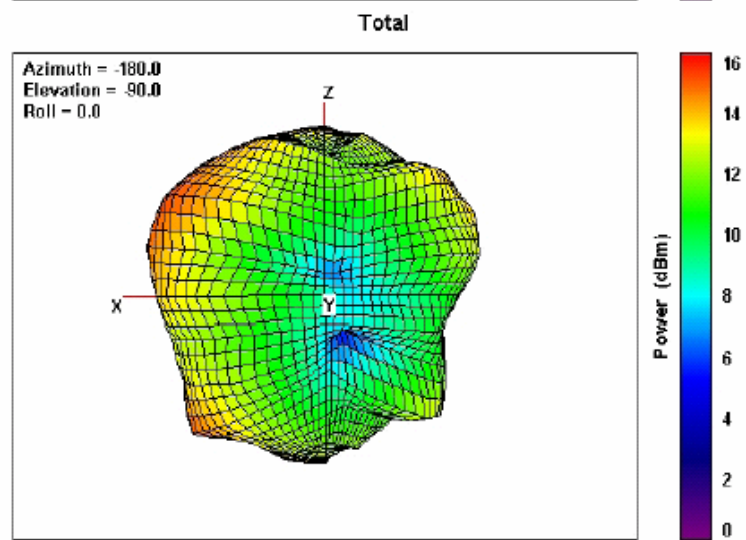
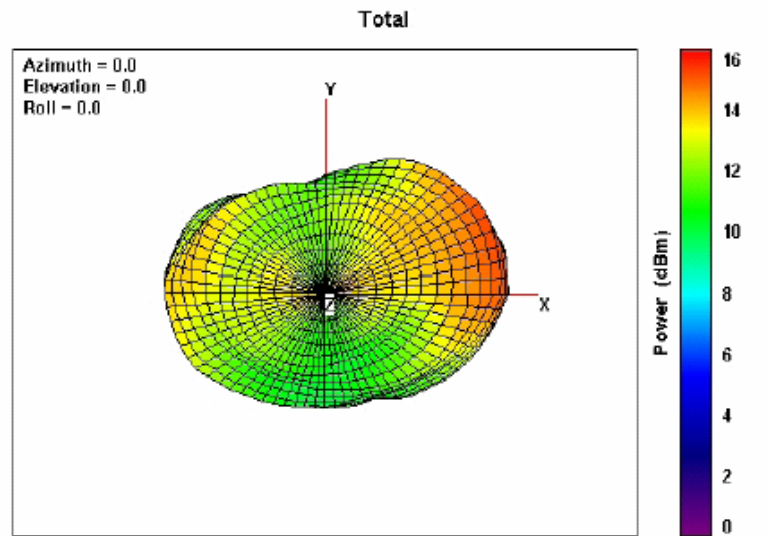


3. Gain Pattern:

3.1 Coordination Define:



3.2 Radiation Patterns:



3.3 Gain:

Test Condition: With stylus, SD card is inserted

Test Frequency: 2442MHz

Peak Gain: 0.85dBi

Average Gain: -3.02dBi