

## **Appendix B. Plots of SAR and Power Density Measurement**

The SAR and Power Density plots for highest measured SAR in each exposure configuration, wireless mode and frequency band combination are shown as follows.

# P01 UNII-6\_802.11ax HE160\_Rear Face\_0mm\_Ch111\_Ant 0+1

## Device under Test Properties

Model, Manufacturer	Dimensions [mm]	IMEI	DUT Type
WTW-P20120637-1	195.0 x 95.0 x 72.0		Other

## Exposure Conditions

Phantom Section, TSL	Position, Test Distance [mm]	Band	Group, UID	Frequency [MHz], Channel Number	Conversion Factor	TSL Conductivity [S/m]	TSL Permittivity
Flat,	Rear Face 0.00	U-NII-6	WLAN, 10755-AAB	6505	5.65	6.19	33.7

## Hardware Setup

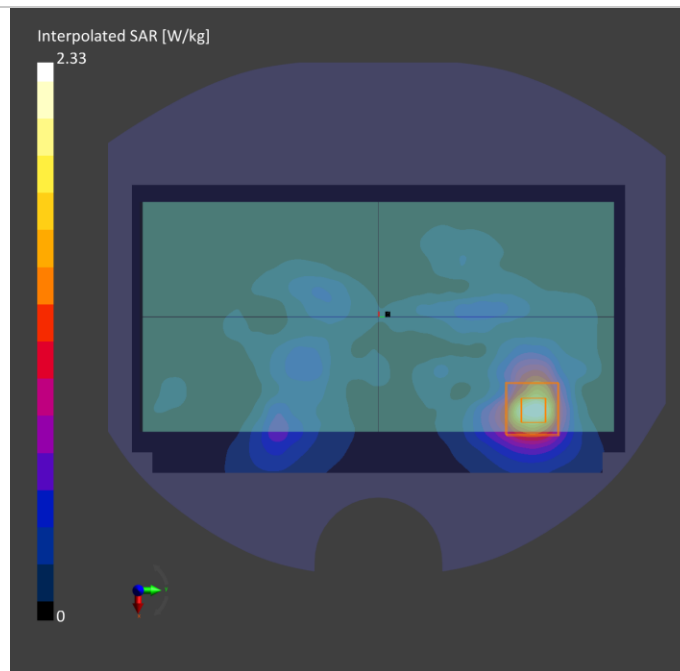
Phantom	TSL, Measured Date	Probe, Calibration Date	DAE, Calibration Date
Twin-SAM V8.0 (30deg probe tilt) - 1987	H50T72N1 , 2021-Apr-13	EX3DV4 - SN7555, 2020-09-28	DAE4 Sn1589, 2020-09-15

## Scan Setup

	Area Scan	Zoom Scan
Grid Extents [mm]	119.0 x 204.0	22.0 x 22.0 x 22.0
Grid Steps [mm]	8.5 x 8.5	3.4 x 3.4 x 1.4
Sensor Surface [mm]	3.0	1.4

## Measurement Results

	Area Scan	Zoom Scan
Date	2021-04-13	2021-04-13
psSAR1g [W/Kg]	0.478	0.493
psSAR10g [W/Kg]	0.163	0.165
Power Drift [dB]	0.11	-0.16
M2/M1 [%]		52.1
Dist 3dB Peak [mm]		8.7



Test Lab: Bureau Veritas ADT SAR/HAC/PD Testing Lab

Power Density Plot No.:

P01 WLAN UNII-6\_802.11ax HE160\_Rear Face\_0mm\_Ch111\_Ant 0+1

Device under Test Properties

Name, Manufacturer	Dimensions [mm]	IMEI	DUT Type
WTW-P20120637-1	195.0 x 95.0 x 72.0		Other

Exposure Conditions

Phantom Section	Position, Test Distance [mm]	Band	Group, UID	Frequency [MHz], Channel Number	Conversion Factor
5GAir	Rear Face, 2.00	U-NII-6	WLAN, 10755-AAB	6505	1.0

Hardware Setup

Phantom	Medium	Probe, Calibration Date	DAE, Calibration Date
mmWave	--Air--	EUmmWV3 - SN9361_F1-78GHz, 2020-09-24	DAE4 Sn1589, 2020-09-15

Scan Setup

	5G Scan
Grid Extents [mm]	25.0 x 25.0
Grid Steps [lambda]	0.25 x 0.25
Sensor Surface [mm]	2.0

Measurement Results

	5G Scan
Date	2021-04-13
Avg. Area [cm <sup>2</sup> ]	4.00
pStotavg [W/m <sup>2</sup> ]	3.28
pSnavg [W/m <sup>2</sup> ]	3.06
pSAPD [W/m <sup>2</sup> ]	4.13
E <sub>peak</sub> [V/m]	40.6

