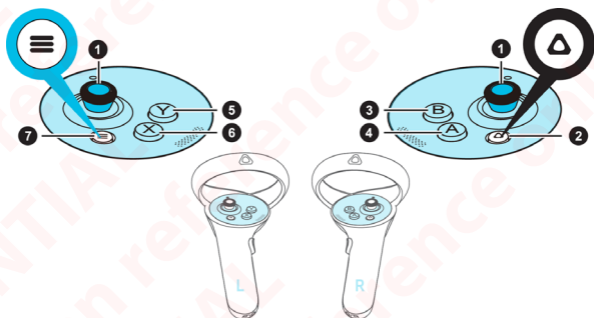


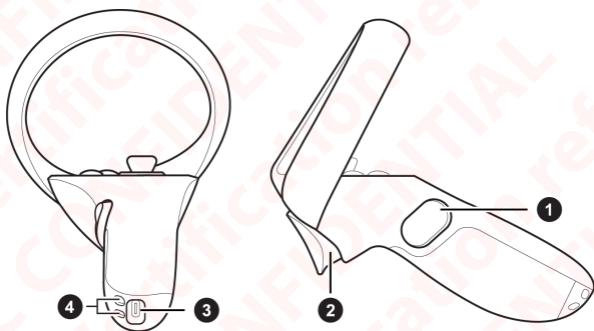
2Q8R100 / 2Q8R200

Guide

Controllers



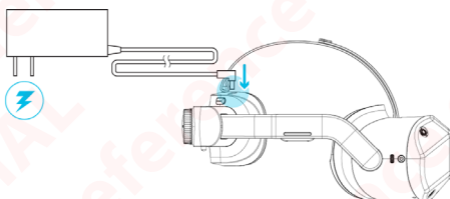
1. Thumbsticks
2. VIVE button
3. B button
4. A button
5. Y button
6. X button
7. Menu button



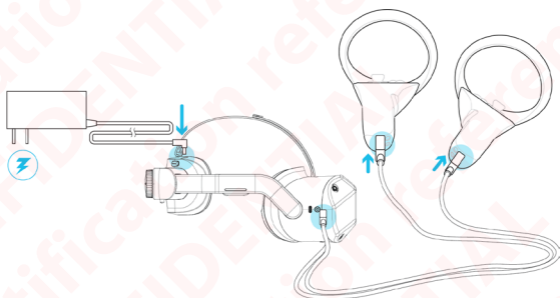
1. Grip button
2. Trigger
3. USB-C port
4. Wrist strap holes

Charging

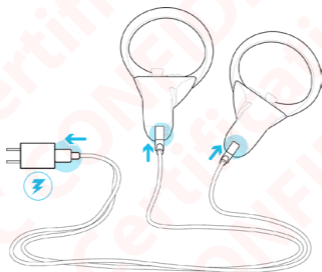
Charge your headset with the included adapter.



Charge the controllers by plugging them into the headset with the splitter cable.



Note: You can also charge the controllers with a USB charger and USB-C cable. Chargers with 10 watts or more are recommended.



Attach wrist straps

Attach the wrist straps the controllers before using them. The wrist straps help prevent damage and injury during vigorous movement.

1. Push the thread of the strap through the top hole of the controller.
2. Guide the thick end of the strap through the loop of the thread.
3. Cinch until tight.

