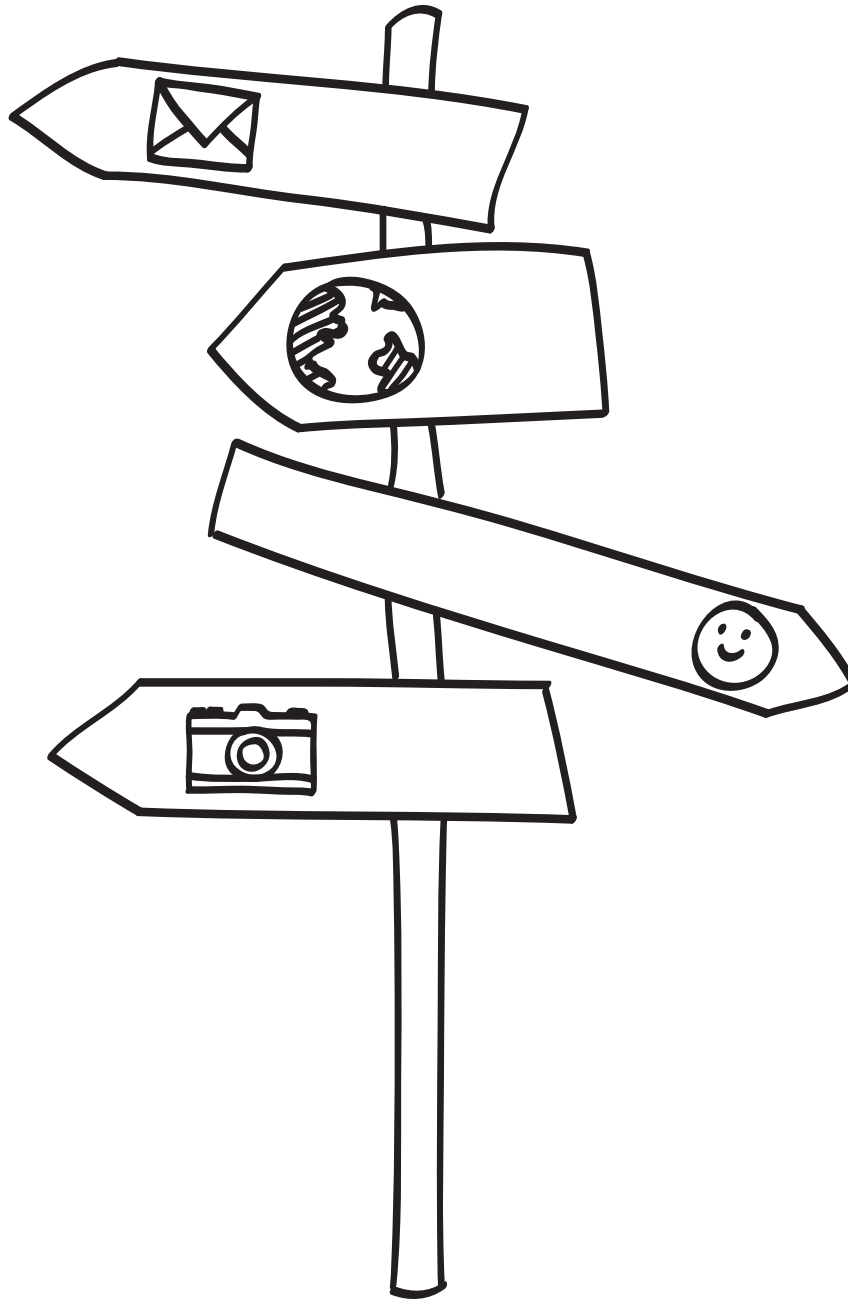


0P9O200

# Your **HTC** Desire 610

## User guide



htc

# Contents

---

## Unboxing

---

HTC Desire 610	5
nano SIM card	6
Storage card	7
Charging the battery	8
Switching the power on or off	9
Want some quick guidance on your phone?	9

---

## Trademarks and copyrights

---

## Conventions used in this guide

In this user guide, we use the following symbols to indicate useful and important information:



This is a note. A note often gives additional information, such as what happens when you choose to do or not to do a certain action. A note also provides information that may only be applicable to some situations.



This is a tip. A tip gives you an alternative way to do a particular step or procedure, or lets you know of an option that you may find helpful.



This indicates important information that you need in order to accomplish a certain task or to get a feature to work properly.



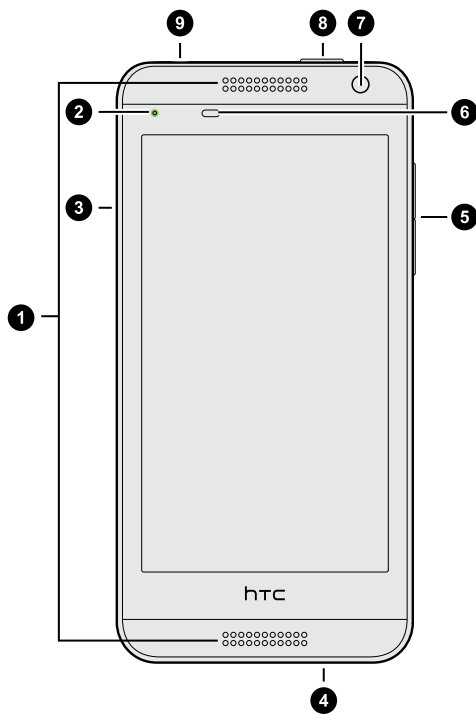
This provides safety precaution information, that is, information that you need to be careful about to prevent potential problems.

## Important note on recoverable data

Files and other data that have been deleted, cleared, removed, or erased from your device may still be recoverable by third-party data recovery software. Even a factory reset may not permanently erase all data from your phone, including personal information.

# Unboxing

## HTC Desire 610



1. Dual speakers
2. Notification LED
3. nano SIM and microSD™ card slots
4. USB connector
5. VOLUME
6. Proximity sensor
7. Front camera
8. POWER
9. 3.5mm headset jack



- HTC Desire 610 is available in either a 3G or LTE version, depending on your region and mobile operator. You need an LTE plan to use your operator's 4G/LTE network for voice calls and data services. Check with your operator for details.
- If you want to use a screen protector, please don't cover and block the proximity sensor. Purchase a screen protector designed for HTC Desire 610.

## nano SIM card

HTC Desire 610 uses a nano SIM card. The nano SIM card contains your phone number, service details, and memory for storing phonebook contacts and/or text messages.

---

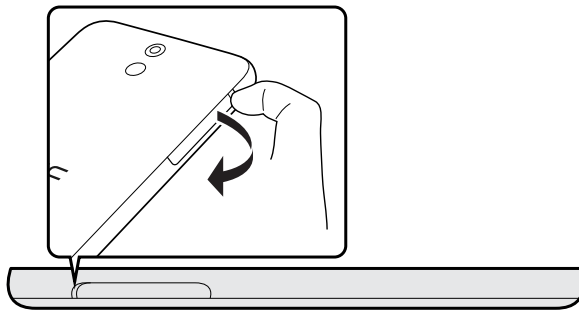
### Inserting the nano SIM card

---

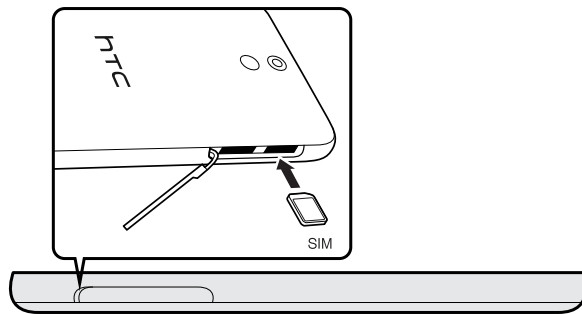


Use a standard nano SIM card only. Inserting a modified SIM card may cause the card to not fit properly or damage the card slot.

1. Open the slot cover with your thumb or finger.



2. With HTC Desire 610 facing down, make sure that the card's gold contacts are facing up and its cut-off corner facing in.



3. In the top slot, insert a nano SIM card, and then push it until it clicks in place.
4. To close the slot cover, slide the plastic hinge into the side and press the cover until it clicks into place.

---

## Removing the nano SIM card

---



Make sure to switch off HTC Desire 610 before removing your nano SIM card.

1. Open the slot cover with your thumb or finger.
2. Press the nano SIM card to eject it from its slot.
3. To close the slot cover, slide the plastic hinge into the side and press the cover until it clicks into place.

## Storage card

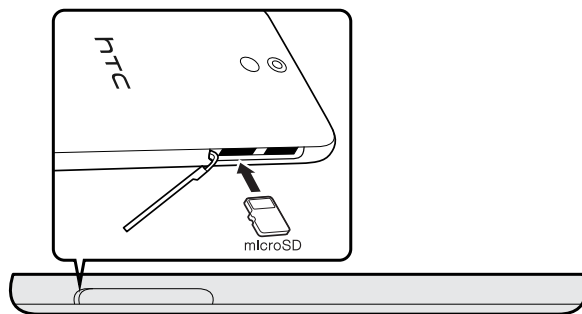
Use a storage card to store your photos, videos, and music.

---

### Inserting the storage card

---

1. Open the slot cover with your thumb or finger.
2. With HTC Desire 610 facing down, insert a microSD card into the bottom slot, with its gold contacts facing up and its cut-off corner facing in.



3. To close the slot cover, slide the plastic hinge into the side and press the cover until it clicks into place.

---

### Unmounting the storage card

---

When you need to remove the storage card while HTC Desire 610 is on, unmount the storage card first to prevent corrupting or damaging the files in the storage card.

1. Go to Settings, and then tap **Storage**.
2. Tap **Unmount SD card**.

---

## Removing the storage card

---

1. Open the slot cover with your thumb or finger.
2. Push the storage card in to eject it from its slot.
3. To close the slot cover, slide the plastic hinge into the side and press the cover until it clicks into place.

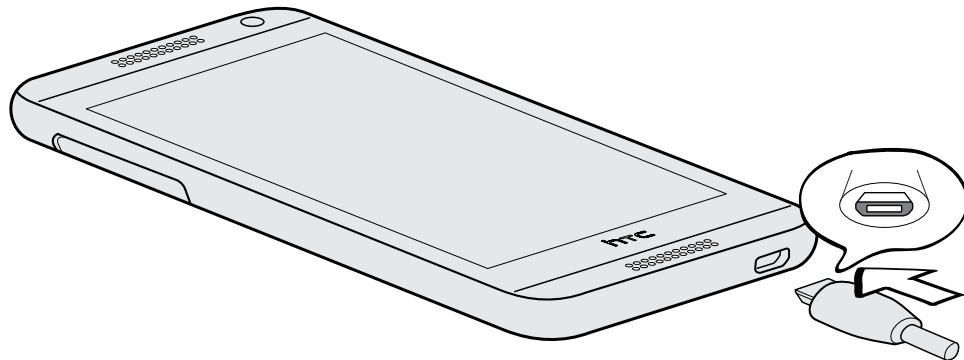
## Charging the battery

Before you turn on and start using HTC Desire 610, it is recommended that you charge the battery.



Use only the adapter and the USB cable that came with HTC Desire 610 to charge the battery. When the battery power is too low, make sure to use the power adapter to charge, not the USB cable connection with your computer.

1. Insert the small end of the USB cable into the USB connector.



2. Insert the other end of the USB cable into the power adapter.
3. Plug in the power adapter to an electrical outlet to start charging the battery.



- As a safety precaution, the battery may stop charging to avoid overheating.
- When you're using the Internet and charging the battery, HTC Desire 610 may become warmer. This is normal.
- To conserve energy, unplug the power adapter from the electrical outlet after you finish charging.



## Switching the power on or off

---

### Switching the power on

---

Press the POWER button until HTC Desire 610 vibrates.



When you turn on HTC Desire 610 for the first time, you'll need to set it up.

---


### Switching the power off

---

1. If the display is off, press the POWER button to turn it back on. If you've set up a lock screen, you need to unlock it.
2. Press and hold the POWER button for a few seconds.
3. Tap **Power off** on the options menu.

## Want some quick guidance on your phone?

Check out the friendly walkthroughs and the FAQs in the Tips & Help app to learn how to use your phone.

- When you see a Tips & Help tile in HTC BlinkFeed™, just tap the tile to know more about the tip.
- To open Tips & Help from the Home screen, tap  > **Tips & Help**.

You can then browse by subject matter and topic. Or tap , and then enter what you want to search for.

# Trademarks and copyrights

©2014 HTC Corporation. All Rights Reserved.

HTC, the HTC logo, HTC Desire, HTC BlinkFeed, HTC BoomSound, HTC Connect, HTC Sense, VideoPic, and Zoe are trademarks or service marks of HTC Corporation.

Google, the Google logo, Android, the Android logo, Android Market, Google Apps, Google Calendar, Google Checkout, Google Drive, Google Earth, Google Maps, Google Play, Google Wallet, Gmail, Picasa, and YouTube are trademarks of Google Inc.

Microsoft, Windows, ActiveSync, Excel, Outlook, PowerPoint, Windows Media, and Windows Vista are either registered trademarks or trademarks of Microsoft Corporation in the United States and/or other countries.

The *Bluetooth*<sup>®</sup> word mark and logos are registered trademarks owned by Bluetooth SIG, Inc.

Wi-Fi<sup>®</sup> is a registered trademark of the Wireless Fidelity Alliance, Inc.

LTE is a trademark of European Telecommunications Standards Institute (ETSI).

Facebook is a trademark of Facebook, Inc.

Twitter is a trademark of Twitter, Inc., and is used under license.

FLICKR and the FLICKR Dots logo are the trademarks and/or registered trademarks of Yahoo! Inc.

DLNA and the DLNA disc logo are trademarks or registered trademarks of Digital Living Network Alliance. All rights reserved. Unauthorized use is strictly prohibited.

Apple, Finder, iPhone, iTunes, iCal, iPhoto, Mac, Mac OS, and Safari are trademarks of Apple Inc. registered in the U.S. and other countries.

Dropbox is a trademark of Dropbox, Inc.

Polaris Office is a trademark of Infracore, Inc.

microSD is a trademark of SD-3C LLC.

All other company, product and service names mentioned herein are trademarks, registered trademarks or service marks of their respective owners. Not all marks listed necessarily appear in this User Guide.

The HTC Sync Manager software can be used with materials that you own or are lawfully authorized to use and/or duplicate. Unauthorized use and/or duplication of copyrighted material may be a violation of copyright law in the United States and/or other countries/regions. Violation of U.S. and international copyright laws may subject you to significant civil and/or criminal penalties. HTC Corporation shall not be held responsible for any damages or losses (direct or indirect) that you may incur as a result of using this software.

Screen images contained herein are simulated. HTC shall not be liable for technical or editorial errors or omissions contained herein, nor for incidental or consequential damages resulting from furnishing this material. The information is provided “as is” without warranty of any kind and is subject to change without notice. HTC also reserves the right to revise the content of this document at any time without prior notice.

No part of this document may be reproduced or transmitted in any form or by any means, electronic or mechanical, including photocopying, recording or storing in a retrieval system, or translated into any language in any form without prior written permission of HTC.