

Y2412
Y2414

2400/2500 MHz YAGI

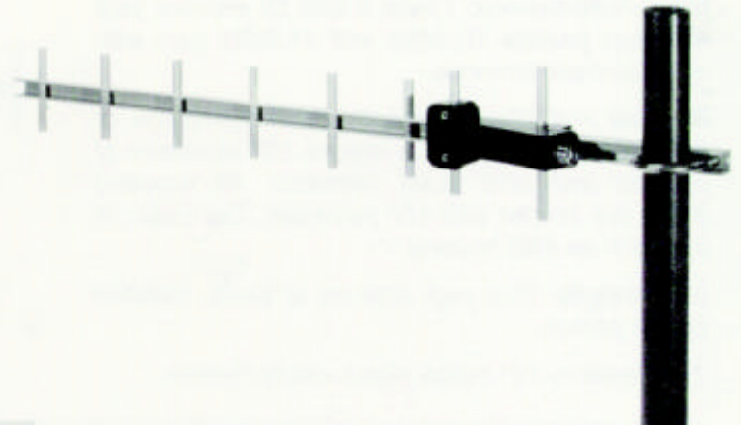
YAGI ANTENNA

High Performance: These 8 and 10 element yagi antennas provide 10.6dBd and 11.8dBd gain with wide band performance.

Rugged and Weatherproof: The construction of these standard duty yagis feature 1/2" aluminum U channel and 3/16" solid elements. All exposed areas are coated with UV polyester. The balun is sealed in an ABS housing.

Lightweight: This yagi antenna is easily installed by one person.

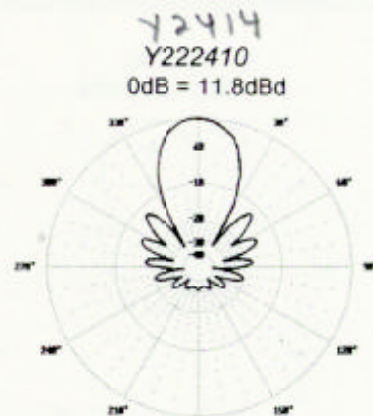
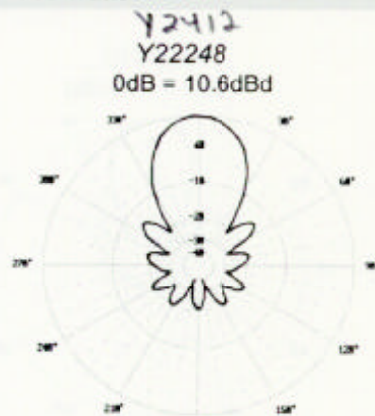
Termination: 12" Teflon pigtail with N Female.



SPECIFICATIONS

MATERIAL:	1/2" aluminum U channel boom 3/16" solid elements
FINISH:	UV inhibited polyester coat
WEIGHT:	<2 lbs.
LENGTH:	Y22248 Y222410 18" 21"
MOUNTING:	1 5/8" mast maximum
WIND SURVIVAL:	100 MPH +
FREQUENCY:	2400-2500MHz @ <2.0:1 VSWR
POWER RATING:	150 watts

Horizontal Radiation Patterns



Vertical Radiation Patterns

