

Introduction

The Marquee Bridge 49 (MB-49) is a complete 4.9 GHz wireless point-to-point (p-p) or point-to-multipoint (p-mp) system that links two Ethernet LANs together. It consists of two high-gain directional antennas and a pair of OFDM radios in a rugged outdoor enclosure. They connect to the LAN's Ethernet Switch on each end with an outdoor-rated Ethernet cable ordered separately. It is ideal for connecting two office LANs together, or for linking a WIPOP site to an Internet backbone. The Marquee Bridge 49 uses TurboCell software which supports VLAN bridging (802.1q protocol).

The Marquee Bridge 49 will accommodate virtually an unlimited number of client MAC addresses on each side of the link. The unit currently supports a single channel.

Marquee Bridge 49 Kit Contents

1. Two outdoor radios with RF connector for external antenna and mounting hardware
2. Two Cat 5 DC Power Injectors (surge protected Power Injectors are available as an option)
3. Two 110/240 VAC to 48 VDC power supplies
4. Windows -based YDI Configurator software
5. Two 3 foot low-loss coaxial cables
6. Two high-gain directional antennas

YDI EtherAnt outdoor Ethernet cables must be ordered separately. Available lengths are 50, 100, 200, or 300 ft.

Figure 1 – Marquee Bridge 49 Kit Contents



The Marquee Bridge 49 is intended for professional installation only on fixed outdoor structures. Please review the entire manual before powering up or deploying these units.

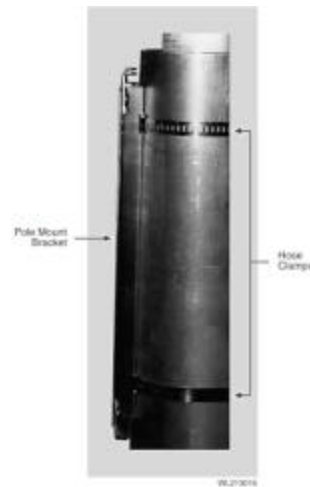
Installation

NOTE: All connectors must be properly water-proofed with all-weather electrical tape, Permagum, or equivalent. Do not use Silicon glue.

The Marquee Bridge 49 radio unit is installed by means of a pole mount adaptor bracket that is secured to the pole using two metal hose type clamps. Figure 1 shows the hardware provided to mount the outdoor RF Unit.

1. Install the outdoor unit pole mount adaptor bracket using the supplied metal hose type clamps (see Figure 2).

Figure 2 – Detail Showing Outdoor Unit Pole Mount Bracket



2. Align the four mounting studs on the outdoor unit with the bracket holes (see Figure 3) and secure to the bracket by pushing down the latches as shown in Figures 4a and 4b.

Figure 3 – Attaching the Marquee Bridge 49 Outdoor Unit to the Pole Mount Bracket

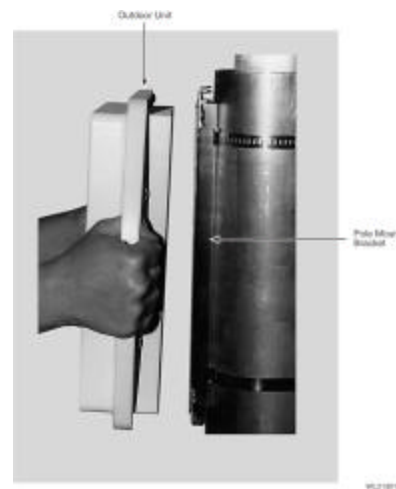


Figure 4a – Latching Bracket to Pole Mount

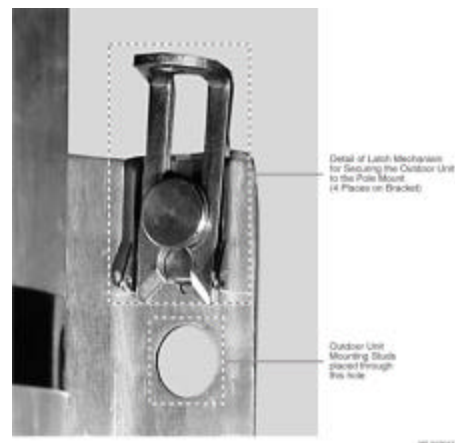
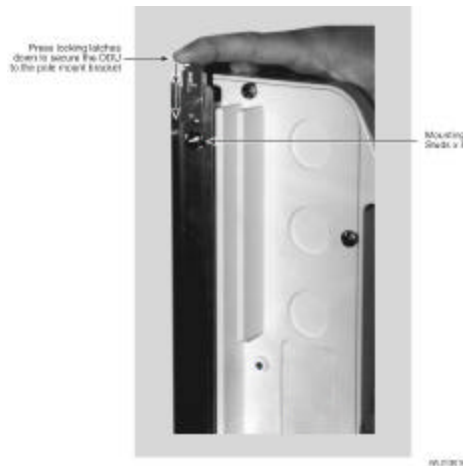


Figure 4b – Securing the Latches to the Pole Mount Bracket



3. Ensuring that there is no DC power applied to the DC Power Injector, plug the round connector of the outdoor Ethernet cable into the rear jack of the unit (Fig. 5), making sure the notch is correctly aligned with the tab on the jack as shown in Figure 6, then turn the round locking nut clockwise as you push in until it securely fastens onto the jack.

WARNING: Please verify that the round connector is properly plugged into the rear jack of the antenna prior to connecting DC power because it is possible to push it in the wrong way if enough force is used. If DC Power is applied while you are attempting to insert the round connector into the jack, it is possible that, as you rotate the plug in an effort to find the key, DC power pins will momentarily touch the Ethernet pins. **If this happens the Ethernet circuitry on the board will be damaged.** Any harm caused by this action will **not** be covered by the factory warranty and will be a billable repair.

Figure 5 – Connecting the Outdoor Ethernet Cable

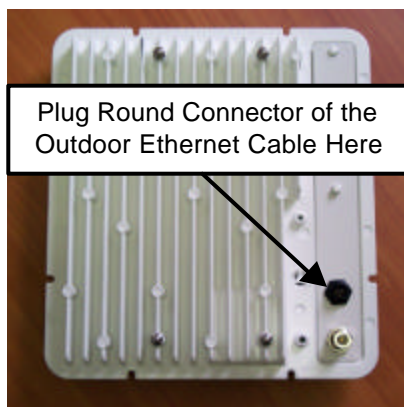


Figure 6 – Plugging the Round Connector



4. Attach the other end of the outdoor Ethernet cable to the Cat 5 DC Power Injector at port RJ-45 labeled "To ANT."

NOTE: The Cat 5 DC Power Injector is not in a waterproof enclosure and must be protected from the weather. It can be permanently mounted to a surface using the double stick tape found on the back of it.

5. Connect the Ethernet cable labeled "To PC or Router" from the Cat 5 DC Power Injector to your router, switch or hub. If you connect to a computer or PC, a crossover cable or adapter will be needed.
6. If your unit is placed on a non-metal pole or structure, install a #6 AWG insulated ground cable (not provided) to the ground connector in the back of the radio as shown in Figure 7. Use a self-threading screw and a flat washer to fasten the earth lug. This provides safeguard against lightning. For maximum protection, YDI also recommends the use of its optional surge protected DC Injector available from your YDI dealer (part No. 304-800620-002). This DC Injector has an additional wire to be connected to ground as shown on Fig. 8.

Figure 7 – Detail Showing Ground Cable Connection (this provides maximum lightning protection)

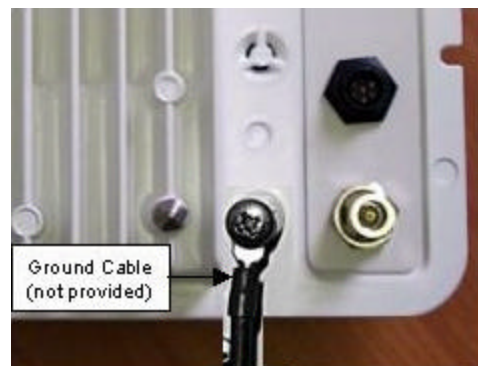
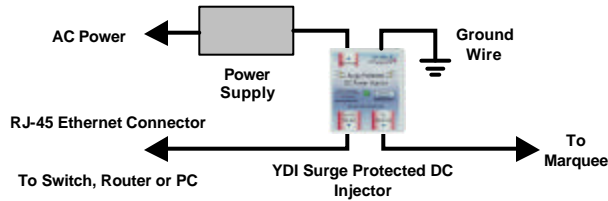


Figure 8 – Installation of the Optional YDI Surge Protected DC Injector

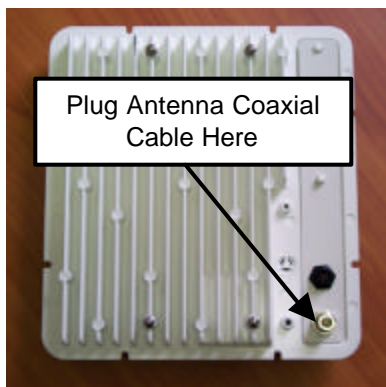


NOTE: The regular DC injector supplied with your kit is connected the same way but it does not have a ground wire

- Plug the antenna coaxial cable into the N-type female connector of the unit as shown in Figure 9. Plug the AC Adapter into an AC outlet and connect it to the “DC Power” jack on the Cat 5 DC Power Injector. Perform antenna alignment procedures at both sites. Proper antenna alignment is crucial for the correct operation of the Marquee Bridge 49 system and should only be accomplished by experienced professionals. After that your installation is complete.

WARNING: The MB-49 must be operated with a proper antenna or microwave terminator plugged into the N-type female jack of the unit. Operating the unit with nothing connected to the antenna jack may result in damage to the TX section of the unit which will not be covered by the factory warranty and will be a billable repair.

Figure 9 – Connecting the Antenna Coaxial Cable to the MB-49



LEDs

The Green LED is steady on when power is applied (Figure 10).

Figure 10 – Marquee Bridge 49 LEDs



Installing the Management Software

The Windows-based YDI Configurator software can be installed on a PC or workstation running Windows 98/ME, 2000, NT, or XP. This software has a GUI (Graphical User Interface), which makes it easy to use. The program allows you to locally or remotely perform the following procedures:

- Display a list of units running on the local network
- Display and edit the current configuration of the units
- Save and load configurations

IMPORTANT: Your Marquee Bridge 49 units must be on the same subnet as the computer with the YDI Configurator installed, or have a routable IP address, in order to access it. If not, you will get a status of Offline for the unit (see the Status column in Figure 10) even if the LEDs show activity. To configure the units, change the IP address of your computer to a 10.1.1.x sub-net. Once you have access to the unit, you can then assign a new IP address to it by clicking on the Setup tab and IP Host button.

Note that the YDI Configurator program is also used to manage AP-Plus units. Therefore you will see many grayed out options, features and settings. These only become available when you are connected to an AP-Plus, Orinoco AP, or router that has all these features available.

To install the YDI Configurator in Windows, insert the YDI CD-ROM included in the Marquee kit into the appropriate drive of your computer. Using your Windows Explorer, open the directory **Management Software\YDI Configurator** and run the Set Up program (YDI Configurator vx.xx.exe). Simply follow the instructions on the screen which will guide you through the entire process. After completing the YDI Configurator installation, you are ready to set up your system.

NOTE: For detailed information about the YDI Configurator, please refer to the online help, available by pressing F1 or clicking Help-> Index from the main screen.

Configuring the Marquee Bridge 49

The Marquee Bridge 49 is shipped from factory pre-configured for bridging operation and with the proper transmit power settings. The two units are set with the following default IP addresses:

10.1.1.10
and
10.1.1.11

The default read/write password is *public*.

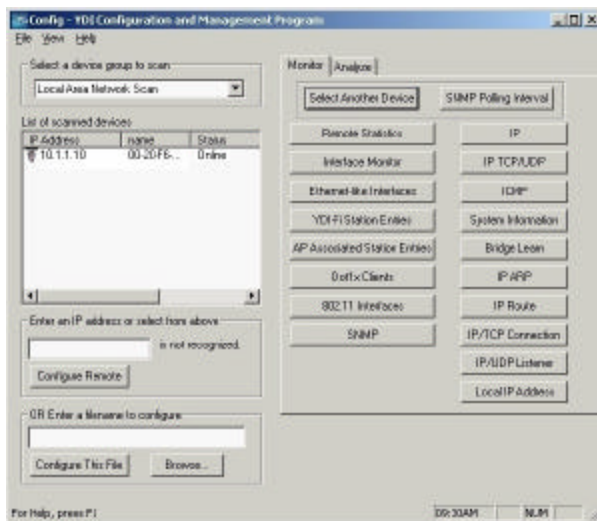
Some of the parameters that you may need to change are the following:

- IP addresses

- Read/Write password
- Radio frequency channel

1. Connect a crossover Ethernet cable from the Cat 5 DC Power Injector to your computer or PC.
2. The installation process should have placed two new icons on your computer's desktop: a Configurator icon and a PTP Configurator icon. The Configurator is the full-size version of the management program and is used for all type of configurations. The PMP Configurator is a compressed version of the program and is exclusively used for p-p configurations. Double click the Configurator icon. Alternatively, you may open the directory where the program has been installed (the default is **Program Files\Configurator**) and run the program **Config.exe**.
3. The Main Screen shown in Figure 11 appears. To scan for devices on the network, place the cursor in the *List of Scanned Devices* text box and right-click the mouse. A *Re-scan local network* button will appear. Click on the button. A list of devices will appear.

Figure 11 – YDI Configurator Main Screen



4. Click on the device you wish to configure. The selected device IP address will appear in the text box above the *Configure Remote* button (alternatively, you can enter the IP address of the Marquee Bridge 49 unit). Click this button.
5. A *Read/Write Password* text box will appear (see Figure 12). The default password is *public*. Click the **OK** button. It is suggested that you change the password later, write it down and keep it in a safe place.
6. After you login successfully, the *Setup* screen appears. Click on the *IP Host* button. The *IP Setup* screen appears (see Figure 13). Enter the IP Address, Subnet Mask, and Default Router IP Address. Click **OK**.

Figure 12 – Read/Write Password Screen

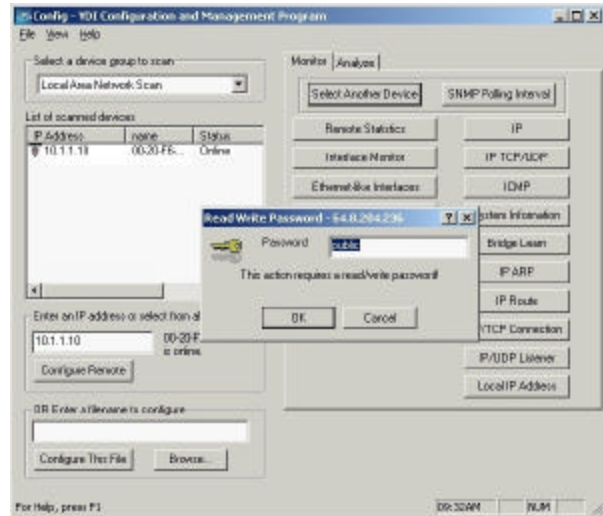


Figure 13 – IP Setup Screen

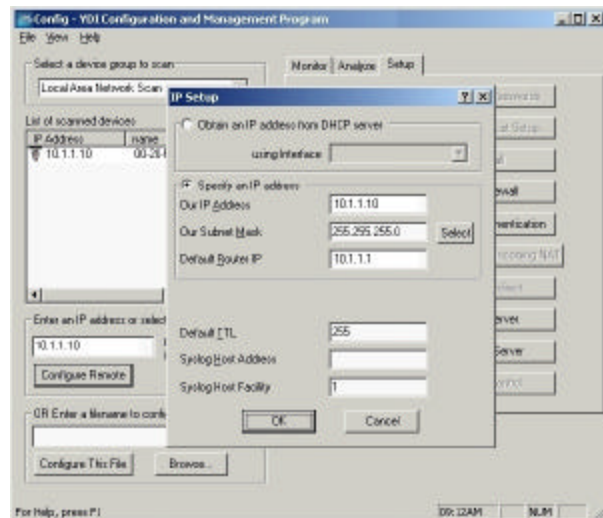
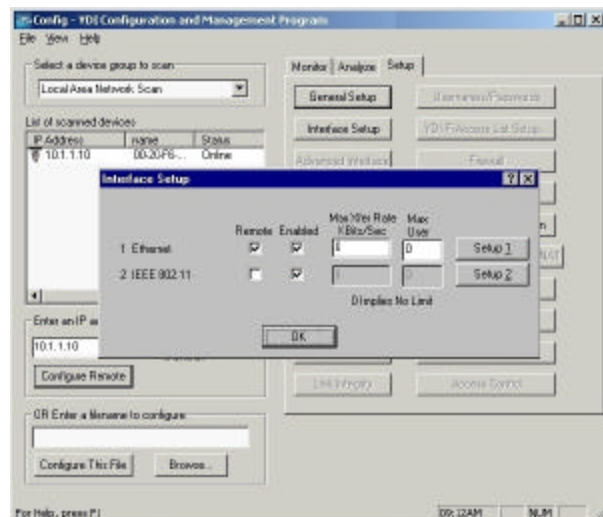
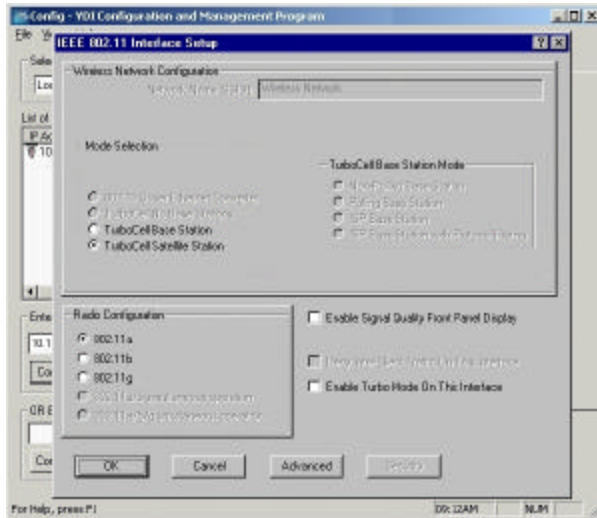


Figure 14 – Interface Setup Screen



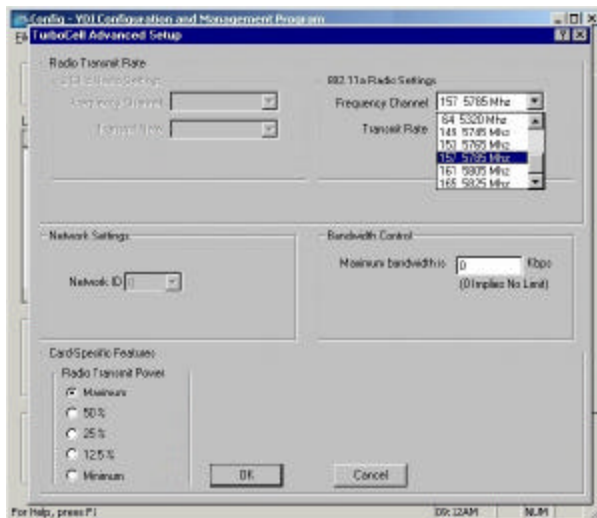
- On the *Setup* screen, click on the *Interface Setup* button. The corresponding screen appears (see Figure 14).
- Click on *Setup 2*. The *802.11 Setup* screen appears (see Figure 15). Select the type of Station this Marquee Bridge 49 is going to be. In a p-p configuration, one unit must be **Base** and the other must be **Remote (Satellite)**. In a p-mp configuration, one unit must be **Base** and all the others must be **Remote (Satellite)**. *Radio Configuration* must be set to **802.11a**. The Base station should be set for *Polling Base Station*. Leave the rest of the buttons unchanged.

Figure 15 – 802.11 Setup Screen



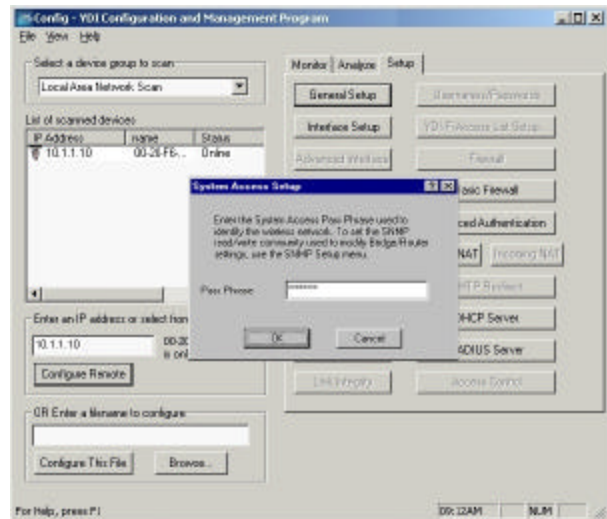
- Click the *Advanced* button. The corresponding screen appears (see Figure 16). Select a *Frequency Channel* from the pull down menu box. All units must be configured with the same value.

Figure 16 – 802.11 Advanced Setup Screen



- The Marquee Bridge 49 is optimized for a transmit rate of 36 Mbps and the transmit power is preset from factory with the proper value.
- NOTE:** Make sure the output power is set to 50% when using a sector antenna.
- Click **OK**. Click **OK** again.
 - Click the *System Access* button. The corresponding screen appears (see Figure 17). Enter a Pass Phrase to identify the wireless network. All units must be configured with the same value. Click **OK**.

Figure 17 – System Access Setup Screen



- Go to *File* and click *Save Config*: this will save the new settings.
- After the Marquee Bridge 49 is finished saving its configuration, exit the YDI Configurator program. The Marquee Bridge 49 is ready to use. Refer to the online help for complete instructions on setting up other features in the unit.

