

# User Manual

---

**SAMSUNG TECHWIN**

# **SAMSUNG SMARTCAM**

User Manual

SNH-E6411BN

---



CE 0678 !



# Samsung SmartCam


## User Manual

---

### Copyright

©2014 Samsung Techwin Co., Ltd. All rights reserved.

### Trademark

 **SAMSUNG TECHWIN** is the registered logo of Samsung Techwin Co., Ltd. The name of this product is the registered trademark of Samsung Techwin Co., Ltd. Other trademarks mentioned in this manual are the registered trademark of their respective company.

### Restriction

Samsung Techwin Co., Ltd shall reserve the copyright of this document. Under no circumstances, this document shall be reproduced, distributed or changed, partially or wholly, without formal authorization of Samsung Techwin.

### Disclaimer

Samsung Techwin makes the best to verify the integrity and correctness of the contents in this document, but no formal guarantee shall be provided. Use of this document and the subsequent results shall be entirely on the user's own responsibility. Samsung Techwin reserves the right to change the contents of this document without prior notice.

## SPECIFY SERVICE INSTRUCTIONS AND WARRANTY TERMS

This device complies with Part 15 of the FCC Rules.

Operation is subject to the following two conditions: (1) this device may not cause harmful interference, and (2) this device must accept any interference received, including interference that may cause undesired operation.

FCC NOTE:

THE MANUFACTURER IS NOT RESPONSIBLE FOR ANY RADIO OR TV INTERFERENCE CAUSED BY UNAUTHORIZED MODIFICATIONS TO THIS EQUIPMENT. SUCH MODIFICATIONS COULD VOID THE USER'S AUTHORITY TO OPERATE THE EQUIPMENT.

## Operational Description

The operational description shall fulfil the requirements of Rule Part 2.1033(b)(4). The rule part requires, "A brief description of the circuit functions of the device along with a statement describing how the device operates. This statement should contain a description of the ground system and antenna, if any, used with the device".

The above requirement has been further interpreted by the FCC to mean that the description shall:

- a. be an operational or technical description of how the device operates, is modulated and meets requirements;
- b. describe the EUT completely. What is it (in plain English as well as technical terms)? Give a clear, concise functional description of device operation.
- c. always describe the signal, such as modulation type, pulse repetition rate, signal type and information being sent. Describe all modulation types and all data rates.

## Instructions & Warranty

The manufacturer is not responsible for any loss or radio/TV interference caused by unauthorized modification of the product.

Such modification will void the warranty of the product as well as the user's right of use.

## WARNING

- The product must be assembled and installed by an adult.
- Before using, read all instructions on this manual thoroughly and follow operational instructions, warnings on this manual and printed on the product.
- To avoid entangled power cord, do not place it around the baby bed or other infant furniture. Keep this product and its power cord out of children's reach.

- Especially, the power cord should be installed carefully while keeping it out of children's reach.
- Never use the product near bath tub, sink, washing machine and in wet basement to avoid moisture.
- The product is designed for indoor use.
- The product is not designed for medical monitoring, and requires a grown-up's protective supervision on its use.
- To avoid overheating of the product, do not expose the product to direct sunlight; do not install or use near a heat source such as heater, radiator, cooking devices (ex: electric stove or oven) and other warming devices (ex: audio amplifier, TV, etc.).
- Make sure to keep ventilated while using the product.  
Avoid pillar or furniture that may block ventilation, when installing the product.
- Make sure to use the power adaptor provided. If used with unidentified adaptor, it may damage the product. The power adaptor must be used with regular household electric supply.
- Avoid sharp, pointed objects around the adaptor's cable, not to damage the cable.
- Be warned and never hold the cable's stripped part when connecting / disconnecting the adaptor to/from the wall outlet.
- To avoid entangled cable lines, avoid using cable extension for adaptor's power cord.
- The product's servicing is allowed only to authorized Samsung Techwin's service personnel.
- When using the product for children's care, be careful to keep the product out of children's reach.
- The product partially contains component which might cause respiration difficulty. Accessories and small parts of the product should be stored keeping out of children's reach.
- The product is not designed to replace responsibility of human supervision on children.
- The product is not equipped with device of immediate notification to adult with accidental/sudden children's move; it requires periodic checks and human supervision.
- This appliance and its antenna must not be collocated or operation in conjunction with any other antenna or transmitter. A minimum separation distance of 20 cm must be maintained between the antenna and the person for this appliance to satisfy the RF exposure requirements.

# Contents

## GETTING STARTED

Features .....	4
What's Included .....	5
Part names and functions .....	6

## INSTALLATION & NETWORK CONNECTION

Installation .....	8
Network Connection and Settings.....	9

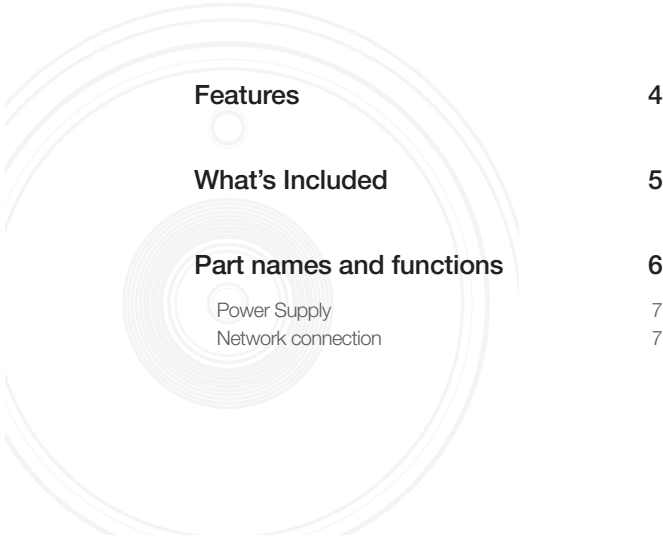
## MONITORING

Registration .....	11
Live Video .....	16
Setup .....	18
Event Alarm .....	26
Playback .....	26
Information .....	27

## APPENDIX

Specifications .....	29
Troubleshooting .....	32

# GETTING STARTED 01



<b>Features</b>	<b>4</b>
<b>What's Included</b>	<b>5</b>
<b>Part names and functions</b>	<b>6</b>
Power Supply	7
Network connection	7

## Features

- **Easy to install**
  - Simply visit the home page ([www.samsungsmartcam.com](http://www.samsungsmartcam.com)) and download and install the program without a separate installer program.
- **Remote monitoring**
  - Whenever and wherever if you are in the Internet enabled environment, remote monitoring is ready for you.
  - PC, laptop or smart phone can be used for monitoring.
- **Real-time alarm**
  - When a motion and sound are detected, your smartphone will generate real time alarms.
- **Saving in SD card**
  - When an event occurs, the user can save the video in their SD card.
- **Two-way Audio**
  - With the built-in speakers and microphone, you can make Two-way communications.  
However, it is available only with the smart phone. (Not applicable to the PC or laptop computer.)
- **IR LED**
  - At low illumination levels, you can use an IR LED for monitoring purposes.

# What's Included

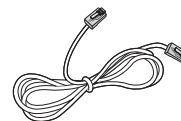
Check for components when opening the product package.



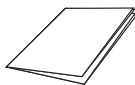
Camera



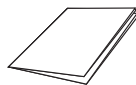
Power Adaptor



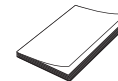
Network Cable



Quick Start Guide



Warranty Card

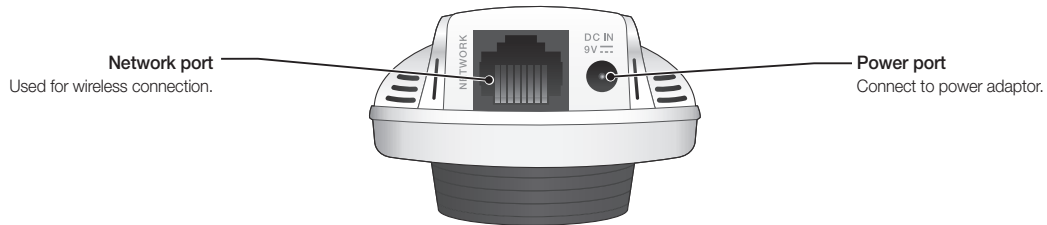
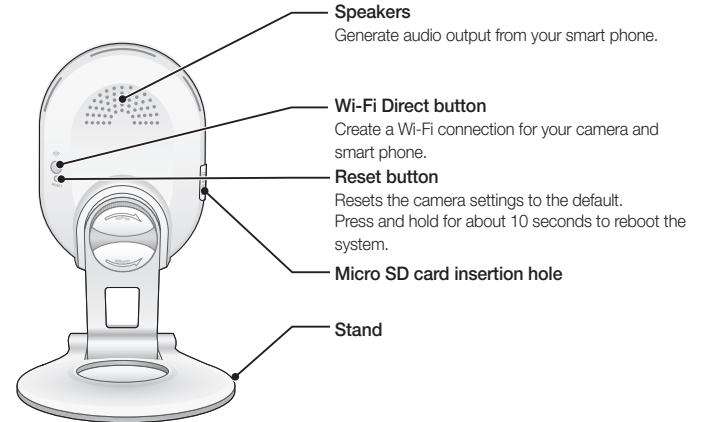
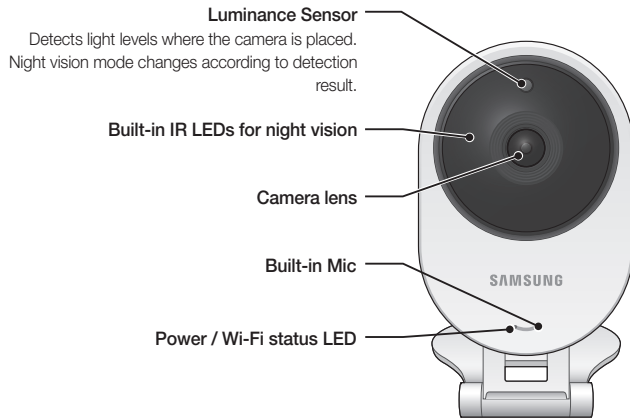


GPL Licence



- Please save the packaging. You will need the serial number later to register the camera.

# Part names and functions

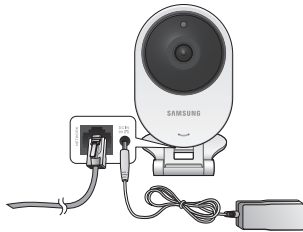


## Power Supply

Plug-in the camera power adaptor to the wall outlet and connect the camera as shown.



- Make sure to use the provided power adaptor. If you use an adaptor other than the power supply adaptor provided in our package, the product may not operate properly.
- It will take about 1 min for the camera to boot-up completely.
- When the boot-up is complete, the power LED color will change from red to blue.



## Network connection

Connect the provided network cable to the camera's network terminal.

For further details on network configuration, refer to "**Network Connection and Settings**". (Page 9)

## LED status

LED indicator shows operational status with colors.

Refer to table below for detailed meaning of the LED indicator.

Color	Status
Red	Booting up
Red Blinking	Booting completed / Establishing network connection
Blue Blinking	Connecting to the network.
Blue	Local connection established
Green	Connection to server completed / Normal operation
Magenta	Updating firmware



# INSTALLATION & NETWORK CONNECTION

## Installation

### Precautions

1. Install the camera in a place where the Wi-Fi signal can be reached and without interference.
2. Keep it away from humidity such as around the humidifier.
3. Keep it away from direct sunlight, strong light or dust; install it in a place with clear view.
4. Do not install it in a place where there are a lot of obstacles.
5. Keep the lens clean at all times.  
Wipe off the dust with a soft cloth.

### Installation 8

Precautions 8

### Network Connection and Settings 9

Precautions 9

Connecting via network cable 10

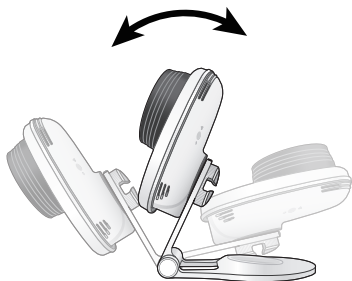
Wi-Fi connection setting 10

## Adjusting the Angle

1. Adjust the camera's shooting angle as appropriate.



- Do not put excessive force. Otherwise, it may cause damage to the camera.



# Network Connection and Settings

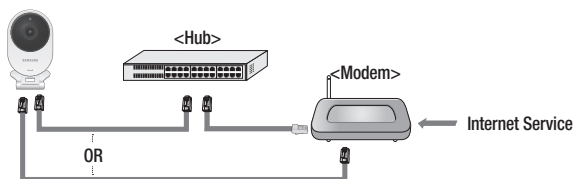
## Precautions

- The wireless network access may fail, depending on the communications environment.
- For details about the network settings and password, contact your network administrator or service provider.
- For a specific Internet service requiring user authentication, you may not access the service. If this is the case, contact the service provider.
- Do not access the unauthorized network.
- The farther the distance from the Wireless Access Point, the longer time the network connection may take.
- If you fail to access the selected wireless network, try a different Wireless Access Point to make access.
- For more information about the router or the wireless connection, refer to the documentation of the router or contact the router manufacturer.
- If the camera is connected to a multiple-Wireless Access Point network environment, some video packets may be lost, depending on the network traffic load.
- According to the network policy (blocking UDP) of the service provider, the video transmission can be limited to 7 minutes. For more details, refer to the descriptions on page 18, <Relay Mode>.
- In addition to the above two situations, you may encounter a network delay or interruption due to the network conditions.
- Some hubs can have compatibility issues.

## Connecting via network cable

If you do not have a Wireless Access Point, you must connect the camera using LAN cable directly to your home router.

1. When you apply the power, the power status LED is lit red, and it will change to red blinking when the booting is completed.
2. Connect the network cable to the camera and to the home router as shown below.



3. The status LED will become steady blue once the camera is connected to the router. (may take up to 30sec).  
If the status LED (blue) is not lit, repeat steps 2 through the end and check it again.
4. The status LED will become steady green once the camera is connected to server.

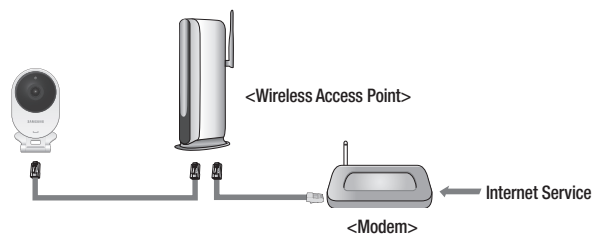


- It is recommended to set the router to DHCP(Dynamic Host Configuration Protocol) server.  
If you want to use static IP address, please refer to **<Wired Network>** on page 20.
- If the router's UPnP is not set, then you might be connected in relay mode.  
The settings may differ depending on the connected Broadband Router model.  
For more information, refer to the user manual of the applicable router.

## Wi-Fi connection setting

If you want to connect a camera to Wi-Fi, first connect the network cable and try to make a connection to the Wi-Fi network.

1. When you apply the power, the power status LED is lit red, and it will change to red blinking when the booting is completed.
2. Use the network cable (LAN cable) to connect the LAN port of the unit to the LAN port of the Wireless Access Point.



3. Register and select the camera according to guide of 03. Monitoring.
4. Set your wireless network environment using the guideline **<Wireless Network>** on page 21.



- If you want to connect your camera to Wi-Fi, you need a hub that supports wireless networking.
- Using the camera's Wi-Fi Direct function, you can easily make a Wi-Fi connection from your mobile phone.
- When the wireless network settings are completed, remove the LAN cable.
- If you fail to connect to the Internet service, contact the service provider for details.

# MONITORING

# 03

<b>Registration</b>	<b>11</b>	<b>Event Alarm</b>	<b>26</b>
Web browser requirements	11		
Starting SmartCam	11		
<b>Live Video</b>	<b>16</b>	<b>Playback</b>	<b>26</b>
Monitoring options	17		
<b>Setup</b>	<b>18</b>	<b>Information</b>	<b>27</b>
Basic Info	18	My Account	27
Network	20	Support	28
Time	22		
Alarm & Notification	23		
Alarm Schedule	24		
SD card	25		

## Registration

Once you register the product with the site, you can monitor the camera video on the PC or laptop computer.

### Web browser requirements

Windows	Mac
Windows XP, 7 supported - Internet Explorer 8 or higher (The 64-bit is not supported.) - Firefox - Chrome	Mac OSX 10.7 Lion or higher is supported - Safari - Firefox - Chrome

### Starting SmartCam

1. From your PC, launch your web browser.
2. Go to <http://www.samsungsmartcam.com>.
3. Select preferred language.
4. Click <Sign up> or <Starting SmartCam>.

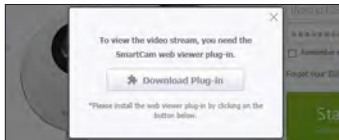


## ❖ Plug in installation

You need to install your plug in to automatically search for cameras connected to the network and view the video in your camera.

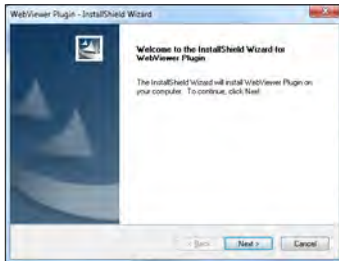
- If you login or click <Starting SmartCam> in a PC where the plug in is not installed, the installation message window will pop up.
- When you install the plug in, the web browser will be terminated and you need to launch it again.

- 1) Click <Download Plug-in>, run the setup file.

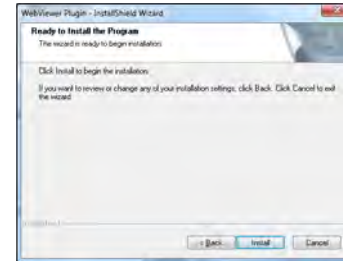


## For Windows

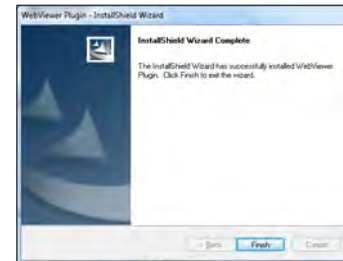
- 2) Click <Next>.



- 3) Click <Install> to begin the installation.

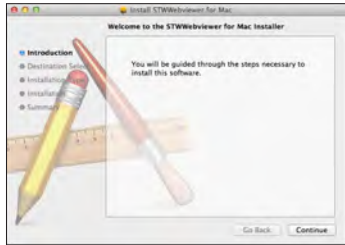


- 4) Installation has completed.



## For Mac

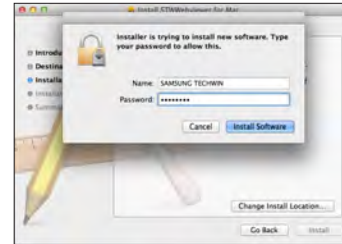
- 2) Click <Continue>.



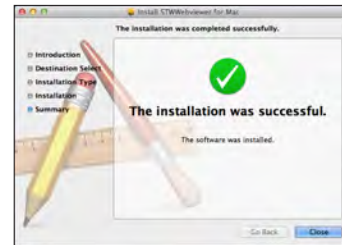
- 3) Click <Install>.



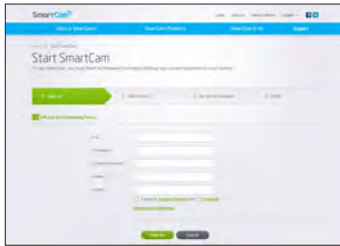
- 4) Enter MAC PC password and click <Install Software>.



- 5) Installation has completed.



5. Enter the requested information, and click <Sign Up>.



- ID : Using alphabetical characters and numbers, make a combination using 8 to 14 letters.
- Password : To strengthen security, create a password with a combination of special characters, numerals and English letters.

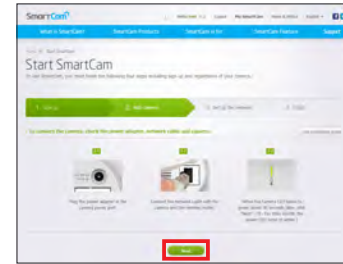


- Length and other restrictions of password.

- A combination of English letters/numerals/special characters: 8 digits or more
- A combination of English letters/numerals: 10 digits or more
- The password must not be identical to your ID.
- No simple repetitive pattern must be used.  
e.g., 1212abab,azxsazxs
- You cannot use 4 or more consecutive letters.  
e.g., 1234, abcd
- You cannot use 4 or more consecutive qwerty keyboard letters.  
e.g., asdf, 7890
- You cannot use any letter 4 consecutive times.  
e.g., !!!!, 1111, aaaa

- Confirm Password : Please enter the password again for confirmation.
- Name : Enter the user name.
- E-mail : Please make sure you enter correct email address as you will have to use the email address to receive temporary ID/password when you lost your user ID or password.

6. According to the network connection and setting, click <Next> when the camera LED turns into green.

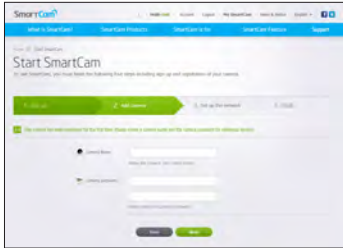


7. Select the serial number of the camera to be added from the camera search list.  
If the camera is not found, enter the serial number manually.
8. Click <Next>.



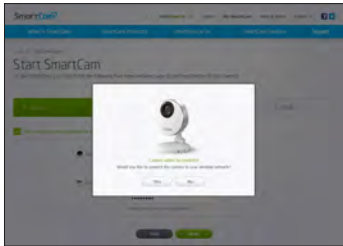
- Serial number can be found the label on the side of the packaging or on the rear of the product.
- The computer and the camera has to be on the same network router to auto detect the cameras.

9. Create <Camera Name> and <Camera password>.
10. Click <Next>.

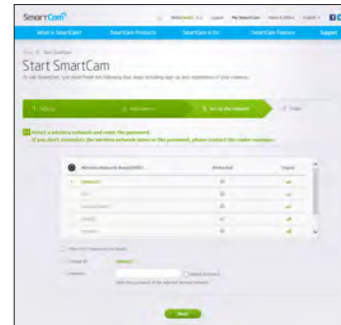


- The camera password is used to block the unauthorized access to your camera.
- Create camera password using alphanumeric characters between 1 to 8 without any space.

11. After adding the camera, click <Yes> in the wireless network setup pop-up window.

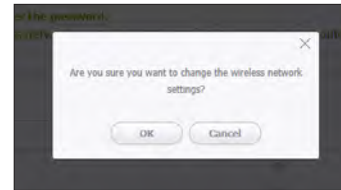


12. Select your Wireless Network from the list.
13. Enter the password of your Wireless Network and click <Next>.



- If your Wireless Network is hidden, select <Other Wi-Fi Networks (not listed)>.
- Select <Display password> to display the password.

14. Click <OK>.

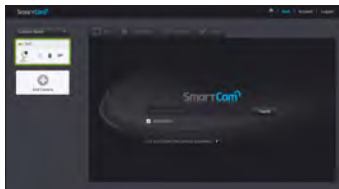




15. Unplug the network cable from the camera and the router.
16. Click <Finish> if the <Finish> button is activated.



17. Once the camera is successfully registered, you can check the camera in the camera list.



## Live Video

1. Select a camera from the camera list at the upper left hand of the screen.



- ☰
  - The gray icon indicates the camera is inactive so you cannot monitor it right now.
- 2. Enter the camera password and click <Apply>.
- ☰
  - Check on <Remember> to access your camera without entering the password next time.
  - If you want to change the Camera password, please refer to <Basic Info> on page 18.
- 3. Live video will be displayed on the screen.

