

Photo 5. EUT, Case Opened

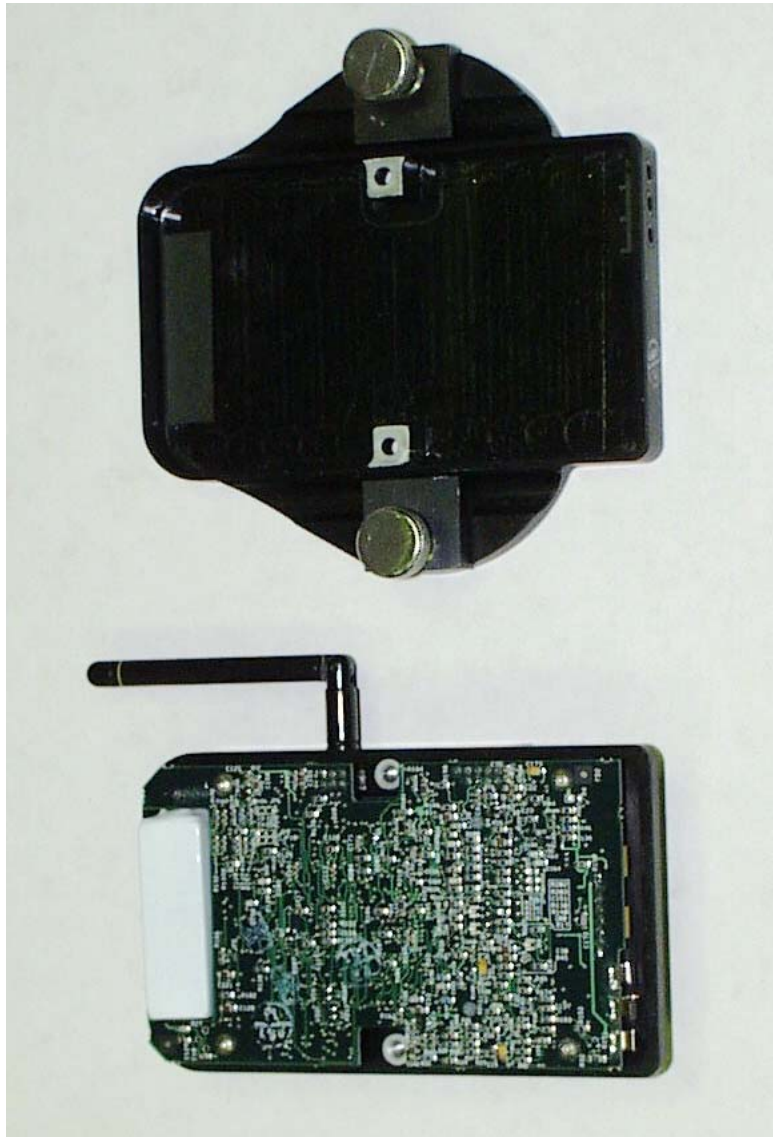


Photo 6. EUT, Top View of Laser Alignment Head CPU Board

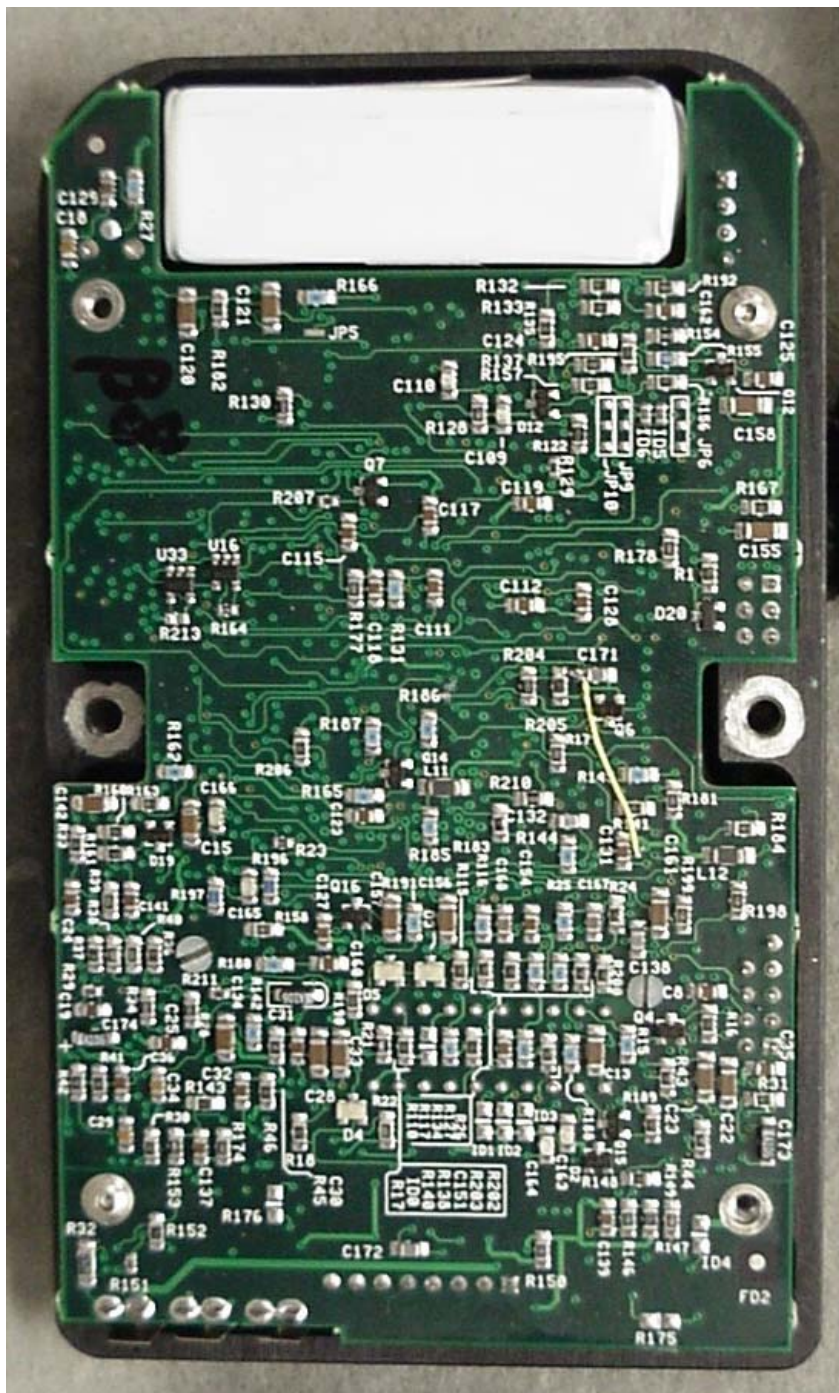


Photo 7. EUT, Bottom View of Laser Alignment Head CPU Board

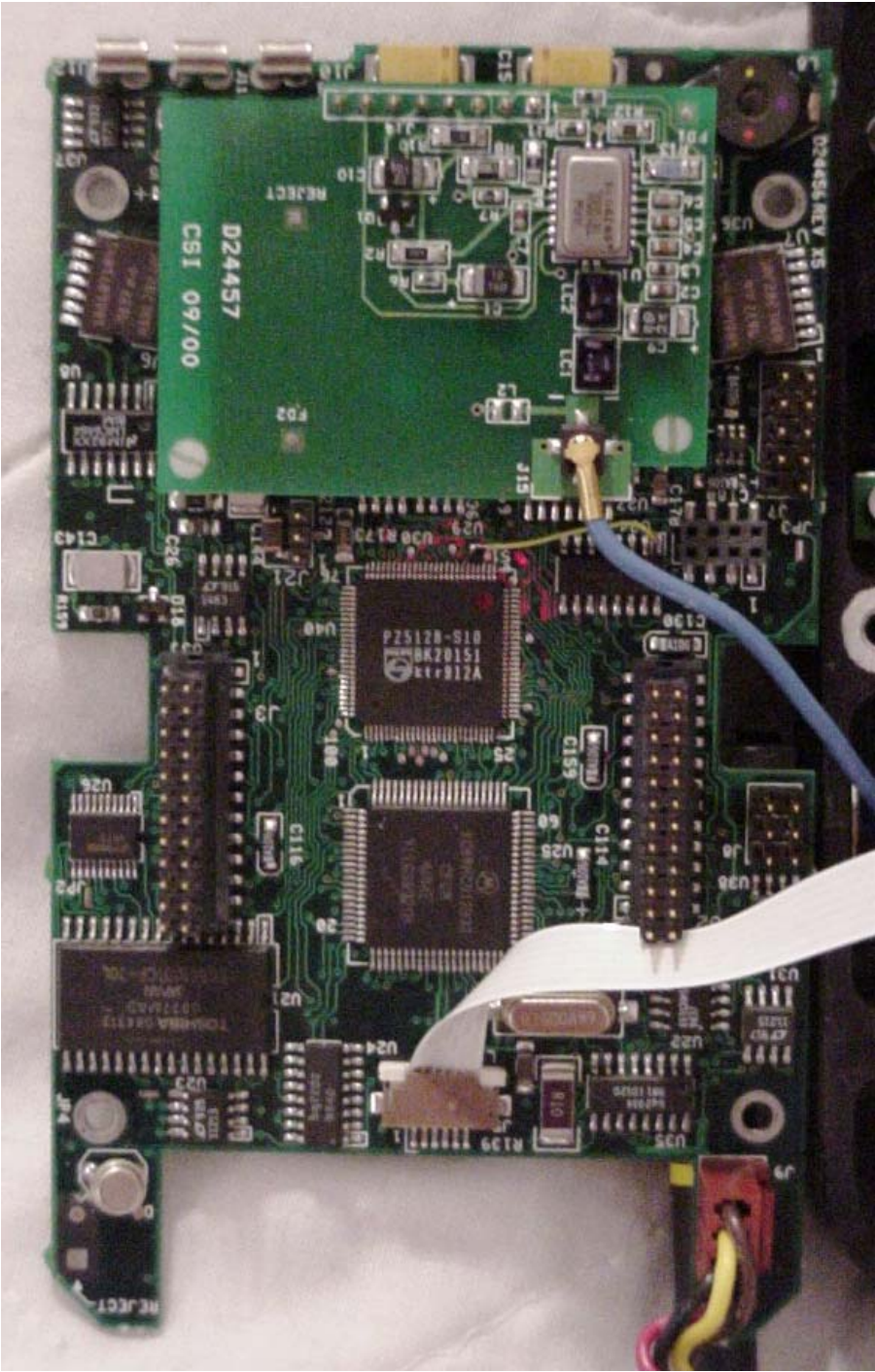


Photo 8. EUT, Bottom View of Laser Alignment Head CPU Board (TX Board Removed)

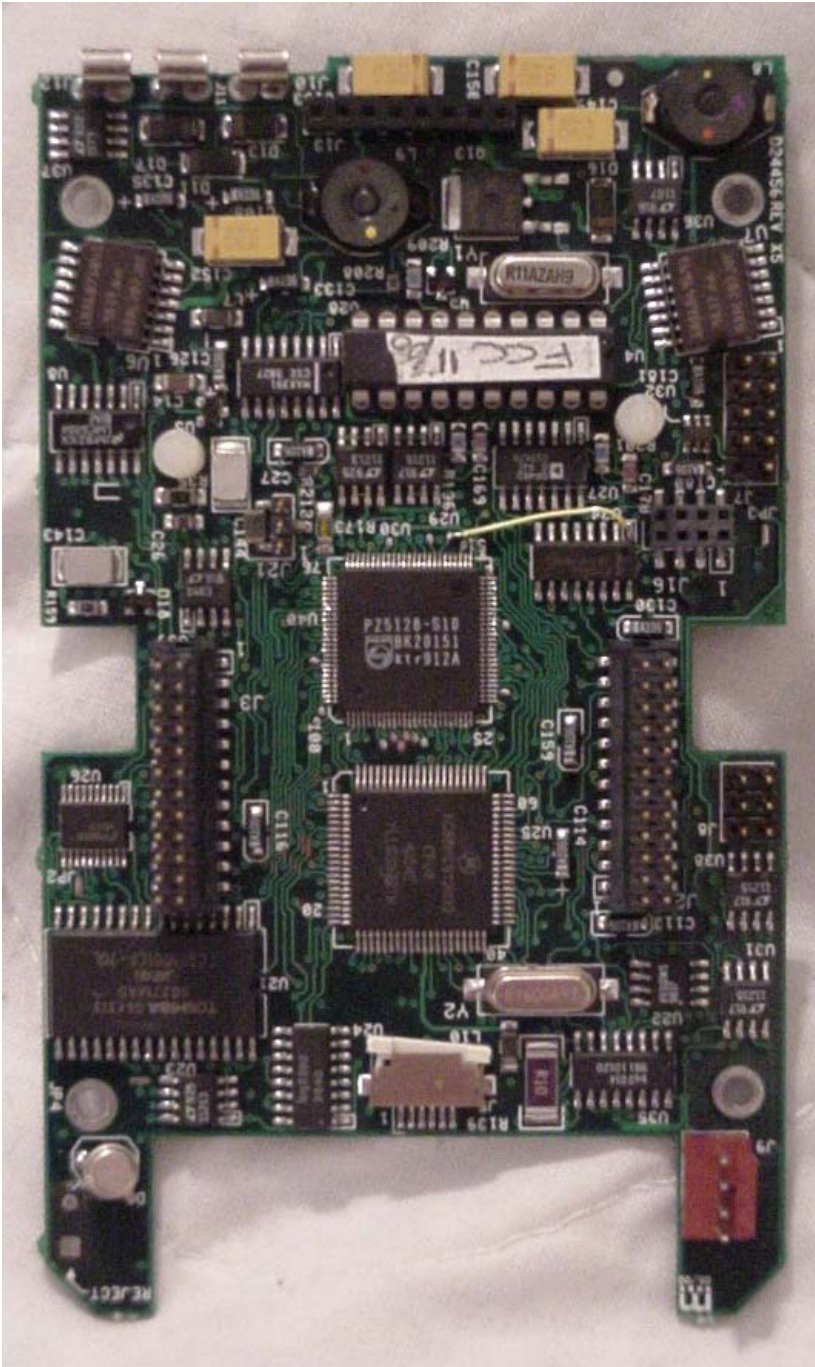


Photo 9. EUT, Top View of TX Board

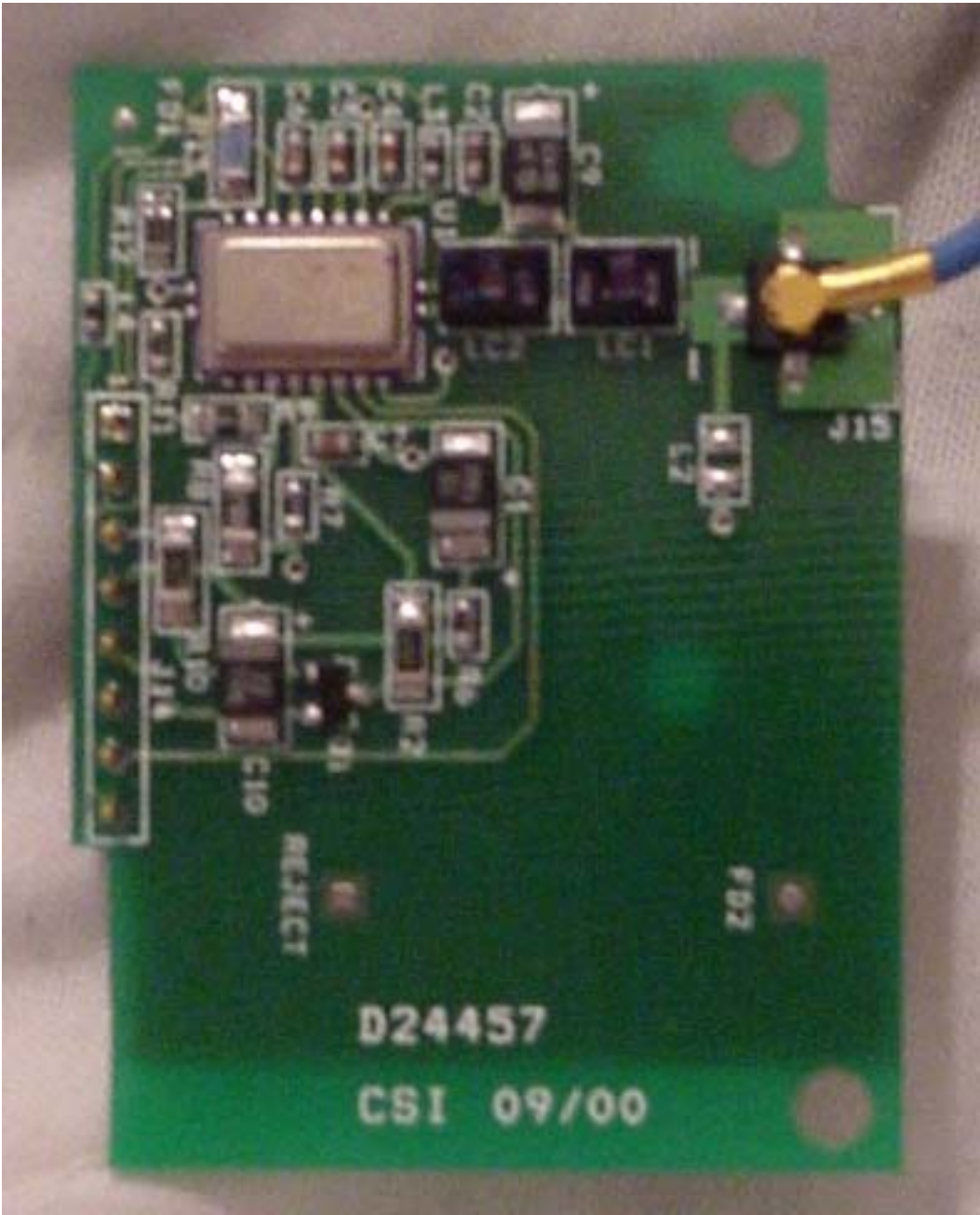


Photo 10. EUT, Bottom View of TX Board

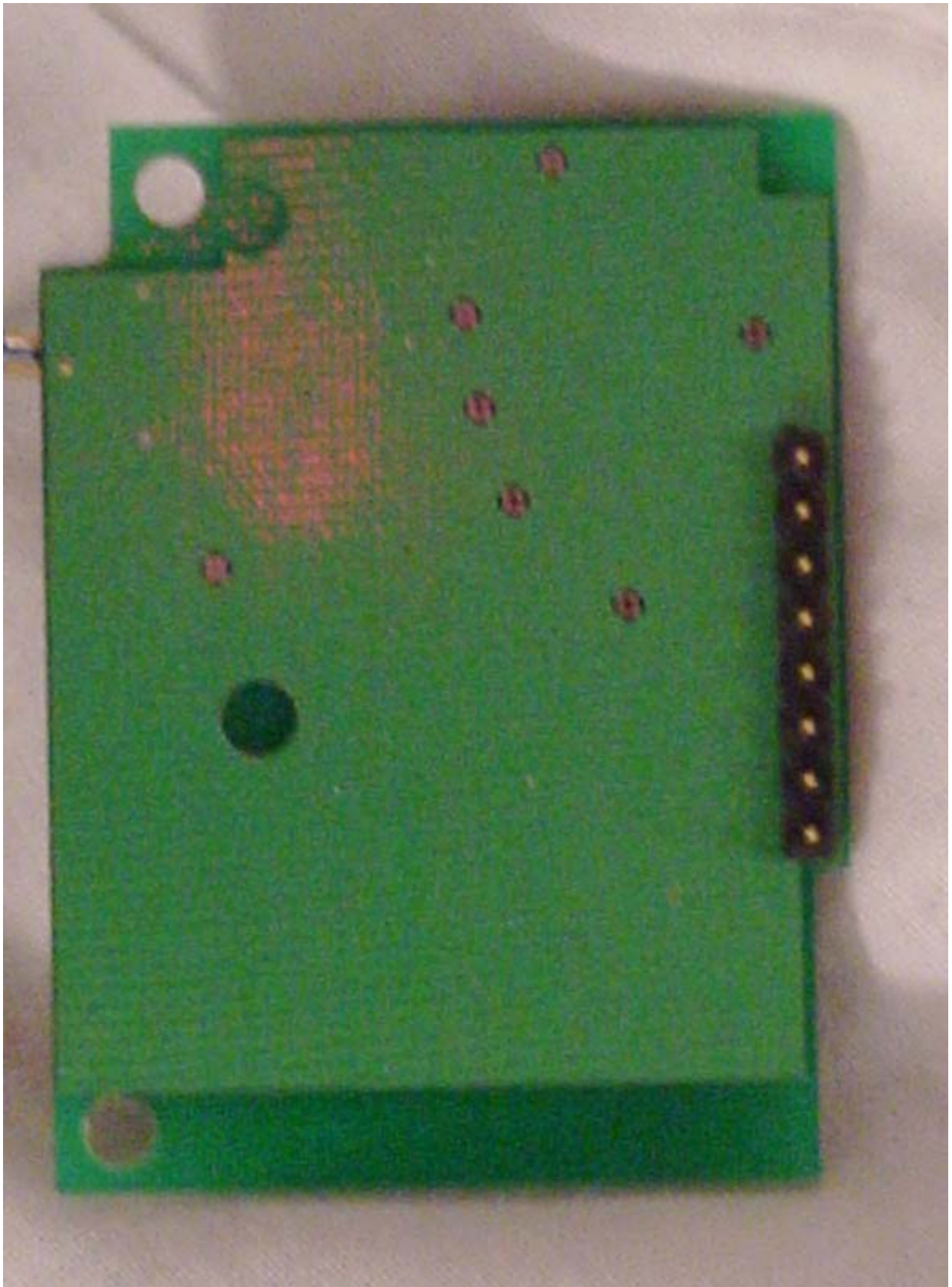


Photo 11. EUT, Laser Alignment Head CPU Board and TX Board Removed



Photo 12. EUT, PSD Board Removed from Laser/Photosensitive Components

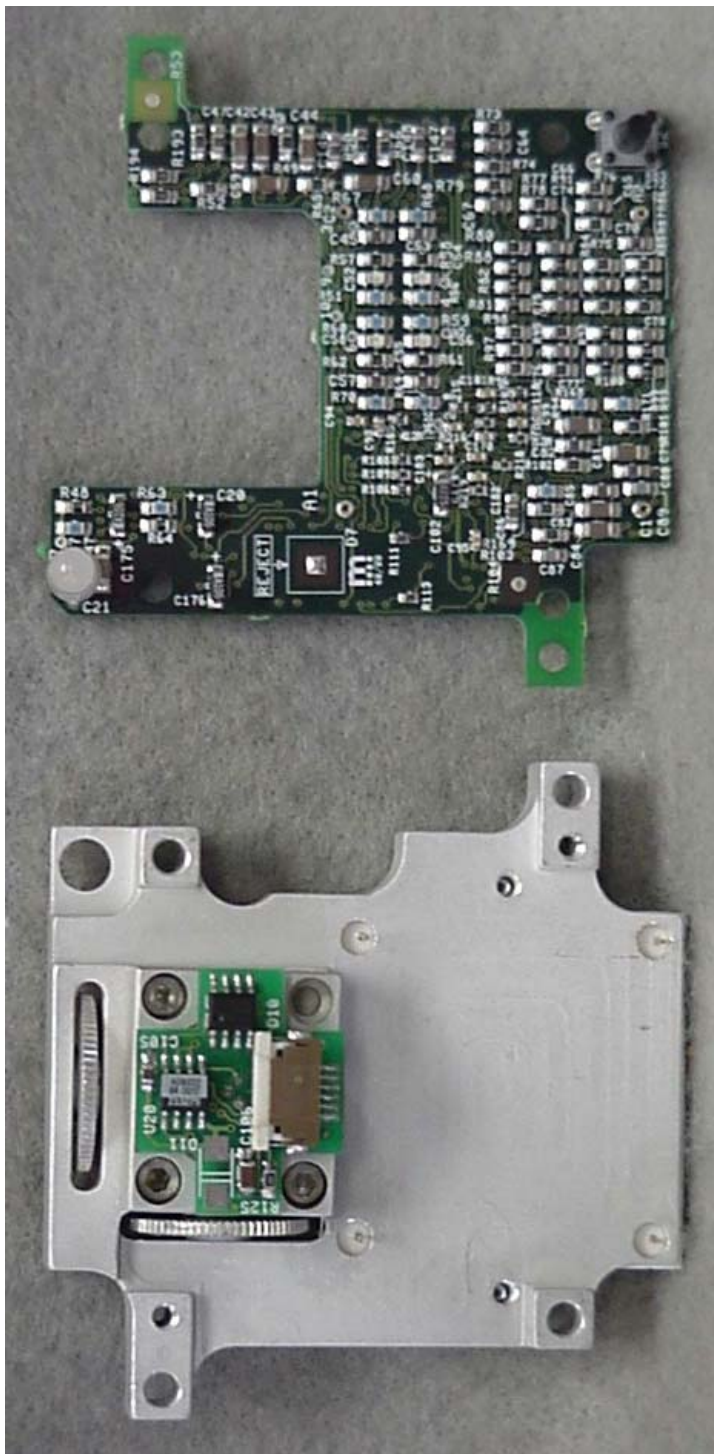




Photo 13. EUT, Top View of PSD Board

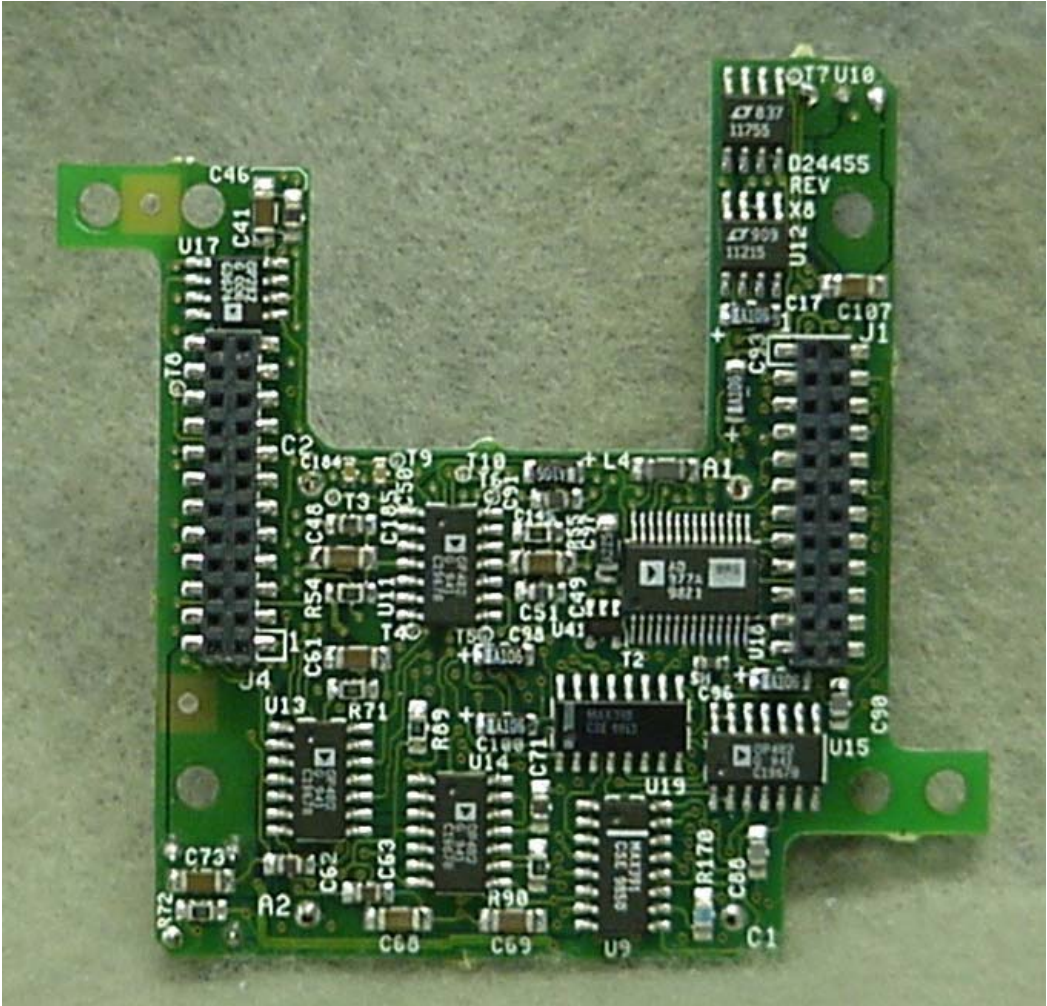


Photo 14 EUT, Bottom View of PSD Board

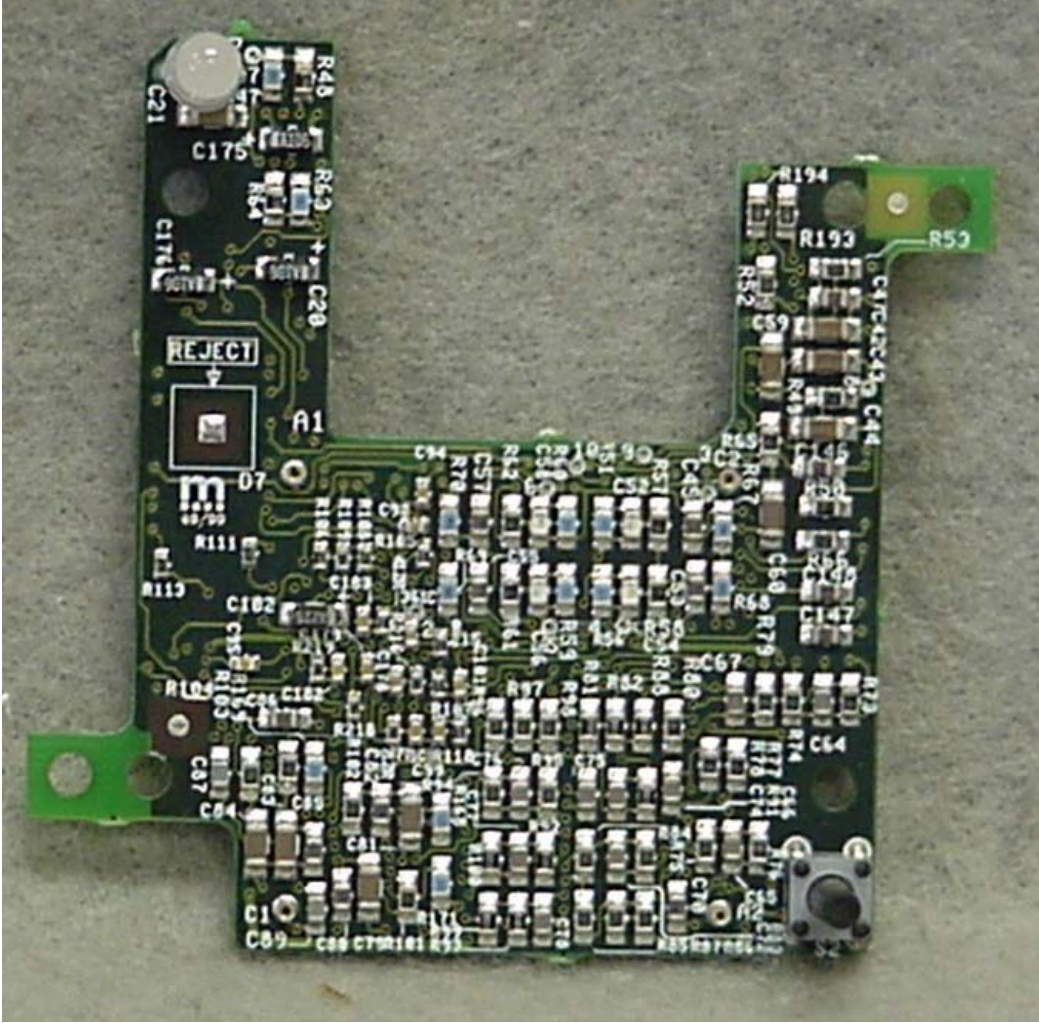


Photo 15. EUT, Top View of LEMO Board



Photo 16. EUT, Bottom View of LEMO Board

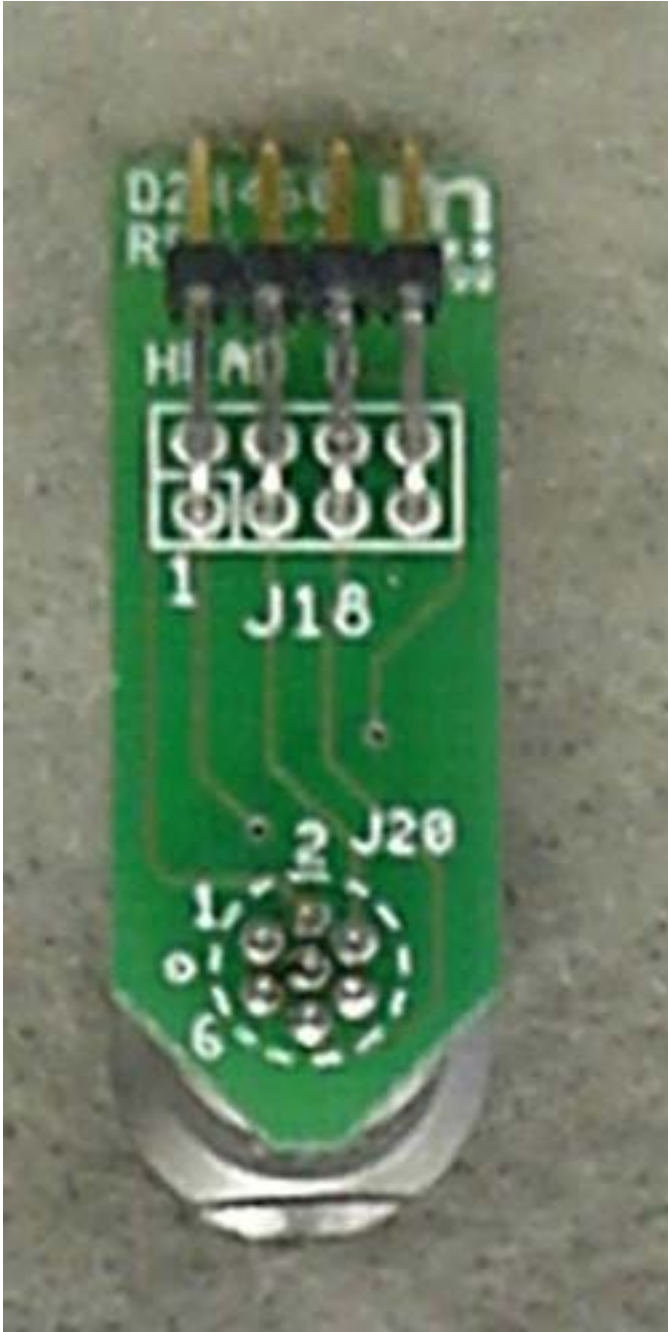


Photo 17. EUT, Top View of Laser Driver Board

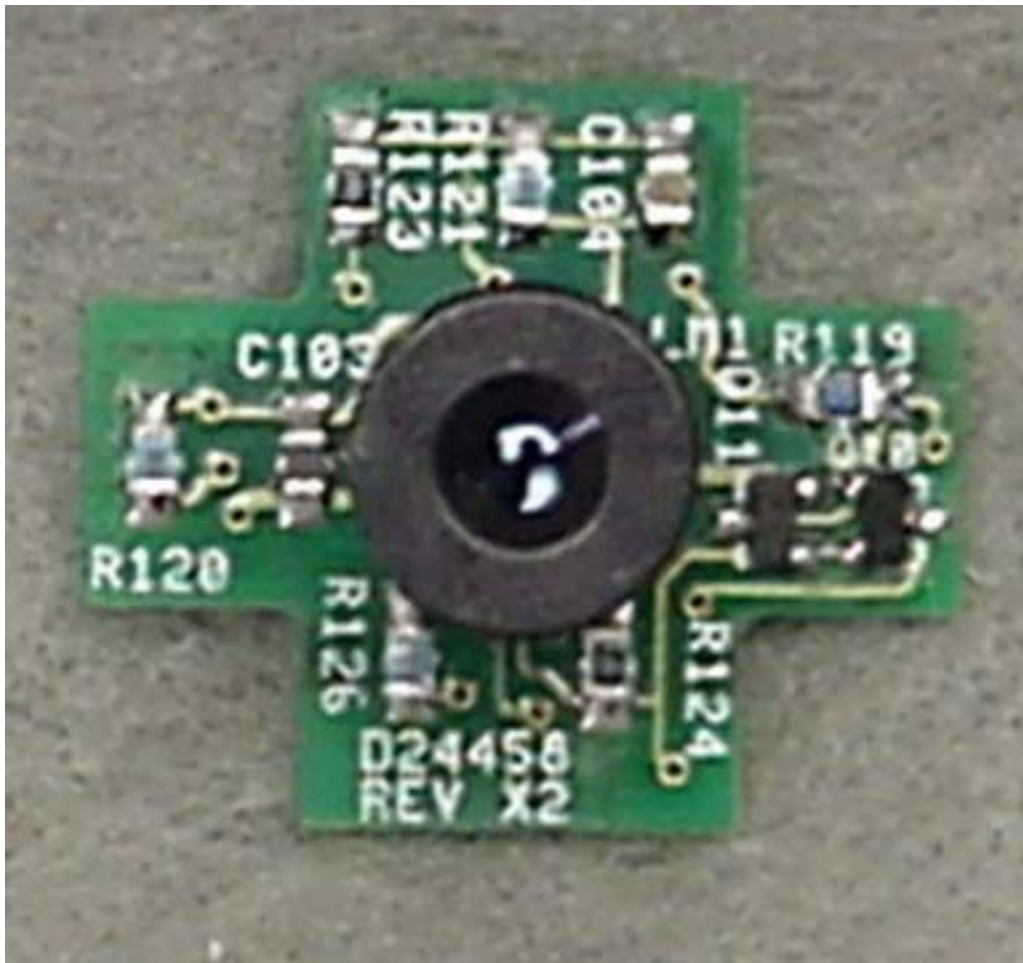


Photo 18. EUT, Bottom View of Laser Driver Board

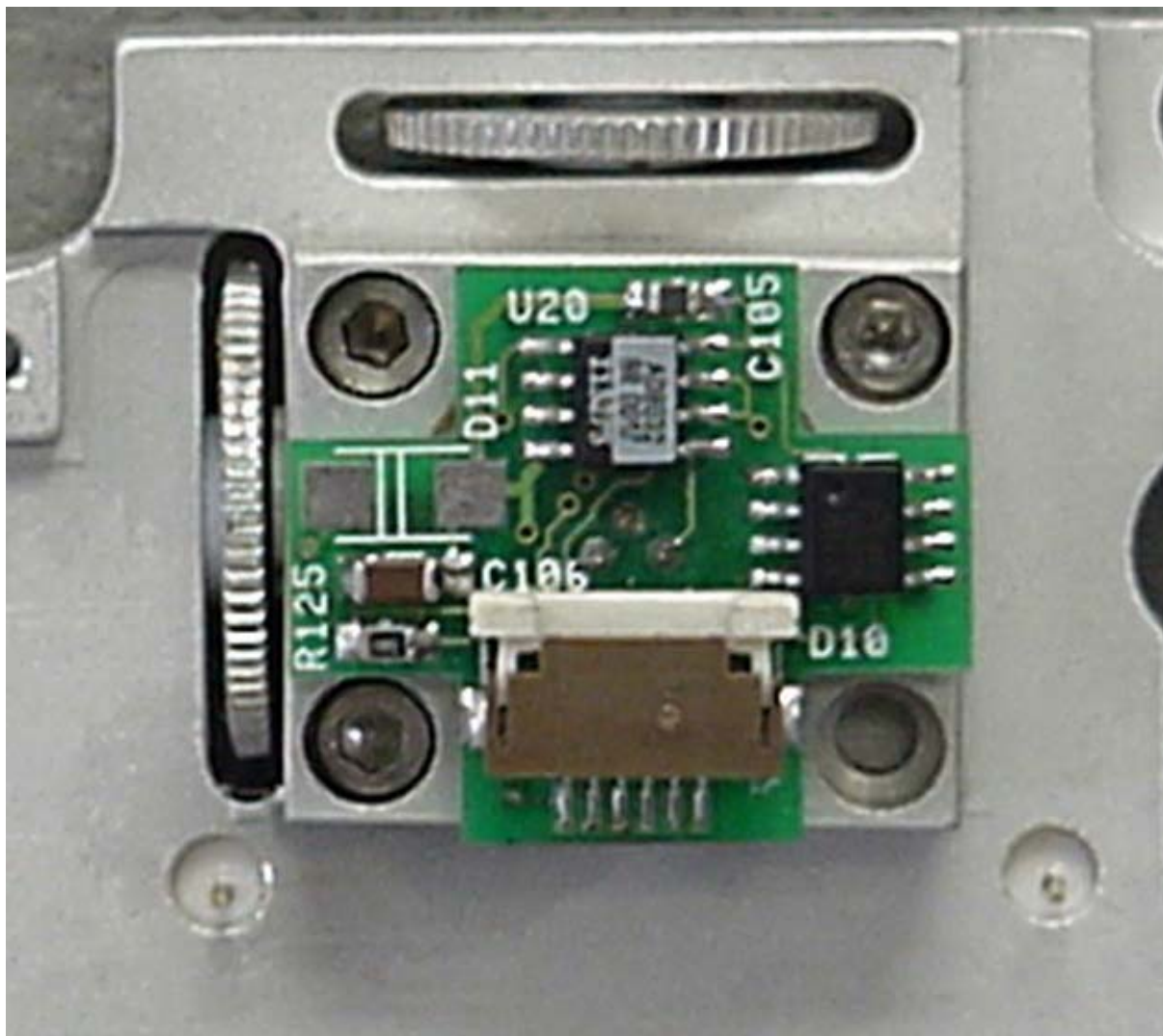


Photo 19. EUT, Top View of Photosensitive Detector

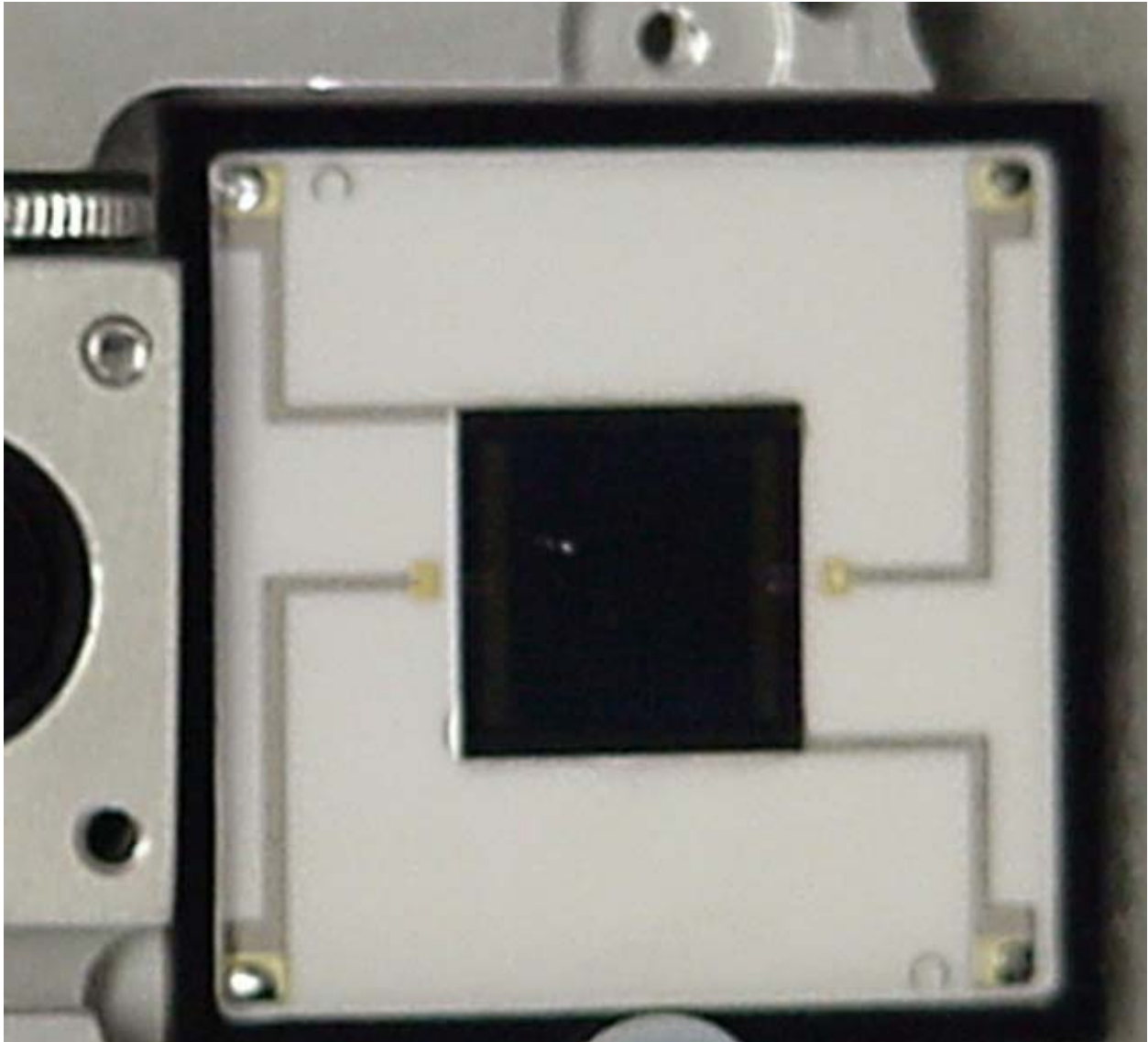


Photo 20. EUT, Bottom View of Photosensitive Detector

