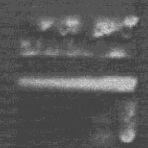


CAUTION

WARNING  
HIGH VOLTAGE  
REMOVE LINE FUSES  
BEFORE SERVICE



CAUTION  
DOUBLE  
POLE/NEUTRAL  
FUSING

COSEL

POWER-GORILLA



POWER  
SUPPLY

YAS505E

100-240V AC  
50-60Hz  
600W/2.7A

AC ~ SAZ  CE

DC --- -V  
+V

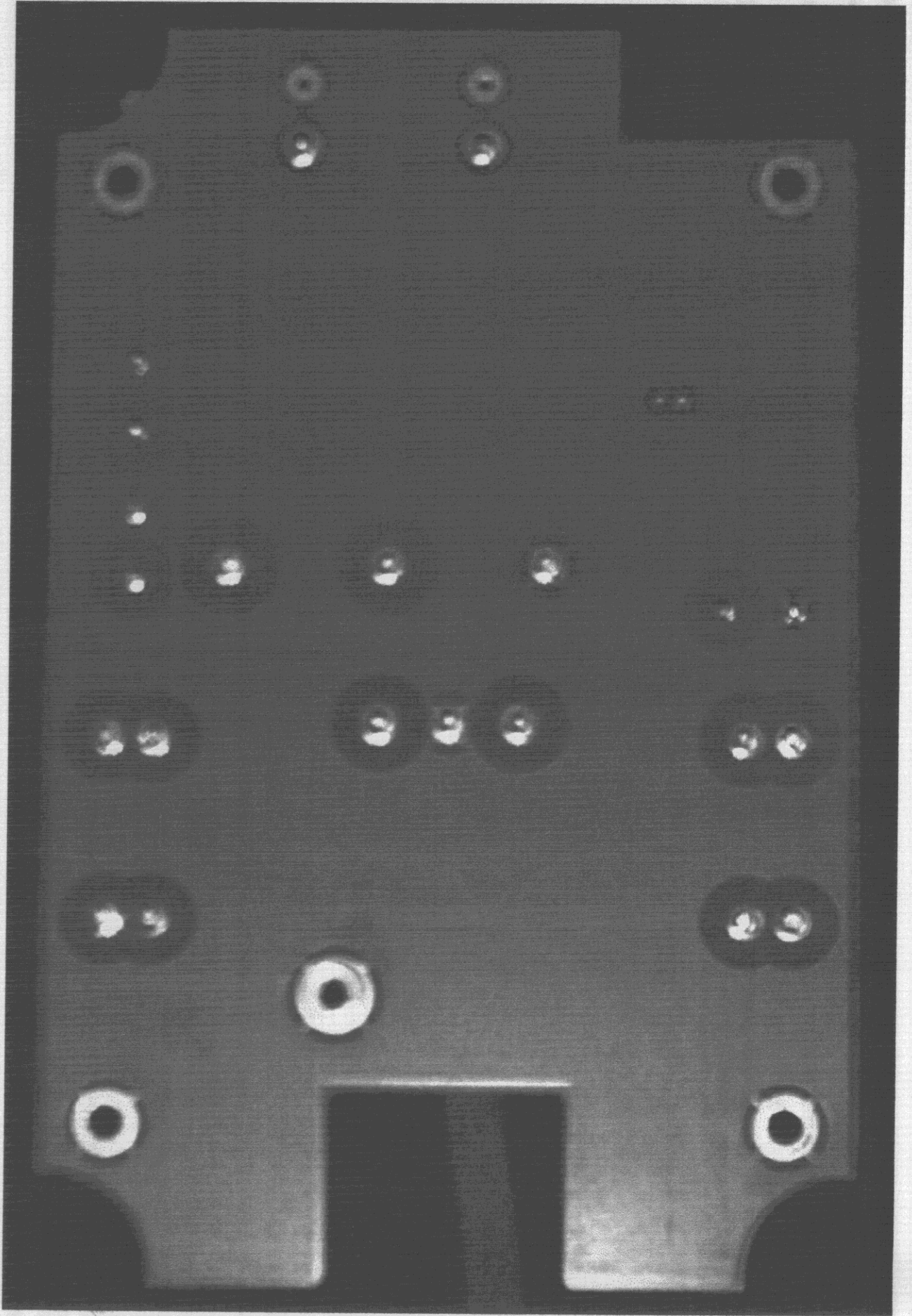
F1

F2

DZ4205 Rev X3, 3-10-98

FCC ID: NL54200

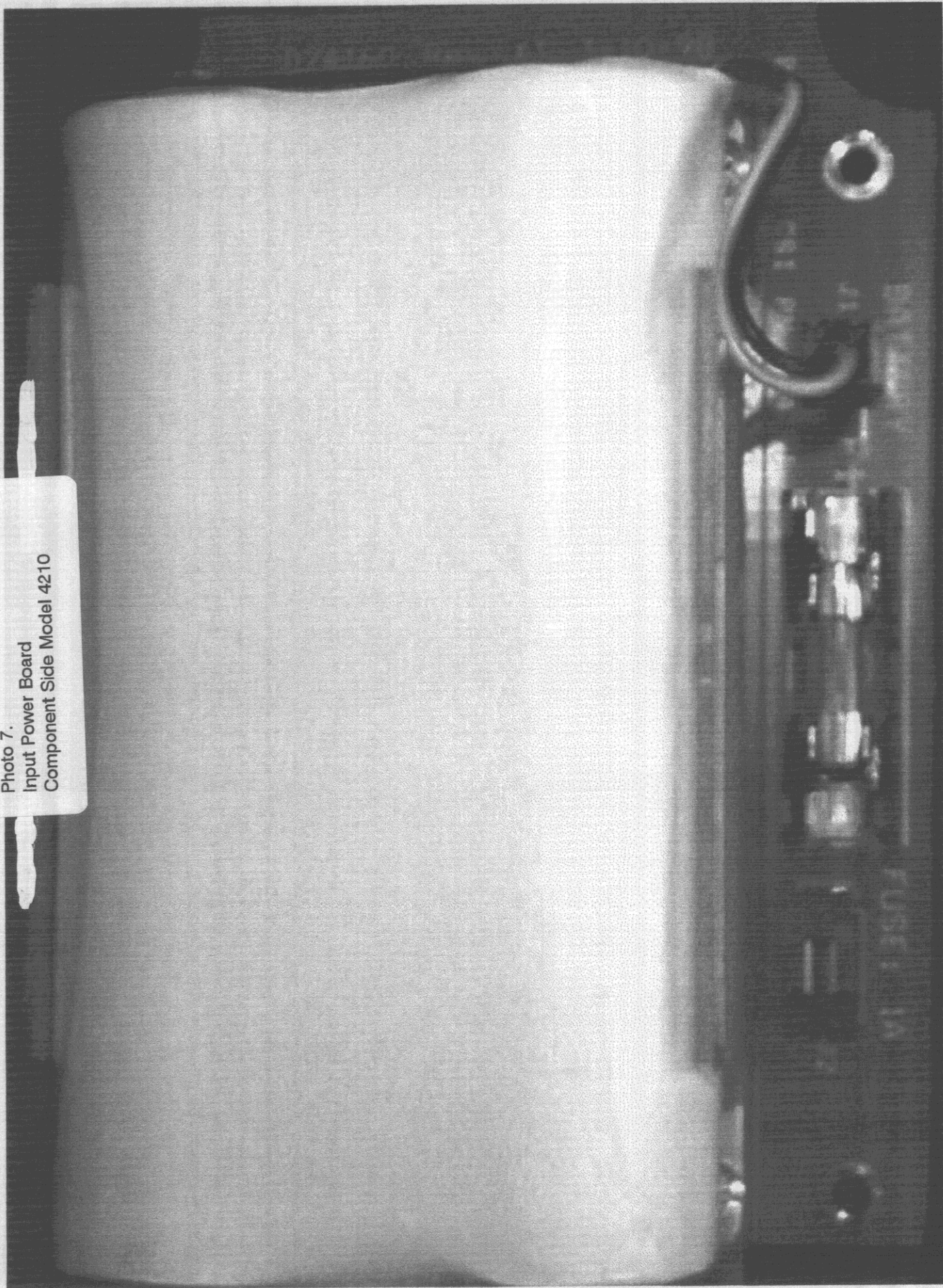
Photo 6. Input Power Board, Solder Side Model 4200



FCC ID: NL54200

Photo 7.

Input Power Board  
Component Side Model 4210



FCC ID: NL54200

Photo 8. Input Power Board, Solder Side Model 4210

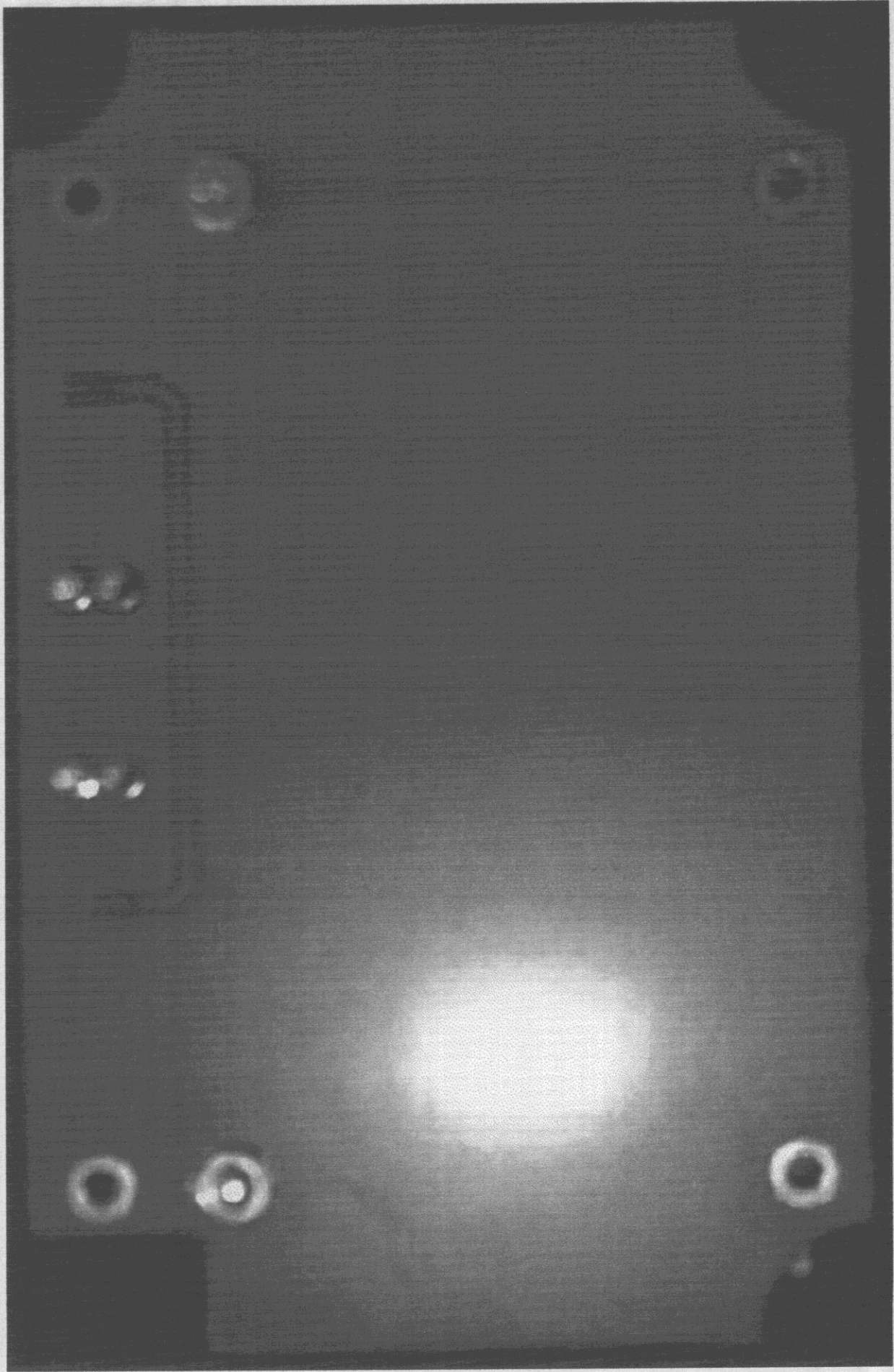


Photo 9. RF Board - Component Side

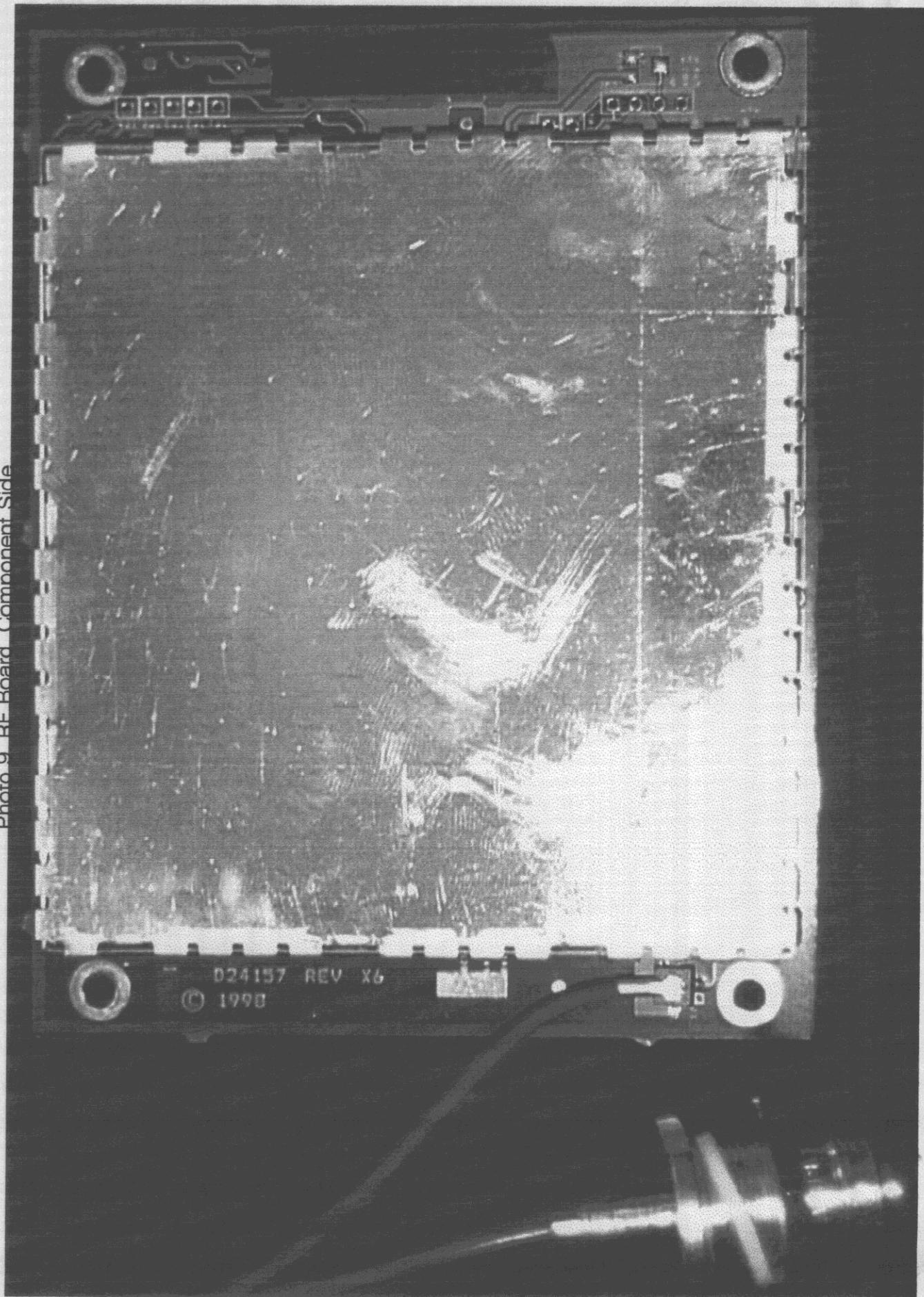


Photo 10. RF Board, Solder Side

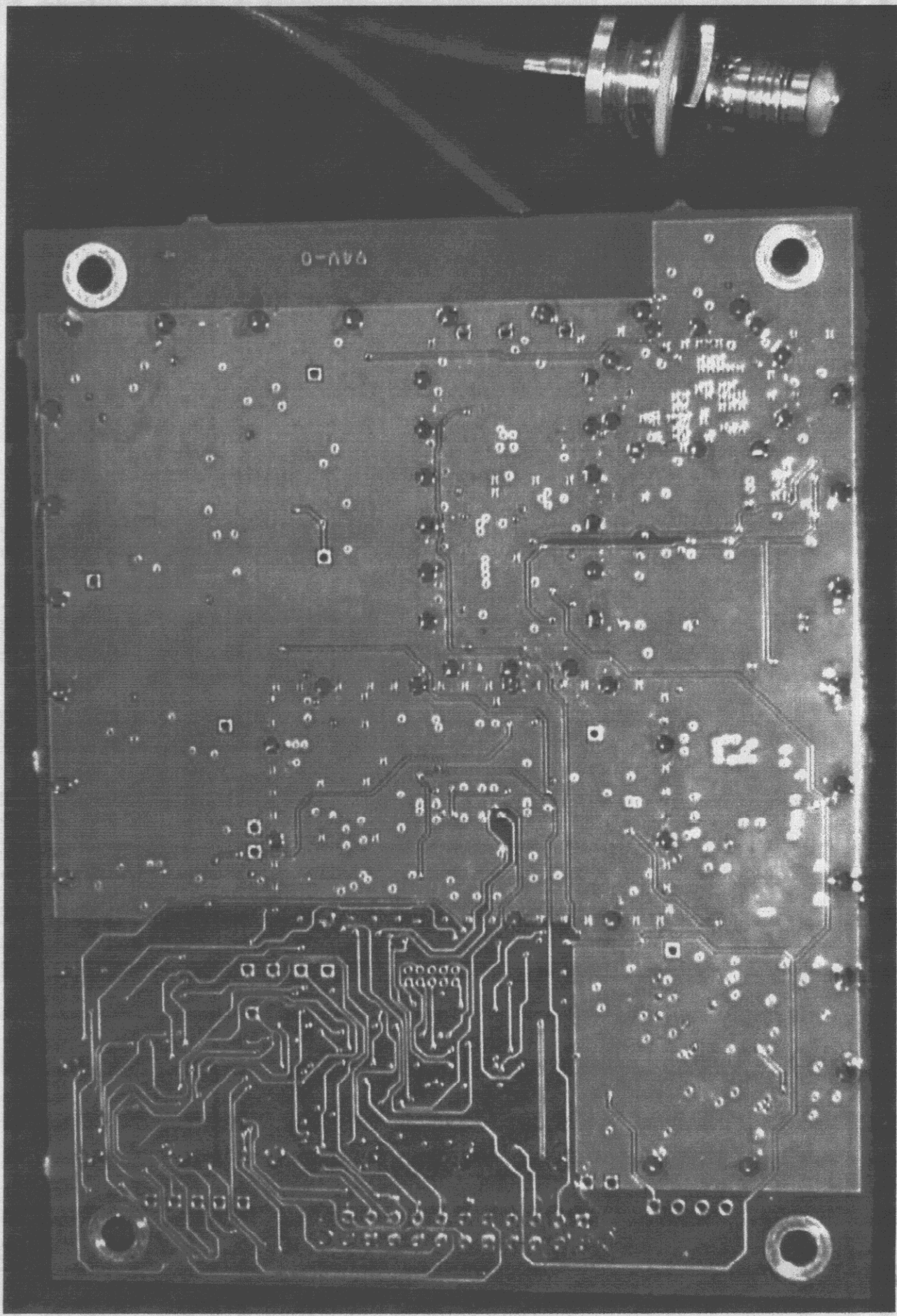




Photo 12. Control Board, Solder Side

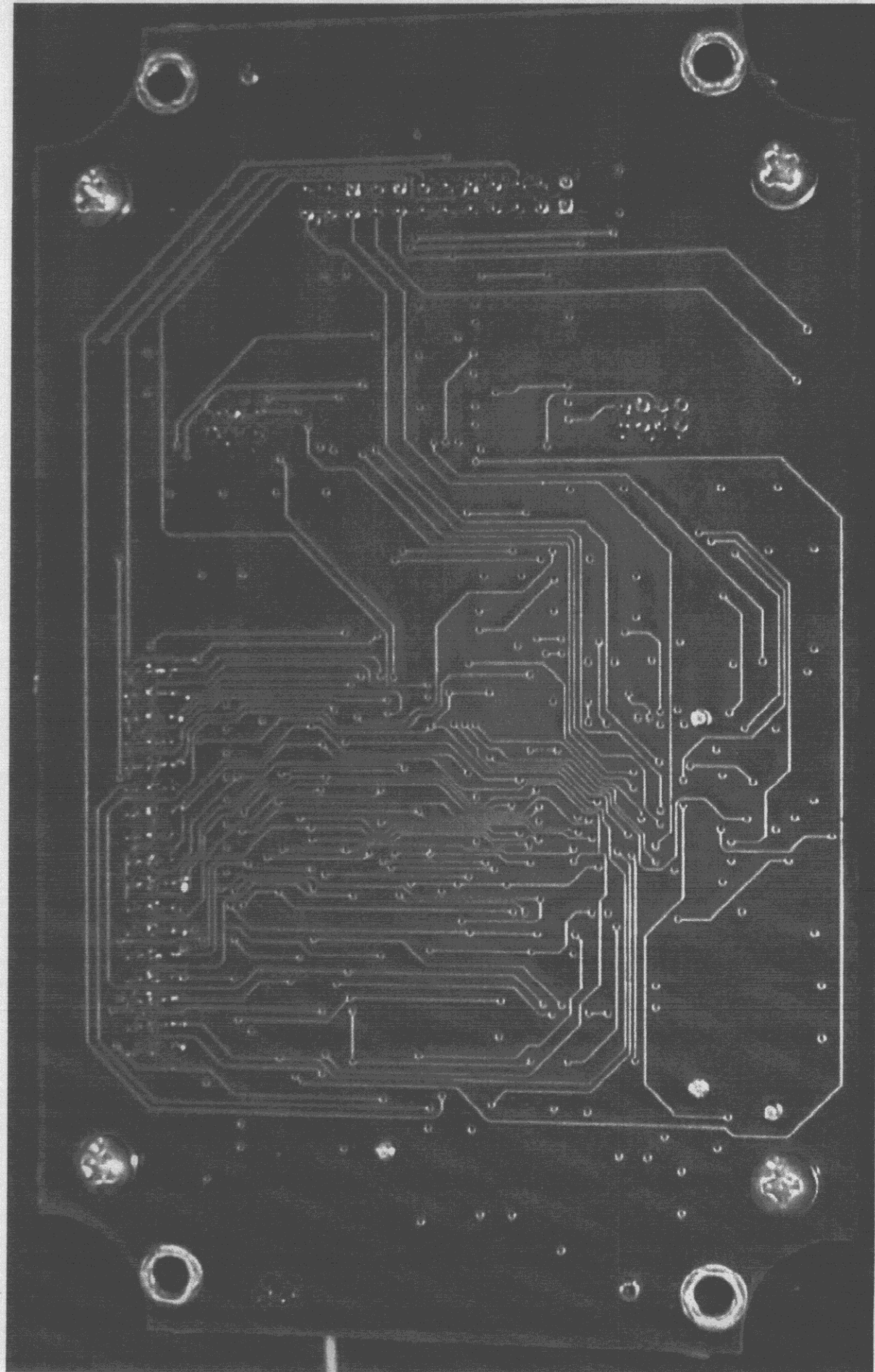
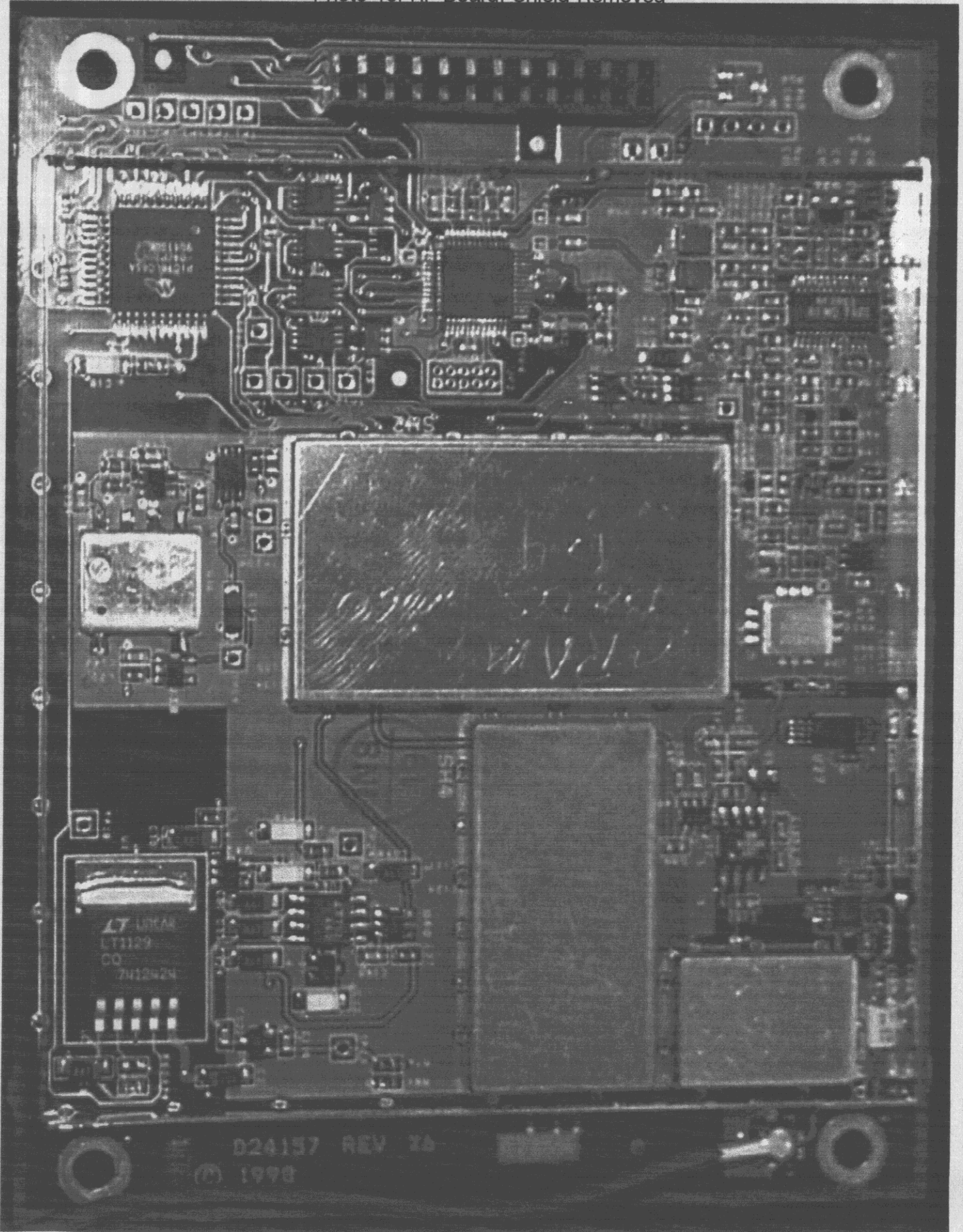




Photo 13. RF Board, Shield Removed



See exhibit  
in Electronic Exhibits for original

