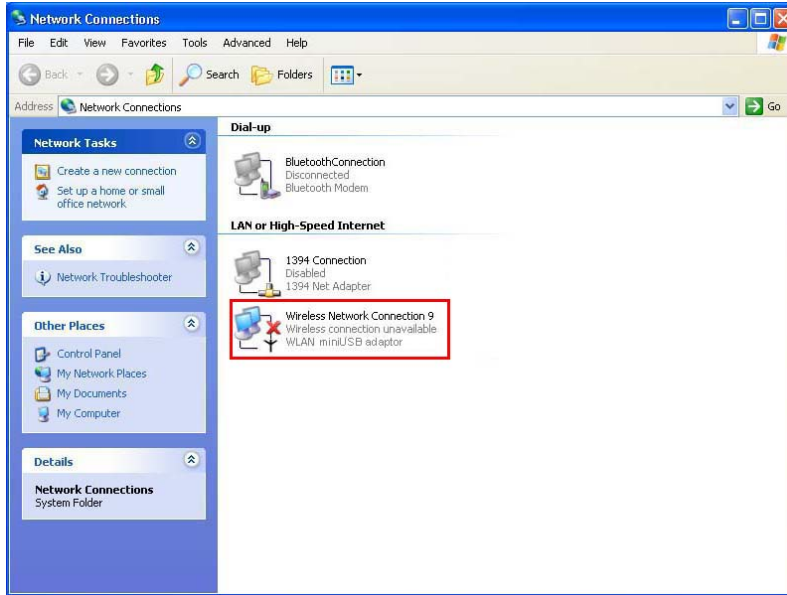




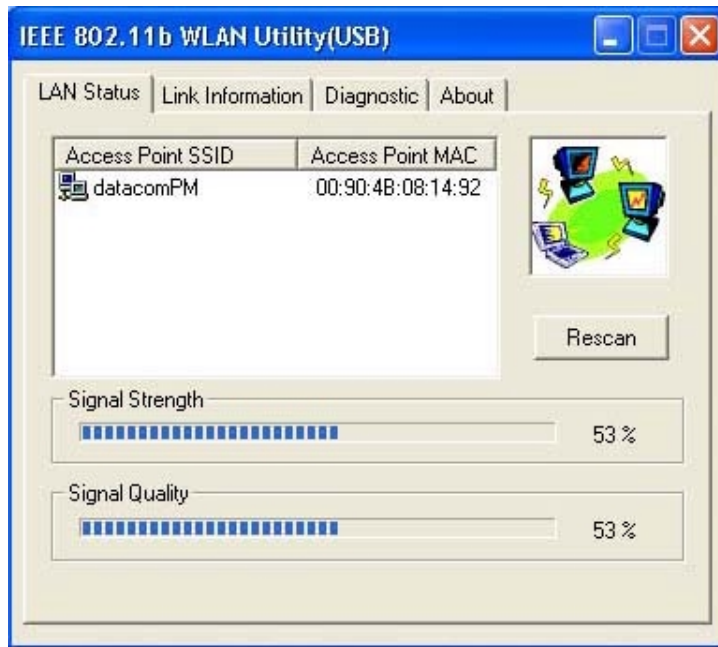
10. **Double click the Windows XP “Wireless Network Connection” icon in Windows System Tray. Or click “Start>Settings>Network Connections”, and double click the Wireless Network Connection of W LAN miniUSB adaptor.**




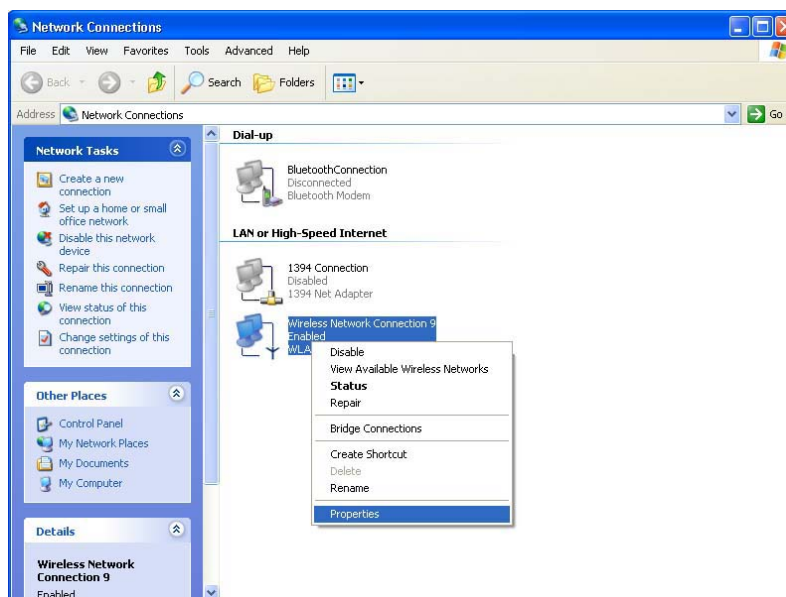
11. From the available networks list, **choose one network** and **enter the network key** (if necessary). **Click “Connect”**.



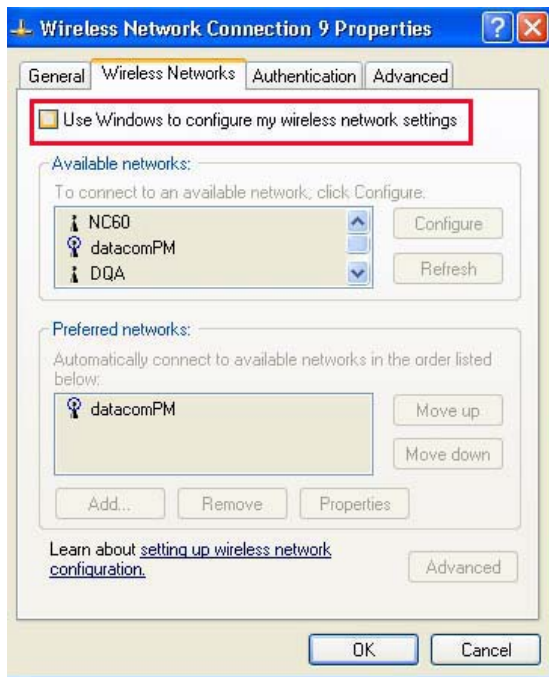
12. The IEEE802.11b WLAN Utility window shows you the signal strength and the quality. The small status icon in Windows System Tray may change its color. Green icon  indicates the presence of a strong connection. Yellow icon  indicates the presence of a low-quality connection.



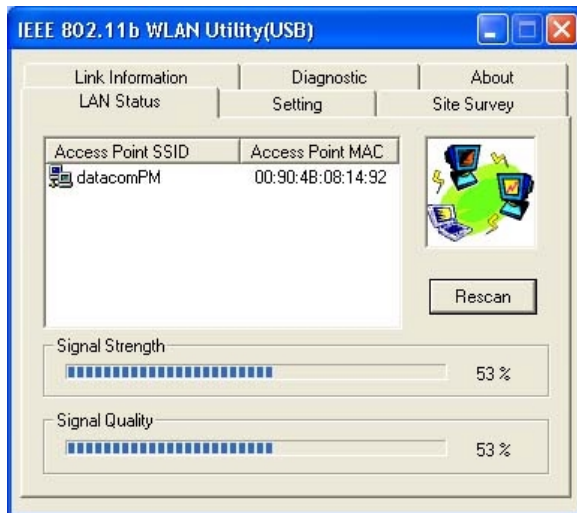
13. Double click the Windows XP “Wireless Network Connection” icon  in Windows System Tray. Or click “Start>Settings>Network Connections”, and right click the Wireless Network Connection of WLAN miniUSB adaptor. Choose Properties.



14. Select “Wireless Networks” tab. Clear the check box of “Use Windows to configure my wireless network settings”. Click “OK”.



15. The IEEE802.11b WLAN Utility window displays 2 more tabs. Choose each tab to view or edit the settings. For details, please read the users manual.



16. Now you may open your browser to access the Internet. Freely without wires



3. Step-by-Step Installation Guide

(Windows XP)

This section will lead you through the installation of USB Card and IEEE802.11b USB WLAN software in details. People who are familiar with the installation and settings of wireless device may refer to quick start guide to establish a network in a snap.

To establish your wireless network connection, the following steps should be executed:

1. Install the software by using the installation CD.
2. Install the USB Wireless LAN Adapter.
3. Install the required network protocols to communicate with your network.

Mostly, you will need to set the TCP / IP protocol.

The product is designed to operate under Windows 98SE, ME, 2000, XP, XP 2nd edition (subject to availability) and Windows CE (subject to availability). The installation procedure is about the same. Please follow up the installation wizard that provided by your system to install the software. The following example is based on Windows XP.