

Test Photos

Photographs of Radiated Emissions Test Configuration

For radiated emissions 30MHz~1GHz

Mode 1 / Mode 4 / Mode 7
for 0°

FRONT VIEW



REAR VIEW



Mode 1 / Mode 4 / Mode 7
for 45°

FRONT VIEW



REAR VIEW

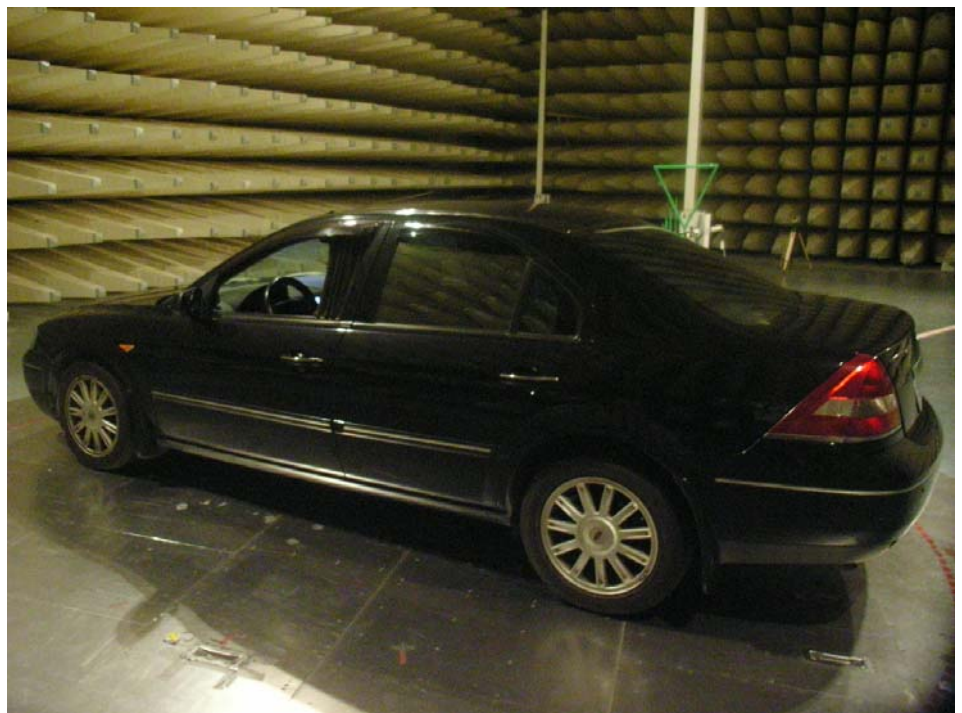


Mode 1 / Mode 4 / Mode 7
for 90°

FRONT VIEW



REAR VIEW



Mode 1 / Mode 4 / Mode 7
for 135°

FRONT VIEW



REAR VIEW



Mode 1 / Mode 4 / Mode 7
for 180°

FRONT VIEW



REAR VIEW



Mode 1 / Mode 4 / Mode 7
for 225°

FRONT VIEW



REAR VIEW



Mode 1 / Mode 4 / Mode 7
for 270°

FRONT VIEW

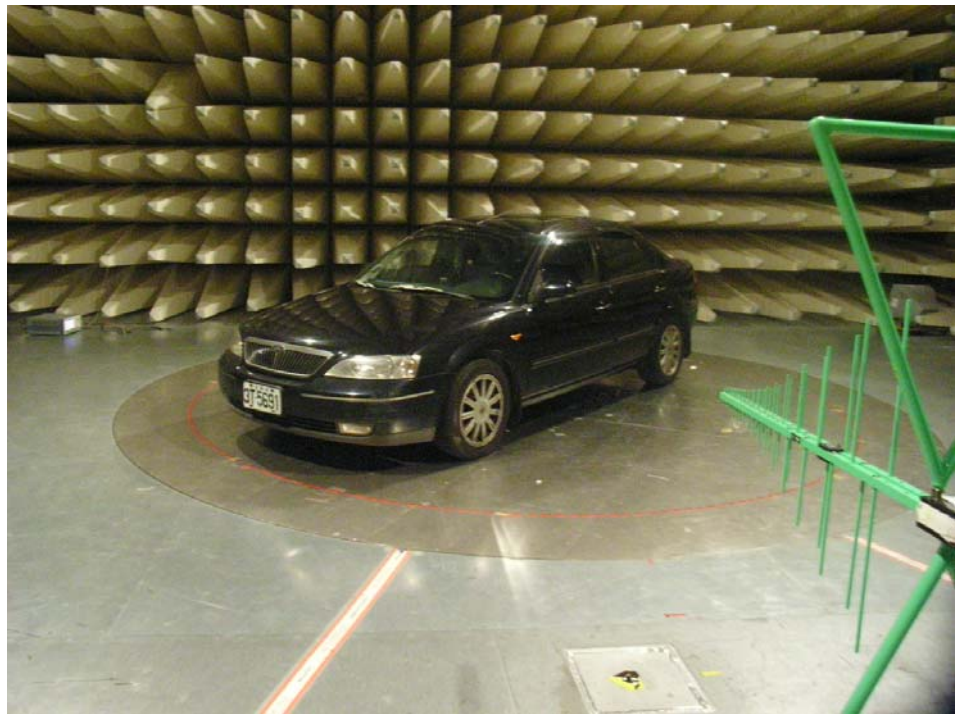


REAR VIEW



Mode 1 / Mode 4 / Mode 7
for 315°

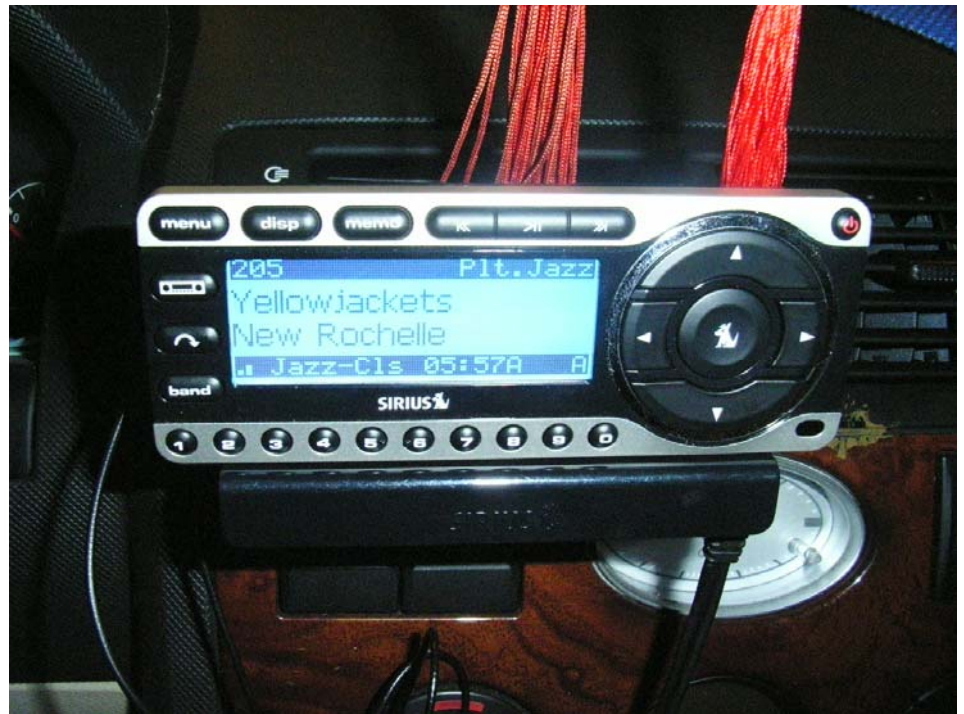
FRONT VIEW



REAR VIEW





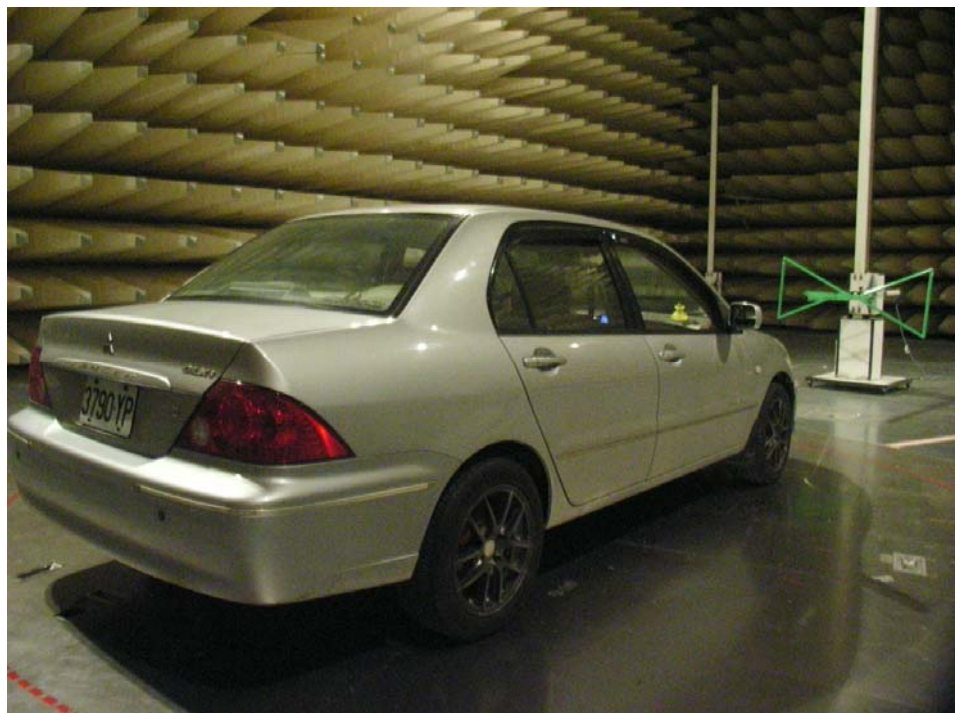


For radiated emissions 30MHz~1GHz
Mode 2 / Mode 5 / Mode 8
for 0°

FRONT VIEW



REAR VIEW



Mode 2 / Mode 5 / Mode 8
for 45°

REAR VIEW



REAR VIEW



Mode 2 / Mode 5 / Mode 8
for 90°

REAR VIEW

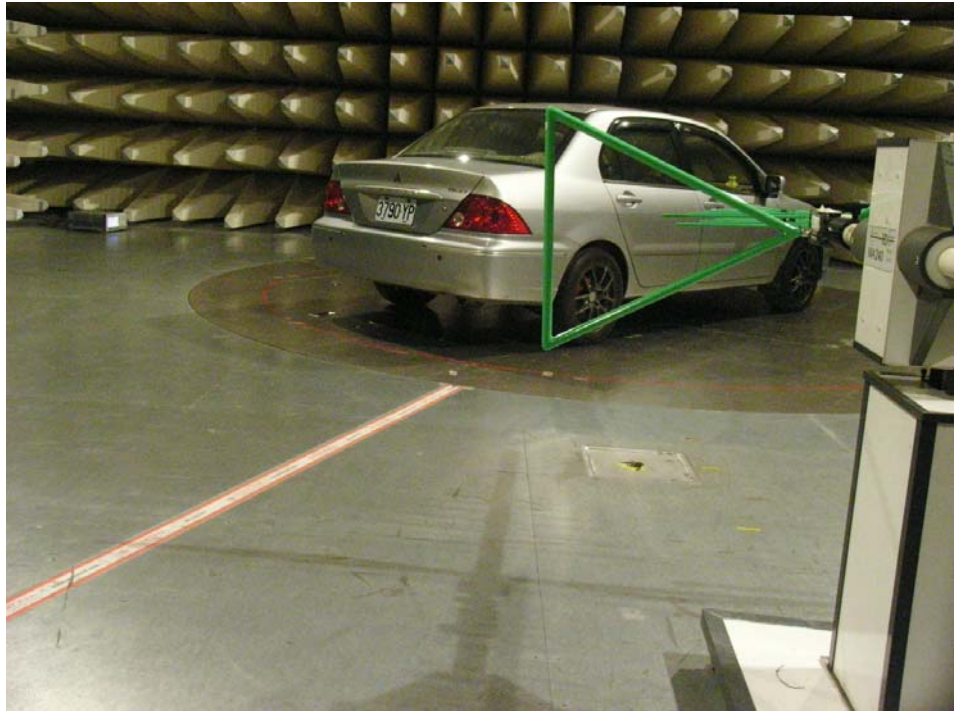


REAR VIEW



Mode 2 / Mode 5 / Mode 8
for 135°

REAR VIEW



REAR VIEW



Mode 2 / Mode 5 / Mode 8
for 180°

REAR VIEW



REAR VIEW



Mode 2 / Mode 5 / Mode 8
for 225°

REAR VIEW



REAR VIEW



Mode 2 / Mode 5 / Mode 8
for 270°

REAR VIEW



REAR VIEW



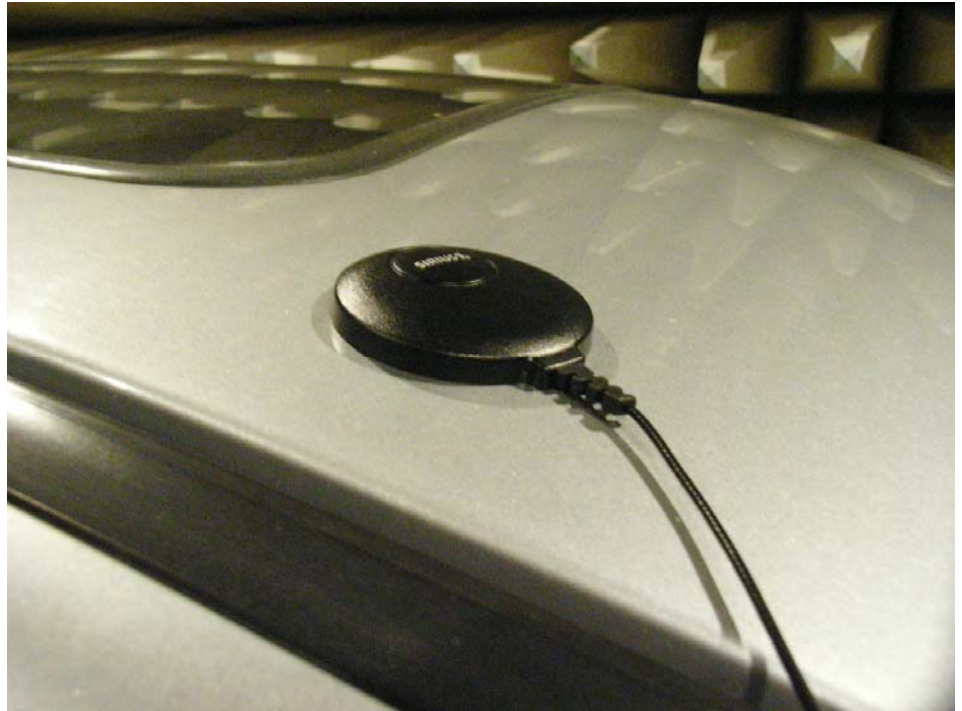
Mode 2 / Mode 5 / Mode 8
for 315°

REAR VIEW



REAR VIEW







For radiated emissions 30MHz~1GHz
Mode 3 / Mode 6 / Mode 9
for 0°

FRONT VIEW



REAR VIEW



Mode 3 / Mode 6 / Mode 9
for 45°

REAR VIEW



REAR VIEW



Mode 3 / Mode 6 / Mode 9
for 90°

REAR VIEW



REAR VIEW



Mode 3 / Mode 6 / Mode 9
for 135°

REAR VIEW



REAR VIEW



Mode 3 / Mode 6 / Mode 9
for 180°

REAR VIEW



REAR VIEW



Mode 3 / Mode 6 / Mode 9
for 225°

REAR VIEW



REAR VIEW



Mode 3 / Mode 6 / Mode 9
for 270°

REAR VIEW



REAR VIEW



Mode 3 / Mode 6 / Mode 9
for 315°

REAR VIEW



REAR VIEW





