

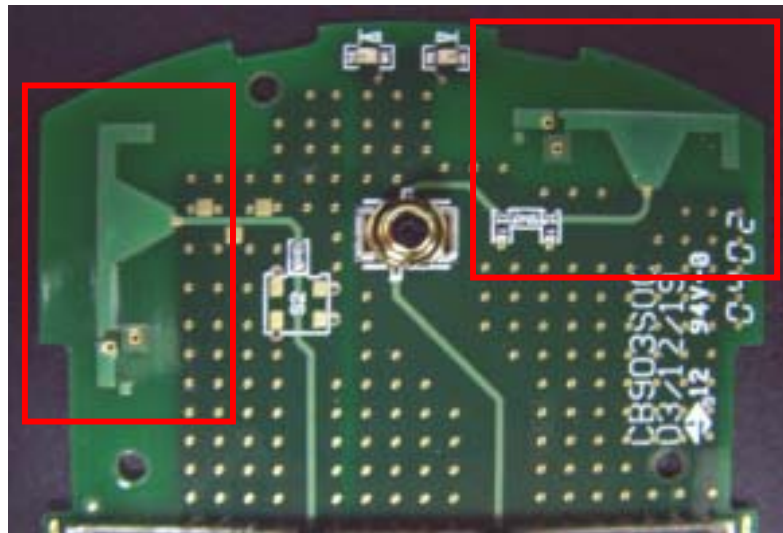
Antenna report for FCC/CE Regulation

Left ANT :

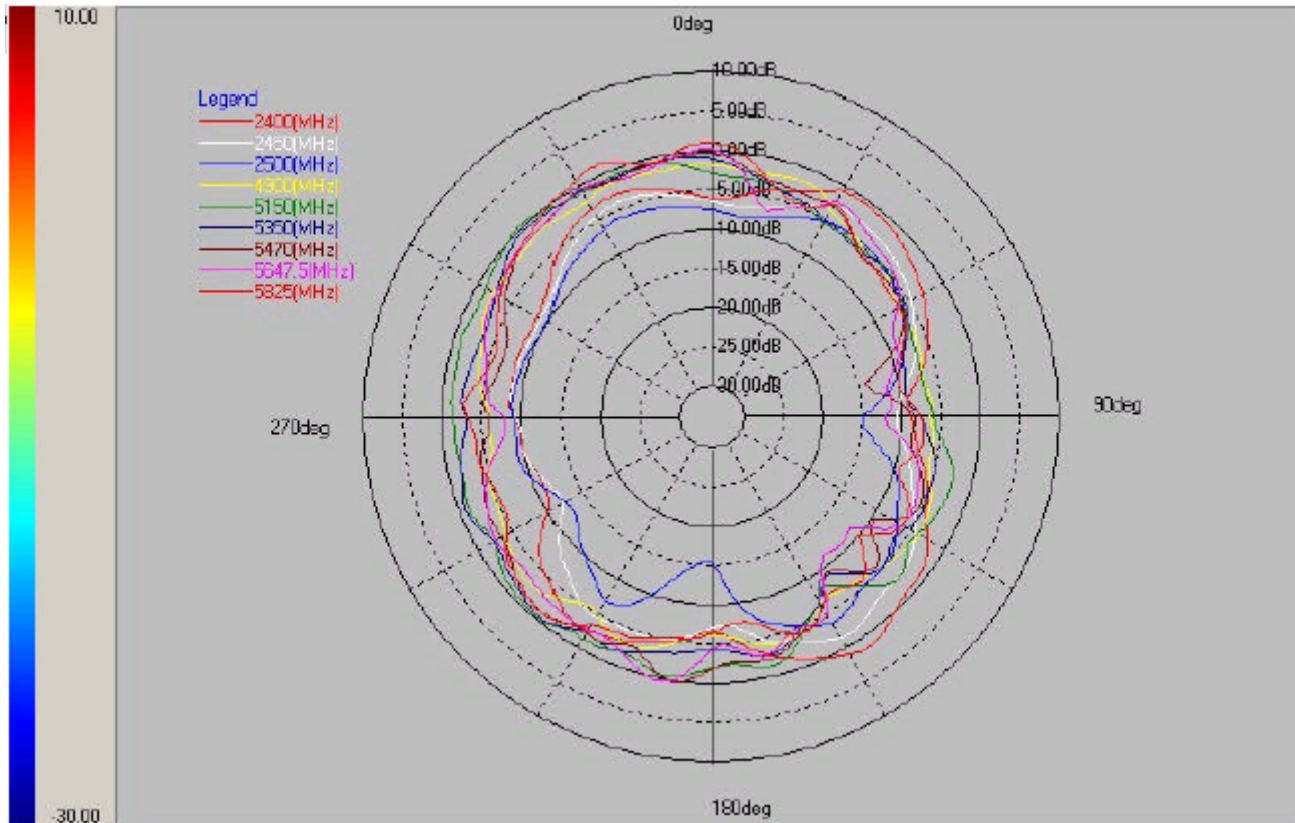
Dual band printed IFA type

Right ANT :

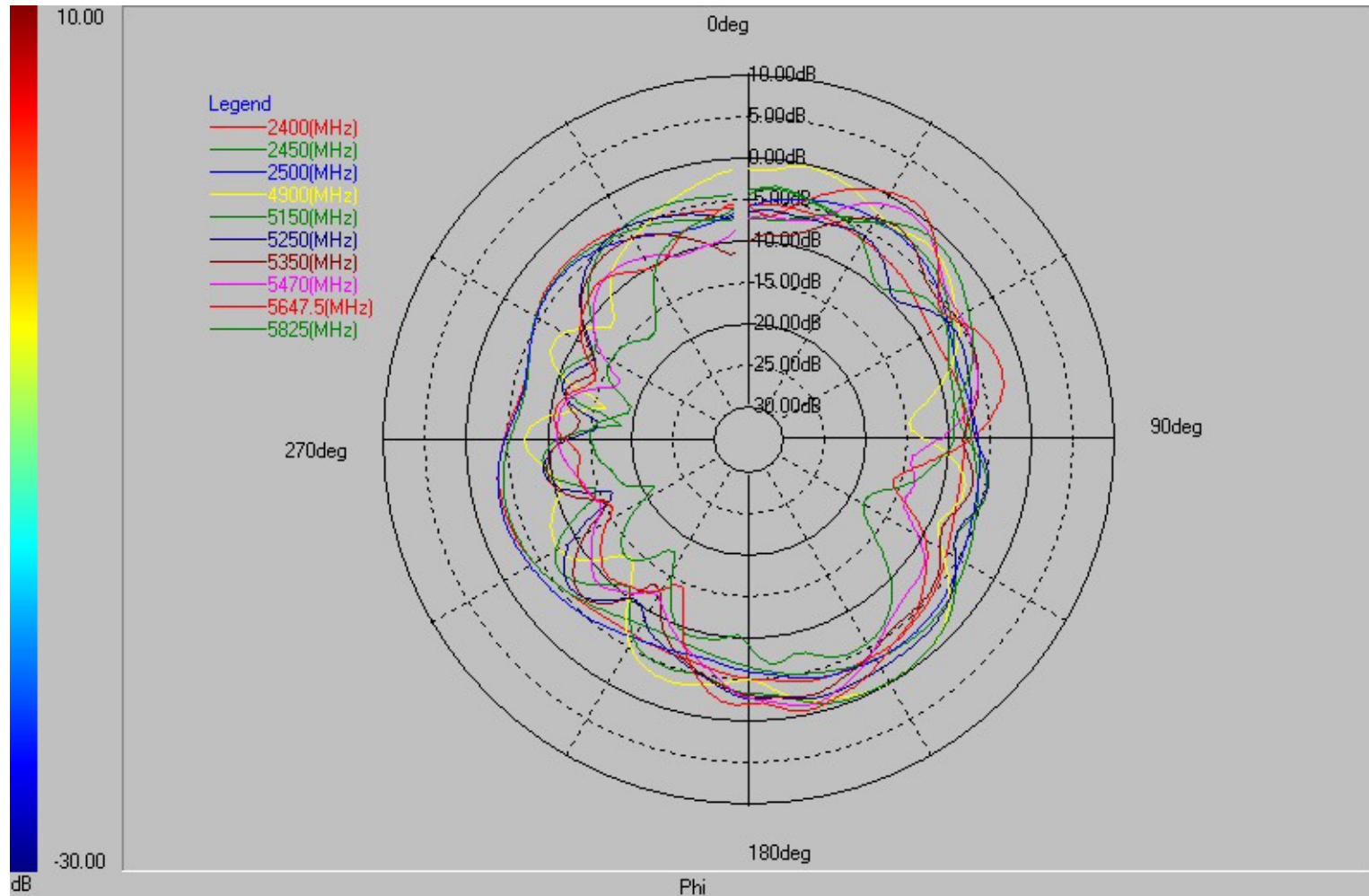
Dual band printed IFA type



Right Antenna Radiation Pattern



Left Antenna Radiation Pattern



Gain Table

Left Antenna

Layer	Max value	Position	Min value	Position	Average
2400 (MHz)	-3.43 dB	254.99 deg	-8.62 dB	63.00 deg	-5.66 dB
2450 (MHz)	-2.90 dB	135.00 deg	-8.50 dB	203.99 deg	-5.39 dB
2500 (MHz)	-3.09 dB	251.99 deg	-7.97 dB	345.02 deg	-5.11 dB
4900 (MHz)	-0.19 dB	149.99 deg	-16.57 dB	282.01 deg	-5.36 dB
5150 (MHz)	-0.22 dB	149.99 deg	-18.67 dB	275.99 deg	-5.91 dB
5250 (MHz)	-1.79 dB	161.99 deg	-16.49 dB	248.97 deg	-6.36 dB
5350 (MHz)	-2.30 dB	165.00 deg	-15.62 dB	246.00 deg	-7.00 dB
5470 (MHz)	-0.74 dB	36.01 deg	-17.18 dB	293.99 deg	-7.46 dB
5647.5 (MHz)	0.65 dB	35.99 deg	-15.94 dB	105.00 deg	-6.50 dB
5825 (MHz)	-1.32 dB	44.98 deg	-21.32 dB	242.99 deg	-9.22 dB

Right Antenna

Layer	Max value	Position	Min value	Position	Average
2400 (MHz)	1.50 dB	147.00 deg	-11.17 dB	-111.03 deg	-4.47 dB
2450 (MHz)	-1.20 dB	147.00 deg	-12.23 dB	-117.01 deg	-6.06 dB
2500 (MHz)	-3.65 dB	147.00 deg	-15.75 dB	-176.99 deg	-8.16 dB
4900 (MHz)	-1.79 dB	-24.00 deg	-6.95 dB	78.01 deg	-4.16 dB
5150 (MHz)	0.15 dB	-45.00 deg	-8.41 dB	147.00 deg	-2.66 dB
5350 (MHz)	-0.52 dB	-141.00 deg	-9.35 dB	83.99 deg	-3.47 dB
5470 (MHz)	0.05 dB	-171.00 deg	-14.20 dB	78.01 deg	-3.99 dB
5647.5 (MHz)	0.28 dB	-168.00 deg	-12.15 dB	90.00 deg	-4.24 dB
5825 (MHz)	1.06 dB	-27.00 deg	-10.09 dB	81.00 deg	-4.12 dB