

Test Laboratory: Compliance Certification Services  
File Name: D2450V2 SN 706\_13.1 mW.da4

**DUT: Dipole Type & Serial Number: D2450V2 SN 706**

**Program: System Validation (ET3DV6 SN 1577); I/P Power 250 mW, Air temp. 25 deg C, liquid temp. 23 deg C**

Communication System: CW - 2450 MHz; Frequency: 2450 MHz; Duty Cycle: 1:1  
Medium: Head 2450 MHz ( $\sigma = 1.8577$  mho/m,  $\epsilon = 38.64$ ,  $\rho = 1000$  kg/m<sup>3</sup>)  
Phantom section: FlatSection

DASY4 Configuration:

- Probe: ET3DV6 - SN1577; ConvF(5.1, 5.1, 5.1); Calibrated: 2/7/2003
- Sensor-Surface: 4mm (Mechanical Surface Detection)
- Electronics: DAE3 Sn427; Calibrated: 2/4/2003
- Phantom: SAM 1 - TP:1185
- Software: DASY4, V4.0 Build 51

**Zoom Scan (5x5x7)/Cube 0:** Measurement grid: dx=7.5mm, dy=7.5mm

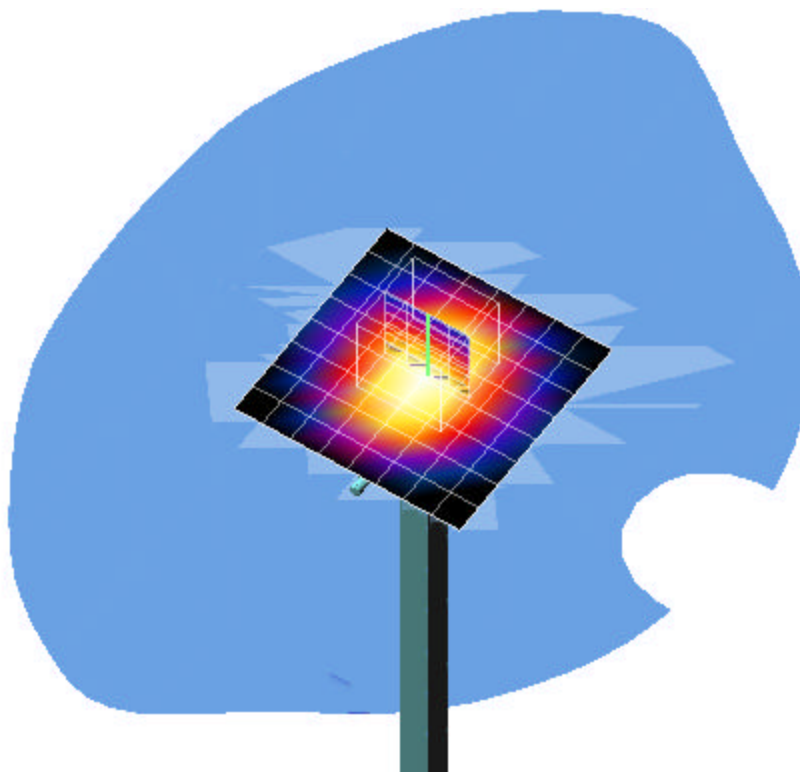
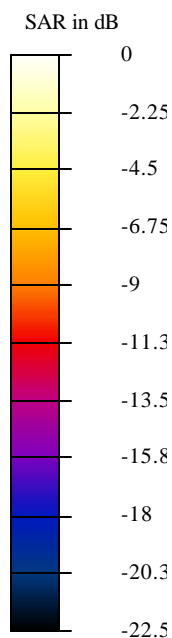
Reference Value = 94.5 V/m

Peak SAR = 28 mW/g

SAR(1 g) = 13.1 mW/g; SAR(10 g) = 5.84 mW/g

Power Drift = -0.006 dB

**Area Scan (9x9x1):** Measurement grid: dx=10mm, dy=10mm



Test Laboratory: Compliance Certification Services  
File Name: D2450V2 SN 706\_13 mW.da4

**DUT: Dipole Type & Serial Number: D2450V2 SN 706**

**Program: System Validation (ET3DV6 SN 1577); I/P Power 250 mW, Air temp. 25 deg C, liquid temp. 23 deg C**

Communication System: CW - 2450 MHz; Frequency: 2450 MHz; Duty Cycle: 1:1  
Medium: Head 2450 MHz ( $\sigma = 1.8536$  mho/m,  $\epsilon = 38.52$ ,  $\rho = 1000$  kg/m<sup>3</sup>)  
Phantom section: FlatSection

DASY4 Configuration:

- Probe: ET3DV6 - SN1577; ConvF(5.1, 5.1, 5.1); Calibrated: 2/7/2003
- Sensor-Surface: 4mm (Mechanical Surface Detection)
- Electronics: DAE3 Sn427; Calibrated: 2/4/2003
- Phantom: SAM 1 - TP:1185
- Software: DASY4, V4.0 Build 51

**Zoom Scan (5x5x7)/Cube 0:** Measurement grid: dx=7.5mm, dy=7.5mm

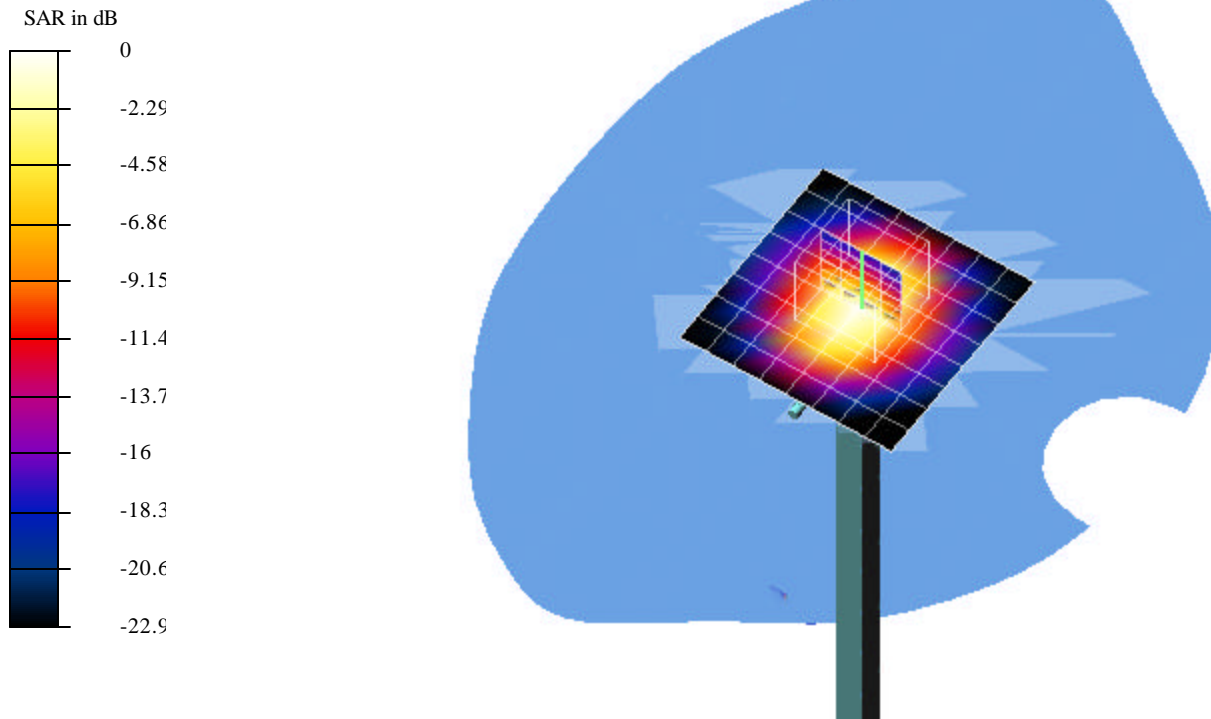
Reference Value = 94.4 V/m

Peak SAR = 27.9 mW/g

SAR(1 g) = 13mW/g; SAR(10 g) = 5.76 mW/g

Power Drift = -0.03 dB

**Area Scan (9x9x1):** Measurement grid: dx=10mm, dy=10mm



Test Laboratory: Compliance Certification Services  
File Name: D2450V2 SN 706\_12.9 mW.da4

**DUT: Dipole Type & Serial Number: D2450V2 SN 706**

**Program: System Validation (ET3DV6 SN 1577); I/P Power 250 mW, Air temp. 25 deg C, liquid temp. 23 deg C**

Communication System: CW - 2450 MHz; Frequency: 2450 MHz; Duty Cycle: 1:1

Medium: Head 2450 MHz ( $\sigma = 1.8673$  mho/m,  $\epsilon = 38.32$ ,  $\rho = 1000$  kg/m<sup>3</sup>)

Phantom section: FlatSection

DASY4 Configuration:

- Probe: ET3DV6 - SN1577; ConvF(5.1, 5.1, 5.1); Calibrated: 2/7/2003

- Sensor-Surface: 4mm (Mechanical Surface Detection)

- Electronics: DAE3 Sn427; Calibrated: 2/4/2003

- Phantom: SAM 1 - TP:1185

- Software: DASY4, V4.0 Build 51

**Zoom Scan (5x5x7)/Cube 0:** Measurement grid: dx=7.5mm, dy=7.5mm

Reference Value = 93.6 V/m

Peak SAR = 27.6 mW/g

SAR(1 g) = 12.9 mW/g; SAR(10 g) = 5.74 mW/g

Power Drift = -0.001 dB

**Area Scan (9x9x1):** Measurement grid: dx=10mm, dy=10mm

