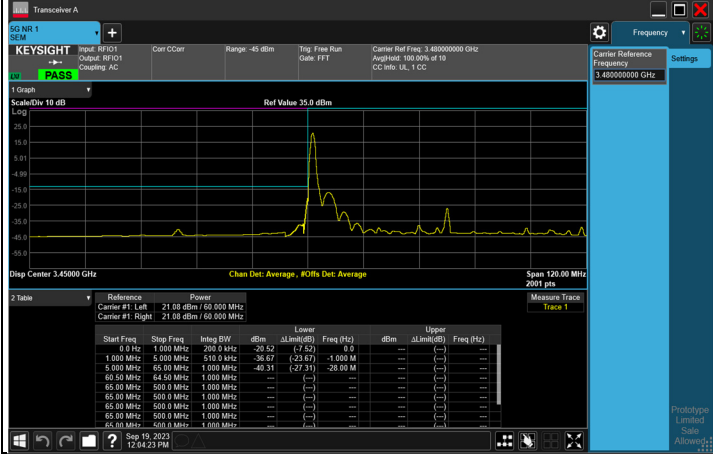




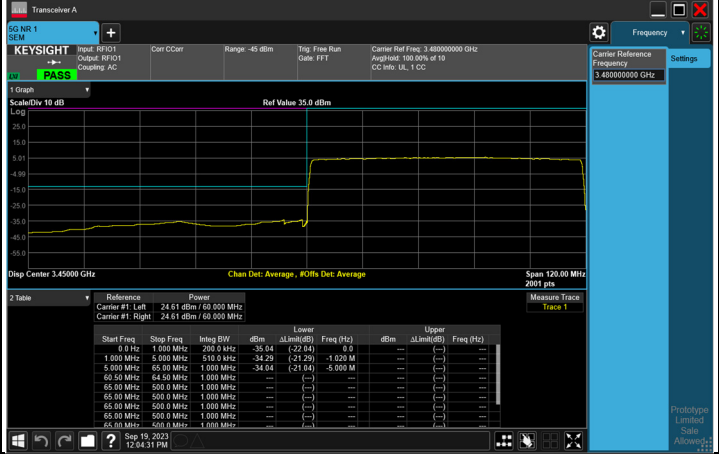
NR n77 SCS 30 kHz (3450-3550 MHz), Channel Bandwidth: 60 MHz

Channel 632000(3480 MHz)

1 RB

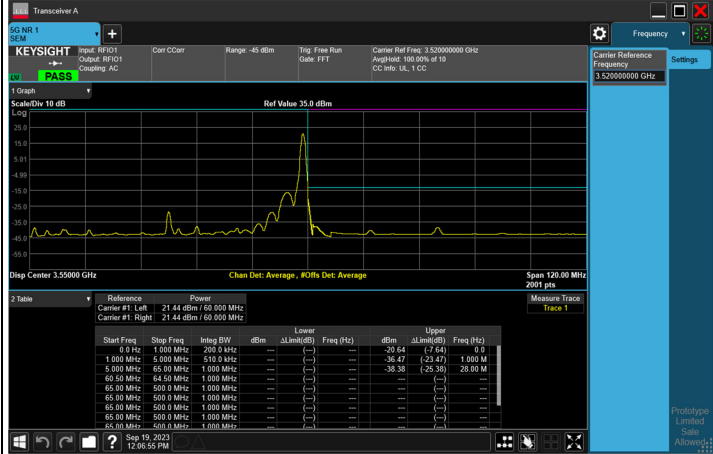


FULL RB

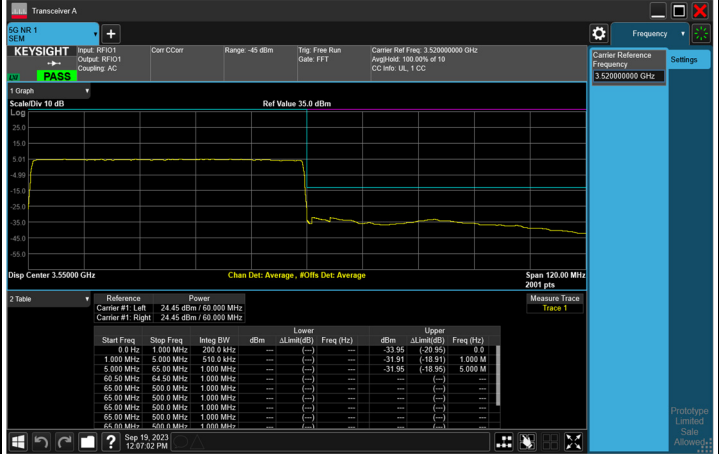


Channel 634666(3519.99 MHz)

1 RB

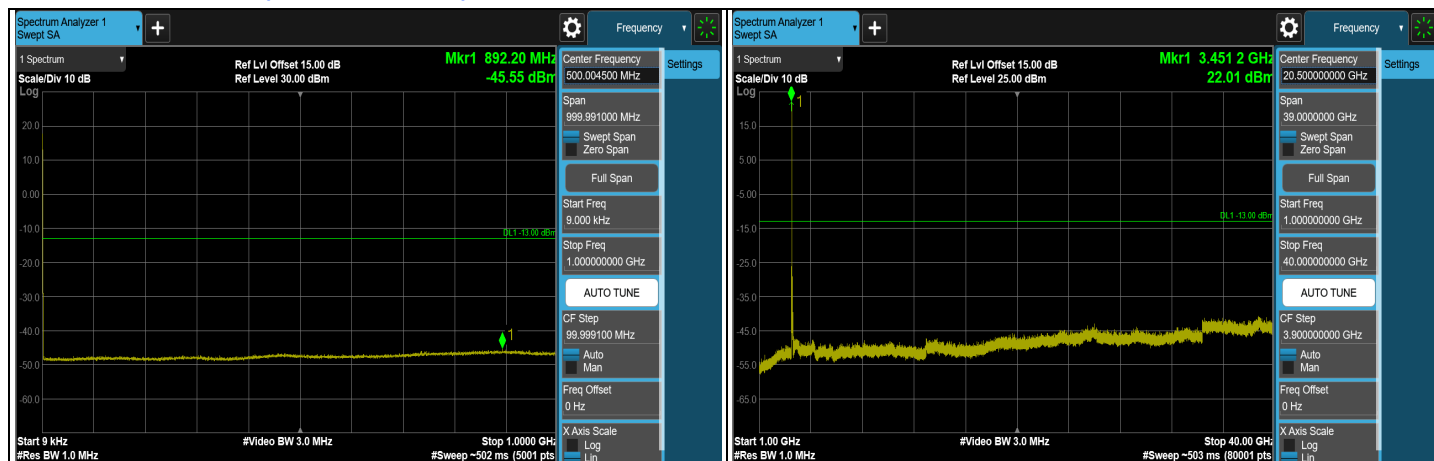


FULL RB





### NR n77 SCS 30 kHz (3450-3550 MHz), Channel Bandwidth: 70 MHz



### BPSK CH 632334 (3485.01 MHz)



### BPSK CH 633334 (3500.01 MHz)



### BPSK CH 634332 (3514.98 MHz)

Note: The signal at 9 kHz is IF signal from spectrum analyzer.



NR n77 SCS 30 kHz (3450-3550 MHz), Channel Bandwidth: 70 MHz

Channel 632334(3485.01 MHz)

1 RB

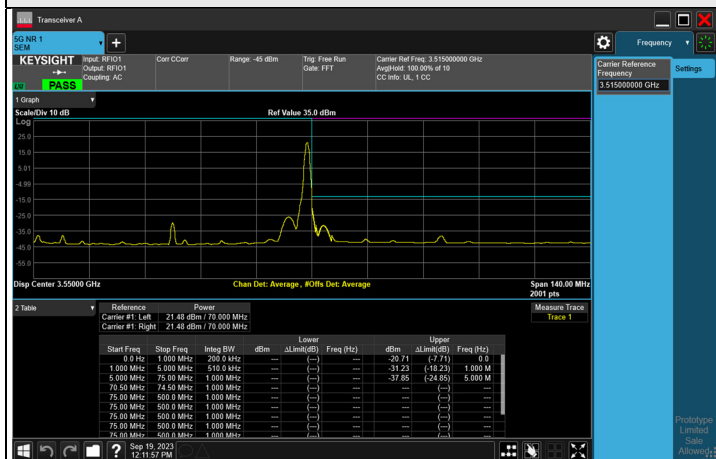


FULL RB



Channel 634332(3514.98 MHz)

1 RB



FULL RB





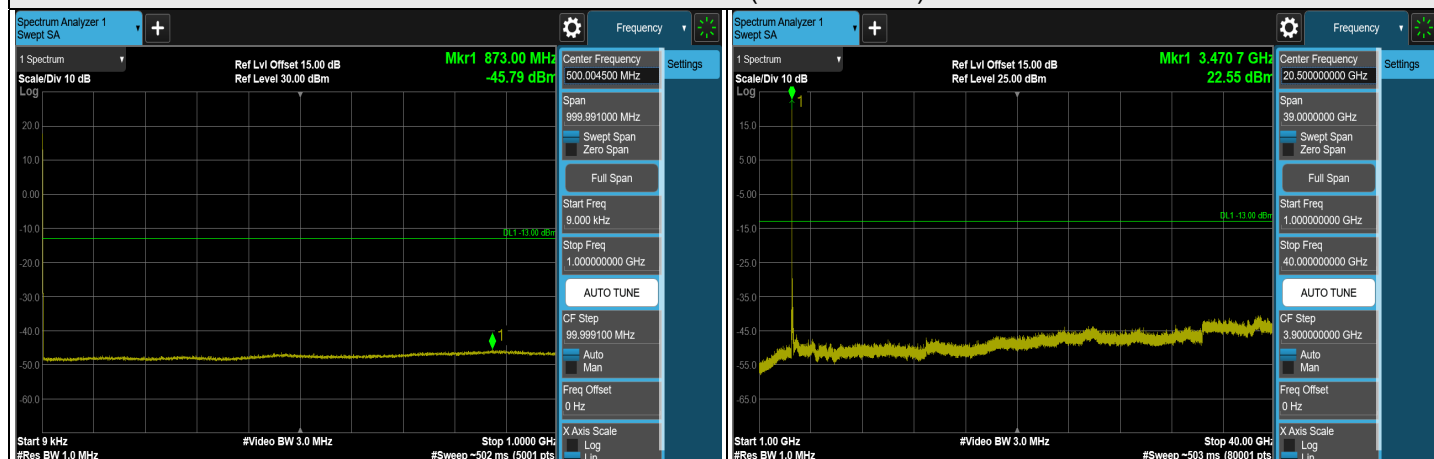
### NR n77 SCS 30 kHz (3450-3550 MHz), Channel Bandwidth: 80 MHz



### BPSK CH 632668 (3490.02 MHz)



### BPSK CH 633334 (3500.01 MHz)

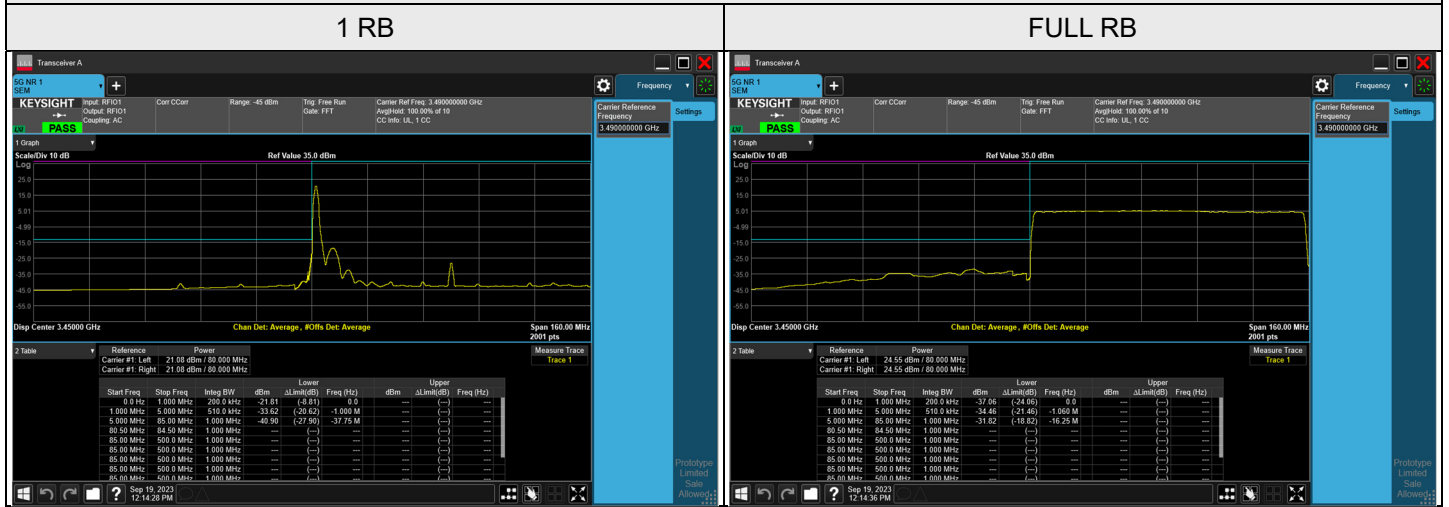


### BPSK CH 634000 (3510 MHz)

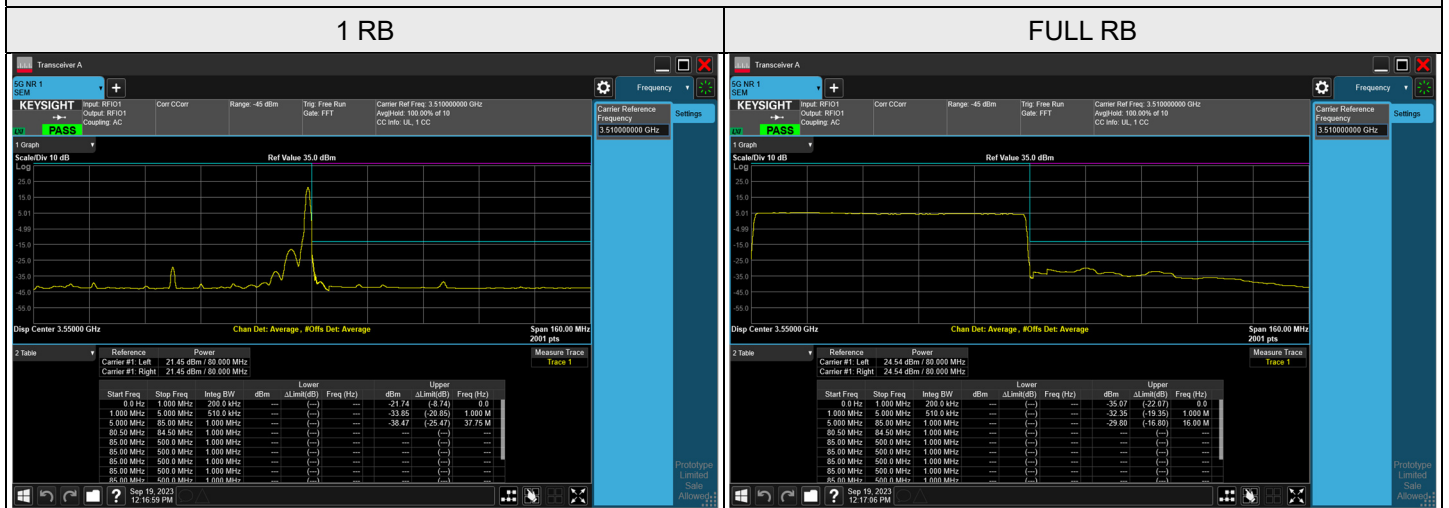
Note: The signal at 9 kHz is IF signal from spectrum analyzer.

NR n77 SCS 30 kHz (3450-3550 MHz), Channel Bandwidth: 80 MHz

Channel 632668(3490.02 MHz)

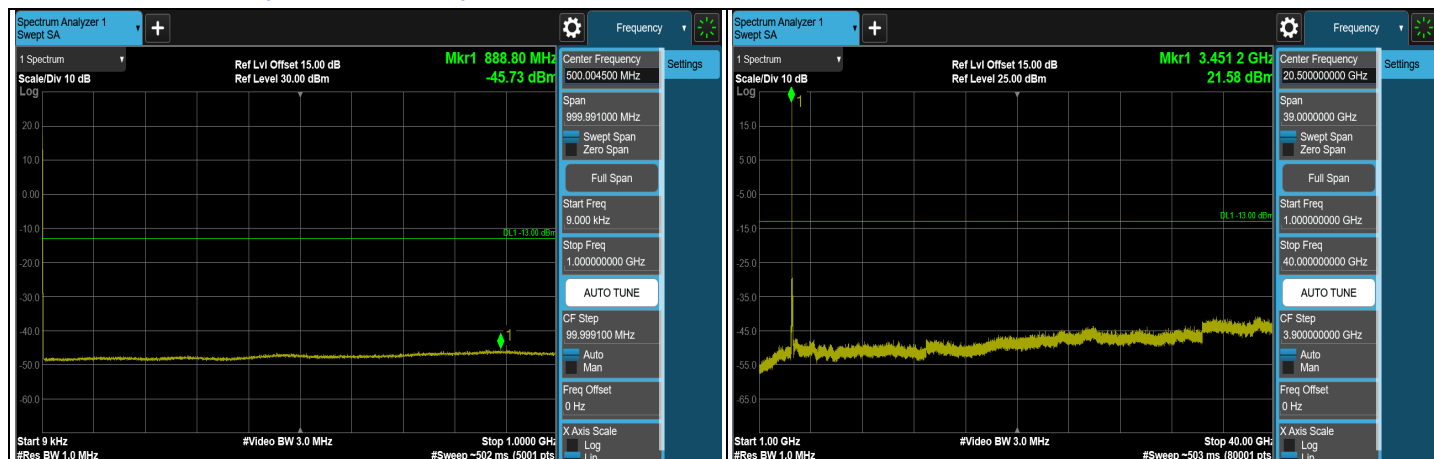


Channel 634000(3510 MHz)





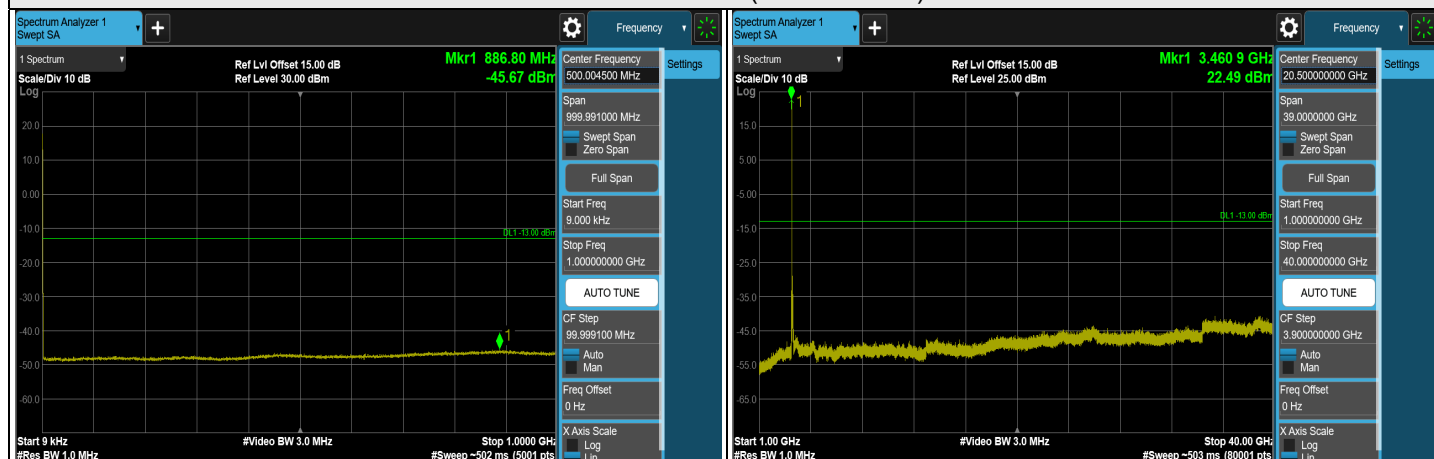
### NR n77 SCS 30 kHz (3450-3550 MHz), Channel Bandwidth: 90 MHz



### BPSK CH 633000 (3495 MHz)



### BPSK CH 633334 (3500.01 MHz)



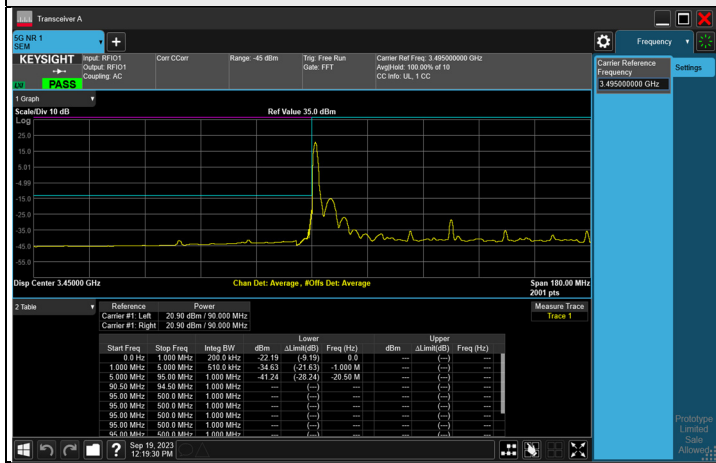
### BPSK CH 633666 (3504.99 MHz)

Note: The signal at 9 kHz is IF signal from spectrum analyzer.

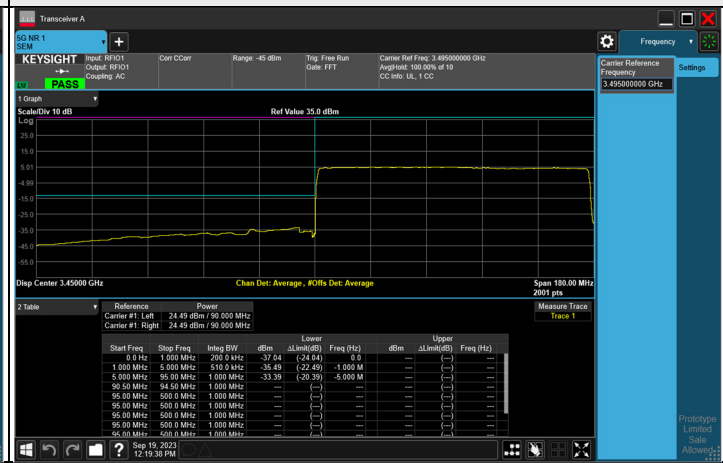
NR n77 SCS 30 kHz (3450-3550 MHz), Channel Bandwidth: 90 MHz

Channel 633000(3495 MHz)

1 RB



FULL RB



Channel 633666(3504.99 MHz)

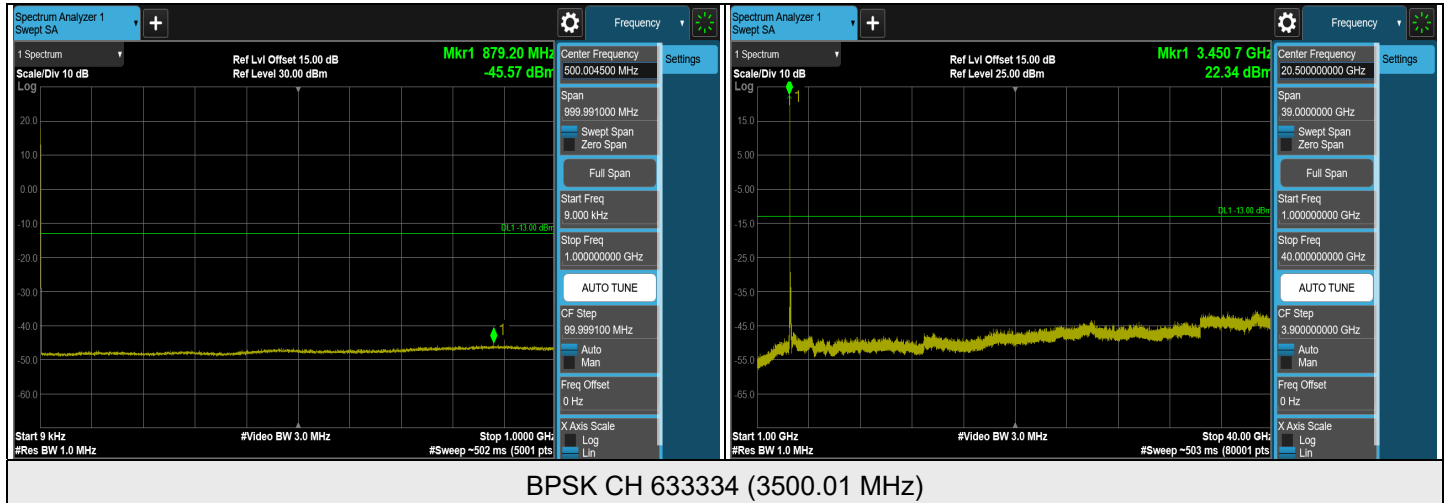
1 RB



FULL RB



### NR n77 SCS 30 kHz (3450-3550 MHz), Channel Bandwidth: 100 MHz



Note: The signal at 9 kHz is IF signal from spectrum analyzer.

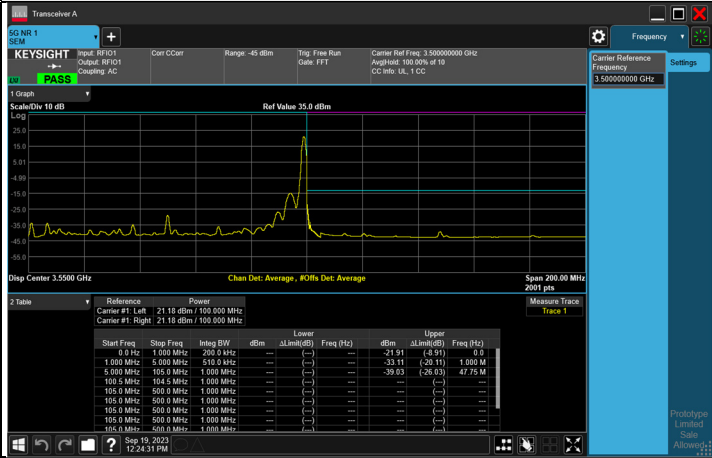




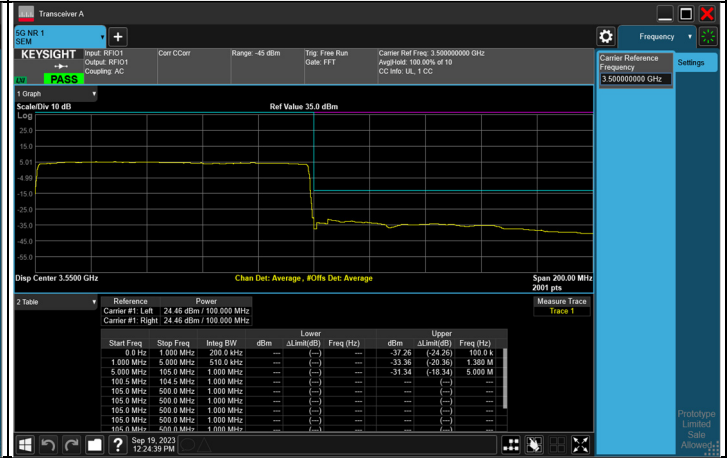
NR n77 SCS 30 kHz (3450-3550 MHz), Channel Bandwidth: 100 MHz

Channel 633334(3500.01 MHz)

1 RB



FULL RB



Channel 633334(3500.01 MHz)

1 RB



FULL RB

