

IA.0355.LA.2FI

Antenna Specification

1. Application:

This application shall apply for antenna unit which shall be used such as automotive, conventional communications, smart home, etc..

1. Electrical Specification:

Those specifications were specially defined for customer's model, and all characteristics were measured under the model's handset testing jig .

2-1. Frequency Band:

Frequency Band	MHz
WIFI 5.8G	5150-5850


2-2. Impedance

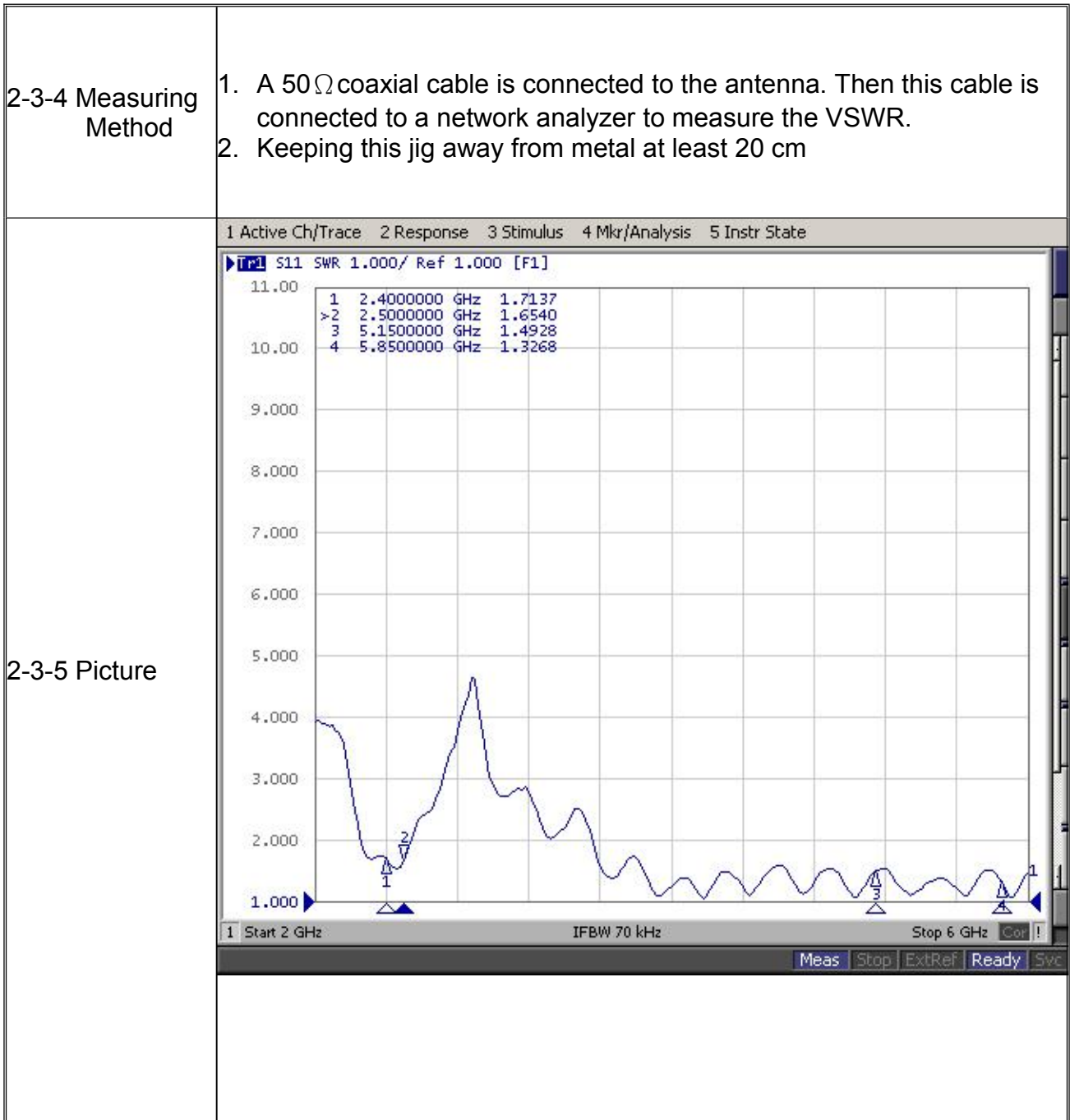
50 ohm nominal

2-3. VSWR

2-3-1.Measurement frequency points and VSWR value

Frequency Band(MHz)	5150	5850
2-3-3. Typical Value:	1.49	1.32

UNLESS OTHER SPECIFIED TOLERANCES ON :			KINGRF TECHNOLOGY CO., LTD.
X=±	X.X=±		
ANGLES=±		HOLEDIA=±	
SCALE :	UNIT : mm		
DRAWN BY: LI	CHECKED BY: YS		
DESIGNED BY: De wen	APPROVED BY: YS		
TITLE : IA.0355.LA.2FI Antenna Specification			SPEC REV.
			P0



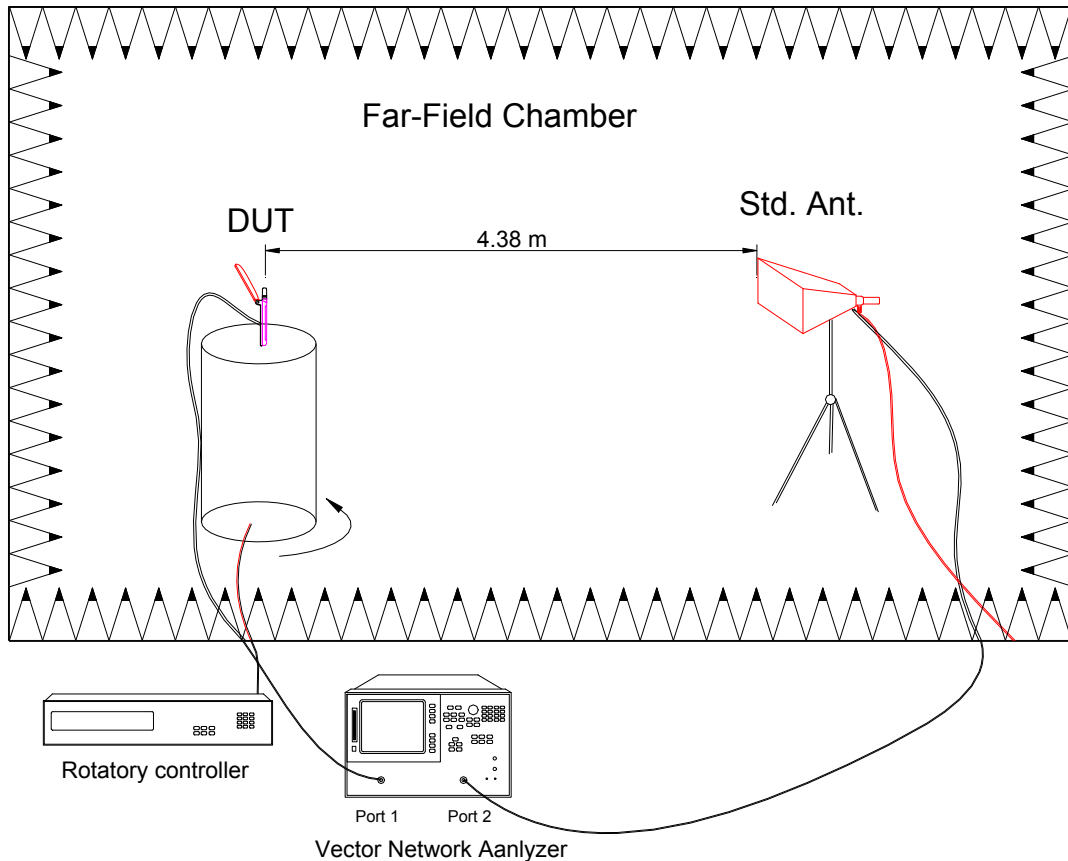
UNLESS OTHER SPECIFIED TOLERANCES ON : X=± X.X=± X.XX=± ANGLES=± HOLEDIA=±		KINGRF TECHNOLOGY CO., LTD.
SCALE :	UNIT : mm	
DRAWN BY: LI	CHECKED BY: YS	THIS DRAWINGS AND SPECIFICATIONS ARE THE PROPERTY OF KINGRF TECHNOLOGY CO.,LTD.AND SHALL NOT BE REPRODUCED OR USED AS THE BASIS FOR THE MANUFACTURE OR SALE OF APPARATUS OR DEVICES WITHOUT PERMISSION
DESIGNED BY: De wen	APPROVED BY: YS	
TITLE : IA.0355.LA.2FI Antenna Specification		SPEC REV. P0

2-4. Efficiency and Gain

4-5.1 Measure method

1. Using a low loss coaxial cable to link a standard handset jig
2. Fixed this handset jig on chamber's rotator plane
3. Linking jig into network analyzer port and using a probing horn antenna to collect data.
4. Using another standard gain horn antenna to calibrated those data

4-5.2 Chamber definition

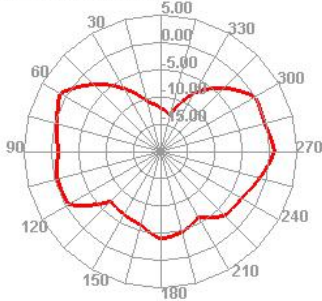
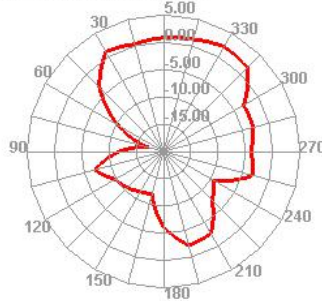
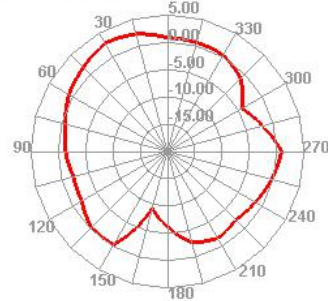


1. An anechoic chamber (7mx4mx3m) which satisfied far-field condition was applied to avoid multi-path effect
2. The quiet room region is 40cmx40cmx40cm at the center of rotator
3. The distance between DUT and standard antenna is 4.38 m
4. Probing antenna (9120D horn antenna) and standard gain horn antenna (BBHA9120 LPF 700MHz ~6GHz)

UNLESS OTHER SPECIFIED TOLERANCES ON : $X = \pm$ $X.X = \pm$ $X.XX = \pm$ ANGLES = \pm HOLEDIA = \pm			KINGRF TECHNOLOGY CO., LTD.
SCALE :	UNIT : mm		
DRAWN BY: LI	CHECKED BY: YS		
DESIGNED BY: De wen	APPROVED BY: YS		
TITLE : IA.0355.LA.2FI Antenna Specification			SPEC REV. P0

2-4-1 Efficiency and Gain

Freq (MHz)	Effi (%)	Gain (dBi)
5150	51.21	3.03
5200	51.62	2.88
5250	45.66	2.6
5300	58.18	3.52
5350	57.98	3.17
5400	64.09	4.04
5450	68.66	5.45
5500	63.58	3.96
5550	58.22	3.55
5600	57.51	2.73
5650	61.47	4.79
5700	78.57	4.79
5725	72.53	4.16
5750	57.46	2.63
5800	65.53	4.14
5850	63.72	4.23
5875	59.14	3.01

5500.000MHz H

5500.000MHz E1

5500.000MHz E2


UNLESS OTHER SPECIFIED TOLERANCES ON :

 $X = \pm$ $X.X = \pm$ $X.XX = \pm$

 ANGLES = \pm HOLEDIA = \pm

KINGRF TECHNOLOGY CO., LTD.
SCALE :
UNIT : mm

DRAWN BY: LI

CHECKED BY: YS

DESIGNED BY: De wen

APPROVED BY: YS

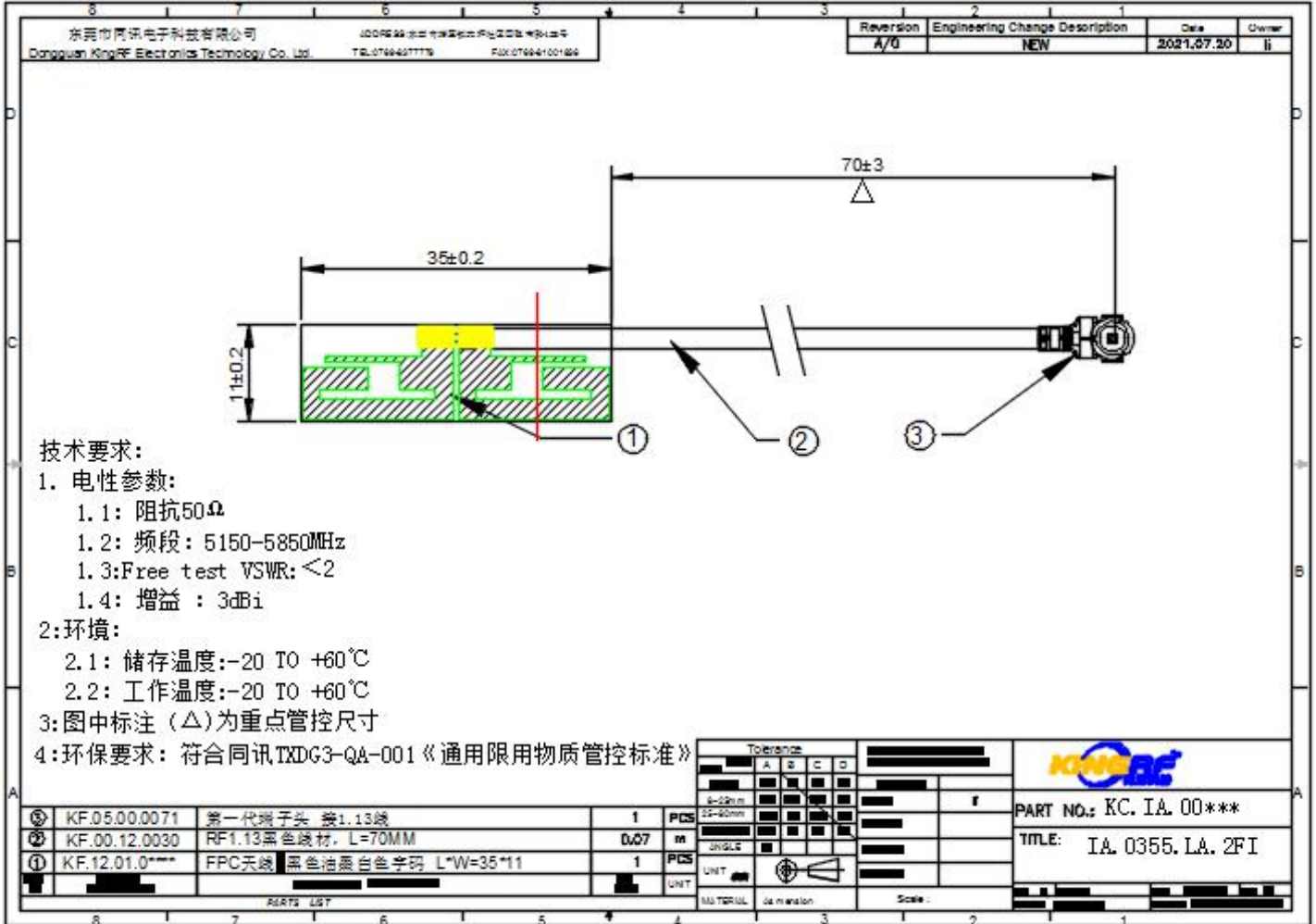
THIS DRAWINGS AND SPECIFICATIONS ARE THE PROPERTY OF KINGRF TECHNOLOGY CO.,LTD.AND SHALL NOT BE REPRODUCED OR USED AS THE BASIS FOR THE MANUFACTURE OR SALE OF APPARATUS OR DEVICES WITHOUT PERMISSION

TITLE : IA.0355.LA.2FI Antenna Specification
SPEC REV.
P0

3. Mechanical Specification:

3-1. Mechanical Configuration (Unit: mm)

The appearance of the antenna is according to drawing

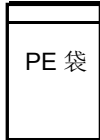
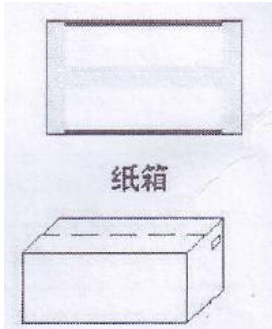


3-2. Connector appearance:

IPEX-I

UNLESS OTHER SPECIFIED TOLERANCES ON :		KINGRF TECHNOLOGY CO., LTD.
X=±	X.X=±	
ANGLES=±	HOLEDIA=±	
SCALE :	UNIT : mm	THIS DRAWINGS AND SPECIFICATIONS ARE THE PROPERTY OF KINGRF TECHNOLOGY CO.,LTD.AND SHALL NOT BE REPRODUCED OR USED AS THE BASIS FOR THE MANUFACTURE OR SALE OF APPARATUS OR DEVICES WITHOUT PERMISSION
DRAWN BY: LI	CHECKED BY: YS	
DESIGNED BY: De wen	APPROVED BY: YS	
TITLE : IA.0355.LA.2FI Antenna Specification		SPEC REV.
		P0

5. 包装规格:

产品料号: XXX			
产品型号: XXX			
一、标签要求:			
需方	XXX		
供方	XXXXX		
物料编码	XX		
产品型号	XX		
数量/单	XXX PCS	出厂日期	X 年 X 月 X 日
备注/其他			
二、装箱要求:			
作业说明:			
1. 内包装:			
产品 XXpcs 一袋, 放入小 PE 袋;			
2. 外包装:			
XxPCS 一箱;			
3. 注意事项:			
a. 是否要增设隔板、珍珠棉;			
b. 标签的帖附, 如 ROHS 等;			

UNLESS OTHER SPECIFIED TOLERANCES ON :			KINGRF TECHNOLOGY CO., LTD.
X=± X.X=± X.XX=± ANGLES=± HOLEDIA=±			
SCALE :	UNIT : mm	THIS DRAWINGS AND SPECIFICATIONS ARE THE PROPERTY OF KINGRF TECHNOLOGY CO.,LTD.AND SHALL NOT BE REPRODUCED OR USED AS THE BASIS FOR THE MANUFACTURE OR SALE OF APPARATUS OR DEVICES WITHOUT PERMISSION	
DRAWN BY: LI	CHECKED BY: YS		
DESIGNED BY: De wen	APPROVED BY: YS		
TITLE : IA.0355.LA.2FI Antenna Specification			SPEC REV. P0