

Antenna Placement for LS06

2023/04/25



Smarter Solutions for a Smarter Future

Antenna Configuration

Model Name: LS06

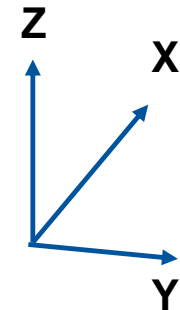
Address: 20 Park Avenue II, Hsinchu Science Park, Hsinchu

Test personal name: Harry Lin

Test equipment: MVG SG64 multi-probe chamber

Test software: NPAC Spherical Measurement V1.5.4

Test description: DUT place in SG64 chamber, and run the antenna passive measurement.



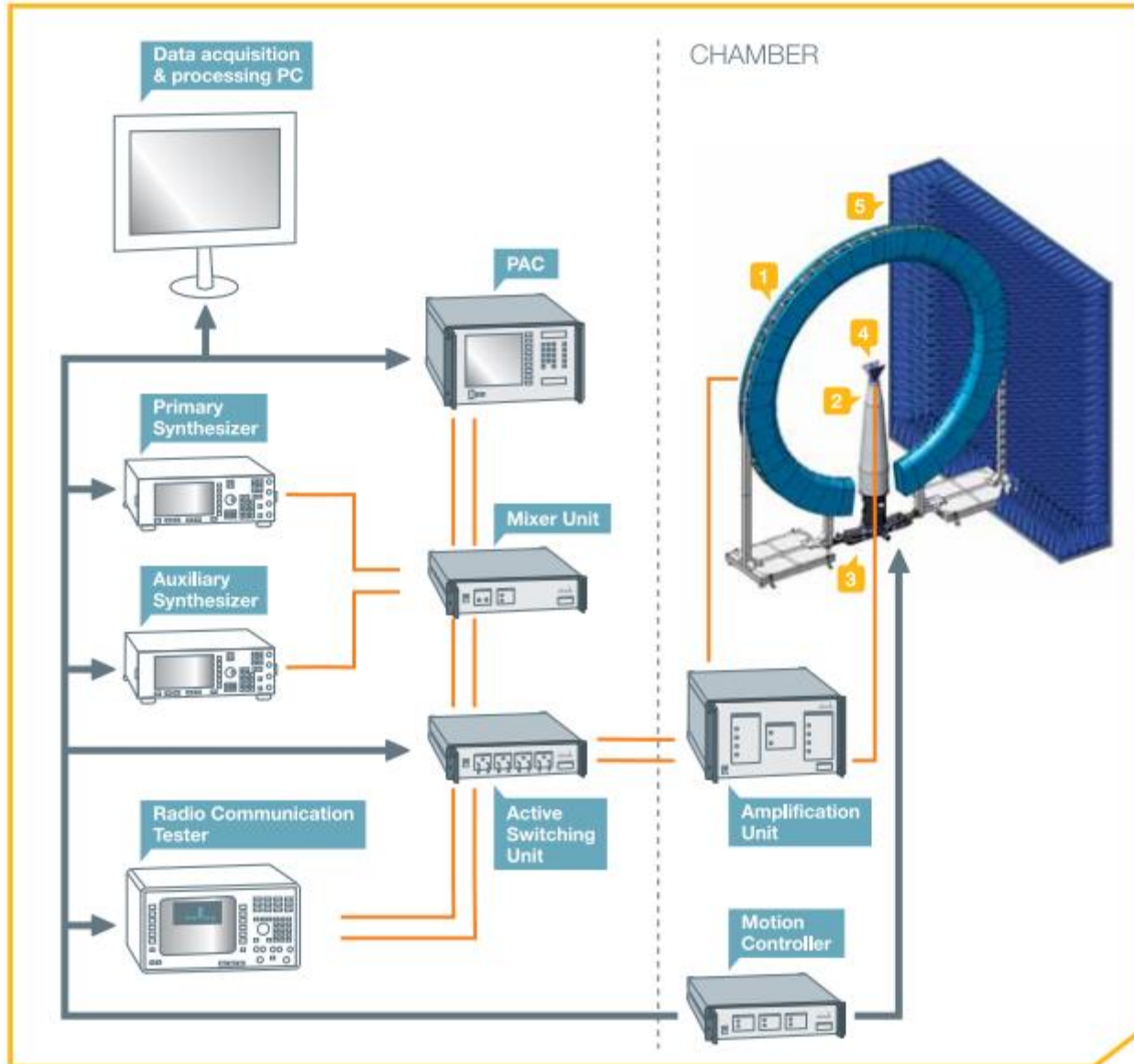
Test equipment list

MVG SG64 Measurement System

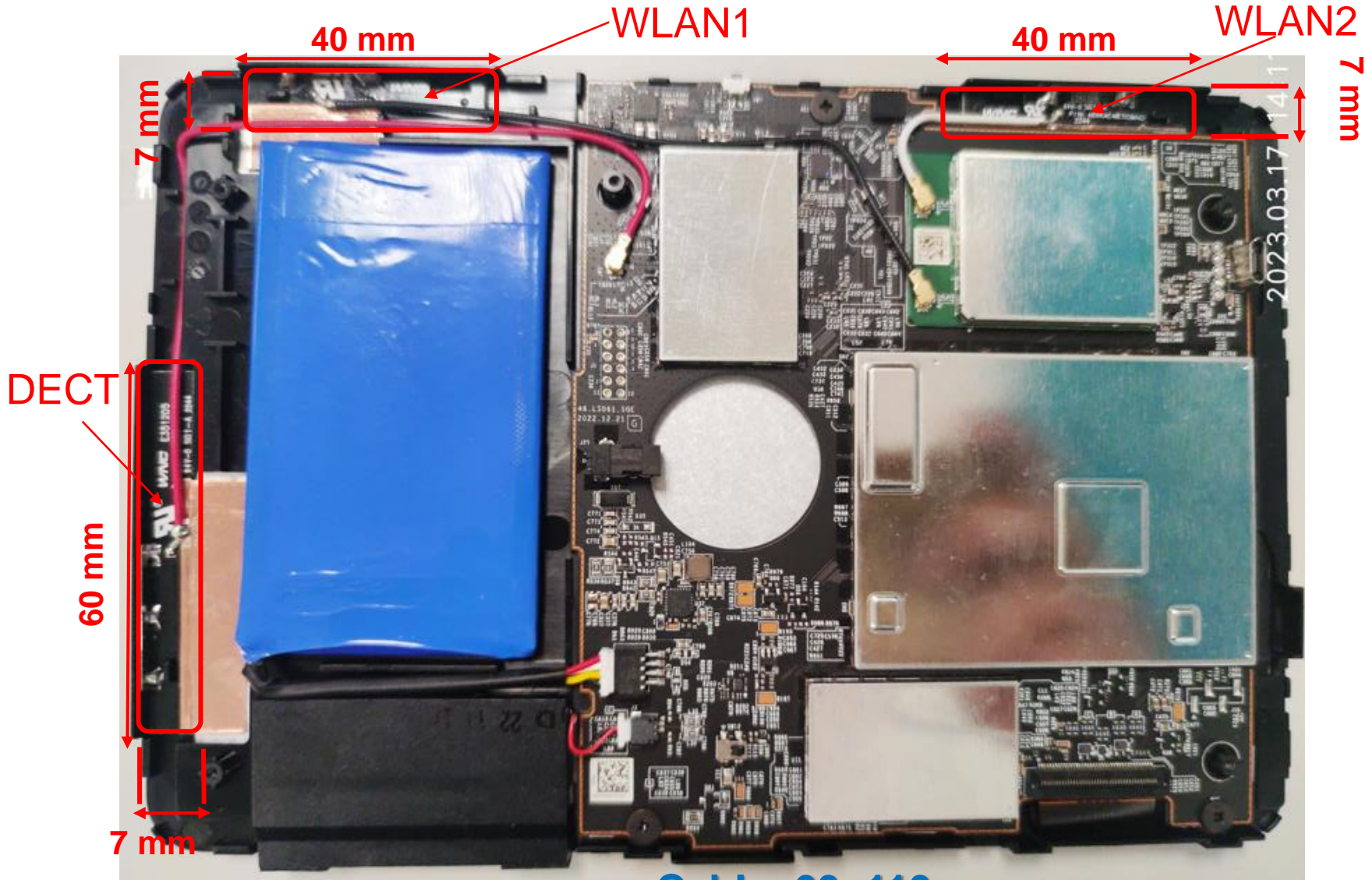
Item	Device	Type/Model	Serial#	Manufacturer	Cal.Date	Cal.Due Date
1	SG64 Chamber	Standard	SG64	MVG	2022/6/15	2023/6/1
2	Turn Table	Customization	-	Machinery Dept.	N/A	N/A
3	New Probe Array Controller	N/A	1102341-4535	MVG	N/A	N/A
4	Power Supply Unit	N/A	1103211-13204	MVG	N/A	N/A
5	Active Switching Unit	N/A	1102347-7214	MVG	N/A	N/A
6	TX Amplification Unit	N/A	1102527-5909	MVG	N/A	N/A
7	RX Amplification Unit	N/A	1102536-3823	MVG	N/A	N/A
8	Transfer Switching Unit	N/A	1102183-3351	MVG	N/A	N/A
9	Mixer Unit	N/A	1102545-7208	MVG	N/A	N/A
10	Power And Control Unit	N/A	1102706-7209	MVG	N/A	N/A
11	Cable 13.7m - 400MHz to 18GHz	SS402	00100A1F5A1XXS	Woken	2022/6/15	2023/6/1
12	Temperature & Humidity Meter	HTC-01	-	Metravi	N/A	N/A



Test Method



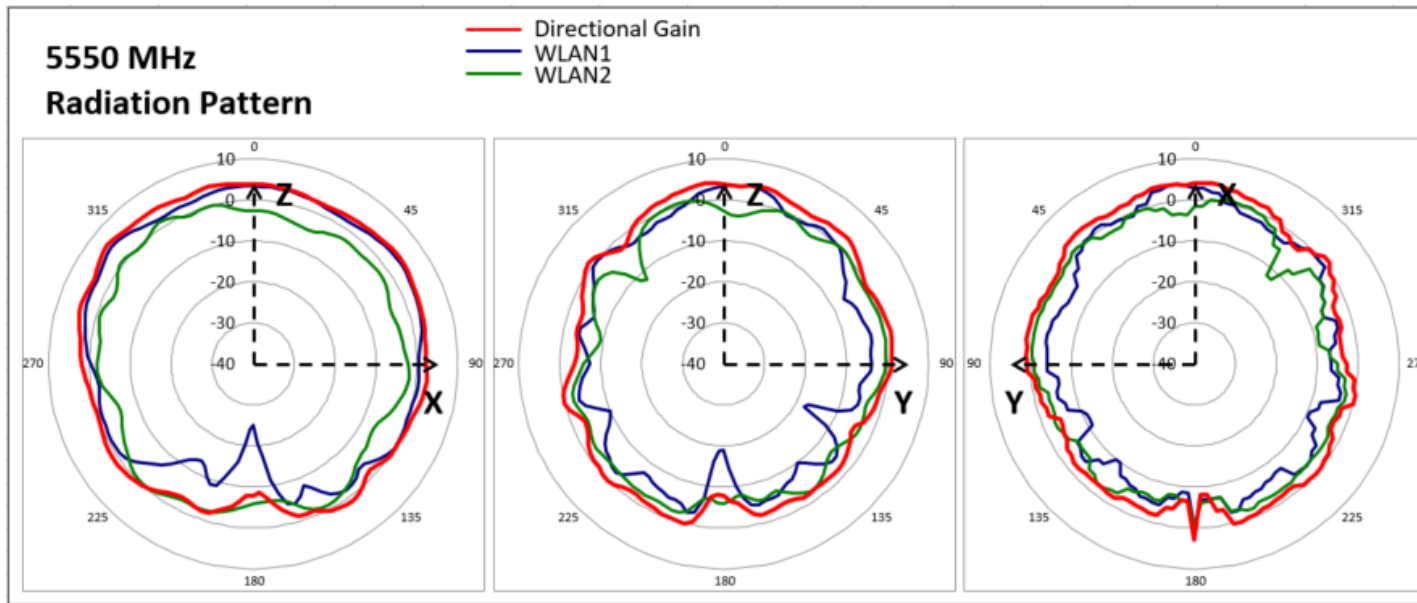
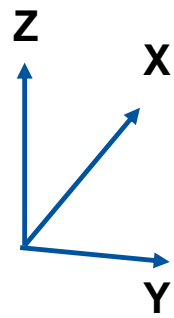
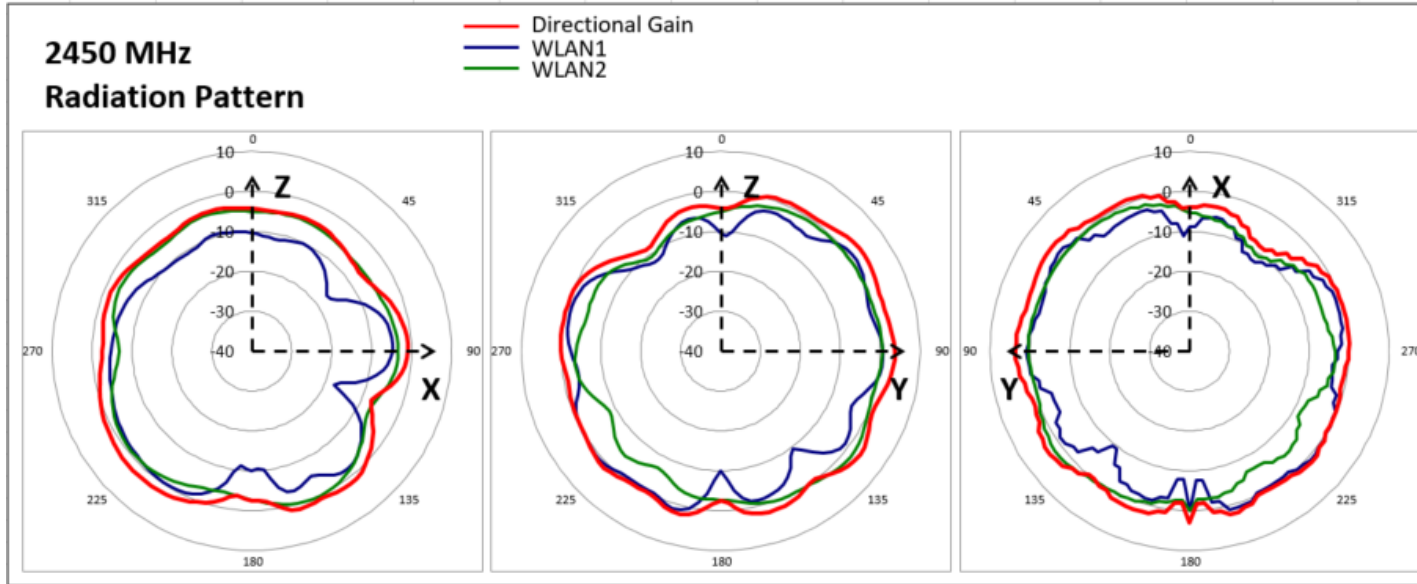
Antenna Placement



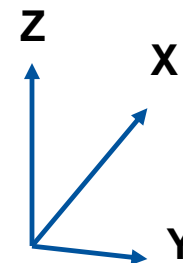
Cable=60~110mm



Antenna Pattern

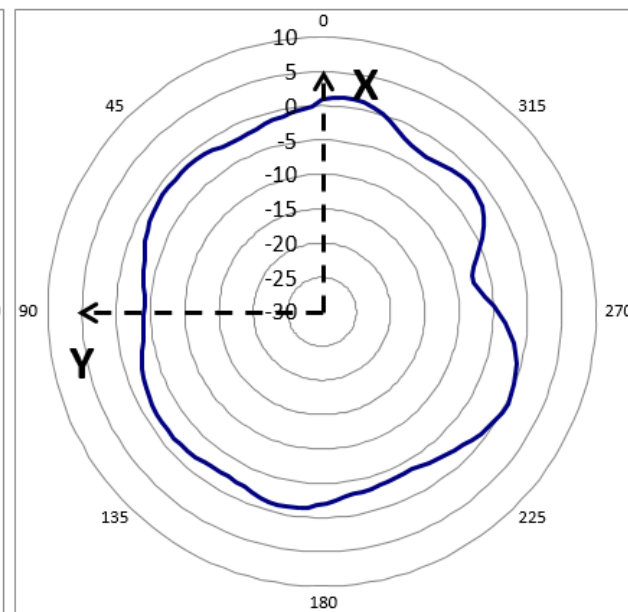
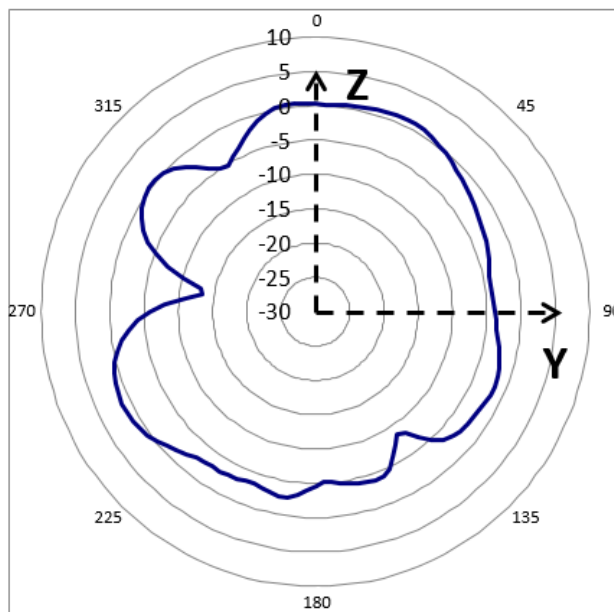
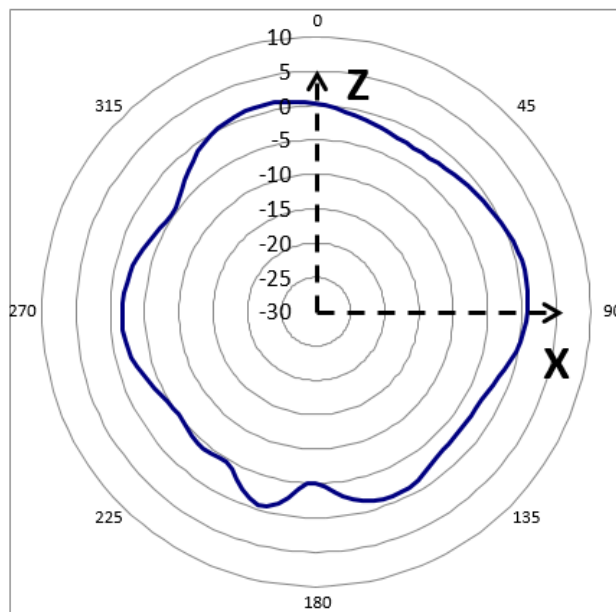


Antenna Pattern-DECT



1920 MHz Radiation Pattern

— DECT



WNC

Smarter Solutions for a Smarter Future



Smarter Solutions for a Smarter Future