

APPROVAL SHEET

Customer Name: **TPV**

Date: **2018/04/27**

Doc. Version: **1**

OEM P/N	317GAAWA624WNC
WNC P/N	81.EK615.G72
Description	ALBERTVILLE, 39TV WIFI MAIN ANTENNA, EK6-TP1
Version	1A

Provided By Wistron NeWeb Corp	Reviewed By Wistron NeWeb Corp	Approved By Customer
Yang Shun Liu	Feng Hsieh	

Wistron NeWeb Corporation
No. 20 , Science Road 2,
Hsinchu Science Park
Hsinchu 300, Taiwan, R.O.C.
TEL: +886-3-666-7799
FAX: +886-3-666-7322
<http://www.wneweb.com>

啟碁科技股份有限公司
新竹市 300 科學園區園區二路 20 號
電話：(03) 666-7799
傳真：(03) 666-7322



Index

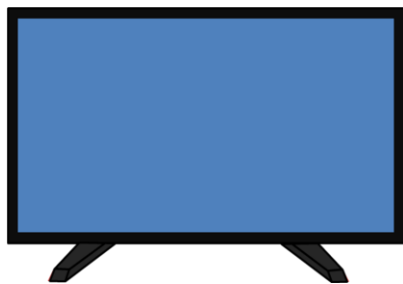
- 1. Introduction**
- 2. Revision History**
- 3. Product Specifications**
- 4. Antenna Performance**

1. Introduction

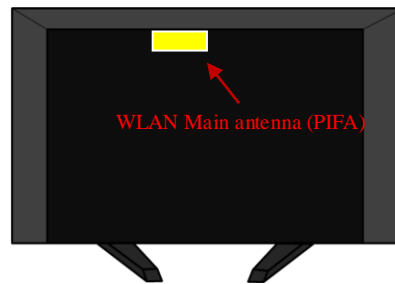
Antenna for 802.11a+n+g system

WLAN MAIN antenna (PIFA)


1. Location: Top Middle of the TV Back Panel
2. Cable length : 164 mm, White (connector with Φ 1.37mm RF cable)



Front View



Back View

	WLAN MAIN Antenna
Position	Top Middle of the TV Back Panel
Antenna Type	PIFA
Cable	Cable color : White, 1.37 (dia) x 164mm , RF connector
Weight	2.605 g
Photos	

2. Revision History

Date	Version	Revision History
04/27/18	1	New Release

3. Product Specifications

3.1 Specifications of Antenna Design

3.1.1 VSWR

WLAN	IEEE 802.11 g/n			IEEE 802.11 a/n		
	2400MHz	2450MHz	2483MHz	5150MHz	5470MHz	5850MHz
VSWR	<2			<2		

3.1.2 Efficiency

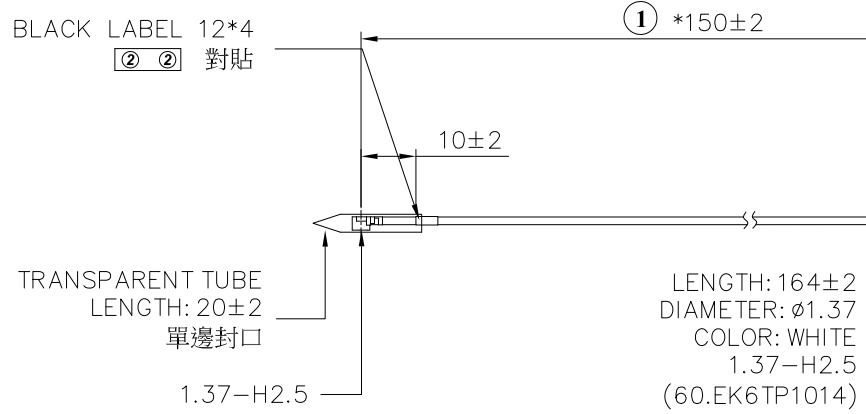
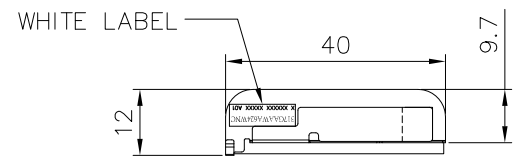
WLAN	IEEE 802.11 g/n			IEEE 802.11 a/n		
	2400MHz	2450MHz	2483MHz	5150MHz	5470MHz	5850MHz
Efficiency	>40%			>50%		

3.2 Mechanical Specifications

See the attached drawing.

PART NUMBER BLOCK		CUSTOMER P/N BLOCK		CONFIRM ANTENNA SPEC.	
PART NUMBER	REV	PART NUMBER	REV	APPROVED	DATE
57.EK615.072	1	317GAAWA624WNC	A01	YANG SHUN LIU	06/20/18

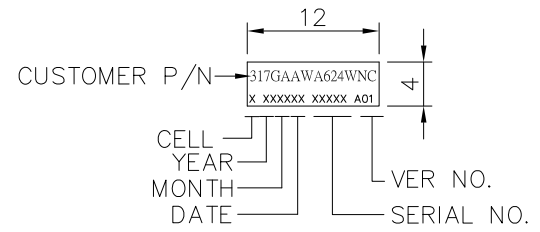
REVISIONS				
ZONE	REV	DESCRIPTION	DATE	APPROVED
	1	RELEASE TO FILE	06/20/18	VINCENT CC LIN



卡勾須加壓, 扣緊

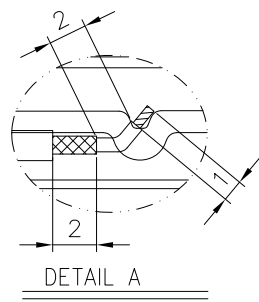
SEE DETAIL "A"

焊點不可超出鐵件



DETAIL OF LABEL
SCALE : 2/1

"*"ARE THE CRITICAL DIMENSIONS



DETAIL A
SCALE: 4/1

3	3T.EK6TP1.005	BUFFER, BT-39, EVA60_5MM, EK6-TP1	EA	1
2	3T.EK6TP.003	PLATE, AL FOIL, BT-43, EK6-TP1	EA	1
1	3S.EK6TP.00F	ANTENNA, SUS-1, BT-39, EK6-TP1	EA	1
ITEM	PART NO.	DESCRIPTION	UNIT	QTY

ONLY ME PARTS REFERENCE

81.EK615.G72	EK6-TP1
NEXT ASSY	USED ON
APPLICATION	

UNLESS OTHERWISE SPECIFIED ALL DIMENSIONS ARE IN mm AND TOLERANCES ARE:			
INTEGER DIMENSIONS	±0.2	ANGULAR DIMENSIONS	±1°
1 PLACE DECIMAL	±0.1	HOLES UNDER Ø5.00	±0.05
2 PLACE DECIMALS	±0.05		
MATERIAL: NA			
FINISH: NA			
THIRD ANGLE PROJECTION	DRAWN	STACY CHANG	06/20/18
	ENGR	YANG SHUN LIU	06/20/18
	APVD	VINCENT CC LIN	06/20/18

WNC 啟碁科技股份有限公司
 Wistron NeWeb Corp.
 20 Park Avenue II, Hsinchu Science Park,
 Hsinchu 308, Taiwan, R.O.C.
 Tel: 886-3-6667799 Fax: 886-3-5788726

DWG TITLE
 ALBERTVILLE, 39TV WIFI MAIN ANTENNA, EK6-TP1

SIZE DWG NO. 57.EK615.072 REV 1

SCALE 1/1 SHEET 1 OF 1

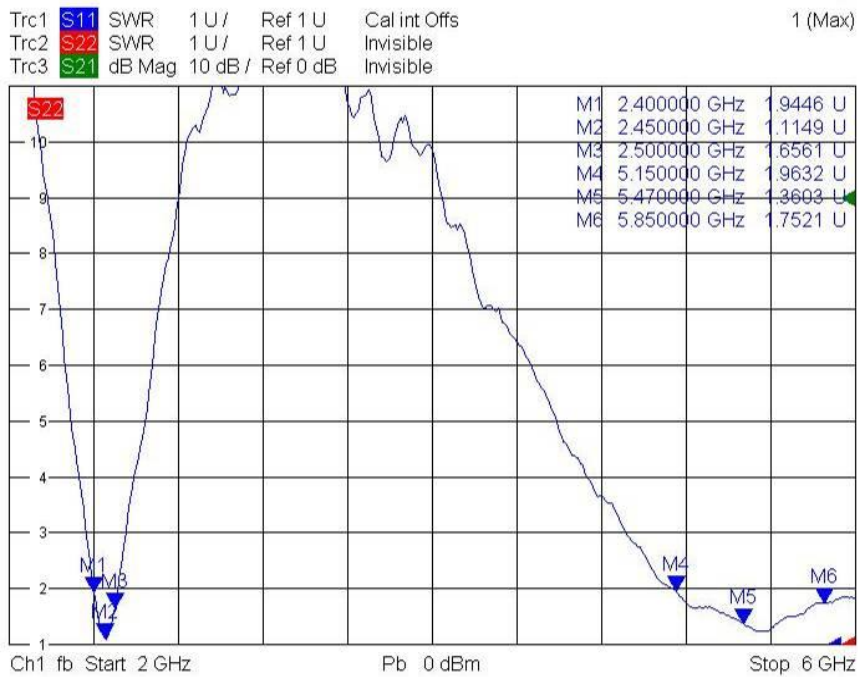
3.3 Antenna Material List

Items	Description
Antenna	3S.EK6TP.008WS
Cable	Φ1.37 Cable(White)
Connector	IPEX
Adhesive	TT219
BUFFER	EVA60

4. Antenna Performance

4.1 VSWR

Main



4.2 Efficiency data

Main

Freq(GHz)	Efficiency(%)	Efficiency(dB)
2400	50.47	-2.97
2450	60.35	-2.19
2500	53.22	-2.74
5150	66.09	-1.8
5250	70.55	-1.51
5350	72.64	-1.39
5470	73.13	-1.36
5600	71.57	-1.45
5725	72.38	-1.4
5785	72.3	-1.4
5850	66.19	-1.79

4.3 Peak Gain

Frequency (MHz)	Gain (dBi)
2400	0.06
2450	1.08
2500	0.62
5150	2.73
5250	3.10
5350	3.15
5470	2.81
5600	3.35
5725	3.67
5785	3.28
5850	2.81

