

APPROVAL SHEET

Customer Name: **TPV**

Date: **2018/05/03**

Doc. Version: **1**

OEM P/N	317GAAWA628WNC
WNC P/N	81.EK615.G68
Description	ALBERTVILLE, 32TV WIFI AUX ANTENNA, EK6-TP1
Version	1A

Provided By Wistron NeWeb Corp	Reviewed By Wistron NeWeb Corp	Approved By Customer
Yang Shun Liu	Feng Hsieh	

Wistron NeWeb Corporation
No. 20 , Science Road 2,
Hsinchu Science Park
Hsinchu 300, Taiwan, R.O.C.
TEL: +886-3-666-7799
FAX: +886-3-666-7322
<http://www.wneweb.com>

啟碁科技股份有限公司
新竹市 300 科學園區園區二路 20 號
電話：(03) 666-7799
傳真：(03) 666-7322



Index

- 1. Introduction**
- 2. Revision History**
- 3. Product Specifications**
- 4. Antenna Performance**

1. Introduction

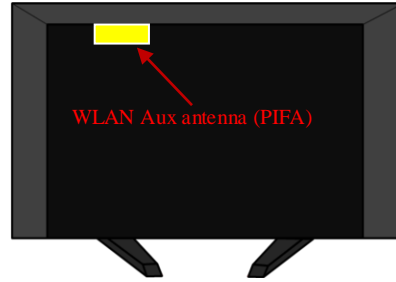
Antenna for 802.11a+n+g system

WLAN AUX antenna (PIFA)

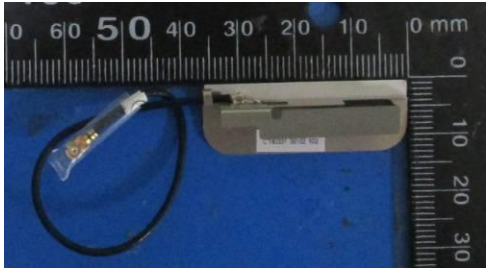
1. Location: Top Left of the TV Back Panel
2. Cable length : 118 mm, Black(connector with Φ 1.37mm RF cable)



Front View



Back View

	WLAN AUX Antenna
Position	Top Left of the TV Back Panel
Antenna Type	PIFA
Cable	Cable color : Black, 1.37 (dia) x 118mm , RF connector
Weight	2.245g
Photos	

2. Revision History

Date	Version	Revision History
05/03/18	1	New Release

3. Product Specifications

3.1 Specifications of Antenna Design

3.1.1 VSWR

WLAN	IEEE 802.11 g/n			IEEE 802.11 a/n		
	2400MHz	2450MHz	2483MHz	5150MHz	5470MHz	5850MHz
VSWR	<2			<2		

3.1.2 Efficiency

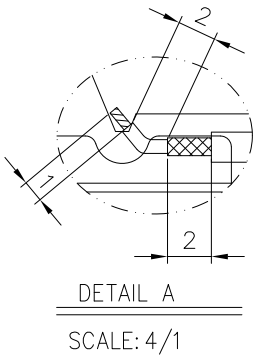
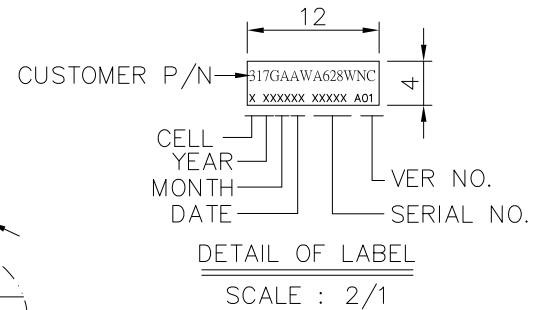
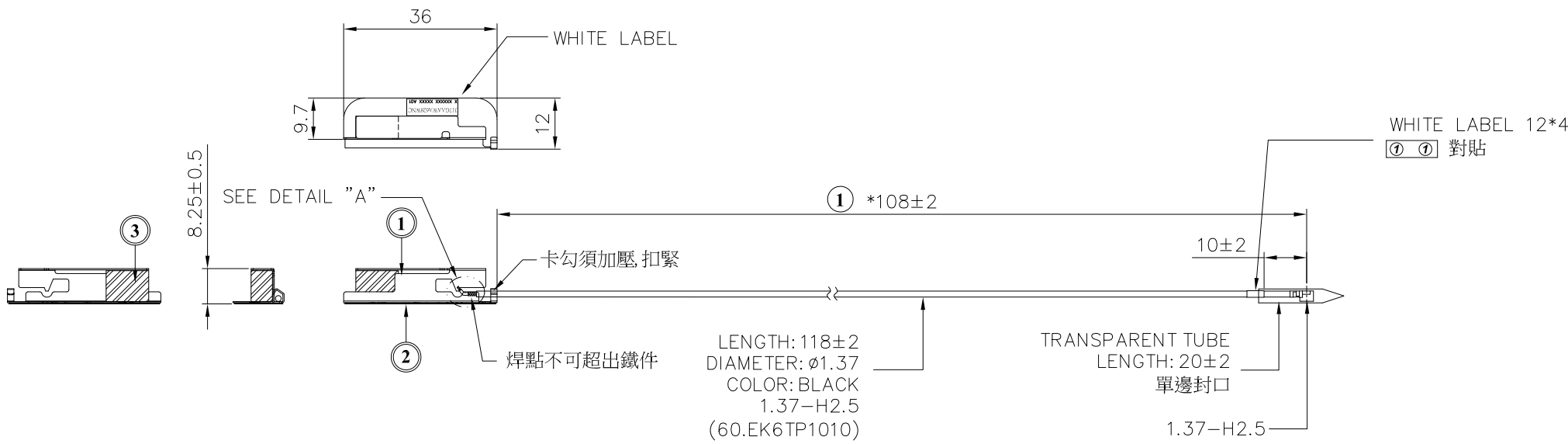
WLAN	IEEE 802.11 g/n			IEEE 802.11 a/n		
	2400MHz	2450MHz	2483MHz	5150MHz	5470MHz	5850MHz
Efficiency	>40%			>50%		

3.2 Mechanical Specifications

See the attached drawing.

PART NUMBER BLOCK		CUSTOMER P/N BLOCK		CONFIRM ANTENNA SPEC.	
PART NUMBER	REV	PART NUMBER	REV	APPROVED	DATE
57.EK615.068	1	317GAAWA628WNC	A01	YANG SHUN LIU	06/20/18

REVISIONS				
ZONE	REV	DESCRIPTION	DATE	APPROVED
	1	RELEASE TO FILE	06/20/18	VINCENT CC LIN



3	3T.EK6TP.002	BUFFER, BT-50, EVA60, EK6-TP1	EA	1
2	3T.EK6TP.004	PLATE, AL FOIL, BT-50, EK6-TP1	EA	1
1	3S.EK6TP.00E	ANTENNA, SUS-1, BT-32, EK6-TP1	EA	1
ITEM	PART NO.	DESCRIPTION	UNIT	QTY

ONLY ME PARTS REFERENCE

UNLESS OTHERWISE SPECIFIED ALL DIMENSIONS ARE IN mm AND TOLERANCES ARE:						WNC 啟碁科技股份有限公司 20 Park Avenue II, Hsinchu Science Park, Hsinchu 308, Taiwan, R.O.C. Tel: 886-3-6667799 Fax: 886-3-5788726	
INTEGER DIMENSIONS ±0.2		1 PLACE DECIMAL ±0.1		ANGULAR DIMENSIONS ±1°			
2 PLACE DECIMALS ±0.05				HOLES UNDER Ø5.00 ±0.05		DWG TITLE	
MATERIAL: NA						ALBERTVILLE, 32TV WIFI AUX ANTENNA, EK6-TP1	
FINISH: NA						SCALE 1/1 SHEET 1 OF 1	
81.EK615.G68		EK6-TP1		THIRD ANGLE PROJECTION		SIZE DWG NO.	
NEXT ASSY		USED ON		DRAWN		A3 57.EK615.068	
APPLICATION				ENGR		REV 1	
				APVD			
				STACY CHANG		06/20/18	
				YANG SHUN LIU		06/20/18	
				VINCENT CC LIN		06/20/18	

3.3 Antenna Material List

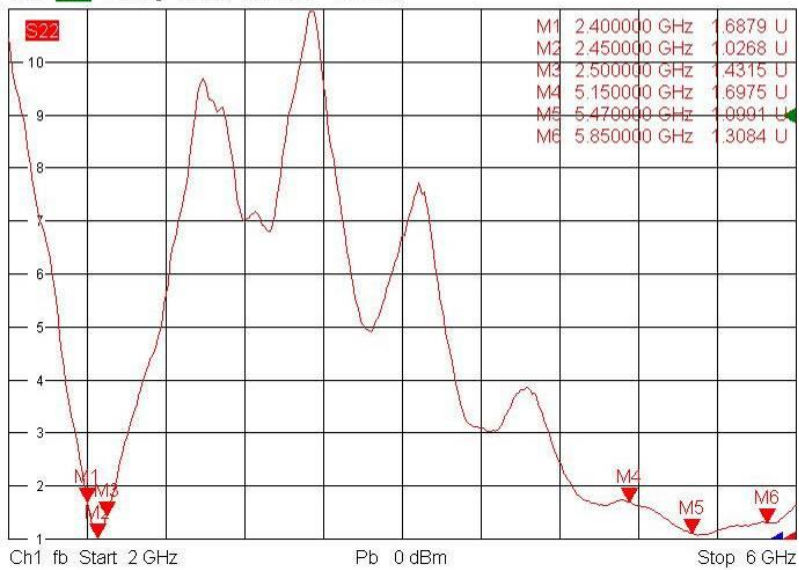
Items	Description
Antenna	3S.EK6TP.007WS
Cable	Φ1.37 Cable(Black)
Connector	IPEX
Adhesive	TT219
BUFFER	EVA60

4. Antenna Performance

4.1 VSWR

Aux

Trc1 S11 SWR 1 U / Ref 1 U Invisible 1 (Max)
 Trc2 S22 SWR 1 U / Ref 1 U Cal int Offs
 Trc3 S21 dB Mag 10 dB / Ref 0 dB Invisible



3/7/2018, 9:21 PM

4.2 Efficiency data

Aux

Freq(GHz)	Efficiency(%)	Efficiency(dB)
2400	60.54	-2.18
2450	65.91	-1.81
2500	60.68	-2.17
5150	75.27	-1.23
5250	79.76	-0.98
5350	80.58	-0.94
5470	80.08	-0.96
5600	77.11	-1.13
5725	81.64	-0.88
5785	81.67	-0.88
5850	78.21	-1.07

4.3 Peak Gain

Frequency (MHz)	Gain (dBi)
2400	2.25
2450	2.44
2500	1.98
5150	6.64
5250	6.37
5350	6.32
5470	6.27
5600	5.92
5725	6.25
5785	6.31
5850	6.38

4.4 Antenna Pattern

Aux

