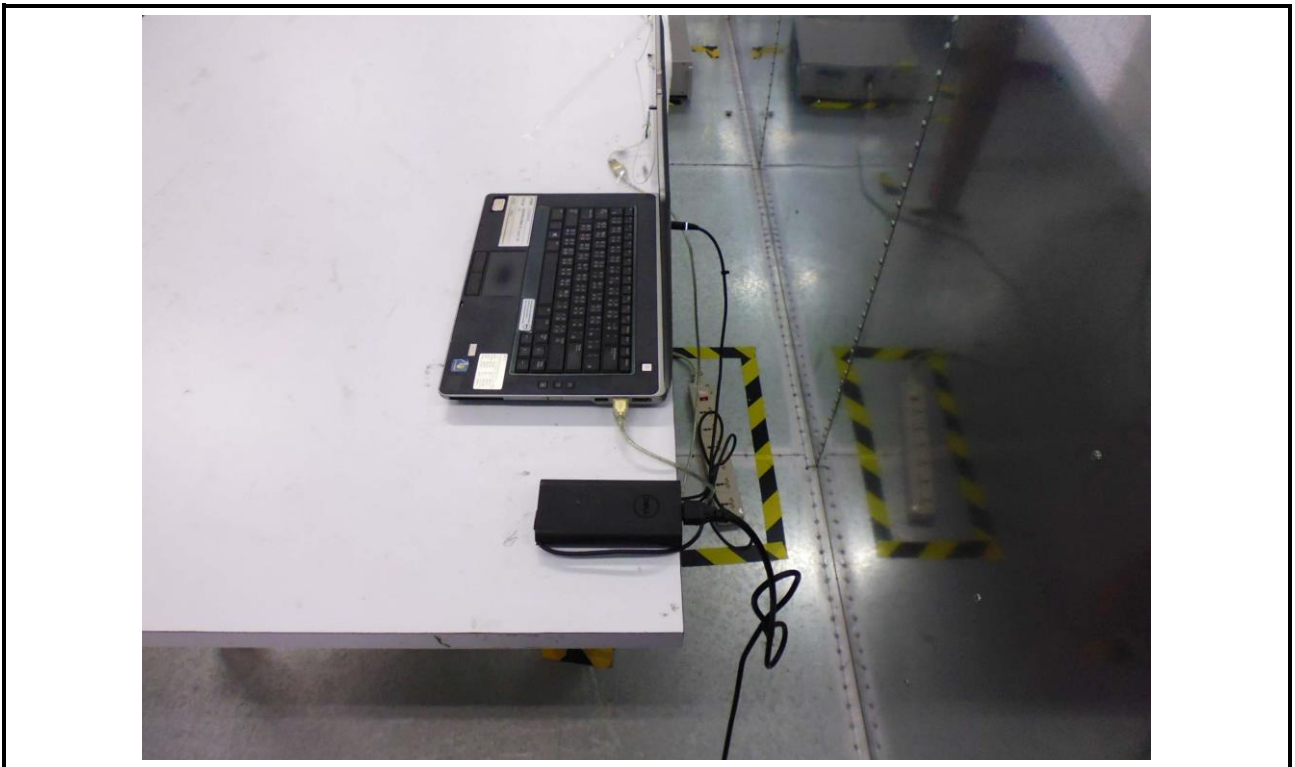
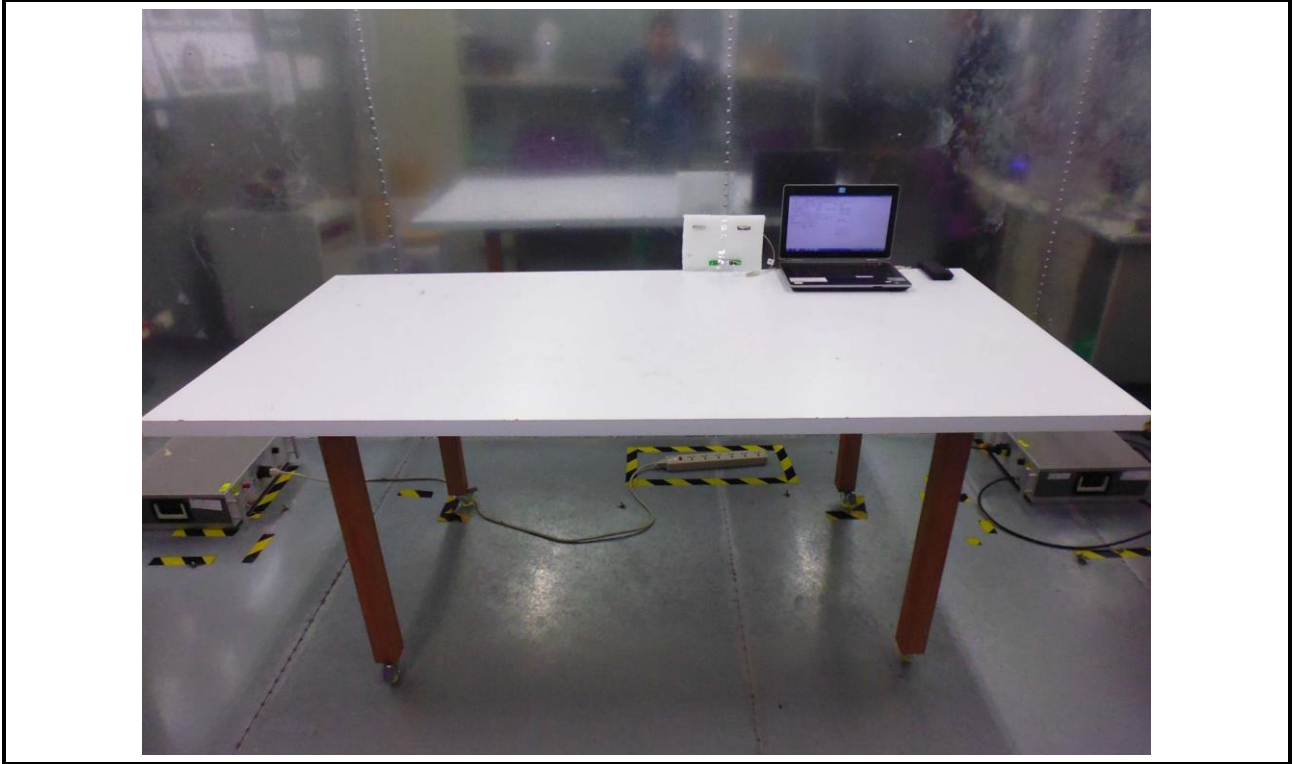


## Photographs of the Test Configuration

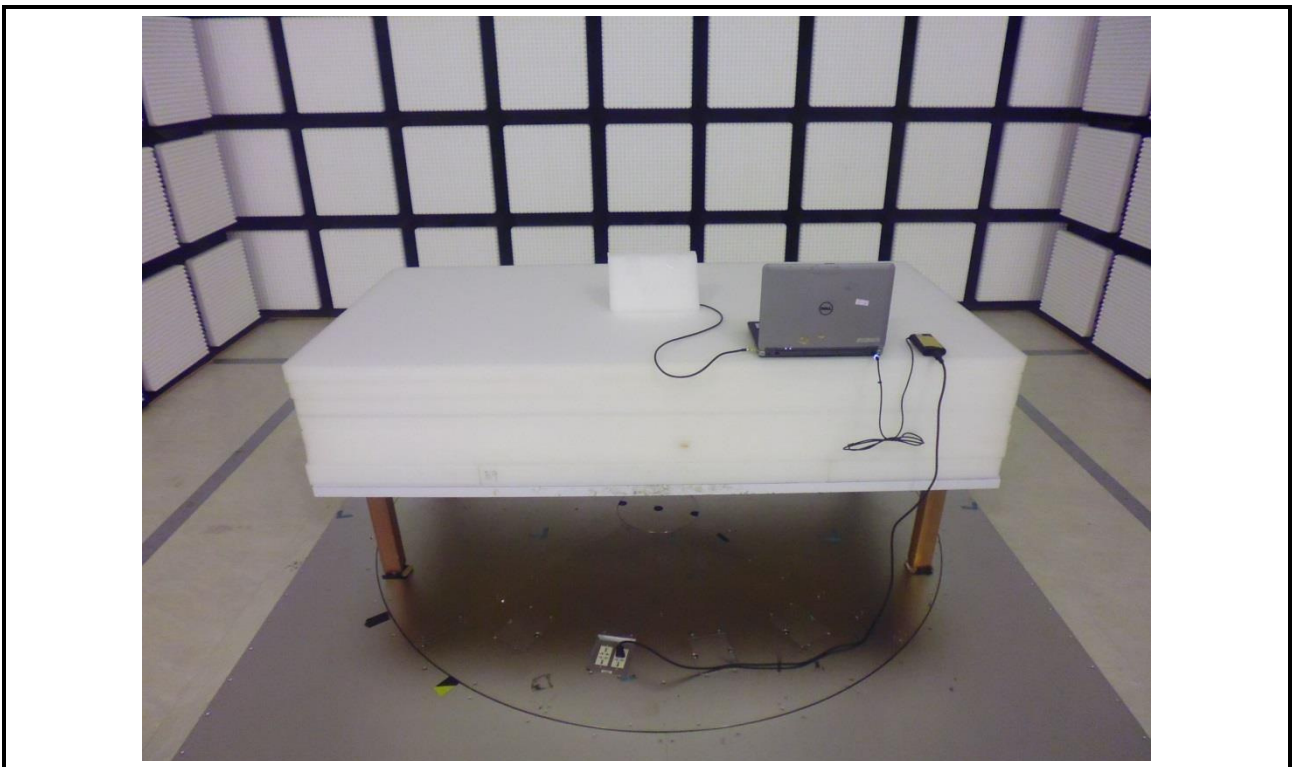
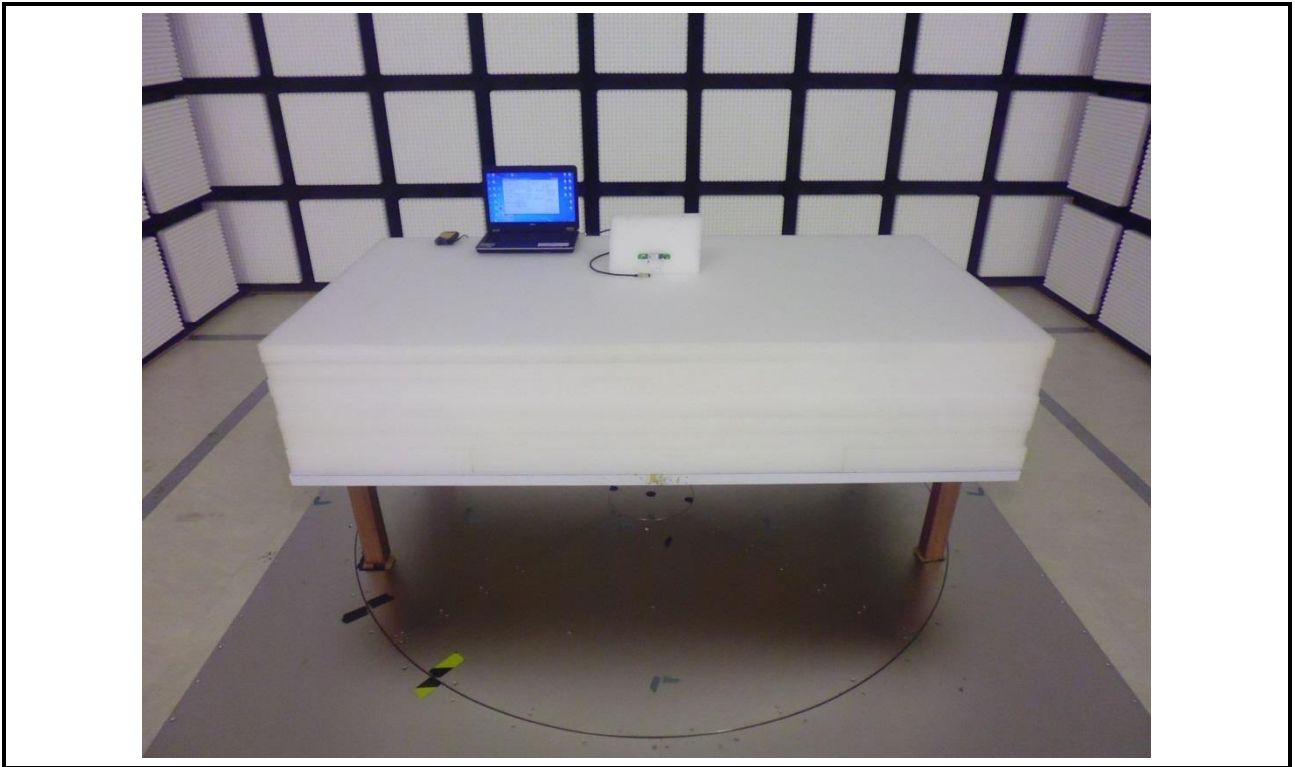
### Conducted Emission Test



### Conducted Emission Test



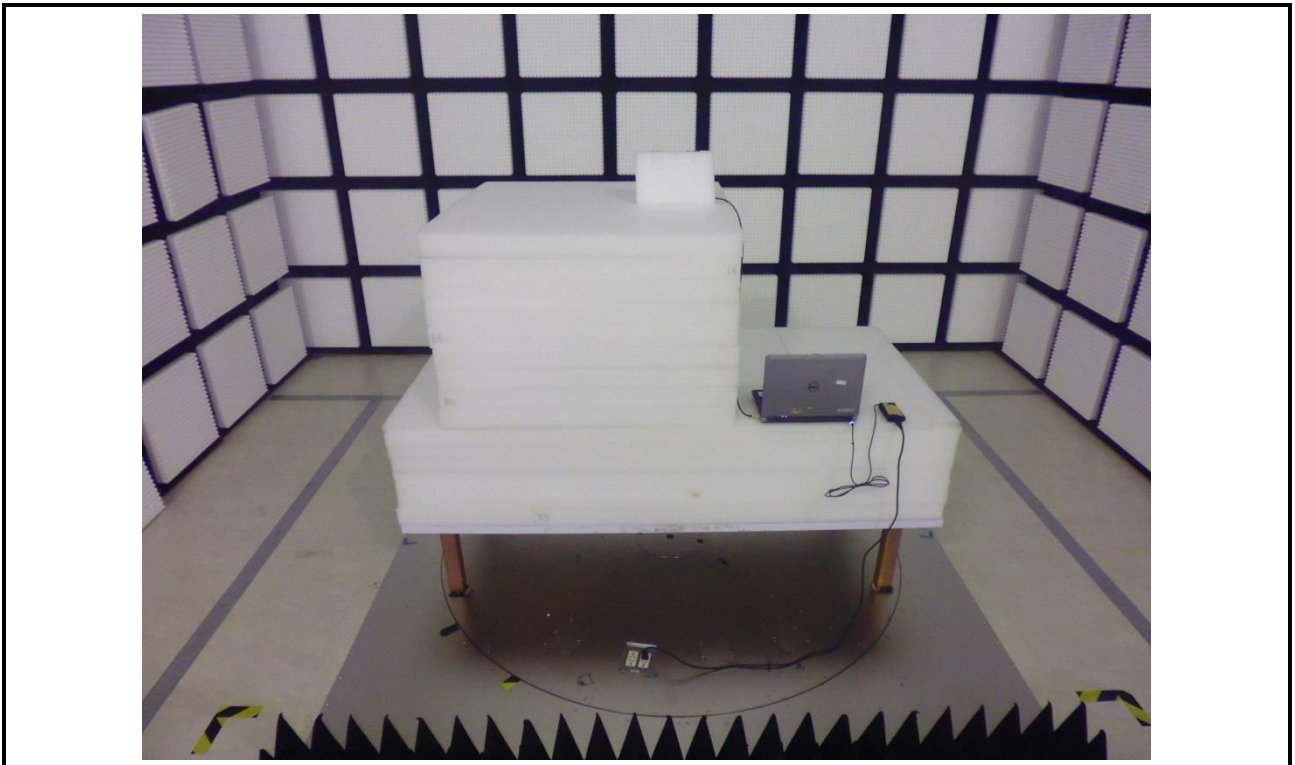
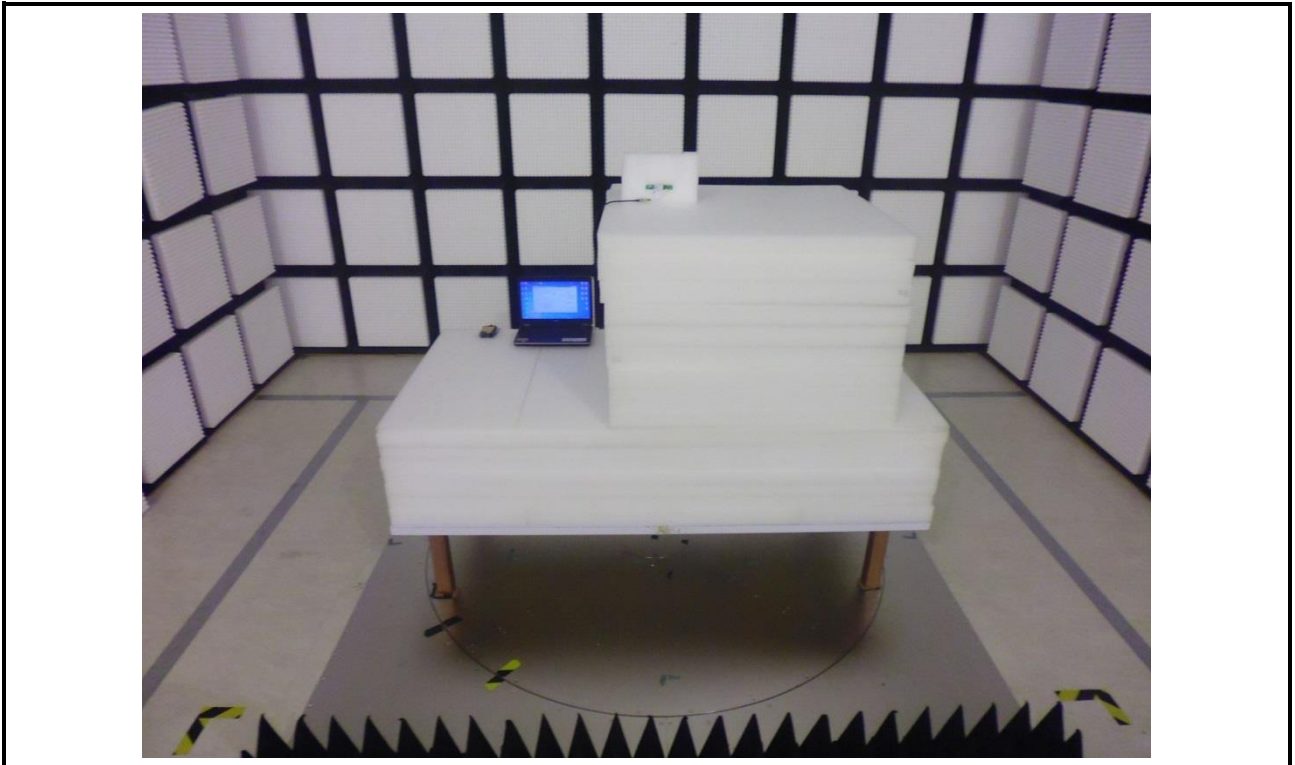
**Radiated Emission Below 1GHz Test (On-board ANT0 + On-board ANT1 mode)**



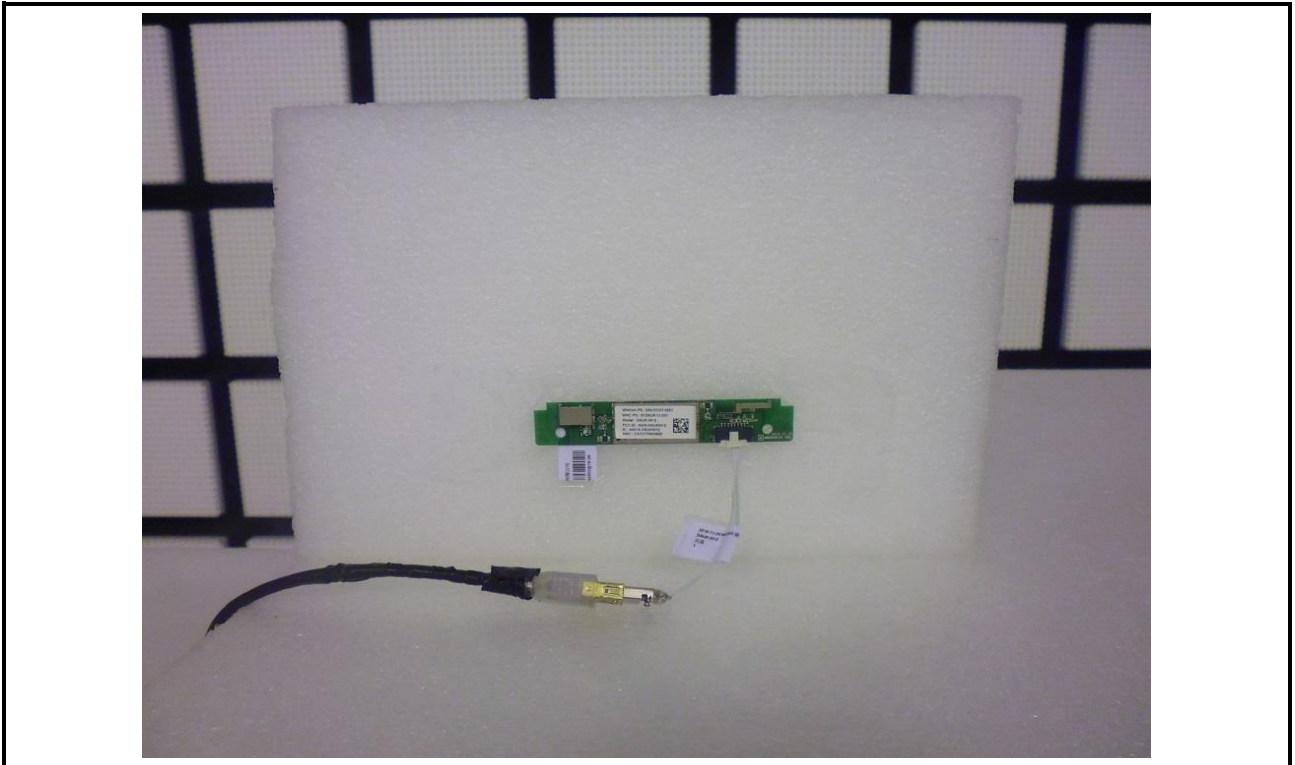
**Radiated Emission Below 1GHz Test (On-board ANT0 + On-board ANT1 mode)**



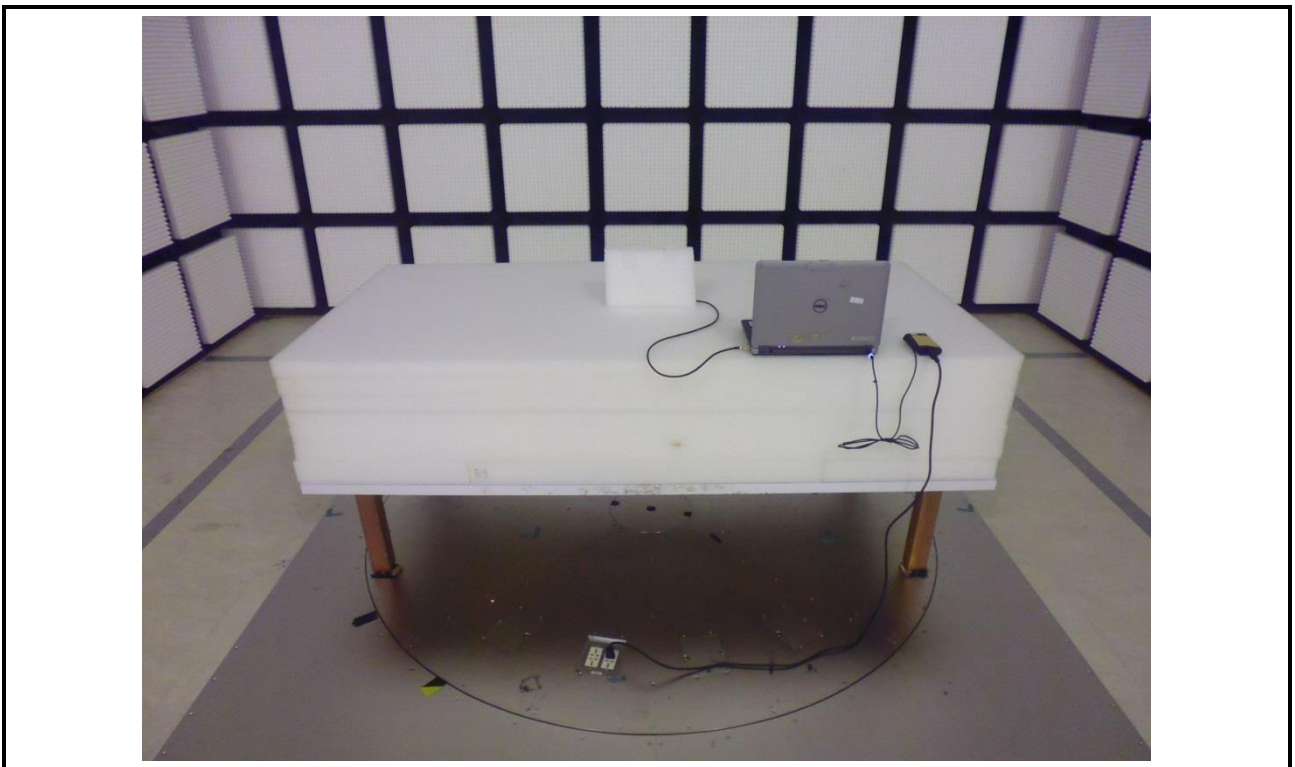
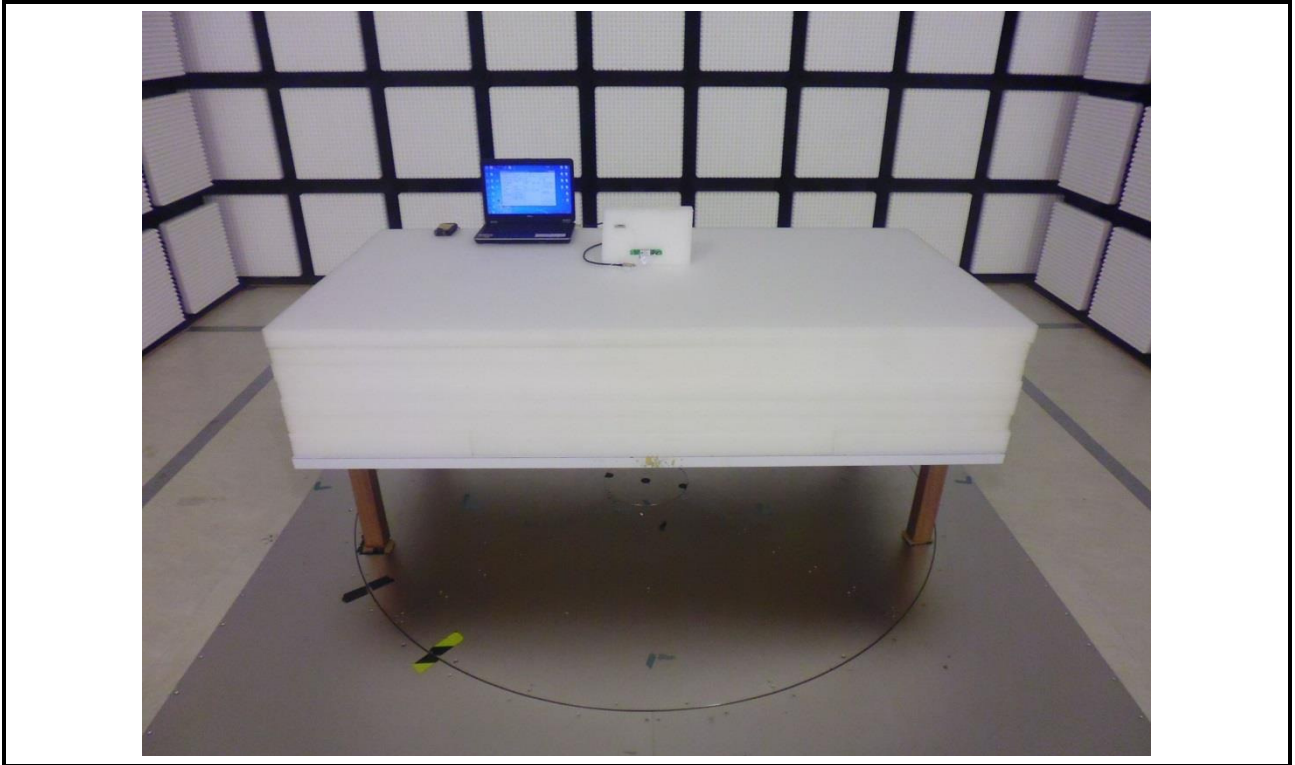
**Radiated Emission Above 1GHz Test (On-board ANT0 + On-board ANT1 mode)**



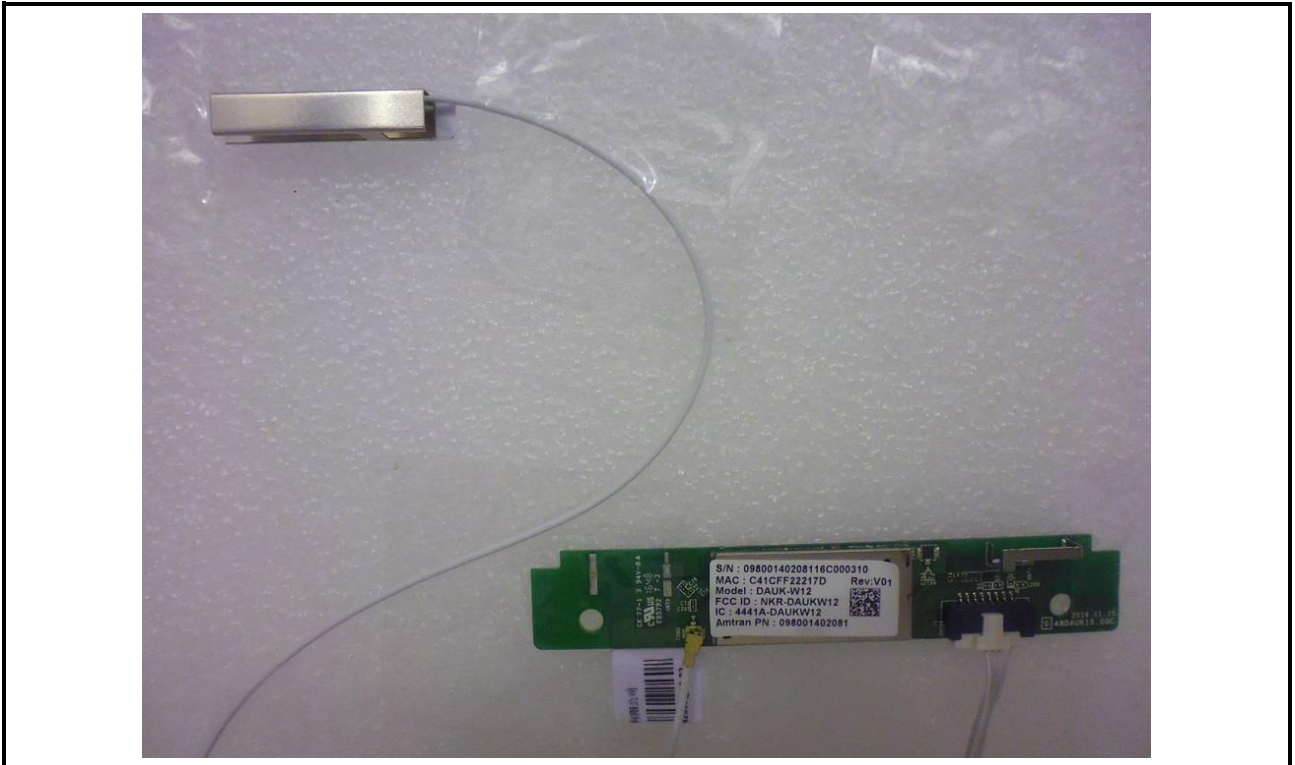
**Radiated Emission Above 1GHz Test (On-board ANT0 + On-board ANT1 mode)**



**Radiated Emission Below 1GHz Test (External-Amtran + On-board ANT1 mode)**

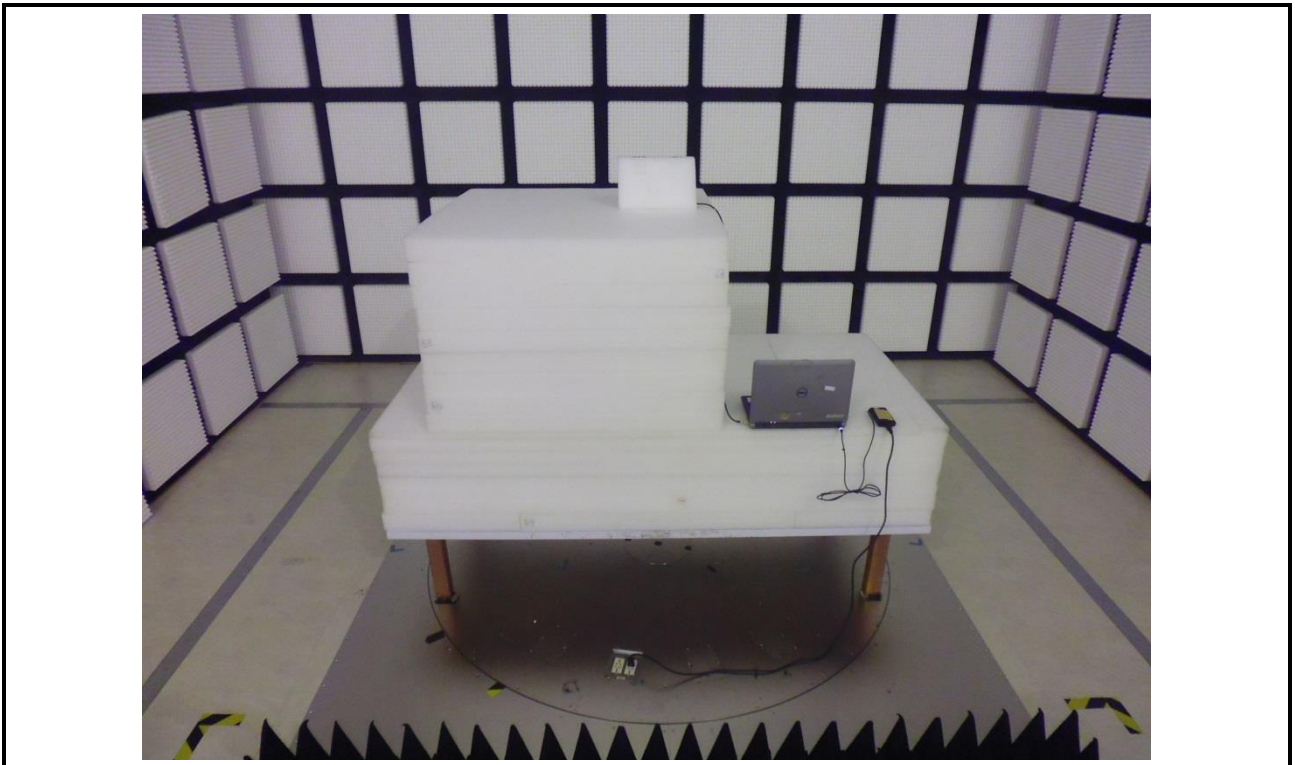
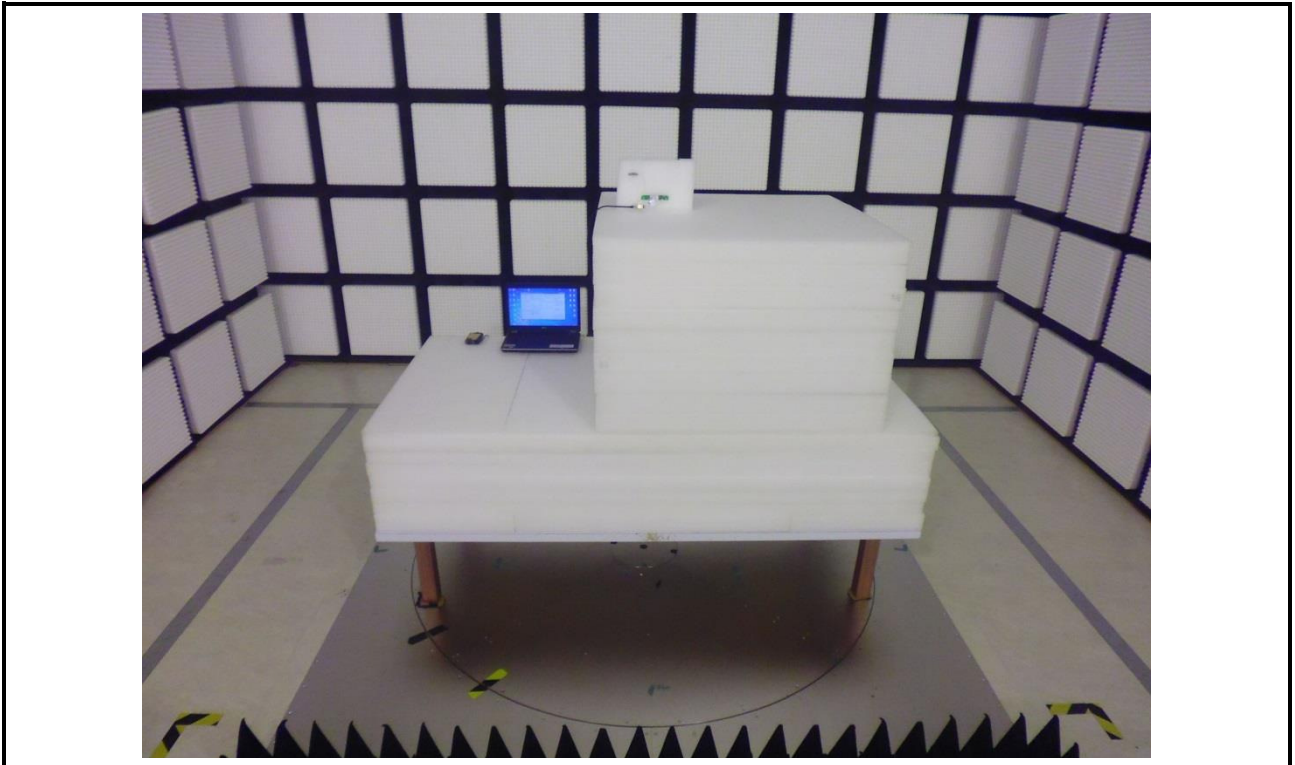


**Radiated Emission Below 1GHz Test (External-Amtran + On-board ANT1 mode)**

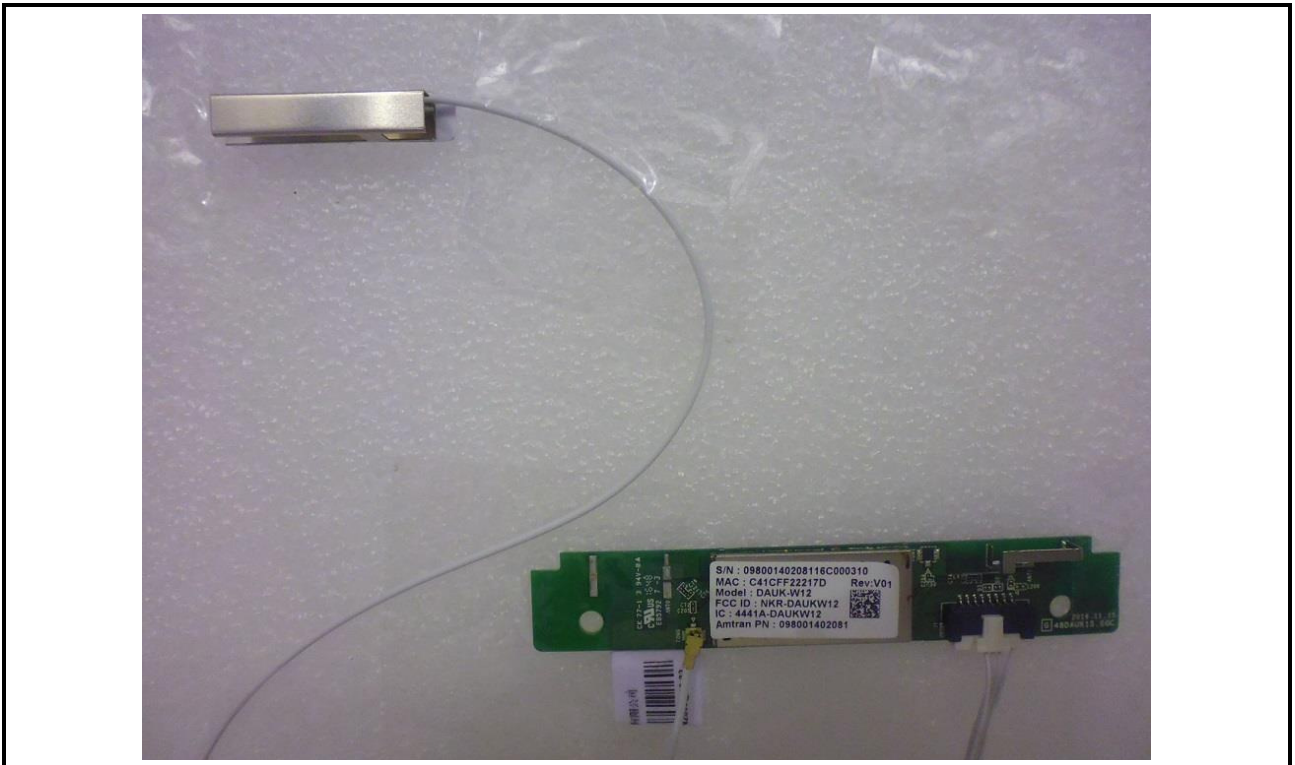
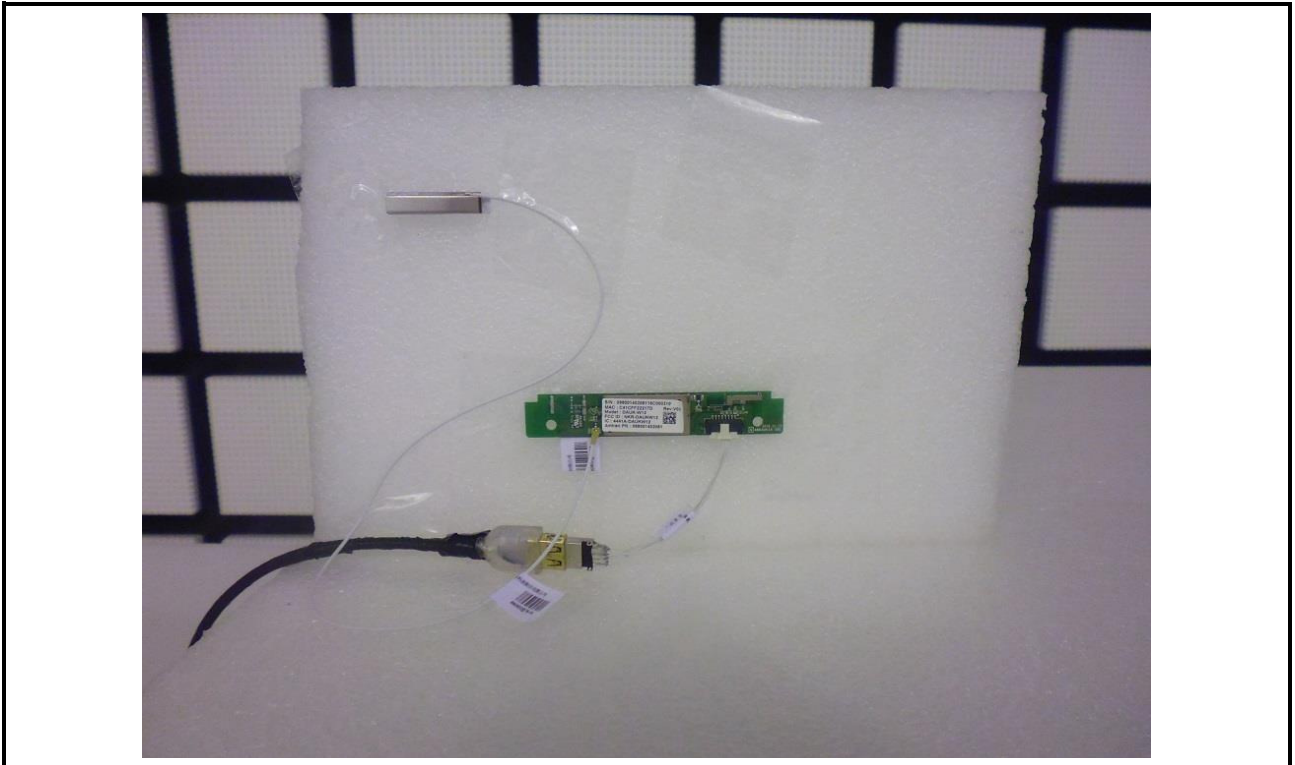




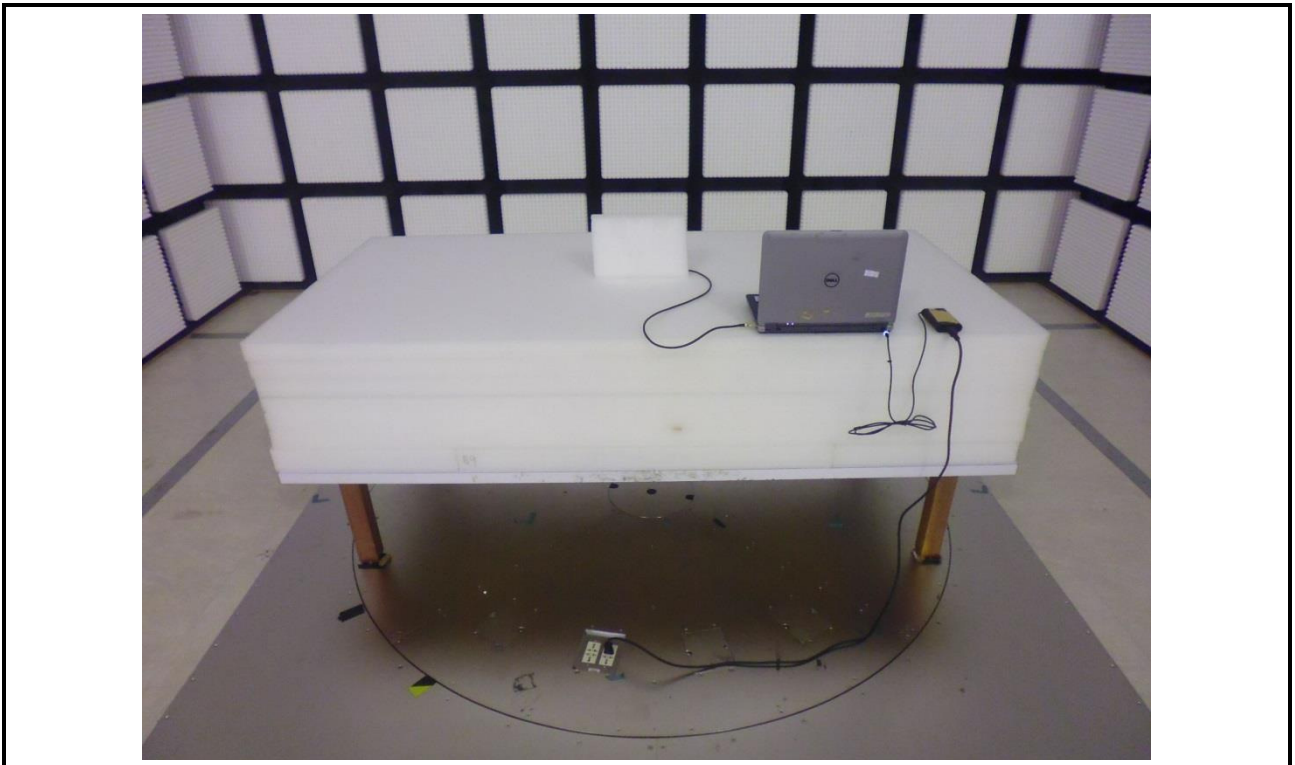
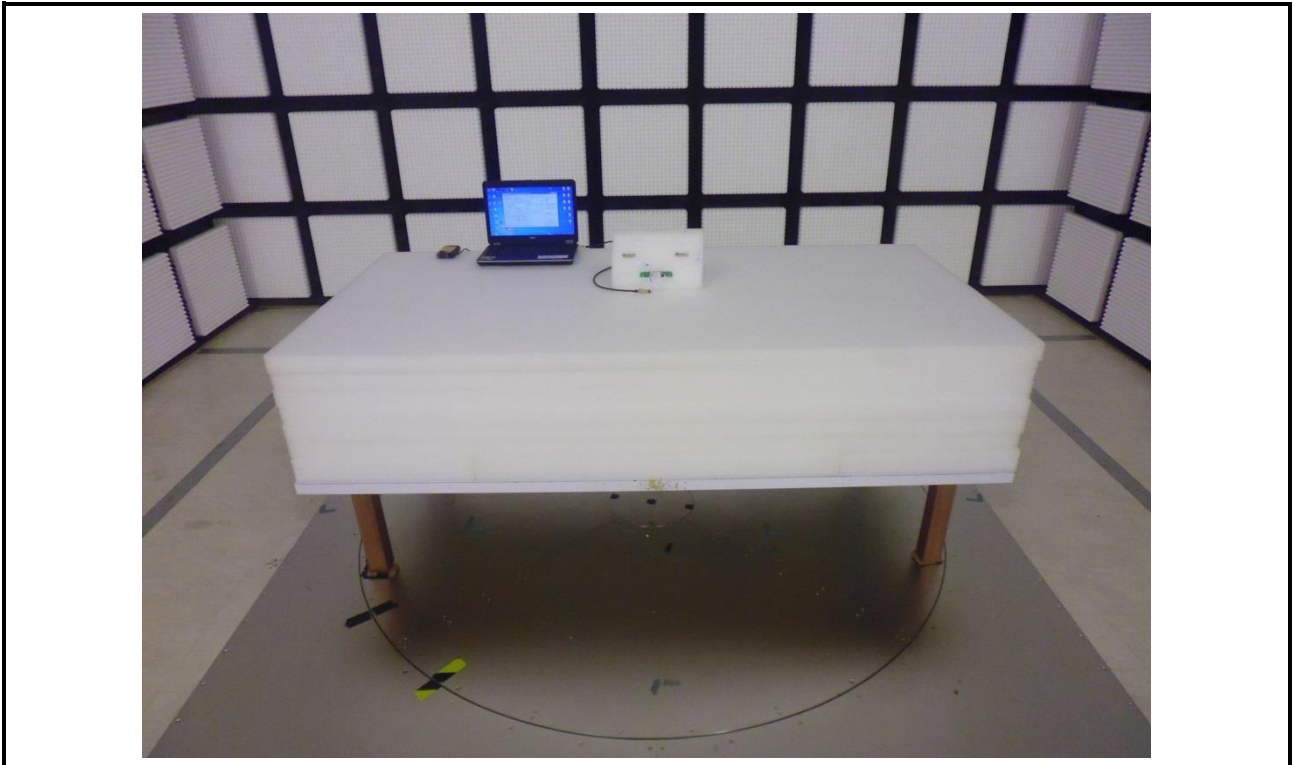
**Radiated Emission Above 1GHz Test (External-Amtran + On-board ANT1 mode)**



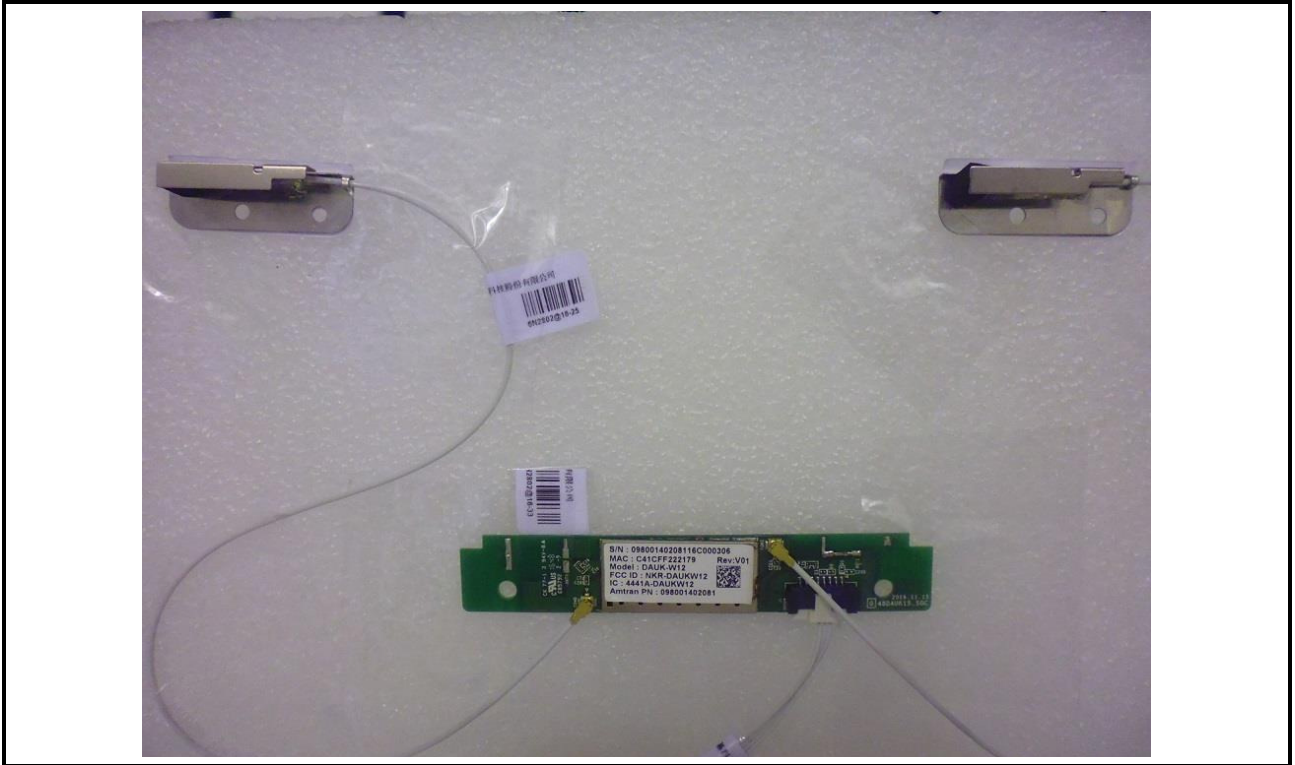
**Radiated Emission Above 1GHz Test (External-Amtran + On-board ANT1 mode)**



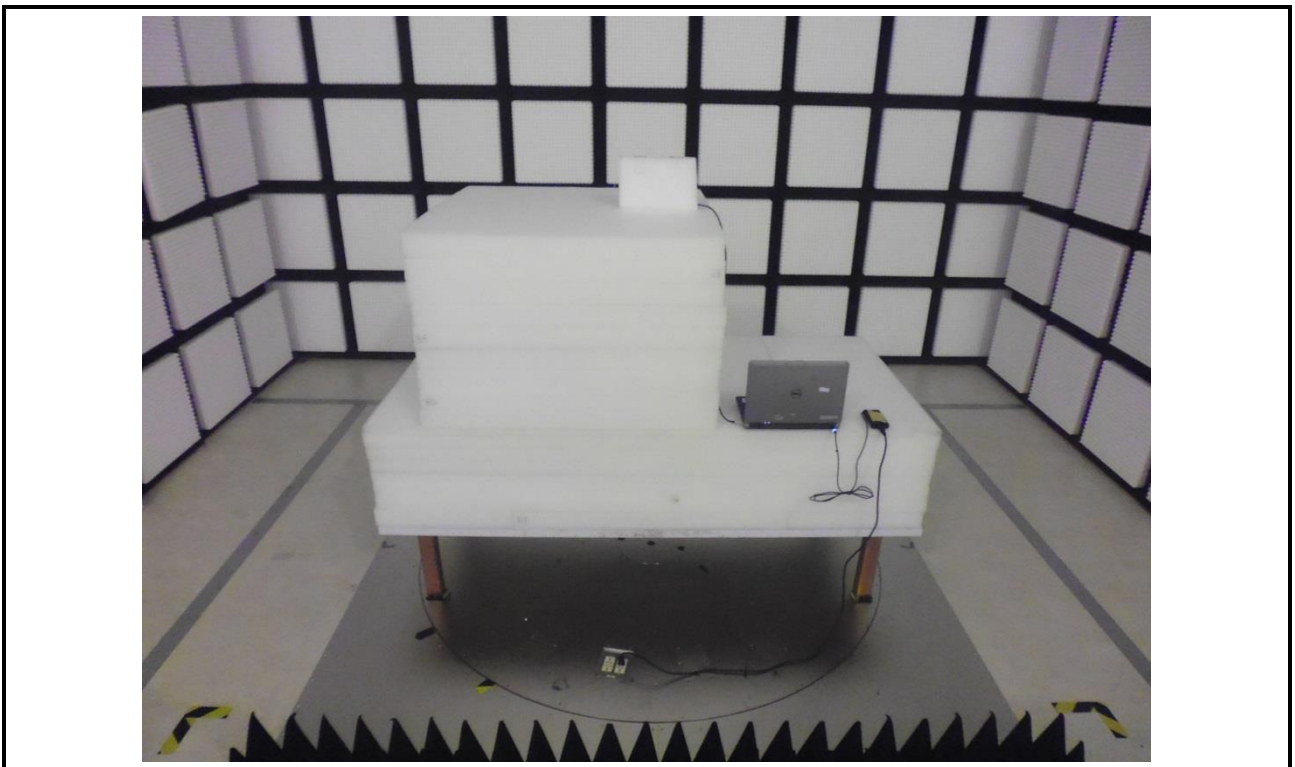
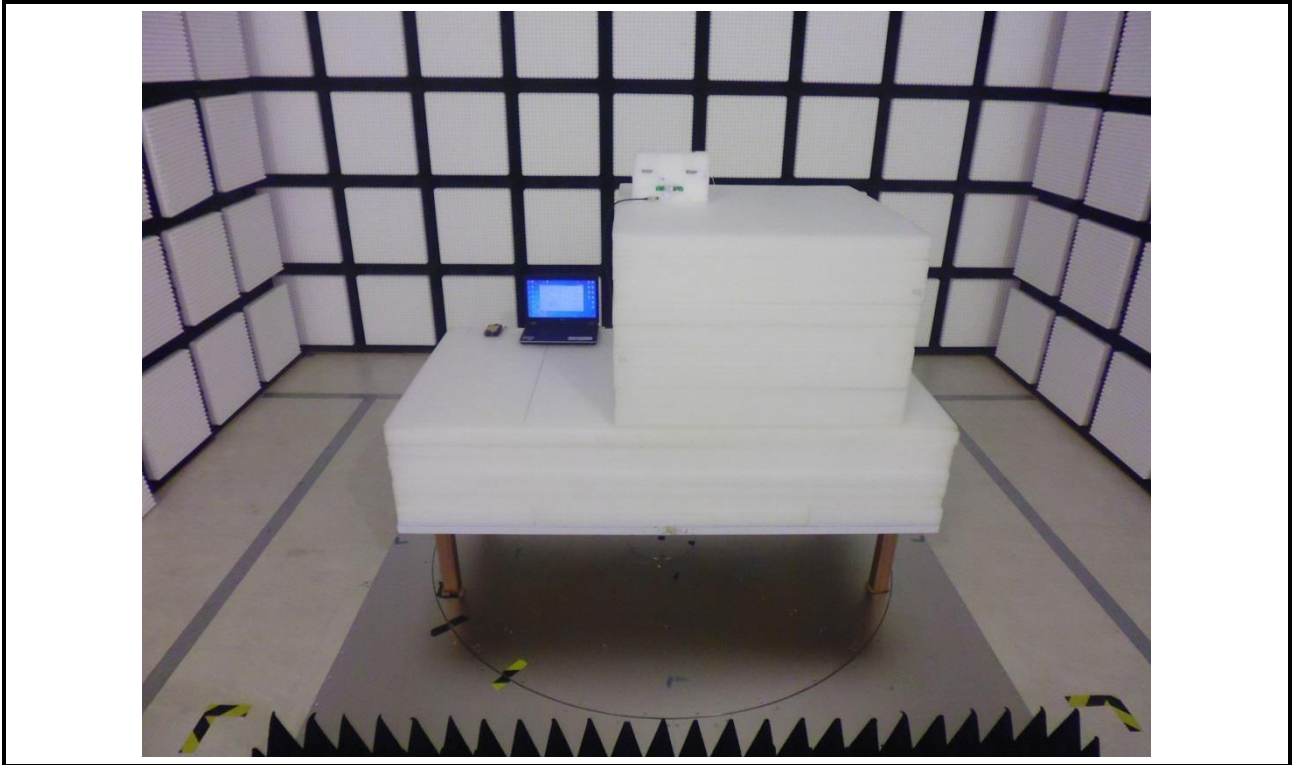
**Radiated Emission Below 1GHz Test  
(External-WNC Antenna (330mm) + External-WNC Antenna (330mm) mode)**



**Radiated Emission Below 1GHz Test  
(External-WNC Antenna (330mm) + External-WNC Antenna (330mm) mode)**



**Radiated Emission Above 1GHz Test  
(External-WNC Antenna (330mm) + External-WNC Antenna (330mm) mode)**



**Radiated Emission Above 1GHz Test  
(External-WNC Antenna (330mm) + External-WNC Antenna (330mm) mode)**

