

# Car Transmitter



## Instructions for model: MV-0313

### FEATURES

The 3-channel transmitter can be used problem-free over the 12 V voltage supply of the cigarette lighter of each passenger car. The transmitter is thereby at the same place and a battery change is no longer necessary always.

Each transmitter is custom encoded and ergonomically designed to be an integral part of your garage door opener system, with two styles to suit your personal preference.

### 1. Using the transmitter

- Put the transmitter into the cigarette lighter of your car (Figure 1). To open or close garage door, press and hold the button (The transmitter has indicator lights). When garage door begins to move release button.
- To stop the garage door during travel, press and hold button until door stops, then release button.
- To continue the garage door travel after stopping it, press and hold the button. Press button once, the door will travel in the opposite direction.

### 2. Multiple Transmitters (Figure 2)

Each car transmitter comes factory programmed with random codes. The car transmitter code can be changed in order to match the code of an "active" transmitter, which you are already using. Below are instructions for transferring an active code from a button on one transmitter to a button of your choice on the car transmitter.

- Connect the transmitter with active code to the car transmitter using the programming cable (fig. 2A).
- Press and hold the selected channel button on the transmitter with the active code (fig. 2B). The light in the transmitter illuminates.
- Press and hold the respective channel button on the car transmitter (fig. 2C). The light in the transmitter initially starts blinking and then illuminates continuously after 1-2 sec. Code transfer is completed.
- Programming cable can be removed and both transmitters can now be used to operate the same door.

*Note: For multi-button transmitters, be sure to carry out this procedure for all the buttons you desire to use.*

### 3. Changing the Code on Transmitters (Figure 3)

The transmitter factory preset code can be changes as follows:

- Connect the programming cable into the lateral socket of the car transmitter to change the code.
- Short one of the outer pins of the programming cable with the middle pin.
- Press and hold the respective channel button. The light will blink rapidly for approx. 5 sec. Release the button after the light illuminates continuously. Then remove the programming cable.

*Note: Be sure to carry out this procedure for all the buttons you desire to use.*

Figure 1. Using Transmitter

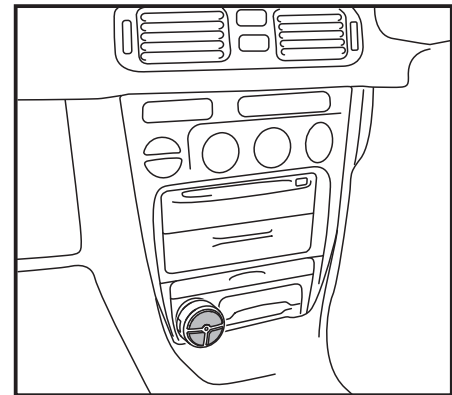


Figure 2. Multiple Transmitters-Code Transfer

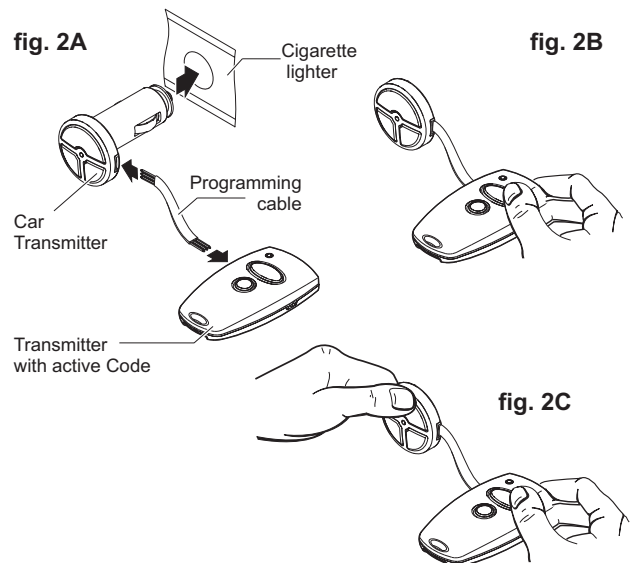
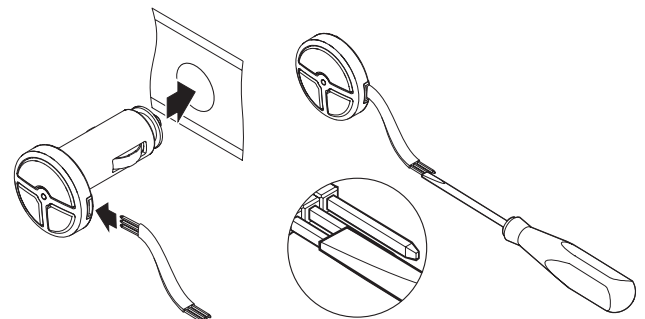


Figure 3. Code Changing



FCC Certified: This device complies with Part 15 of the FCC rules. Operation is subject to the following two conditions: (1) this device may not cause harmful interference, and (2) this device must accept any interference received, including interference that may cause undesired operation. Changes or modifications not expressly approved by the party responsible for compliance could void the user's authority to operate the equipment.

## Instructions (continued)

### 4. Multiple Transmitters (Figure 3)

Each transmitter comes factory programmed with random codes. 2-channel transmitters have 2 different random codes, one per button, 3-channel transmitters have 3 different random codes and 4-channel transmitters have 4 different random codes, one per button. Transmitters that are purchased separately as accessories have random codes that must be changed in order to match the code of the "active" transmitter, which you are already using. Below are instructions for transferring an active code from a button on one transmitter to a button of your choice on another transmitter.

- Connect the transmitter with active code to the new transmitter using the programming connector (fig. 3A).
- Press and hold the selected channel button on the transmitter with the active code (fig. 3B). The light in the transmitter illuminates.
- Press and hold the respective channel button on the new transmitter (fig. 3C). The light in the transmitter initially starts blinking and then illuminates continuously after 1-2 sec. Code transfer is completed.
- Programming connector can be removed and both transmitters can now be used to operate the same door.

*Note: For multi-button transmitters, be sure to carry out this procedure for all the buttons you desire to use.*

### 5. Changing the Code on Transmitters (Figure 4)

The transmitter factory preset code can be changed as follows:

- Connect the programming connector into the lateral socket of the transmitter to change the code.
- Short one of the outer pins of the programming connector with the middle pin.
- Press and hold the respective channel button. The light will blink rapidly for approx. 5 sec. Release the button after the light illuminates continuously. Then remove the programming connector.

*Note: For multi-button transmitters, be sure to carry out this procedure for all the buttons you desire to use.*

Figure 3. Multiple Transmitters-Code Transfer

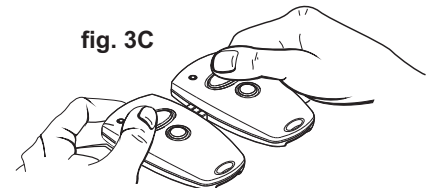
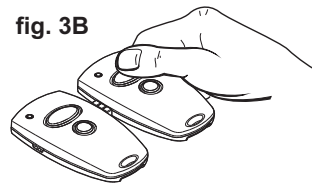
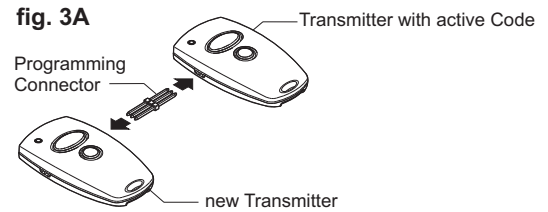
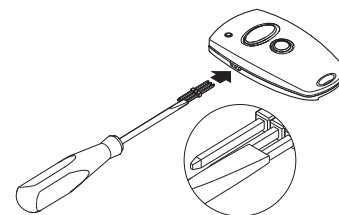


Figure 4. Code Changing



FCC Certified: This device complies with Part 15 of the FCC rules. Operation is subject to the following two conditions: (1) this device may not cause harmful interference, and (2) this device must accept any interference received, including interference that may cause undesired operation. Changes or modifications not expressly approved by the party responsible for compliance could void the user's authority to operate the equipment.