

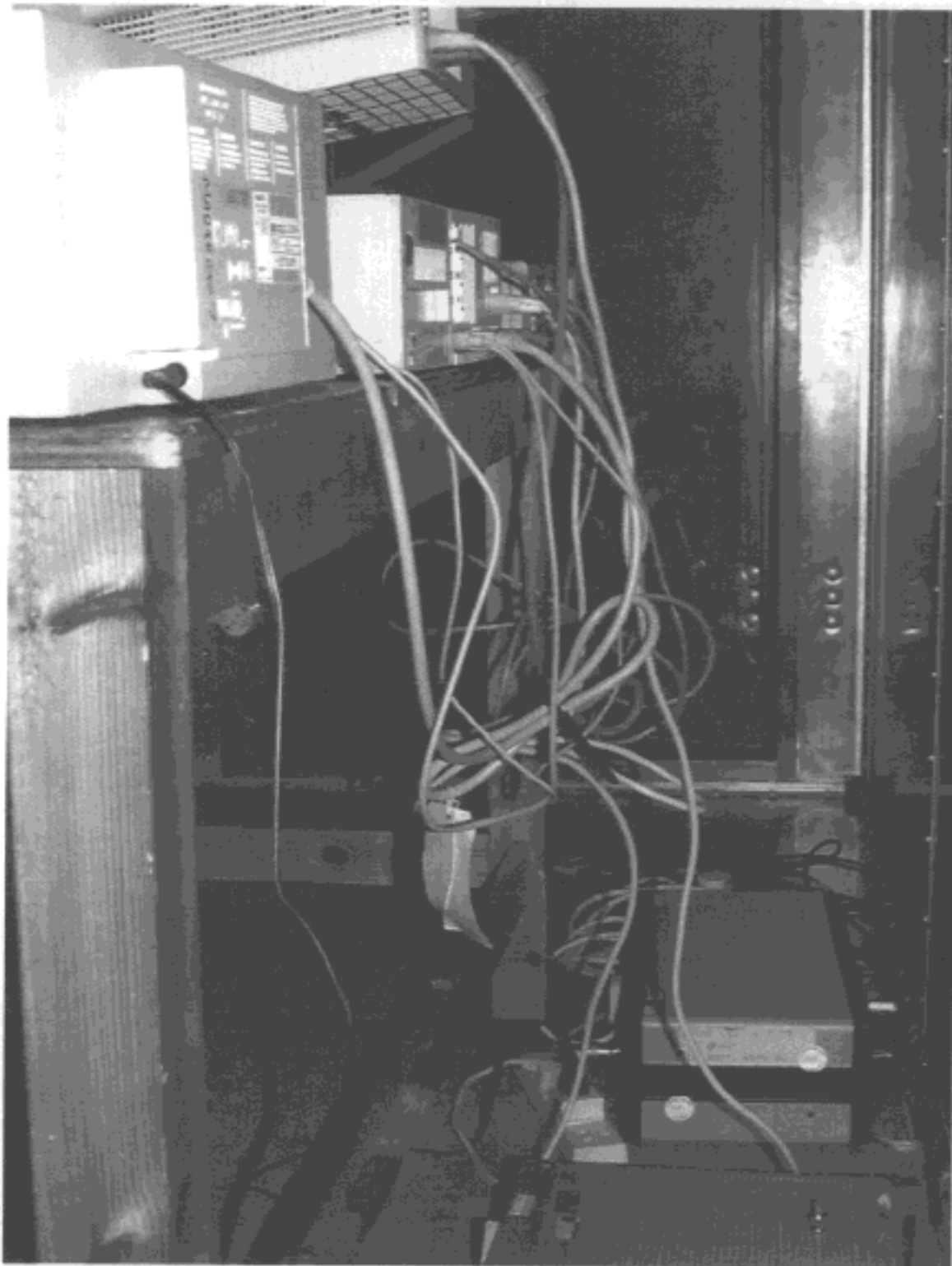
RADIO FREQUENCY INVESTIGATION LTD.

TEST REPORT
Photograph Section

EMC Department

Test Of: Madge Networks Ltd.
PCI-3 Card
To: F.C.C. Part 15: 1996 Class B

PHT\36498\001 Rear view of conducted emissions, UTP cable.



RADIO FREQUENCY INVESTIGATION LTD.

TEST REPORT
Photograph Section

EMC Department

Test Of: Madge Networks Ltd.
PCI-3 Card
To: F.C.C. Part 15: 1996 Class B

PHT\36498\002 Front view of conducted emissions, UTP cable.



RADIO FREQUENCY INVESTIGATION LTD.

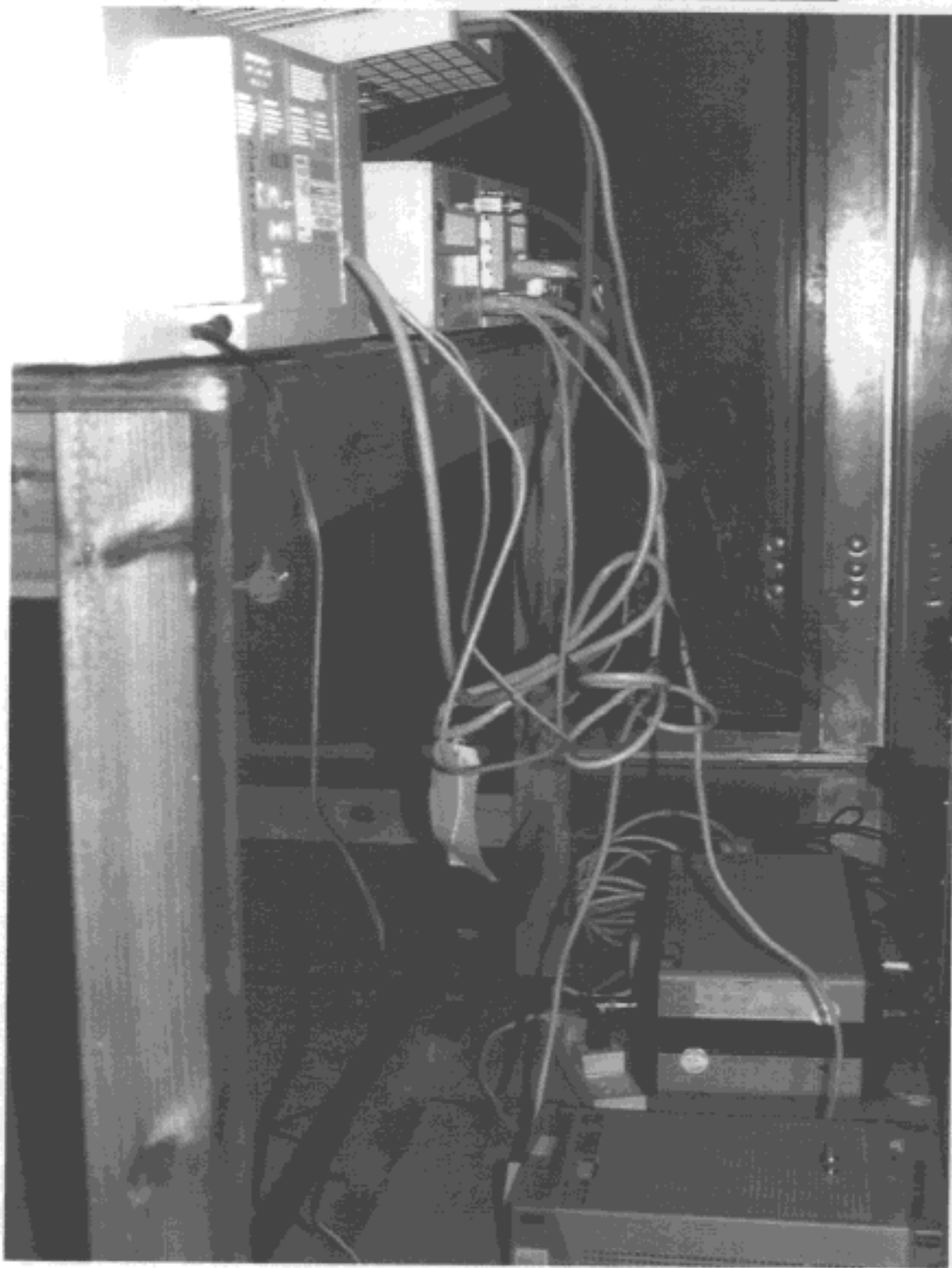
**TEST REPORT
Photograph Section**

EMC Department

**Test Of: Madge Networks Ltd.
PCI-3 Card**

To: F.C.C. Part 15: 1996 Class B

PHT\36498\003 Rear view of conducted emissions, IBM STP cable.



RADIO FREQUENCY INVESTIGATION LTD.

TEST REPORT
Photograph Section

EMC Department

Test Of: Madge Networks Ltd.
PCI-3 Card

To: F.C.C. Part 15: 1996 Class B

PHT\36498\004 Front view of conducted emissions, IBM STP cable.



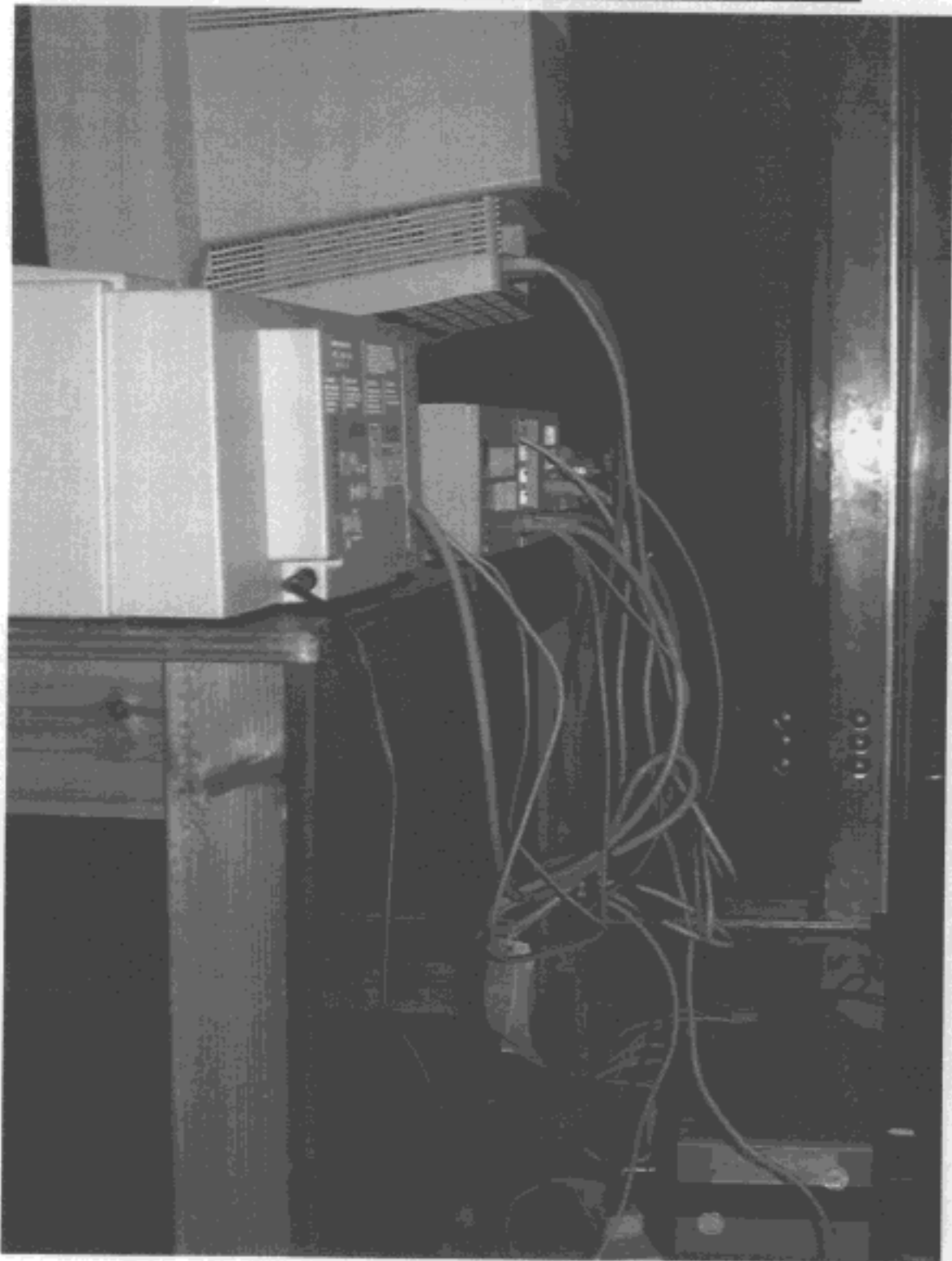
RADIO FREQUENCY INVESTIGATION LTD.

TEST REPORT
Photograph Section

EMC Department

Test Of: Madge Networks Ltd.
PCI-3 Card
To: F.C.C. Part 15: 1996 Class B

PHT\36498\005 Rear view of conducted emissions, CAT 5 STP cable.



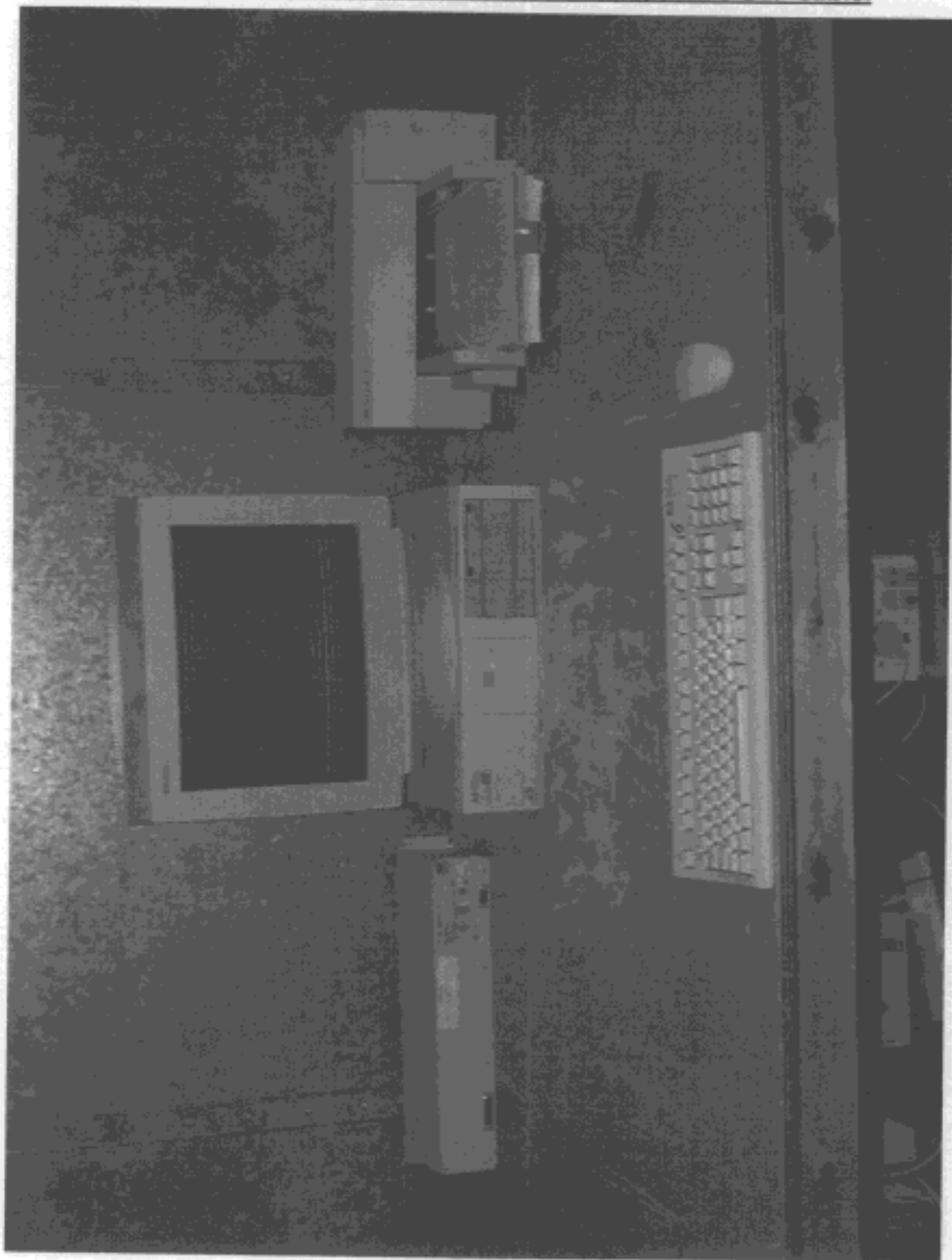
RADIO FREQUENCY INVESTIGATION LTD.

TEST REPORT
Photograph Section

EMC Department

Test Of: Madge Networks Ltd.
PCI-3 Card
To: F.C.C. Part 15: 1996 Class B

PHT\36498\006 Front view of conducted emissions, CAT 5 STP cable.



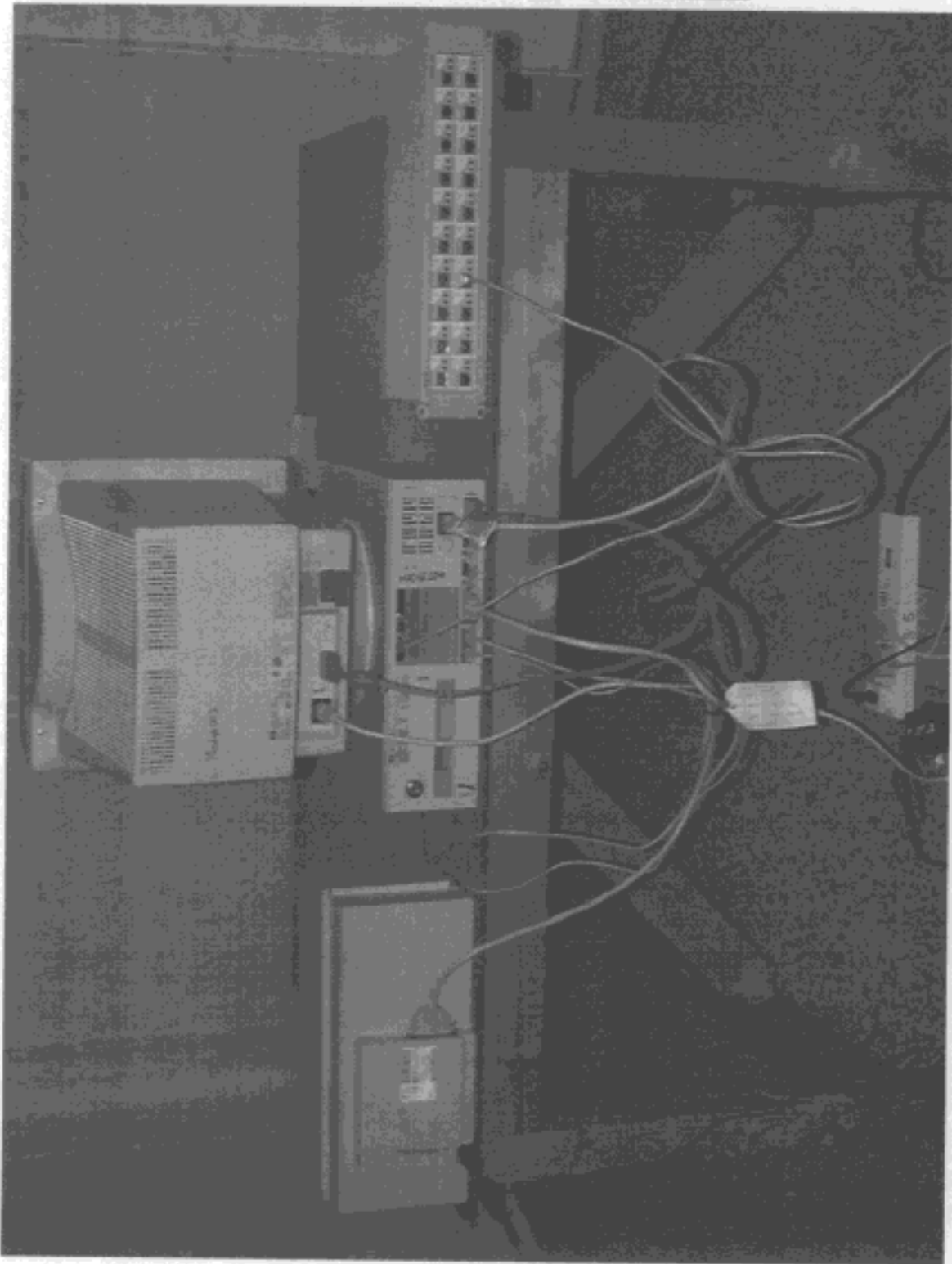
RADIO FREQUENCY INVESTIGATION LTD.

TEST REPORT
Photograph Section

EMC Department

Test Of: Madge Networks Ltd.
PCI-3 Card
To: F.C.C. Part 15: 1996 Class B

PHT\36498\007 Rear view of radiated emissions, UTP cable.



RADIO FREQUENCY INVESTIGATION LTD.

TEST REPORT
Photograph Section

EMC Department

Test Of: Madge Networks Ltd.
PCI-3 Card

To: F.C.C. Part 15: 1996 Class B

PHT\36498\008 Front view of radiated emissions, UTP cable



RADIO FREQUENCY INVESTIGATION LTD.

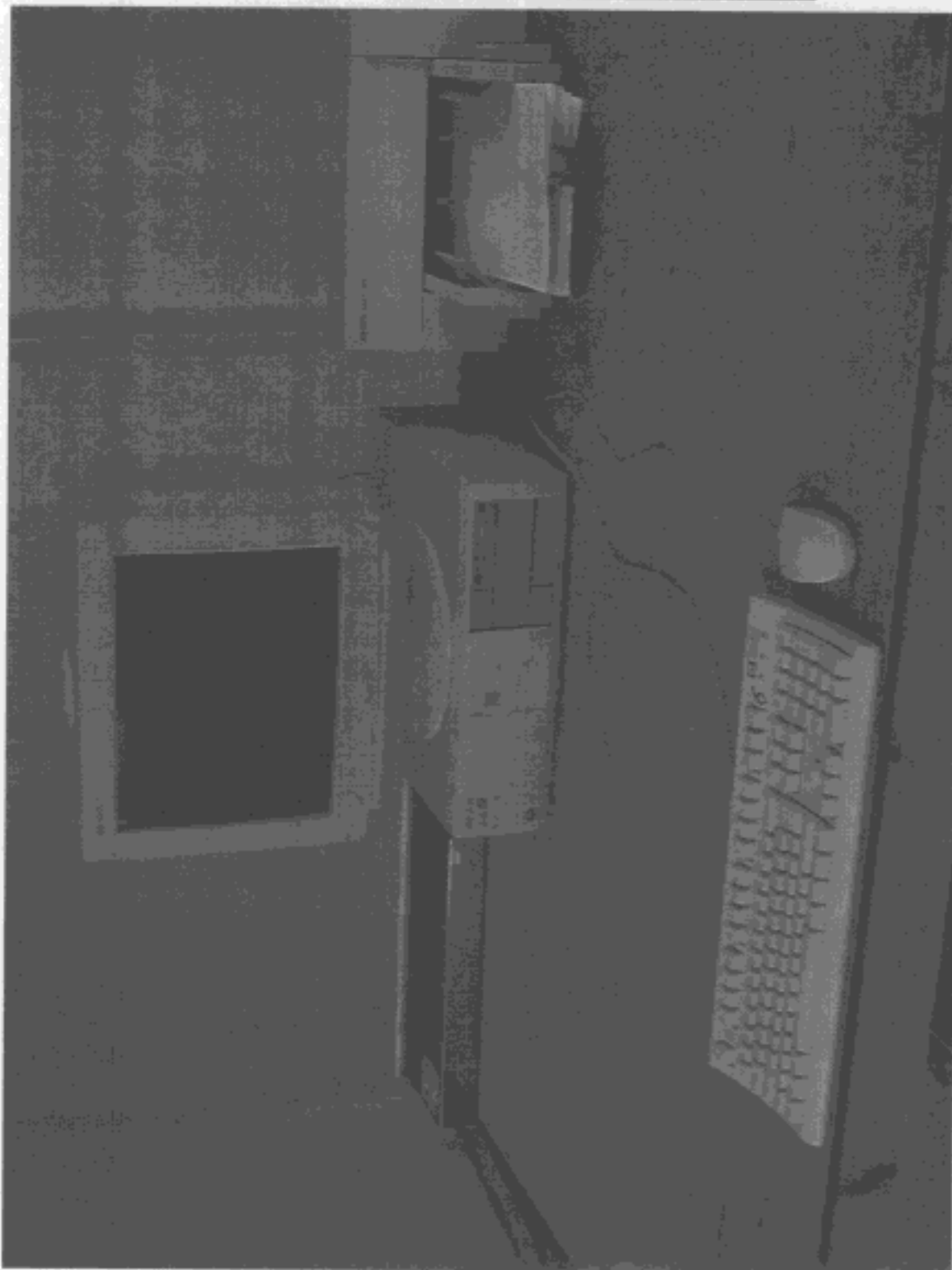
**TEST REPORT
Photograph Section**

EMC Department

**Test Of: Madge Networks Ltd.
PCI-3 Card**

To: F.C.C. Part 15: 1996 Class B

PHT\36498\009 Front view of radiated emissions, IBM STP cable.



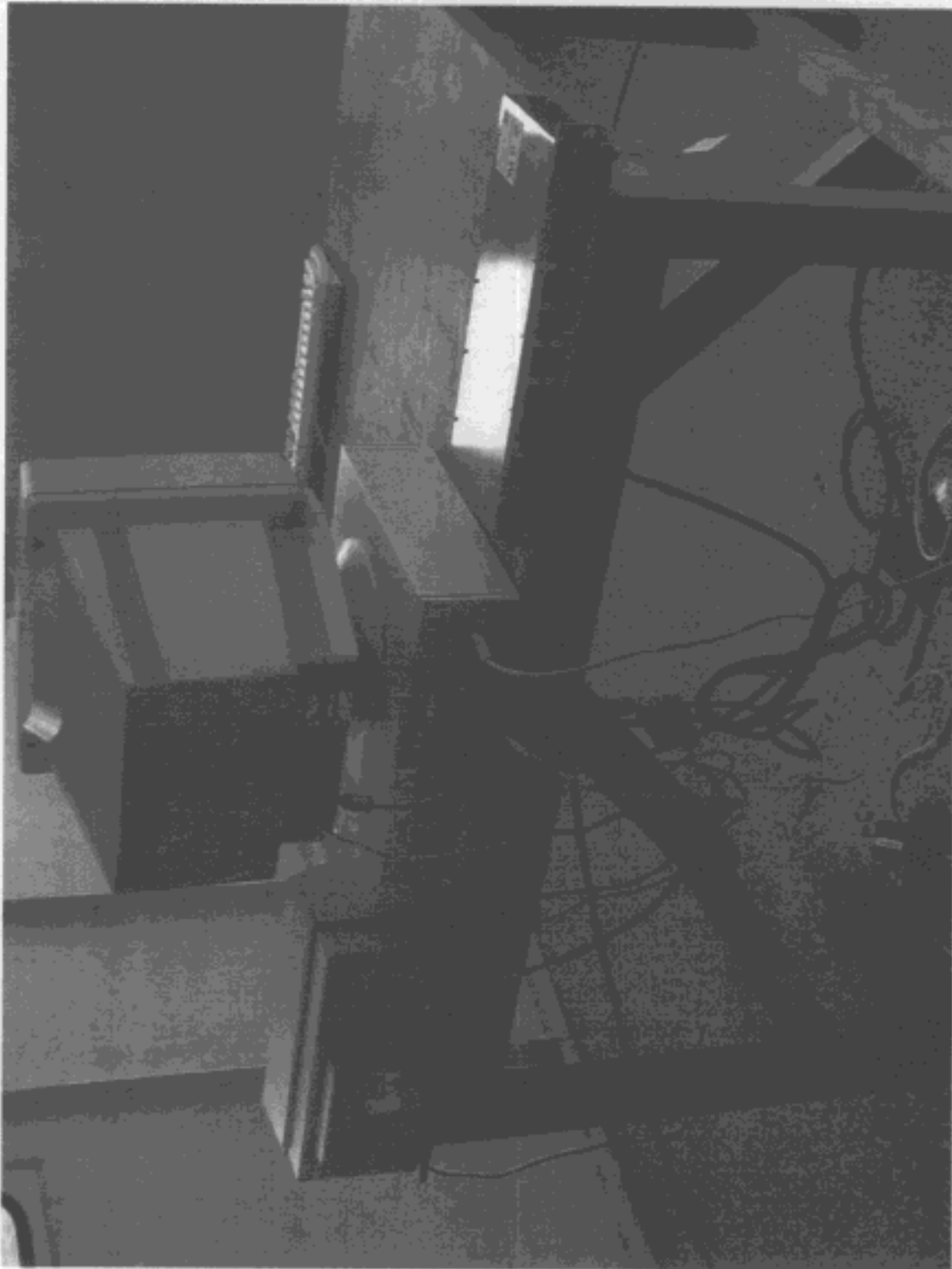
RADIO FREQUENCY INVESTIGATION LTD.

**TEST REPORT
Photograph Section**

EMC Department

**Test Of: Madge Networks Ltd.
PCI-3 Card**
To: F.C.C. Part 15: 1996 Class B

PHT\36498\010 Rear view of radiated emissions, IBM STP cable.



RADIO FREQUENCY INVESTIGATION LTD.

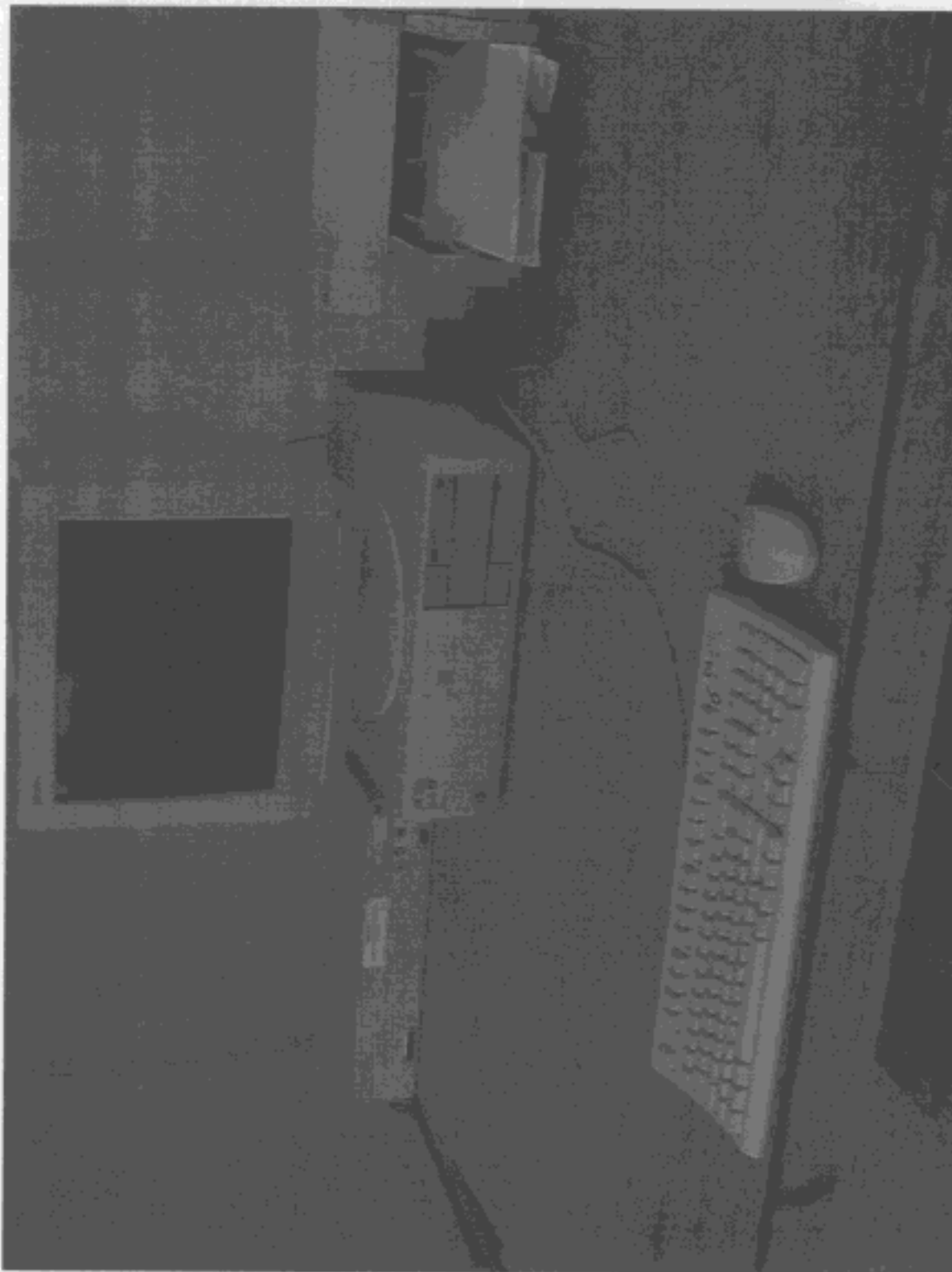
TEST REPORT
Photograph Section

EMC Department

Test Of: Madge Networks Ltd.
PCI-3 Card

To: F.C.C. Part 15: 1996 Class B

PHT36498\011 Front view of radiated emissions, CAT 5 STP cable.



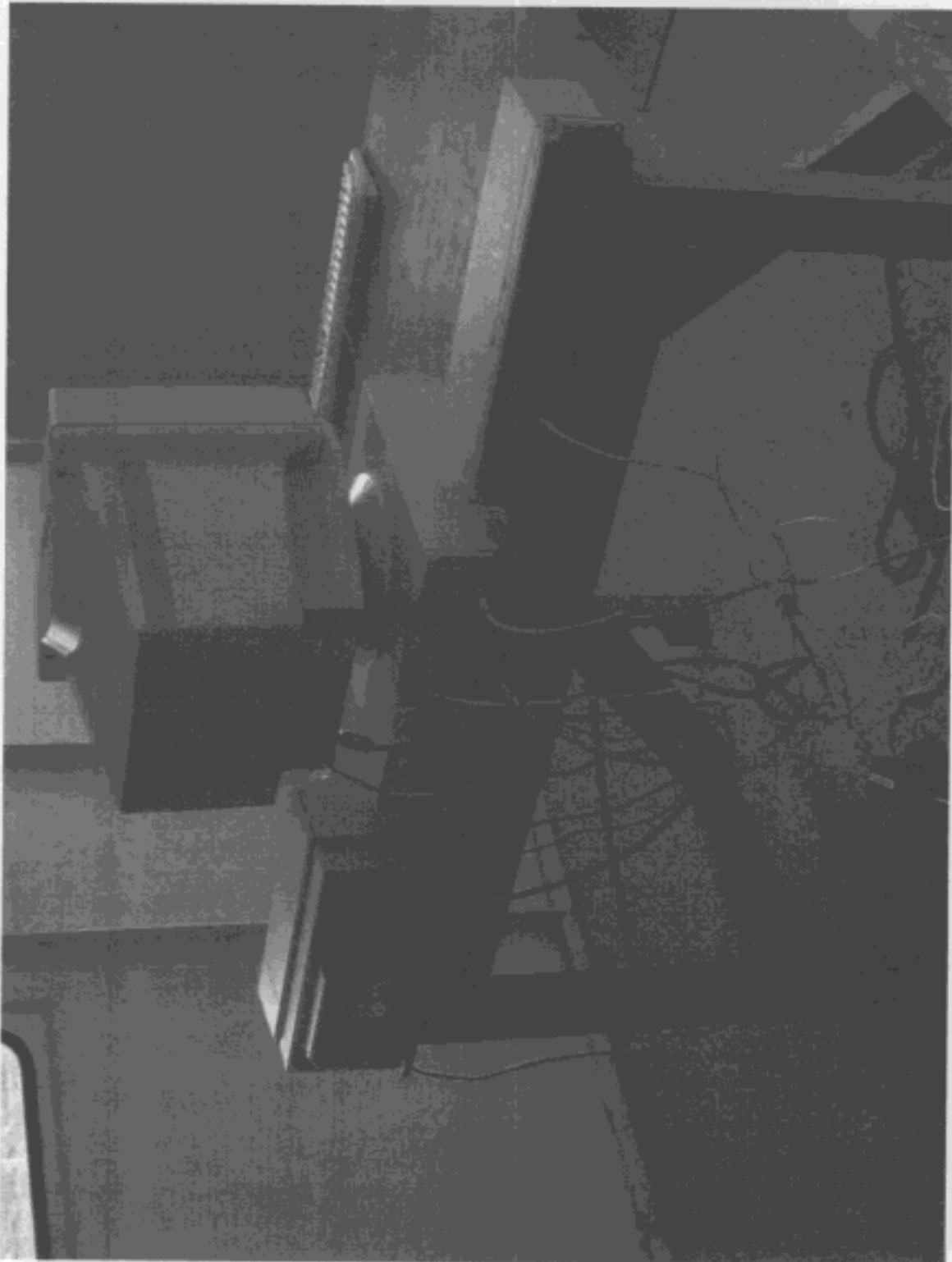
RADIO FREQUENCY INVESTIGATION LTD.

TEST REPORT
Photograph Section

EMC Department

Test Of: Madge Networks Ltd.
PCI-3 Card
To: F.C.C. Part 15: 1996 Class B

PHT\36498\012 Rear view of radiated emissions, CAT 5 STP cable.



RADIO FREQUENCY INVESTIGATION LTD.

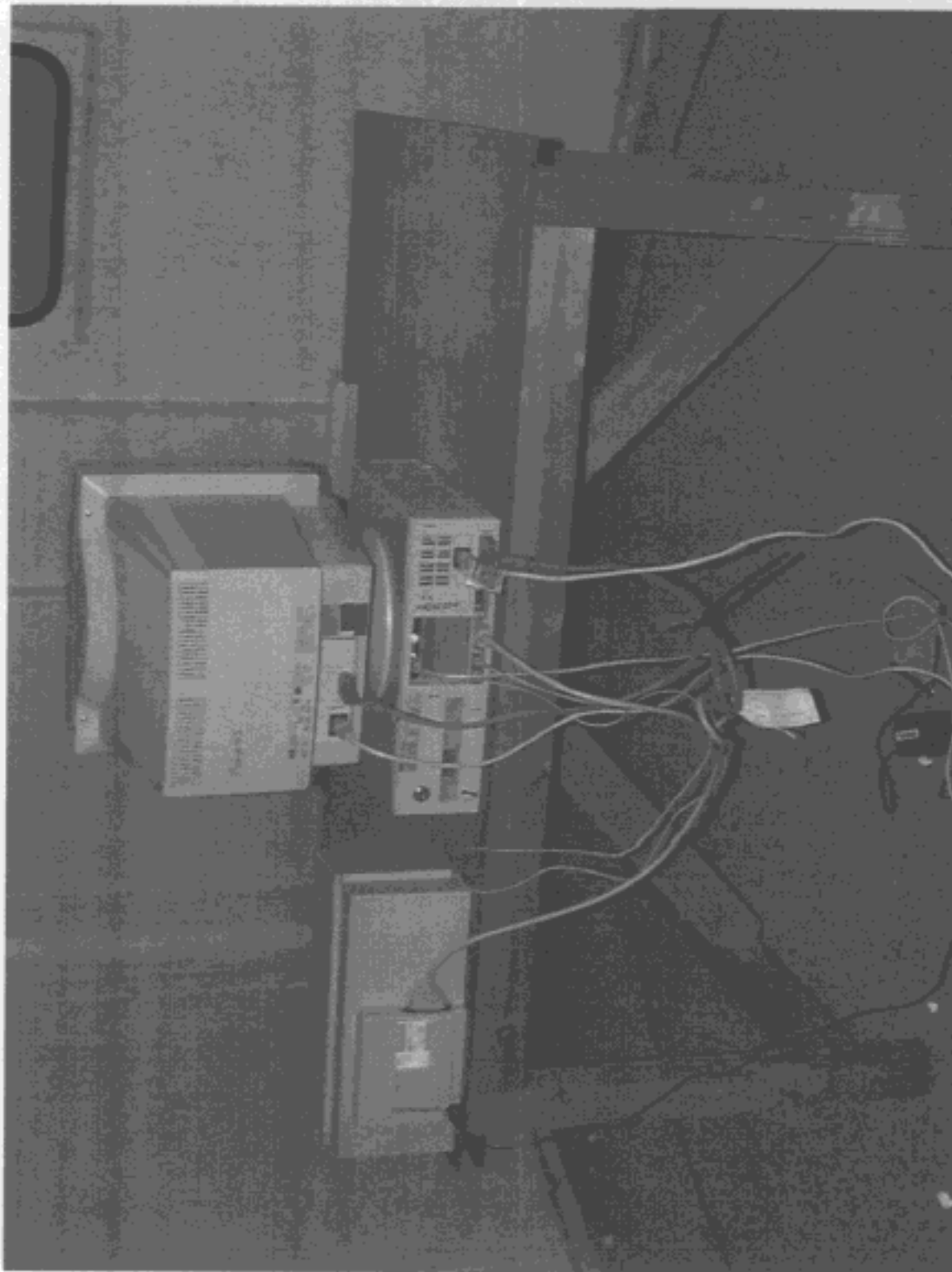
TEST REPORT
Photograph Section

EMC Department

Test Of: Madge Networks Ltd.
PCI-3 Card

To: F.C.C. Part 15: 1996 Class B

PHT36498\013 Rear view of radiated emissions, UTP cable with remote network



RADIO FREQUENCY INVESTIGATION LTD.

TEST REPORT
Photograph Section

EMC Department

Test Of: Madge Networks Ltd.
PCI-3 Card
To: F.C.C. Part 15: 1996 Class B

PHT36498\014 Front view of radiated emissions, UTP cable with remote network

