

MADE NETWORKS LTD.
 SEFTON PARK
 SEALS WALK
 SLOUGH SL4 4J5
 ENGLAND, UK
TEL: 01353 69000

PROJECT: ANISSOS
SHEET: 2 OF 6
ISSUE: 08

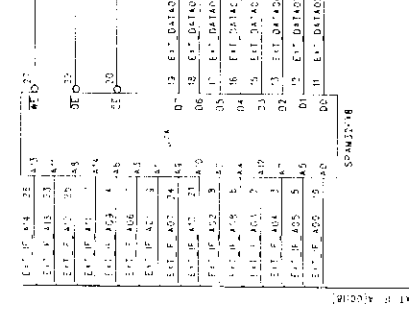
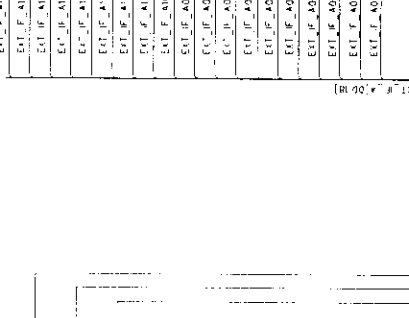
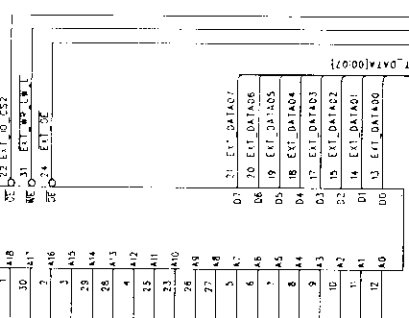
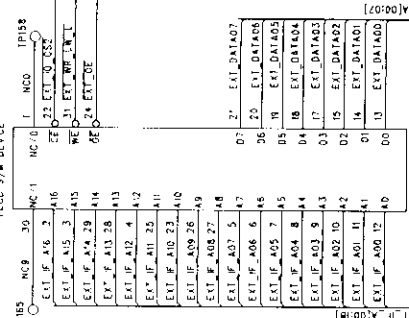
DRAWN BY: M. SMITH
DATE: NOV1997
DRAWING NO: 991-314

PCI-3
 COMPONENT LIST FOR MADE NETWORKS LTD.

76, HOV1997
 2411

USA NOT FITTED
FLASHS/SINAR
HPC/HOLE DEVICE

USA NOT FITTED
FLASHS/SINAR
HPC/HOLE DEVICE



EXT. F. A07
EXT. F. A08
EXT. F. A09
EXT. F. A10
EXT. F. A11
EXT. F. A12
EXT. F. A13
EXT. F. A14
EXT. F. A15
EXT. F. A16
EXT. F. A17
EXT. F. A18

USA NOT FITTED
FLASHS/SINAR
HPC/HOLE DEVICE

USA NOT FITTED
FLASHS/SINAR
HPC/HOLE DEVICE

USA NOT FITTED
FLASHS/SINAR
HPC/HOLE DEVICE

USA NOT FITTED
FLASHS/SINAR
HPC/HOLE DEVICE

EXT. DATA0
EXT. DATA1
EXT. DATA2
EXT. DATA3
EXT. DATA4
EXT. DATA5
EXT. DATA6
EXT. DATA7
EXT. DATA8
EXT. DATA9
EXT. DATA10

PCI-3

Copyright © 1998 ADONIS NETWORKS LTD.

DATE: 16-NOV-1997

DATE: NOV1997

DATE: 16-NOV-1997

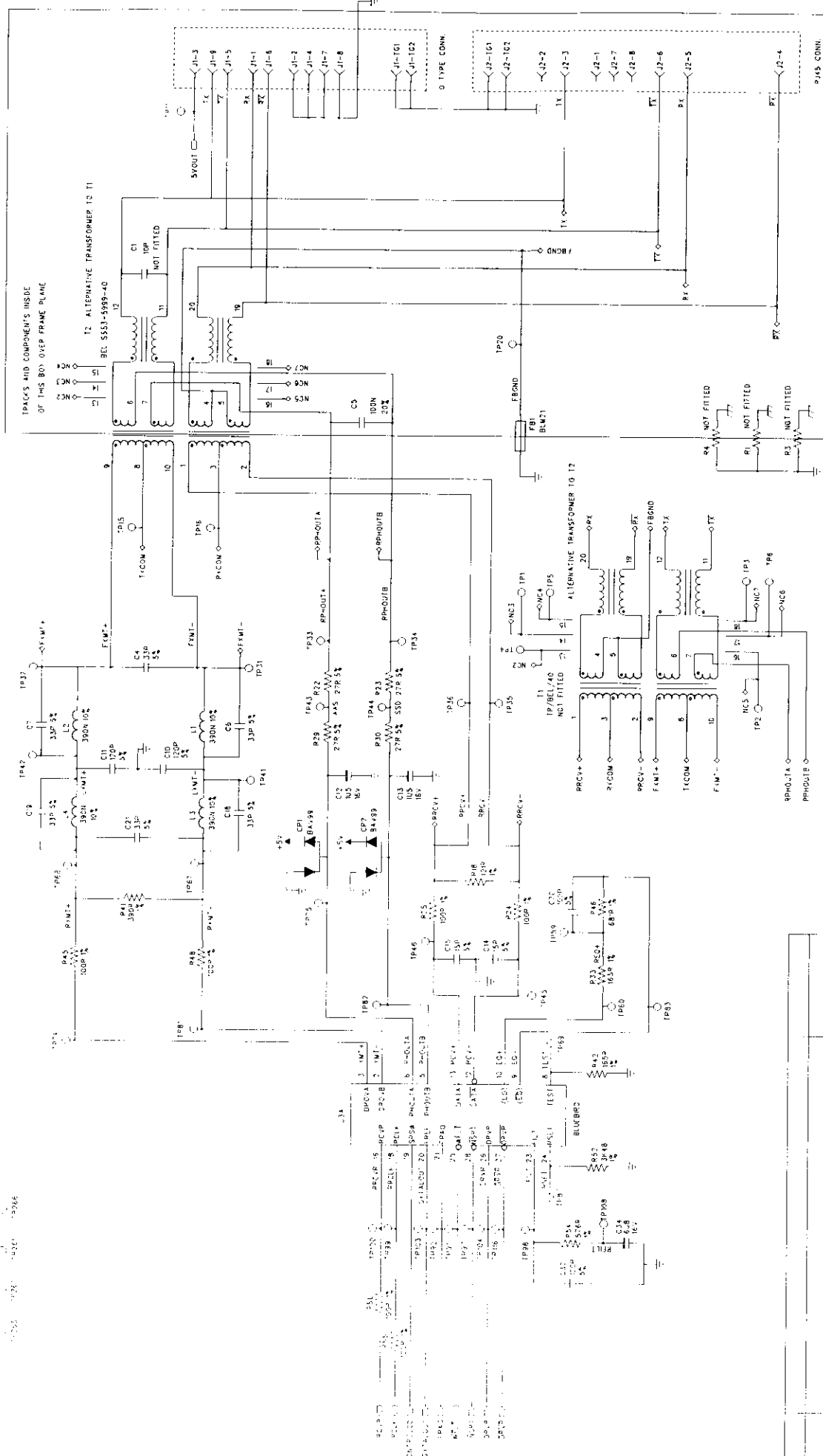
PROJECT: MMS505


SHEET: 3 OF 8

ISSUE: 03

ADONIS NETWORKS LTD.
SECTION PARK
EGLY MANS
SLOUGH, SL2 4LS
ENGLAND, UK
TEL: 0753 60000
FAX: 0753 60001

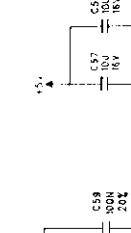
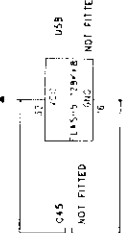
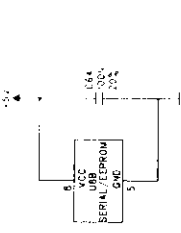
1. ALL DIMENSIONS ARE IN MILLIMETERS UNLESS OTHERWISE SPECIFIED.
 2. DIMENSIONS ARE TO CENTER UNLESS OTHERWISE SPECIFIED.
 3. DIMENSIONS ARE TO FACE UNLESS OTHERWISE SPECIFIED.
 4. DIMENSIONS ARE TO CENTER UNLESS OTHERWISE SPECIFIED.
 5. DIMENSIONS ARE TO FACE UNLESS OTHERWISE SPECIFIED.
 6. DIMENSIONS ARE TO CENTER UNLESS OTHERWISE SPECIFIED.
 7. DIMENSIONS ARE TO FACE UNLESS OTHERWISE SPECIFIED.
 8. DIMENSIONS ARE TO CENTER UNLESS OTHERWISE SPECIFIED.
 9. DIMENSIONS ARE TO FACE UNLESS OTHERWISE SPECIFIED.
 10. DIMENSIONS ARE TO CENTER UNLESS OTHERWISE SPECIFIED.



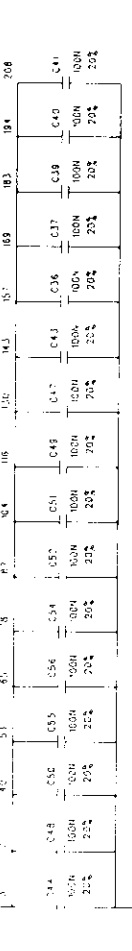
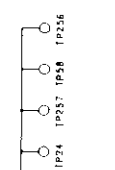
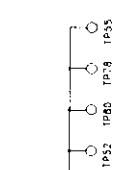
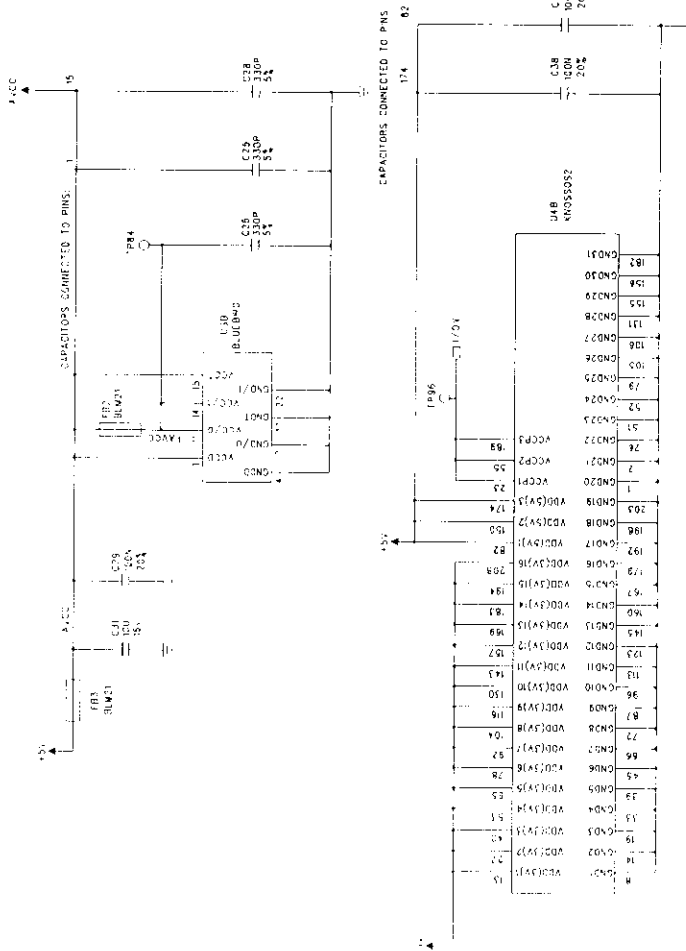
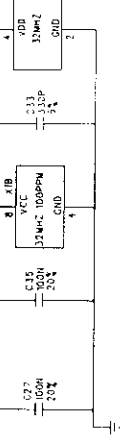
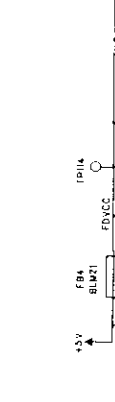
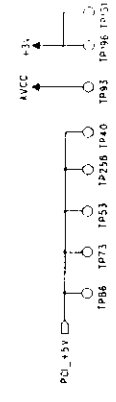
MADE METROPCS LTD. 57/60M PARK, SLOUGH, SL2 4AS ENGLAND, UK. 	
PROJECT: KINGSSES SHEET: 6 OF 8 DRAWING NO: 531-314	DATE: 01/09/97 DRAWING NO: 531-314
DRAWN BY: N.J. SMITH PROJECT: KINGSSES SHEET: 6 OF 8 DRAWING NO: 531-314	
DATE: 01/09/97 DRAWING NO: 531-314	
PROJECT: KINGSSES SHEET: 6 OF 8 DRAWING NO: 531-314	

PCI-3

Copyright © 1997, MADE METROPCS LTD.



POWER/GROUND TP's
(SEE ALSO P.C.B. GROUND TP ON P.C.B. PDS SHEET)



PCI-3

DATE: 26-NOV-1987
DRAWING NO: 921-314

DESIGNED BY: 1988 MADGE NETWORKS LTD.
ISSUE: 08

PROJECT: KROSSOS
SHEET: 5 OF 6

DATE: 26-NOV-1987
DRAWING NO: 921-314

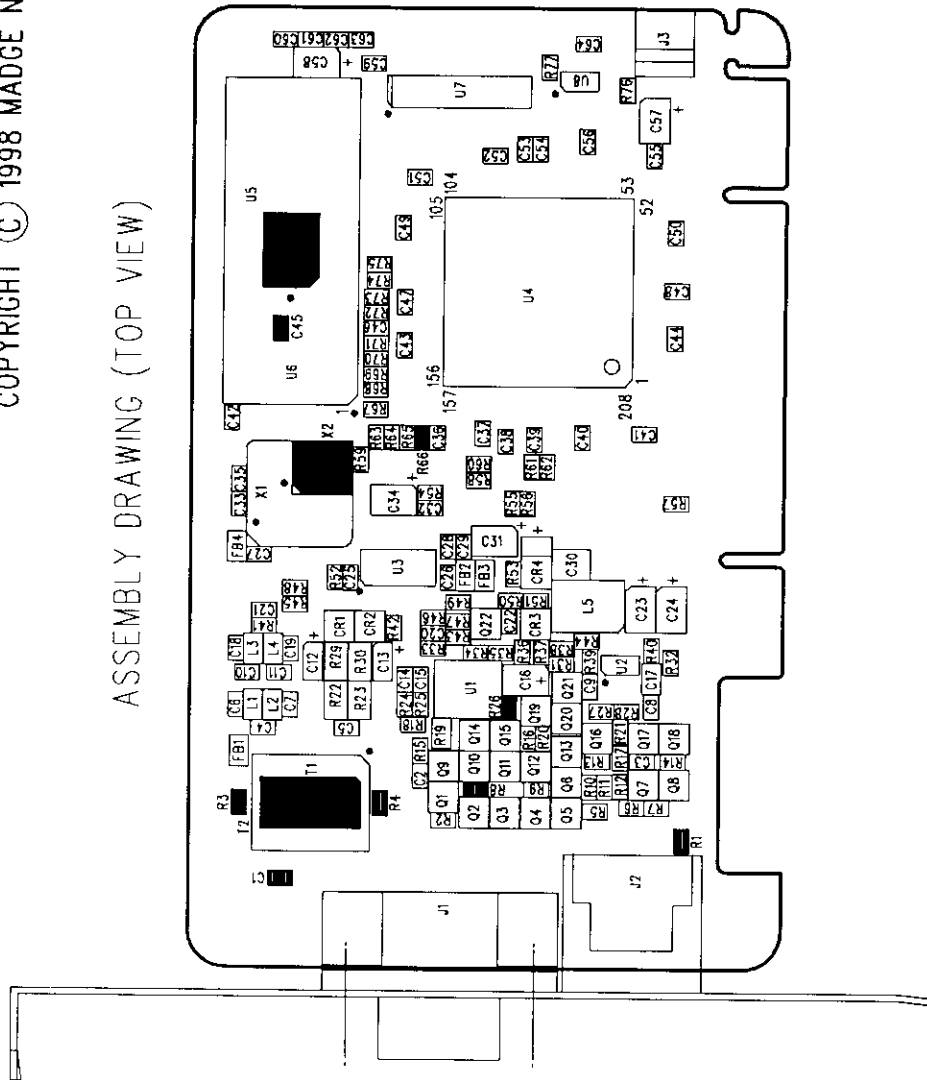
DESIGNED BY: 1988 MADGE NETWORKS LTD.

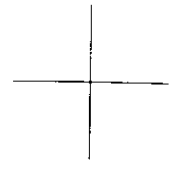


MADGE NETWORKS LTD.
SEFTON PARK
STONELINE ROAD
SLOUGH SL2 4LS
ENGLAND, UK
TEL: 0753 640000
FAX: 0753 680001

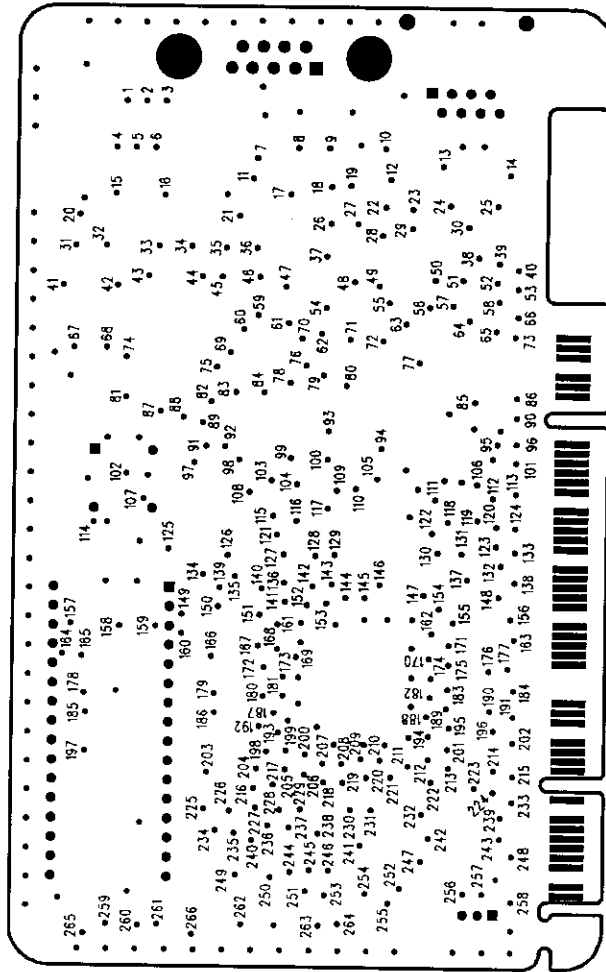
ARTWORK NO. 952-345-03
MADGE PCI-3
COPYRIGHT © 1998 MADGE NETWORKS LTD

ASSEMBLY DRAWING (TOP VIEW)

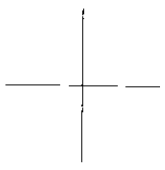


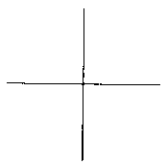


TEST POINTS (BOTTOM VIEW)



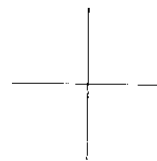
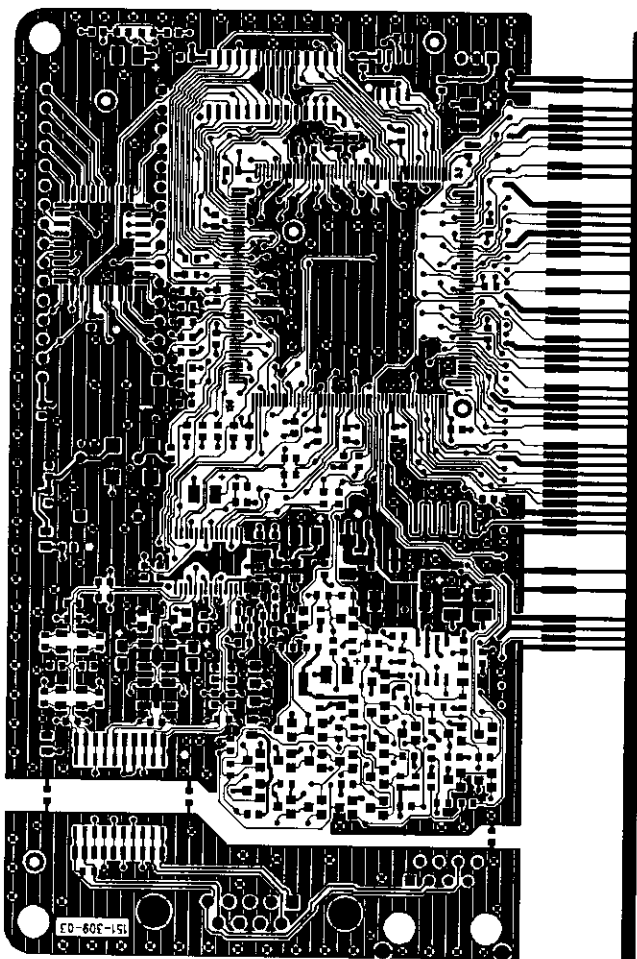
COPYRIGHT © 1988 WADGE NETWORKS LTD
 WADGE PCI-3
 PARTWORK NO. 825-342-03

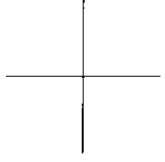




ARTWORK NO. 952-345-03
MADGE PCI-3
COPYRIGHT © 1998 MADGE NETWORKS LTD

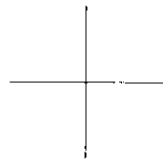
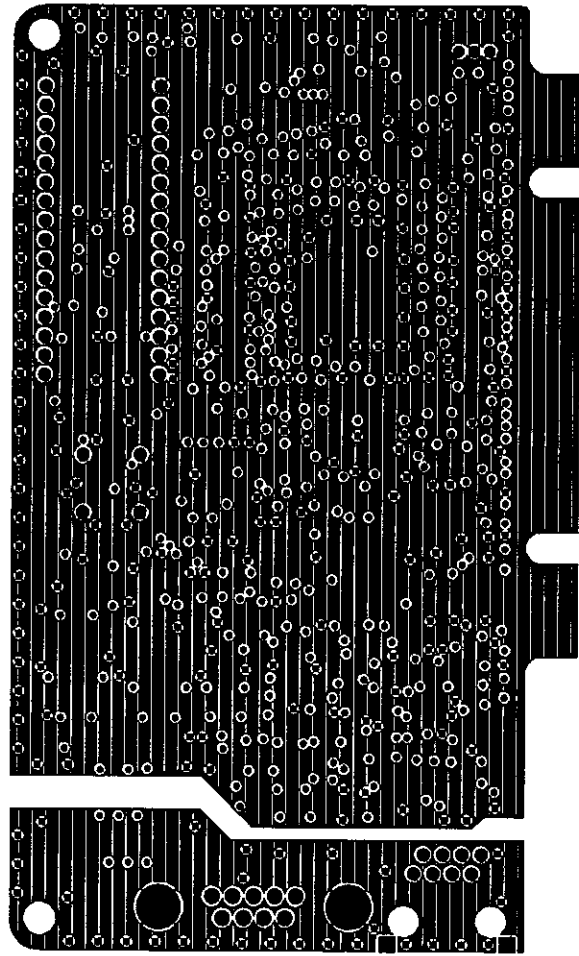
LAYER 1 - COMPONENT SIDE

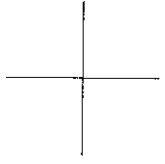




ARTWORK NO. 952-345-03
MADGE PCI-3
COPYRIGHT © 1998 MADGE NETWORKS LTD

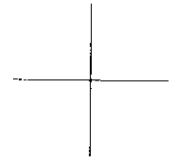
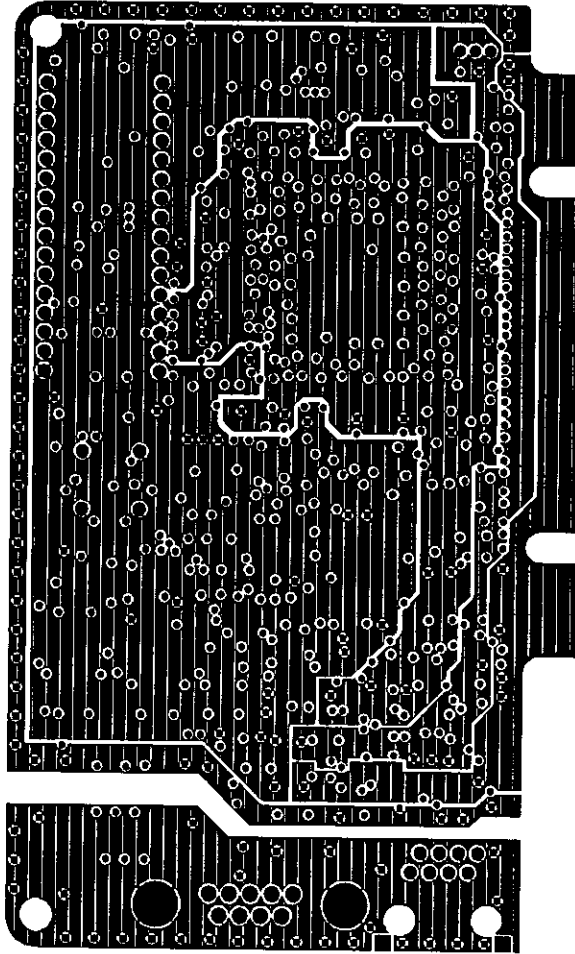
LAYER 2 - GND PLANE

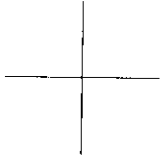




ARTWORK NO. 952-345-03
MADGE PCI-3
COPYRIGHT © 1998 MADGE NETWORKS LTD

LAYER 3 - VCC PLANE





ARTWORK NO. 952-345-03
MADGE PCI-3
COPYRIGHT © 1998 MADGE NETWORKS LTD

LAYER 4 - SOLDER SIDE

