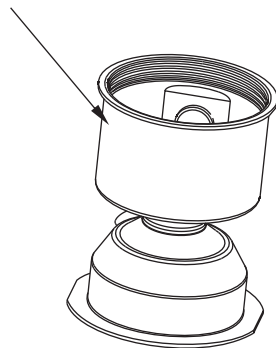


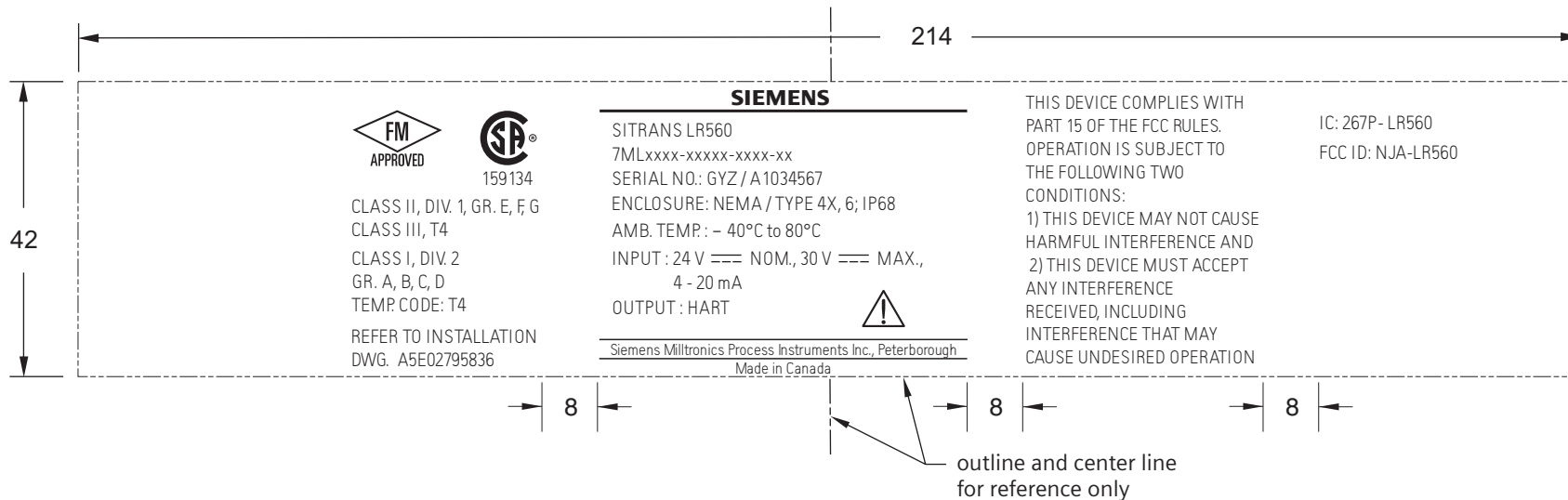
NOTES:

- 1) NAMEPLATE INFORMATION TO APPEAR CENTERED ON METAL HOUSING OPPOSITE CONDUIT ENTRY
- 2) COLOUR: ALL TEXT & ARTWORK TO BE BLACK ON SILVER
- 3) ENGRAVING PROCESS IS Nd:YAG LASER MARKING.
- 4) IN THE PRODUCT CONFIGURATION NUMBER EXAMPLE, x's ARE PLACE HOLDERS FOR ALPHANUMERIC CHARACTERS.
- 5) SERIAL NUMBER SHOWN IS FOR EXAMPLE ONLY. CHARACTER 5 ENCODES YEAR OF MANUFACTURE. REFER TO EN 60062 - TWENTY YEAR CYCLE (IE: V = 2007, W = 2008, X = 2009, A = 2010, B = 2011, C = 2012)

NAMEPLATE TO BE CENTERED ON THIS PART OF THE HOUSING 8 mm DOWN FROM UPPER EDGE



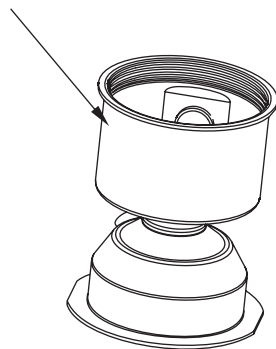
	2	CHANGES PER ECO 79C64568	MLB	SN	OCT 25 2010	
	1	FOR RELEASE PER ECO 79B57508	RPC	SN	FEB 03/2010	
USE DIMENSIONS ONLY - DO NOT SCALE	Rev.	Revision / ECN Description	Drawn	Appr.	Date	
DIMENSIONS ARE IN MILLIMETERS						
Third Angle Projection 	Product Group	RADAR	Tolerance Unless Otherwise Noted: UOS 0 PLC DECIMAL ± 0.8 1 PLC DECIMAL ± 0.3 2 PLC DECIMAL ± 0.10	Angles: ± 0.5°	Scale: 1:1	Size: A
FOR INTERNAL USE ONLY	Date:	03 / FEBRUARY / 2010	TITLE: LR560, FF CSA / FM Class II Div 1, Class I Div 2 NAMEPLATE DRAWING			
	Drawn:	R. CLYSDALE				
	Checked:	T. COUPLAND				
	Approved:	S. NGUYEN				
	Location:	PETERBOROUGH	DRAWING No: A5E01382954		Rev. 2	
	File No.	A5E01382954A02	Plot at: 1:1	Sheet 1	Of 1	



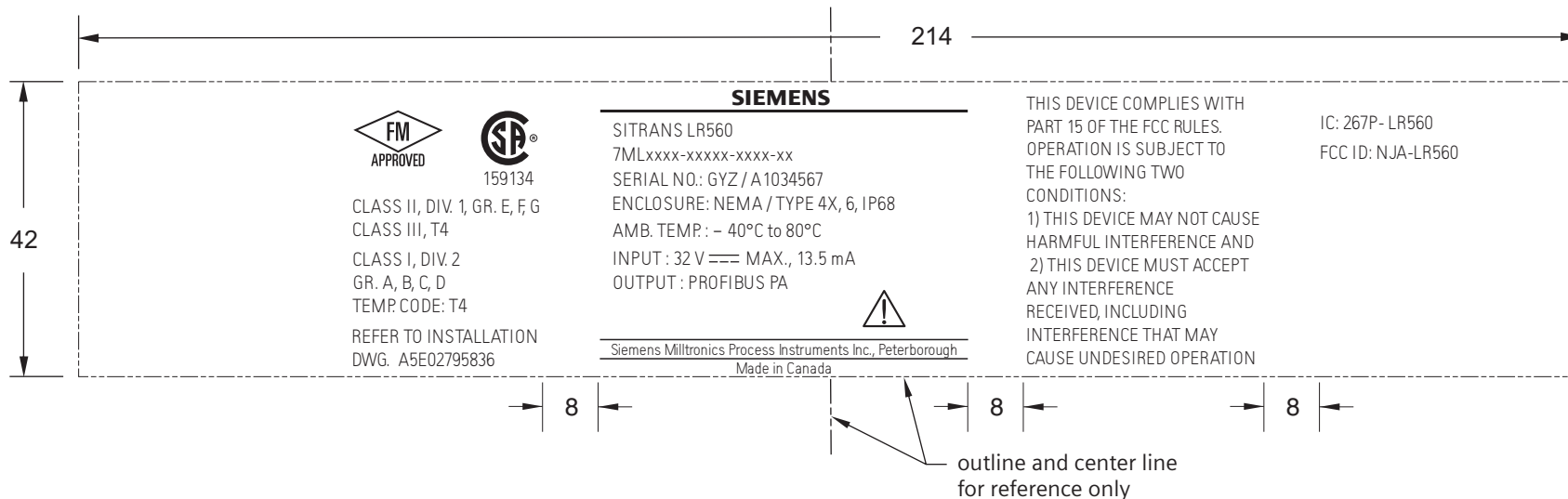
NOTES:

- 1) NAMEPLATE INFORMATION TO APPEAR CENTERED ON METAL HOUSING OPPOSITE CONDUIT ENTRY
- 2) COLOUR: ALL TEXT & ARTWORK TO BE BLACK ON SILVER
- 3) ENGRAVING PROCESS IS Nd:YAG LASER MARKING.
- 4) IN THE PRODUCT CONFIGURATION NUMBER EXAMPLE, x's ARE PLACE HOLDERS FOR ALPHANUMERIC CHARACTERS.
- 5) SERIAL NUMBER SHOWN IS FOR EXAMPLE ONLY. CHARACTER 5 ENCODES YEAR OF MANUFACTURE. REFER TO EN 60062 - TWENTY YEAR CYCLE (IE: V = 2007, W = 2008, X = 2009, A = 2010, B = 2011, C = 2012)

NAMEPLATE TO BE CENTERED ON THIS PART OF THE HOUSING 8 mm DOWN FROM UPPER EDGE



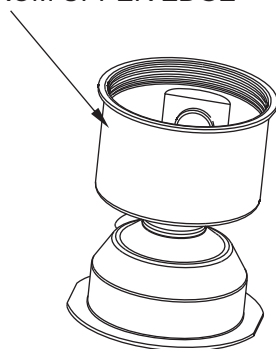
	2	CHANGES PER ECO 79C64568	MLB	SN	OCT 25 2010
	1	FOR RELEASE PER ECO 79B57508	RPC	SN	FEB 03 / 2010
USE DIMENSIONS ONLY - DO NOT SCALE	Rev.	Revision / ECN Description	Drawn	Appr.	Date
DIMENSIONS ARE IN MILLIMETERS					
Third Angle Projection 	Product Group RADAR	Tolerance Unless Otherwise Noted: UOS 0 PLC DECIMAL \pm 0.8 1 PLC DECIMAL \pm 0.3 2 PLC DECIMAL \pm 0.10	Angles: \pm 0.5°	Scale: 1:1	Size: A
FOR INTERNAL USE ONLY	Date: 03 / FEBRUARY / 2010	TITLE: LR560, HART CSA / FM Class II Div 1, Class I Div 2 NAMEPLATE DRAWING			
	Drawn: R. CLYSDALE				
	Checked: T. COUPLAND				
	Approved: S. NGUYEN	DRAWING No: A5E01383048			
Location: PETERBOROUGH	Rev. 2				
SIEMENS MILLTRONICS PROCESS INSTRUMENTS INC. Peterborough, Ontario, Canada	File No. A5E01383048A02	Plot at: 1:1	Sheet 1	Of 1	

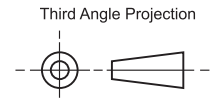


NOTES:

- 1) NAMEPLATE INFORMATION TO APPEAR CENTERED ON METAL HOUSING OPPOSITE CONDUIT ENTRY
- 2) COLOUR: ALL TEXT & ARTWORK TO BE BLACK ON SILVER
- 3) ENGRAVING PROCESS IS Nd:YAG LASER MARKING.
- 4) IN THE PRODUCT CONFIGURATION NUMBER EXAMPLE, x's ARE PLACE HOLDERS FOR ALPHANUMERIC CHARACTERS.
- 5) SERIAL NUMBER SHOWN IS FOR EXAMPLE ONLY. CHARACTER 5 ENCODES YEAR OF MANUFACTURE. REFER TO EN 60062 - TWENTY YEAR CYCLE (IE: V = 2007, W = 2008, X = 2009, A = 2010, B = 2011, C = 2012)

NAMEPLATE TO BE CENTERED ON THIS PART OF THE HOUSING 8 mm DOWN FROM UPPER EDGE



	2	CHANGES PER ECO 79C64568	MLB	SN	OCT 25 20100	
USE DIMENSIONS ONLY - DO NOT SCALE	1	FOR RELEASE PER ECO 79B57508	RPC	SN	FEB 03 / 2010	
DIMENSIONS ARE IN MILLIMETERS	Rev.	Revision / ECN Description	Drawn	Appr.	Date	
Third Angle Projection 	Product Group RADAR		Tolerance Unless Otherwise Noted: UOS 0 PLC DECIMAL ± 0.8 Angles: ± 0.5° 1 PLC DECIMAL ± 0.3 2 PLC DECIMAL ± 0.10		Scale: 1:1	Size: A
FOR INTERNAL USE ONLY	Date:	03 / FEBRUARY / 2010	TITLE: LR560, PROFIBUS PA CSA / FM Class II Div 1, Class I Div 2 NAMEPLATE DRAWING			
	Drawn:	R. CLYSDALE				
	Checked:	T. COUPLAND				
	Approved:	S. NGUYEN				
	Location:	PETERBOROUGH	DRAWING No: A5E01382997		Rev. 2	
	File No.	A5E01382997A02	Plot at:	1 : 1	Sheet 1 Of 1	