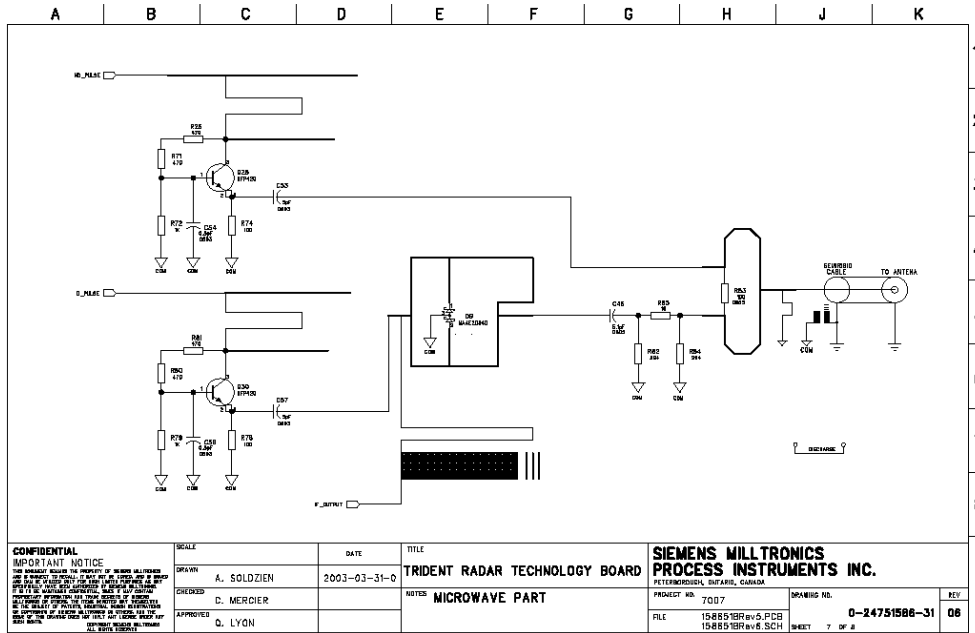
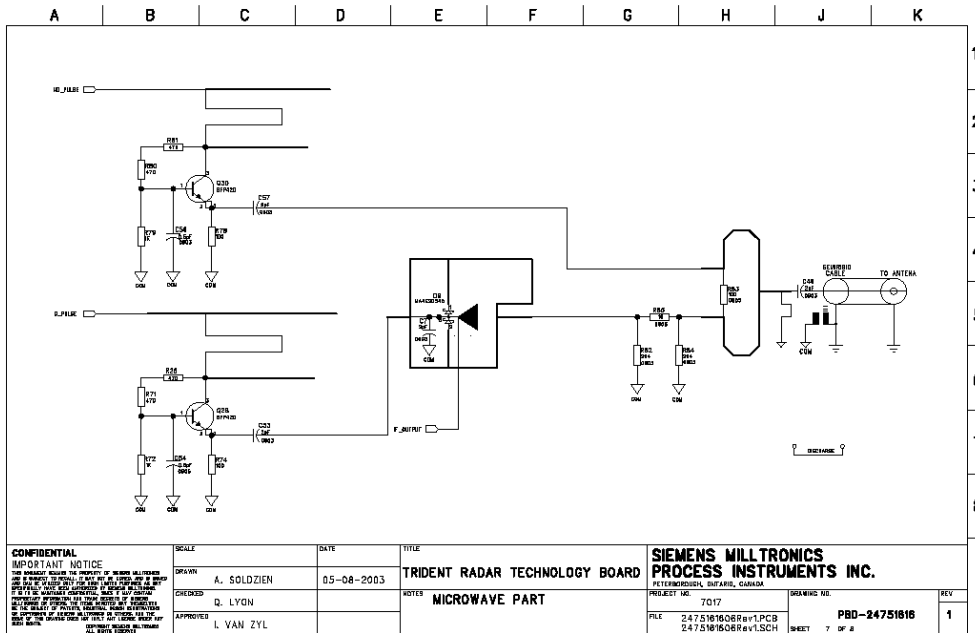


Differences between Microwave module in LR200 metal enclosure and LR200 plastic enclosure.



LR200 Microwave module for metal enclosure



LR200 Microwave part for plastic enclosure (new design)

Differences Plastic enclosure vs. Metal enclosure

- The PCB layout of the RTM has been changed.
- C46 placed initially after the 3dB pi attenuator (R82, R84, R85) moved in series with the input/output port and value changed from 5.1pF to 2.0pF
- The IF output is collected now from the common terminal of the mixing diode pair. The HF stub moved close to the common terminal. A decoupling capacitor (C7 – 2pF) has been placed at that point.
- Grounding stubs placed at different points.