

Rechargeable Wireless Optical Mouse

MWP33-LW USER'S MANUAL

Important Ergonomic Information

Some experts believe that using any mouse or trackball may cause serious injury to hands, wrists, arms, neck, or back. If you feel pain, numbness, or weakness in these areas, see a qualified health professional.

TO REDUCE THE RISK OF INJURY, FOLLOW THESE PRECAUTIONS:

- ☞ Take frequent breaks, get up and walk around several times every hour.
- ☞ Vary your tasks throughout the day.
- ☞ Keep your shoulders relaxed with your elbows at your side. Position your keyboard and mouse so you do not have to reach.
- ☞ Adjust your chair and keyboard so your upper arms and wrists are straight.
- ☞ Avoid resting your wrists on sharp edges.

System Requirement

- ☞ Mouse compatible with standard Microsoft OS
- ☞ 3rd button and wheel function require Win98/ ME/ 2000/ XP
- ☞ 4th & 5th button require Win2000/XP, or required to install additional driver
- ☞ If your computer's operating system is Windows 98/ 98SE, please prepare the Windows98 or 98SE compact disk for system's request during the installation of mouse.

Getting Started

Congratulations on your purchase of an 800dpi Rechargeable Wireless Optical Presenter Mouse. By using the advanced RF technology a 360° operation is possible and no line-of-sight is required between the receiver and the mouse. The 800dpi high resolution will bring users the best operation accuracy and efficiency, especially when the pixel of display over 1024*768 pixel. It operates at twice the speed and only requires 1/4 of the space in comparison to a 400 dpi mouse. Battery and power consumer is always the key issue for a wireless product. By the way, the MWP33-LW is designed as a rechargeable product.

Package Contains

Your MWP33-LW Wireless Mouse package includes the following:

1. The wireless mouse
2. USB plate charger with building receiver
3. User's manual
4. 2 AAA rechargeable batteries

Note : If any part is missing, please contact your dealer for a replacement immediately.

Precaution

The optical mouse **can not** work on a glass or mirror surface. Avoid operating this mouse on a glossy surface; otherwise, this mouse may not operate normally.

For consideration of saving battery power, it is strongly recommended to operate an optical mouse on a bright surface with fine texture to obtain lower power consumption of the high illumination LED. A very dark surface will cause higher power consumption.

For optimal performance, place the receiver at least 8 inches or 20 centimeters away from other electrical devices, such as the computer, the computer monitor, speakers or other external storage drives.

For a better transmission distance, avoid using this device on a metal plate or

desktop because a large surface of iron, aluminum, copper and other metal will act as a shield or ground to the RF antenna of the mouse and receiver. Operating on a metal surface may shorten the transmission distance.

If your notebook computer has a metal (contains Al or Mg) case, the metal housing of the LCD panel will isolate partial radiation of the RF signal from the mouse. This could possibly result in reducing the distance of transmission when you operate the mouse right in front of the notebook and when the receiver is connected on the back of the notebook. However, the RF mouse should work properly while you are operating the mouse just beside your desktop computer.

Hardware Installation Guide (Mouse)

Insert the battery



1. Open the battery cover
2. Insert 2 AAA rechargeable batteries in correct direction
3. Close the battery cover.

Note. It's a rechargeable product. Please **using rechargeable battery only**, or will damage this product, even your computer.

Connect the receiver with computer.

1. Turn off your computer
2. Disconnect the current mouse
3. Plug the adapter into the receiver
4. Plug the USB connector (receiver) into USB port (computer).
5. Turn the computer on

- a. USB is a PnP device; you can plug the device no matter the computer is on or off. Of course, you can remove USB device in the same way.
- b. If the device is HD or pen drive or any device which can store files, stop the device than remove is the best way to protect.

Synchronize the RF Mouse (Pairing)

If the mouse is in sleep mode click the mouse button once to wake it up.

1. Bring the mouse within 1 ft range from the receiver.
2. Switch on the mouse.
3. Hold the mouse upside-down and use a pointed object, such as a pen tip, to click the "CONNECT" button (ID button) once.

Note. *Poke the Mouse Connect button first, and then click the receiver's button.



4. Click the receiver's connect button once (located on the back of the receiver) within 5 seconds after clicking the connect button on the mouse. The LED will start blinking, when the connection is established.
5. Move the mouse around to test if it was successful.
6. If the synchronization is not successful for some reason please
 - a. Remove the batteries and unplug the receivers
 - b. Wait for 20 sec then to try the step 1 to 4 again.

Note: * During normal use, please make sure that the mouse is no more than 3 ft away from the receiver in order to have reliable connection.

** The LED on the receiver will light up while the mouse is being used.

Operation Guide

Battery low indication

When the voltage level of the battery goes down under the preset level, the scrolling wheel will flash at least three times on moving or clicking the mouse. Although the mouse can still work for a while, the user, at this time, should have a new set of batteries ready for replacement. Or, if the user has a companion charger base, and Two re-chargeable batteries are inside the mouse, charge the mouse as soon as possible.

Power off the mouse

1. Be sure the mouse is **NOT** in sleep mode. If it is, press any key to wake it up.
2. Press and hold the Connect button on the bottom of the mouse for more than 2 seconds. (The red light will go off while the Connect button is depressed.)
3. Wait until the red light flash once. Release the Connect button.
4. Now, the mouse is in power off mode. No operation can be done.

Power on the mouse

To activate the mouse again, press the Connect button on the bottom of the mouse once. (**DO NOT** depress the Connect button for more than 1.5 seconds when resuming the mouse from power off mode.) The red light will turn on, and the mouse is ready for normal operation.

Note: Be sure to press the connect button firmly in procedure, if the connect button is not depressed steadily the red light will be on before 2 seconds expire. This will result in a change of channel and ID. Don't panic, just re-connect the mouse to the receiver, and follow step 4 again.

Operations on power saving mode

In order to conserve battery power, the mouse is designed to reduce power consumption gradually from standby mode to sleep mode, if it is not being used.

Standby mode – Around 2 seconds after the mouse stops moving, it enter into standby mode.

Sleep mode – If the mouse is left intact for around 8 minutes, it goes to sleep mode

and shuts down the optical sensor to maintain minimum power consumption. No moving operation is possible in this mode.

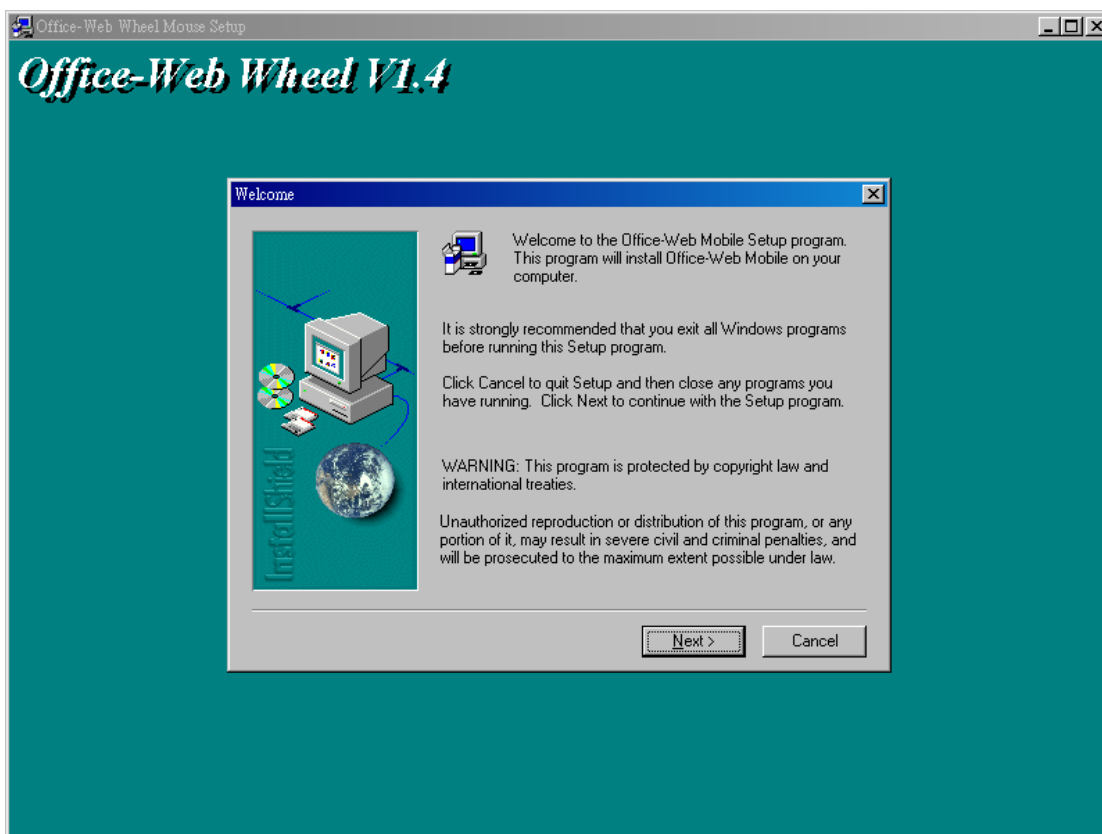
Wake up the mouse

This mouse can work promptly under Standby mode so users might not be able to tell the existence of this mode. But, in sleep mode, users have to press any button to wake up the mouse for normal operation.

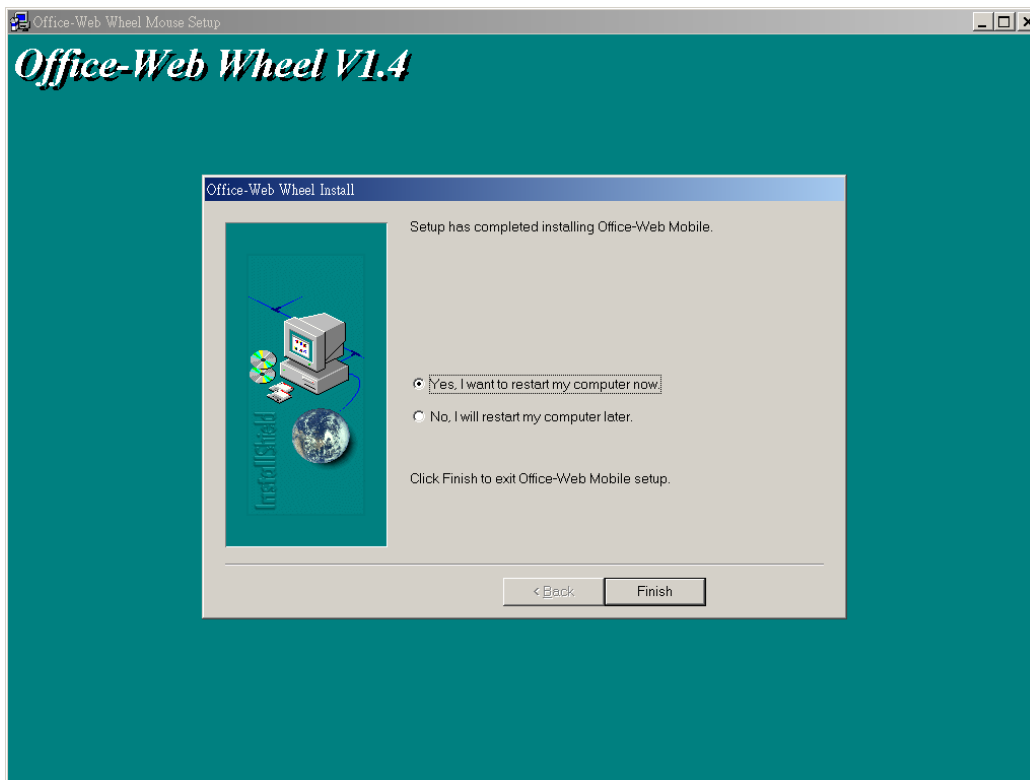
Installing the Software

To install the software, please follow the steps below to finish:

1. Insert the Auto-Run CD-ROM onto CD-ROM driver, the installation menu will be executed automatically. (If the auto-run does not function itself, double-click the “**setup**” icon in the CD files.)
2. The setup program will guide you to finish the installation step by step



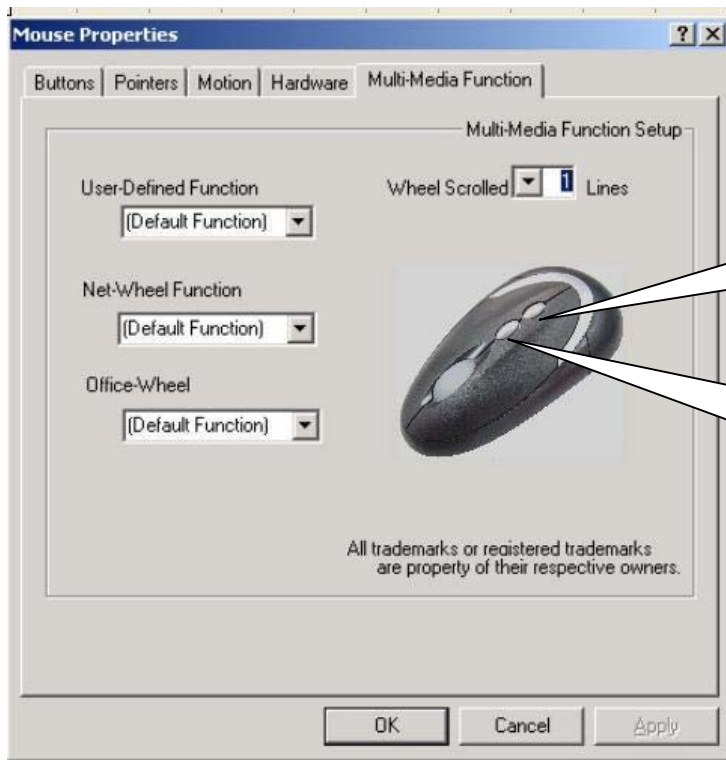
- After you finish the installation, select "Restart" to reboot your system and activate multimedia hot keys and wheel scrolling functions.



Programmable Office-Web Hot Keys

When you install the included software driver the mouse hot keys will be enable with driver default. Default setting for these hot keys is programmable as shown on the application by running the “Office-Web Wheel Center” as following:

- The Office-Web Function is attached on the mouse software as following. Users can change the default function of wheel and extra hot-keys.
- The wheel can be set as a standard scrolling up-down function or others, such as Office or Web short cut as following graphs. When you scroll the wheel, there is a yellow icon rotated to choose function.
- To get rid of the wheel on the screen, click on the right button of the mouse.



Press 5th key to activate

Press 4th key to activate Net-Wheel



Office-Wheel
(Scroll to choose and press to function)



Net-Wheel

GENERAL SPECIFICATIONS

- 5 Buttons Wireless optical mouse.
- 800dpi hardware resolution.
- Low power indicator.
- Rechargeable.
- Charger with build-in receiver.
- 27.045MHz Digital Radio Frequency.
- 2 AAA batteries to operate the mouse.

Troubleshooting

1. Mouse does not function

- If mouse is not functional, please turn off the computer first.
- Check the receiver and make sure it is firmly attached to the USB port of the computer.
- Check the placement of batteries and see if they are properly connecting.
- The "+" and "-" on the batteries must match the "+" and "-" on the slots. If the batteries aren't inserted correctly, the device won't work.
- Restart the computer again. If the LED inside the receiver does not light up when moving the mouse, please re-connect the mouse to the receiver.
- **Q:** The mouse cursor can only move left & right during operation (it could be caused by low battery or the optical sensor's data error).
A: Please take out one of batteries and put it back for a power reset and then redo the connect procedure.
- **Q:** The mouse does not work after waking up from power off mode by pressing the connect button once.
A: This might be caused by imprecisely depressing the connect button to wake up the mouse. Users can gain back normal operation by pressing connect button on the mouse first, and then pressing the one on the receiver. As soon as the LED inside the receiver starts flashing, the mouse is ready to operate.

Optical Sensor Mouse functions best on surfaces with details for tracking. It may not function on reflective, reflective pattern or non-visible detail surfaces!

2. Reducing Interference with Other Wireless Devices

■ Reducing Interference with Other Wireless Devices:

All 27MHz radio-based devices are subject to interference from other 27MHz radio-based devices, such as wireless telephones, wireless baby monitors, and wireless toys. It may help to move the receiver unit and the base unit of other wireless devices (such as wireless telephone cradle) as far apart as possible. You may need to try several times for a location that is best in your operating environment.

- Move the receiver and the mouse closer to each other so that the receiver is relatively shorter in distance to the mouse than to other 27MHz transmitters. You may need to re-establish the “connection”.

Note: Avoid using this device on a metal surface because a large surface of iron, aluminum, copper, or other metal may act like a shielding to the RF antenna of the mouse and the receiver.

3. Interference with other RF wireless mouse

If the interference comes from other same model of RF wireless mice, please “Setting up connection between mouse and receiver” of the installation guide to switch to a new RF channel. A new identification code is also generated upon the completion of channel switching.

Normally, the effective transmission distance is about 3 feet, depending on the environment. If the effective distance between the mouse and the receiver is bad, try to change the location of the receiver.

4. If you have difficulty connecting the wireless mouse:

- Increase the distance between the set of wireless mouse and other radio device units.
- Turn off the other wireless devices, or their base units that are in close proximity to the receiver of this wireless mouse.
- Try connecting the wireless mouse and its receiver again.
- To verify that your device is connected and working properly, open a document and try the device.



**Tested to comply with FCC standards
For home or office use**

This device complies with Part 15 of the FCC Rules. Operation is subject to the following two conditions: (1) This device may not cause harmful interference, and (2) this device must accept any interference received, including interference that may cause undesired operation.

CE - Type acceptance: EN300 220 Short Range Device

Federal Communication Commission Interference Statement

This equipment has been tested and found to comply with the limits for a Class B digital device, pursuant to Part 15 of the FCC Rules. These limits are designed to provide reasonable protection against harmful interference in a residential installation. This equipment generates, uses and can radiate radio frequency energy and, if not installed and used in accordance with the instructions, may cause harmful interference to radio communications. However, there is no guarantee that interference will not occur in a particular installation. If this equipment does cause harmful interference to radio or television reception, which can be determined by turning the equipment off and on, the user is encouraged to try to correct the interference by one of the following measures:

- Reorient or relocate the receiving antenna.
- Increase the separation between the equipment and receiver.
- Connect the equipment into an outlet on a circuit different from that to which the receiver is connected.
- Consult the dealer or an experienced radio/TV technician for help.

FCC Caution: Any changes or modifications not expressly approved by the party responsible for compliance could void the user's authority to operate this equipment.

This device complies with Part 15 of the FCC Rules. Operation is subject to the following two conditions: (1) This device may not cause harmful interference, and (2) this device must accept any interference received, including interference that may cause undesired operation.

IMPORTANT NOTE:

FCC Radiation Exposure Statement:

This equipment complies with FCC RF radiation exposure limits set forth for an

uncontrolled environment. To maintain compliance with FCC RF exposure compliance requirements, please avoid direct contact to the transmitting antenna during transmitting.

This transmitter must not be co-located or operating in conjunction with any other antenna or transmitter.