

WIRELESS OFFICE-WEB OPTICAL MOUSE

USER'S MANUAL (Model #: DC-2090)

Important Ergonomic Information

Some experts believe that using any mouse or trackball may cause serious injury to hands, wrists, arms, neck, or back. If you feel pain, numbness, or weakness in these areas, see a qualified health professional.

TO REDUCE THE RISK OF INJURY, FOLLOW THESE PRECAUTIONS:

- Take frequent breaks, get up and walk around several times every hour.
- Vary your tasks throughout the day.
- Keep your shoulders relaxed with your elbows at your side. Position your keyboard and mouse so you do not have to reach.
- Adjust your chair and keyboard so your upper arms and wrists are straight.
- Avoid resting your wrists on sharp edges.

System Requirement

- Mouse compatible with standard Microsoft mode
- 3rd button and wheel function require Win98/2000/ME/NT/XP
- 4th & 5th button require Win2000/XP to function, or will require to install additional driver as attached with this product.
- 6th & 7th button require installing additional driver as attached with this product.
- If your computer's operating system uses Windows98/98SE, please prepare the Windows98 or 98SE compact disk for system's request during the installation of mouse.

Before you begin

- Keep this installation guide for future reference! It contains Important Troubleshooting Information.
- Keep your old PS/2 mouse as a back-up device.

Getting Started

Congratulations on your purchase of an **800dpi** Office-Web mouse. The 800dpi high resolution will bring users the best operation accuracy and efficiency, especially for a display at 1024*768 or higher. It has a double operation speed and only requires 1/4 space by comparing with a 400dpi mouse. With the ergonomic design in extra buttons,

the short-cut functions about MS-Office and Internet provide you an efficient operation to access defaulted path or hot-functions chosen by yourself.

Package Contains

Your DC-2090 Mouse package includes the following:

1. Optical Mouse
2. Mini Receiver
3. User's manual
4. CD-ROM Driver for Windows 98SE/2000/ME/NT/XP
5. 2 AA size alkaline batteries

Note : If any part is missing, please contact your dealer for a replacement immediately.

Precaution

! The optical mouse *cannot* work on a glass or mirror surface. Avoid operating this mouse on a glossy surface. Otherwise, this mouse may not operate normally.

! For consideration of saving battery power and have a good performance, it is strongly recommended to operate an optical mouse on a bright surface with fine texture.

Battery Warning!

When replace the batteries, use alkaline. You may use rechargeable NiMH or other type of batteries, but do not mix then with alkaline. Do not mix used and new batteries together!

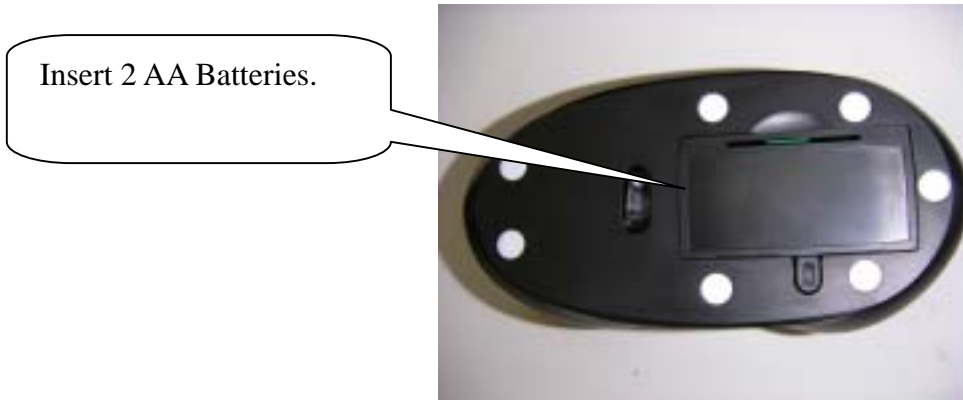
Installation Guide (Mouse Connection)

! If your computer's operating system uses Windows98/98SE, please prepare the Windows98 or 98SE compact disk for system's request during the installation of mouse.

Step 1. Inserting the Batteries

1. Turn the mouse to the bottom side.
2. Remove the batteries cover by moving the opening tabs and pull the battery cover out.
3. There are signs to indicate batteries' positive and negative poles. Follow the signs to place the batteries

4. Place the batteries cover back and make sure it is firmly closed

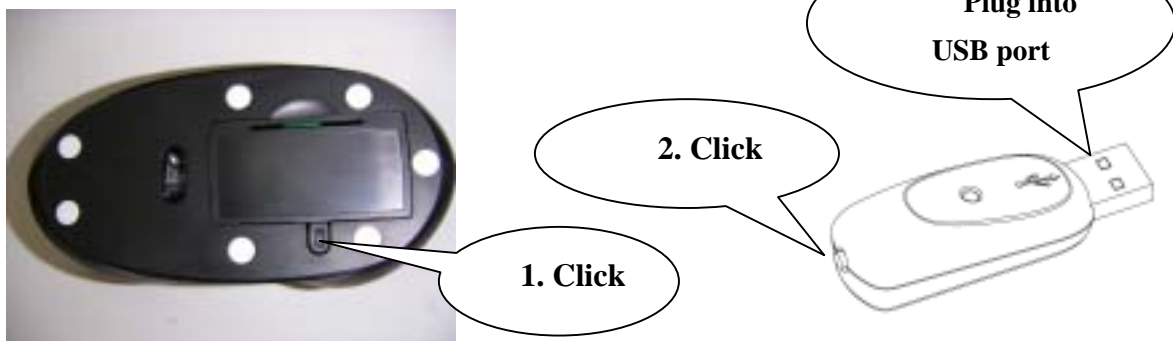


Step 2. Synchronize the RF Mouse

If the mouse is in sleep mode click the mouse button once to wake it up.

1. Plug the receiver into the notebook Computer's USB ports or into the keyboard's USB port.
2. Bring the mouse within 1 ft range from the receiver, Hold the mouse upside-down and use a pointed object, such as a pen tip, to click the "CONNECT" button once. Do Not depress the CONNECT button longer than 1.5 seconds. (The red sensor light will go off when the "CONNECT" button is pressed down.)

! Please poke the Mouse Connect button first, and then click the receiver's button!



3. Click the receiver's connect button once (located on the back of the receiver) within 5 seconds of clicking the connect button on the mouse. The LED will start blinking, when the connection is established.
4. Move the mouse around to test if it was successful.
5. If the synchronization is not successful for some reason please (1) Remove the batteries and unplug the receivers (2) Wait for 20 sec then try the steps 1 to 4

again.

Note: * During normal use, please make sure that the mouse is no more than 3 ft away from the receiver in order to have reliable connection.

** The LED on the receiver will light up or blink while the mouse is being used.

PLEASE READ THIS BEFORE YOU INSTALL ANY DRIVERS

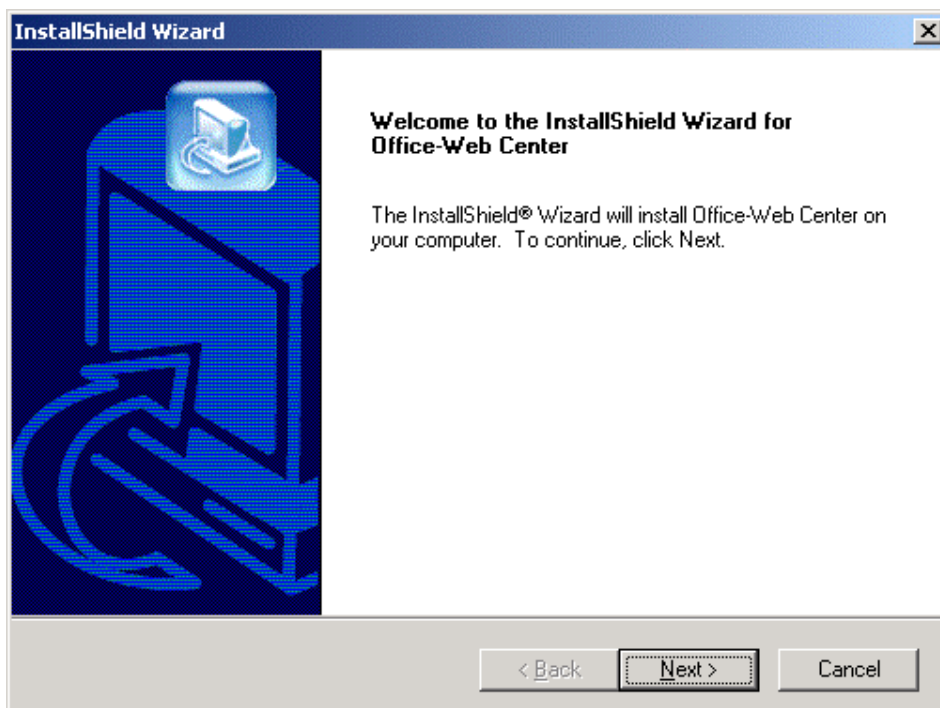
NOTE:

- After the driver installation, your mouse should automatically function in any Windows environment. If you are using Windows Version 3.1/3.11, the scroll function (and 4th~8th buttons will not operate). The wheel scroll is an enhanced feature of Windows 98, 2000, ME & XP.
- The 4th~7th buttons can be functioned only if you have installed Office-Web driver (bundled CD). If users want to assign the 4th~7th buttons as extra functions, please follow the below steps to install the Office-Web driver and to program buttons.

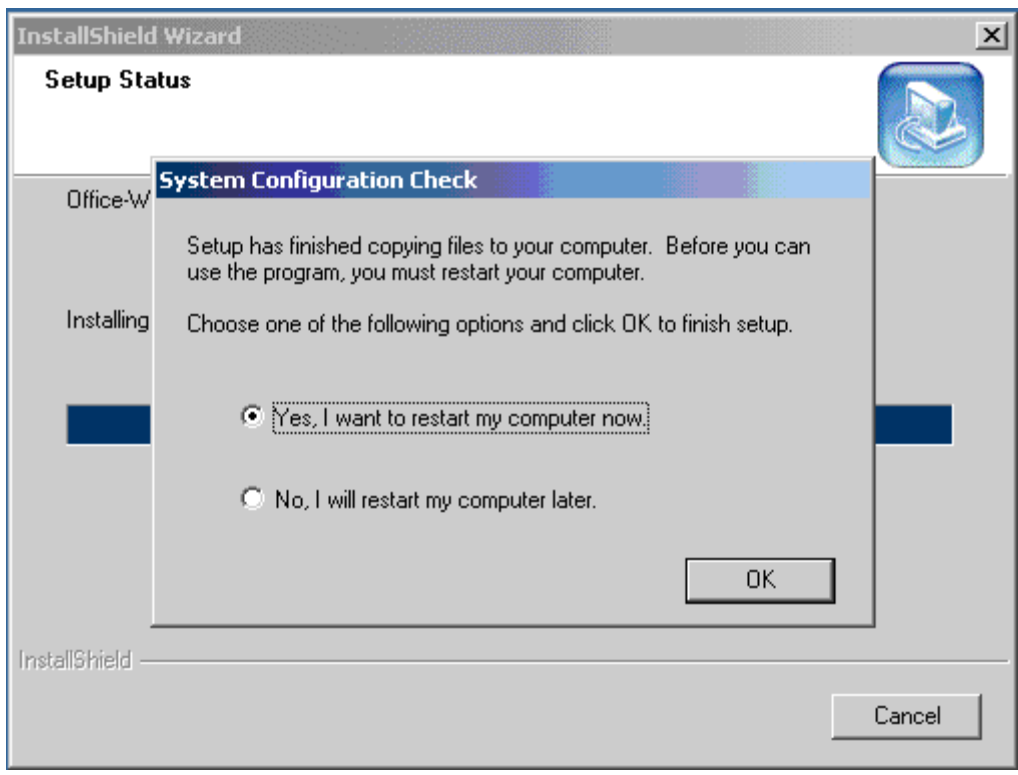
Installing the Software

To install the software, please follow the steps below to finish:

1. Insert the Auto-Run CD-ROM onto CD-ROM driver, the installation menu will be executed automatically. (If the auto-run does not function itself, double-click the “**setup**” icon in the CD files.)
2. The setup program will guide you to finish the installation step by step

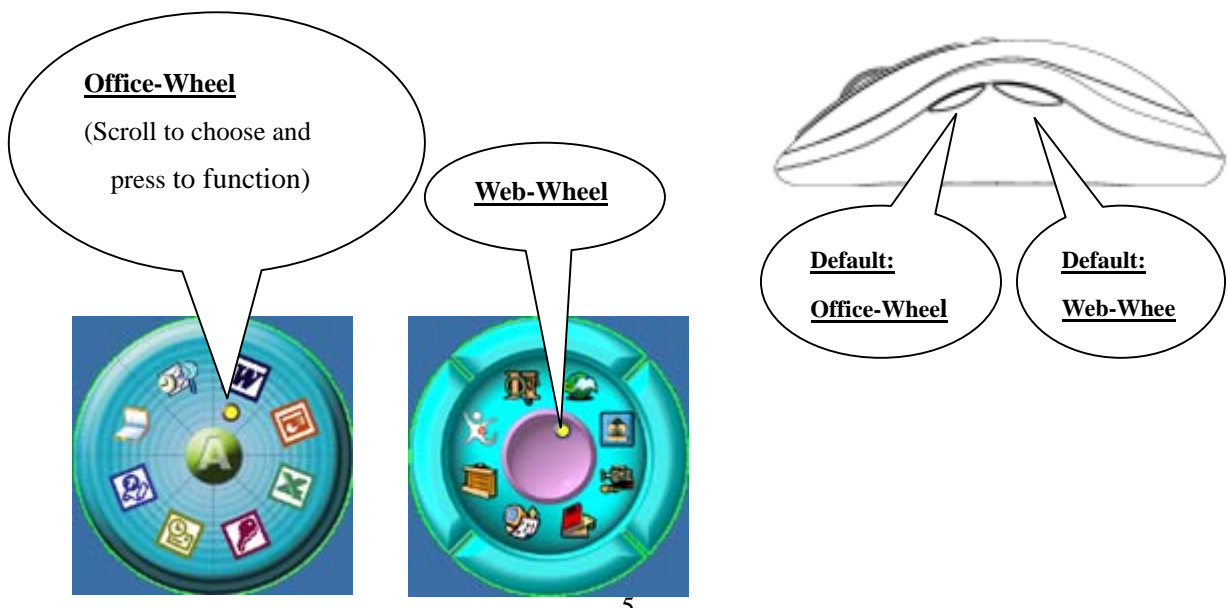


After you finish the installation, select "Restart" to reboot your system and activate multimedia hot keys and wheel scrolling functions.

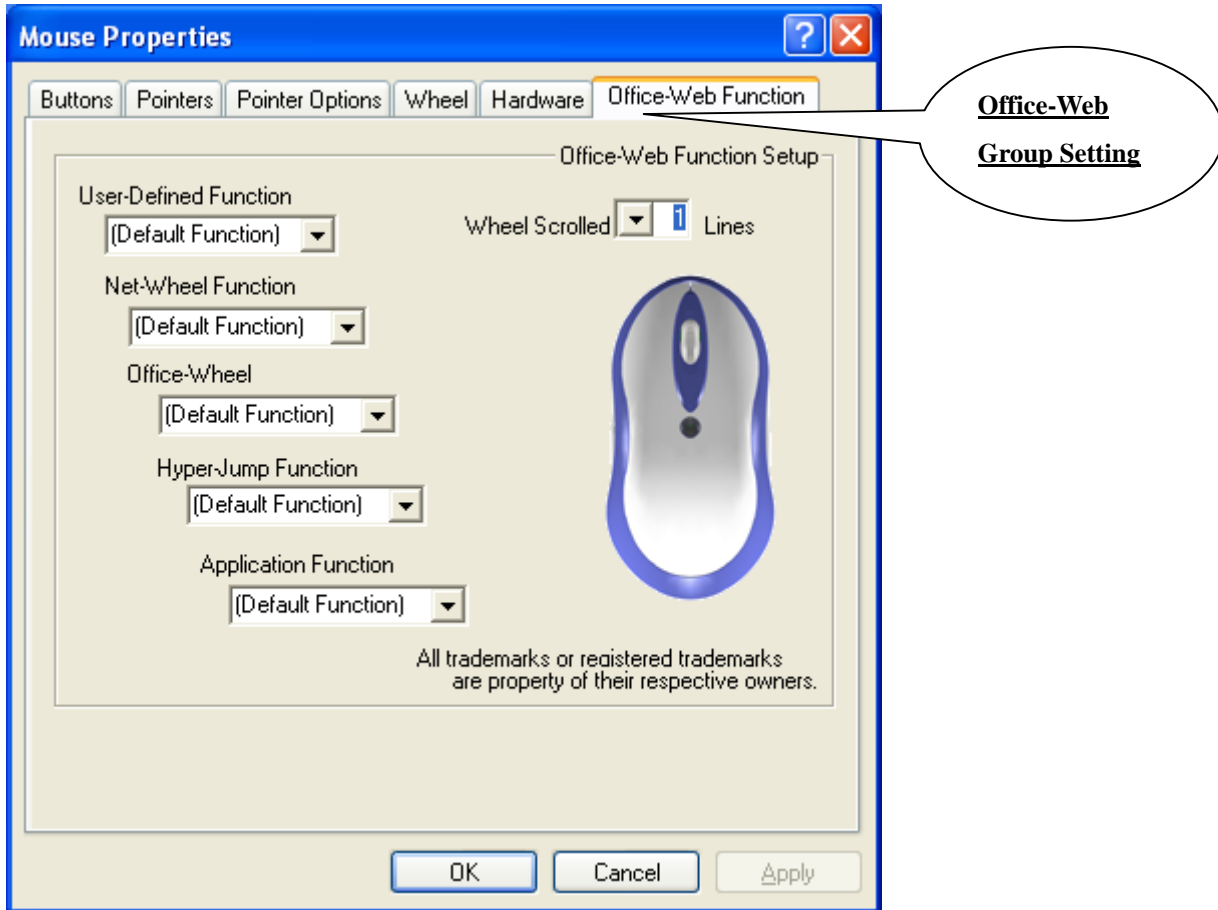


Programmable Office-Web Hot Keys

- When you install the included software driver the mouse hot keys will be enable with driver default.
- The Office-Wheel Function is attached on the mouse software as following. Users can change the default function of wheel and extra hot-keys.



- Default setting for these hot keys is programmable as following as shown on the application by running the “Office-Web Wheel Center” as following:



Electromagnetic Characteristics (EMC)

This unit complies with Part 15 of FCC Rules.

Operation is subject to following two conditions:

- (1) This device may not cause harmful interference.**
- (2) This device must accept any interference received, including interference that may cause undesired operation.**



**Tested To Comply
With FCC Standards**

Troubleshooting

! Optical sensor mouse functions best on surfaces with details for tracking. It may not function on reflective, reflective pattern or non-visible detail surfaces!

MOUSE NOT DETECTED

- Please note that USB mice are only supported under Windows 98 and Windows 2000, and Windows XP.
- Make sure the mouse cable is plugged into the correct port-USB. An USB mouse connects only to a USB port.
- Make sure your USB port has the proper configuration. Refer to your computer documentation for the correct port configuration.
- You may have other system devices (e.g. a modem card) that conflict with the mouse. Check the IRQ/address settings of these devices for conflicts, and change the setting as required. Refer to your computer documentation to make these changes.

Determine whether the problem is mouse or system related, try the mouse on a second system or a different mouse on your current system.

Federal Communication Commission Interference Statement

This equipment has been tested and found to comply with the limits for a Class B digital device, pursuant to Part 15 of the FCC Rules. These limits are designed to provide reasonable protection against harmful interference in a residential installation. This equipment generates, uses and can radiate radio frequency energy and, if not installed and used in accordance with the instructions, may cause harmful interference to radio communications. However, there is no guarantee that interference will not occur in a particular installation. If this equipment does cause harmful interference to radio or television reception, which can be determined by turning the equipment off and on, the user is encouraged to try to correct the interference by one of the following measures:

- Reorient or relocate the receiving antenna.
- Increase the separation between the equipment and receiver.
- Connect the equipment into an outlet on a circuit different from that to which the receiver is connected.
- Consult the dealer or an experienced radio/TV technician for help.

FCC Caution: Any changes or modifications not expressly approved by the party responsible for compliance could void the user's authority to operate this equipment.

This device complies with Part 15 of the FCC Rules. Operation is subject to the following two conditions: (1) This device may not cause harmful interference, and (2) this device must accept any interference received, including interference that may cause undesired operation.