

Wireless 5 buttons Rechargeable LASER Mouse

USER' S MANUAL (Model #: DL-42C/ 53C/ 54C)

Important Ergonomic Information

Some experts believe that using any mouse or trackball may cause serious injury to hands, wrists, arms, neck, or back. If you feel pain, numbness, or weakness in these areas, see a qualified health professional.

TO REDUCE THE RISK OF INJURY, FOLLOW THESE PRECAUTIONS:

- Take frequent breaks, get up and walk around several times every hour.
- Vary your tasks throughout the day.
- Keep your shoulders relaxed with your elbows at your side. Position your keyboard and mouse so you do not have to reach.
- Adjust your chair and keyboard so your upper arms and wrists are straight.
- Avoid resting your wrists on sharp edges.

SYSTEM REQUIREMENT

- Mouse is compatible with standard Microsoft mode.
- 3rd button and wheel function require Win98/2000/ME/NT/XP.
- 4th & 5th button require Win2000/XP to function, or will require to install additional driver as attached with this product.
- If your computer's operating system is Windows 95/ 98/ 98SE, please prepare the original Windows OS disk for system's request during the installation of mouse.
- 1st, 2nd and wheel are compatible with MAC

BEFORE YOU BEGIN

- ☞ Keep this installation guide for future reference. It contains Important Troubleshooting Information.
- ☞ Keep your old USB or PS/2 mouse as a back-up device.

Getting Started

The DL-42C/ 53C/ 54C the last LASER Mouse; they are high resolution, wireless and rechargeable. The multi-functional cradle is the charger and the receiver of the mouse.

The product name is defined as follow:

DL-42C: MWL42-PW+ CR42/CR42V or MWL42-PW+ RX42; DL-53C: MWL53-PW+ CR42/CR42V or MWL53-PW+ RX42; DL-54C: MWL54-PW+ CR42/CR42V or MWL54-PW+ RX42.

The using step and note are description in the manual.

Package Contains

Your LASER Mouse package includes the following:

1. Wireless Mouse
2. 2 in 1 multi-functional cradle (receiver and charger)
3. Adaptor
4. CD-ROM
5. User's manual
6. 2 AAA rechargeable batteries

Note : If any part is missing, please contact your dealer for a replacement immediately.

Precaution

For optimal performance, place the receiver at least 8 inches or 20 centimeters away from other electrical devices, such as the computer, the computer monitor, speakers or other external storage drives.

Battery Warning!

Using rechargeable batteries ONLY or will damage the product, especially during charging processor.

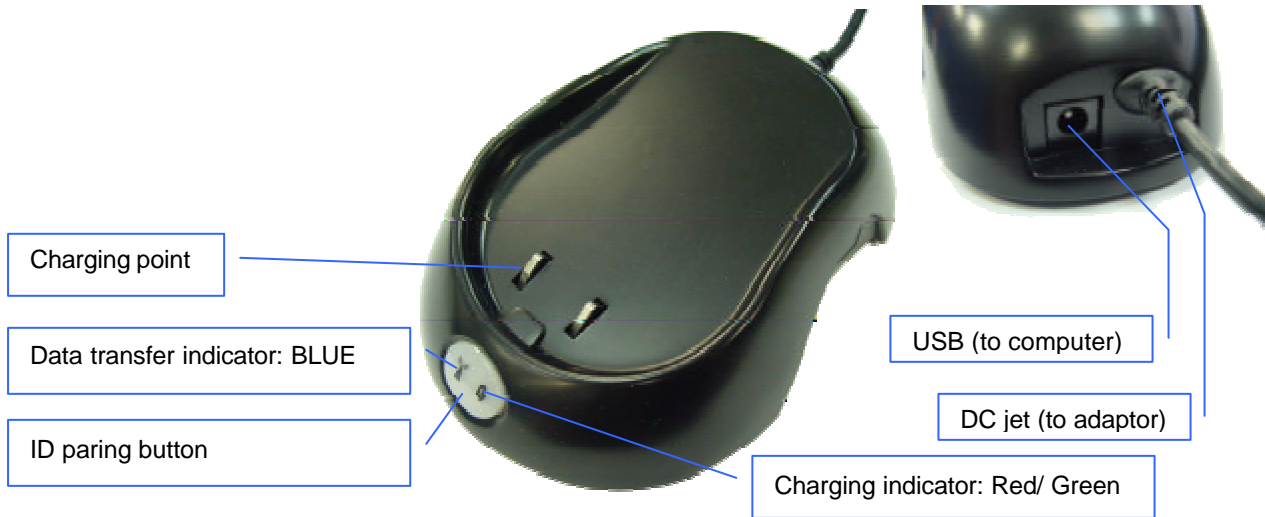
Hardware introduce



The Outlook and the buttons of the mouse



The Bottom side of the mouse



The Charging receiver cradle (CR42 / CR42V)



The whole DL-42 set



The whole DL-53 set



The whole DL-54 set

HARDWARE INSTALLATION

The processes of setup the mouse include the follow step.

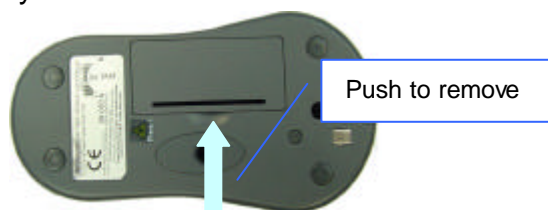
1. Set up the cradle
2. Prepare the mouse
3. Setting the channel and ID

Step 1 Set up the cradle

1. Turn off your computer
2. Disconnect the current mouse
3. Plug the adapter into the receiver (DC jet)
4. Connect the adapter to power socket
5. Plug the USB connector (receiver) into USB port (computer).

Step 2 Prepare the mouse

1. Turn the mouse up side down
2. Remove the battery room cover



3. Place 2 rechargeable AAA batteries in correct direction in the battery room.
4. Put the battery room cover back.

Note. It's a rechargeable mouse; the batteries will auto charging when the mouse is on the cradle. It's very important to **use rechargeable batteries only** for this

mouse.

Step 3 Selecting the ID Channel

The RF wireless mouse provides the possibility of 256 different ID per channel to avoid interference with other users of the same model RF wireless mice. Before using the wireless mouse, you must ensure that the same ID is set for the receiver.

Please follow the steps as below to set up:

1. Turn the mouse up side down and you will see a small button (ID paring button; refer to picture in [Hardware Introduce](#)).
2. Push and release the small ID button.
3. Push and release the small ID button on the cradle (receiver).
4. The connection will be setup with in 10 sec.
5. Please move the mouse to operate its cursor and using it as a normal wired mouse.

Note: If there is problem, please do the connecting setting procedure again or check the trouble shooting guide.

Operation Guide

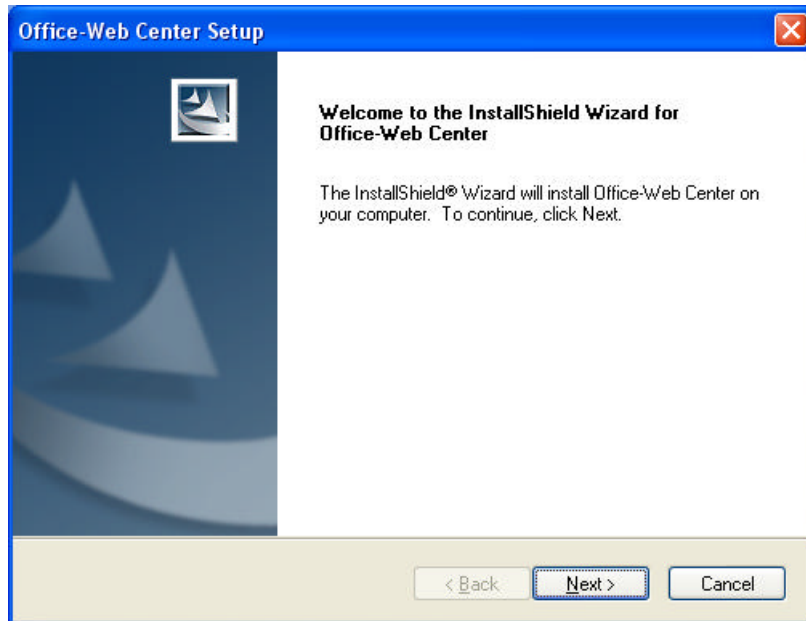
Battery Low Indication

When the voltage level of the battery goes down under the preset level, the scrolling wheel will flash at least three times on moving or clicking the mouse. Although the mouse can still work for a while, at this moment, user should have a new set of batteries ready for replacement. Or, put the mouse on the receiver (charger) to re-chargeable batteries are inside the mouse, charge the mouse as soon as possible.

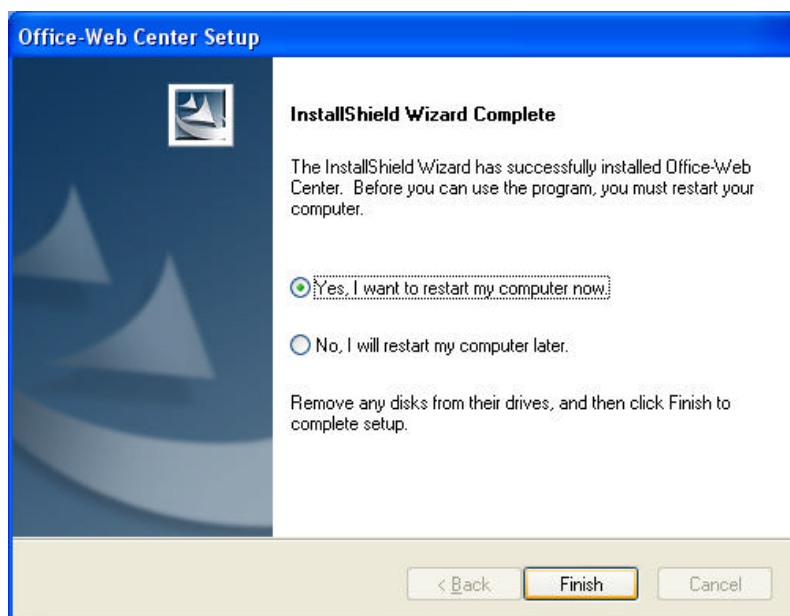
Installing the Software

To install the software, please follow the steps below to finish:

1. Insert the Auto-Run CD-ROM onto CD-ROM driver, the installation menu will be executed automatically. (If the auto-run does not function itself, double-click the “**setup**” icon in the CD files.)
2. The setup program will guide you to finish the installation step by step.



3. After finishing the process, select "Restart" to reboot your system and activate multimedia hot keys and wheel scrolling functions.



RF Office-Web Mouse

Hot-Key Functions

When you install the driver the hot keys will be enable with driver default. The Office-Wheel Function is attached on the mouse software as following. Users can change the default function of wheel and extra hot-keys. All these hot keys of the mouse is programmable as following as shown on the application by running the “ Office-Web Center” as following:

Office Wheel



Internet Wheel



MAKING THE MOUSE BUTTONS FOR OTHER ASSIGNMENTS

- Start Office-Web driver from the Control Panel or double click the mouse icon on the Windows Taskbar.
- The Mouse Properties display, go to the button assignments area and choose from the available options to set up your mouse.
- Lick the down arrow to view the list of functions. Use the scroll bar to see other functions not displayed. Choose a function by clicking it. The function you have selected is displayed and highlighted.
- The wheel functions both as a wheel and as a third button. As a wheel, simply roll the wheel. To use the wheel like a standard mouse button, click the wheel and select a function for this button.

Uninstalling the Software

How to uninstall the Mouse Driver and Application Software

The Mouse driver can be removed from Windows (except Windows 3.1x) by clicking the Add/Remove Programs icon in the Control Panel. Select "Remove" button.

GENERAL SPECIFICATIONS

- ☞ Patented Real LASER Mouse
- ☞ 1,200dpi hardware resolution?
- ☞ Multimedia/Office/Web function keys design.
- ☞ 27MHz Digital Radio Frequency wireless mouse.
- ☞ Multi-channels with 256 ID codes per channel to prevent interruption ?
- ☞ 5 buttons design with scrolling wheel
- ☞ Well power management
- ☞ Programmable buttons
- ☞ Ergonomic design for comfortable grip

Transmitter (Mouse)

- Distance: 3 feet typical
- Power: 3V DC (Two AA size of rechargeable batteries)
- Carrier Frequency: 26.995, 27.045, 27.095, 27.145, 27.195, 27.245 MHz

Receiver

- Interface: USB
- Power: 5V DC, 100mA MAX connected to host computer

ELECTRIC SPECIFICATIONS

- Operating Voltage: Transmitter: 3V DC (powered by batteries)
Receiver: 5V DC (powered by USB port)
- Operating Current: Transmitter: 15~45 mA, depends on the condition of the working surface.
Receiver: 16mA typical
- Standby Current: 6 mA
- Sleep Current: 240uA

TROUBLESHOOTING

1. Mouse does not have function

- If mouse is not functional; please turn off the computer first.
- ☞ Check the receiver and make sure it is firmly attached to the USB port of the computer.
- Check the placement of batteries and see if they are properly connecting.
- The "+" and "-" on the batteries must match the "+" and "-" on the slots. If the batteries aren't inserted correctly, the device won't work.
- Restart the computer again. If the LED inside the receiver does not light

- up when moving the mouse, please re-connect the mouse to the receiver.
- **Q:** The mouse cursor can only move left & right during operation (it could be caused by low battery or the optical sensor's data error).
 - **A:** Please take out one of batteries and put it back for a power reset and then redo the connect procedure.
 - **Q:** The mouse does not work after waking up from power off mode by pressing the connect button once.
 - **A:** This might be caused by imprecisely depressing the connect button to wake up the mouse. Users can gain back normal operation by pressing connect button on the mouse first, and then pressing the one on the receiver. As soon as the LED inside the receiver starts flashing, the mouse is ready to operate.

Optical Sensor Mouse functions best on surfaces with details for tracking. It may not function on reflective, reflective pattern or non-visible detail surfaces!

2. Reducing Interference with Other Wireless Devices

- Reducing Interference with Other Wireless Devices: All 27MHz radio-based devices are subject to interference from other 27MHz radio-based devices, such as cordless telephones, cordless baby monitors, and cordless toys. It may help to move the receiver unit and the base unit of other wireless devices (such as cordless telephone cradle) as far apart as possible. You may need to try several times for a location that is best in your operating environment.
- Move the receiver and the mouse closer to each other so that the receiver is relatively shorter in distance to the mouse than to other 27MHz transmitters. You may need to re-establish the "connection".

Note: Avoid using this device on a metal surface because a large surface of iron, aluminum, copper, or other metal may act like a shielding to the RF antenna of the mouse and the receiver.

3. Interference with other RF wireless mouse

If the interference comes from other same model of RF wireless mice, please "Setting up connection between mouse and receiver" of the installation guide to switch to a new RF channel. A new identification code is also generated upon the completion of channel switching.

Normally, the effective transmission distance is about 3 feet, depending on the environment. If the effective distance between the mouse and the receiver is bad, try to change the location of the receiver.

4. If you have difficulty connecting the wireless mouse:

Increase the distance between the set of wireless mouse and other radio device units.

Turn off the other wireless devices, or their base units that are in close proximity to the receiver of this wireless mouse.

Try connecting the wireless mouse and its receiver again.

To verify that your device is connected and working properly, open a document and try the device.

5. My keyboard or mouse does not work or does not work properly after installation

Make sure you have connected the receiver correctly. For optimal performance, place the receiver at least 8 inches or 20 centimeters away from other electrical devices, such as the computer, the computer monitor, or external storages devices.

Make sure you have installed the batteries correctly.

Make sure you have set the same ID on both transmitter (mouse and keyboard) and the receiver (see Setting the ID under Hardware Installation).

If the problem persists, try an alternative ID selection to avoid possible interference. Remember to set the same ID on both transmitter and receiver.

6. My keyboard or mouse is not detected

Make sure you have connected the receiver correctly. Do not plug or unplug the receiver cables while the computer is running.

You may have other system devices that conflict with the mouse and keyboard. Check the IRQ / address settings of these devices for conflicts and change the settings as required.

Electromagnetic Characteristics (EMC)



**Tested to comply with FCC standards
For home or office use**

This device complies with Part 15 of the FCC Rules. Operation is subject to the following two conditions: (1) This device may not cause harmful interference, and (2) this device must accept any interference received, including interference that may cause undesired operation.

CE - Type acceptance: EN300 220 Short Range Device

Federal Communication Commission Interference Statement

This equipment has been tested and found to comply with the limits for a Class B digital device, pursuant to Part 15 of the FCC Rules. These limits are designed to provide reasonable protection against harmful interference in a residential installation. This equipment generates, uses and can radiate radio frequency energy and, if not installed and used in accordance with the instructions, may cause harmful interference to radio communications. However, there is no guarantee that interference will not occur in a particular installation. If this equipment does cause harmful interference to radio or television reception, which can be determined by turning the equipment off and on, the user is encouraged to try to correct the interference by one of the following measures:

- Reorient or relocate the receiving antenna.
- Increase the separation between the equipment and receiver.
- Connect the equipment into an outlet on a circuit different from that to which the receiver is connected.
- Consult the dealer or an experienced radio/TV technician for help.

FCC Caution: Any changes or modifications not expressly approved by the party responsible for compliance could void the user's authority to operate this equipment.

This device complies with Part 15 of the FCC Rules. Operation is subject to the following two conditions: (1) This device may not cause harmful interference, and (2) this device must accept any interference received, including interference that may cause undesired operation.

IMPORTANT NOTE:

FCC Radiation Exposure Statement:

This equipment complies with FCC RF radiation exposure limits set forth for an uncontrolled environment. To maintain compliance with FCC RF exposure compliance requirements, please avoid direct contact to the transmitting antenna during transmitting.

This transmitter must not be co-located or operating in conjunction with any other antenna or transmitter.