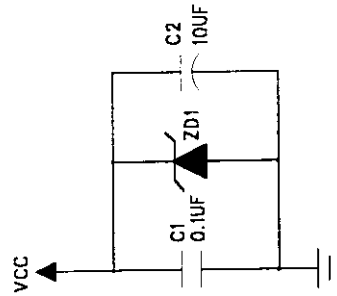


- MT1 ○
- MT2 ○
- MT3 ○
- MT4 ○



Note:
 For backward compatibility to the prior FCC and CE passed PCB,
 R2 is retained but will not be installed.
 ZD1 is retained for the same reason as R2 is.
 R1 has been replaced by D2.
 ***The previous controller for serial mouse was HT6515,
 but is switched to HM8375, or HM8370 (next alternative).

DEXIN Corporation, Ltd

Model: G2R 600dpi

CODE:	SIZE:	DRAWING NO:	REV:

SCALE:

SHEET: 1 OF 1