



## Internal Pictures

**Model: Teletrac PRISM TM2**

**FCC ID: NIUBTLTRC**



Accredited according to **ISO/IEC 17025**



FCC listed # 101450

IC recognized # 3925

### **CETECOM Inc.**

411 Dixon Landing Road • Milpitas, CA 95035 • U.S.A.

Phone: + 1 (408) 586 6200 • Fax: + 1 (408) 586 6299 • E-mail: [info@cetecomusa.com](mailto:info@cetecomusa.com) • <http://www.cetecom.com>

CETECOM Inc. is a Delaware Corporation with Corporation number: 2113686

Board of Directors: Dr. Harald Ansorge, Dr. Klaus Matkey, Hans Peter May

**CETECOM™**

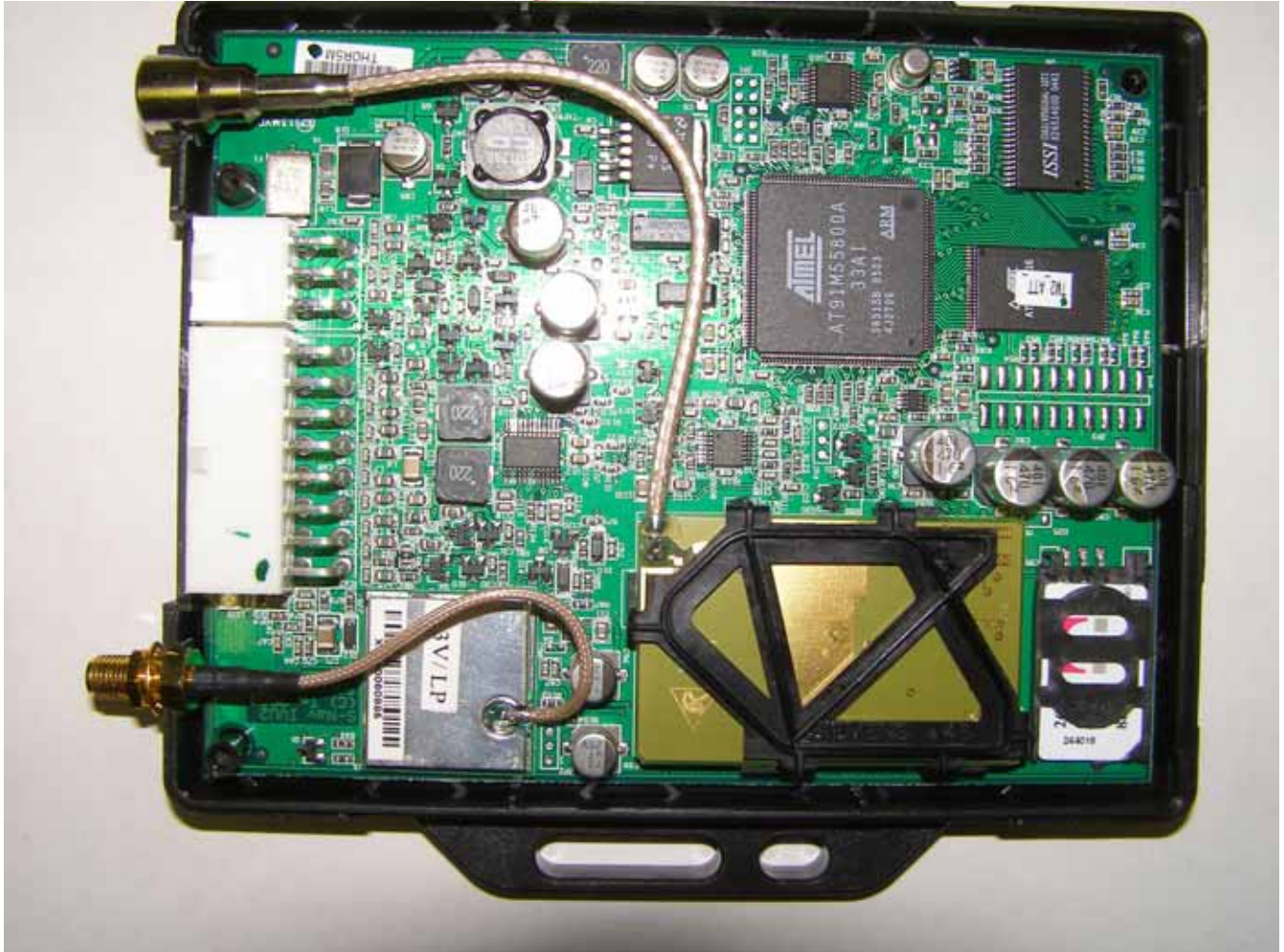


Photo 1. Board in chassis

**CETECOM™**



Photo 2. Board Top



**CETECOM™**

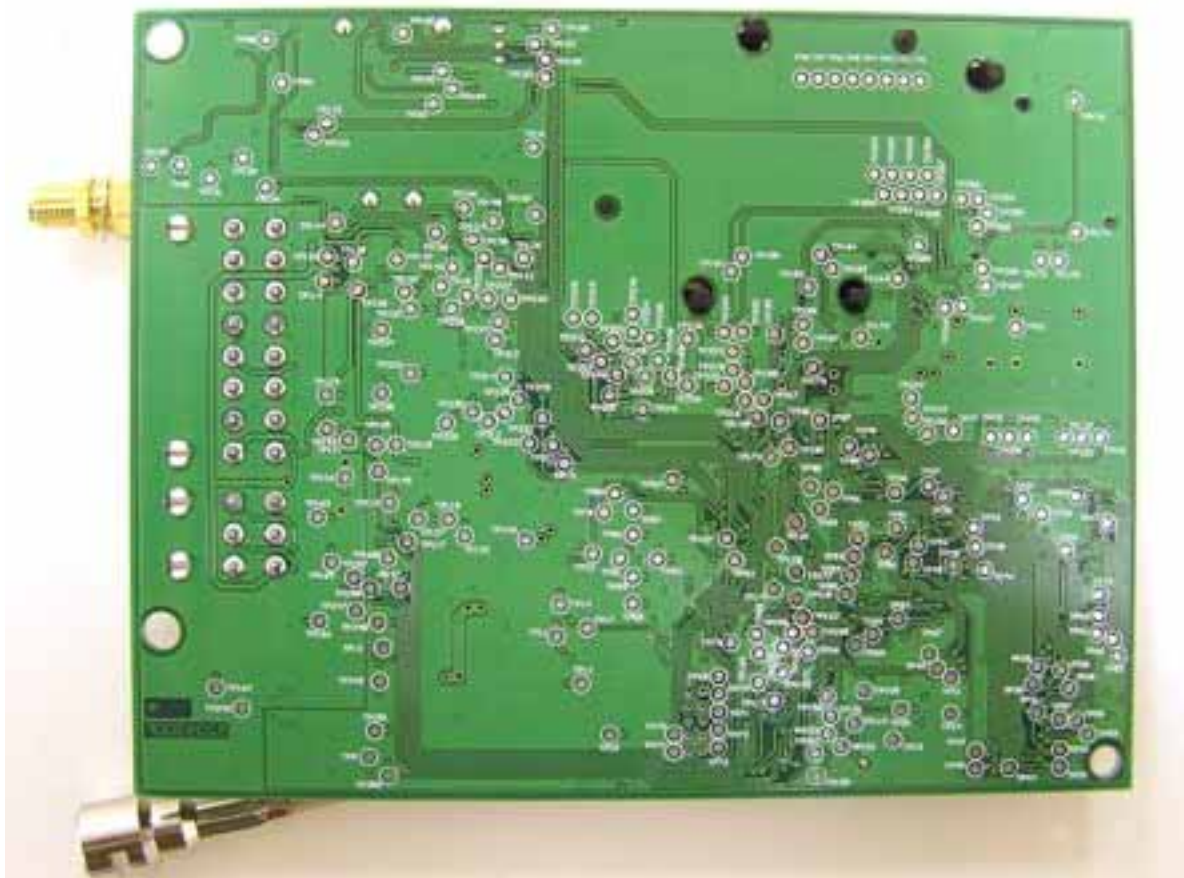


Photo 3. Board Back

**CETECOM™**

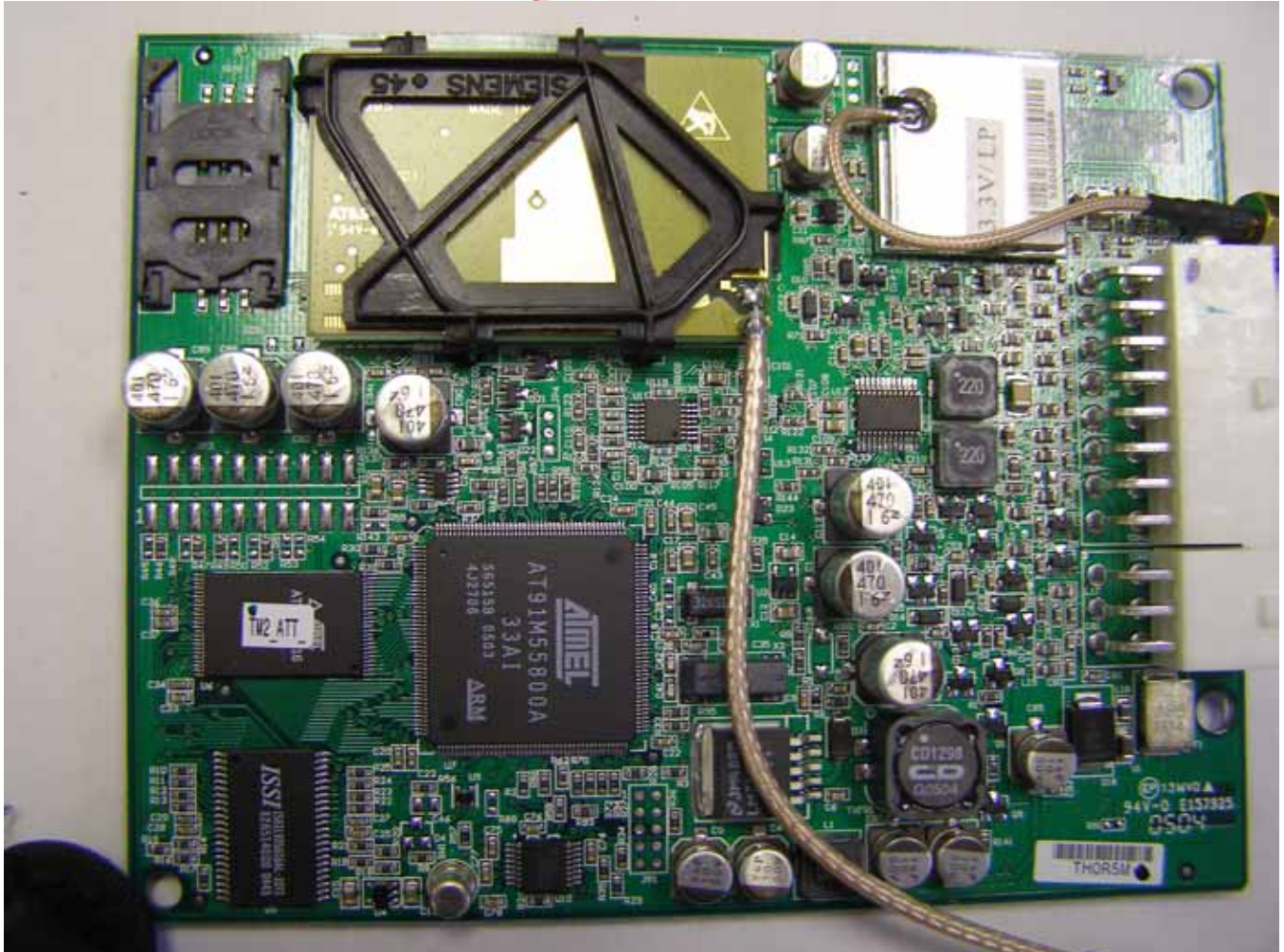


Photo 4. Board Top Close-up





**Photo 5. Board Top Module Removed**  
(Note: the shielded component at the bottom of the board is the GPS module. No components are under the GPS module.)